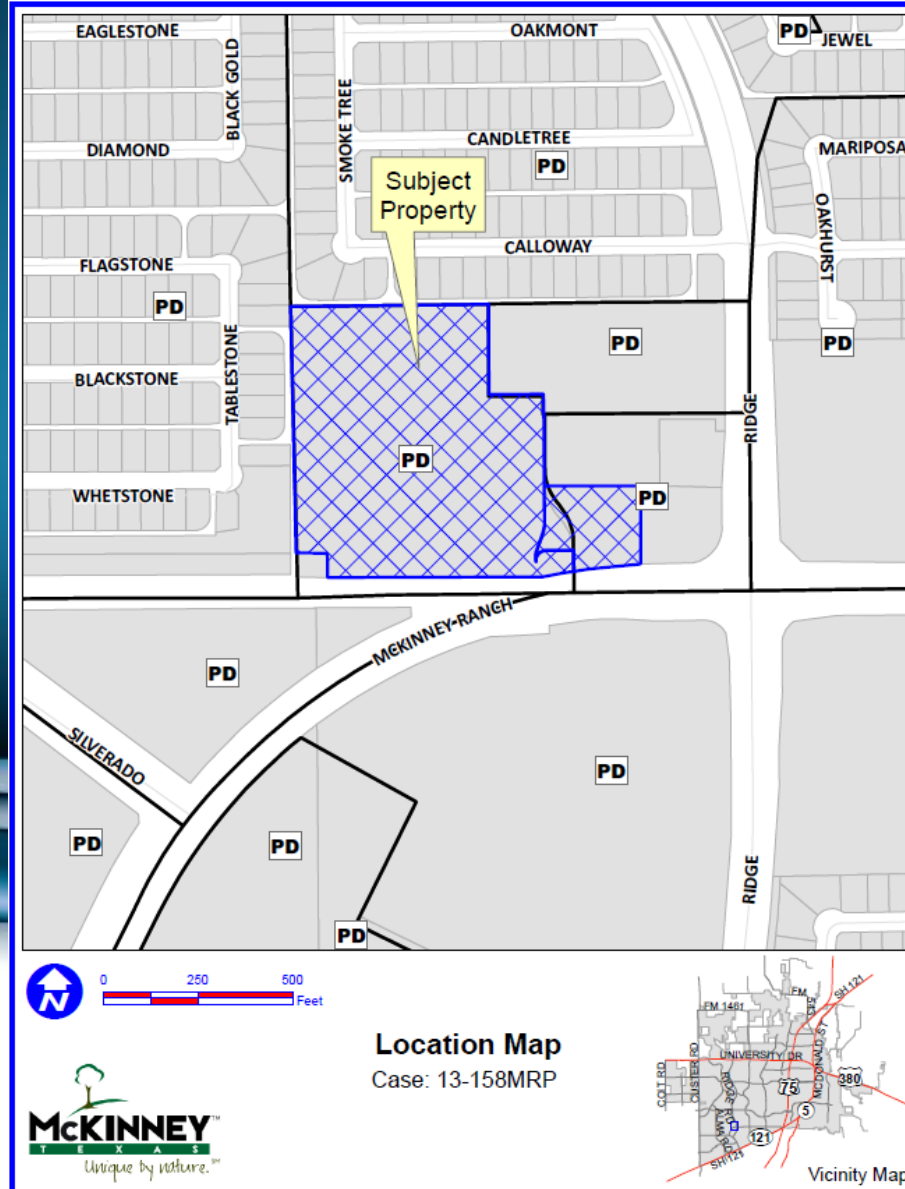


Case No. 13-158MRP

Episcopal Diocese of Dallas



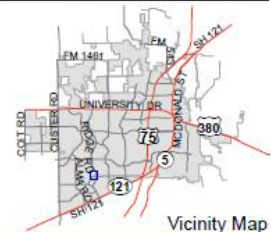
Location Map



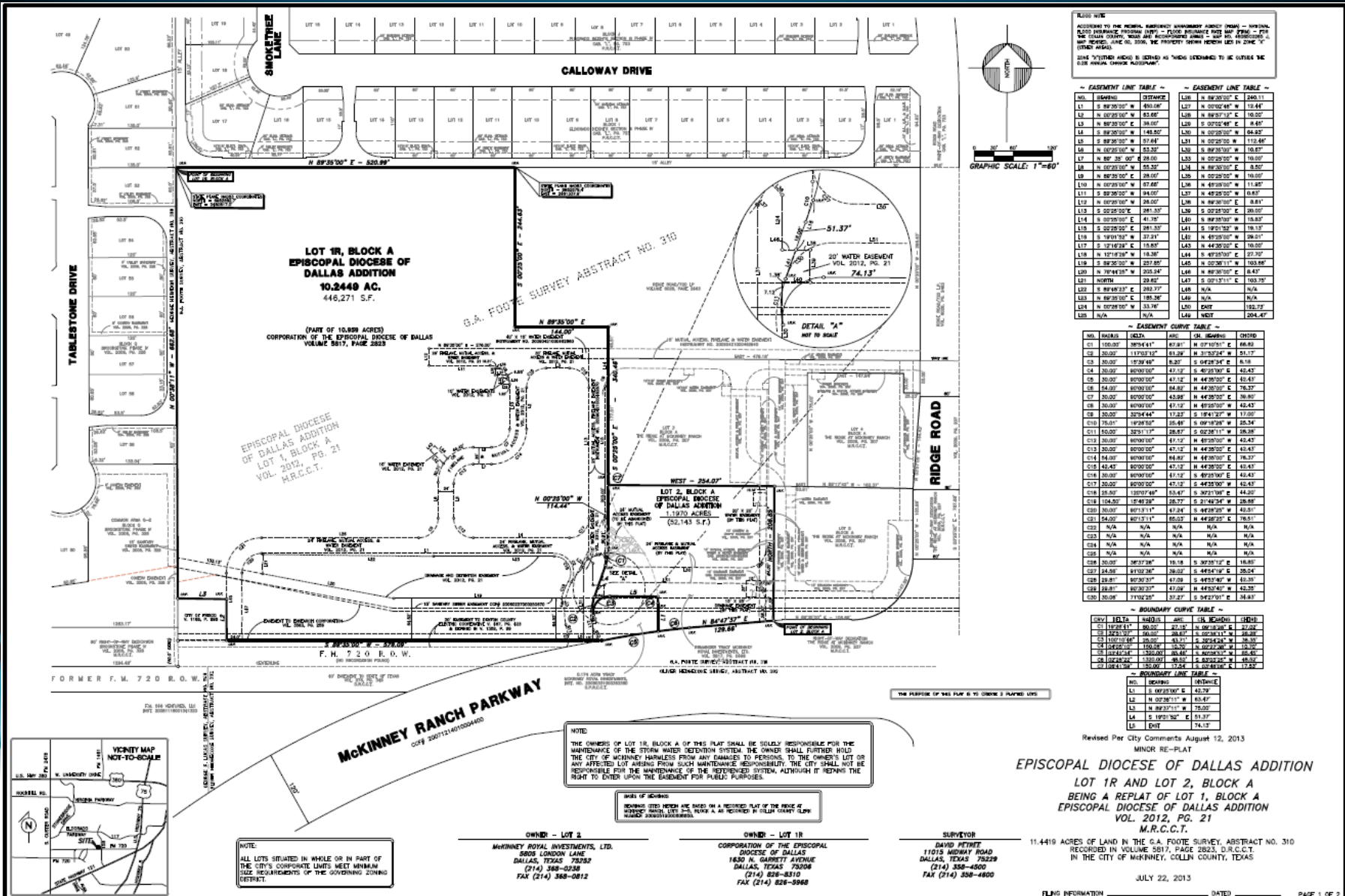
Aerial Exhibit



Location Map
Case: 13-158MRP



Proposed Minor Replat



RECORD WITH
ACCESS TO THE PUBLIC RECORDS MANAGEMENT AGENCY FROM - METROPLIS
COUNTY RECORDS DIVISION LOT 1R - FLOOD EASEMENT NOTE MAP FILE # 179
WAS RECORDED, JAN. 10, 2008. THE PROPERTY BOUNDARIES HEREIN ARE ZONE "1"
(TOWN MAPS).
THIS "LIMITED EASEMENT" IS INTENDED AS "TODAY'S EASEMENT" TO BE UTILIZED BY
OUR ANNUAL CHURCH ASSOCIATION."

EASEMENT LINE TABLE

NO.	BEARING	DISTANCE	NO.	BEARING	DISTANCE
L1	N 89°25'00" W	484.99'	L36	S 89°20'00" E	240.11'
L2	N 00°25'00" W	63.66'	L37	N 02°20'00" E	15.84'
L3	N 89°20'00" E	38.60'	L38	S 02°02'45" E	8.46'
L4	S 89°20'00" W	148.90'	L39	N 02°20'00" E	84.89'
L5	N 89°20'00" W	67.64'	L40	N 02°20'00" E	118.48'
L6	N 02°20'00" W	53.20'	L41	S 89°20'00" E	10.87'
L7	N 89°20'00" E	28.60'	L42	N 02°20'00" W	10.00'
L8	N 02°20'00" W	85.20'	L43	N 89°20'00" E	8.92'
L9	N 89°20'00" E	28.60'	L44	N 02°20'00" W	10.00'
L10	N 02°20'00" W	87.68'	L45	N 89°20'00" E	11.85'
L11	S 89°20'00" E	34.00'	L46	N 49°25'00" E	6.83'
L12	N 02°20'00" W	38.60'	L47	N 89°20'00" E	8.81'
L13	S 02°25'00" E	381.50'	L48	S 02°20'00" E	20.00'
L14	N 02°20'00" E	41.20'	L49	N 89°20'00" W	16.83'
L15	S 02°20'00" E	28.60'	L50	S 19°15'00" E	18.19'
L16	N 79°10'00" E	37.31'	L51	N 49°25'00" E	26.31'
L17	S 10°18'28" E	15.83'	L52	N 44°20'00" E	10.00'
L18	N 17°18'38" E	19.28'	L53	S 49°25'00" E	27.20'
L19	S 02°20'00" W	237.88'	L54	N 02°20'00" E	133.89'
L20	N 79°44'54" E	205.34'	L55	N 89°20'00" E	8.47'
L21	NORTH	28.82'	L56	S 02°18'10" E	103.20'
L22	S 89°20'00" E	282.27'	L57	N/A	N/A
L23	N 89°20'00" E	186.24'	L58	N 89°20'00" E	186.24'
L24	N 02°20'00" W	33.28'	L59	EAST	152.23'
L25	N/A	N/A	L60	WEST	204.47'

EASEMENT CURVE TABLE

NO.	ARC LENGTH	CHORD	CHORD BEARING	CHORD DISTANCE	CHORD BEARING	CHORD DISTANCE
C1	150.00'	3854.41'	87.81'	N 02°18'10" E	66.82'	66.82'
C2	30.00'	1173.13'	61.28'	S 31°52'24" E	51.17'	51.17'
C3	30.00'	1929.49'	8.22'	S 02°28'34" E	61.91'	61.91'
C4	20.00'	8000.00'	N/A	S 02°20'00" E	42.43'	42.43'
C5	30.00'	9020.00'	47.12'	N 44°20'00" E	42.43'	42.43'
C6	44.00'	10200.00'	84.82'	N 44°20'00" E	76.27'	76.27'
C7	30.00'	8020.00'	43.98'	N 44°20'00" E	36.80'	36.80'
C8	20.00'	8020.00'	47.12'	N 44°20'00" E	42.43'	42.43'
C9	30.00'	3254.44'	17.23'	S 19°41'20" W	17.00'	17.00'
C10	75.00'	1929.49'	25.48'	S 09°19'28" W	25.24'	25.24'
C11	84.00'	3254.44'	17.23'	S 02°28'34" E	26.28'	26.28'
C12	20.00'	8020.00'	47.12'	N 44°20'00" E	42.43'	42.43'
C13	20.00'	8020.00'	47.12'	N 44°20'00" E	42.43'	42.43'
C14	44.00'	8020.00'	84.82'	N 44°20'00" E	76.27'	76.27'
C15	44.42'	8020.00'	47.12'	N 44°20'00" E	42.43'	42.43'
C16	30.00'	9020.00'	47.12'	S 49°25'00" E	42.43'	42.43'
C17	30.00'	8020.00'	47.12'	S 44°20'00" E	42.43'	42.43'
C18	20.00'	1000.00'	49.47'	S 32°15'00" E	44.20'	44.20'
C19	104.20'	1748.25'	28.72'	S 21°46'24" E	28.99'	28.99'
C20	30.00'	8013.11'	47.24'	S 49°25'00" E	42.43'	42.43'
C21	54.00'	8013.11'	85.03'	N 44°28'25" E	76.51'	76.51'
C22	N/A	N/A	N/A	N/A	N/A	N/A
C23	N/A	N/A	N/A	N/A	N/A	N/A
C24	N/A	N/A	N/A	N/A	N/A	N/A
C25	N/A	N/A	N/A	N/A	N/A	N/A
C26	24.00'	3872.26'	19.18'	S 37°28'00" E	16.80'	16.80'
C27	24.00'	8122.26'	39.02'	S 48°44'00" E	28.04'	28.04'
C28	28.81'	10200.00'	47.29'	S 44°20'00" E	42.43'	42.43'
C29	28.81'	8020.00'	47.29'	N 44°20'00" E	42.43'	42.43'
C30	30.00'	1173.13'	61.28'	S 31°52'24" E	51.17'	51.17'

BOUNDARY CURVE TABLE

NO.	ARC LENGTH	CHORD	CHORD BEARING	CHORD DISTANCE	CHORD BEARING	CHORD DISTANCE
B1	119.2814'	80.00'	27.13'	N 02°20'00" E	27.02'	27.02'
B2	124.0130'	80.00'	41.15'	N 02°20'00" E	41.04'	41.04'
B3	122.0216'	80.00'	43.11'	S 82°24'00" E	78.30'	78.30'
B4	124.0130'	80.00'	41.15'	S 02°20'00" E	41.04'	41.04'
B5	124.0130'	80.00'	41.15'	S 02°20'00" E	41.04'	41.04'
B6	124.0130'	80.00'	41.15'	S 02°20'00" E	41.04'	41.04'
B7	124.0130'	80.00'	41.15'	S 02°20'00" E	41.04'	41.04'
B8	124.0130'	80.00'	41.15'	S 02°20'00" E	41.04'	41.04'
B9	124.0130'	80.00'	41.15'	S 02°20'00" E	41.04'	41.04'
B10	124.0130'	80.00'	41.15'	S 02°20'00" E	41.04'	41.04'
B11	124.0130'	80.00'	41.15'	S 02°20'00" E	41.04'	41.04'
B12	124.0130'	80.00'	41.15'	S 02°20'00" E	41.04'	41.04'
B13	124.0130'	80.00'	41.15'	S 02°20'00" E	41.04'	41.04'
B14	124.0130'	80.00'	41.15'	S 02°20'00" E	41.04'	41.04'
B15	124.0130'	80.00'	41.15'	S 02°20'00" E	41.04'	41.04'
B16	124.0130'	80.00'	41.15'	S 02°20'00" E	41.04'	41.04'
B17	124.0130'	80.00'	41.15'	S 02°20'00" E	41.04'	41.04'
B18	124.0130'	80.00'	41.15'	S 02°20'00" E	41.04'	41.04'
B19	124.0130'	80.00'	41.15'	S 02°20'00" E	41.04'	41.04'
B20	124.0130'	80.00'	41.15'	S 02°20'00" E	41.04'	41.04'

EASEMENT TABLE

NO.	BEARING	DISTANCE	NO.	BEARING	DISTANCE
E1	S 02°20'00" E	42.29'			
E2	N 02°20'11" W	63.47'			
E3	N 89°20'11" W	75.00'			
E4	S 10°02'00" E	61.33'			
E5	EAST	74.13'			