





TREE TABLE				
NO.	SIZE/TYPE	CLASSIFICATION	COMMENT	FLOOD PLAIN
5000	5" HAK	UNPROTECTED	REMOVE EXEMPT	NO
5001	6" HAK	UNPROTECTED	REMOVE EXEMPT	NO
5002	10" BOD	UNPROTECTED	REMOVE EXEMPT	NO
5003	6" HAK	UNPROTECTED	REMOVE EXEMPT	NO
5004	8" HAK	UNPROTECTED	REMOVE EXEMPT	NO
5005	8" BOD	UNPROTECTED	REMOVE EXEMPT	NO
5006	6" LOC	UNPROTECTED	REMOVE EXEMPT	NO
5007	5" HAK	UNPROTECTED	REMOVE EXEMPT	NO
5008	5" ELM	QUALITY	REMOVE DRIVE	NO
5009	8" HAK	UNPROTECTED	REMOVE EXEMPT	NO
5010	8" ELM	PROTECTED	REMOVE DRIVE	NO
5011	4" ELM	QUALITY	REMOVE DRIVE	NO
5012	4" HAK	UNPROTECTED	REMOVE EXEMPT	NO
5013	5" ELM	UNPROTECTED	REMOVE EXEMPT	NO
5014	6" HAK	UNPROTECTED	REMOVE EXEMPT	NO
5015	7" ELM	PROTECTED	REMOVE DRIVE	NO
5016	5" HAK	UNPROTECTED	REMOVE EXEMPT	NO
5017	6" HAK	UNPROTECTED	REMOVE EXEMPT	NO
5018	14" WIL	UNPROTECTED	REMOVE EXEMPT	NO
5019	7" HAK	UNPROTECTED	REMOVE EXEMPT	NO
5020	4" HAK	UNPROTECTED	REMOVE EXEMPT	NO
5021	4" HAK	UNPROTECTED	REMOVE EXEMPT	NO
5022	5" HAK	UNPROTECTED	REMOVE EXEMPT	NO
5023	4" HAK	UNPROTECTED	REMOVE EXEMPT	NO
5024	5" HAK	UNPROTECTED	REMOVE EXEMPT	NO
5025	9" HAK	UNPROTECTED	REMOVE EXEMPT	NO
5026	12" WIL	UNPROTECTED	REMOVE EXEMPT	NO
5027	7" ELM	PROTECTED	REMOVE DRIVE	NO
5028	7" ELM	PROTECTED	REMOVE DRIVE	NO
5029	6" HAK	UNPROTECTED	REMOVE EXEMPT	NO
5030	5" HAK	UNPROTECTED	REMOVE EXEMPT	NO
5031	8" BOD	UNPROTECTED	REMOVE EXEMPT	NO
5032	4" HAK	UNPROTECTED	REMOVE EXEMPT	NO
5033	8" ELM	PROTECTED	REMOVE DRIVE	NO
5034	8" HAK	UNPROTECTED	REMOVE EXEMPT	NO
5035	6" HAK	UNPROTECTED	REMOVE EXEMPT	NO
5036	5" HAK	UNPROTECTED	REMOVE EXEMPT	NO
5037	5" HAK	UNPROTECTED	REMOVE EXEMPT	NO
5038	4" HAK	UNPROTECTED	REMOVE EXEMPT	NO
5039	5" HAK	UNPROTECTED	REMOVE EXEMPT	NO

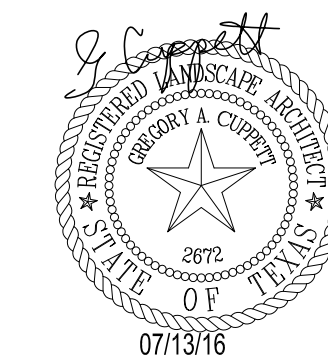
TREE TABLE				
NO.	SIZE/TYPE	CLASSIFICATION	COMMENT	FLOOD PLAIN
5040	6" HAK	UNPROTECTED	REMOVE EXEMPT	NO
5041	10" HAK	UNPROTECTED	REMOVE EXEMPT	NO
5042	4" HAK	UNPROTECTED	REMOVE EXEMPT	NO
5043	7" HAK	UNPROTECTED	REMOVE EXEMPT	NO
5044	5" HAK	UNPROTECTED	REMOVE EXEMPT	NO
5045	5" HAK	UNPROTECTED	REMOVE EXEMPT	NO
5046	5" ELM	QUALITY	REMOVE DRIVE	NO
5047	4" ELM	QUALITY	REMOVE DRIVE	NO
5048	4" ELM	QUALITY	REMOVE DRIVE	NO
5049	8" HAK	UNPROTECTED	REMOVE EXEMPT	NO
5050	6" HAK	UNPROTECTED	REMOVE EXEMPT	NO
5051	5" ELM	QUALITY	REMOVE DRIVE	NO
5052	10" ELM	PROTECTED	REMOVE DRIVE	NO
5053	5" HAK	UNPROTECTED	REMOVE EXEMPT	NO
5054	8" HAK	UNPROTECTED	REMOVE EXEMPT	NO
5055	6" HAK	UNPROTECTED	REMOVE EXEMPT	NO
5056	4" HAK	UNPROTECTED	REMOVE EXEMPT	NO
5057	5" HAK	UNPROTECTED	REMOVE EXEMPT	NO
5058	4" HAK	UNPROTECTED	REMOVE EXEMPT	NO
5059	4" HAK	UNPROTECTED	REMOVE EXEMPT	NO
5060	4" ELM	QUALITY	REMOVE BLDG PAD	NO
5061	5" HAK	UNPROTECTED	REMOVE EXEMPT	NO
5062	5" HAK	UNPROTECTED	REMOVE EXEMPT	NO
5063	5" HAK	UNPROTECTED	REMOVE EXEMPT	NO
5064	6" HAK	UNPROTECTED	REMOVE EXEMPT	NO
5065	5" HAK	UNPROTECTED	REMOVE EXEMPT	NO
5066	4" ELM	QUALITY	REMOVE BLDG PAD	NO
5067	9" ELM	PROTECTED	REMOVE BLDG PAD	NO
5068	4" LOC	UNPROTECTED	REMOVE EXEMPT	NO
5069	5" LOC	UNPROTECTED	REMOVE EXEMPT	NO
5070	7" ELM	PROTECTED	REMOVE BLDG PAD	NO
5071	4" ELM	QUALITY	REMOVE DRIVE	NO
5072	7" HAK	UNPROTECTED	REMOVE EXEMPT	NO
5073	4" HAK	UNPROTECTED	REMOVE EXEMPT	NO
5074	4" HAK	UNPROTECTED	REMOVE EXEMPT	NO
5075	5" ELM	QUALITY	REMOVE DRIVE	NO
5076	5" HAK	UNPROTECTED	REMOVE EXEMPT	NO
5077	5" HAK	UNPROTECTED	REMOVE EXEMPT	NO
5078	4" LOC	UNPROTECTED	REMOVE EXEMPT	NO
5079	8" HAK	UNPROTECTED	REMOVE EXEMPT	NO

TREE TABLE				
NO.	SIZE/TYPE	CLASSIFICATION	COMMENT	FLOOD PLAIN
5080	9" WIL	UNPROTECTED	REMOVE EXEMPT	NO
5081	5" WIL	UNPROTECTED	REMOVE EXEMPT	NO
5082	10" WIL	UNPROTECTED	REMOVE EXEMPT	NO
5083	11" WIL	UNPROTECTED	REMOVE EXEMPT	NO
5084	6" HAK	UNPROTECTED	REMOVE EXEMPT	NO
5085	10" WIL	UNPROTECTED	REMOVE EXEMPT	NO
5086	12" WIL	UNPROTECTED	REMOVE EXEMPT	NO
5087	4" HAK	UNPROTECTED	REMOVE EXEMPT	NO
5088	5" ELM	QUALITY	REMOVE DRIVE	NO
5089	4" HAK	UNPROTECTED	REMOVE EXEMPT	NO
5092	8" ELM	PROTECTED	REMOVE FIRE LANE	NO
5094	4" ELM	QUALITY	REMOVE FIRE LANE	NO
5095	6" ELM	PROTECTED	REMOVE FIRE LANE	NO
5096	7" ASH	PROTECTED	REMOVE FIRE LANE	NO
5100	12" ELM	PROTECTED	REMOVE FIRE LANE	NO
9112	22" WIL	UNPROTECTED	REMOVE EXEMPT	NO
9113	8" WIL	UNPROTECTED	REMOVE EXEMPT	NO
9114	4" WIL	UNPROTECTED	REMOVE EXEMPT	NO
9115	36" PEC	PROTECTED	REMOVE PARKING	NO
9116	33" PEC	PROTECTED	REMOVE PARKING	NO
9117	4" ELM	QUALITY	REMOVE PARKING	NO
9118	4" LOC	UNPROTECTED	REMOVE EXEMPT	NO
9119	8" ELM	PROTECTED	REMOVE PARKING	NO
9122	4" HAK	UNPROTECTED	REMOVE EXEMPT	NO
9123	5" PEC	QUALITY	REMOVE PARKING	NO
9125	5" HAK	UNPROTECTED	REMOVE EXEMPT	NO
9128	25" PEC	PROTECTED	REMOVE PARKING	NO
9129	4" CED	UNPROTECTED	REMOVE EXEMPT	NO
9130	34" HAK	UNPROTECTED	REMOVE EXEMPT	NO
9131	7" ELM	PROTECTED	REMOVE PARKING	NO
9132	32" ELM	PROTECTED	REMOVE PARKING	NO
9133	9" ELM	PROTECTED	REMOVE PARKING	NO
9134	26" PEC	PROTECTED	REMOVE PARKING	NO
9139	26" WIL	UNPROTECTED	REMOVE EXEMPT	NO
9140	9" ELM	PROTECTED	REMOVE PARKING	NO
9141	6" ELM	PROTECTED	REMOVE PARKING	NO
9142	6" ELM	PROTECTED	REMOVE PARKING	NO
9143	23" ELM	PROTECTED	REMOVE PARKING	NO
9144	9" HAK	UNPROTECTED	REMOVE EXEMPT	NO
9145	8" ELM	PROTECTED	REMOVE PARKING	NO

TREE TABLE				
NO.	SIZE/TYPE	CLASSIFICATION	COMMENT	FLOOD PLAIN
9146	8" HAK	UNPROTECTED	REMOVE EXEMPT	NO
9147	25" PEC	PROTECTED	REMOVE PARKING	NO
9148	26" PEC	PROTECTED	REMOVE FIRE LANE	NO
9149	8" ASH	PROTECTED	REMOVE PARKING	NO
9150	4" HAK	UNPROTECTED	REMOVE EXEMPT	NO
9151	13" ELM	PROTECTED	REMOVE FIRE LANE	NO
9152	4" HAK	UNPROTECTED	REMOVE EXEMPT	NO
9153	9" BOD	UNPROTECTED	REMOVE EXEMPT	NO
9154	4" HAK	UNPROTECTED	REMOVE EXEMPT	NO
9159	24" HAK	UNPROTECTED	REMOVE EXEMPT	NO
9160	11" BOD	UNPROTECTED	REMOVE EXEMPT	NO
9161	7" BOD	UNPROTECTED	REMOVE EXEMPT	NO
9162	9" BOD	UNPROTECTED	REMOVE EXEMPT	NO
9163	54" ASH	SPECIMEN	REMOVE FIRE LANE	NO
9164	14" HAK	UNPROTECTED	REMOVE EXEMPT	NO
9165	9" HAK	UNPROTECTED	REMOVE EXEMPT	NO

**FLOOD PLAIN TREES**  
 0 QUALITY TREES 6" OR GREATER WITHIN FLOOD PLAIN  
 0 QUALITY TREES 6" OR GREATER BEING REMOVED  
 0 % OF QUALITY TREES 6" OR GREATER WITHIN FLOOD PLAIN BEING REMOVED

**MITIGATION**  
 54" SPECIMEN ASH (#9163) TO BE REMOVED AND MITIGATED BY PAYMENT  
 OF \$21,600 TO BE PAID INTO REFORESTATION FUND



THIS ELECTRONIC DRAWING FILE IS RELEASED UNDER THE AUTHORITY OF GREGORY A. CUPPETT, LANDSCAPE ARCHITECT REGISTRATION NUMBER 2872 ON 07/01/16, WHO MAINTAINS THE ORIGINAL FILE. THIS ELECTRONIC DRAWING FILE MAY BE USED AS A BACKGROUND DRAWING. PURSUANT TO RULE 3.103(F) OF THE RULES AND REGULATIONS OF THE TEXAS BOARD OF ARCHITECTURAL EXAMINERS, THE USER OF THIS ELECTRONIC DRAWING FILE AGREES TO ASSUME ALL RESPONSIBILITY FOR ANY MODIFICATION TO OR USE OF THIS DRAWING FILE THAT IS INCONSISTENT WITH THE REQUIREMENTS OF THE RULES AND REGULATIONS OF THE TEXAS BOARD OF ARCHITECTURAL EXAMINERS. NO PERSON MAY MAKE MODIFICATIONS TO THIS ELECTRONIC DRAWING FILE WITHOUT THE LANDSCAPE ARCHITECT'S EXPRESS WRITTEN PERMISSION.

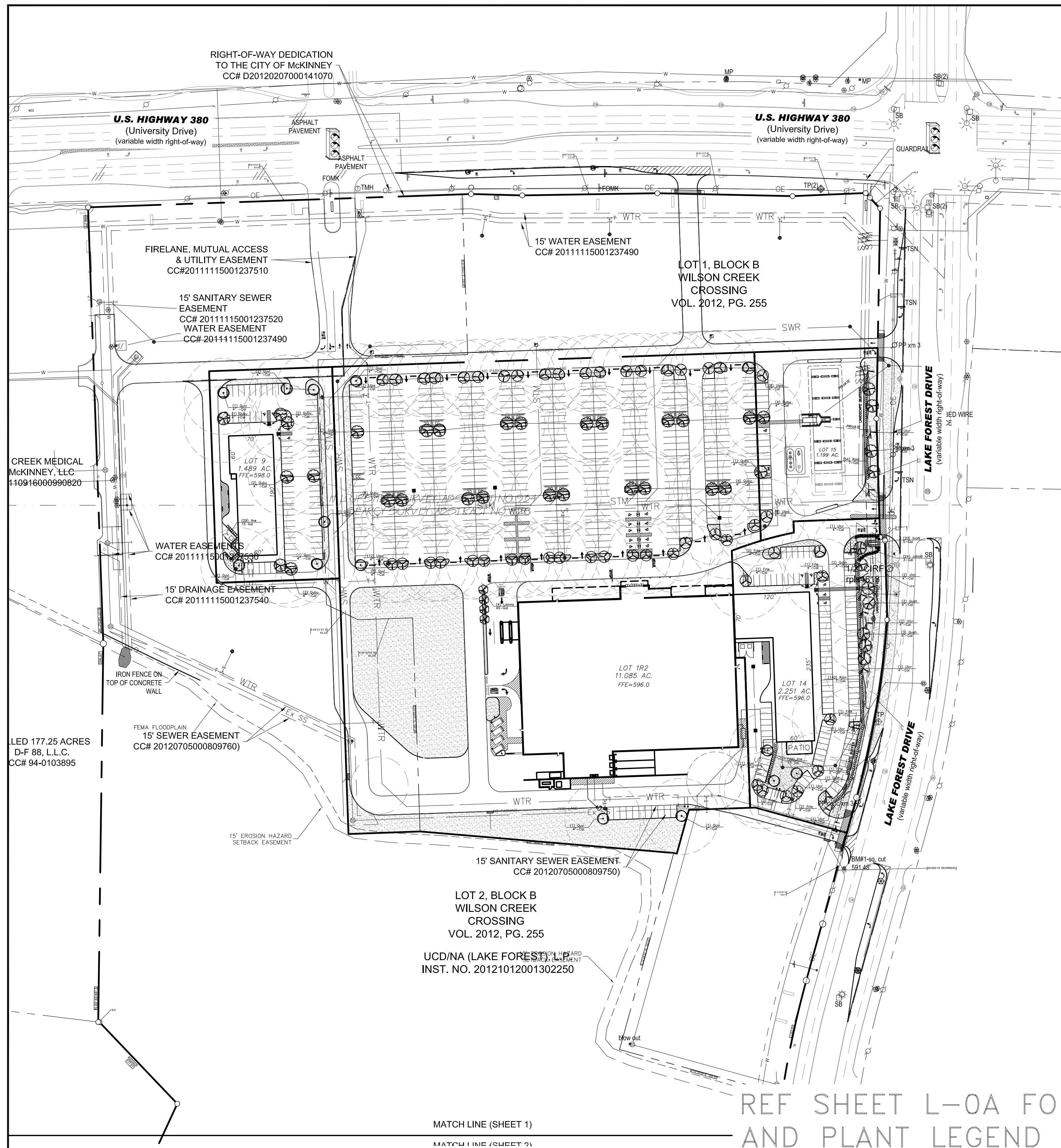
PRELIMINARY - NOT FOR CONSTRUCTION

**TREE SURVEY**  
 KROGER DAL565  
 380 & LAKE FOREST DR.  
 MCKINNEY, TEXAS

**T-2**  
 DAL565

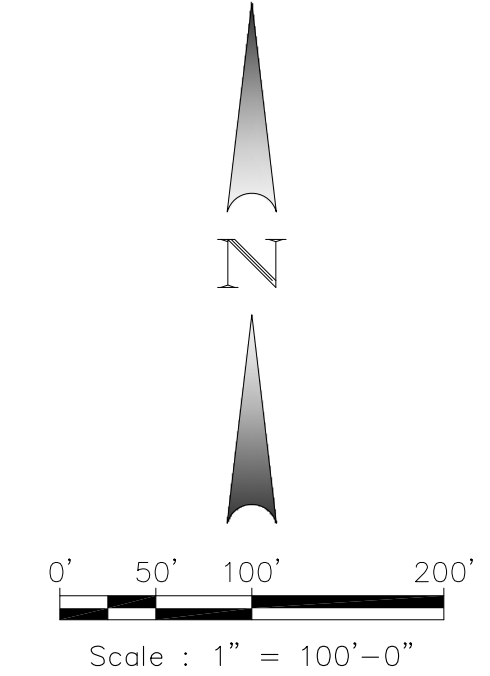
**Winkelmann & Associates, Inc.**  
 CONSULTING CIVIL ENGINEERS ■ SURVEYORS  
 6720 HILDBEST PLAZA, SUITE 325, DALLAS, TX 75231  
 (972) 492-7098  
 Texas Engineers Registration No. 8912  
 Texas Surveyors Registration No. 20866-01  
 Copyright © 2016, Winkelmann & Associates, Inc.

NO.	DATE	REVISION
6.		
5.		
4.		
3.		
2.		
1.	07/01/2016	CITY SITE PLAN COMMENTS



**NOTE:**

- ALL CALIPER SIZES ARE BEING MEASURED AS NURSERY STANDARD 12" ABOVE GROUND.
- ALL CANOPY TREES ARE REQUIRED TO BE 4" CALIPER, 12' HEIGHT; ORNAMENTAL TREES ARE 2" CALIPER, 8' HEIGHT.
- SITE WILL INCLUDE AUTOMATIC, UNDERGROUND IRRIGATION SYSTEM. SYSTEM TO BE DESIGNED AND INSTALLED BY LICENSED TEXAS IRRIGATOR.
- THE CONTRACTOR SHALL VERIFY WATER REQUIREMENTS WITHIN THE CITY OF MCKINNEY AT THE TIME OF PLANTING. SHOULD WATER RESTRICTIONS NOT ALLOW HYDROMULCH, HYDROSEEDING, OR SPRIGGING (STAGE 3 AND STAGE 4 WATER RESTRICTIONS), AN APPROPRIATE ALTERNATIVE FOR GRASSING SHALL BE INSTALLED.



IRRIGATION SHALL BE PROVIDED TO ALL PLANTED AREAS. IRRIGATION SHALL HAVE AN ET BASED CONTROLLER. HYDROMULCH BERMUDA IN ALL DISTURBED AREAS AS IDENTIFIED ON GRADING AND EROSION CONTROL PLANS.

THE CONTRACTOR SHALL VERIFY WATER RESTRICTIONS WITHIN THE CITY OF MCKINNEY AT TIME OF PLANTING. SHOULD WATER RESTRICTIONS NOT ALLOW HYDROMULCH, HYDROSEEDING OR SPRIGGING (STAGE 3 AND STAGE 4 WATER RESTRICTIONS), AN APPROVED ALTERNATIVE FOR GRASSING SHALL BE INSTALLED.

**CAUTION!!!**  
UNDERGROUND UTILITIES ARE LOCATED IN THIS AREA. 48 HOURS PRIOR TO ANY CONSTRUCTION ACTIVITIES, CONTACT LINE LOCATES FOR FRANCHISE UTILITY INFO. CALL BEFORE YOU DIG.  
TEXAS EXCAVATION SAFETY SYSTEM (TESS)  
1-800-344-8377  
TEXAS ONE CALL SYSTEMS  
1-800-245-4545  
LONE STAR NOTIFICATION CENTER  
1-800-669-8344 EXT. 5

**BEFORE YOU DIG...**

**PLANTING NOTES:**

1. PRIOR TO PLANTING, CONTRACTOR SHALL CONTACT LANDSCAPE ARCHITECT TO APPROVE NEW TREES ON SITE. LANDSCAPE ARCHITECT SHALL MAKE ONE TRIP TO SITE TO INSPECT TREES. ALL TREES SHALL BE STORED AND HEELED IF REQUIRED PRIOR TO CONTACTING LANDSCAPE ARCHITECT FOR INSPECTION.
2. ALL PLANT MATERIAL TO BE NURSERY GROWN STOCK.
3. CONTRACTOR RESPONSIBLE FOR MAINTENANCE OF ALL PLANT MATERIAL UNTIL PROJECT ACCEPTANCE.
4. ALL CONTAINER GROWN PLANTS TO HAVE FULL, VIGOROUS ROOT SYSTEM, COMPLETELY ENCOMPASSING CONTAINER.
5. ALL PLANTS WELL ROUNDED AND FULLY BRANCHED. ALL TREES WITH SPREAD 2/3 OF HEIGHT.
6. CONTRACTOR TO PROVIDE OWNER WITH PREFERRED MAINTENANCE SCHEDULE OF ALL PLANTS AND LAWNS.
7. MAINTAIN/PROTECT VISIBILITY TRIANGLE WITH PLANT MATERIAL PER CITY STANDARDS AT ALL ENTRANCES TO SITE.
8. PREP ENTIRE WIDTH OF ALL DEFINED PLANTING BEDS WITH MIX AS OUTLINED IN SPECS. WHERE SHRUBS ARE LOCATED ALONG CURB, SET SHRUBS BACK FROM CURB 3 FT.
9. SEE DETAIL SHEET L-6 FOR PLANTING DETAILS.
10. CONTRACTOR RESPONSIBLE FOR LOCATION OF ALL UTILITIES, INCLUDING BUT NOT LIMITED TO TELEPHONE, TELECABLE, ELECTRIC, GAS, WATER AND SEWER. ANY DAMAGE TO UTILITIES TO BE REPAIRED BY CONTRACTOR AT NO COST TO OWNER.
11. EXISTING TREES ARE SHOWN TO REMAIN, CONTRACTOR SHALL PRUNE WITH APPROVAL OF OWNER AND CITY ARBORIST. WORK TO INCLUDE REMOVAL OF ALL SUCKER GROWTH; DEAD AND DISEASED BRANCHES AND LIMBS; VINES, BRIARS AND OTHER INVASIVE GROWTH; AND ALL INTERFERING BRANCHES, AS WELL AS BRANCHES THAT OBSTRUCT SIGN VISIBILITY. MAKE ALL CUTS FLUSH TO REMAINING LIMB. RETAIN NATURAL SHAPE OF PLANT. ALL WORK SUBJECT TO APPROVAL OF OWNER'S REPRESENTATIVE.
12. QUANTITIES ARE PROVIDED AS A COURTESY AND NOT INTENDED FOR BID PURPOSES. CONTRACTOR TO VERIFY PRIOR TO PRICING.
13. INSTALL EDGING BETWEEN LAWN AND PLANTING BEDS. REFER TO SPECIFICATIONS. FILE ALL CORNERS SMOOTH.
14. INSTALL CURLEX BLANKET (OR EQUAL) PER MANUFACTURERS INSTRUCTIONS ON ALL GROUND COVER/SHRUB BEDS WITH A SLOPE OF 4:1 OR GREATER.
15. AT TIME OF PLAN PREPARATION, SEASONAL PLANT AVAILABILITY CANNOT BE DETERMINED. IT IS THE RESPONSIBILITY OF THE CONTRACTOR TO SECURE AND RESERVE ALL B&B PLANTS WHEN AVAILABLE IN CASE ACTUAL INSTALLATION OCCURS DURING THE OFF-SEASON. PURCHASE AND HOLD B&B PLANTS FOR LATE SEASON INSTALLATION.
16. BERM ALL PARKING LOT ISLANDS AS SHOWN ON ENCLOSED DETAIL SHEET. (BERMS MAY NOT BE SHOWN ON GRADING PLAN.)
17. PRIOR TO TREE PLANTING, CONTRACTOR SHALL STAKE TREE LOCATIONS FOR APPROVAL BY OWNER.

REF SHEET L-0A FOR CITY REQUIREMENTS AND PLANT LEGEND

**FAIN • CUPPET**  
**LANDSCAPE ARCHITECTS, LLC**  
8233 Mid Cities Blvd, Suite B  
North Richland Hills, TX 76182-4761 817-479-0730  
PARIS AND OPEN SPACE PLANNING • LANDSCAPE ARCHITECTURE • IRRIGATION DESIGN



THIS ELECTRONIC DRAWING FILE IS RELEASED UNDER THE AUTHORITY OF GREGORY A. CUPPET, LANDSCAPE ARCHITECT REGISTRATION NUMBER 2672 ON 07/01/16, WHO MAINTAINS THE ORIGINAL FILE. THIS ELECTRONIC DRAWING FILE MAY BE USED AS A BACKGROUND DRAWING. PURSUANT TO RULE 3.103(F) OF THE RULES AND REGULATIONS OF THE TEXAS BOARD OF ARCHITECTURAL EXAMINERS, THE USER OF THIS ELECTRONIC DRAWING FILE AGREES TO ASSUME ALL RESPONSIBILITY FOR ANY MODIFICATION TO OR USE OF THIS DRAWING FILE THAT IS INCONSISTENT WITH THE REQUIREMENTS OF THE RULES AND REGULATIONS OF THE TEXAS BOARD OF ARCHITECTURAL EXAMINERS. NO PERSON MAY MAKE MODIFICATIONS TO THIS ELECTRONIC DRAWING FILE WITHOUT THE LANDSCAPE ARCHITECT'S EXPRESS WRITTEN PERMISSION.

No.	DATE	REVISION	APPROV.
1.	07/01/2016	CITY SITE PLAN COMMENTS	GC
2.			
3.			
4.			
5.			
6.			

**Winkelmann & Associates, Inc.**  
CONSULTING CIVIL ENGINEERS ■ SURVEYORS  
6730 HILDBEST PLAZA DR., SUITE 325 (972) 492-7098  
1000 W. CAMPBELL ST., SUITE 100 (972) 499-7098 FAX  
CITY OF TEXAS, TEXAS  
Professional Seal of Gregory A. Cuppet, Registered Professional Engineer, State of Texas, No. 2672, dated 07/13/16.

**PRELIMINARY - NOT FOR CONSTRUCTION**

**OVERALL LANDSCAPE PLAN**  
KROGER DAL565  
SWC US 380 & LAKE FOREST DR.  
MCKINNEY, TEXAS

**L-0**  
DAL565

**OVERALL LANDSCAPE PLAN**

REFERENCE SHEET L-2 FOR PLANTING NOTES AND SHEET L-3 FOR PLANT LEGEND

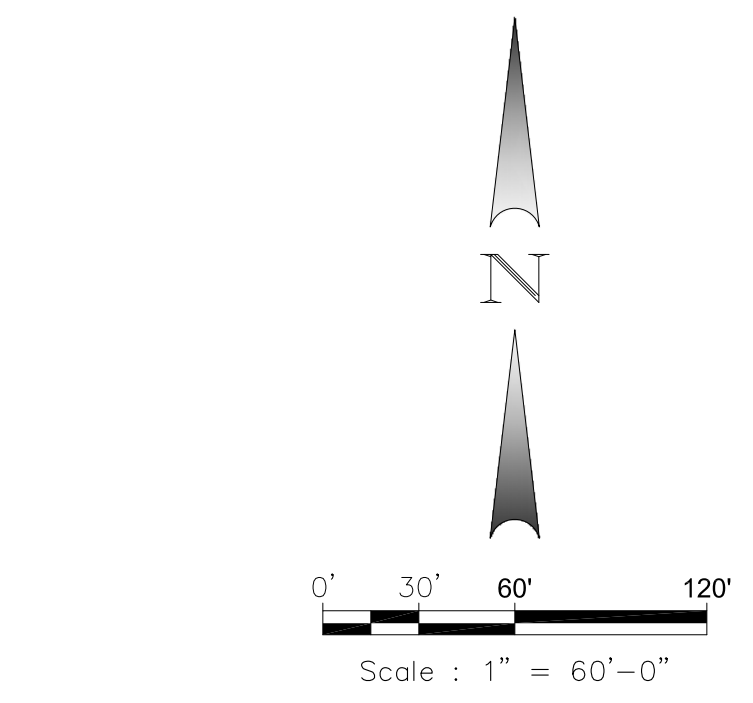


McKINNEY LANDSCAPE ORDINANCE-KROGER		05/2016	
AREA			
STREET YARD	15% OF STREET YARD SHALL BE LANDSCAPED		
	REQUIRED	PROVIDED	
	15% X 0 = NA	NA	
SITE AREA	10% OF SITE SHALL BE LANDSCAPE		
	REQUIRED	PROVIDED	
	482,891 SF X 10% = 48,289	82,131 SF	
LANDSCAPE BUFFER	20' LANDSCAPE BUFFER AT STREET FRONTAGE		
	REQUIRED	PROVIDED	
	20'	20'	
STREET FRONTAGE TREES	1 TREE PER 40' OF STREET FRONTAGE		
	REQUIRED	PROVIDED	
	0 / 40 = NA	NA	
PARKING LOT TREES	ONE TREE PER 10 PARKING SPACES		
	REQUIRED	PROVIDED	
	513 SPACES/10 = 52 TREES	62 ISLANDS	
	ALL PARKING SPACES WITHIN 65' OF TREE ISLAND/TREE AT END OF PARKING ROW		
PARKING LOT SCREEN	MINIMUM 75% OF PARKING LOT IS SCREENED		
PARKING LOT BUFFER	5' PERIMETER PARKING LOT BUFFER		

McKINNEY LANDSCAPE ORDINANCE - FUEL CENTER (LOT 15)		05/2016	
AREA			
STREET YARD	15% OF STREET YARD SHALL BE LANDSCAPED		
	REQUIRED	PROVIDED	
	15% X 15,860 = 2,379	4,782	
SITE AREA	10% OF SITE SHALL BE LANDSCAPE		
	REQUIRED	PROVIDED	
	52,370 SF X 10% = 5,237	6,017 SF	
LANDSCAPE BUFFER	20' LANDSCAPE BUFFER AT STREET FRONTAGE		
	REQUIRED	PROVIDED	
	20'	20'	
STREET FRONTAGE TREES	1 TREE PER 40' OF STREET FRONTAGE (LAKE FOREST DR.)		
	REQUIRED	PROVIDED	
	269 / 40 = 7 TREES	7 TREES	
PARKING LOT TREES	ONE TREE PER 10 PARKING SPACES		
	REQUIRED	PROVIDED	
	16 SPACES/10 = 2 TREES	2 TREES	
	ALL PARKING SPACES WITHIN 65' OF TREE ISLAND/TREE AT END OF PARKING ROW		
PARKING LOT SCREEN	MINIMUM 75% OF PARKING LOT IS SCREENED		
PARKING LOT BUFFER	5' PERIMETER PARKING LOT BUFFER		

McKINNEY LANDSCAPE ORDINANCE-(LOT 14)		05/2016	
AREA			
STREET YARD	15% OF STREET YARD SHALL BE LANDSCAPED		
	REQUIRED	PROVIDED	
	15% X 51,516 = 7,727	17,561 SF	
SITE AREA	10% OF SITE SHALL BE LANDSCAPE		
	REQUIRED	PROVIDED	
	98,065 SF X 10% = 9,807	18,774 SF	
LANDSCAPE BUFFER	20' LANDSCAPE BUFFER AT STREET FRONTAGE		
	REQUIRED	PROVIDED	
	20'	20'	
STREET FRONTAGE TREES	1 TREE PER 40' OF STREET FRONTAGE (LAKE FOREST DR.)		
	REQUIRED	PROVIDED	
	501 / 40 = 13 TREES	13 TREES	
PARKING LOT TREES	ONE TREE PER 10 PARKING SPACES		
	REQUIRED	PROVIDED	
	123 SPACES/10 = 12 TREES	12 TREES	
	ALL PARKING SPACES WITHIN 65' OF TREE ISLAND/TREE AT END OF PARKING ROW		
PARKING LOT SCREEN	MINIMUM 75% OF PARKING LOT IS SCREENED		
PARKING LOT BUFFER	5' PERIMETER PARKING LOT BUFFER		

McKINNEY LANDSCAPE ORDINANCE-LOT 9		05/2016	
AREA			
STREET YARD	15% OF STREET YARD SHALL BE LANDSCAPED		
	REQUIRED	PROVIDED	
	15% X 0 = 0	0 SF	
SITE AREA	10% OF SITE SHALL BE LANDSCAPE		
	REQUIRED	PROVIDED	
	64,860 SF X 10% = 6,486 SF	6,803 SF	
LANDSCAPE BUFFER	20' LANDSCAPE BUFFER AT STREET FRONTAGE		
	REQUIRED	PROVIDED	
	20'	20'	
STREET FRONTAGE TREES	1 TREE PER 40' OF STREET FRONTAGE		
	REQUIRED	PROVIDED	
	0 / 40 = 0 TREES	NA	
PARKING LOT TREES	ONE TREE PER 10 PARKING SPACES		
	REQUIRED	PROVIDED	
	75 SPACES/10 = 8 TREES	12 TREES	
	ALL PARKING SPACES WITHIN 65' OF TREE ISLAND/TREE AT END OF PARKING ROW		
PARKING LOT SCREEN	MINIMUM 75% OF PARKING LOT IS SCREENED		
PARKING LOT BUFFER	5' PERIMETER PARKING LOT BUFFER		



**CAUTION!!!**  
 UNDERGROUND UTILITIES ARE LOCATED IN THIS AREA. 48 HOURS PRIOR TO ANY CONSTRUCTION ACTIVITIES, CONTACT LINE LOCATES FOR FRANCHISE UTILITY INFO. CALL BEFORE YOU DIG.  
 TEXAS EXCAVATION SAFETY SYSTEM (TESS)  
 1-800-344-8377  
 TEXAS ONE CALL SYSTEMS  
 1-800-245-4545  
 LONE STAR NOTIFICATION CENTER  
 1-800-669-8344 EXT. 5

**BEFORE YOU DIG...**

**PLANT LIST KROGER LOT**

Sym	Qty	Code	Scientific Name	Common Name	Planting Size	Comments	Mature Ht
	4	Lainna	Lagerstroemia indica 'Natchez'	Crape myrtle 'Natchez'	45-Gal/8' Min	2" Cal., Single Trunk	20'
	4	Quvi	Quercus virginiana	Southern live oak	4" -Cal/12' Min	B & B	40'
	20	Qubu	Quercus buckleyi	Texas red oak	4" -Cal/12' Min	B & B	35'
	38	Ulpa	Ulmus parvifolia	Lacebark elm	4" -Cal/12' Min	B & B	30'
		Stte	Stipa tenuissima	Mexican feathergrass	1-Gal	18" O.C.	2'
		Tras	Trachelospermum asiaticum	Asian jasmine	4" Pot	12" O.C.	6"
		Cyda	Cynodon dactylon	Solid Bermuda sod	Sod	Solid	Solid

**PLANT LIST FUEL CENTER**

Sym	Qty	Code	Scientific Name	Common Name	Planting Size	Comments	Mature Ht
	3	Ulcr	Ulmus crassifolia	Cedar elm	4" -Cal/12' Min	B & B	40'
	54	Rain	Raphiolepis indica	Indian hawthorn	7-Gal.	36" O.C.	4'
	6	Qubu	Quercus buckleyi	Texas red oak	4" -Cal/12' Min	B & B	35'
	2	Ulpa	Ulmus parvifolia	Lacebark elm	4" -Cal/12' Min	B & B	30'
		Cyda	Cynodon dactylon	Solid Bermuda sod	Sod	Solid	Solid
		Stte	Stipa tenuissima	Mexican feathergrass	1-Gal	18" O.C.	2'

**PLANT LIST RETAIL LOT**

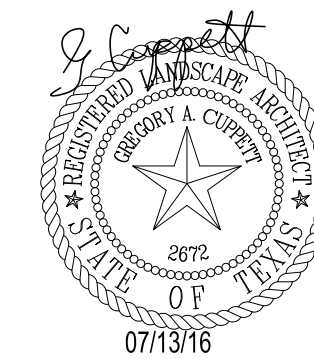
Sym	Qty	Code	Scientific Name	Common Name	Planting Size	Comments	Mature Ht
	9	Ulcr	Ulmus crassifolia	Cedar elm	4" -Cal/12' Min	B & B	40'
	9	Ulpa	Ulmus parvifolia	Lacebark elm	4" -Cal/12' Min	B & B	35'
	2	Quvi	Quercus virginiana	Southern live oak	4" -Cal/12' Min	B & B	40'
	20	IlvoN	Ilex vomitoria 'Nana'	Dwarf yaupon	5-Gal	36" O.C.	3'
	24	JuhoB	Juniperus horizontalis 'Bar Harbor'	Bar Harbor juniper	3-Gal	48" O.C.	2'
	140	Rain	Raphiolepis indica	Indian hawthorn	7-Gal.	36" O.C.	4'
	7	Qush	Quercus shumardii	Shumard oak	4" -Cal/12' Min	B & B	60'
	22	Ilne	Ilex x 'Nellie R. Stevens'	Nelly R. Stevens holly	15 Gal/6' Min	36" O.C.	15'
		Stte	Stipa tenuissima	Mexican feathergrass	1-Gal	18" O.C.	2'
		Tras	Trachelospermum asiaticum	Asian jasmine	4" Pot	12" O.C.	6"
		Cyda	Cynodon dactylon	Solid Bermuda sod	Sod	Solid	Solid

**PLANT LIST LOT 9**

Symbol	Quantity	Code	Scientific Name	Common Name	Planting Size	Comments	Mature Ht
	7	Qubu	Quercus buckleyi	Texas red oak	4" -Cal/12' Min	B & B	35'
	6	Quvi	Quercus virginiana	Southern live oak	4" -Cal/12' Min	B & B	40'
	29	Ilne	Ilex x 'Nellie R. Stevens'	Nelly R. Stevens holly	15 Gal/6' Min	36" O.C.	15'
		Tras	Trachelospermum asiaticum	Asian jasmine	4" Pot	12" O.C.	6"

**NOTE: IT SHALL BE THE RESPONSIBILITY OF THE CONTRACTOR TO CONFIRM TREE CALIPER MEASUREMENT HEIGHT ABOVE GRADE AS REQUIRED BY CITY.**

- ALL REQUIRED LANDSCAPE AREAS SHALL BE PROVIDED WITH AN AUTOMATIC UNDERGROUND IRRIGATION SYSTEM WITH RAIN AND FREEZE SENSORS AND EVAPOTRANSPIRATION (ET) WEATHER BASED CONTROLLERS AND SAID IRRIGATION SYSTEM SHALL BE DESIGNED BY A QUALIFIED PROFESSIONAL AND INSTALLED BY A LICENSED IRRIGATOR.
- SITE WILL BE MAINTAINED PER CITY OF MCKINNEY ZONING ORDINANCE 146-135.
- EXISTING TREES TO BE PRESERVED SHALL BE PROTECTED IN ACCORDANCE CITY OF MCKINNEY ZONING ORDINANCE 146-136.



THIS ELECTRONIC DRAWING FILE IS RELEASED UNDER THE AUTHORITY OF GREGORY A. CUPPETT, LANDSCAPE ARCHITECT REGISTRATION NUMBER 2672 ON 07/01/16, WHO MAINTAINS THE ORIGINAL FILE. THIS ELECTRONIC DRAWING FILE MAY BE USED AS A BACKGROUND DRAWING, PURSUANT TO RULE 3.103(F) OF THE RULES AND REGULATIONS OF THE TEXAS BOARD OF ARCHITECTURAL EXAMINERS. THE USER OF THIS ELECTRONIC DRAWING FILE AGREES TO ASSUME ALL RESPONSIBILITY FOR ANY MODIFICATION TO OR USE OF THIS DRAWING FILE THAT IS INCONSISTENT WITH THE REQUIREMENTS OF THE RULES AND REGULATIONS OF THE TEXAS BOARD OF ARCHITECTURAL EXAMINERS. NO PERSON MAY MAKE MODIFICATIONS TO THIS ELECTRONIC DRAWING FILE WITHOUT THE LANDSCAPE ARCHITECT'S EXPRESS WRITTEN PERMISSION.

**OVERALL LANDSCAPE PLAN - EXHIBIT 'G' ZC 15-0011**

**PRELIMINARY - NOT FOR CONSTRUCTION**

**LANDSCAPE CALCULATIONS**  
 KROGER DAL565  
 SWC US 380 & LAKE FOREST DR.  
 MCKINNEY, TEXAS

**L-0A**

DAL565

**Winkelmann & Associates, Inc.**  
 CONSULTING CIVIL ENGINEERS SURVEYORS  
 8750 HILDBERT PLAZA DR., SUITE 325  
 FORT WORTH, TEXAS 76114  
 (817) 498-7098  
 (817) 498-7099 FAX  
 CDR Gregory A. Cuppett, Registration No. 89,966,542  
 CDR Robert J. Zales, Registration No. 26,888,405

6.

5.

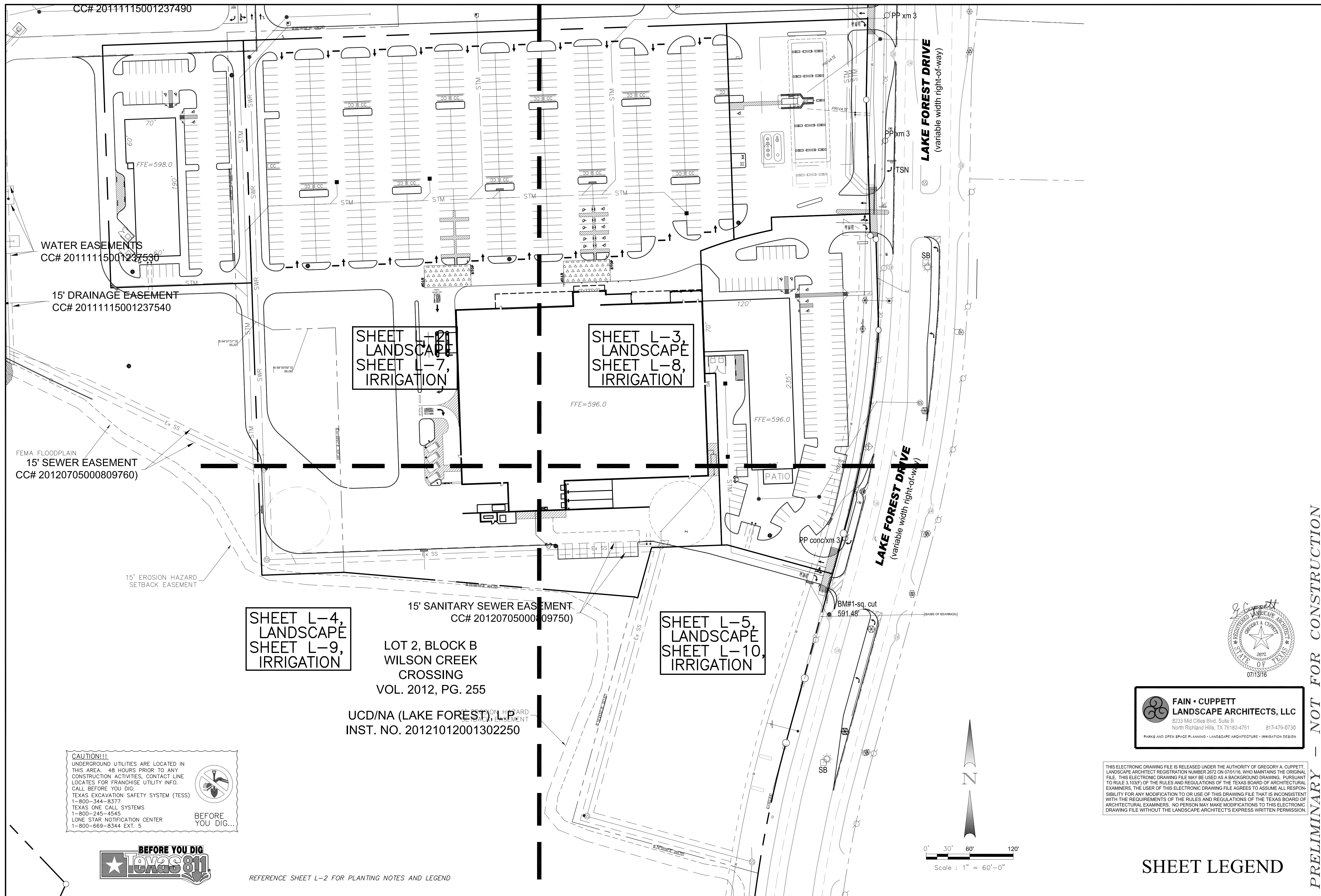
4.

3.

2.

1.

No.	DATE	REVISION
1.	07/01/2016	CITY SITE PLAN COMMENTS
2.		
3.		
4.		
5.		
6.		



**CAUTION!!!**  
 UNDERGROUND UTILITIES ARE LOCATED IN THIS AREA. 48 HOURS PRIOR TO ANY CONSTRUCTION ACTIVITIES, CONTACT LINE LOCATES FOR FRANCHISE UTILITY INFO. CALL BEFORE YOU DIG:  
 TEXAS EXCAVATION SAFETY SYSTEM (TESS)  
 1-800-344-8377  
 TEXAS ONE CALL SYSTEMS  
 1-800-245-4545  
 LONE STAR NOTIFICATION CENTER  
 1-800-669-8344 EXT. 5



REFERENCE SHEET L-2 FOR PLANTING NOTES AND LEGEND

SHEET L-4,  
 LANDSCAPE  
 SHEET L-9,  
 IRRIGATION

15' SANITARY SEWER EASEMENT  
 CC# 20120705000809750)

LOT 2, BLOCK B  
 WILSON CREEK  
 CROSSING  
 VOL. 2012, PG. 255

UCD/NA (LAKE FOREST), L.P.  
 INST. NO. 20121012001302250

SHEET L-5,  
 LANDSCAPE  
 SHEET L-10,  
 IRRIGATION

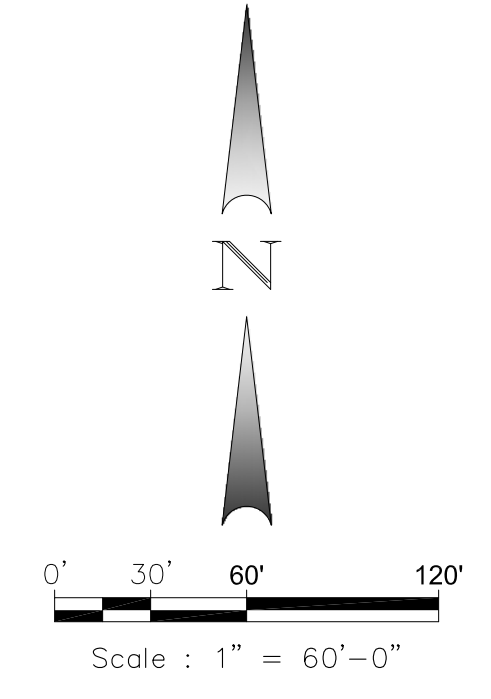
SHEET L-7,  
 IRRIGATION

SHEET L-3,  
 LANDSCAPE  
 SHEET L-8,  
 IRRIGATION

**FAIN • CUPPETT**  
**LANDSCAPE ARCHITECTS, LLC**  
 8233 Mid Cities Blvd. Suite B  
 North Richland Hills, TX 76182-4761 817-479-0730  
 PARKS AND OPEN SPACE PLANNING • LANDSCAPE ARCHITECTURE • IRRIGATION DESIGN



THIS ELECTRONIC DRAWING FILE IS RELEASED UNDER THE AUTHORITY OF GREGORY A. CUPPETT, LANDSCAPE ARCHITECT REGISTRATION NUMBER 2672 ON 07/01/16, WHO MAINTAINS THE ORIGINAL FILE. THIS ELECTRONIC DRAWING FILE MAY BE USED AS A BACKGROUND DRAWING. PURSUANT TO RULE 3.103(F) OF THE RULES AND REGULATIONS OF THE TEXAS BOARD OF ARCHITECTURAL EXAMINERS, THE USER OF THIS ELECTRONIC DRAWING FILE AGREES TO ASSUME ALL RESPONSIBILITY FOR ANY MODIFICATION TO OR USE OF THIS DRAWING FILE THAT IS INCONSISTENT WITH THE REQUIREMENTS OF THE RULES AND REGULATIONS OF THE TEXAS BOARD OF ARCHITECTURAL EXAMINERS. NO PERSON MAY MAKE MODIFICATIONS TO THIS ELECTRONIC DRAWING FILE WITHOUT THE LANDSCAPE ARCHITECT'S EXPRESS WRITTEN PERMISSION.



**SHEET LEGEND**

**PRELIMINARY - NOT FOR CONSTRUCTION**

**SHEET LEGEND**  
 KROGER DAL565  
 380 & LAKE FOREST DR.  
 MCKINNEY, TEXAS

**L-1**  
 DAL565

**Winkelmann & Associates, Inc.**  
 CONSULTING CIVIL ENGINEERS ■ SURVEYORS  
 8720 HILDEBERT PLAZA DRIVE, SUITE 325  
 FORT WORTH, TEXAS 76117  
 (817) 498-7098  
 (817) 498-7099 FAX  
 Texas Engineers Registration No. 89 06856-00  
 Surveyors Registration No. 30866-00  
 Corporation of Texas, Management & Associates, Inc.

No.	DATE	REVISION	APPROV.
1.	07/01/2016	CITY SITE PLAN COMMENTS	GC
2.			
3.			
4.			
5.			
6.			

McKINNEY LANDSCAPE ORDINANCE-KROGER			05/2016
AREA			
STREET YARD	15% OF STREET YARD SHALL BE LANDSCAPED		
	REQUIRED	PROVIDED	
	15% X 0 = NA	NA	
SITE AREA	10% OF SITE SHALL BE LANDSCAPE		
	REQUIRED	PROVIDED	
	482,891 SF X 10% = 48,289	82,131 SF	
LANDSCAPE BUFFER	20' LANDSCAPE BUFFER AT STREET FRONTAGE		
	REQUIRED	PROVIDED	
	20'	20'	
STREET FRONTAGE TREES	1 TREE PER 40' OF STREET FRONTAGE		
	REQUIRED	PROVIDED	
	0 / 40 = NA	NA	
PARKING LOT TREES	ONE TREE PER 10 PARKING SPACES		
	REQUIRED	PROVIDED	
	513 SPACES/10 = 52 TREES	62 ISLANDS	
	ALL PARKING SPACES WITHIN 65' OF TREE		
ISLAND/TREE AT END OF PARKING ROW			
PARKING LOT SCREEN	MINIMUM 75% OF PARKING LOT IS SCREENED		
PARKING LOT BUFFER	5' PERIMETER PARKING LOT BUFFER		

McKINNEY LANDSCAPE ORDINANCE - FUEL CENTER (LOT 15)			05/2016
AREA			
STREET YARD	15% OF STREET YARD SHALL BE LANDSCAPED		
	REQUIRED	PROVIDED	
	15% X 15,860 = 2,379	4,782	
SITE AREA	10% OF SITE SHALL BE LANDSCAPE		
	REQUIRED	PROVIDED	
	52,370 SF X 10% = 5,237	6,017 SF	
LANDSCAPE BUFFER	20' LANDSCAPE BUFFER AT STREET FRONTAGE		
	REQUIRED	PROVIDED	
	20'	20'	
STREET FRONTAGE TREES	1 TREE PER 40' OF STREET FRONTAGE (LAKE FOREST DR.)		
	REQUIRED	PROVIDED	
	269 / 40 = 7 TREES	7 TREES	
PARKING LOT TREES	ONE TREE PER 10 PARKING SPACES		
	REQUIRED	PROVIDED	
	16 SPACES/10 = 2 TREES	2 TREES	
	ALL PARKING SPACES WITHIN 65' OF TREE		
ISLAND/TREE AT END OF PARKING ROW			
PARKING LOT SCREEN	MINIMUM 75% OF PARKING LOT IS SCREENED		
PARKING LOT BUFFER	5' PERIMETER PARKING LOT BUFFER		

McKINNEY LANDSCAPE ORDINANCE--(LOT 14)			05/2016
AREA			
STREET YARD	15% OF STREET YARD SHALL BE LANDSCAPED		
	REQUIRED	PROVIDED	
	15% X 51,516 = 7,727	17,561 SF	
SITE AREA	10% OF SITE SHALL BE LANDSCAPE		
	REQUIRED	PROVIDED	
	98,065 SF X 10% = 9,807	18,774 SF	
LANDSCAPE BUFFER	20' LANDSCAPE BUFFER AT STREET FRONTAGE		
	REQUIRED	PROVIDED	
	20'	20'	
STREET FRONTAGE TREES	1 TREE PER 40' OF STREET FRONTAGE (LAKE FOREST DR.)		
	REQUIRED	PROVIDED	
	501 / 40 = 13 TREES	13 TREES	
PARKING LOT TREES	ONE TREE PER 10 PARKING SPACES		
	REQUIRED	PROVIDED	
	123 SPACES/10 = 12 TREES	12 TREES	
	ALL PARKING SPACES WITHIN 65' OF TREE		
ISLAND/TREE AT END OF PARKING ROW			
PARKING LOT SCREEN	MINIMUM 75% OF PARKING LOT IS SCREENED		
PARKING LOT BUFFER	5' PERIMETER PARKING LOT BUFFER		

McKINNEY LANDSCAPE ORDINANCE--(LOT 9)			05/2016
AREA			
STREET YARD	15% OF STREET YARD SHALL BE LANDSCAPED		
	REQUIRED	PROVIDED	
	15% X 0 = 0	0 SF	
SITE AREA	10% OF SITE SHALL BE LANDSCAPE		
	REQUIRED	PROVIDED	
	64,860 SF X 10% = 6,486 SF	6,803 SF	
LANDSCAPE BUFFER	20' LANDSCAPE BUFFER AT STREET FRONTAGE		
	REQUIRED	PROVIDED	
	20'	20'	
STREET FRONTAGE TREES	1 TREE PER 40' OF STREET FRONTAGE		
	REQUIRED	PROVIDED	
	0 / 40 = 0 TREES	NA	
PARKING LOT TREES	ONE TREE PER 10 PARKING SPACES		
	REQUIRED	PROVIDED	
	75 SPACES/10 = 8 TREES	12 TREES	
	ALL PARKING SPACES WITHIN 65' OF TREE		
ISLAND/TREE AT END OF PARKING ROW			
PARKING LOT SCREEN	MINIMUM 75% OF PARKING LOT IS SCREENED		
PARKING LOT BUFFER	5' PERIMETER PARKING LOT BUFFER		

**PLANTING NOTES:**

- PRIOR TO PLANTING, CONTRACTOR SHALL CONTACT LANDSCAPE ARCHITECT TO APPROVE NEW TREES ON SITE. LANDSCAPE ARCHITECT SHALL MAKE ONE TRIP TO SITE TO INSPECT TREES. ALL TREES SHALL BE STORED AND HEeled IF REQUIRED PRIOR TO CONTACTING LANDSCAPE ARCHITECT FOR INSPECTION.
- ALL PLANT MATERIAL TO BE NURSERY GROWN STOCK.
- CONTRACTOR RESPONSIBLE FOR MAINTENANCE OF ALL PLANT MATERIAL UNTIL PROJECT ACCEPTANCE.
- ALL CONTAINER GROWN PLANTS TO HAVE FULL, VIGOROUS ROOT SYSTEM, COMPLETELY ENCOMPASSING CONTAINER.
- ALL PLANTS WELL ROUNDED AND FULLY BRANCHED. ALL TREES WITH SPREAD 2/3 OF HEIGHT.
- CONTRACTOR TO PROVIDE OWNER WITH PREFERRED MAINTENANCE SCHEDULE OF ALL PLANTS AND LAWNS.
- MAINTAIN/PROTECT VISIBILITY TRIANGLE WITH PLANT MATERIAL PER CITY STANDARDS AT ALL ENTRANCES TO SITE.
- PREP ENTIRE WIDTH OF ALL DEFINED PLANTING BEDS WITH MIX AS OUTLINED IN SPECS. WHERE SHRUBS ARE LOCATED ALONG CURB, SET SHRUBS BACK FROM CURB 3 FT.
- SEE DETAIL SHEET L-6 FOR PLANTING DETAILS.
- CONTRACTOR RESPONSIBLE FOR LOCATION OF ALL UTILITIES, INCLUDING BUT NOT LIMITED TO TELEPHONE, TELECABLE, ELECTRIC, GAS, WATER AND SEWER. ANY DAMAGE TO UTILITIES TO BE REPAIRED BY CONTRACTOR AT NO COST TO OWNER.
- EXISTING TREES ARE SHOWN TO REMAIN, CONTRACTOR SHALL PRUNE WITH APPROVAL OF OWNER AND CITY ARBORIST. WORK TO INCLUDE REMOVAL OF ALL SUCKER GROWTH; DEAD AND DISEASED BRANCHES AND LIMBS; VINES, BRIARS AND OTHER INVASIVE GROWTH; AND ALL INTERFERING BRANCHES, AS WELL AS BRANCHES THAT OBSTRUCT SIGN VISIBILITY. MAKE ALL CUTS FLUSH TO REMAINING LIMB. RETAIN NATURAL SHAPE OF PLANT. ALL WORK SUBJECT TO APPROVAL OF OWNER'S REPRESENTATIVE.
- QUANTITIES ARE PROVIDED AS A COURTESY AND NOT INTENDED FOR BID PURPOSES. CONTRACTOR TO VERIFY PRIOR TO PRICING.
- INSTALL EDGING BETWEEN LAWN AND PLANTING BEDS. REFER TO SPECIFICATIONS. FILE ALL CORNERS SMOOTH.
- INSTALL CURLEX BLANKET (OR EQUAL) PER MANUFACTURERS INSTRUCTIONS ON ALL GROUND COVER/SHRUB BEDS WITH A SLOPE OF 4:1 OR GREATER.
- AT TIME OF PLAN PREPARATION, SEASONAL PLANT AVAILABILITY CANNOT BE DETERMINED. IT IS THE RESPONSIBILITY OF THE CONTRACTOR TO SECURE AND RESERVE ALL B&B PLANTS WHEN AVAILABLE IN CASE ACTUAL INSTALLATION OCCURS DURING THE OFF-SEASON. PURCHASE AND HOLD B&B PLANTS FOR LATE SEASON INSTALLATION.
- BERM ALL PARKING LOT ISLANDS AS SHOWN ON ENCLOSED DETAIL SHEET. (BERMS MAY NOT BE SHOWN ON GRADING PLAN.)
- PRIOR TO TREE PLANTING, CONTRACTOR SHALL STAKE TREE LOCATIONS FOR APPROVAL BY OWNER.

**NOTE:**

- TURF ADJACENT TO ALL PUBLIC STREETS, SLOPES IN EXCESS OF 25% AND IN ANY PARKING ISLAND DESIGNATED AS TURF SHALL BE SOLID BERMUDA SOD. GENERAL CONTRACTOR HAS THE OPTION TO HYDROMULCH BERMUDA TURF ELSEWHERE ON SITE. HOWEVER, IF GRASS IS NOT ESTABLISHED AND ACCEPTED BY OWNER IN ALL DISTURBED AREAS PRIOR TO FILING N.O.T. (NOTICE OF TERMINATION) THE GENERAL CONTRACTOR HAS TO INSTALL SOD.
- REFER TO SHEETS L-3 FOR PLANT LEGEND.
- NO LANDSCAPE PLANTINGS WITHIN 18" OF PARKING LOT CURBS.
- CONTRACTOR SHALL APPLY FRESH MULCH TO A DEPTH OF 4", TWO WEEKS PRIOR TO OPENING. DATE OF OPENING BY OWNER.
- NO LANDSCAPING SHALL BE LOCATED CLOSER THAN 10' TO A FIRE HYDRANT WITHIN ANY PUBLIC ROW OR 5' WITHIN THE PROPERTY'S INTERIOR.
- IT SHALL BE THE RESPONSIBILITY OF THE CONTRACTOR TO CONFIRM TREE CALIPER MEASUREMENT HEIGHT ABOVE GRADE AS REQUIRED BY CITY.
- ALL TREES (EXISTING AND NEWLY PLANTED) SHALL BE PRUNED TO PROVIDE VISIBILITY ONTO SITE. IT SHALL BE THE CONTRACTOR'S RESPONSIBILITY TO CONTACT APPROPRIATE DEPARTMENT FOR DIRECTION PRIOR TO ACTIVITY
- TEMPORARY IRRIGATION WILL BE REQUIRED TO ESTABLISH TURF IN ALL OFF SITE DISTURBED AREAS WITHOUT A PERMANENT IRRIGATION SYSTEM.

THE CONTRACTOR SHALL VERIFY WATER RESTRICTIONS WITHIN THE CITY OF MCKINNEY AT TIME OF PLANTING. SHOULD WATER RESTRICTIONS NOT ALLOW HYDROMULCH, HYDROSEEDING OR SPRIGGING (STAGE 3 AND STAGE 4 WATER RESTRICTIONS), AN APPROVED ALTERNATIVE FOR GRASSING SHALL BE INSTALLED.

**PLANT LIST KROGER LOT**

Sym	Qty	Code	Scientific Name	Common Name	Planting Size	Comments	Mature Ht
⊗	4	Lainna	Lagerstroemia indica 'Natchez'	Crape myrtle 'Natchez'	45-Cal/8' Min	2" Cal., Single Trunk	20'
⊙	4	Quvi	Quercus virginiana	Southern live oak	4" -Cal/12' Min	B & B	40'
⊗	20	Qubu	Quercus buckleyi	Texas red oak	4" -Cal/12' Min	B & B	35'
⊗	38	Ulpa	Ulmus parvifolia	Lacebark elm	4" -Cal/12' Min	B & B	30'
⊙		Stte	Stipa tenuissima	Mexican feathergrass	1-Gal	18" O.C.	2'
⊙		Tras	Trachelospermum asiaticum	Asian jasmine	4" Pot	12" O.C.	6"
⊙		Cyda	Cynodon dactylon	Solid Bermuda sod	Sod	Solid	Solid

**PLANT LIST FUEL CENTER**

Sym	Qty	Code	Scientific Name	Common Name	Planting Size	Comments	Mature Ht
⊗	3	Ulcr	Ulmus crassifolia	Cedar elm	4" -Cal/12' Min	B & B	40'
⊙	54	Rain	Raphiolepis indica	Indian hawthorn	7-Gal.	36" O.C.	4'
⊗	6	Qubu	Quercus buckleyi	Texas red oak	4" -Cal/12' Min	B & B	35'
⊗	2	Ulpa	Ulmus parvifolia	Lacebark elm	4" -Cal/12' Min	B & B	30'
⊙		Cyda	Cynodon dactylon	Solid Bermuda sod	Sod	Solid	Solid
⊙		Stte	Stipa tenuissima	Mexican feathergrass	1-Gal	18" O.C.	2'

**PLANT LIST RETAIL LOT**

Sym	Qty	Code	Scientific Name	Common Name	Planting Size	Comments	Mature Ht
⊗	9	Ulcr	Ulmus crassifolia	Cedar elm	4" -Cal/12' Min	B & B	40'
⊗	9	Ulpa	Ulmus parvifolia	Lacebark elm	4" -Cal/12' Min	B & B	35'
⊙	2	Quvi	Quercus virginiana	Southern live oak	4" -Cal/12' Min	B & B	40'
⊙	20	IlvoN	Ilex vomitoria 'Nana'	Dwarf yaupon	5-Gal	36" O.C.	3'
⊙	24	JuhoB	Juniperus horizontalis 'Bar Harbor'	Bar Harbor juniper	3-Gal	48" O.C.	2'
⊙	140	Rain	Raphiolepis indica	Indian hawthorn	7-Gal.	36" O.C.	4'
⊗	7	Qush	Quercus shumardii	Shumard oak	4" -Cal/12' Min	B & B	60'
⊗	22	Ilne	Ilex x 'Nellie R. Stevens'	Nelly R. Stevens holly	15 Gal/6' Min	36" O.C.	15'
⊙		Stte	Stipa tenuissima	Mexican feathergrass	1-Gal	18" O.C.	2'
⊙		Tras	Trachelospermum asiaticum	Asian jasmine	4" Pot	12" O.C.	6"
⊙		Cyda	Cynodon dactylon	Solid Bermuda sod	Sod	Solid	Solid

**PLANT LIST LOT 9**

Symbol	Quantity	Code	Scientific Name	Common Name	Planting Size	Comments	Mature Ht
⊗	7	Qubu	Quercus buckleyi	Texas red oak	4" -Cal/12' Min	B & B	35'
⊙	6	Quvi	Quercus virginiana	Southern live oak	4" -Cal/12' Min	B & B	40'
⊙	29	Ilne	Ilex x 'Nellie R. Stevens'	Nelly R. Stevens holly	15 Gal/6' Min	36" O.C.	15'
⊙		Tras	Trachelospermum asiaticum	Asian jasmine	4" Pot	12" O.C.	6"

**NOTE: IT SHALL BE THE RESPONSIBILITY OF THE CONTRACTOR TO CONFIRM TREE CALIPER MEASUREMENT HEIGHT ABOVE GRADE AS REQUIRED BY CITY.**



THIS ELECTRONIC DRAWING FILE IS RELEASED UNDER THE AUTHORITY OF GREGORY A. CUPPETT, LANDSCAPE ARCHITECT REGISTRATION NUMBER 2672 ON 07/01/16, WHO MAINTAINS THE ORIGINAL FILE. THIS ELECTRONIC DRAWING FILE MAY BE USED AS A BACKGROUND DRAWING. PURSUANT TO RULE 3.103(F) OF THE RULES AND REGULATIONS OF THE TEXAS BOARD OF ARCHITECTURAL EXAMINERS, THE USER OF THIS ELECTRONIC DRAWING FILE AGREES TO ASSUME ALL RESPONSIBILITY FOR ANY MODIFICATION TO OR USE OF THIS DRAWING FILE THAT IS INCONSISTENT WITH THE REQUIREMENTS OF THE RULES AND REGULATIONS OF THE TEXAS BOARD OF ARCHITECTURAL EXAMINERS. NO PERSON MAY MAKE MODIFICATIONS TO THIS ELECTRONIC DRAWING FILE WITHOUT THE LANDSCAPE ARCHITECT'S EXPRESS WRITTEN PERMISSION.



**TABLES AND LEGENDS**  
KROGER DAL565  
SWC US 380 & LAKE FOREST DR.  
MCKINNEY, TEXAS

**TABLES AND LEGENDS**

L-2  
DAL565

**PRELIMINARY - NOT FOR CONSTRUCTION**

No.

DATE

REVISION

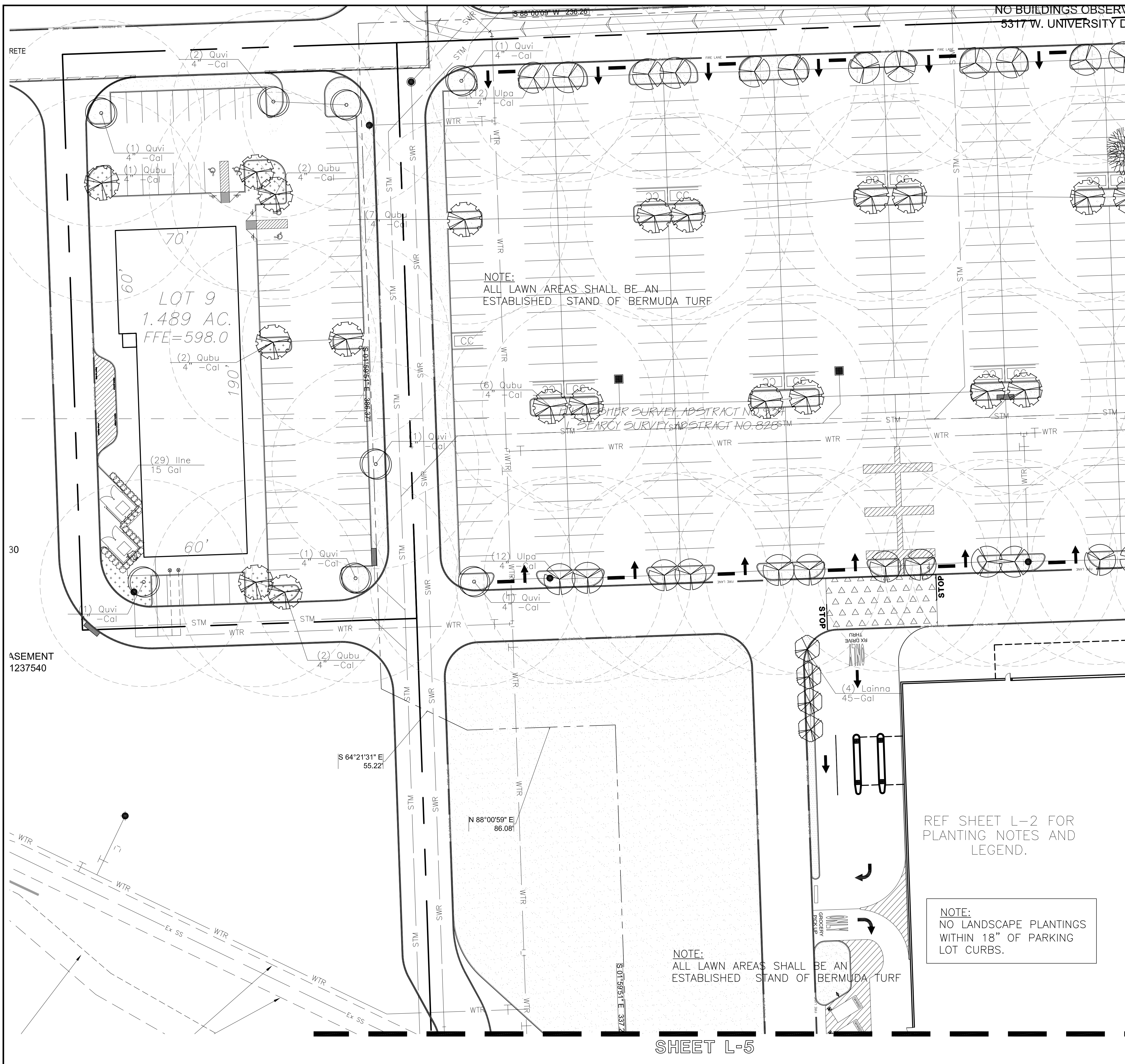
CITY SITE PLAN COMMENTS

CC

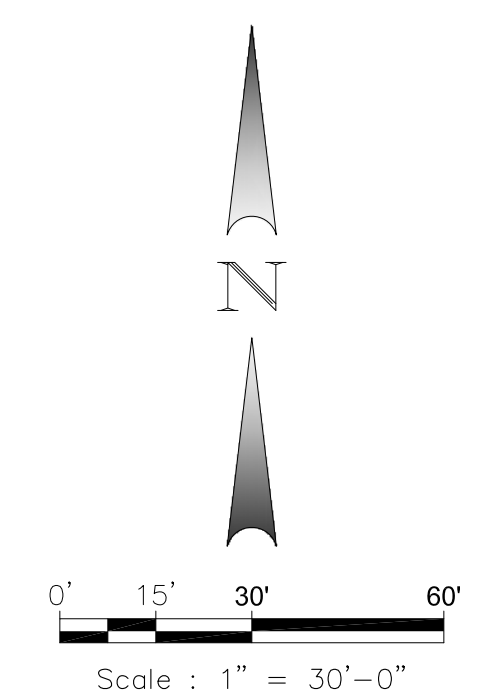
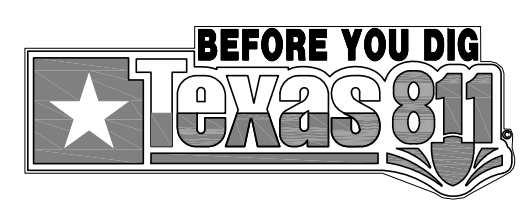
APPROV

LAST SAVED BY: JOHN July 13, 2016





**CAUTION!!!**  
 UNDERGROUND UTILITIES ARE LOCATED IN THIS AREA. 48 HOURS PRIOR TO ANY CONSTRUCTION ACTIVITIES, CONTACT LINE LOCATES FOR FRANCHISE UTILITY INFO. CALL BEFORE YOU DIG!  
 TEXAS EXCAVATION SAFETY SYSTEM (TESS) 1-800-344-8377  
 TEXAS ONE CALL SYSTEMS 1-800-245-4545  
 LONE STAR NOTIFICATION CENTER 1-800-669-8344 EXT. 5



**NOTE:**

- TURF ADJACENT TO ALL PUBLIC STREETS, SLOPES IN EXCESS OF 25% AND IN ANY PARKING ISLAND DESIGNATED AS TURF SHALL BE SOLID BERMUDA SOD. GENERAL CONTRACTOR HAS THE OPTION TO HYDROMULCH BERMUDA TURF ELSEWHERE ON SITE. HOWEVER, IF GRASS IS NOT ESTABLISHED AND ACCEPTED BY OWNER IN ALL DISTURBED AREAS PRIOR TO FILING N.O.T. (NOTICE OF TERMINATION) THE GENERAL CONTRACTOR HAS TO INSTALL SOD.
- REFER TO SHEETS L-2 FOR PLANT LEGEND.
- NO LANDSCAPE PLANTINGS WITHIN 18" OF PARKING LOT CURBS.
- CONTRACTOR SHALL APPLY FRESH MULCH TO A DEPTH OF 4", TWO WEEKS PRIOR TO OPENING. DATE OF OPENING BY OWNER.
- NO LANDSCAPING SHALL BE LOCATED CLOSER THAN 10' TO A FIRE HYDRANT WITHIN ANY PUBLIC ROW OR 5' WITHIN THE PROPERTY'S INTERIOR.
- IT SHALL BE THE RESPONSIBILITY OF THE CONTRACTOR TO CONFIRM TREE CALIPER MEASUREMENT HEIGHT ABOVE GRADE AS REQUIRED BY CITY.
- ALL TREES (EXISTING AND NEWLY PLANTED) SHALL BE PRUNED TO PROVIDE VISIBILITY ONTO SITE. IT SHALL BE THE CONTRACTOR'S RESPONSIBILITY TO CONTACT APPROPRIATE DEPARTMENT FOR DIRECTION PRIOR TO ACTIVITY
- TEMPORARY IRRIGATION WILL BE REQUIRED TO ESTABLISH TURF IN ALL OFF SITE DISTURBED AREAS WITHOUT A PERMANENT IRRIGATION SYSTEM.
- PRIOR TO TREE PLANTING, CONTRACTOR SHALL STAKE TREE LOCATIONS FOR APPROVAL BY OWNER.

THE CONTRACTOR SHALL VERIFY WATER RESTRICTIONS WITHIN THE CITY OF MCKINNEY AT TIME OF PLANTING. SHOULD WATER RESTRICTIONS NOT ALLOW HYDROMULCH, HYDROSEEDING OR SPRIGGING (STAGE 3 AND STAGE 4 WATER RESTRICTIONS), AN APPROVED ALTERNATIVE FOR GRASSING SHALL BE INSTALLED.

**FAIN • CUPPET**  
**LANDSCAPE ARCHITECTS, LLC**  
 8233 Mid Cities Blvd., Suite B North Richland Hills, TX 76182-4761 817-479-0730  
 PARKS AND OPEN SPACE PLANNING • LANDSCAPE ARCHITECTURE • IRRIGATION DESIGN



THIS ELECTRONIC DRAWING FILE IS RELEASED UNDER THE AUTHORITY OF JOHN R. FAIN, LANDSCAPE ARCHITECT REGISTRATION NUMBER 805 ON 07/01/16, WHO MAINTAINS THE ORIGINAL FILE. THIS ELECTRONIC DRAWING FILE MAY BE USED AS A BACKGROUND DRAWING. PURSUANT TO RULE 3.103(F) OF THE RULES AND REGULATIONS OF THE TEXAS BOARD OF ARCHITECTURAL EXAMINERS, THE USER OF THIS ELECTRONIC DRAWING FILE AGREES TO ASSUME ALL RESPONSIBILITY FOR ANY MODIFICATION TO OR USE OF THIS DRAWING FILE THAT IS INCONSISTENT WITH THE REQUIREMENTS OF THE RULES AND REGULATIONS OF THE TEXAS BOARD OF ARCHITECTURAL EXAMINERS. NO PERSON MAY MAKE MODIFICATIONS TO THIS ELECTRONIC DRAWING FILE WITHOUT THE LANDSCAPE ARCHITECT'S EXPRESS WRITTEN PERMISSION.

REF SHEET L-2 FOR PLANTING NOTES AND LEGEND.

**NOTE:**  
 NO LANDSCAPE PLANTINGS WITHIN 18" OF PARKING LOT CURBS.

**NOTE:**  
 ALL LAWN AREAS SHALL BE AN ESTABLISHED STAND OF BERMUDA TURF

SHEET L-4

SHEET L-5

LANDSCAPE PLAN

PRELIMINARY - NOT FOR CONSTRUCTION

LANDSCAPE PLAN  
 KROGER DAL565  
 SWC US 380 & LAKE FOREST DR.  
 MCKINNEY, TEXAS

L-3  
 DAL565

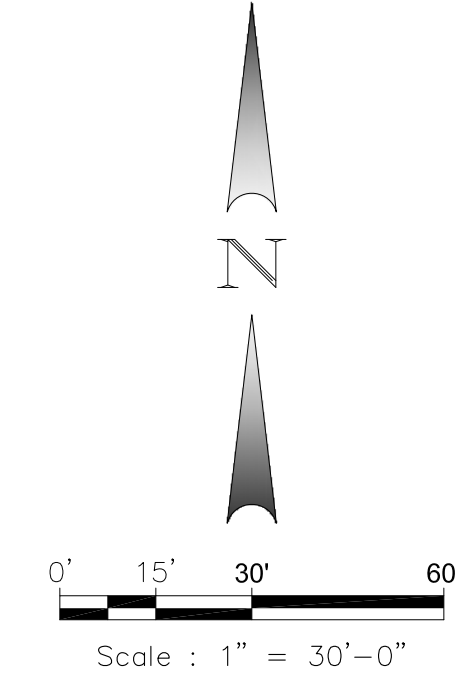
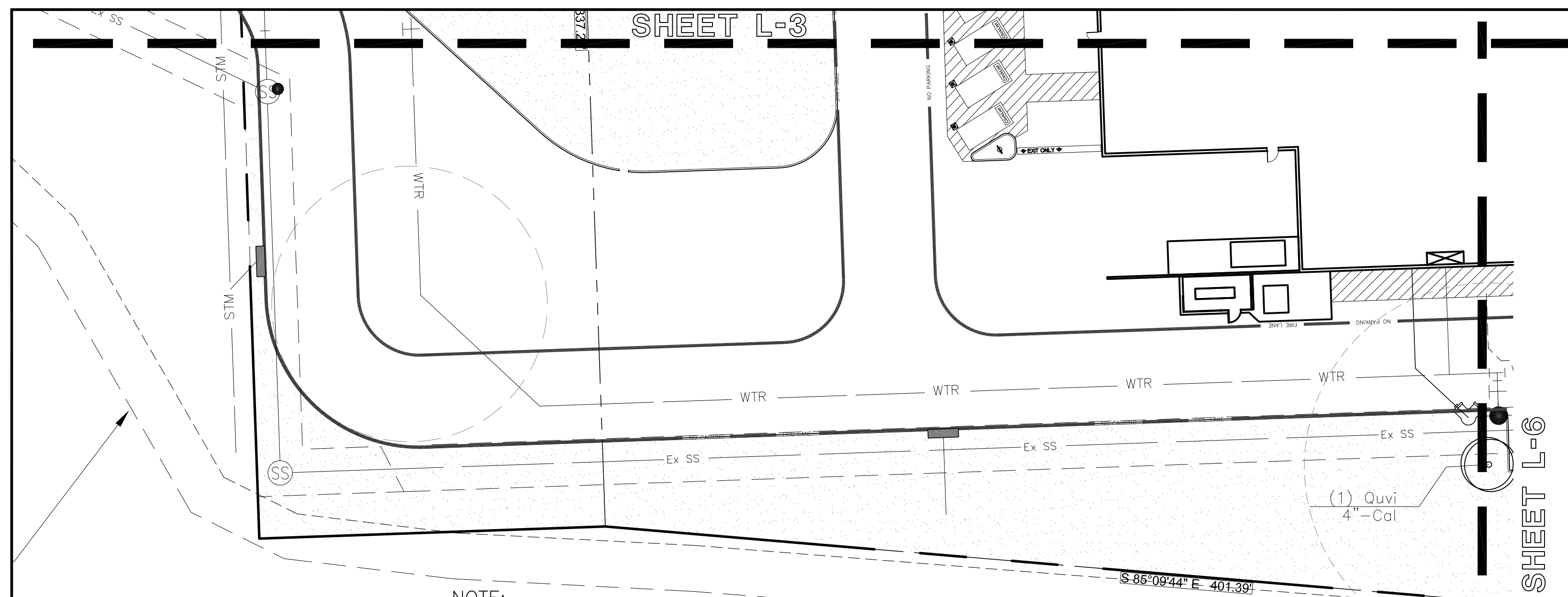
**Winkelmann & Associates, Inc.**  
 CONSULTING CIVIL ENGINEERS SURVEYORS  
 8720 HILDCREST PLAZA DR., SUITE 325 (972) 492-7098  
 DALLAS, TEXAS 75243 (972) 492-7098 FAX  
 Texas Engineers Registration No. 89 0686-03  
 State of Texas Registration No. 0000000000  
 CDR/Professional Surveyor, Instrumental & Associates, Inc.

No.	DATE	REVISION	APPROV.
1.	07/01/2016	CITY SITE PLAN COMMENTS	CC
2.			
3.			
4.			
5.			
6.			









NOTE:  
ALL LAWN AREAS SHALL BE AN  
ESTABLISHED STAND OF BERMUDA TURF

**15' SANITARY SEWER EASEMENT**

**CC# 201207050008097**

REF SHEET L-2 FOR PLANTING NOTES  
AND LEGEND.

**LOT 2, BLOCK B  
WILSON CREEK**


**NOTE:**

- TURF ADJACENT TO ALL PUBLIC STREETS, SLOPES IN EXCESS OF 25% AND IN ANY PARKING ISLAND DESIGNATED AS TURF SHALL BE SOLID BERMUDA SOD. GENERAL CONTRACTOR HAS THE OPTION TO HYDROMULCH BERMUDA TURF ELSEWHERE ON SITE. HOWEVER, IF GRASS IS NOT ESTABLISHED AND ACCEPTED BY OWNER IN ALL DISTURBED AREAS PRIOR TO FILING N.O.T. (NOTICE OF TERMINATION) THE GENERAL CONTRACTOR HAS TO INSTALL SOD.
- REFER TO SHEETS L-2 FOR PLANT LEGEND.
- NO LANDSCAPE PLANTINGS WITHIN 18" OF PARKING LOT CURBS.
- CONTRACTOR SHALL APPLY FRESH MULCH TO A DEPTH OF 4", TWO WEEKS PRIOR TO OPENING. DATE OF OPENING BY OWNER.
- NO LANDSCAPING SHALL BE LOCATED CLOSER THAN 10' TO A FIRE HYDRANT WITHIN ANY PUBLIC ROW OR 5' WITHIN THE PROPERTY'S INTERIOR.
- IT SHALL BE THE RESPONSIBILITY OF THE CONTRACTOR TO CONFIRM TREE CALIPER MEASUREMENT HEIGHT ABOVE GRADE AS REQUIRED BY CITY.
- ALL TREES (EXISTING AND NEWLY PLANTED) SHALL BE PRUNED TO PROVIDE VISIBILITY ONTO SITE. IT SHALL BE THE CONTRACTOR'S RESPONSIBILITY TO CONTACT APPROPRIATE DEPARTMENT FOR DIRECTION PRIOR TO ACTIVITY
- TEMPORARY IRRIGATION WILL BE REQUIRED TO ESTABLISH TURF IN ALL OFF SITE DISTURBED AREAS WITHOUT A PERMANENT IRRIGATION SYSTEM.
- PRIOR TO TREE PLANTING, CONTRACTOR SHALL STAKE TREE LOCATIONS FOR APPROVAL BY OWNER.

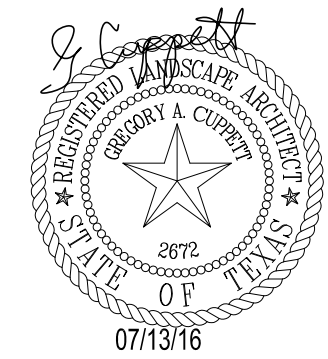
NOTE:  
NO LANDSCAPE PLANTINGS  
WITHIN 18" OF PARKING  
LOT CURBS.

THE CONTRACTOR SHALL VERIFY WATER RESTRICTIONS WITHIN THE CITY OF MCKINNEY AT TIME OF PLANTING. SHOULD WATER RESTRICTIONS NOT ALLOW HYDROMULCH, HYDROSEEDING OR SPRIGGING (STAGE 3 AND STAGE 4 WATER RESTRICTIONS), AN APPROVED ALTERNATIVE FOR GRASSING SHALL BE INSTALLED.

**CAUTION!!!**  
UNDERGROUND UTILITIES ARE LOCATED IN THIS AREA. 48 HOURS PRIOR TO ANY CONSTRUCTION ACTIVITIES, CONTACT LINE LOCATES FOR FRANCHISE UTILITY INFO.  
CALL BEFORE YOU DIG:  
TEXAS EXCAVATION SAFETY SYSTEM (TESS)  
1-800-344-8377  
TEXAS ONE CALL SYSTEMS  
1-800-245-4545  
LONE STAR NOTIFICATION CENTER  
1-800-669-8344 EXT. 5



**BEFORE YOU DIG...**



THIS ELECTRONIC DRAWING FILE IS RELEASED UNDER THE AUTHORITY OF GREGORY A. CUPPET, LANDSCAPE ARCHITECT REGISTRATION NUMBER 2672 ON 07/01/16, WHO MAINTAINS THE ORIGINAL FILE. THIS ELECTRONIC DRAWING FILE MAY BE USED AS A BACKGROUND DRAWING. PURSUANT TO RULE 3.103(F) OF THE RULES AND REGULATIONS OF THE TEXAS BOARD OF ARCHITECTURAL EXAMINERS, THE USER OF THIS ELECTRONIC DRAWING FILE AGREES TO ASSUME ALL RESPONSIBILITY FOR ANY MODIFICATION TO OR USE OF THIS DRAWING FILE THAT IS INCONSISTENT WITH THE REQUIREMENTS OF THE RULES AND REGULATIONS OF THE TEXAS BOARD OF ARCHITECTURAL EXAMINERS. NO PERSON MAY MAKE MODIFICATIONS TO THIS ELECTRONIC DRAWING FILE WITHOUT THE LANDSCAPE ARCHITECT'S EXPRESS WRITTEN PERMISSION.

**LANDSCAPE PLAN**

**PRELIMINARY - NOT FOR CONSTRUCTION**

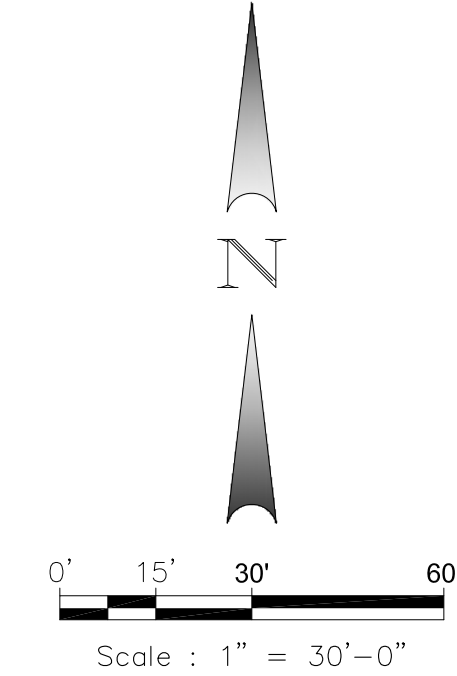
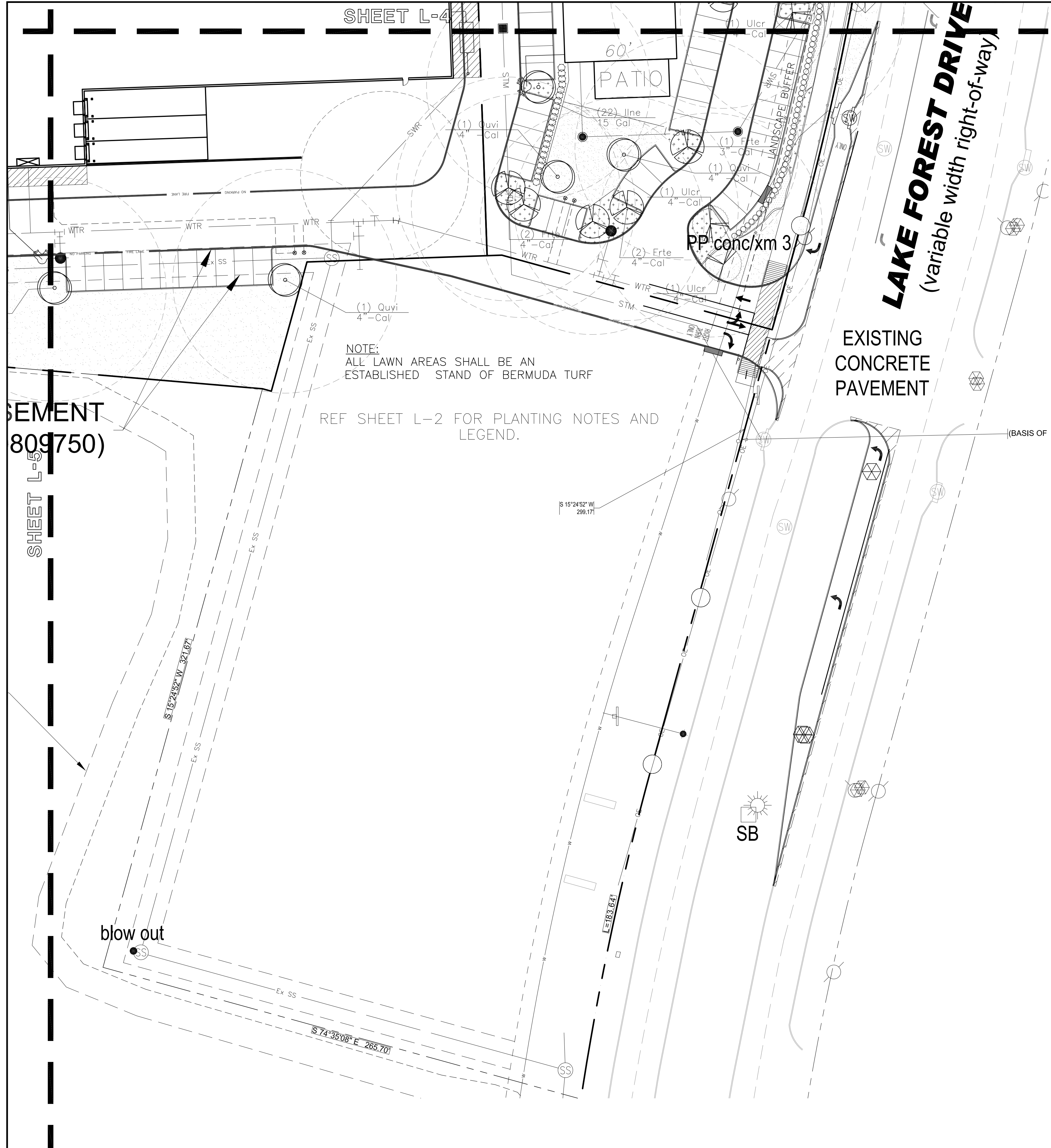
**LANDSCAPE PLAN**  
KROGER DAL565  
SWC US 380 & LAKE FOREST DR.  
MCKINNEY, TEXAS

L-5  
DAL565



**Winkelmann & Associates, Inc.**  
CONSULTING CIVIL ENGINEERS ■ SURVEYORS  
6750 HILDCREST PLAZA DR., SUITE 325 (972) 498-7098  
Texas Engineers Registration No. 89 (972) 498-7098 FAX  
CORPORATE OFFICE: (972) 498-7098  
10000 Park 24th, Irving, Texas 75039

No.	DATE	REVISION	APPROV.
6.			
5.			
4.			
3.			
2.	07/01/2016	CITY SITE PLAN COMMENTS	CC
1.			



NOTE:  
ALL LAWN AREAS SHALL BE AN  
ESTABLISHED STAND OF BERMUDA TURF

REF SHEET L-2 FOR PLANTING NOTES AND  
LEGEND.

EXISTING  
CONCRETE  
PAVEMENT

**LAKE FOREST DRIVE**  
(variable width right-of-way)

**NOTE:**

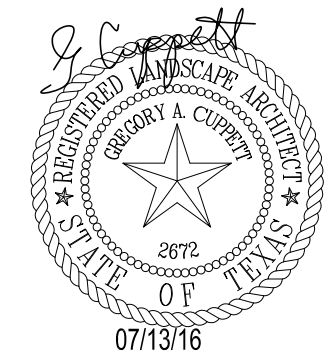
- TURF ADJACENT TO ALL PUBLIC STREETS, SLOPES IN EXCESS OF 25% AND IN ANY PARKING ISLAND DESIGNATED AS TURF SHALL BE SOLID BERMUDA SOD. GENERAL CONTRACTOR HAS THE OPTION TO HYDROMULCH BERMUDA TURF ELSEWHERE ON SITE. HOWEVER, IF GRASS IS NOT ESTABLISHED AND ACCEPTED BY OWNER IN ALL DISTURBED AREAS PRIOR TO FILING N.O.T. (NOTICE OF TERMINATION) THE GENERAL CONTRACTOR HAS TO INSTALL SOD.
- REFER TO SHEETS L-2 FOR PLANT LEGEND.
- NO LANDSCAPE PLANTINGS WITHIN 18" OF PARKING LOT CURBS.
- CONTRACTOR SHALL APPLY FRESH MULCH TO A DEPTH OF 4", TWO WEEKS PRIOR TO OPENING. DATE OF OPENING BY OWNER.
- NO LANDSCAPING SHALL BE LOCATED CLOSER THAN 10' TO A FIRE HYDRANT WITHIN ANY PUBLIC ROW OR 5' WITHIN THE PROPERTY'S INTERIOR.
- IT SHALL BE THE RESPONSIBILITY OF THE CONTRACTOR TO CONFIRM TREE CALIPER MEASUREMENT HEIGHT ABOVE GRADE AS REQUIRED BY CITY.
- ALL TREES (EXISTING AND NEWLY PLANTED) SHALL BE PRUNED TO PROVIDE VISIBILITY ONTO SITE. IT SHALL BE THE CONTRACTOR'S RESPONSIBILITY TO CONTACT APPROPRIATE DEPARTMENT FOR DIRECTION PRIOR TO ACTIVITY
- TEMPORARY IRRIGATION WILL BE REQUIRED TO ESTABLISH TURF IN ALL OFF SITE DISTURBED AREAS WITHOUT A PERMANENT IRRIGATION SYSTEM.
- PRIOR TO TREE PLANTING, CONTRACTOR SHALL STAKE TREE LOCATIONS FOR APPROVAL BY OWNER.

NOTE:  
NO LANDSCAPE PLANTINGS  
WITHIN 18" OF PARKING  
LOT CURBS.

THE CONTRACTOR SHALL VERIFY WATER RESTRICTIONS WITHIN THE CITY OF MCKINNEY AT TIME OF PLANTING. SHOULD WATER RESTRICTIONS NOT ALLOW HYDROMULCH, HYDROSEEDING OR SPRIGGING (STAGE 3 AND STAGE 4 WATER RESTRICTIONS), AN APPROVED ALTERNATIVE FOR GRASSING SHALL BE INSTALLED.

**CAUTION!!!**  
UNDERGROUND UTILITIES ARE LOCATED IN THIS AREA. 48 HOURS PRIOR TO ANY CONSTRUCTION ACTIVITIES, CONTACT LINE LOCATES FOR FRANCHISE UTILITY INFO. CALL BEFORE YOU DIG:  
TEXAS EXCAVATION SAFETY SYSTEM (TESS)  
1-800-344-8377  
TEXAS ONE CALL SYSTEMS  
1-800-245-4545  
LONE STAR NOTIFICATION CENTER  
1-800-669-8344 EXT. 5

**FAIN • CUPPET**  
**LANDSCAPE ARCHITECTS, LLC**  
8233 Mid Cities Blvd. Suite B  
North Richland Hills, TX 76182-4761 817-479-0730  
PARKS AND OPEN SPACE PLANNING • LANDSCAPE ARCHITECTURE • IRRIGATION DESIGN



THIS ELECTRONIC DRAWING FILE IS RELEASED UNDER THE AUTHORITY OF GREGORY A. CUPPET, LANDSCAPE ARCHITECT REGISTRATION NUMBER 2672 ON 07/01/16, WHO MAINTAINS THE ORIGINAL FILE. THIS ELECTRONIC DRAWING FILE MAY BE USED AS A BACKGROUND DRAWING. PURSUANT TO RULE 3.103(F) OF THE RULES AND REGULATIONS OF THE TEXAS BOARD OF ARCHITECTURAL EXAMINERS, THE USER OF THIS ELECTRONIC DRAWING FILE AGREES TO ASSUME ALL RESPONSIBILITY FOR ANY MODIFICATION TO OR USE OF THIS DRAWING FILE THAT IS INCONSISTENT WITH THE REQUIREMENTS OF THE RULES AND REGULATIONS OF THE TEXAS BOARD OF ARCHITECTURAL EXAMINERS. NO PERSON MAY MAKE MODIFICATIONS TO THIS ELECTRONIC DRAWING FILE WITHOUT THE LANDSCAPE ARCHITECT'S EXPRESS WRITTEN PERMISSION.

PRELIMINARY - NOT FOR CONSTRUCTION

**LANDSCAPE PLAN**  
KROGER DAL565  
SWC US 380 & LAKE FOREST DR.  
MCKINNEY, TEXAS

L-6  
DAL565

**Winkelmann & Associates, Inc.**  
CONSULTING CIVIL ENGINEERS ■ SURVEYORS  
6750 HILDBEST PLAZA DRIVE, SUITE 325  
DALLAS, TEXAS 75231  
(972) 498-7098  
TELEFAX (972) 498-7099 FAX  
CORPORATE OFFICE: (972) 498-7099  
www.winkelmann.com

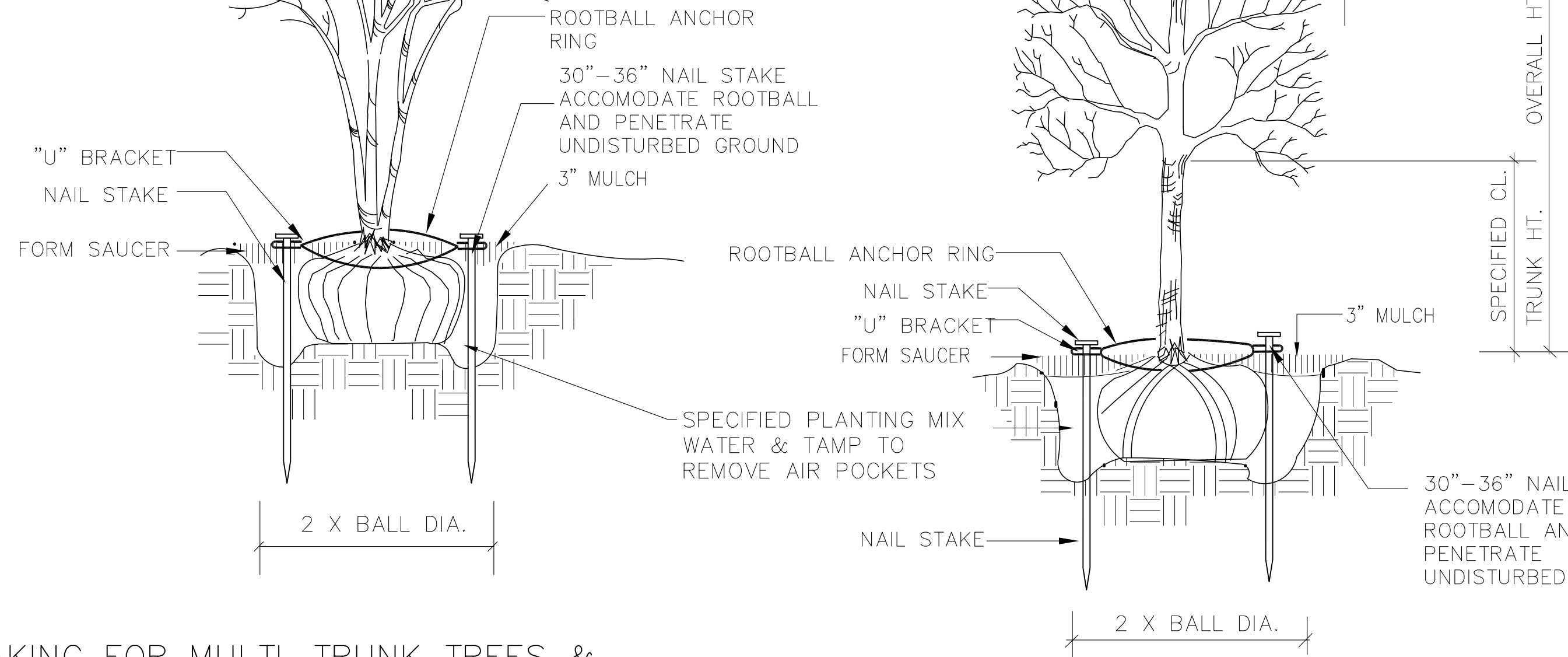
No.	DATE	REVISION	APPROV.
1.	07/01/2016	CITY SITE PLAN COMMENTS	GC
2.			
3.			
4.			
5.			
6.			



Contact Information:  
 TREE STAKE SOLUTIONS  
 www.treestakesolutions.com  
 JEFF TULEY  
 903-676-6143

THIN BRANCHES BY 1/3  
 RETAINING SHAPE OF PLANT.  
 (DO NOT CUT LEADER.)

ALL TREES  
 - PLANT SO THAT TOP OF ROOT  
 BALL IS 2" ABOVE THE  
 FINISHED GRADE  
 - PAINT ALL CUTS OVER 1" DIA.  
 - FLAG GUYING WIRES WITH  
 SURVEYOR TAPE

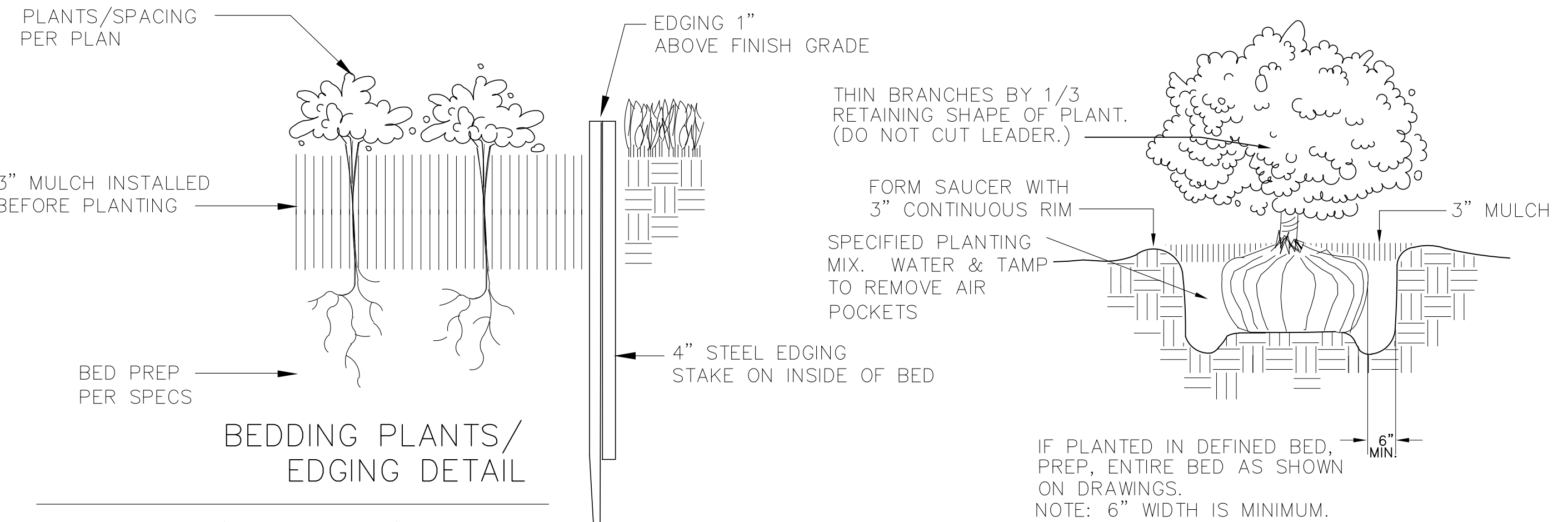


STAKING FOR MULTI-TRUNK TREES &  
 TREES 2" CAL. & UNDER

SCALE: NOT TO SCALE

SAFETY STAKE BY TREE STAKE SOLUTIONS

SCALE: NOT TO SCALE

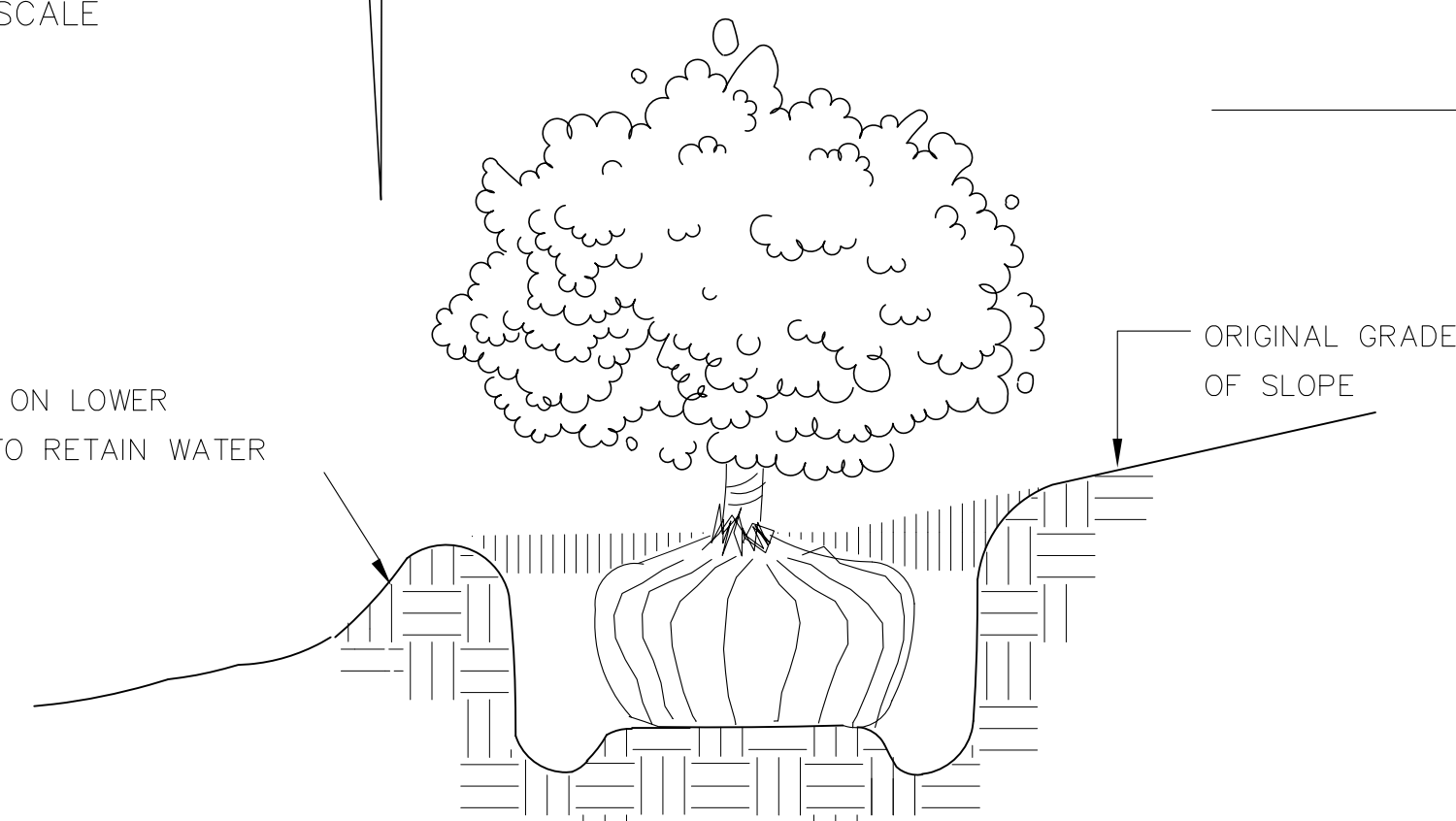


SCALE: NOT TO SCALE

SHRUB PLANTING

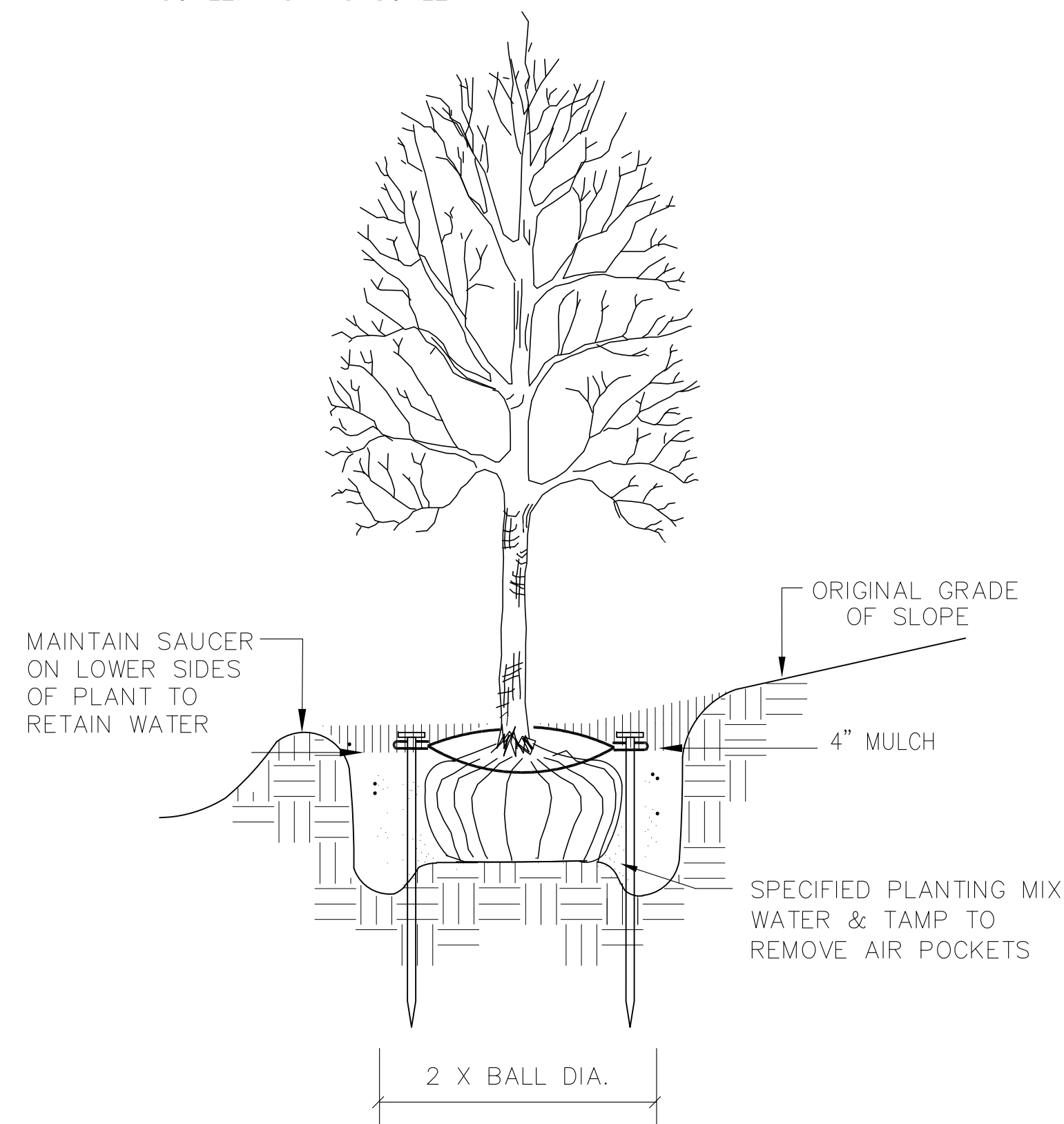
SCALE: NOT TO SCALE

MAINTAIN SAUCER ON LOWER  
 SIDES OF PLANT TO RETAIN WATER



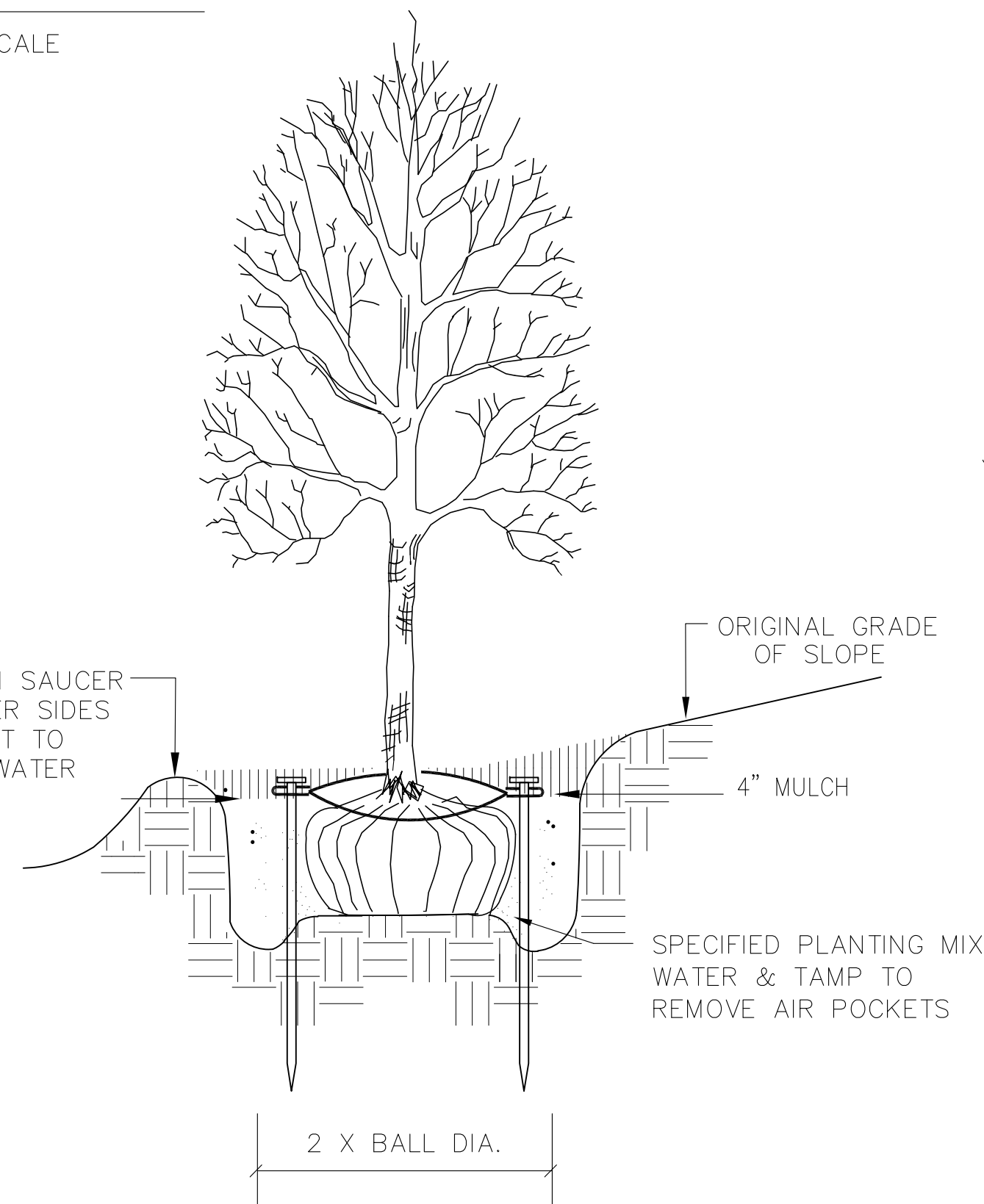
SHRUB PLANTING ON SLOPES

SCALE: NOT TO SCALE



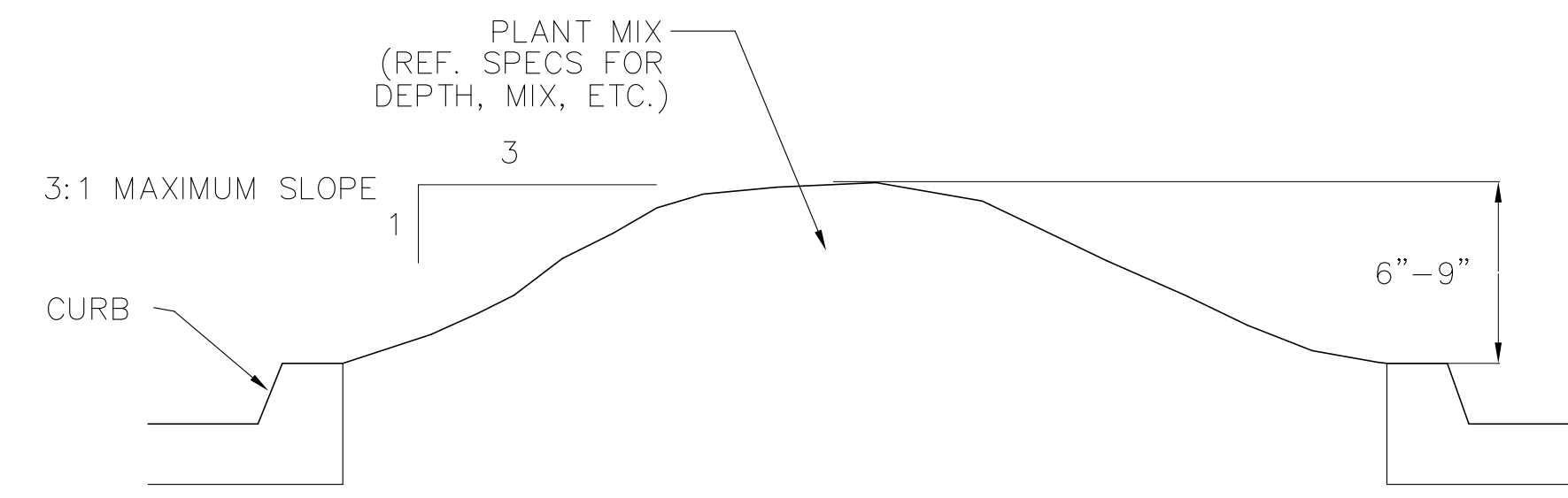
TREES PLANTING ON SLOPES

SCALE: NOT TO SCALE



TREES PLANTING ON SLOPES

SCALE: NOT TO SCALE



TYPICAL PARKING LOT ISLAND MOUNDING

SCALE: NOT TO SCALE

**FAIN • CUPPET**  
**LANDSCAPE ARCHITECTS, LLC**  
 8233 Mid Cities Blvd., Suite B  
 North Richland Hills, TX 76182-4761 817-479-0730  
 PARKS AND OPEN SPACE PLANNING • LANDSCAPE ARCHITECTURE • IRRIGATION DESIGN



THIS ELECTRONIC DRAWING FILE IS RELEASED UNDER THE AUTHORITY OF GREGORY A. CUPPET, LANDSCAPE ARCHITECT REGISTRATION NUMBER 2672 ON 07/01/16, WHO MAINTAINS THE ORIGINAL FILE. THIS ELECTRONIC DRAWING FILE MAY BE USED AS A BACKGROUND DRAWING, PURSUANT TO RULE 3.103(F) OF THE RULES AND REGULATIONS OF THE TEXAS BOARD OF ARCHITECTURAL EXAMINERS. THE USER OF THIS ELECTRONIC DRAWING FILE AGREES TO ASSUME ALL RESPONSIBILITY FOR ANY MODIFICATION TO OR USE OF THIS DRAWING FILE THAT IS INCONSISTENT WITH THE REQUIREMENTS OF THE RULES AND REGULATIONS OF THE TEXAS BOARD OF ARCHITECTURAL EXAMINERS. NO PERSON MAY MAKE MODIFICATIONS TO THIS ELECTRONIC DRAWING FILE WITHOUT THE LANDSCAPE ARCHITECT'S EXPRESS WRITTEN PERMISSION.

PLANTING DETAILS

PRELIMINARY - NOT FOR CONSTRUCTION

PLANTING DETAILS  
 KROGER DAL565  
 SWC US 380 & LAKE FOREST DR.  
 MCKINNEY, TEXAS

[-] 7  
 DAL565

**Winkelmann & Associates, Inc.**  
 CONSULTING CIVIL ENGINEERS ■ SURVEYORS  
 6720 HILDBEST PLAZA DR., SUITE 325  
 FORT WORTH, TEXAS 76116  
 (817) 492-7000  
 (817) 492-7000 FAX  
 Copyright © 2016, Winkelmann & Associates, Inc.

No.	DATE	REVISION	APPROV.
6.			
5.			
4.			
3.			
2.	07/01/2016	CITY SITE PLAN COMMENTS	GC
1.			