

Path: S:\MCKGIS\Notification\Projects\2013\13-096Z.mxd

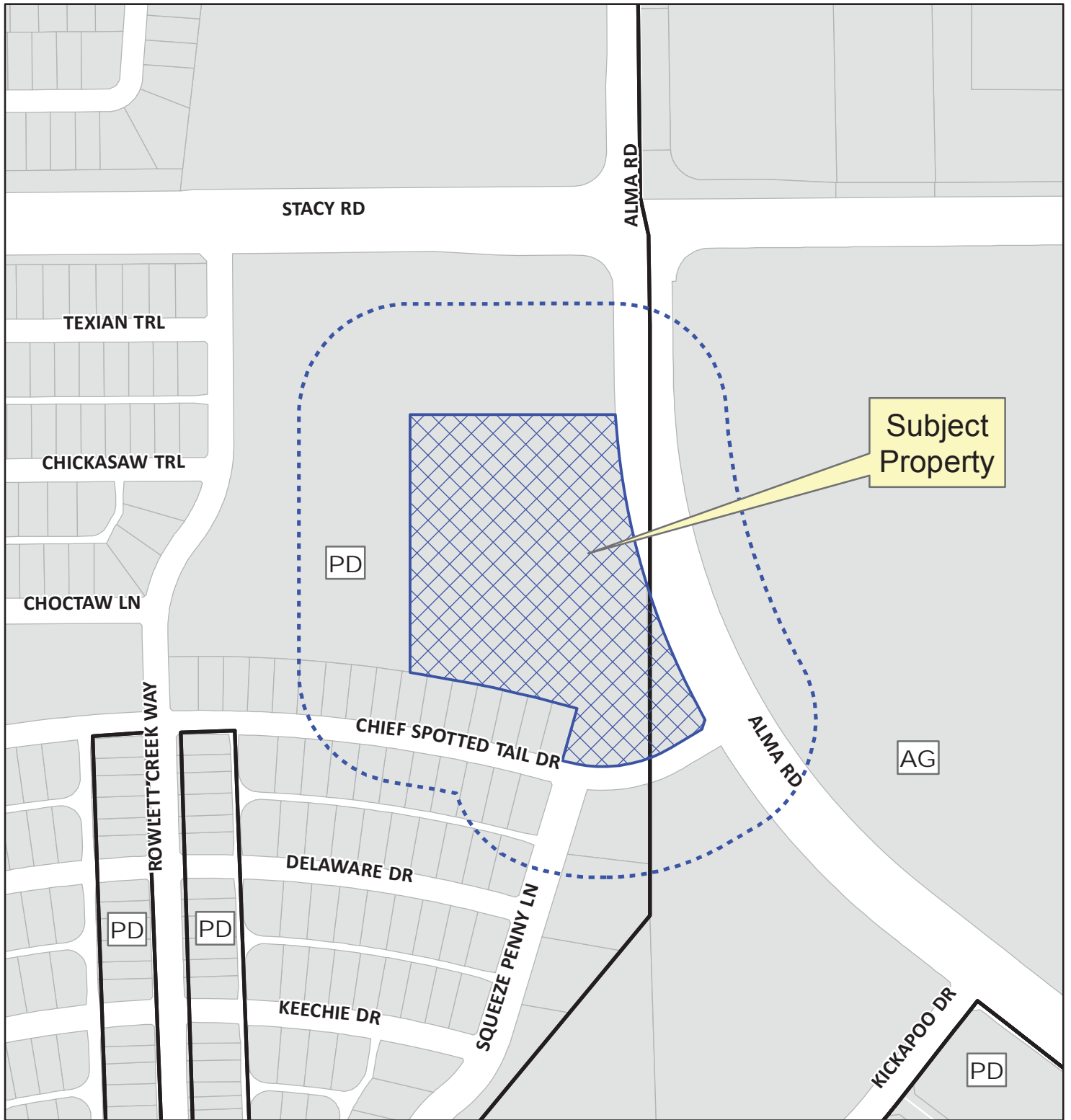
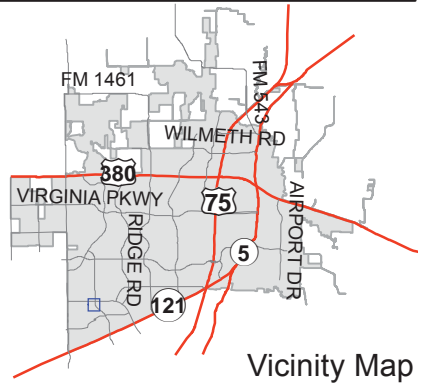


Exhibit A

Notification Map

Case: 13-096Z

--- 200' Notification Buffer



DISCLAIMER: This map and information contained in it were developed exclusively for use by the City of McKinney. Any use or reliance on this map by anyone else is at that party's risk and without liability to the City of McKinney, its officials or employees for any discrepancies, errors, or variances which may exist.

PROJECT DATA

- TOTAL SITE AREA: 6.93 ACRES (297,458 SF)
 - CURRENT ZONING: PLANNED DEVELOPMENT (PD-D-02-07)
 - BUILDING SETBACK: FRONT-F: 6', REAR-S: 5', SIDE-S: 5'
 - LANDSCAPE SETBACK: NO SETBACK REQUIREMENTS
 - MAX. BUILDING HEIGHT: 40' (SEE EXTERIOR BUILDING ELEVATIONS, SHEET AE-200 (A&B&C&D&E))
6. BUILDING AREA:
- | | |
|---------|--------------|
| LEVEL 1 | = 45,361 GSF |
| LEVEL 2 | = 28,350 GSF |
| LEVEL 3 | = 25,107 GSF |
| TOTAL | = 98,818 GSF |
7. UNIT TYPES
- | | |
|--|-------------|
| REHAB & SKILLED NURSING FACILITY (N/F) | = 46 UNITS |
| PRIVATE ROOM | = 3 UNITS |
| 557 GSF | |
| ASSISTED LIVING (A/L) | = 12 UNITS |
| 432 GSF | |
| STUDIO | = 35 UNITS |
| 1 BED / 1 BATH | = 3 UNITS |
| 499 GSF | |
| 1 BED + DEN | = 3 UNITS |
| 726 GSF | |
| MEMORY CARE (M/C) | = 18 UNITS |
| 282 GSF | |
| TOTAL | = 117 UNITS |

PERMITTED USES

- ASSISTED LIVING AND INDEPENDENT LIVING

RECEIVED
By Kathy Wright at 10:41 am, Jun 14, 2013

LEGEND

- | SYMBOL | DESCRIPTION |
|--------|-------------------|
| --- | PROPERTY LINE |
| - - - | LANDSCAPE SETBACK |
| → | TRAFFIC FLOW |
| [] | LANDSCAPE AREA |

VICINITY MAP



NOT TO SCALE

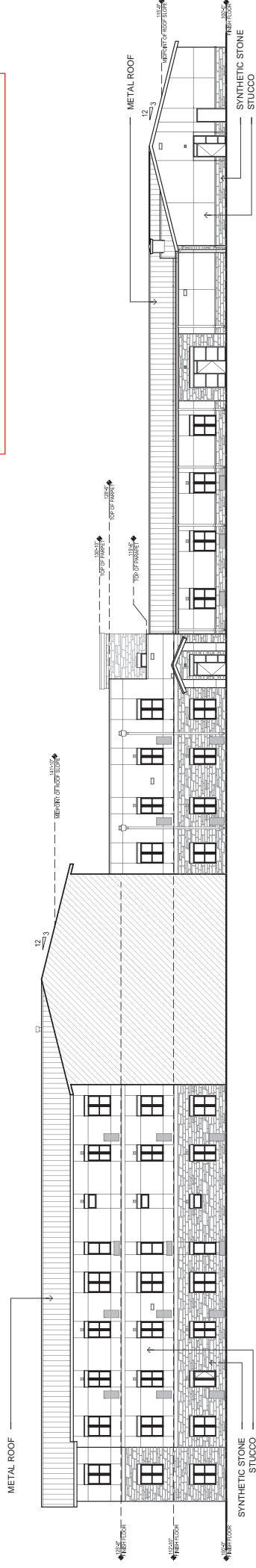
Exhibit C



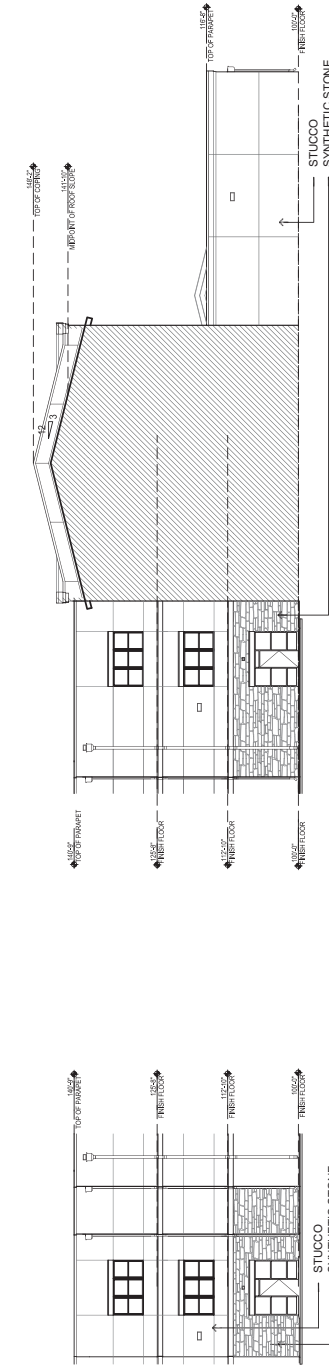
Exhibit D

GENERAL NOTES

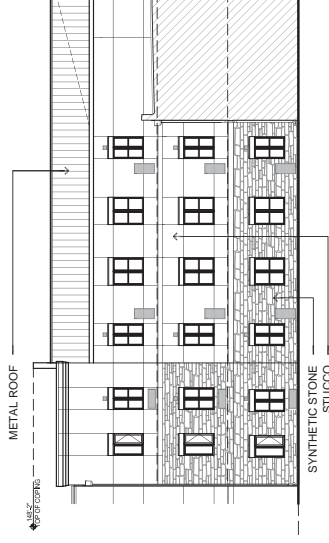
1. AVERAGE FINISH GRADE AT APPROXIMATELY 6' BELOW FINISH FLOOR ELEVATION
2. SYNTHETIC STONE TOTALS APPROXIMATELY 35% COVERAGE



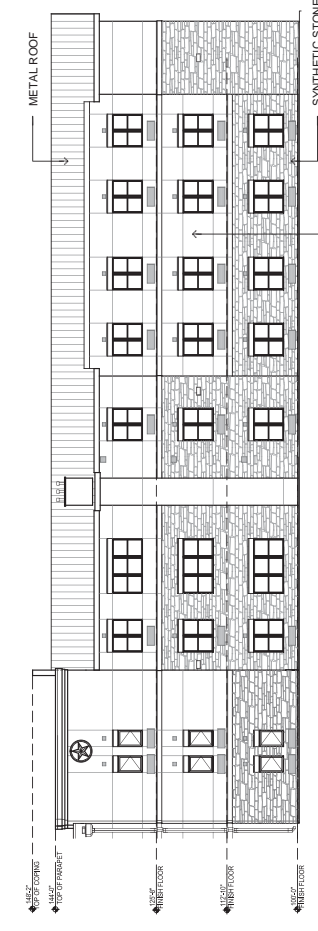
D1
BUILDING C-1 & C-2 - EAST ELEVATION
 1/16" = 1'-0"
 STUCCO COVERAGE: APPROX. 4,025 S.F.
 SYNTHETIC STONE COVERAGE: APPROX. 2,194 S.F.



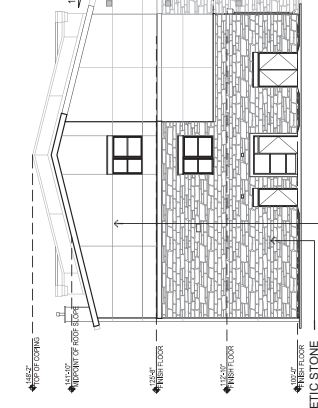
C1
BUILDING B - WEST ELEVATION
 1/16" = 1'-0"
 STUCCO COVERAGE: APPROX. 882 S.F.
 SYNTHETIC STONE COVERAGE: APPROX. 334 S.F.



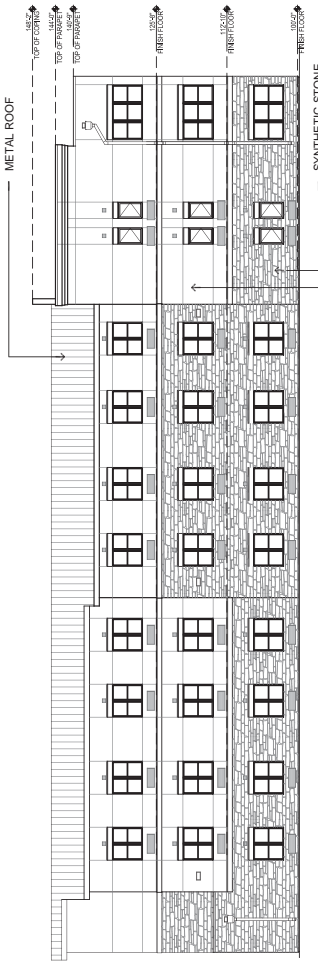
C2
BUILDING B - NORTH ELEVATION
 1/16" = 1'-0"
 STUCCO COVERAGE: APPROX. 1,561 S.F.
 SYNTHETIC STONE COVERAGE: APPROX. 282 S.F.



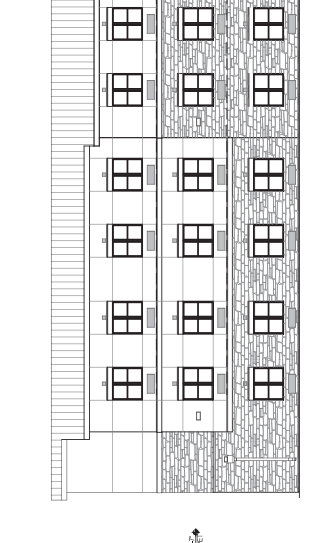
B1
BUILDING B - EAST ELEVATION
 1/16" = 1'-0"
 STUCCO COVERAGE: APPROX. 2,629 S.F.
 SYNTHETIC STONE COVERAGE: APPROX. 2,317 S.F.



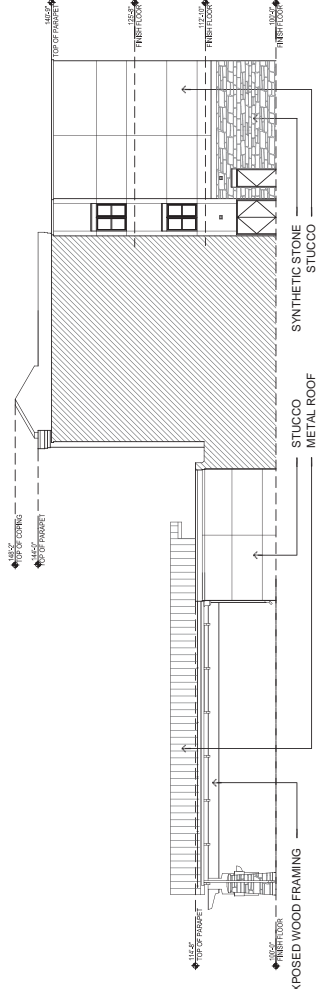
B3
BUILDING B - NORTH ELEVATION
 1/16" = 1'-0"
 STUCCO COVERAGE: APPROX. 1,009 S.F.
 SYNTHETIC STONE COVERAGE: APPROX. 985 S.F.



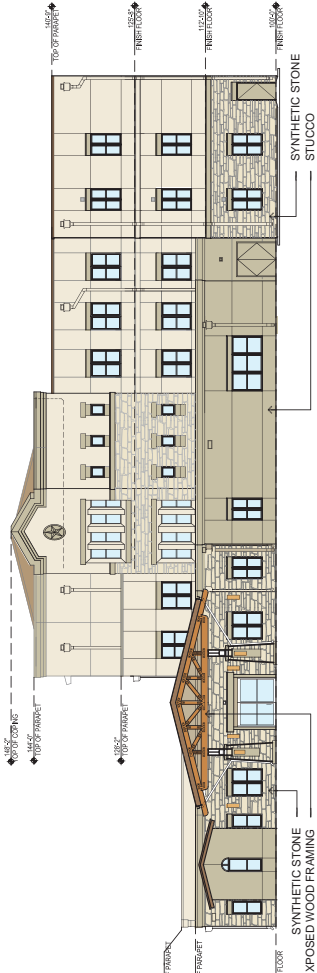
B4
BUILDING B - WEST ELEVATION
 1/16" = 1'-0"
 STUCCO COVERAGE: APPROX. 2,886 S.F.
 SYNTHETIC STONE COVERAGE: APPROX. 2,373 S.F.



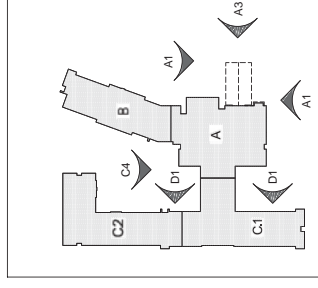
C4
BUILDING C-1 - NORTH ELEVATION
 1/16" = 1'-0"
 STUCCO COVERAGE: APPROX. 1,804 S.F.
 SYNTHETIC STONE COVERAGE: APPROX. 852 S.F.



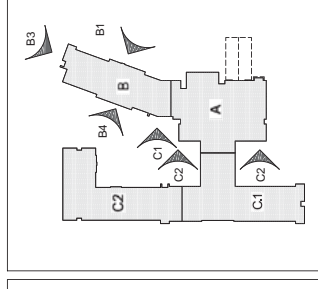
A1
BUILDING A - NORTH ELEVATION
 1/16" = 1'-0"
 STUCCO COVERAGE: APPROX. 1,265 S.F.
 SYNTHETIC STONE COVERAGE: APPROX. 356 S.F.



A3
BUILDING A - EAST ELEVATION
 1/16" = 1'-0"
 STUCCO COVERAGE: APPROX. 3,747 S.F.
 SYNTHETIC STONE COVERAGE: APPROX. 1,272 S.F.



BUILDING LEGEND 1



BUILDING LEGEND 2

REVISIONS
 △
 △
 △
 △

| | |
|--------------|---------------------|
| DRAWN BY | WWM |
| REVIEWED BY | RAW |
| DATE | 05.13.13 |
| PROJECT NO. | 13-0409 |
| DRAWING NAME | BUILDING ELEVATIONS |

SHEET NO. **AE-201**
 2 OF 3

architectural
 interiors
 landscape
 planning
 engineering

Dekker Perich Sabatini

7601 Jefferson NE Suite 100
 Albuquerque, NM 87109
 505 761-9700
 fax 761-4272
 dps@dpsdesign.org

ARCHITECT

TUSCARORA
 AT CRAIG RANCH
 Alma & Stacy Rd.
 McKinney, Texas

ENGINEER
 PROJECT

RECEIVED
 By Kathy Wright at 8:22 am, May 14, 2013

Exhibit E

GENERAL NOTES

1. AVERAGE FINISH GRADE AT APPROXIMATELY 6' BELOW FINISH FLOOR ELEVATION
2. SYNTHETIC STONE TOTALS APPROXIMATELY 35% COVERAGE

architectural
interiors
landscape
planning
engineering

**Dekker
Perich
Sabatini**

7601 Jefferson NE Suite 100
Albuquerque, NM 87109
505 761-3700
fax 761-4222
dps@dpsdesign.com

ARCHITECT

ENGINEER

PROJECT

**TUSCARORA
AT CRAIG RANCH**
Alma & Stacy Rd.
McKinney, Texas

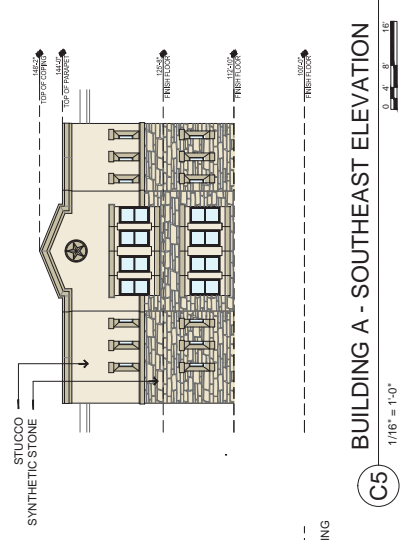
REVISIONS

△
△
△
△

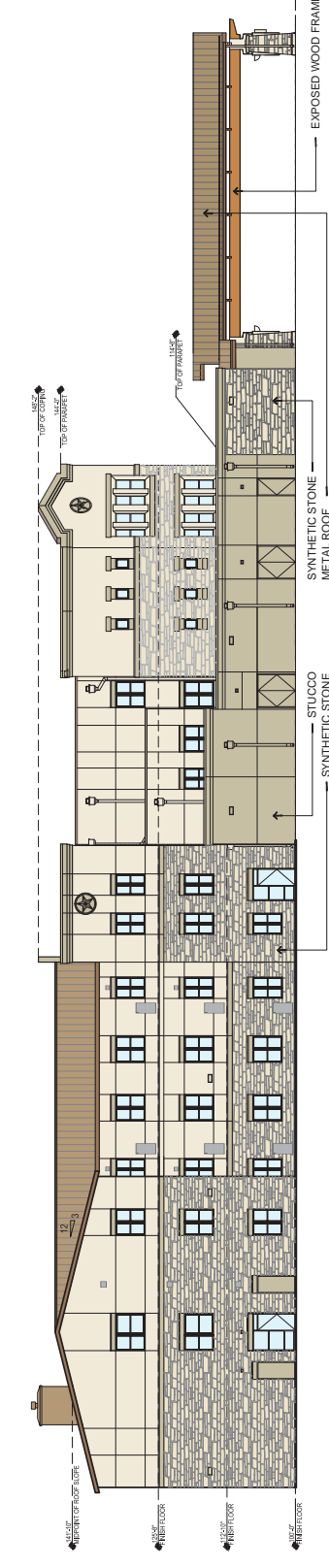
| | |
|-------------|----------|
| DRAWN BY | WMM |
| REVIEWED BY | RAW |
| DATE | 05.13.13 |
| PROJECT NO. | 13-0409 |

DRAWING NAME
**BUILDING
ELEVATIONS**

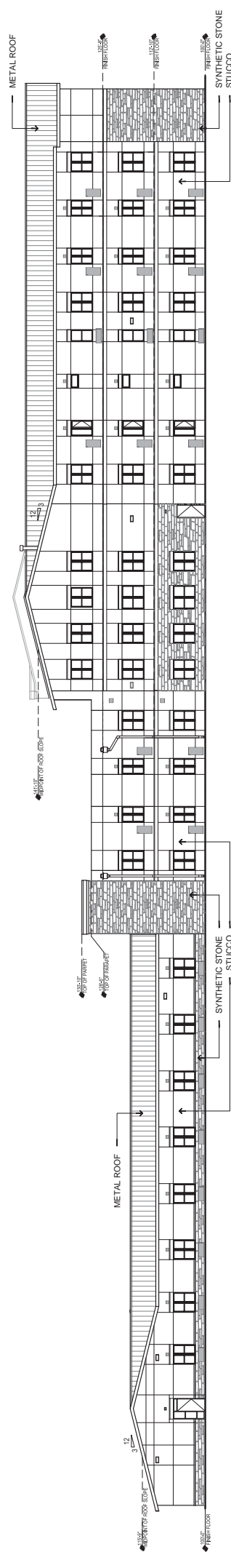
SHEET NO.
AE-202
3 OF 3



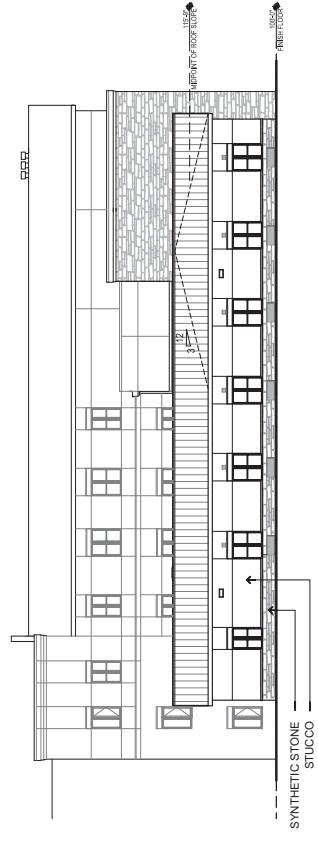
C5 BUILDING A - SOUTHEAST ELEVATION
1/16" = 1'-0"
STUCCO COVERAGE: APPROX. 263 S.F.
SYNTHETIC STONE COVERAGE: APPROX. 158 S.F.



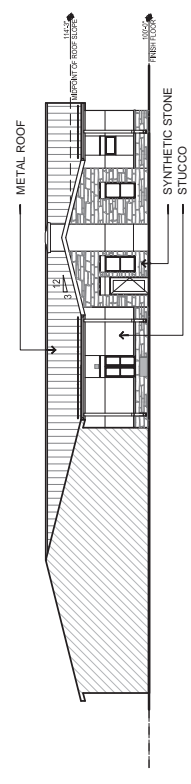
C1 BUILDINGS A & C-1 - SOUTH ELEVATION
1/16" = 1'-0"
STUCCO COVERAGE: APPROX. 4,223 S.F.
SYNTHETIC STONE COVERAGE: APPROX. 2,809 S.F.



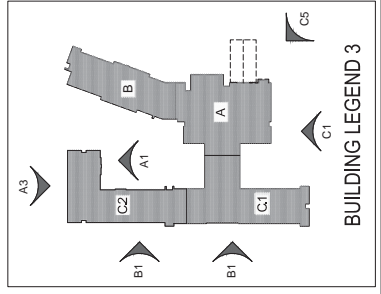
B1 BUILDINGS C-1 & C-2 - WEST ELEVATION
1/16" = 1'-0"
STUCCO COVERAGE: APPROX. 6,414 S.F.
SYNTHETIC STONE COVERAGE: APPROX. 1,814 S.F.



A3 BUILDING C-2 - NORTH ELEVATION
1/16" = 1'-0"
STUCCO COVERAGE: APPROX. 720 S.F.
SYNTHETIC STONE COVERAGE: APPROX. 731 S.F.



A1 BUILDING C-2 - SOUTH ELEVATION
1/16" = 1'-0"
STUCCO COVERAGE: APPROX. 325 S.F.
SYNTHETIC STONE COVERAGE: APPROX. 321 S.F.



RECEIVED
By Kathy Wright at 8:22 am, May 14, 2013