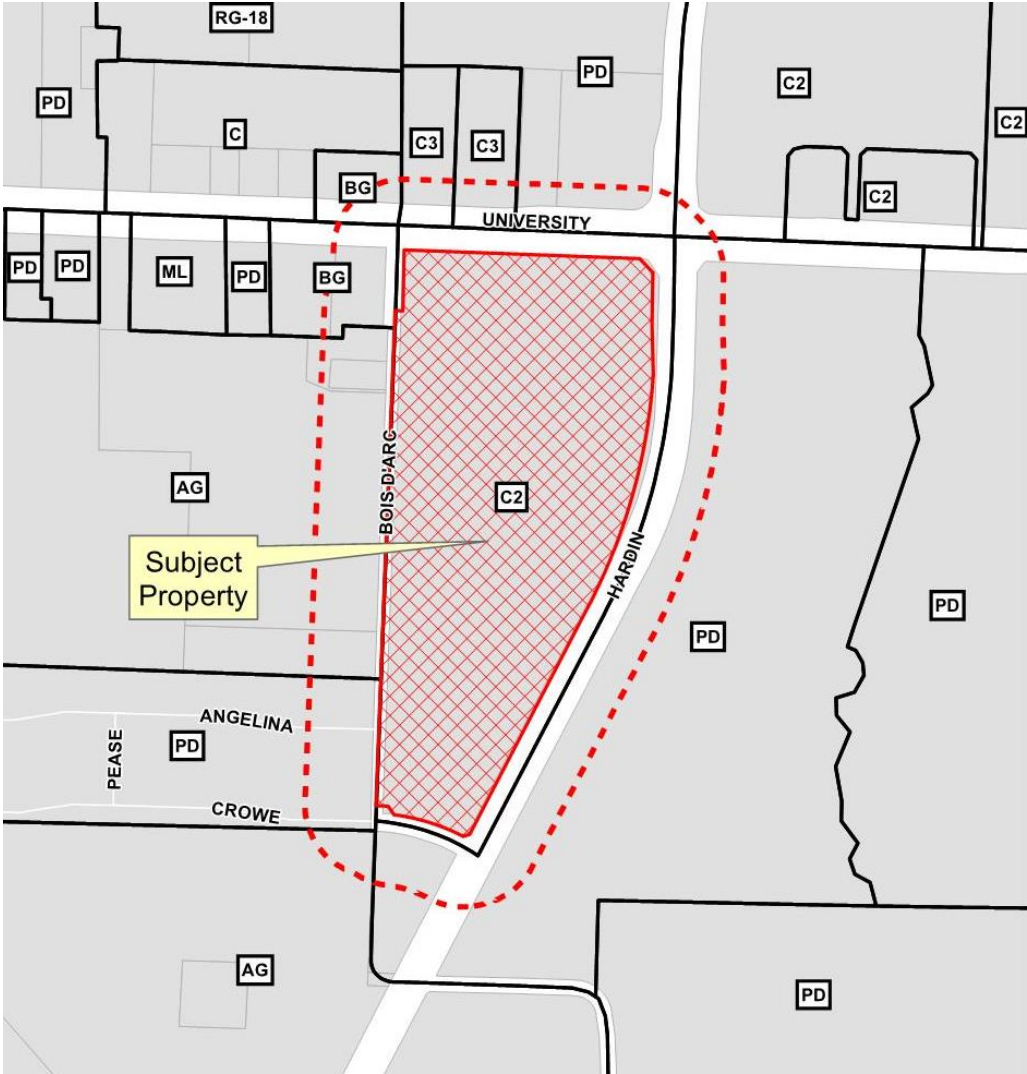


# Cinemark at 380 Commons Site Plan

17-219SP



# Location Map



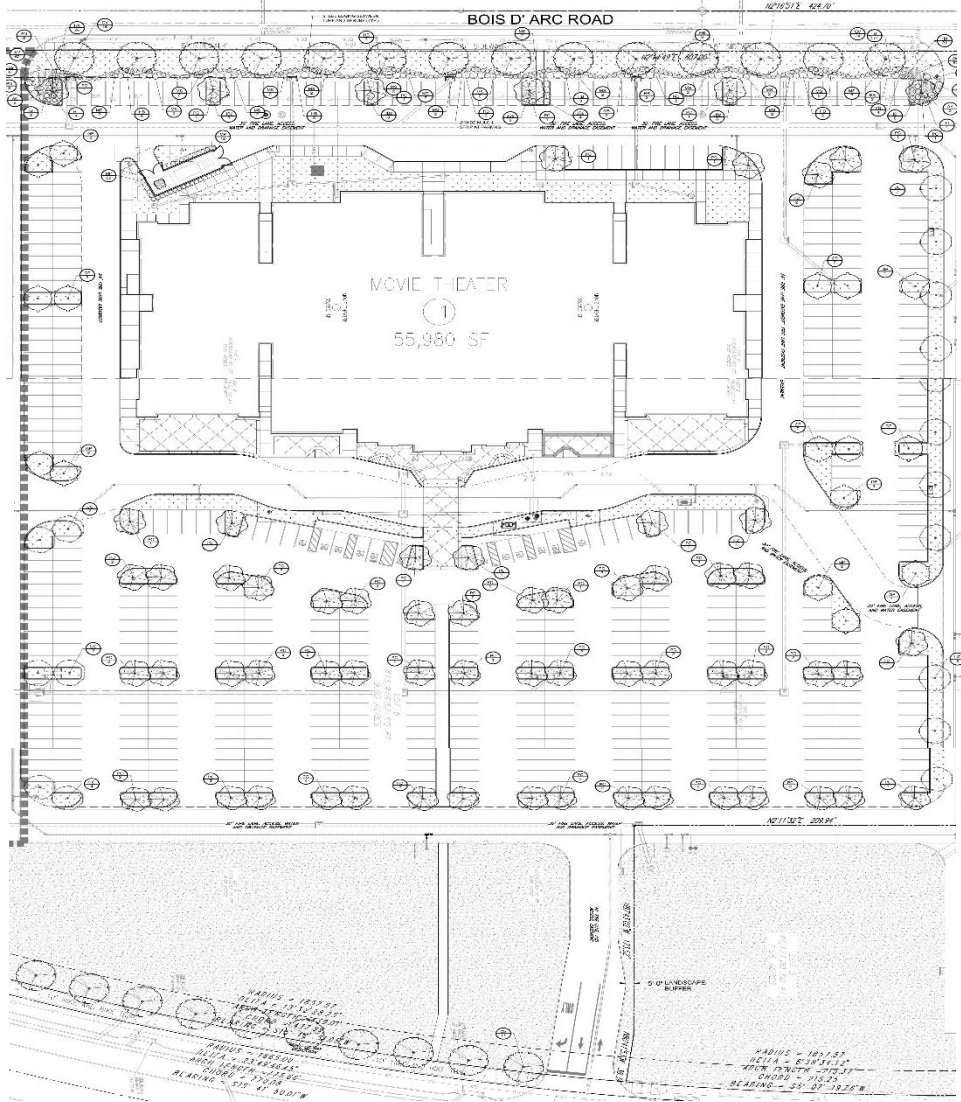
# Aerial Exhibit



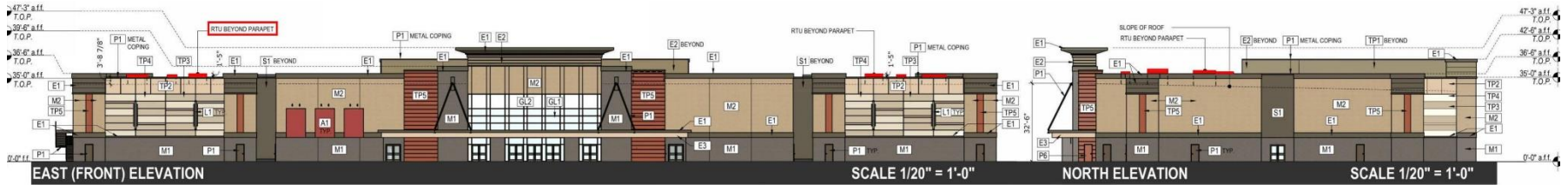




# Proposed Landscape Plan



# Approved Elevations with HVAC

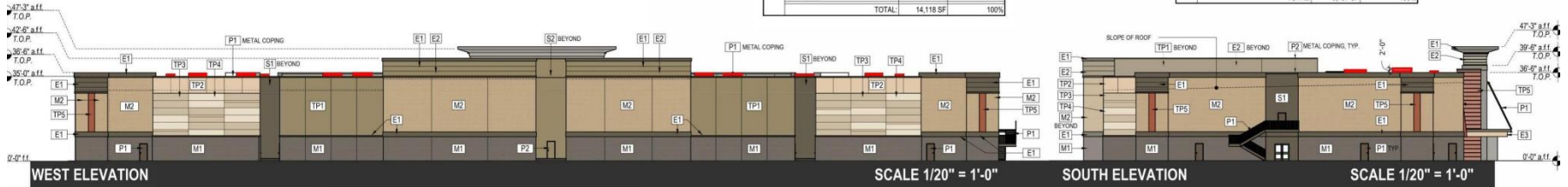


**EAST FACADE MATERIAL AREAS & PERCENTAGES:**

	AREA (SF)	PERCENTAGE
BRICK VENEER	7,269 SF	52%
EIFS	1,365 SF	14%
STUCCO	480 SF	3%
CURTAIN WALL	929 SF	7%
ARCHITECTURALLY FINISHED TILT WALL	3,455 SF	24%
<b>TOTAL</b>	<b>14,118 SF</b>	<b>100%</b>

**NORTH FACADE MATERIAL AREAS & PERCENTAGES:**

	AREA (SF)	PERCENTAGE
BRICK VENEER	4,427 SF	66%
EIFS	844 SF	12%
STUCCO	410	6%
ARCHITECTURALLY FINISHED TILT WALL	1,066 SF	16%
<b>TOTAL</b>	<b>6,737 SF</b>	<b>100%</b>



**WEST FACADE MATERIAL AREAS & PERCENTAGES:**

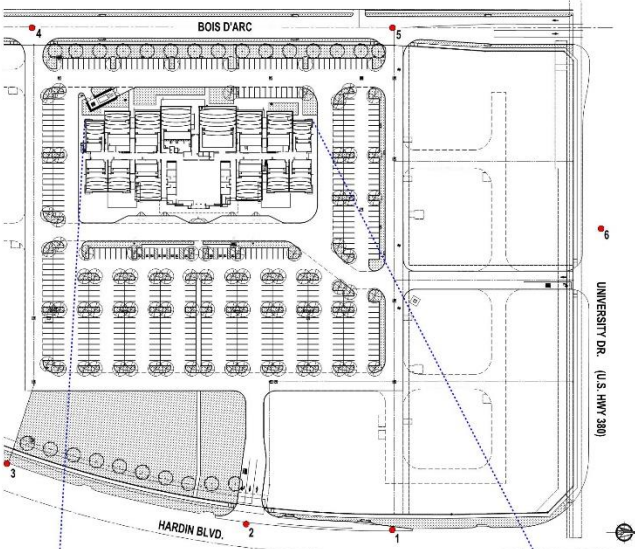
	AREA (SF)	PERCENTAGE
BRICK VENEER	7,452 SF	52%
EIFS	1,634 SF	11%
STUCCO	1,065 SF	8%
ARCHITECTURALLY FINISHED TILT WALL	4,276 SF	29%
<b>TOTAL</b>	<b>14,457 SF</b>	<b>100%</b>

**SOUTH FACADE MATERIAL AREAS & PERCENTAGES:**

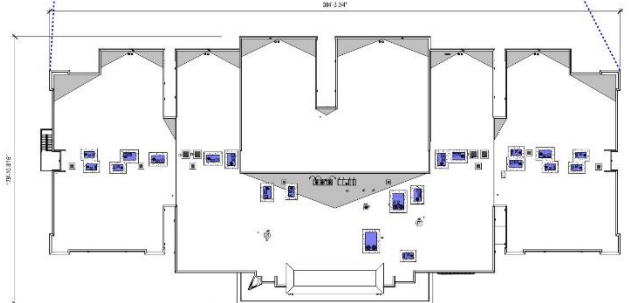
	AREA (SF)	PERCENTAGE
BRICK VENEER	4,427 SF	66%
EIFS	844 SF	12%
STUCCO	410	6%
ARCHITECTURALLY FINISHED TILT WALL	1,066 SF	16%
<b>TOTAL</b>	<b>6,737 SF</b>	<b>100%</b>



# Sight Line Exhibit



SIGHT LINE DATUM POINTS



LOCATION OF ROOFTOP UNITS



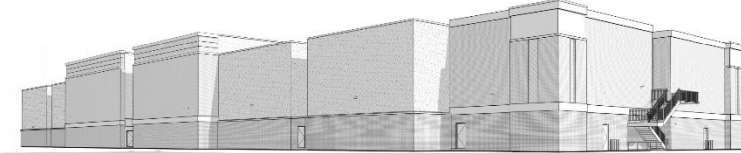
1 - VIEW FROM PUBLIC RIGHT-OF-WAY - NORTHEAST



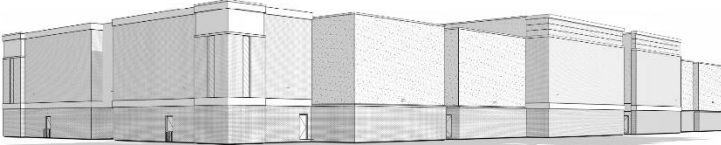
2 - VIEW FROM PUBLIC RIGHT-OF-WAY - HARDIN BLVD. SITE ENTRANCE



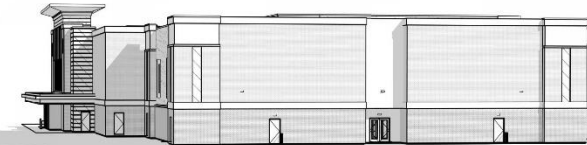
3 - VIEW FROM PUBLIC RIGHT-OF-WAY - SOUTHEAST



4 - VIEW FROM PUBLIC RIGHT-OF-WAY - SOUTHWEST



5 - VIEW FROM PUBLIC RIGHT-OF-WAY - NORTHWEST



6 - VIEW FROM UNIVERSITY DR.

\*ALL VIEWS TAKEN AT 6'-0" FROM GRADE



