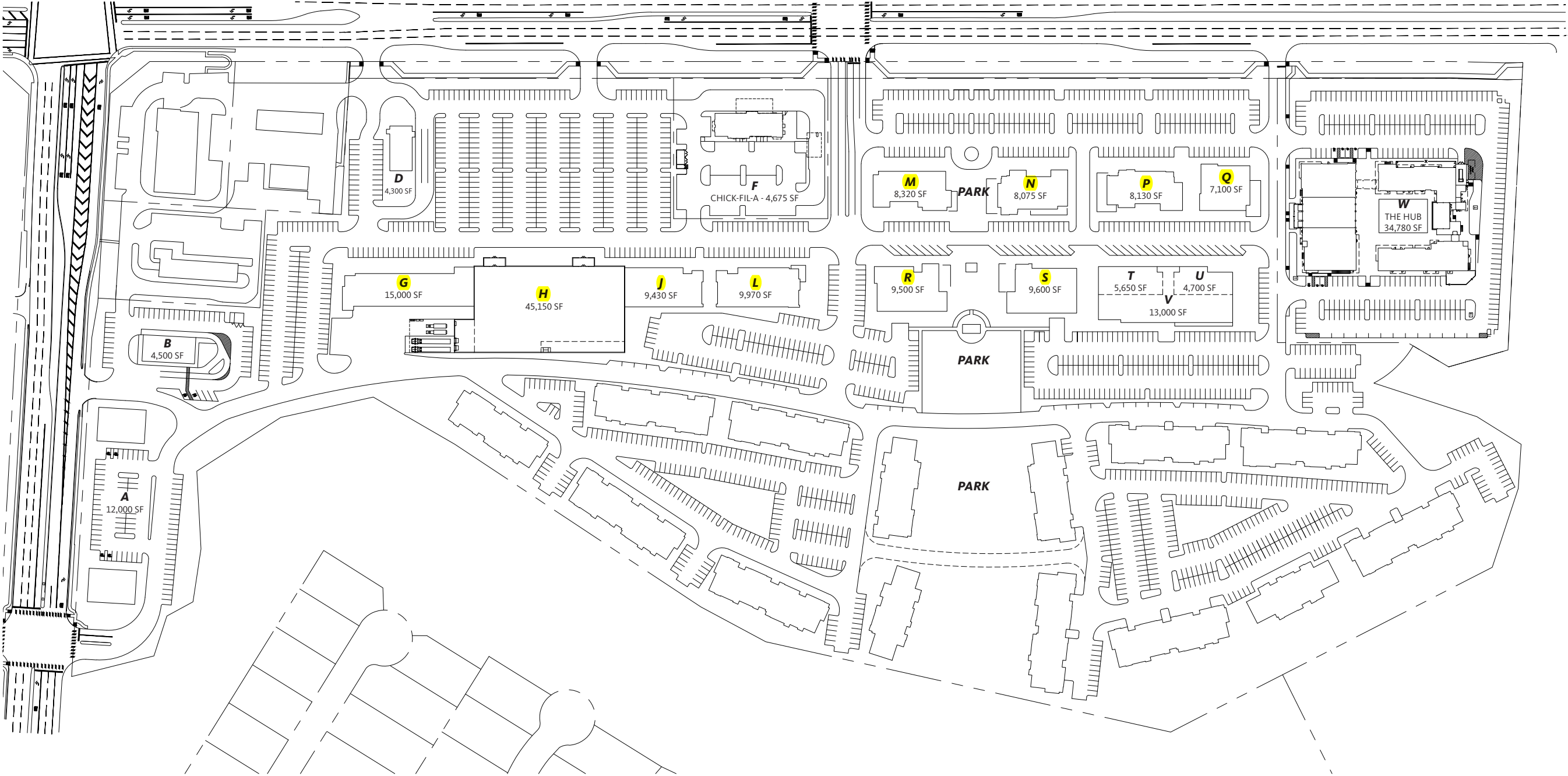


# WESTGROVE RETAIL MCKINNEY

## EXTERIOR FINISHING MATERIALS

WESTGROVE RETAIL SITE PLAN



# PALETTE OF WEATHERED MATERIALS (SHED)

CLADDING ON METAL STUD CONSTRUCTION



MULTI-TONE  
BRICK



PLASTER LAYERING  
ON BRICK



WHITE PAINTED  
BOARD & BATTEN



CORRUGATED  
METAL



EARTH TONE  
WOOD



SPLIT FACE  
CONCRETE BLOCK



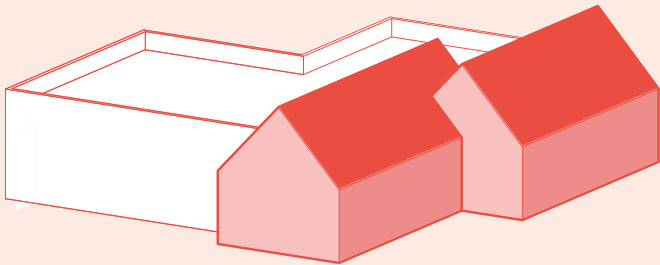
PAINTED  
WOOD

POTENTIAL ALTERNATIVE MATERIALS  
(NOT LIMITED TO):

- FIBER CEMENT BOARD
- WOOD PANEL
- STONE & BRICK VENEER
- METAL PANEL

Permitted architecturally finished metal panels does not include corrugated metal.

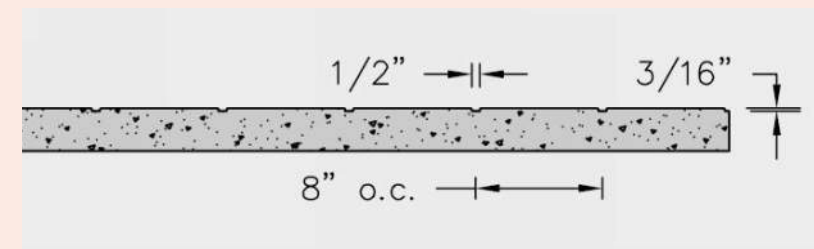
Permitted lap siding may include wood or cementitious fiber lap siding, sheet siding is prohibited.



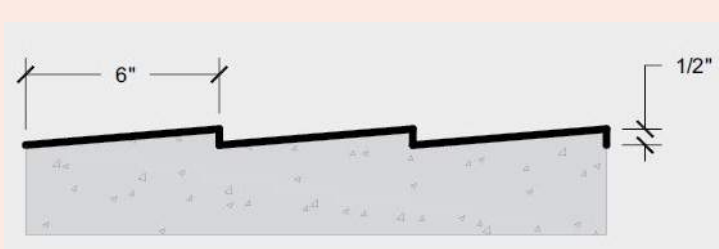
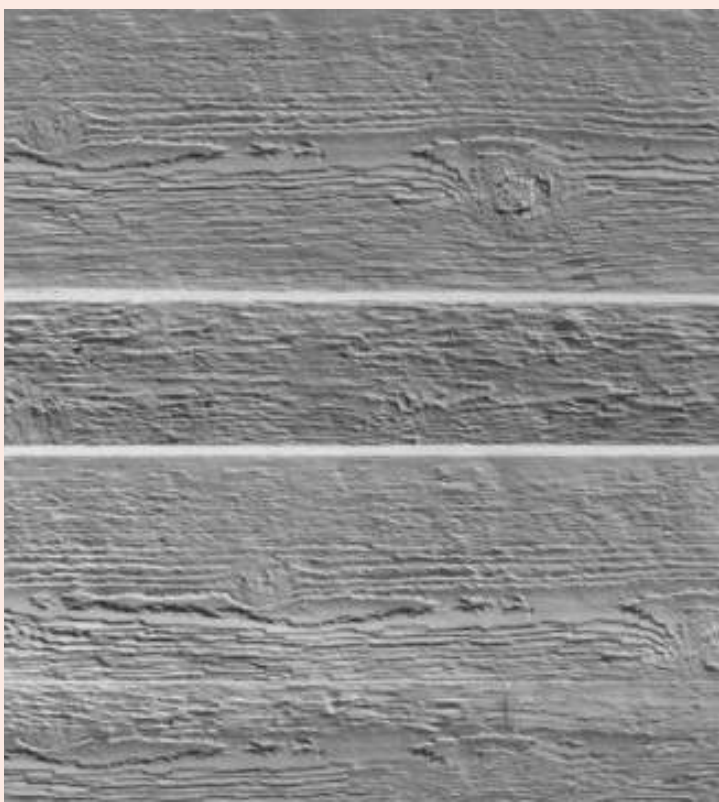


# PALETTE OF WEATHERED MATERIALS (BOX)

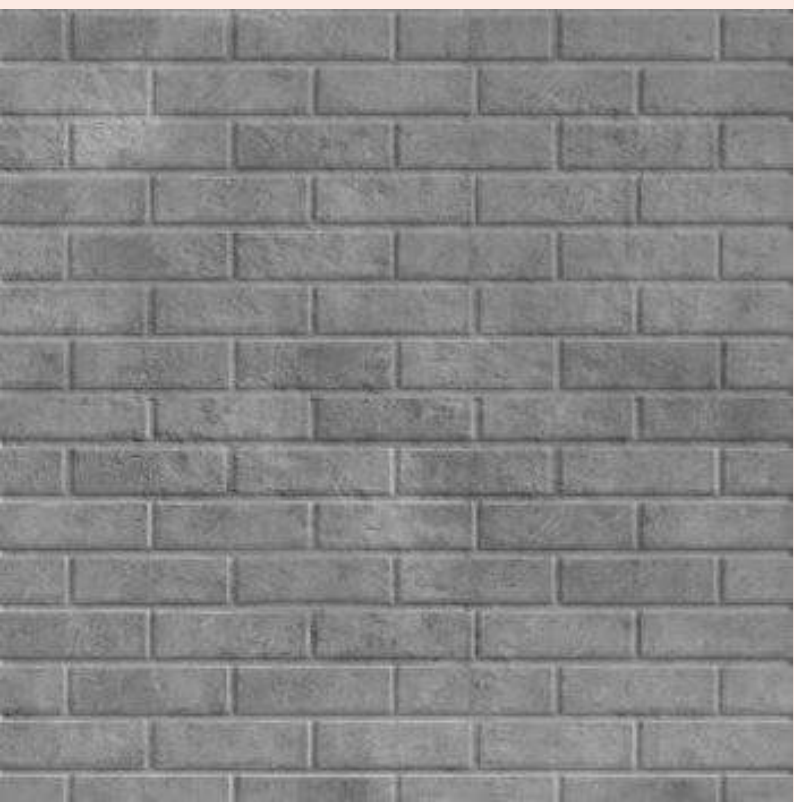
PATTERNED FORMLINER ON TILT-WALL CONCRETE



**VERTICAL WOOD BOARD  
CONCRETE FORMLINER PATTERN**

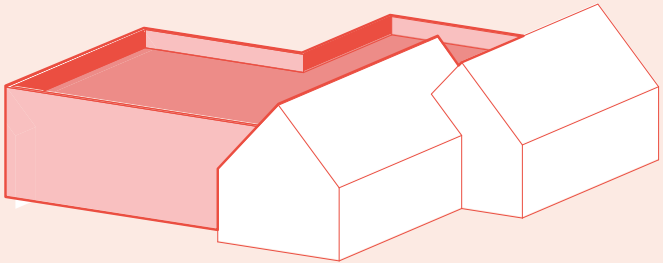


**SHIPLAP WOOD  
CONCRETE FORMLINER PATTERN**



**BRICK RUNNING BOND  
CONCRETE FORMLINER PATTERN**

All elevations for buildings that are three stories or smaller in height shall be finished with at least 50% masonry finishing materials.





# ADD POPS OF COLOR WITH PAINTED WALL GRAPHICS



No more than 20% of any building elevation may be finished with bright, pure tone primary or secondary colors.

These colors shall be limited to use on accent features including, but not limited to, window and door frames, moldings, cornices, canopies, and awnings.

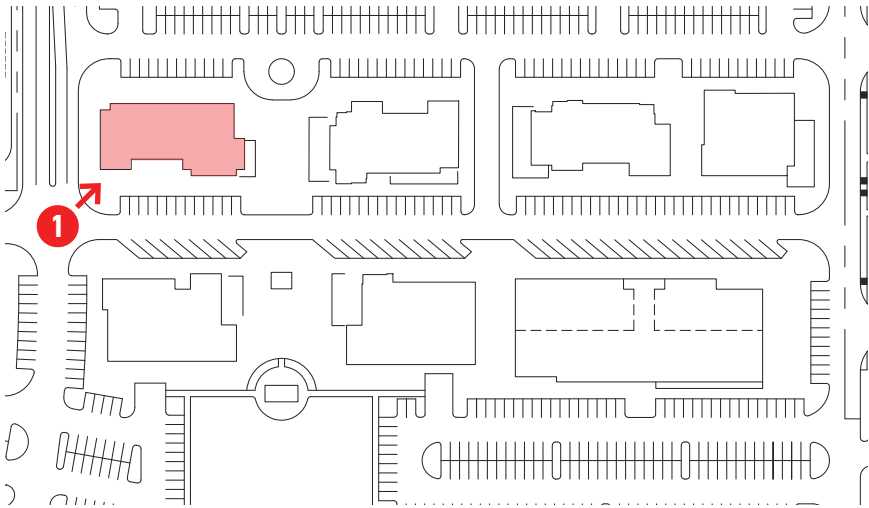
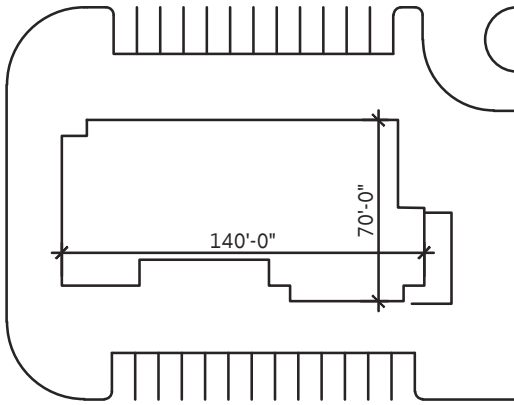
(Independent of signage requirements)



BUILDING M OVERALL MASSING (8,320 GFA)



MASSING DIAGRAM 1





BUILDING M EXTERIOR ELEVATIONS

Detail needed for required two offsets, at least 18in in depth, on elevations 50ft or greater in length.

Information not yet provided for the protected primary entry feature. Coverings shall be no smaller than three feet in depth.

Information not yet provided from the additional feature options in Section 146-139(f)(9)(f)(6).



ELEVATION 1



ELEVATION 2



ELEVATION 3



ELEVATION 4

1: NORTH FACADE MATERIAL PERCENTAGES

MASONRY	82%
STUCCO	0%
WOOD	18%
TILT WALL	0%
METAL PANEL	0%

2: EAST FACADE MATERIAL PERCENTAGES

MASONRY	100%
STUCCO	0%
WOOD	0%
TILT WALL	0%
METAL PANEL	0%

3: SOUTH FACADE MATERIAL PERCENTAGES

MASONRY	68%
STUCCO	0%
WOOD	32%
TILT WALL	0%
METAL PANEL	0%

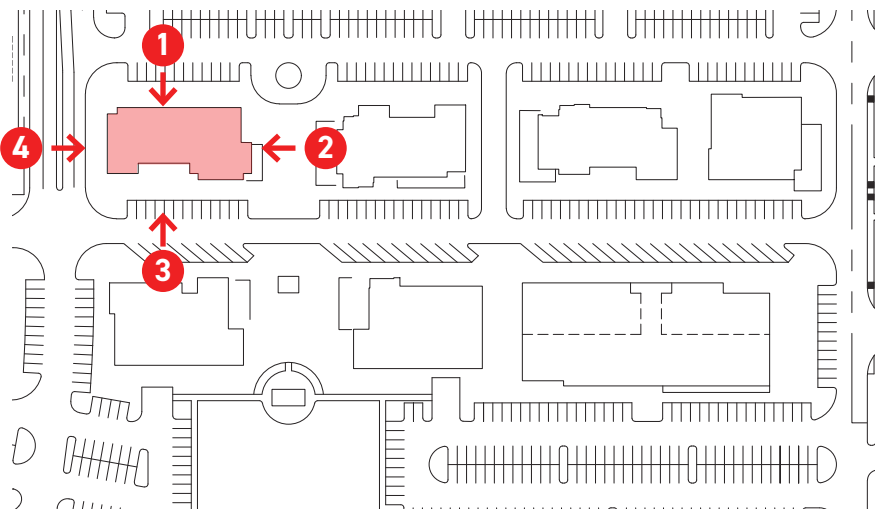
4: WEST FACADE MATERIAL PERCENTAGES

MASONRY	44%
STUCCO	0%
WOOD	56%
TILT WALL	0%
METAL PANEL	0%

50% masonry finishing material required on all elevations.

Architectural wood accents are not to exceed more than 20% of any elevation.

No more than 20% of any building elevation may be finished with bright, pure tone primary or secondary colors.

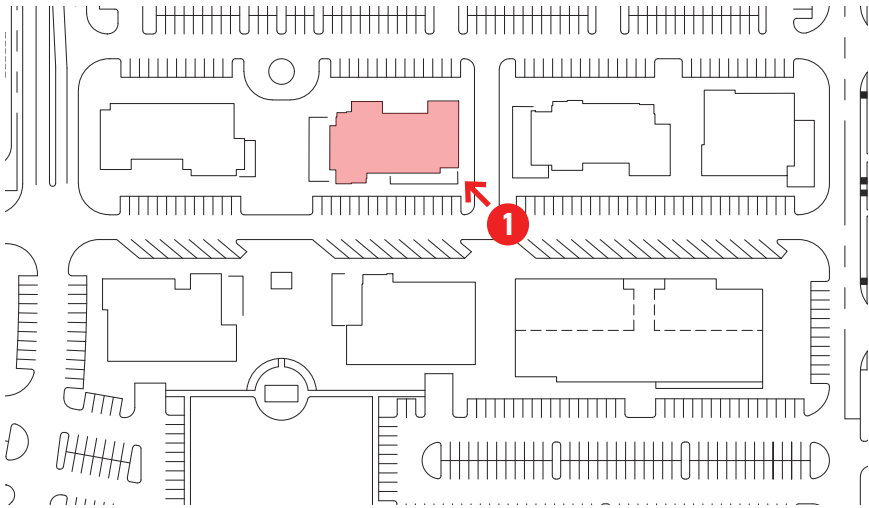
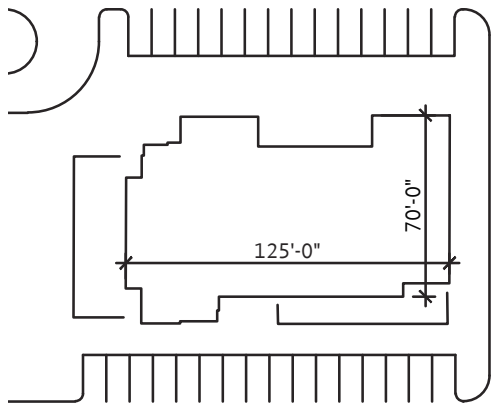




BUILDING N OVERALL MASSING (8,075 GFA)



MASSING DIAGRAM 1



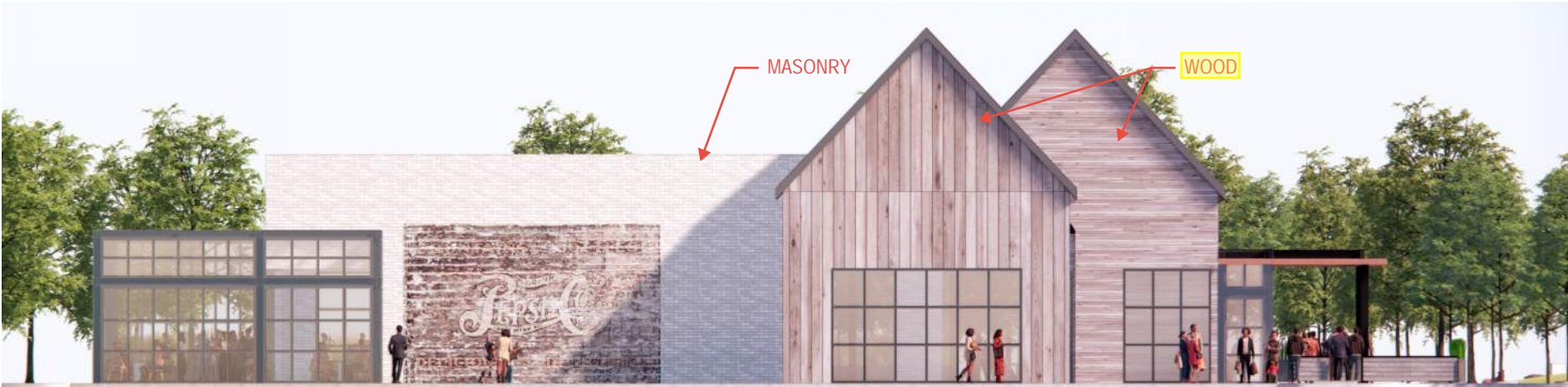


BUILDING N EXTERIOR ELEVATIONS

Detail needed for required two offsets, at least 18in in depth, on elevations 50ft or greater in length.

Information not yet provided for the protected primary entry feature. Coverings shall be no smaller than three feet in depth.

Information not yet provided from the additional feature options in Section 146-139(f)(9)(f)(6).



ELEVATION 1



ELEVATION 2



ELEVATION 3



ELEVATION 4

1: NORTH FACADE MATERIAL PERCENTAGES

MASONRY	53%
STUCCO	0%
WOOD	47%
TILT WALL	0%
METAL PANEL	0%

2: EAST FACADE MATERIAL PERCENTAGES

MASONRY	81%
STUCCO	0%
WOOD	19%
TILT WALL	0%
METAL PANEL	0%

3: SOUTH FACADE MATERIAL PERCENTAGES

MASONRY	56%
STUCCO	0%
WOOD	44%
TILT WALL	0%
METAL PANEL	0%

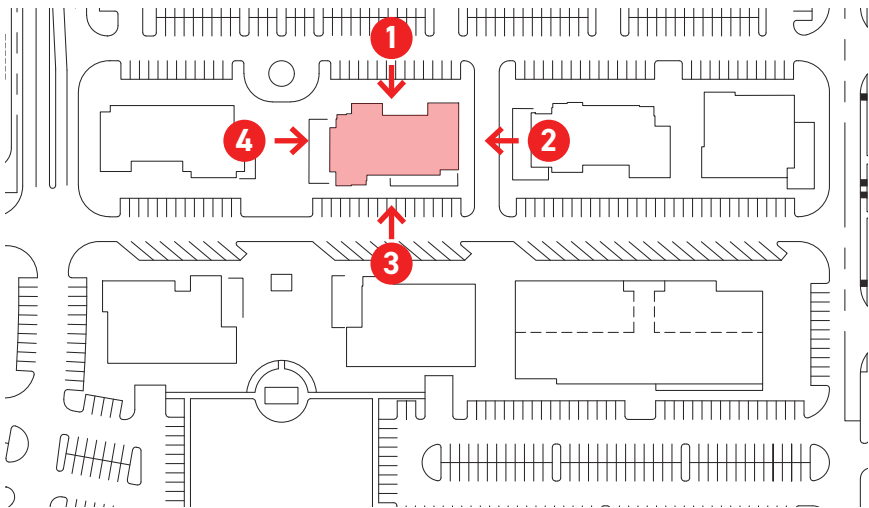
4: WEST FACADE MATERIAL PERCENTAGES

MASONRY	0%
STUCCO	0%
WOOD	100%
TILT WALL	0%
METAL PANEL	0%

50% masonry finishing material required on all elevations.

Architectural wood accents are not to exceed more than 20% of any elevation.

No more than 20% of any building elevation may be finished with bright, pure tone primary or secondary colors.

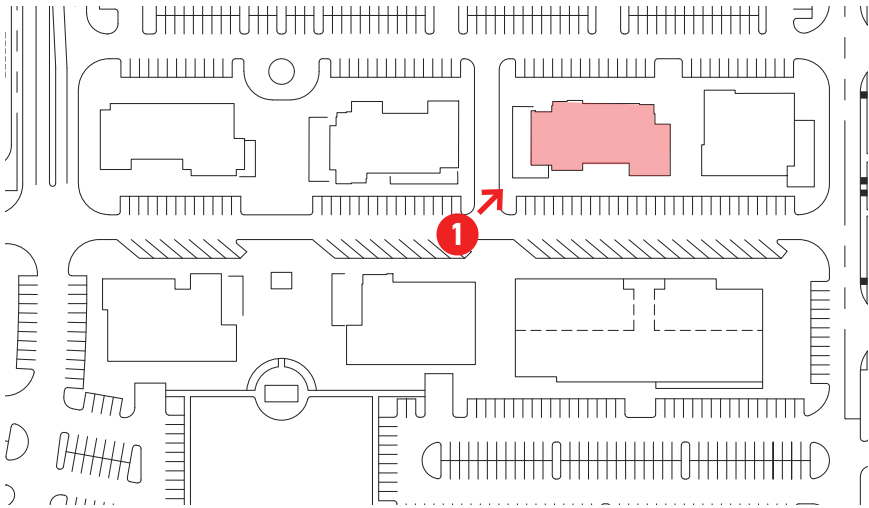
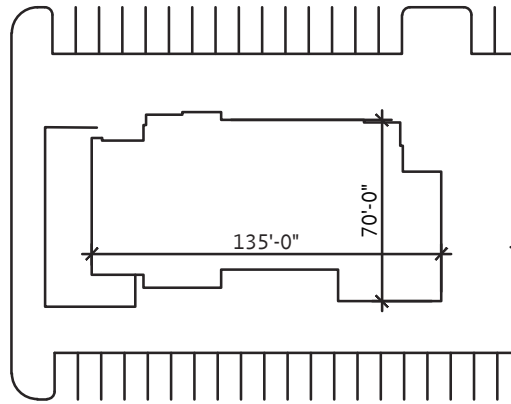




**BUILDING P** OVERALL MASSING (8,130 GFA)



MASSING DIAGRAM 1





BUILDING P EXTERIOR ELEVATIONS

Detail needed for required two offsets, at least 18in in depth, on elevations 50ft or greater in length.

Information not yet provided for the protected primary entry feature. Coverings shall be no smaller than three feet in depth.

Information not yet provided from the additional feature options in Section 146-139(f)(9)(f)(6).



ELEVATION 1



ELEVATION 2



ELEVATION 3



ELEVATION 4

1: NORTH FACADE MATERIAL PERCENTAGES

MASONRY	55%
STUCCO	0%
WOOD	0%
TILT WALL	24%
METAL PANEL	21%

2: EAST FACADE MATERIAL PERCENTAGES

MASONRY	90%
STUCCO	0%
WOOD	0%
TILT WALL	10%
METAL PANEL	0%

3: SOUTH FACADE MATERIAL PERCENTAGES

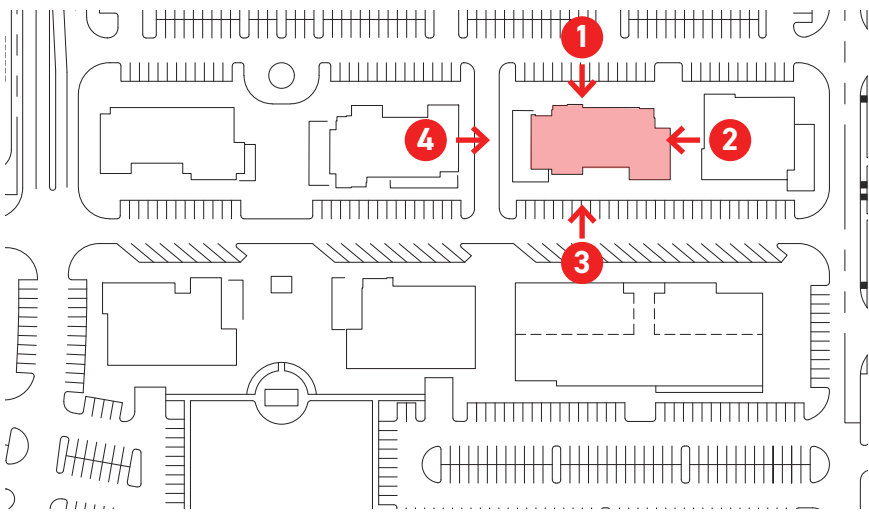
MASONRY	50%
STUCCO	0%
WOOD	0%
TILT WALL	21%
METAL PANEL	29%

4: WEST FACADE MATERIAL PERCENTAGES

MASONRY	1%
STUCCO	0%
WOOD	20%
TILT WALL	28%
METAL PANEL	51%

50% masonry finishing material required on all elevations.

Corrugated metal is not a permitted metal panel material.

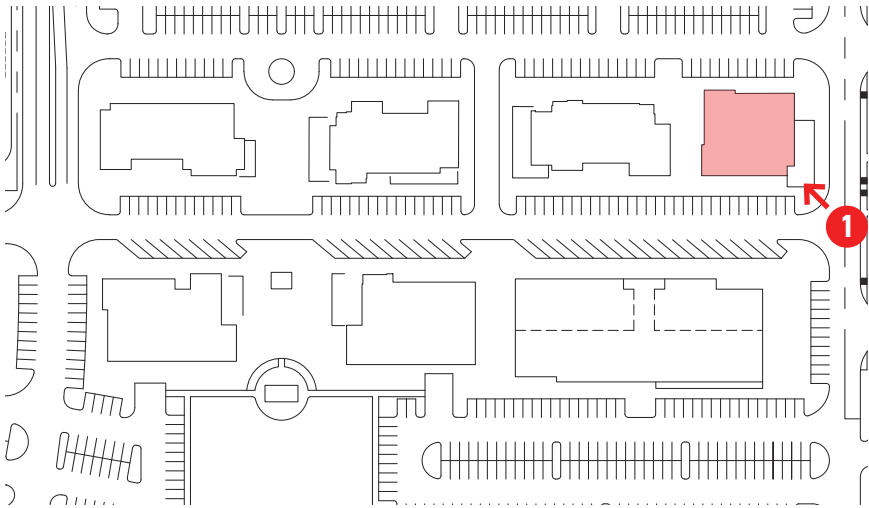
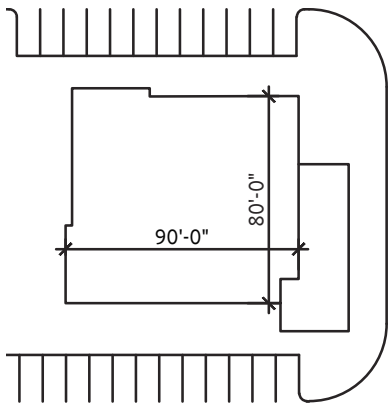




BUILDING Q OVERALL MASSING (7,100 GFA)



MASSING DIAGRAM 1



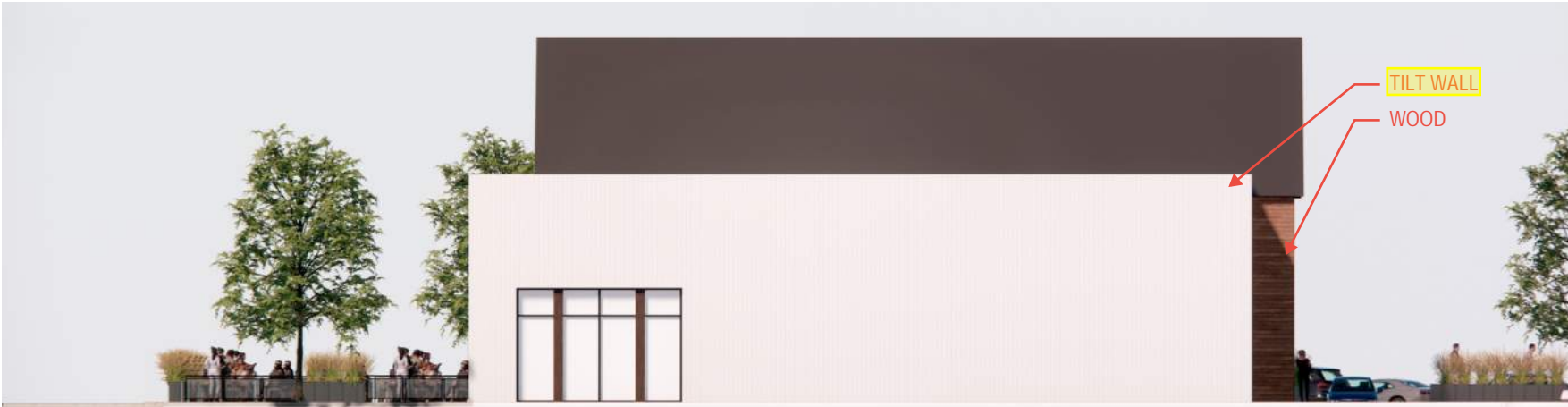


BUILDING Q EXTERIOR ELEVATIONS

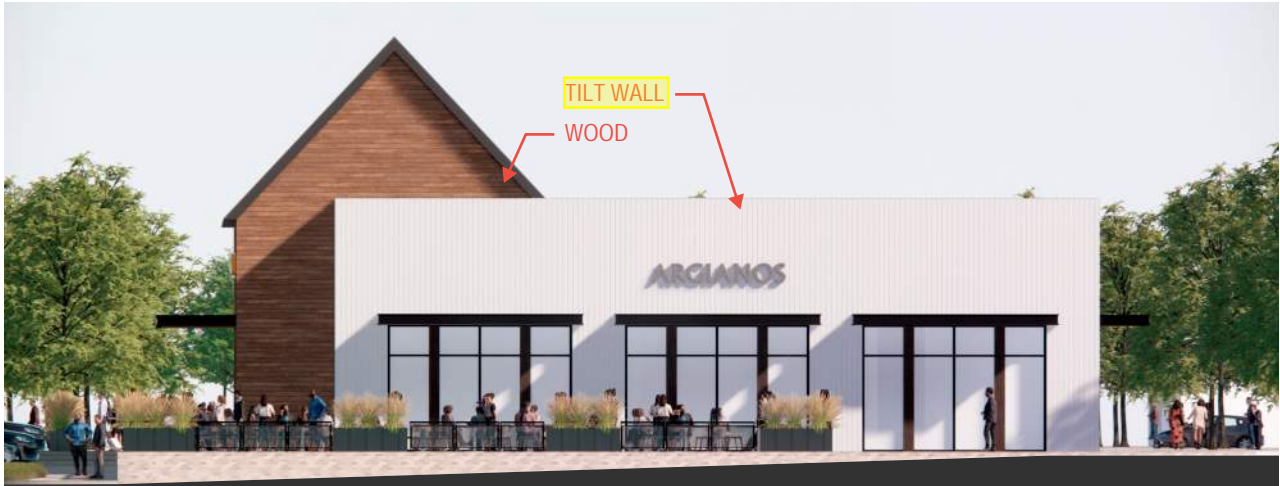
Detail needed for required two offsets, at least 18in in depth, on elevations 50ft or greater in length.

Information not yet provided for the protected primary entry feature. Coverings shall be no smaller than three feet in depth.

Information not yet provided from the additional feature options in Section 146-139(f)(9)(f)(6).



ELEVATION 1



ELEVATION 2



ELEVATION 3



ELEVATION 4

1: NORTH FACADE MATERIAL PERCENTAGES

MASONRY	0%
STUCCO	0%
WOOD	5%
TILT WALL	95%
METAL PANEL	0%

2: EAST FACADE MATERIAL PERCENTAGES

MASONRY	0%
STUCCO	0%
WOOD	18%
TILT WALL	72%
METAL PANEL	0%

3: SOUTH FACADE MATERIAL PERCENTAGES

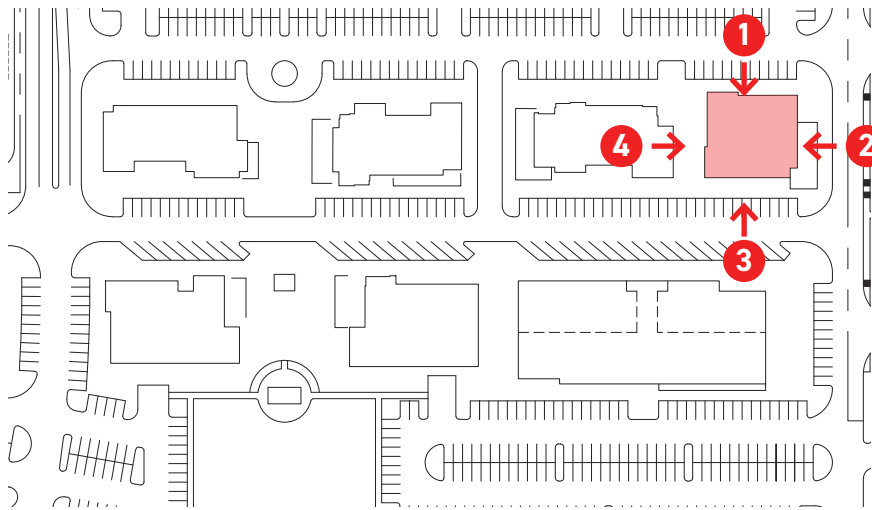
MASONRY	0%
STUCCO	0%
WOOD	87%
TILT WALL	13%
METAL PANEL	0%

4: WEST FACADE MATERIAL PERCENTAGES

MASONRY	0%
STUCCO	0%
WOOD	46%
TILT WALL	54%
METAL PANEL	0%

50% masonry finishing material required on all elevations.

Architectural wood accents are not to exceed more than 20% of any elevation.

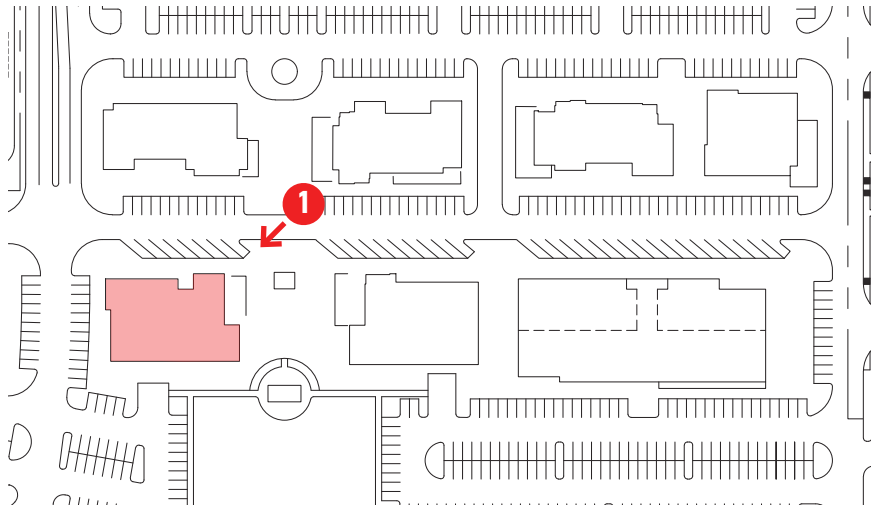
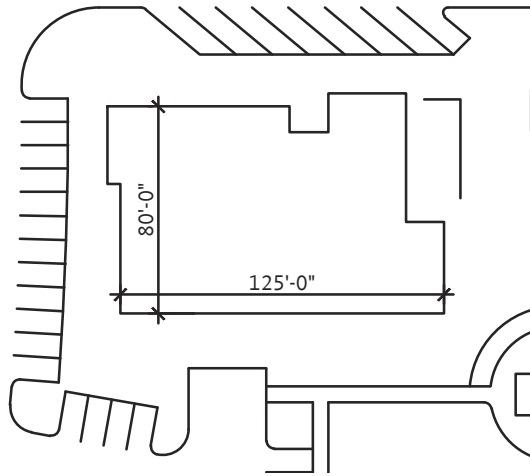




**BUILDING R** OVERALL MASSING (9,500 GFA)



MASSING DIAGRAM 1





BUILDING R EXTERIOR ELEVATIONS

Detail needed for required two offsets, at least 18in in depth, on elevations 50ft or greater in length.

Information not yet provided for the protected primary entry feature. Coverings shall be no smaller than three feet in depth.

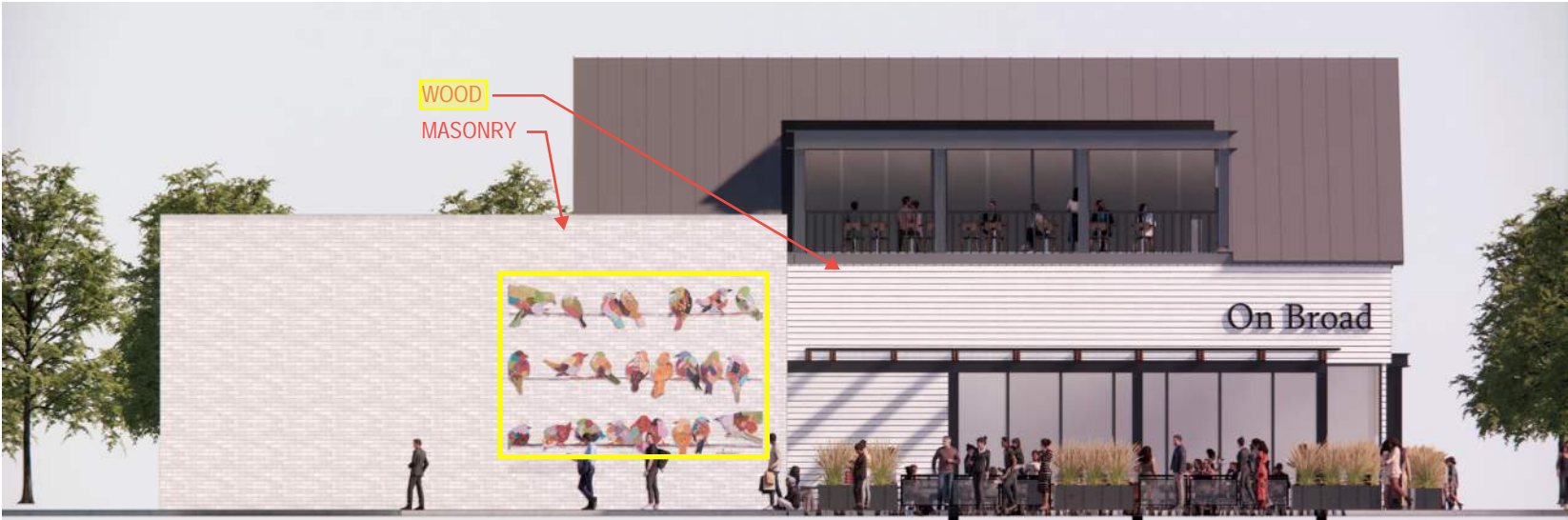
Information not yet provided from the additional feature options in Section 146-139(f)(9)(f)(6).



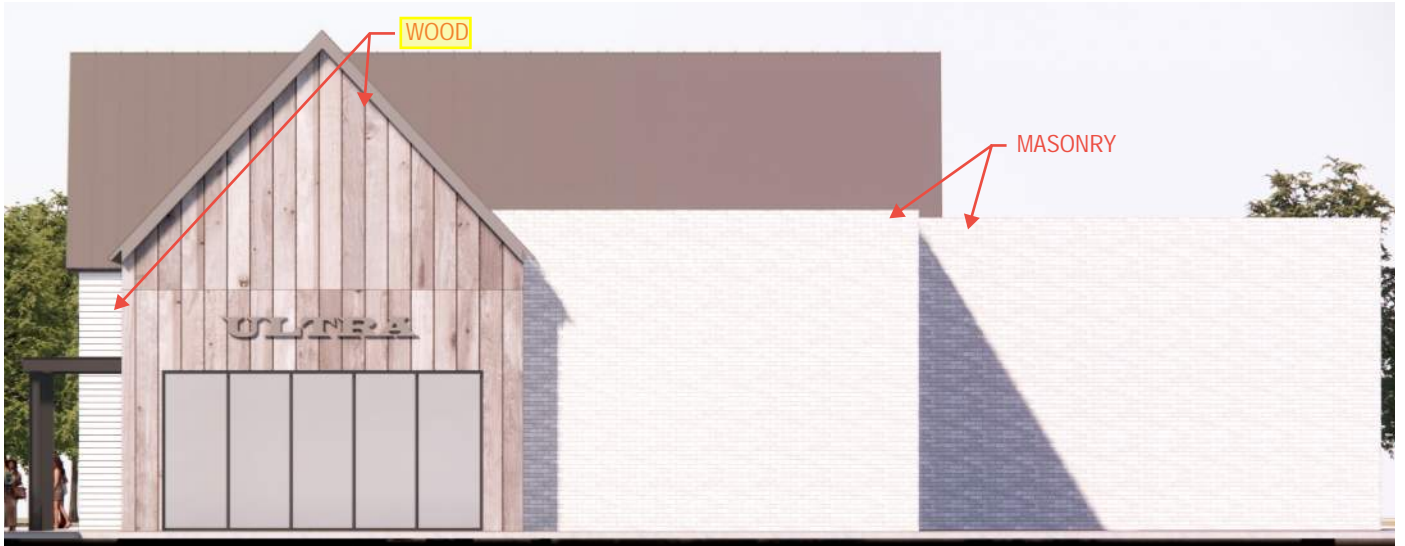
ELEVATION 1



ELEVATION 2



ELEVATION 3



ELEVATION 4

1: NORTH FACADE MATERIAL PERCENTAGES

MASONRY	32%
STUCCO	0%
WOOD	68%
TILT WALL	0%
METAL PANEL	0%

2: EAST FACADE MATERIAL PERCENTAGES

MASONRY	97%
STUCCO	0%
WOOD	3%
TILT WALL	0%
METAL PANEL	0%

3: SOUTH FACADE MATERIAL PERCENTAGES

MASONRY	69%
STUCCO	0%
WOOD	31%
TILT WALL	0%
METAL PANEL	0%

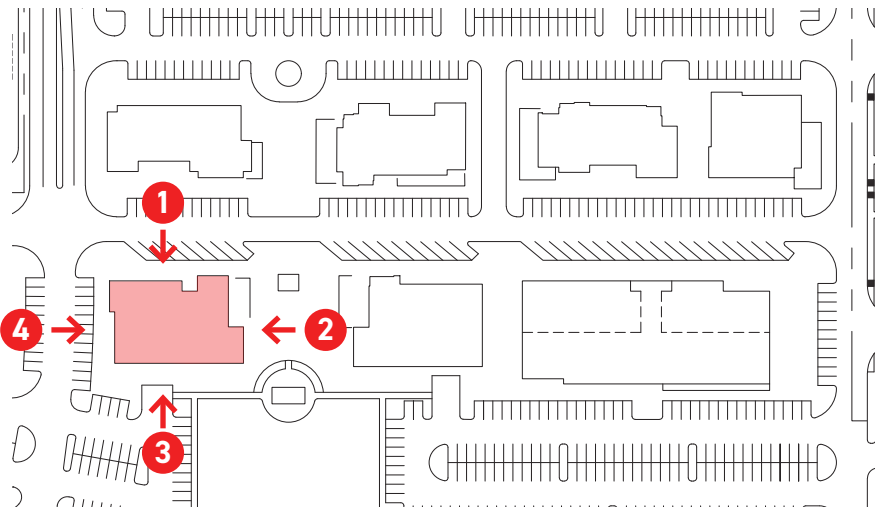
4: WEST FACADE MATERIAL PERCENTAGES

MASONRY	71%
STUCCO	0%
WOOD	29%
TILT WALL	0%
METAL PANEL	0%

50% masonry finishing material required on all elevations.

Architectural wood accents are not to exceed more than 20% of any elevation.

No more than 20% of any building elevation may be finished with bright, pure tone primary or secondary colors.

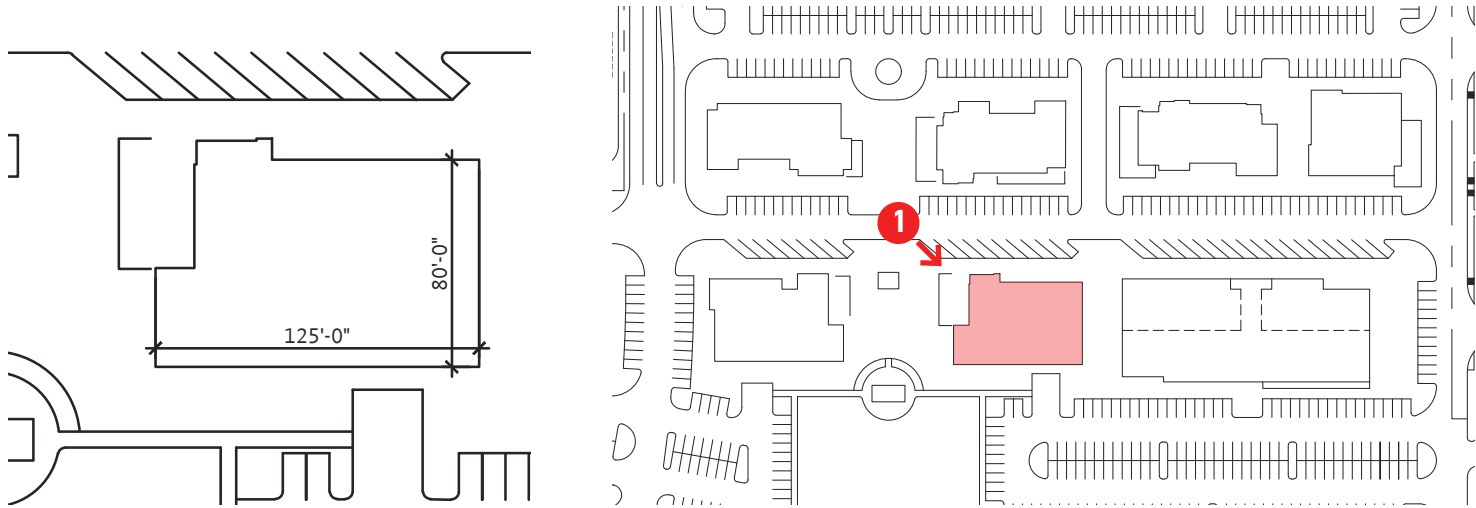




**BUILDING S** OVERALL MASSING (9,600 GFA)



MASSING DIAGRAM 1





BUILDING S EXTERIOR ELEVATIONS

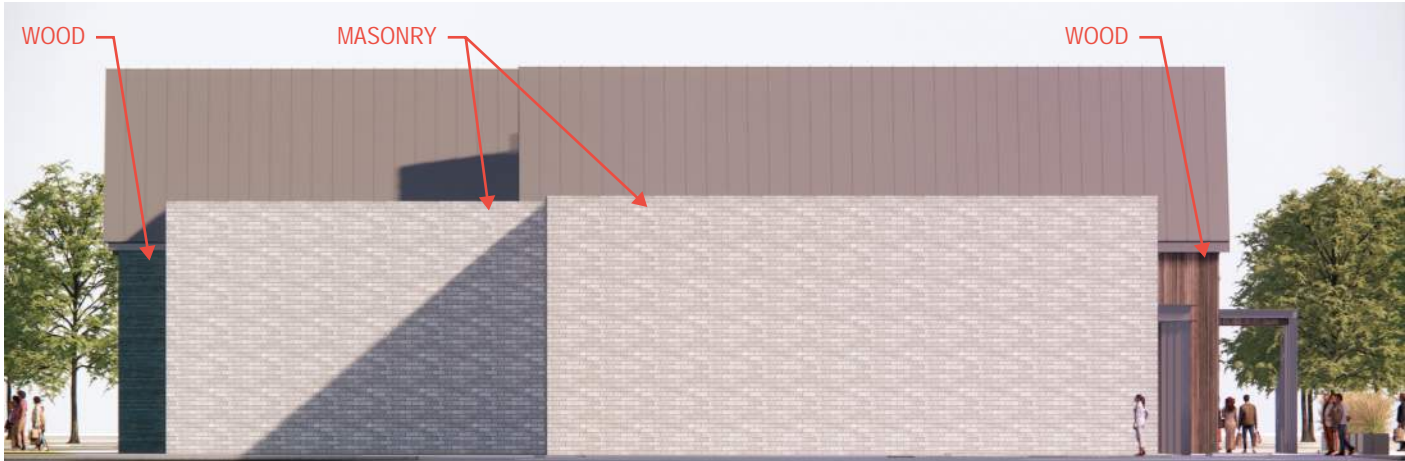
Detail needed for required two offsets, at least 18in in depth, on elevations 50ft or greater in length.

Information not yet provided for the protected primary entry feature. Coverings shall be no smaller than three feet in depth.

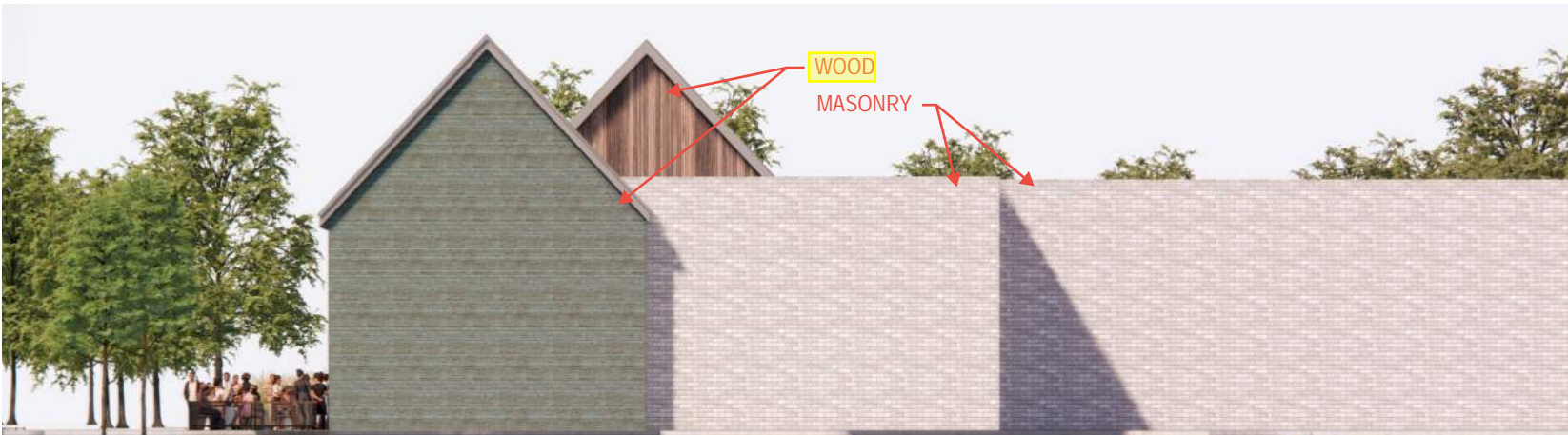
Information not yet provided from the additional feature options in Section 146-139(f)(9)(f)(6).



ELEVATION 1



ELEVATION 2



ELEVATION 3



ELEVATION 4

1: NORTH FACADE MATERIAL PERCENTAGES

MASONRY	53%
STUCCO	0%
WOOD	47%
TILT WALL	0%
METAL PANEL	0%

2: EAST FACADE MATERIAL PERCENTAGES

MASONRY	92%
STUCCO	0%
WOOD	8%
TILT WALL	0%
METAL PANEL	0%

3: SOUTH FACADE MATERIAL PERCENTAGES

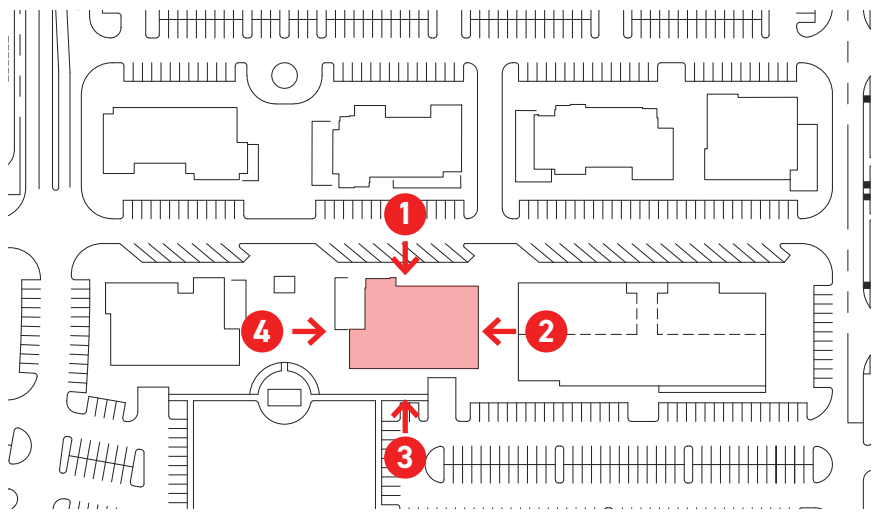
MASONRY	69%
STUCCO	0%
WOOD	31%
TILT WALL	0%
METAL PANEL	0%

4: WEST FACADE MATERIAL PERCENTAGES

MASONRY	0%
STUCCO	0%
WOOD	100%
TILT WALL	0%
METAL PANEL	0%

50% masonry finishing material required on all elevations.

Architectural wood accents are not to exceed more than 20% of any elevation.





WHOLE FOODS RETAIL PLAZA OVERALL MASSING





WHOLE FOODS RETAIL PLAZA OVERALL MASSING





WHOLE FOODS RETAIL PLAZA OVERALL MASSING





WHOLE FOODS RETAIL PLAZA EXTERIOR ELEVATIONS



ELEVATION 1



ELEVATION 2

1: NORTH FACADE MATERIAL PERCENTAGES

MASONRY	34%
STUCCO	0%
WOOD	36%
TILT WALL	30%
METAL PANEL	0%

2: NORTH FACADE MATERIAL PERCENTAGES

MASONRY	5%
STUCCO	0%
WOOD	81%
TILT WALL	14%
METAL PANEL	0%

50% masonry finishing material required on all elevations.

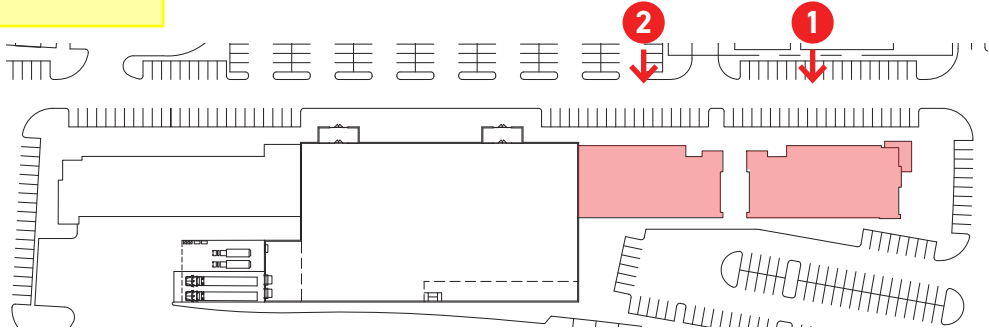
Architectural wood accents are not to exceed more than 20% of any elevation.

No more than 20% of any building elevation may be finished with bright, pure tone primary or secondary colors.

Detail needed for required two offsets, at least 18in in depth, on elevations 50ft or greater in length.

Information not yet provided for the protected primary entry feature. Coverings shall be no smaller than three feet in depth.

Information not yet provided from the additional feature options in Section 146-139(f)(9)(f)(6).





WHOLE FOODS RETAIL PLAZA EXTERIOR ELEVATIONS



ELEVATION 3



ELEVATION 4

3: NORTH FACADE MATERIAL PERCENTAGES

MASONRY	0%
STUCCO	91%
WOOD	9%
TILT WALL	0%
METAL PANEL	0%

4: NORTH FACADE MATERIAL PERCENTAGES

MASONRY	29%
STUCCO	0%
WOOD	16%
TILT WALL	40%
METAL PANEL	15%

50% masonry finishing material required on all elevations.

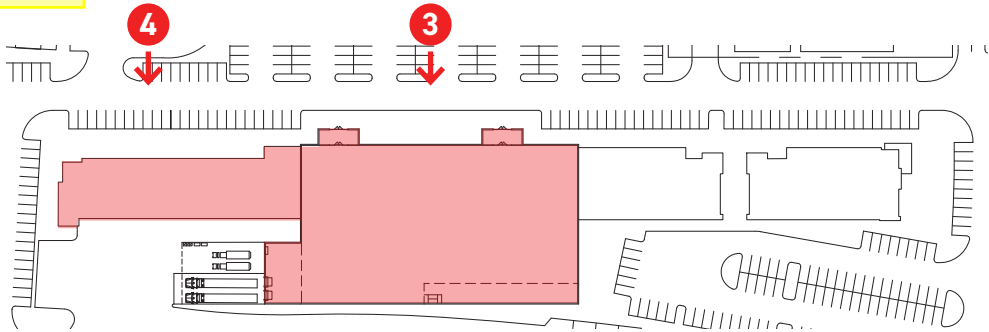
Corrugated metal is not a permitted metal panel material

No more than 20% of any building elevation may be finished with bright, pure tone primary or secondary colors.

Detail needed for required two offsets, at least 18in in depth, on elevations 50ft or greater in length.

Information not yet provided for the protected primary entry feature. Coverings shall be no smaller than three feet in depth.

Information not yet provided from the additional feature options in Section 146-139(f)(9)(f)(6).





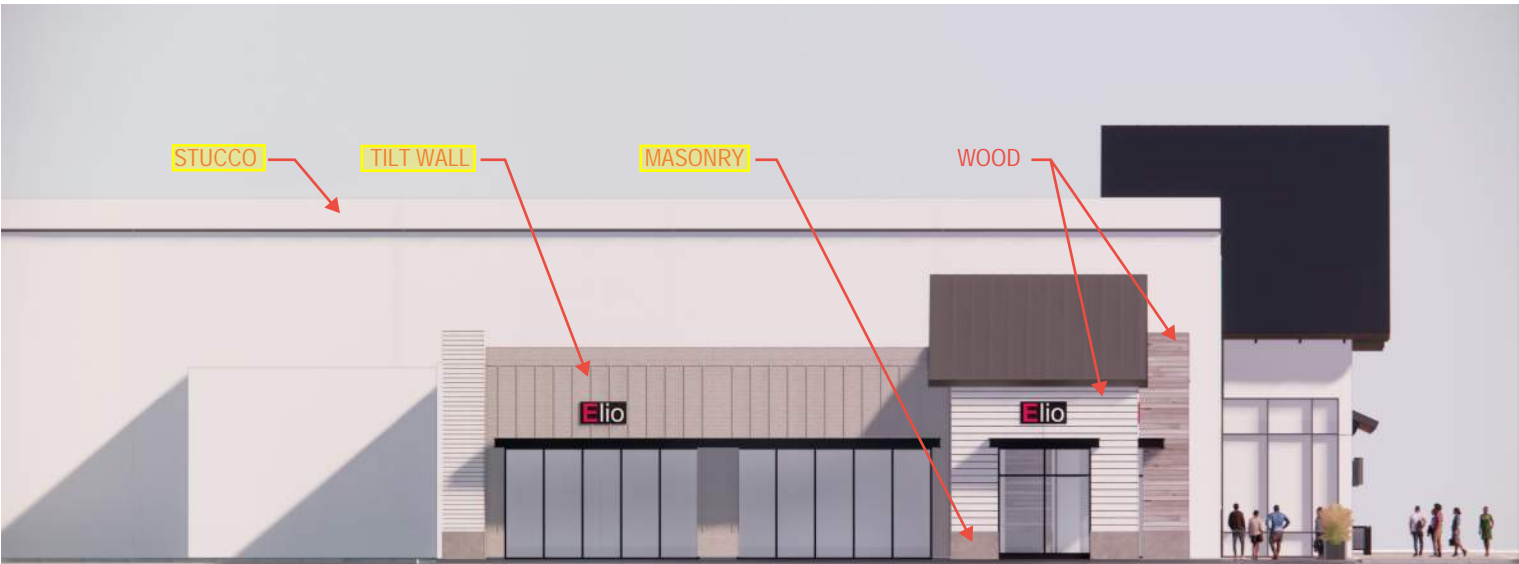
WHOLE FOODS RETAIL PLAZA EXTERIOR ELEVATIONS



ELEVATION 5



ELEVATION 7



ELEVATION 6

5: EAST FACADE MATERIAL PERCENTAGES

MASONRY	34%
STUCCO	0%
WOOD	18%
TILT WALL	48%
METAL PANEL	0%

6: EAST FACADE MATERIAL PERCENTAGES

MASONRY	2%
STUCCO	74%
WOOD	10%
TILT WALL	14%
METAL PANEL	0%

50% masonry finishing material required on all elevations.

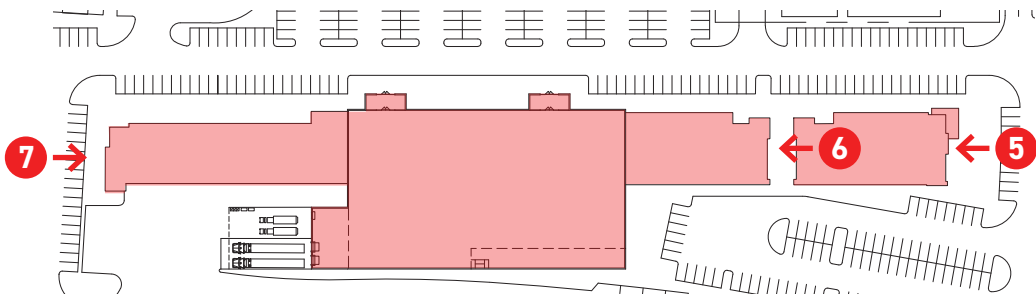
7: WEST FACADE MATERIAL PERCENTAGES

MASONRY	10%
STUCCO	72%
WOOD	6%
TILT WALL	12%
METAL PANEL	0%

Detail needed for required two offsets, at least 18in in depth, on elevations 50ft or greater in length.

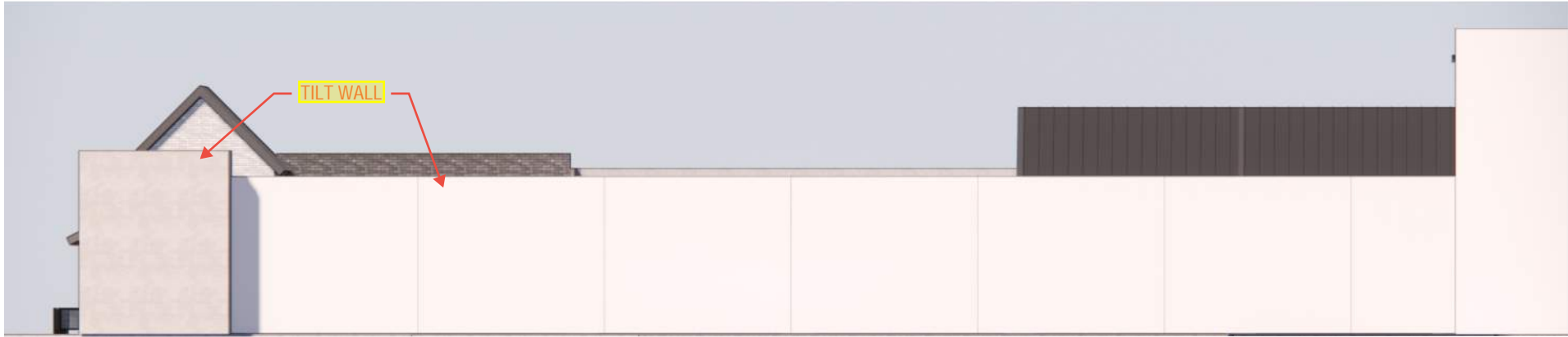
Information not yet provided for the protected primary entry feature. Coverings shall be no smaller than three feet in depth.

Information not yet provided from the additional feature options in Section 146-139(f)(9)(f)(6).





WHOLE FOODS RETAIL PLAZA EXTERIOR ELEVATIONS

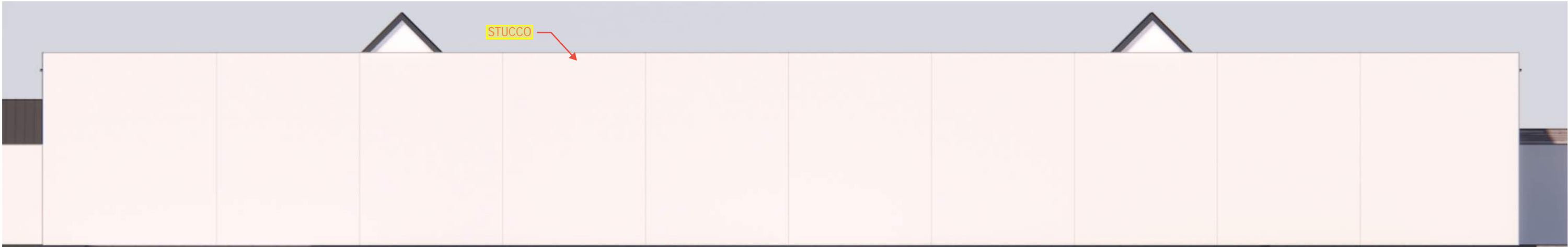


ELEVATION 8

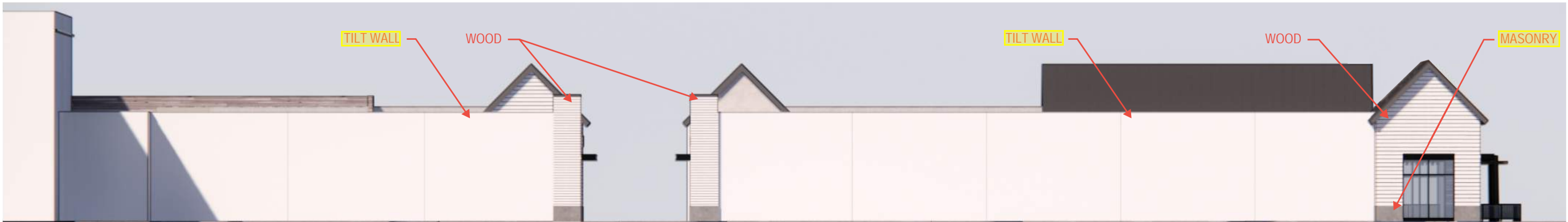
Detail needed for required two offsets, at least 18in in depth, on elevations 50ft or greater in length.

Information not yet provided for the protected primary entry feature. Coverings shall be no smaller than three feet in depth.

Information not yet provided from the additional feature options in Section 146-139(f)(9)(f)(6).



ELEVATION 9



ELEVATION 10

50% masonry finishing material required on all elevations.

8: WEST FACADE MATERIAL PERCENTAGES

MASONRY	0%
STUCCO	0%
WOOD	0%
TILT WALL	100%
METAL PANEL	0%

9: SOUTH FACADE MATERIAL PERCENTAGES

MASONRY	0%
STUCCO	100%
WOOD	0%
TILT WALL	0%
METAL PANEL	0%

10: SOUTH FACADE MATERIAL PERCENTAGES

MASONRY	1%
STUCCO	0%
WOOD	11%
TILT WALL	88%
METAL PANEL	0%

