

# ONE MCKINNEY 2040

Regional Mobility &  
Preliminary Thoroughfare Plan



- MONEY MAGAZINE 2014 -

# ONE McKinney 2040

## What is included in Mobility and Transportation?

1. **Master Thoroughfare Plan (MTP)**
2. **Illustrative Cross-Sections**
3. **Key Mobility Considerations**

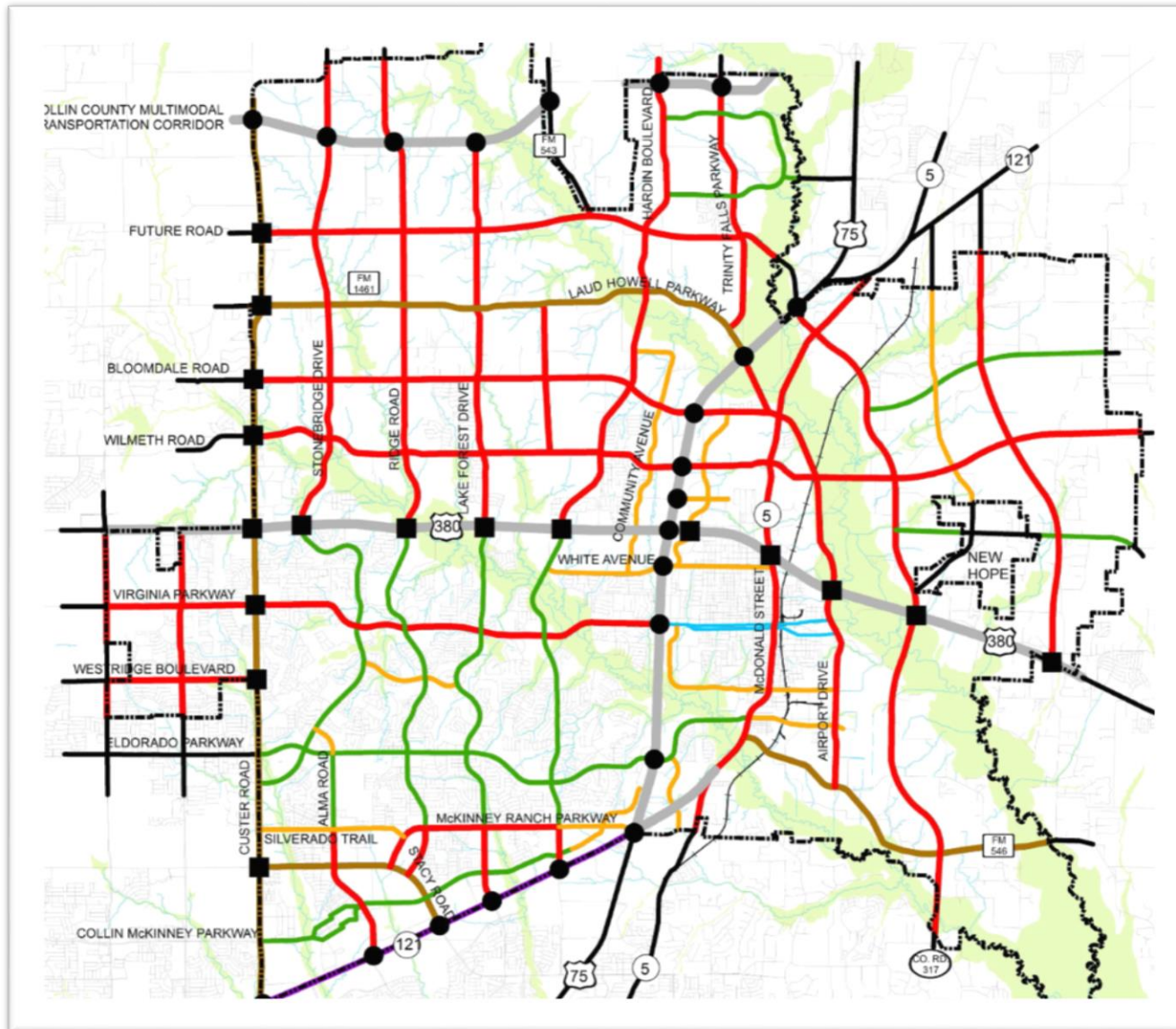
Alternative Modes (i.e. bike accommodations, public transportation, etc)  
Regional Connectivity

# ONE McKinney 2040

**What do we hope to achieve with the Council as part of tonight's discussion?**

*Consensus and general direction in the development of the Master Thoroughfare Plan.*

# 2004 Master Thoroughfare Plan (MTP)



## Roadway Classifications

- Major Regional Highway / Multi-Modal
- Tollway
- Principal Arterial (6-lane)
- Major Arterial (6-lane)
- Minor Arterial (4-lane)
- Greenway Arterial (4-lane)
- Town Thoroughfare
- Road By Others

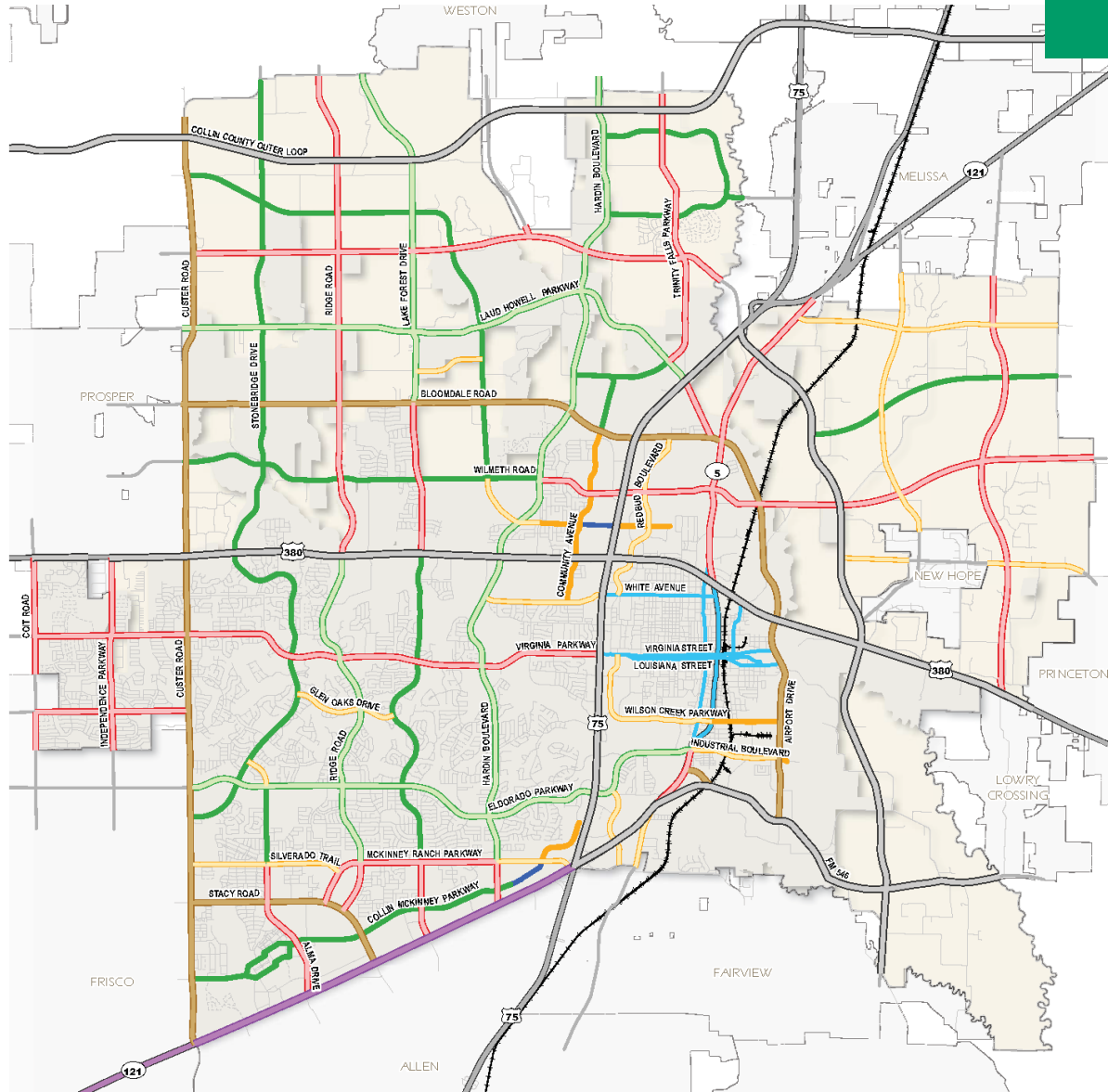
# ONE McKinney 2040: Draft MTP

## Roadway Classifications

Draft Thoroughfare Plan 2016

- Major Regional Highway / Multi-Modal
- Tollway
- Principal Arterial - 130' ROW (6 Lanes)
- Major Arterial (6 Lanes)
- Greenway Arterial (6 Lanes)
- Greenway Arterial (4 Lanes)
- Minor Arterial (4 Lanes Divided)
- Minor Arterial (4 Lanes Undivided)
- Minor Arterial (3 Lanes)
- Town Thoroughfare
- Road By Others

Draft from  
August 2016





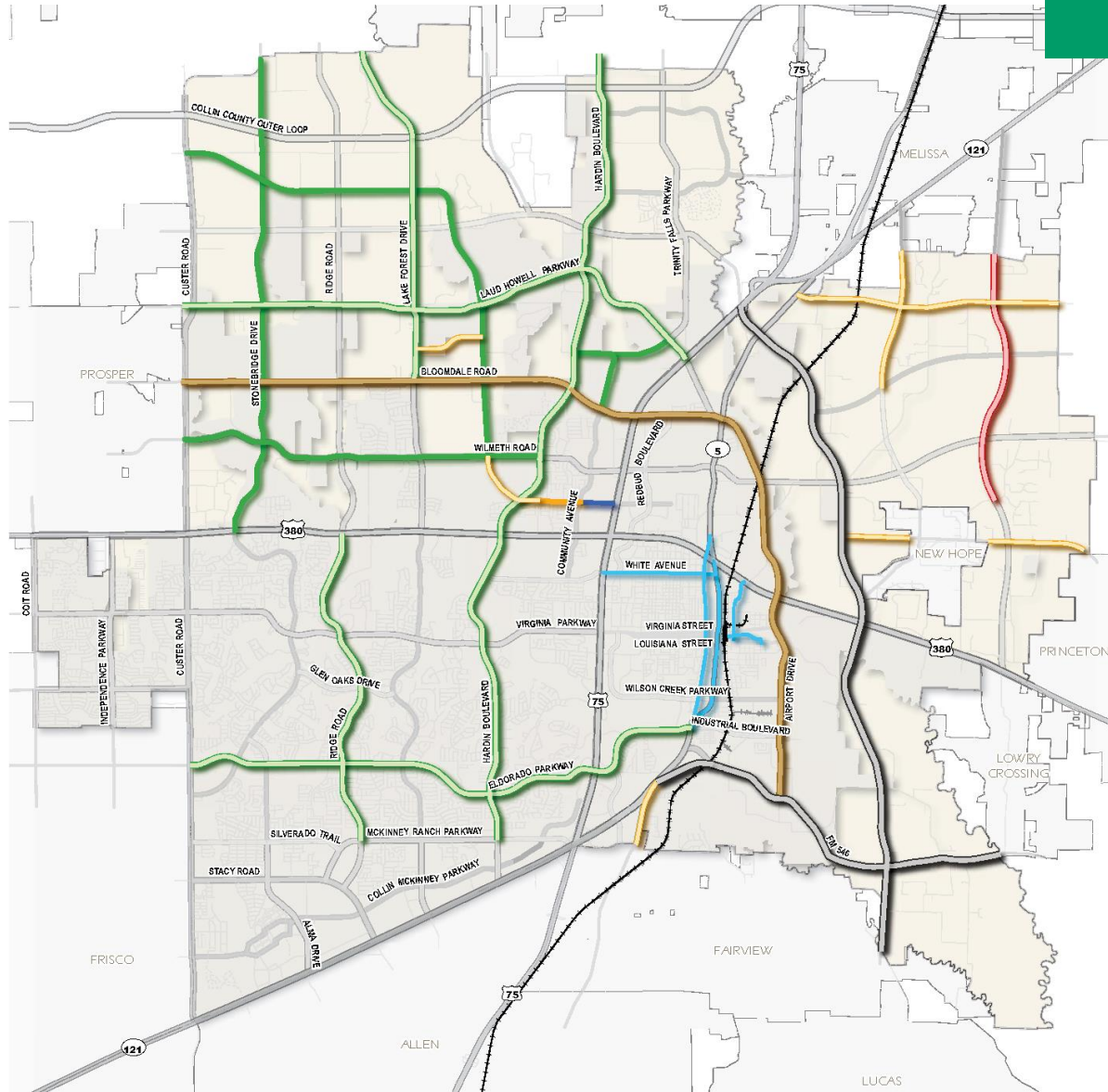
# ONE McKinney 2040: Draft MTP

## Key Changes

Classifications

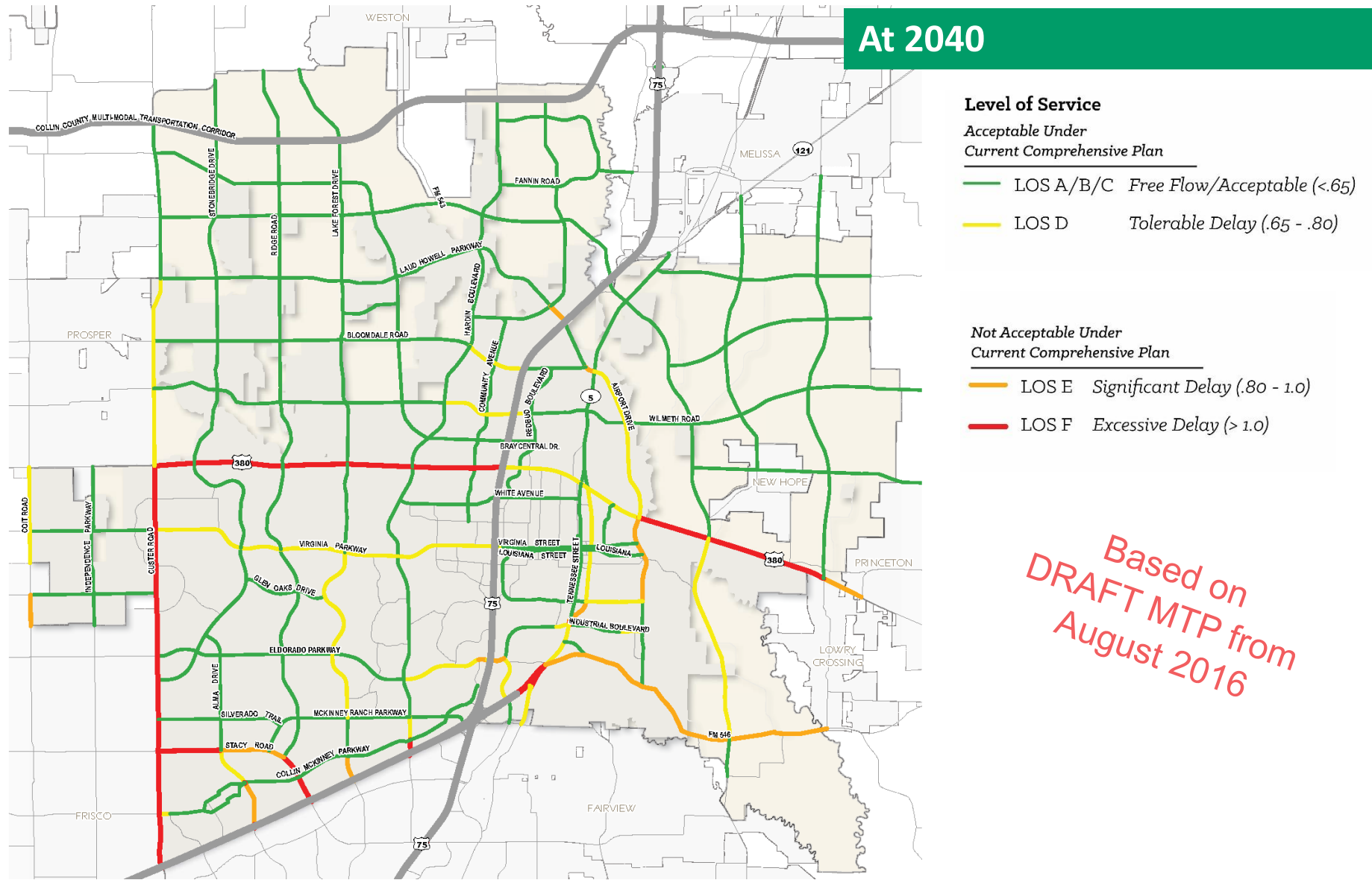
Updated Alignments

New Alignments

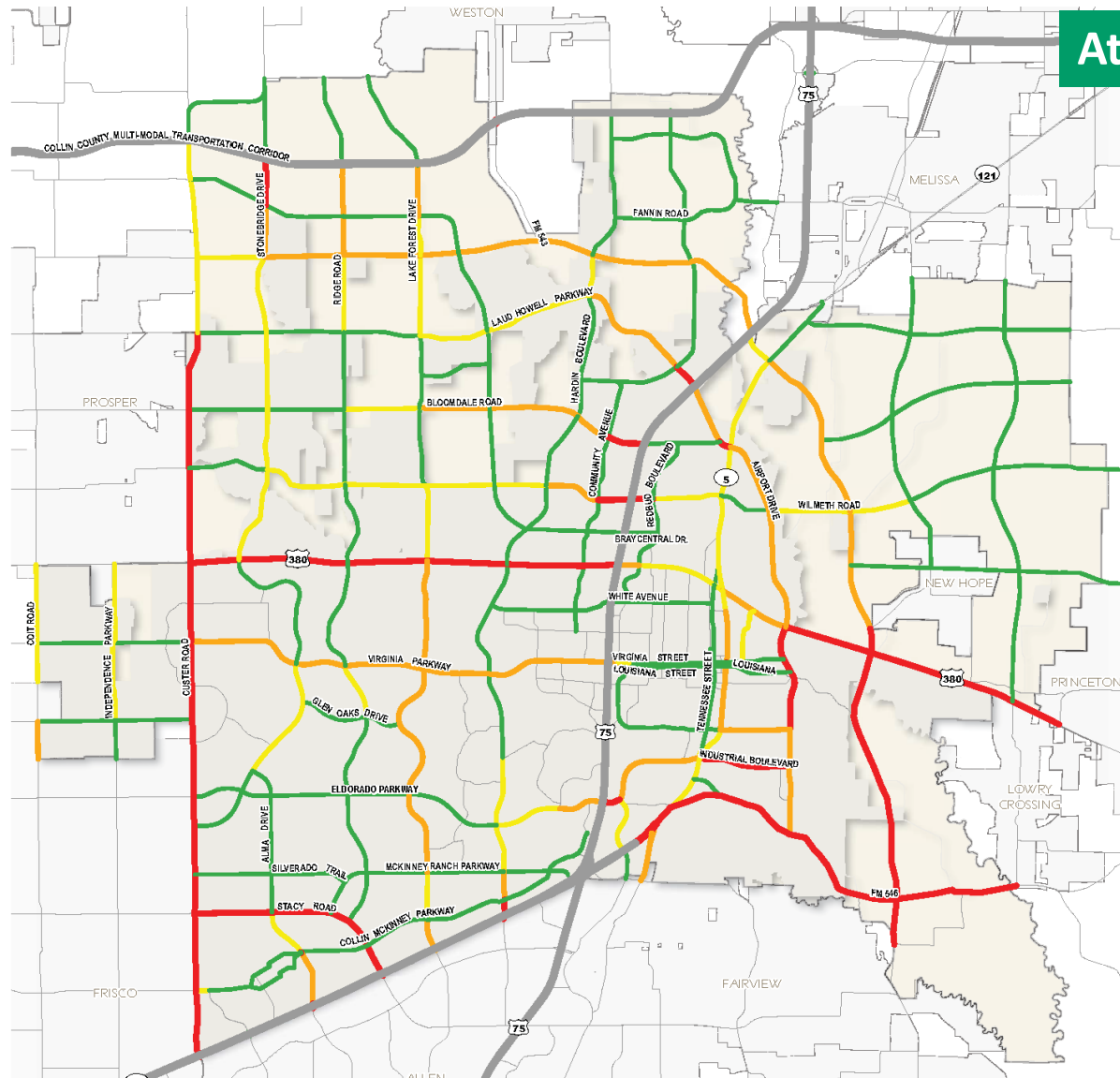


Draft from  
August 2016

# Preliminary Thoroughfare Plan: TDM Results



# Preliminary Thoroughfare Plan: TDM Results



## At Buildout

### Level of Service

Acceptable Under  
Current Comprehensive Plan

— LOS A/B/C Free Flow/Acceptable (<.65)

— LOS D Tolerable Delay (.65 - .80)

Not Acceptable Under  
Current Comprehensive Plan

— LOS E Significant Delay (.80 - 1.0)

— LOS F Excessive Delay (> 1.0)

Based on  
DRAFT MTP from  
August 2016



# Regional Mobility Considerations

## **Meanwhile, in the region...**

- Collin County updating population and employment projections
- TxDOT conducting US 380 Feasibility Study
- RTC completing Mobility 2040 Plan and seeking to identify priority projects
- City of Frisco and Town of Prosper supportive of converting US 380 into controlled-access facility

# Regional Transportation Council (RTC)

## Roadway Action Plan for Collin County

### Corridor 1 (Near Term): US 75

- Widening in Allen
- PGBT Interchange Ramp Improvement
- Reconstruct Ridgeview Drive Interchange
- Technology Lane

### Corridor 2 (Near Term): Collin County Outer Loop

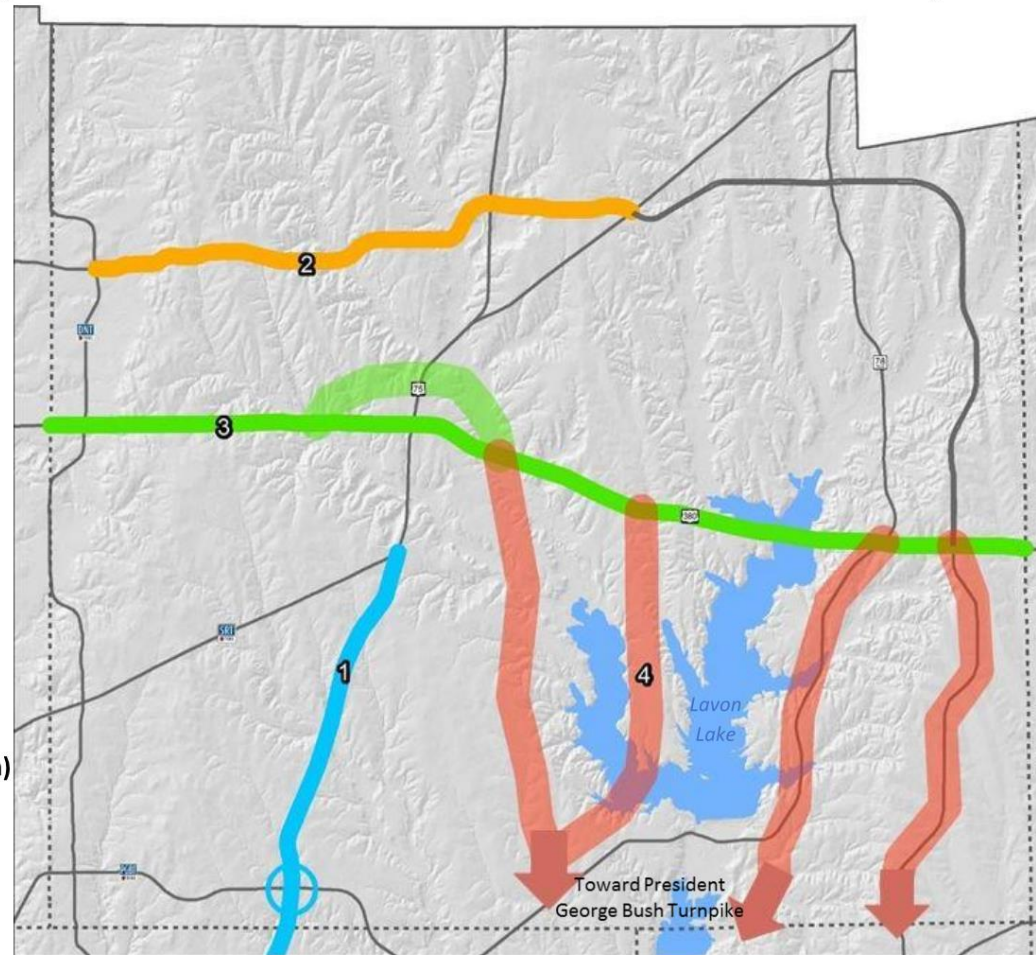
- Staged construction of frontage roads

### Corridor 3 (Near Term): US 380

- Countywide Study
- McKinney Bypass

### Corridor 4 (Near & Long Term) Collin County Strategic Transportation Initiative

- Study of non-tolled north/south roadway needs and opportunities





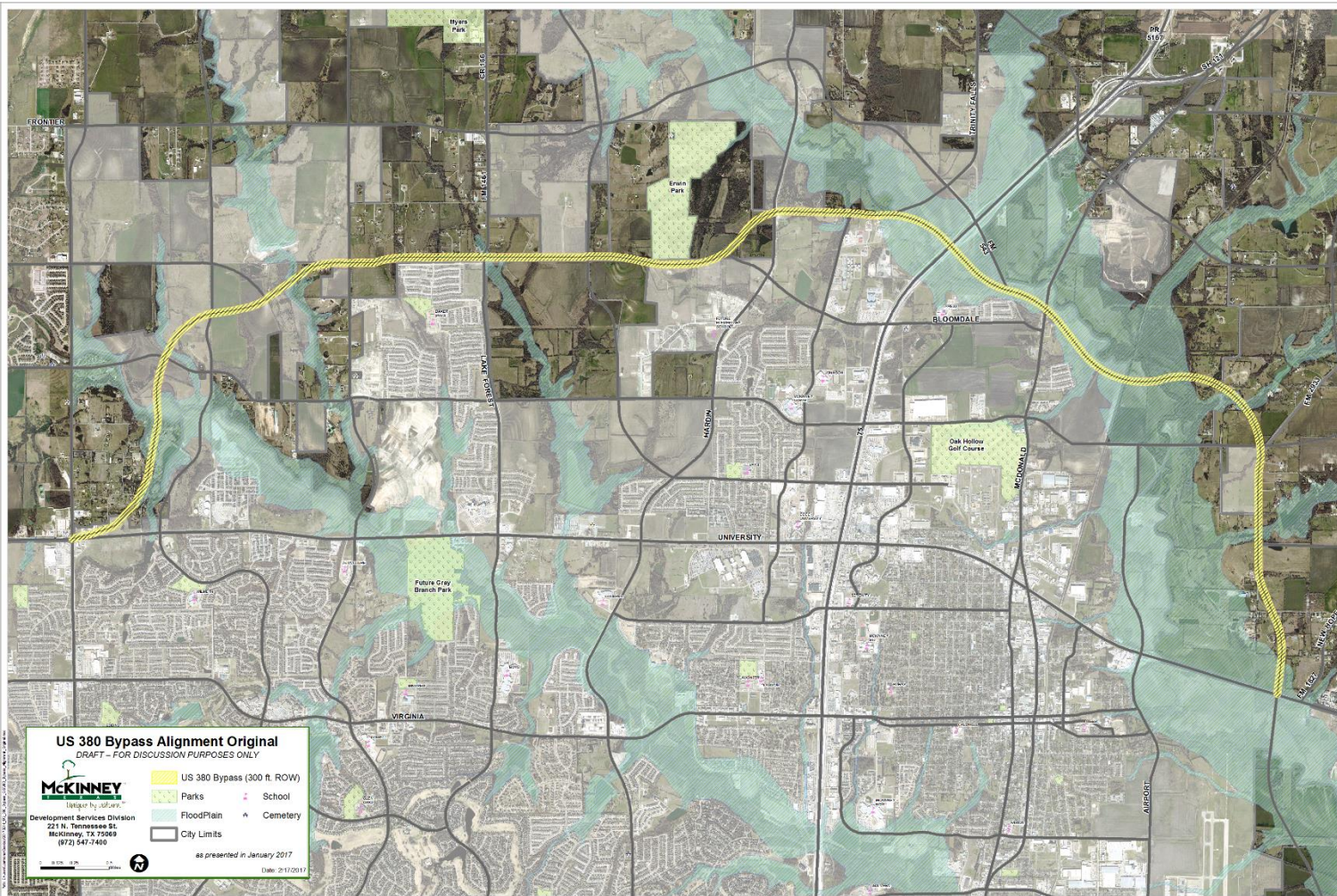
# McKinney Regional Choices: US 380 Bypass – Original Bloomdale Option

## PROS:

- Creates regional solution without impacting neighboring communities
- Creates much needed capacity near US75/FM543
- Located with good separation from CCOL

## CONS:

- Impacts on existing/ planned residential developments
- Considerations at Erwin Park
- Disrupts a portion of Walnut Grove neighborhood
- Impacts tying back to US 380 at Custer



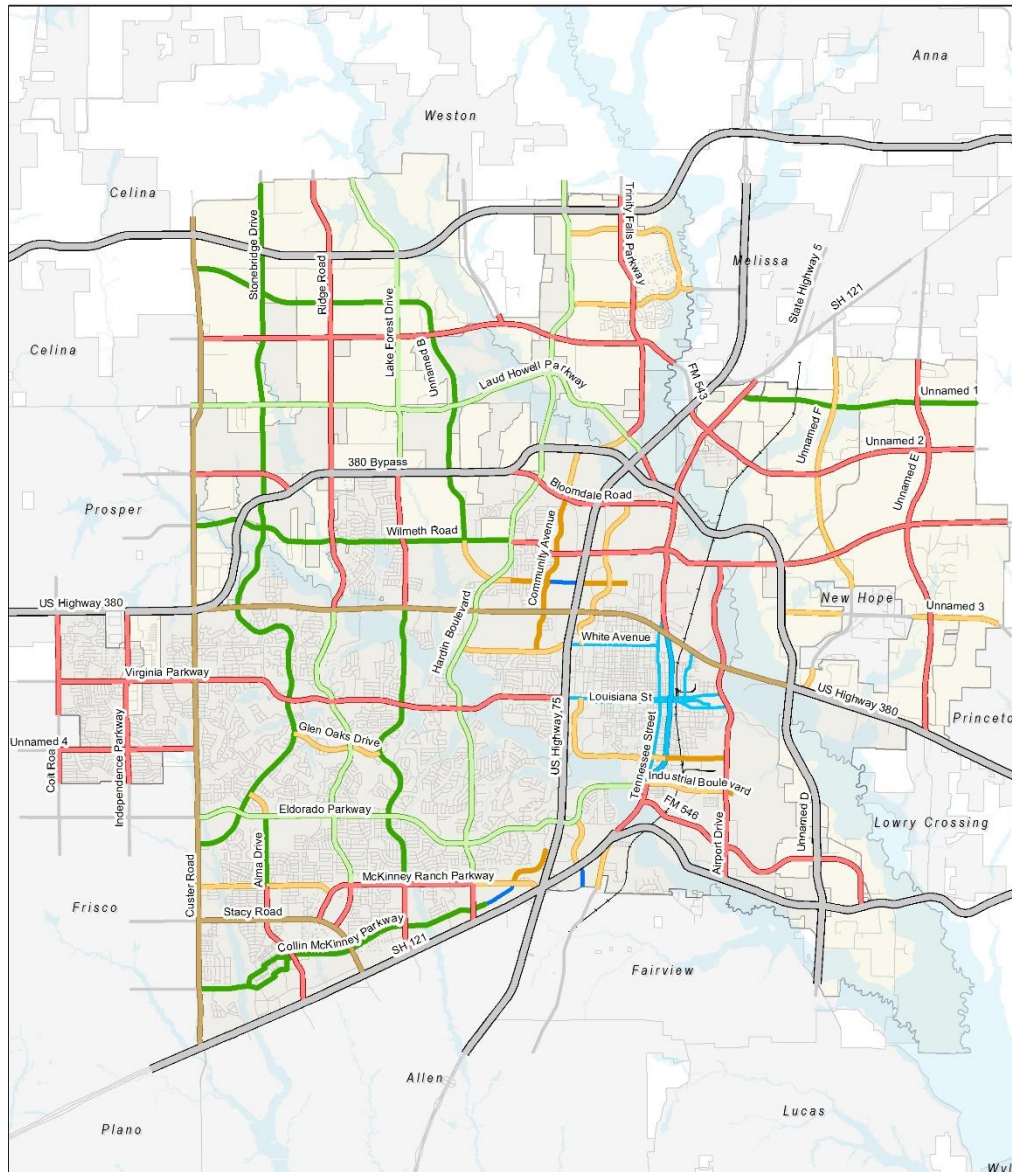


# Preliminary Thoroughfare Plan with Original US 380 Bypass – Bloomdale Option

## Roadway Classifications

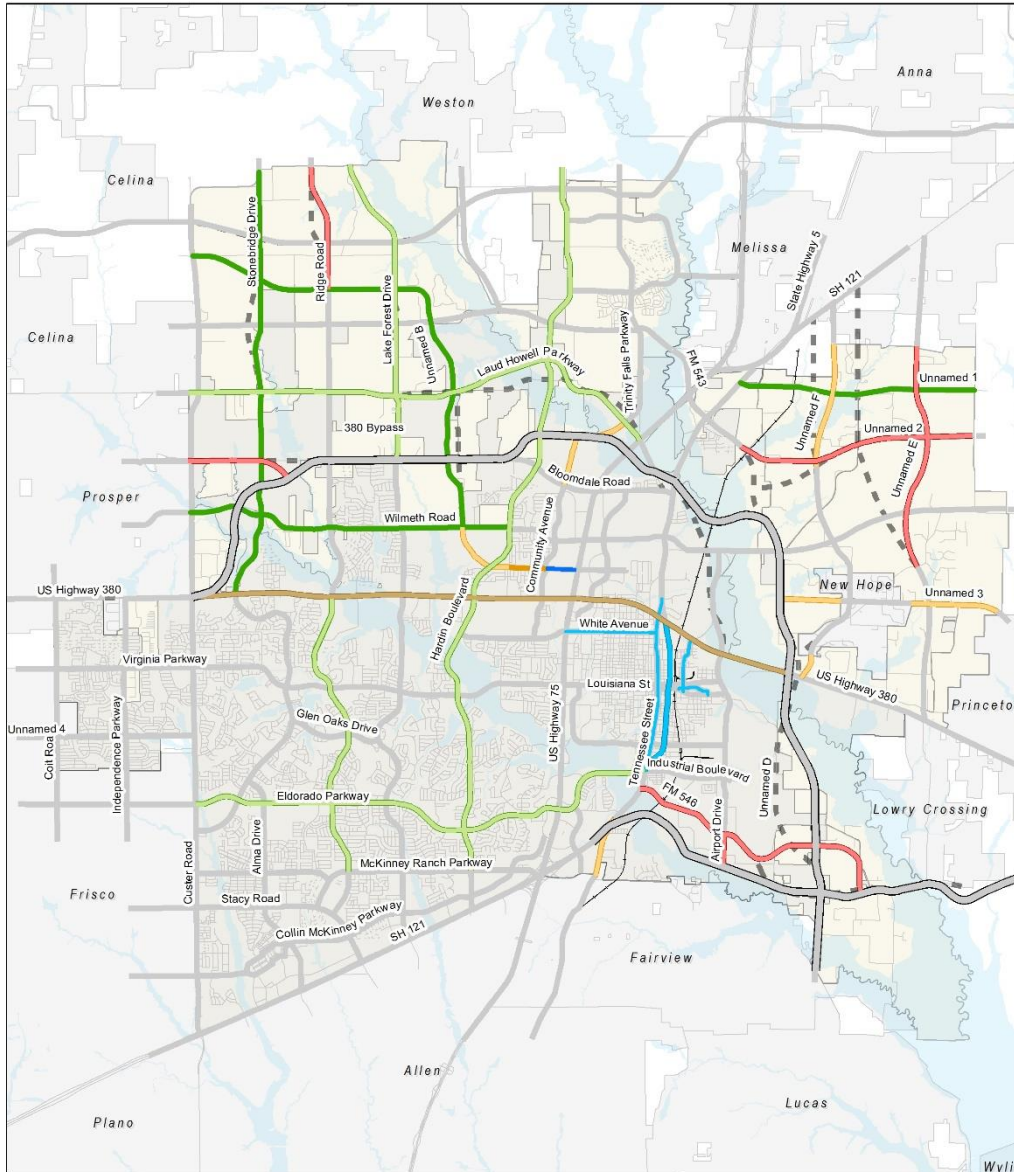
### Draft Thoroughfare Plan

- Major Regional Highway / Multi-Modal
- Tollway
- Principal Arterial - 130' ROW (6 Lanes)
- Major Arterial (6 Lanes)
- Greenway Arterial (6 Lanes)
- Greenway Arterial (4 Lanes)
- Minor Arterial (4 Lanes Divided)
- Minor Arterial (4 Lanes Undivided)
- Minor Arterial (3 Lanes)
- Town Thoroughfare
- Road By Others



Based on  
January 23  
discussion

# Preliminary Thoroughfare Plan with Original US 380 Bypass – Bloomdale Option



## Key Changes

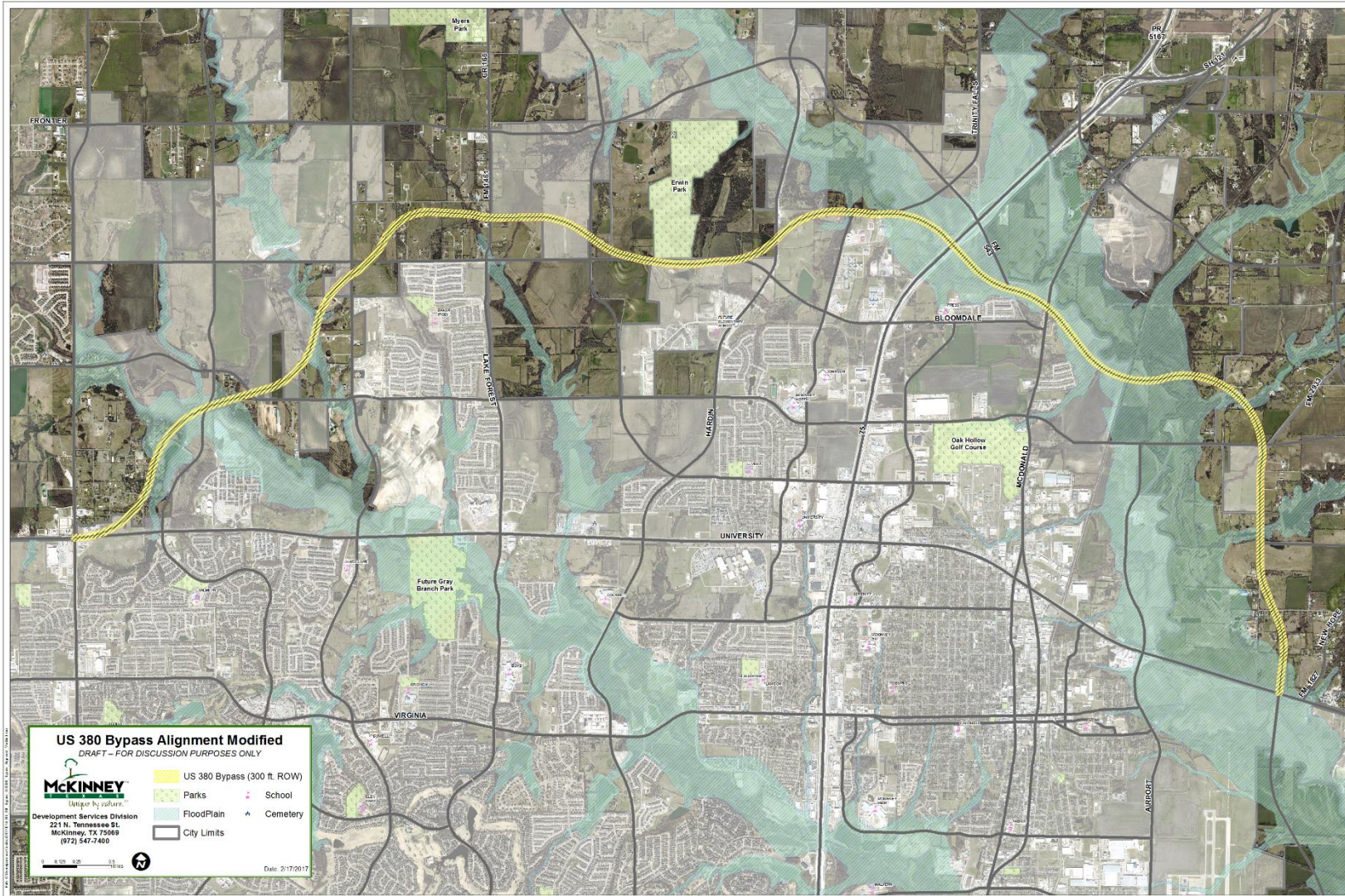
- Alignment changes
- Classification Changes
- Newly Recognized Thoroughfares

Based on  
January 23  
discussion



# McKinney Regional Choices:

## US 380 Bypass – Modified Bloomdale Option



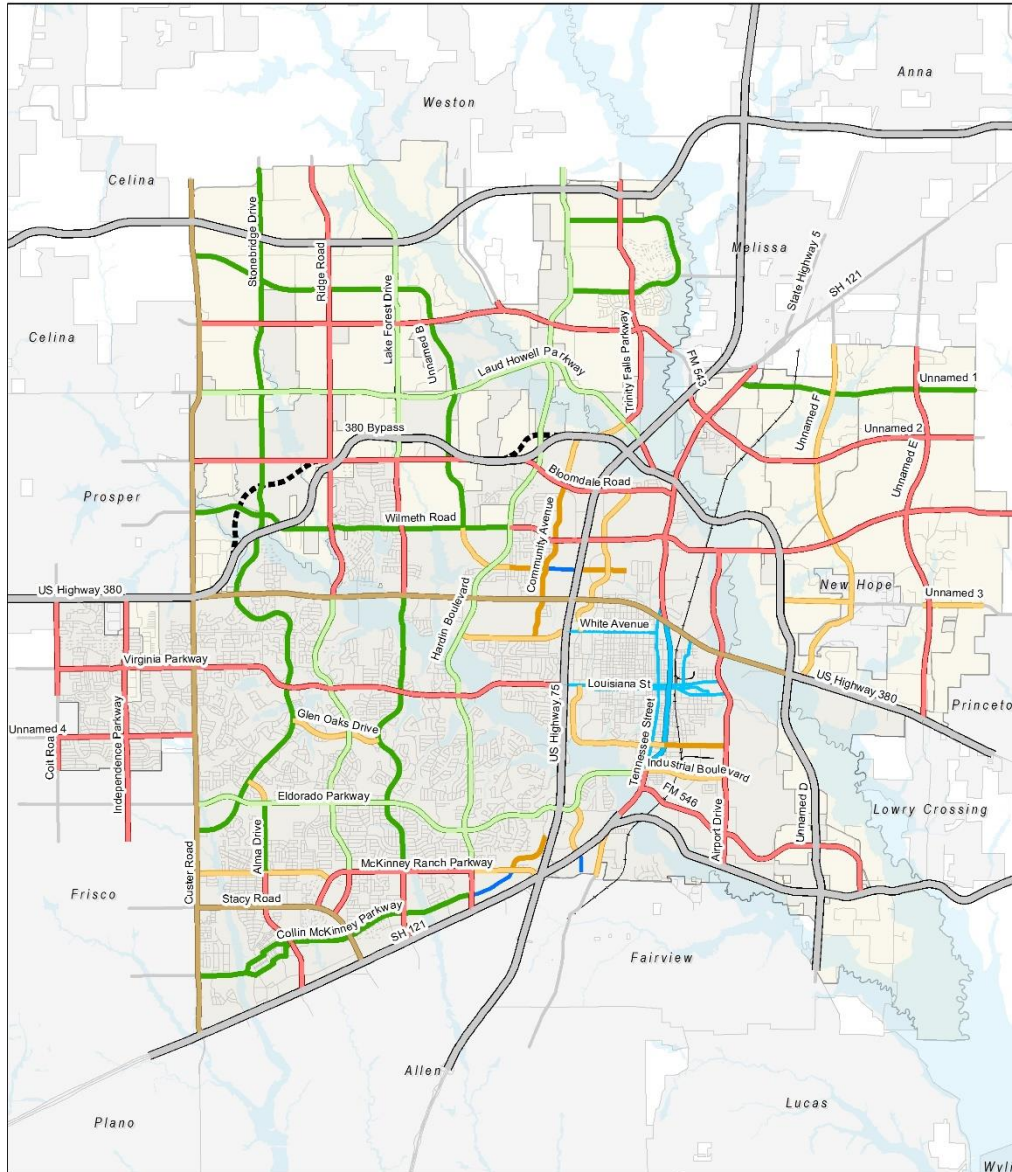


# Preliminary Thoroughfare Plan with US 380 Bypass – Modified Bloomdale Option

## Roadway Classifications

### Draft Thoroughfare Plan

- Major Regional Highway / Multi-Modal
- Tollway
- Principal Arterial - 130' ROW (6 Lanes)
- Major Arterial (6 Lanes)
- Greenway Arterial (6 Lanes)
- Greenway Arterial (4 Lanes)
- Minor Arterial (4 Lanes Divided)
- Minor Arterial (4 Lanes Undivided)
- Minor Arterial (3 Lanes)
- Town Thoroughfare
- Road By Others



# Next Steps

- **Should Council be supportive of the US 380 Bypass – Original or the US 380 Bypass – Modified, or should Council desire to make minor modifications to the Thoroughfare Plan**

*Continue to develop the Master Thoroughfare Plan and the remainder of the ONE McKinney 2040 Comprehensive Plan for anticipated completion by Spring 2017.*

- **Should Council be supportive of the US 380 bypass, but not along either of the Bloomdale alignment options**

*Staff will need to modify the scope of work with the consultant team in order to include the additional services necessary to develop and evaluate additional bypass options as well as any necessary land use updates and outreach events related to the completion of the ONE McKinney 2040 Comprehensive Plan Update.*