



Introduction to Public Transit Funding

McKinney Urban Transit District Board

February 28, 2017

Sarah Chadderdon

North Central Texas Council of Governments

What does transit funding support?

General Public Transit Services

Regular, continuing, shared-ride

Modes

Demand response (go anywhere)

Fixed route (follow a path)



clipartfest.com

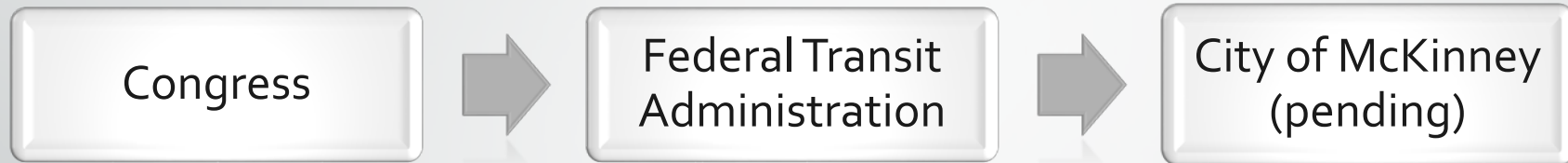
Specialized Public Transit Services

Work and work-related activities for individuals with low incomes



Where does transit funding come from?

Federal Funds



Local Funds

Cities

Donations

Counties

Businesses

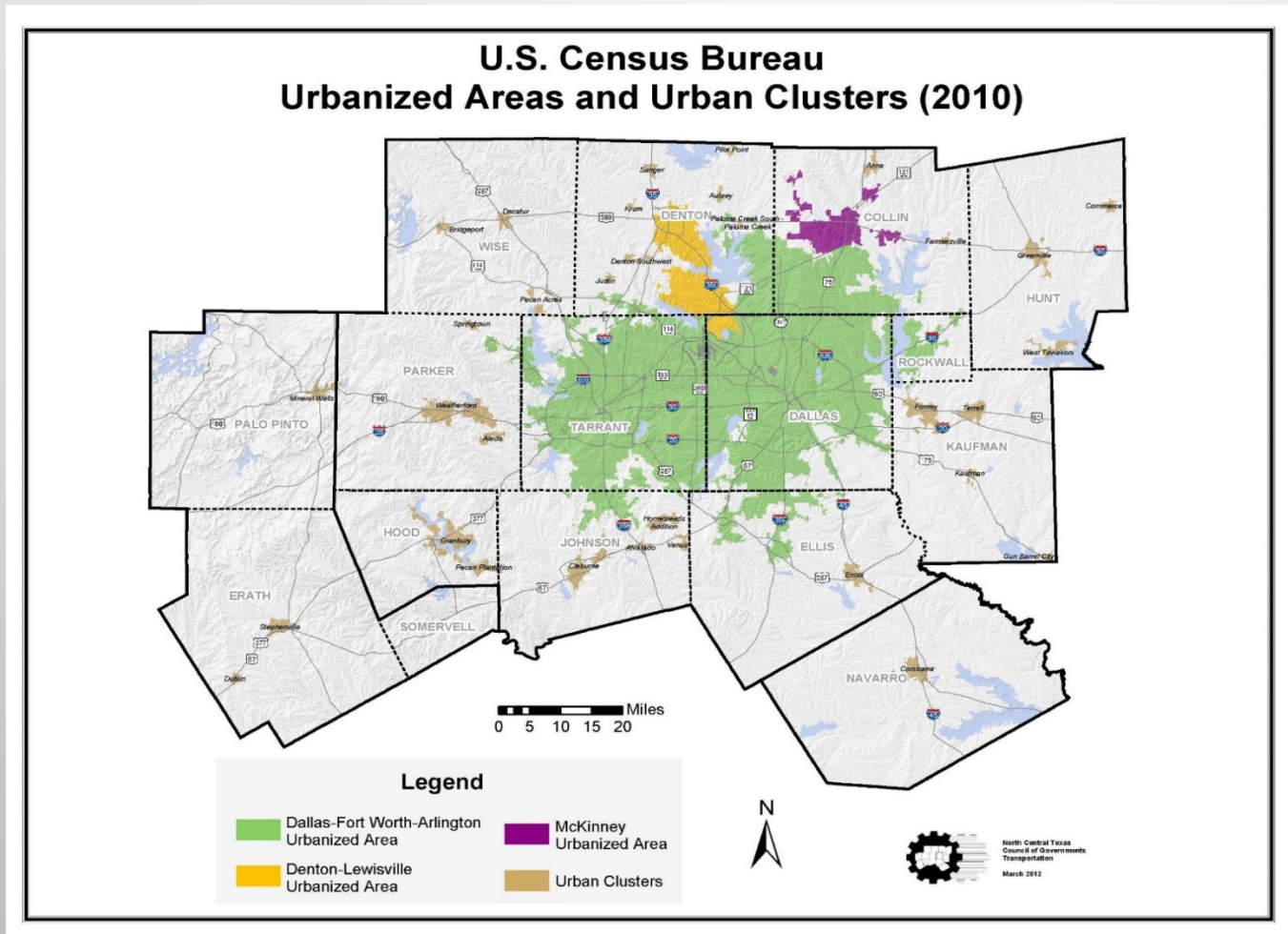
Contracts for service

Other government programs

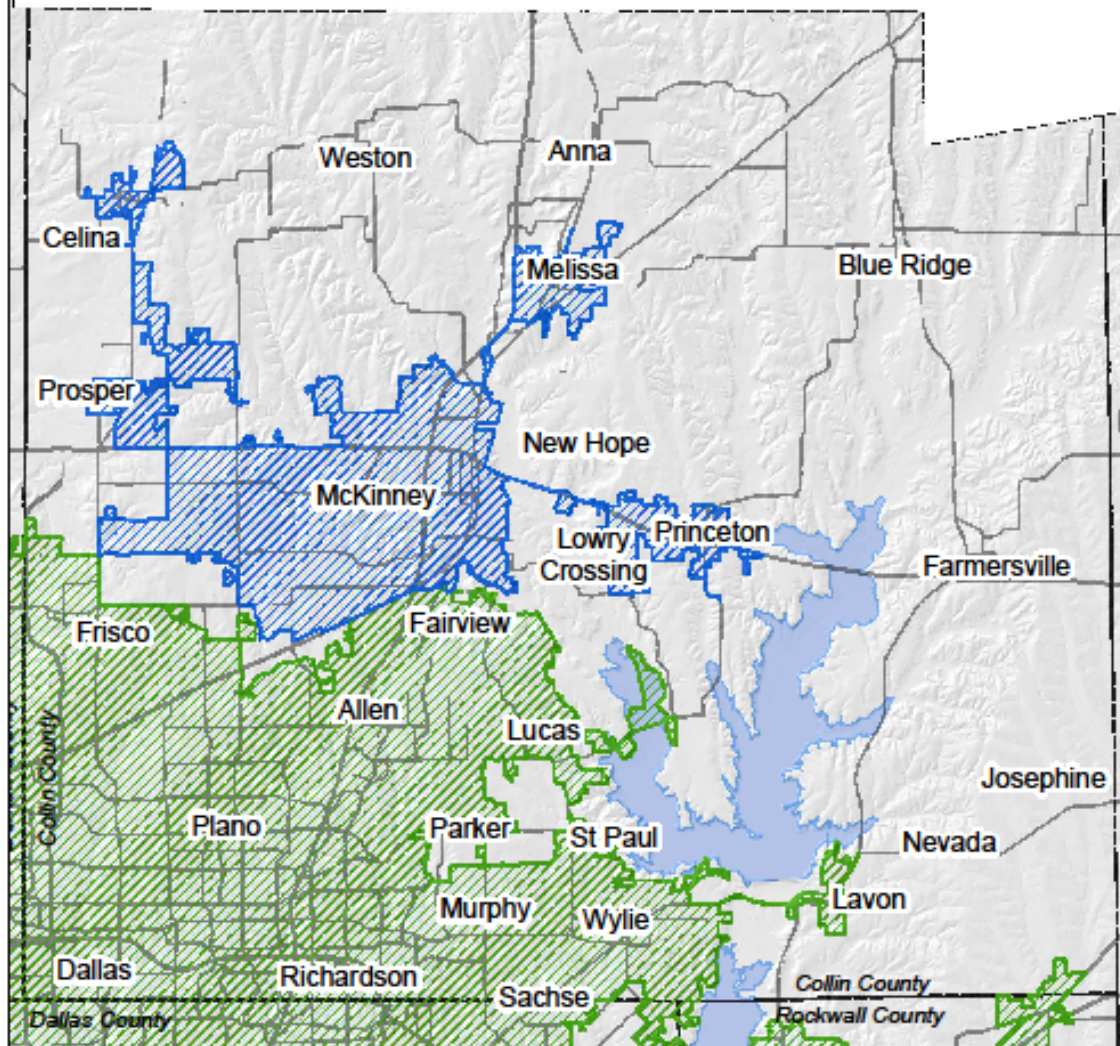
State Funds






Why does this money come to McKinney?



2010 DFW Urbanized Areas: Collin County



-  2010 Dallas-Fort Worth-Arlington Urbanized Area
-  2010 McKinney Urbanized Area
-  2010 Rural Area



0 1 2 3 4 5 Miles



North Central Texas
Council of Governments

How much money is available?

What can this money be used for?

McKinney Urbanized Area

Approximately \$2.6M in 2016

Capital Expenses (mostly funded with federal money - 80%+)

Vehicles

Maintenance

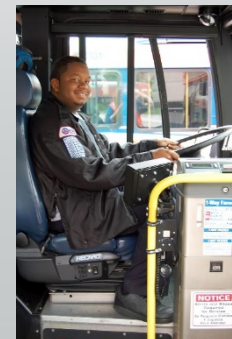
Planning for service



Operating Expenses (mostly funded with local money - 50%)

Fuel

Driver salaries



Sounds good... What's the catch?

Local Matching Requirements

Federal funds will pay a portion of expenses, but requires local matching funds to cover the rest

Building partnerships among communities is necessary

Service Planning and Implementation

Match service to local needs and priorities

Continued dramatic growth leads to increased demand

Flexibility and economies of scale can provide more efficient and effective service for customers

Oversight and Compliance, Administration, Performance Monitoring

Effective service requires effective oversight



How could we calculate local share?

Ridership or Boardings

Number of trips per riders' home jurisdiction

Service Quantity

Measured vehicle hours in each jurisdiction

Population

Population estimates determine share

Complexity and Administrative Cost



Any of these approaches may be used in combination; may be established annually or calculated per period



Timing Is Important



Funding cycles are long

State and federal processes are slow and complicated

Funding for new services must be requested far in advance



What service delivery options are there?

Directly Operated Service

Recipient operates its own transit service, conducts maintenance, and provides vehicles

Service Contracts

Contractor(s) provides transit service

May separately contract for maintenance and/or vehicles

Turnkey Contracts

Contractor(s) provides transit service, maintenance, and vehicles

