



McKINNEY UTD MOBILITY SOLUTIONS

February 28, 2017

AGENCY BACKGROUND

Established Under Texas Transportation Code Chapter 460 (2001)



Supported by 1/2¢ Sales Tax from Denton, Highland Village and Lewisville (2002)



A-train Began Revenue Service (June 2011)



14-Member Board of Directors (Appointed)



AGENCY FACTS



SERVICES

24 Bus Routes
A-TRAIN Commuter Rail
Demand-Response Services

Paratransit Services
Commuter Vanpools



RIDERSHIP

Carried Over 2.9 Million Passengers in FY '16



INNOVATION

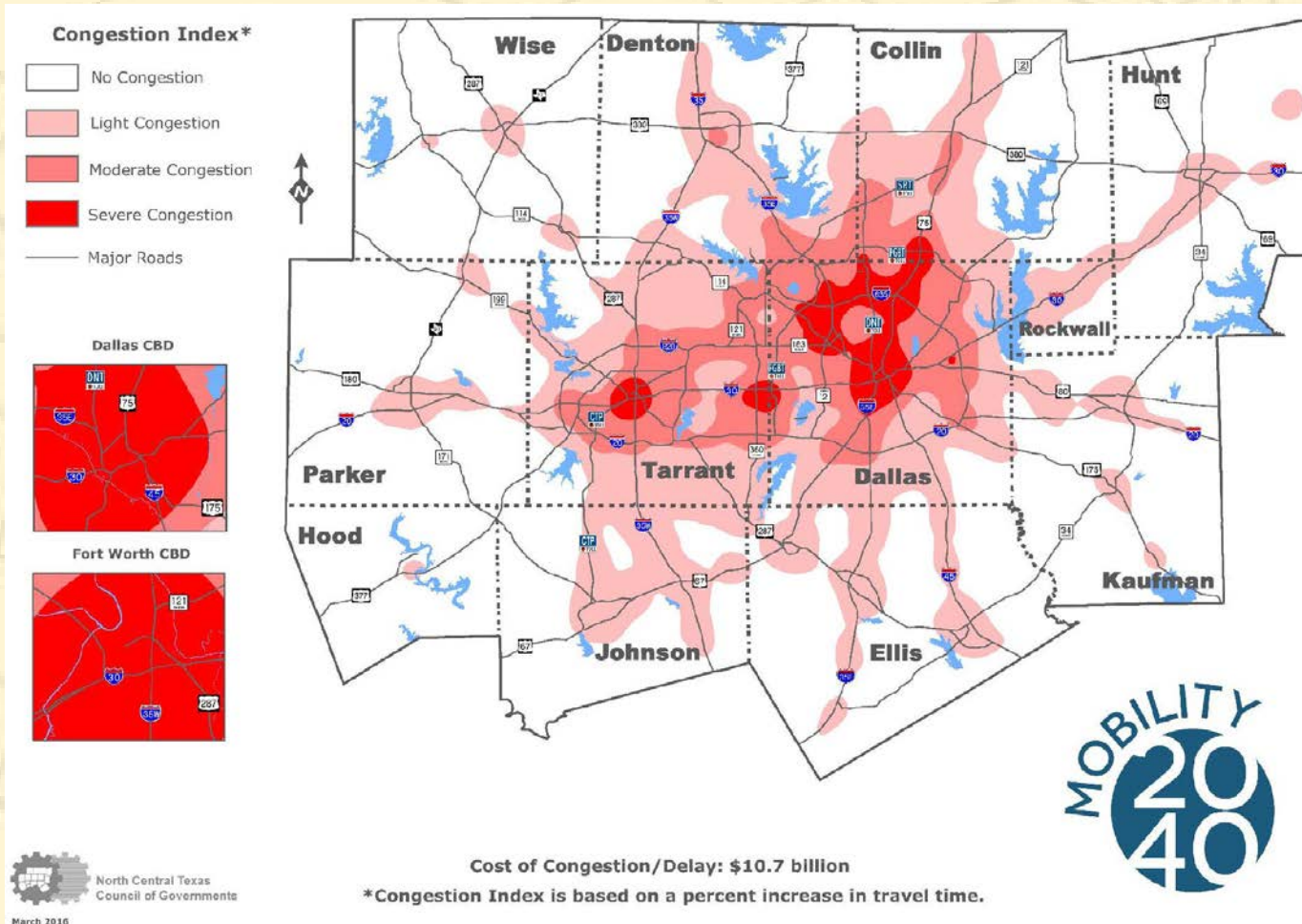
Integrated Uber/Lyft
Taxi Partnership
Real-Time Travel Tools



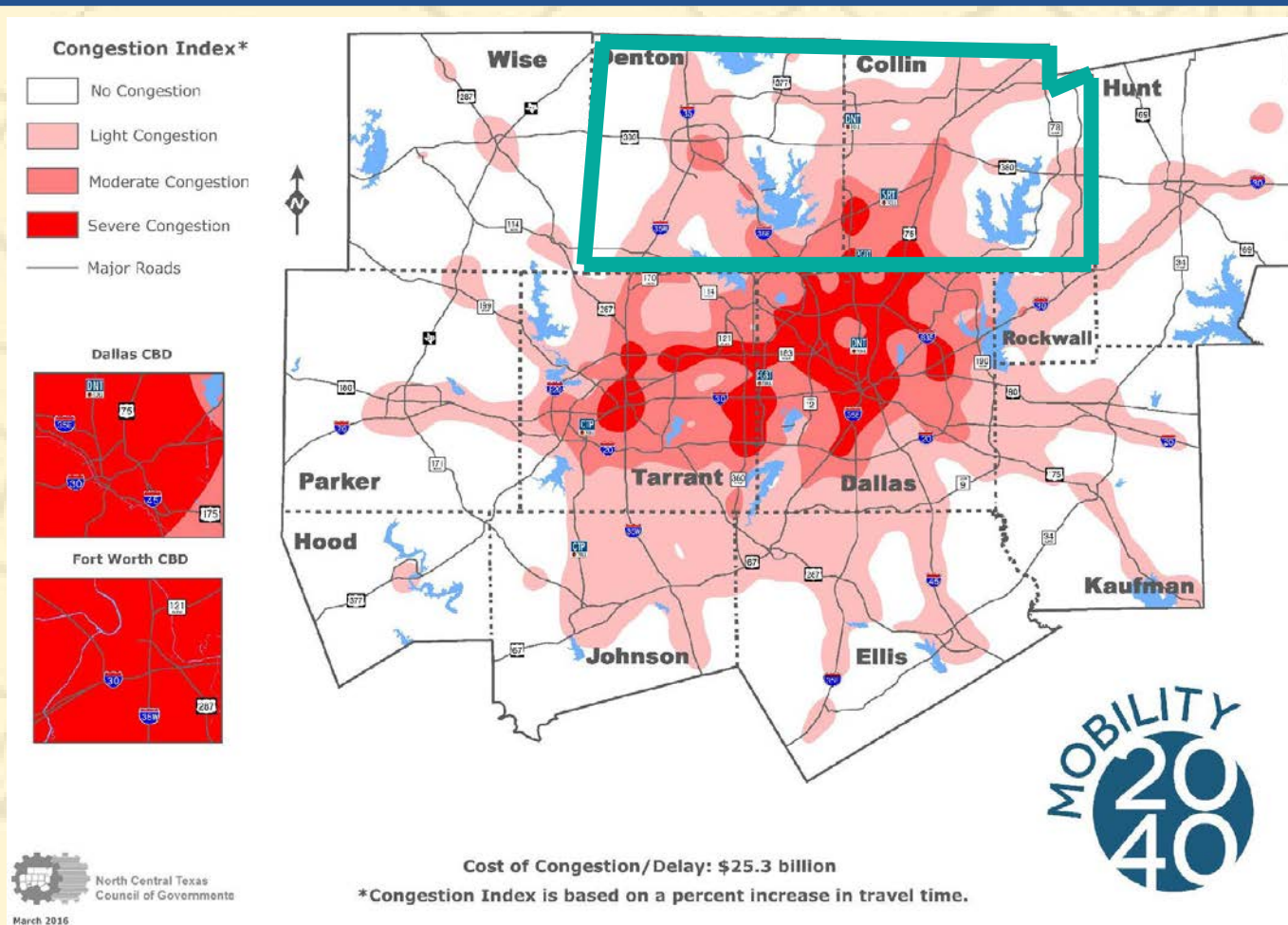
LEADERSHIP

Financial & Transparency Awards
12 Mktg & Comm Awards in FY '16
Regional Involvement (RTC/STTC)

2017 LEVELS OF CONGESTION/DELAY



2040 LEVELS OF CONGESTION/DELAY



EXECUTIVE LEADERSHIP



James C. Cline, Jr., P.E.
President



Anna Mosqueda
Chief Financial
Officer



Raymond Suarez
Chief Operating
Officer



Kristina Brevard
Vice President,
Planning & Development



Nicole Recker
Vice President,
Marketing & Communications

UTD PASSENGER DEMOGRAPHICS

AGE



	Celina	McKinney	Melissa	Princeton	Prosper	Total
0-15	0	207	0	0	0	207
16-25	9	1,858	13	59	46	1,976
26-35	0	636	0	119	2	757
36-45	47	750	0	381	28	1,206
46-55	0	621	4	56	7	688
56-61	0	994	1	30	26	1,051
62 and over	34	3,907	9	94	99	4,143
	90	8,973	27	739	208	10,028

TRIP TYPE



	Celina	McKinney	Melissa	Princeton	Prosper	Total
Medical	47	1,865	5	228	29	3,048
Personal	0	675	0	42	9	1,907
Social Ser.	0	1,845	9	36	17	1,469
Work/Job	9	2,310	7	334	17	1,469
Education	0	882	6	17	58	2,719
Dialysis	34	1,474	0	74	36	963
Total	90	9,051	27	731	166	11,575

ACCESSIBILITY



	Celina	McKinney	Melissa	Princeton	Prosper	Total
Ambulatory	90	8,366	25	648	204	9,333
Wheelchair		725	2	91	4	822
Total	90	9,091	27	739	208	10,155

FRISCO ON-DEMAND SERVICE

SERVICE HOURS

- Monday – Friday
- 6 a.m. – 6 p.m.

FARES

- Frisco-to-Frisco: \$2 Cash Fare
- Frisco-to-Outside Frisco: \$3 Cash Fare
- Half Fare Available (Must Qualify)

ELIGIBILITY

- Frisco Residents
- Age 65+
- Disabled
- Medical Trips

RESERVATIONS

- 24 Hours in Advance
- Up to Seven Days in Advance

SERVICE AREA

- Trips within Frisco
- Trips Originating in Frisco to Allen and McKinney; Return Trips

FLEET

- Two Cutaways
- 1 Spare Required



CONTRACT SERVICES

FRISCO SERVICE COSTS



	Total Service Hours	Rate	Annual Cost
Budget	6,144 Hours	\$48	\$325,000
Actual	6,120 Hours	\$41.35	\$268,294
Savings	24 Hours	\$6.65	\$56,706

CONTRACT HOURS



Cost as Outlined in Contract = \$48 / Service Hour
Actual Invoiced Cost = \$41.35 / Service Hour
Total Annual Cost = \$268,294

Note: Fuel is charged separate from the \$48 hourly rate and is charged at \$5.60 per service hour, but is reconciled and invoiced at actual cost.

ON-DEMAND CONTRACT STRUCTURE

Operations & Maintenance Expenses

- Operator Hours
- Operator Cost
- Maintenance Cost

Operational Support Services

- Road Supervision
- Training
- Staff Support
- Call Center / Reservation Support

Program Support & Admin

- 20% Admin Cost
- Includes DCTA Admin and Management

Fuel

- Direct Pass Through Cost
- No Upcharge

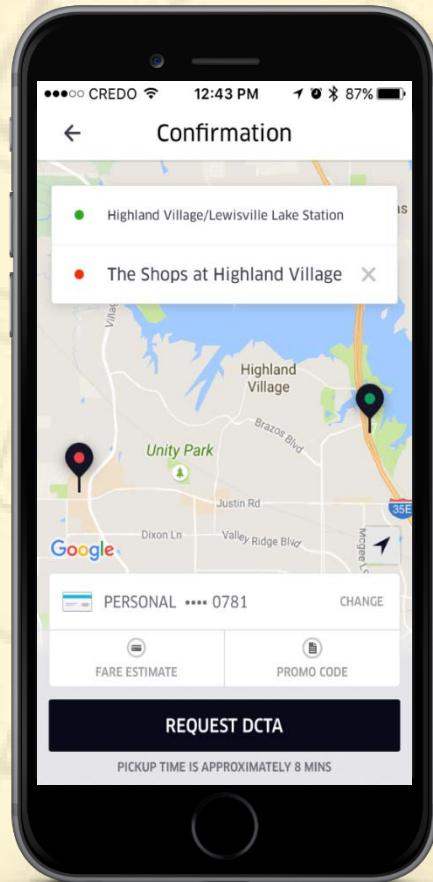
Vehicle Storage & Cleaning

- DCTA or UTD Provided (TBD)

Capital Replacement

- Ongoing Fleet Replacement
- Required of the UTD

TRANSIT ENHANCEMENTS SOLUTIONS



Compliments Traditional Transit

Leverage Partnerships with Uber/Lyft/Taxis

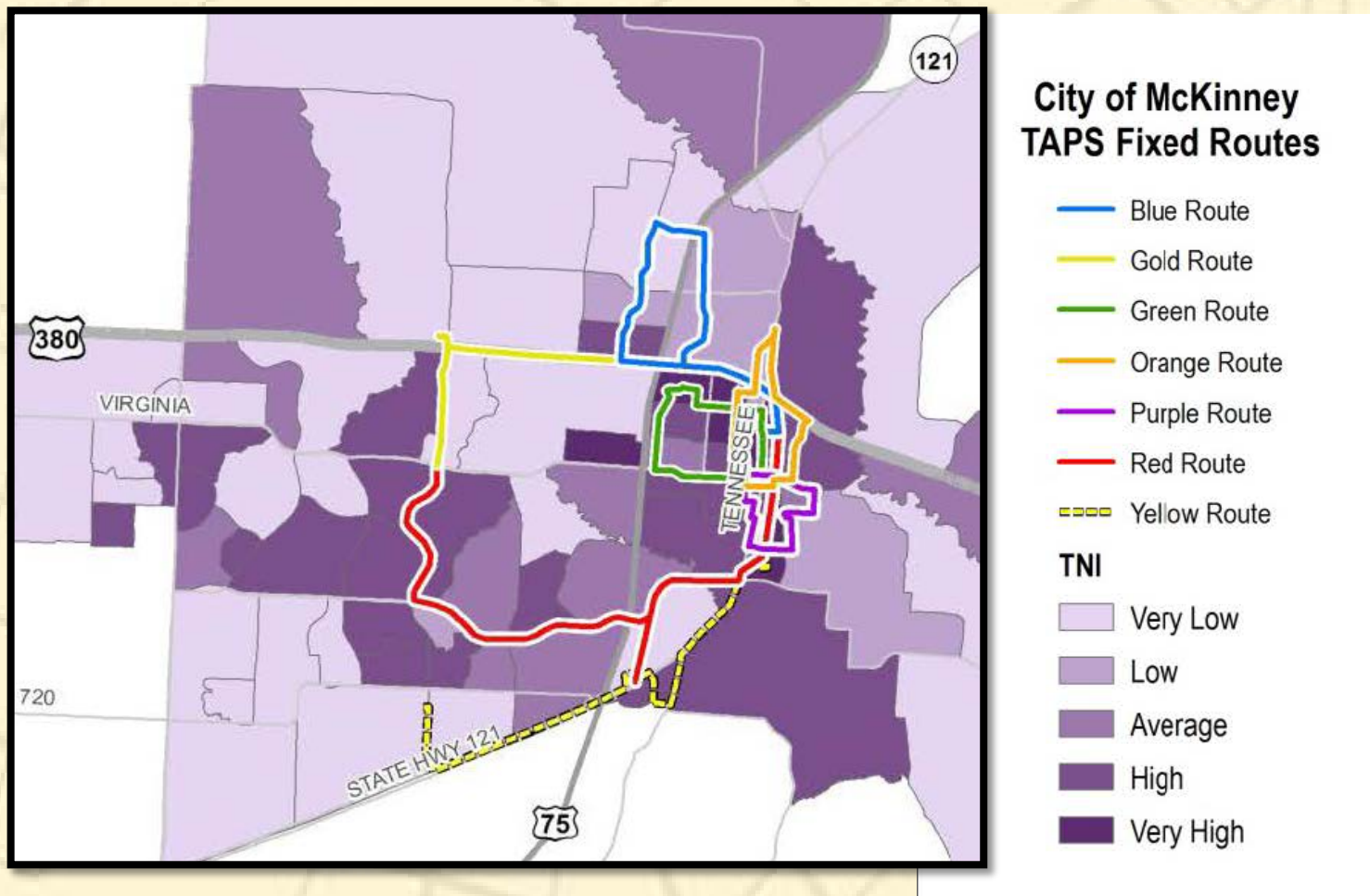
Cost Containment

Flexible, Convenient and Hassle-Free

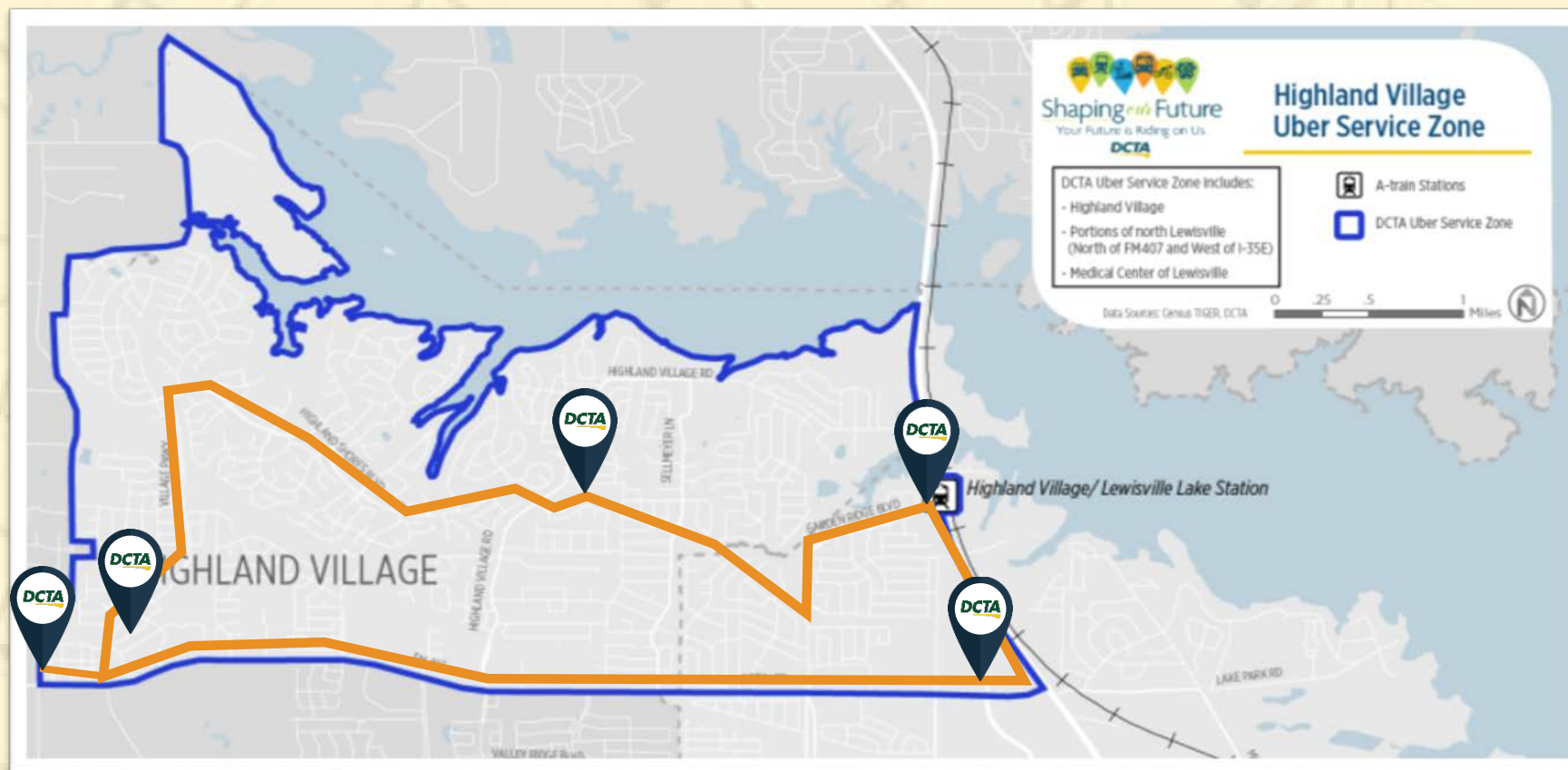
Innovative Technology

At a User's Fingertips

FROM FIXED ROUTE TO CIRCULATOR



COMMUNITY CIRCULATOR



SERVICE DEVELOPMENT

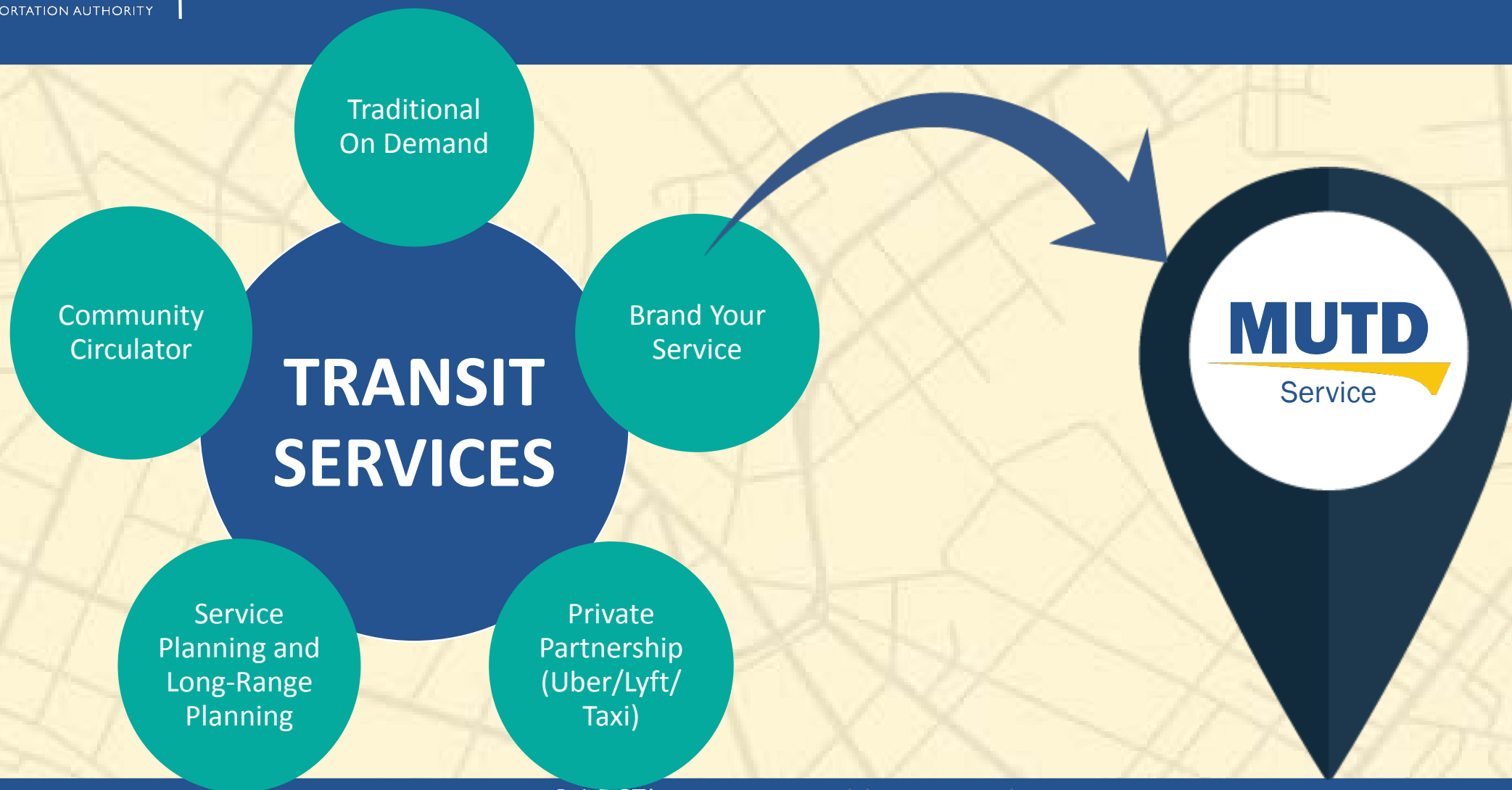
Identify
Your Target
Market

Define
Service
Parameters

Define
Budget

MUTD
Service

CUSTOMIZED PARTNERSHIP



YOUR COMMUNITY

We
LIVE
in Your
Community

We
UNDERSTAND
Your
Community

We
OPERATE
in Your
Community

DCTA VALUE PROPOSITION



DCTA is a well-established, efficiently-operated, and fiscally-responsible transit authority



DCTA understands suburban communities and high-growth areas



DCTA is leading the country with innovative on-demand transit solutions



DCTA offers flexible and customized approaches to transit

YOUR PARTNER IN TRANSIT



TRUSTED PARTNER

SOLUTIONS PROVIDER

SOURCE FOR TRANSIT EXPERTISE

