

# City of McKinney's Comprehensive Plan and Future Roadways

City Council / McKinney Independent School District Joint Meeting  
February 27, 2017



# What is a Comprehensive Plan?

## What

- A Comprehensive Plan is a statement of the community's vision now and for the future.
- Typically comprised of a number of interrelated elements such as land use, transportation, utilities, public services, socio-economic, preservation, and open space elements.

## Why

- Provides direction for the City's future growth and development
- Sets goals for many aspects of civic operations

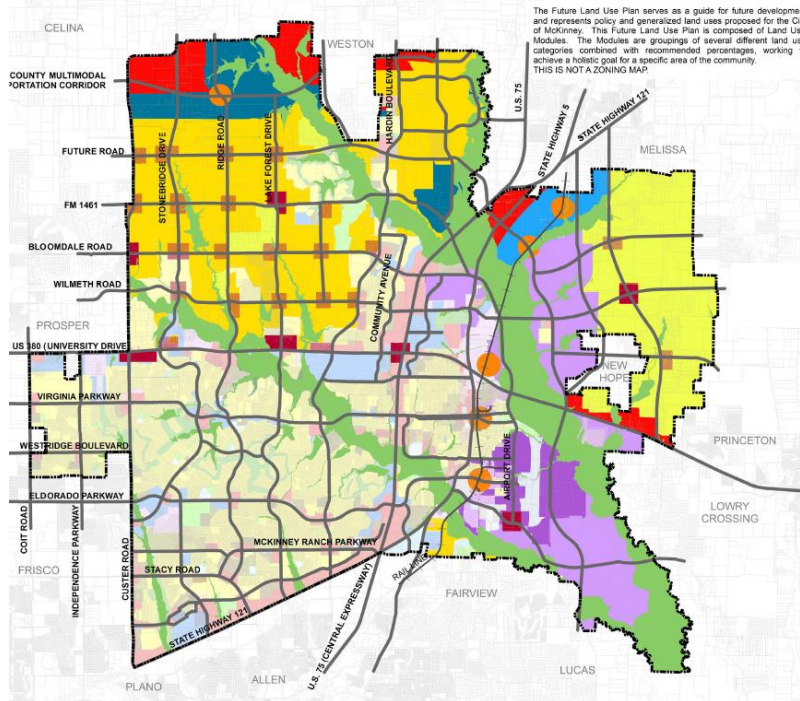
# How is a Comprehensive Plan Used?

- Used to coordinate and guide the establishment of development regulations.
- Used to provide a basis for future zoning decisions.
- Helps to guide public investments in transportation and other infrastructure improvements that aide in guiding future development.

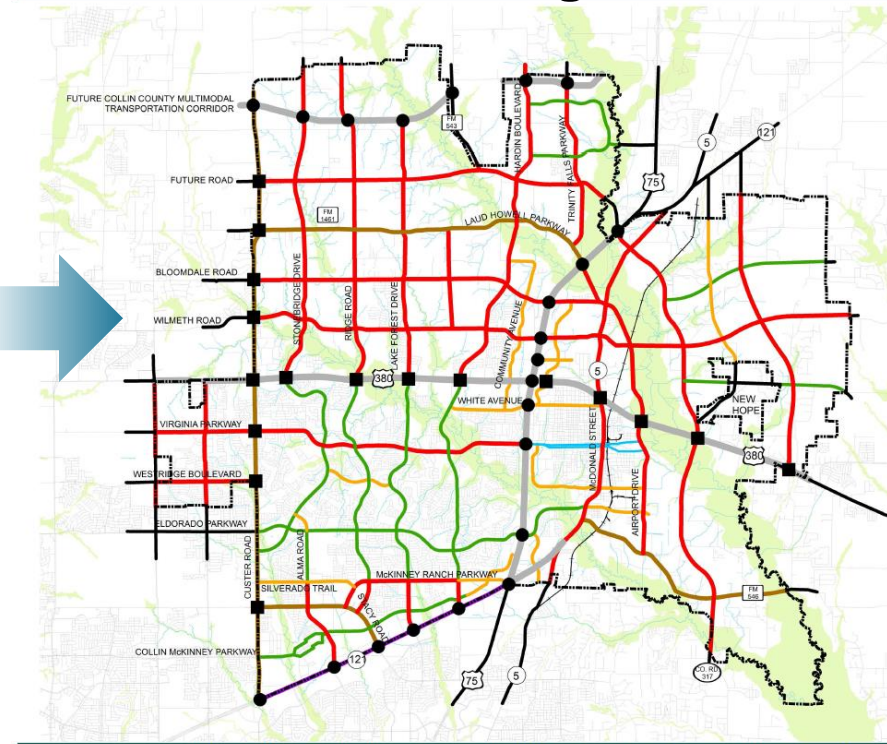


# Two Major Components

## 2004 Future Land Use Plan



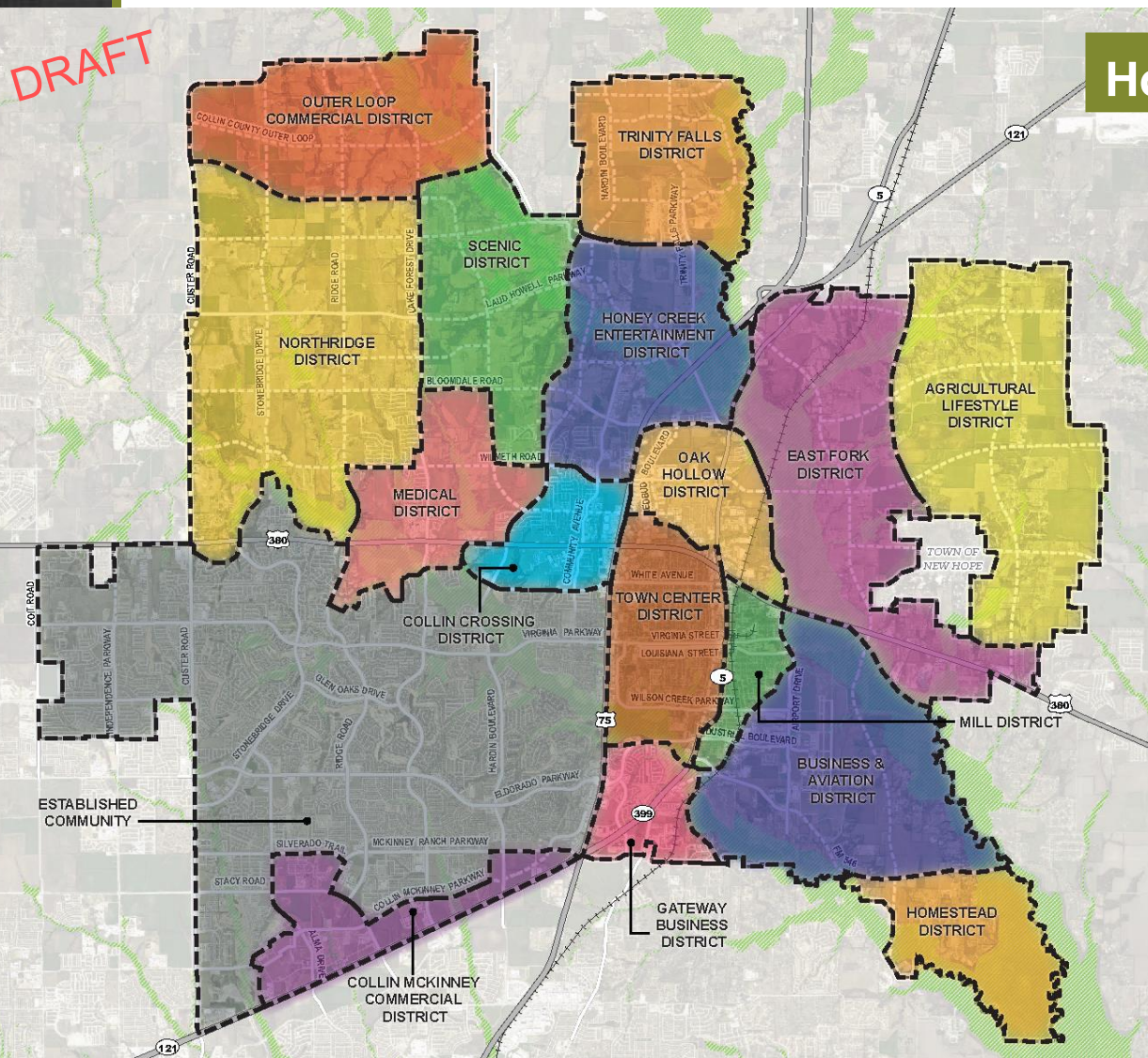
## 2004 Master Thoroughfare Plan





# Planning for Land Use: Preferred Scenario

DRAFT

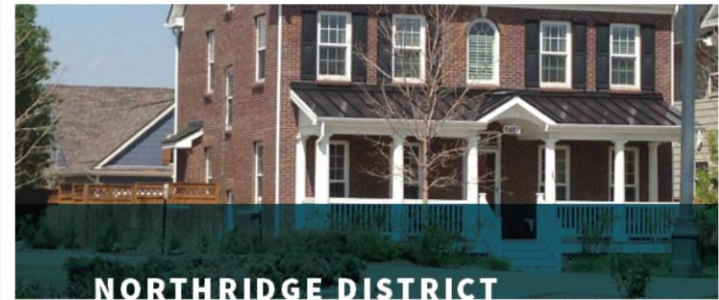


## How it works: *the Placetypes*

	Rural Living (RL)		Urban Residential (UR)
	Estate Residential (ER)		Entertainment Center (EC)
	Suburban Residential (SR)		Transit Ready Development (TRD)
	Neighborhood Commercial (NC)		Historic Town Center (HTC)
	Commercial Center (CC)		Professional Campus (PC)
	Mixed-Use Center (MU)		Aviation (AV)
	Employment Mix (EM)		Manufacturing & Warehouse (MW)

# Districts in Detail

- Intent Statement
- Description
- Identity and Brand
- Economic & Market Support
  - *Psychographics*
  - *Market Analysis*
- Strategic Direction
  - *Development Pattern*
  - *Identity, Amenities and Infrastructure*
  - *Anticipated Public Investments & Initiatives*
  - *Decision Making Criteria*



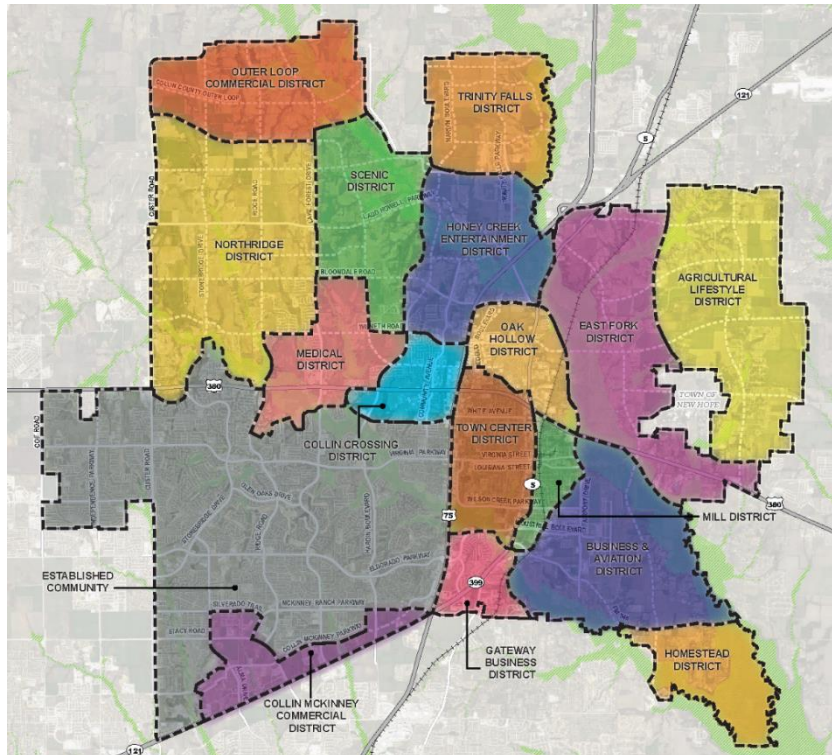
Anchored by an NRCS lake, new neighborhood developments in the Northridge District continue McKinney's high quality of life and housing choices.



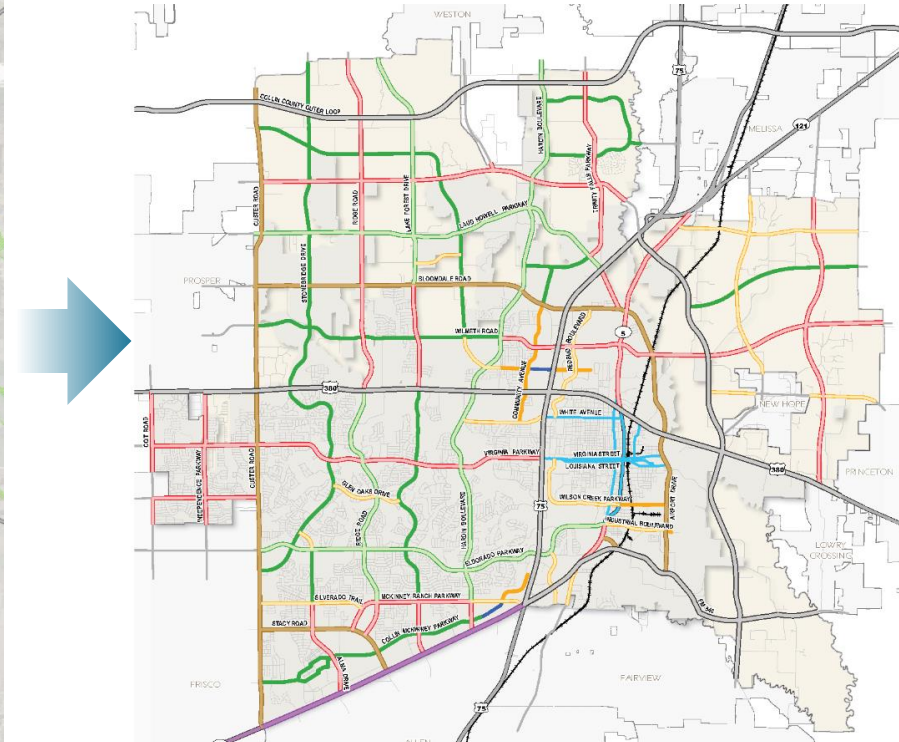


# ONE McKinney 2040

## DRAFT Preferred Scenario

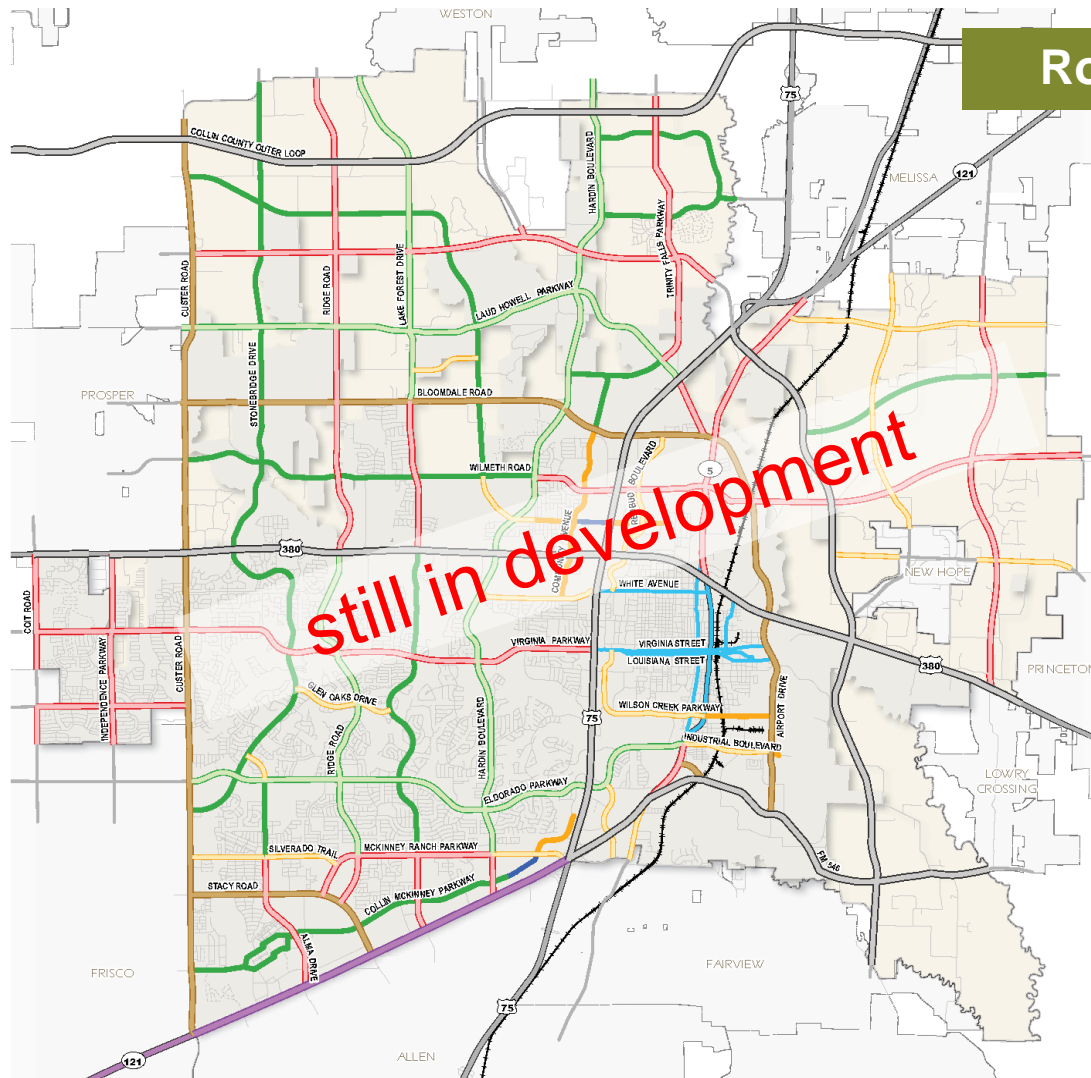


## DRAFT Thoroughfare Plan (Aug. 2016)



# Planning for Future Roadways

## ONE McKinney 2040: Draft MTP



### Roadway Classifications

Draft Thoroughfare Plan 2016

- Major Regional Highway / Multi-Modal
- Tollway
- Principal Arterial - 130' ROW (6 Lanes)
- Major Arterial (6 Lanes)
- Greenway Arterial (6 Lanes)
- Greenway Arterial (4 Lanes)
- Minor Arterial (4 Lanes Divided)
- Minor Arterial (4 Lanes Undivided)
- Minor Arterial (3 Lanes)
- Town Thoroughfare
- Road By Others

Draft from  
August 2016

For more information about the draft MTP visit: <http://www.mckinneytexas.org/1703/Master-Thoroughfare-Plan>



# Comprehensive Plan: Next Steps

- Engage with regional partners on potential impacts of regional mobility choices on the development of the McKinney MTP
- Refinements and evaluation of draft MTP
- Continued Public Outreach
- Develop Draft Plan Elements



## Stay in the Know



[www.onemckinney2040.com](http://www.onemckinney2040.com)



972.547.7400



ATTN: Planning Department  
221 N. Tennessee Street  
McKinney, TX 75069



[info@onemckinney2040.com](mailto:info@onemckinney2040.com)



[facebook.com/ONEMckinney2040](https://facebook.com/ONEMckinney2040)



[@PlanMcKinney](https://twitter.com/PlanMcKinney) | [@CityOfMcKinney](https://twitter.com/CityOfMcKinney)



[linkedin.com/company/one-mckinney-2040](https://linkedin.com/company/one-mckinney-2040)

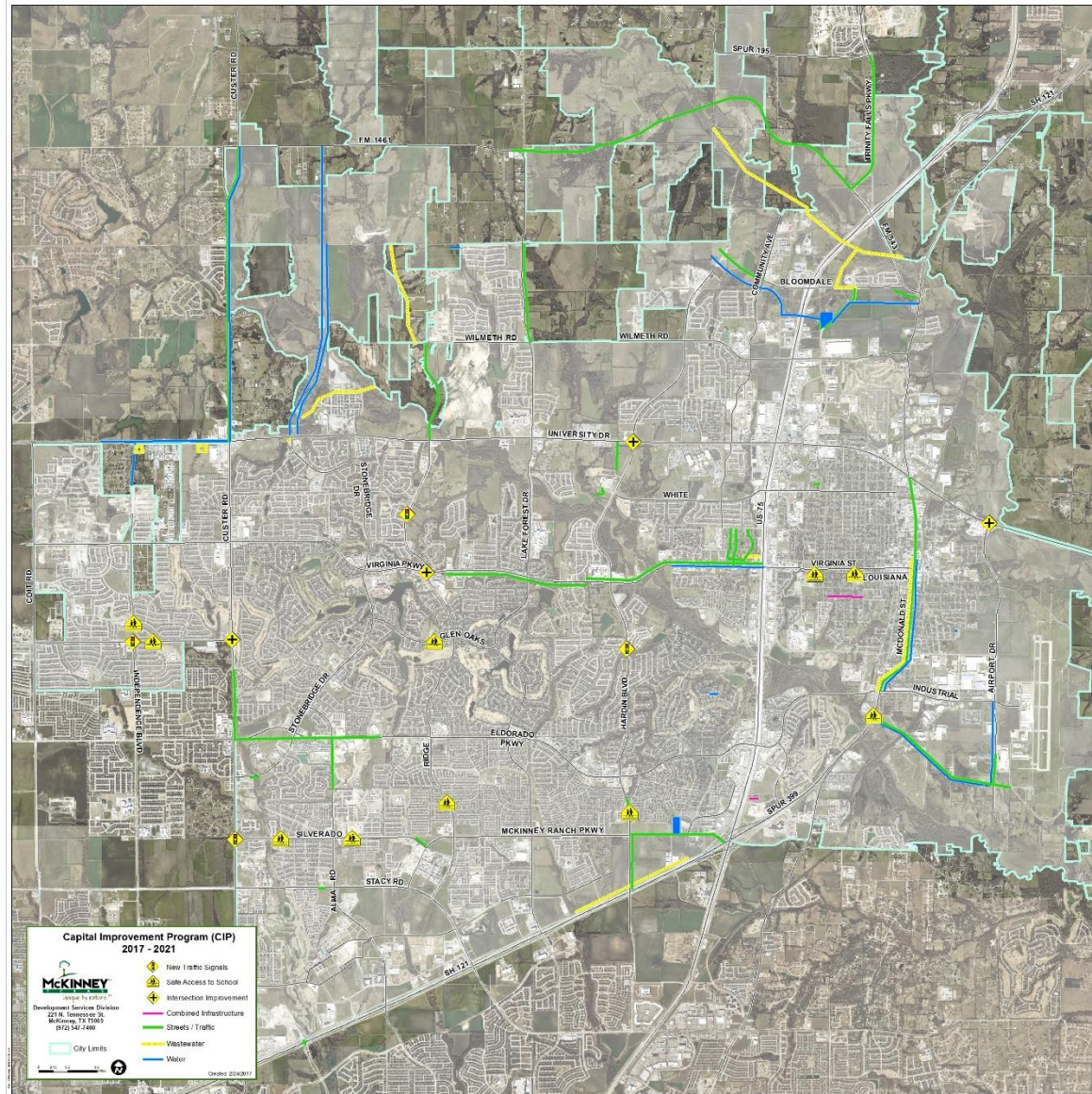
# City of McKinney's 5-Year Capital Improvements Program

City Council / McKinney Independent School District Joint Meeting  
February 27, 2017



# McKinney 5-Year CIP

## Infrastructure Related Projects





# McKinney 5-Year CIP

## Infrastructure Related Projects

- Streets – \$125,000,000
- Traffic - \$9,700,000
- Water - \$77,200,000
- Wastewater - \$53,100,000
- Total - \$265,000,000

Source of funds include:

- General Fund
- City Bond
- Revenue Bonds
- Collin County Bonds
- Roadway Impact Fees
- Utility Impact Fees
- Regional Toll Revenues
- Developer Contributions