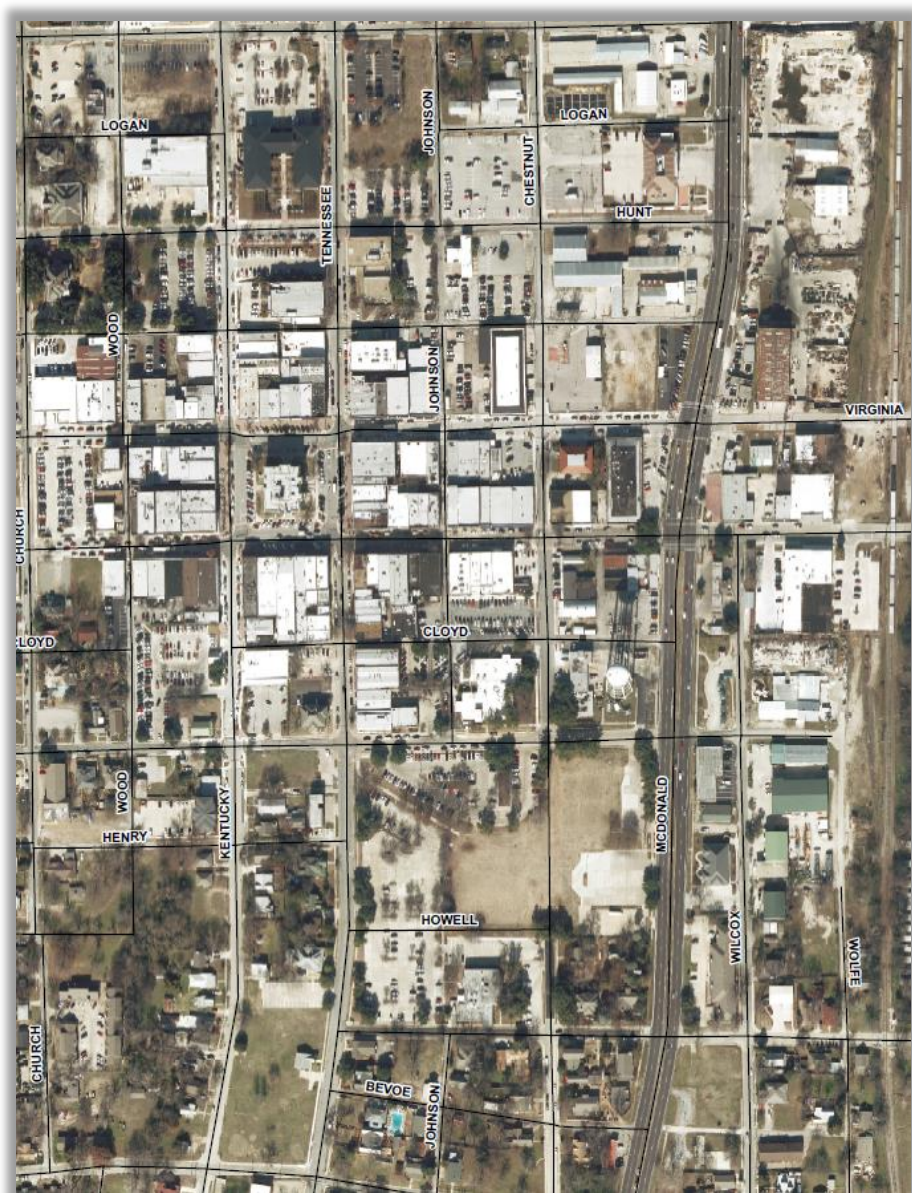


Downtown Parking

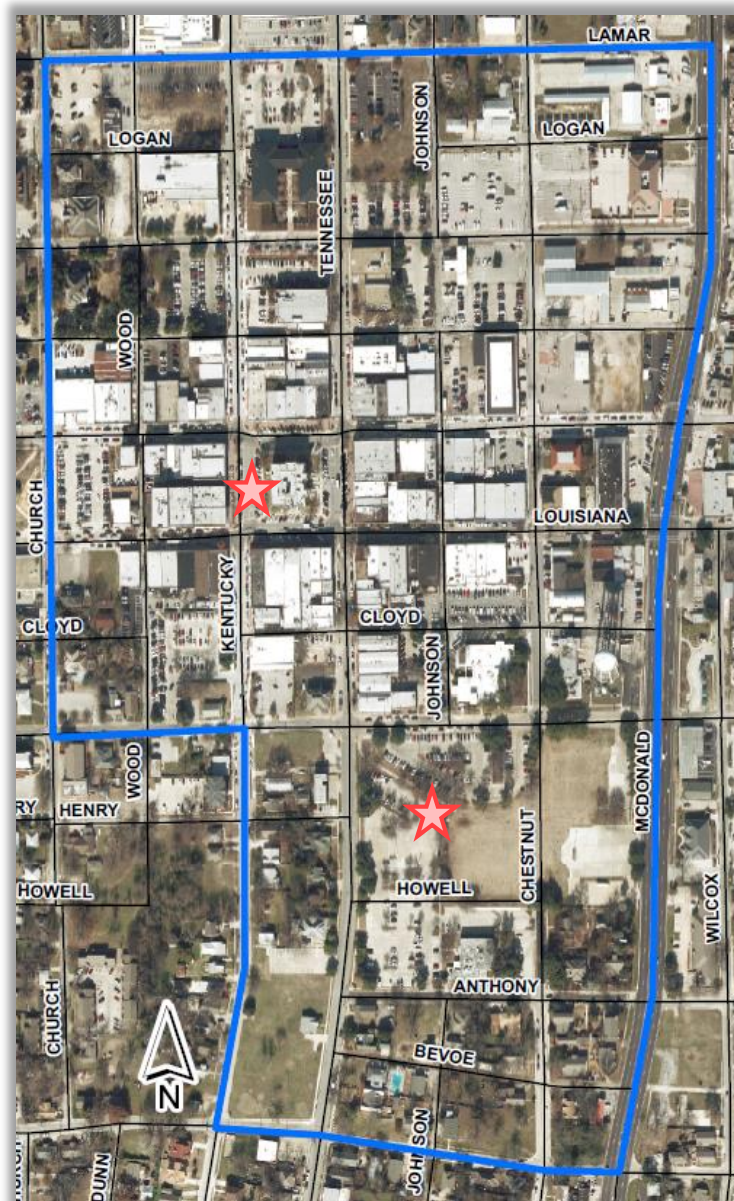
April 3, 2017 City Council Work Session





Background and Context

- The shortage of public parking spaces downtown has been discussed publicly for several years.
- Most recently, these discussions were intensified by public discussions regarding:
 - structured public parking facilities; and
 - the removal of parking spaces from the “9-Acre” site for the mixed-use development that’s currently under construction.
- The Downtown Parking Committee and City Staff have evaluated and are working to implement a number of short and long-term public parking solutions.
- ***Recently, downtown property owners have requested the ability to construct gravel parking lots to help ease the demand on downtown public parking.***
- Current development regulations prohibit the construction of a gravel parking lot within the City of McKinney.

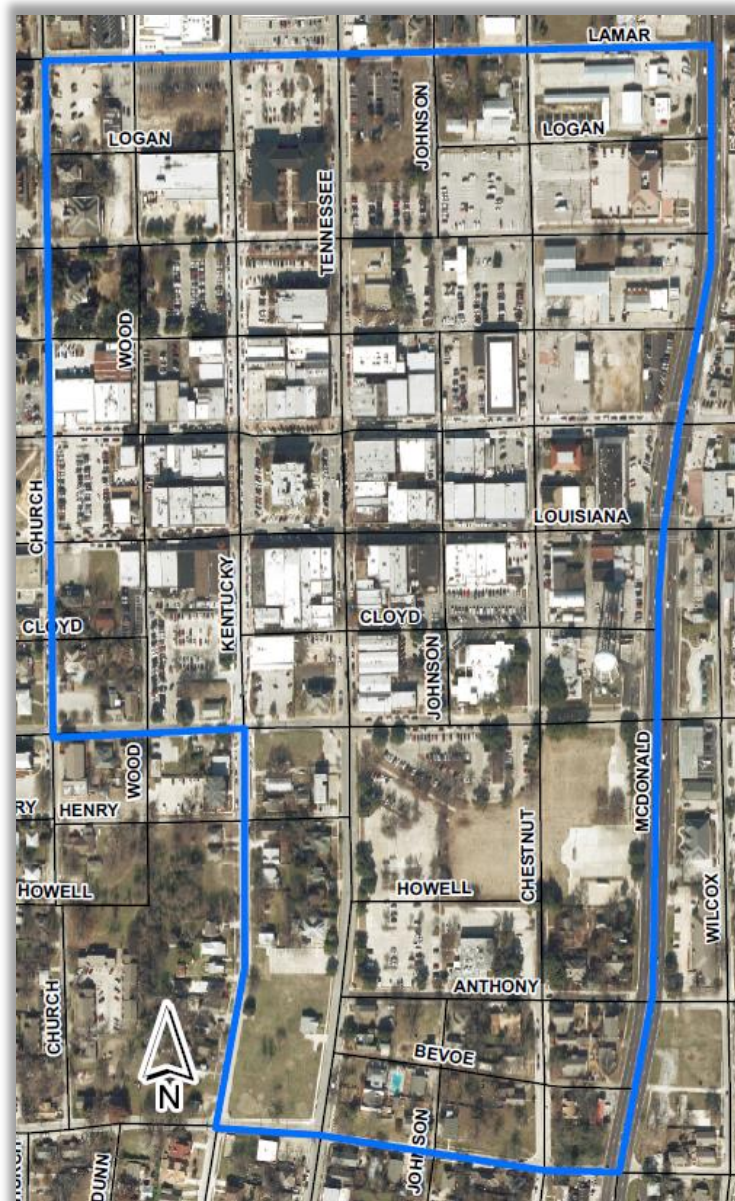


Potential Framework for Gravel Parking Lots

- Permanent design requirements would be temporarily suspended.
- The suspended design requirements would be limited to a period of 18-24 months during which permit requests must be submitted and approved. Gravel lots constructed during this time frame would be permitted to remain indefinitely.
- Gravel lots must be located within the area pictured left.
 - Generally bound by Lamar (north), McDonald (east), Standifer (south) and Church and Kentucky (west).
 - Boundaries were generally set to allow additional parking to be built within convenient walking distance of the “9-Acre site” and the *Downtown Square*.

Example of Gravel Parking Lot Downtown





Requested City Council Direction

In an effort to allow interested downtown property owners to assist with parking shortages downtown...

Would the City Council be supportive of allowing gravel parking lots to be constructed on privately owned property downtown for a limited period of time?

If so, what limitations (time, geographic location, etc.) would the City Council recommend applying?

Are there any design requirements that should not be temporarily suspended?