

Parks and Recreation Update

April 25, 2017



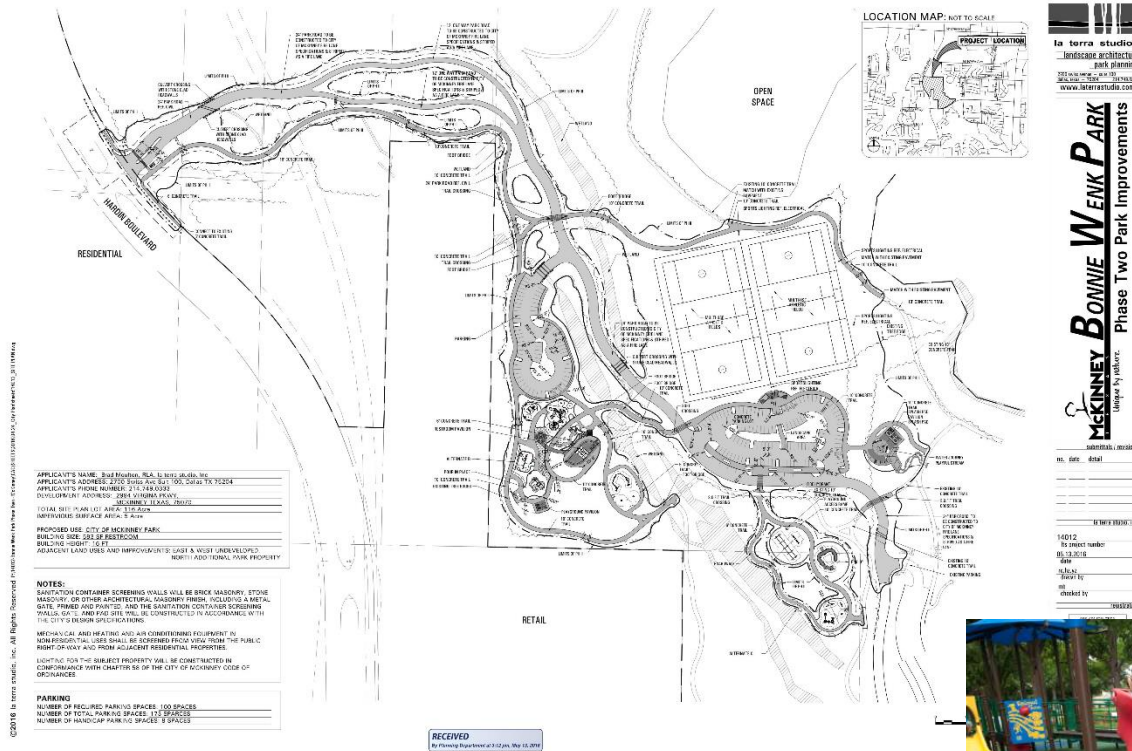
Parks and Open Space Projects

- **Bonnie Wenk Park Phase 2**
- **Scott Elementary School Park**
- **Gabe Nesbitt Tennis Center Expansion**
- **Goldstar Memorial**
- **Gray Branch Park Master Plan**
- **Parks, Recreation, Trails and Open Space Master Plan**
- **Wilson Creek Hike and Bike Trail**
- **Comegys Creek Hike and Bike Trail**
- **Rowlett Creek/121 Hike and Bike Trail**
- **SPCA Hike and Bike Trail**
- **Community Center Patio**
- **Finch Park Improvements**
- **Prestwyck Neighborhood School Park**
- **Parks Accessibility**



Parks and Open Space Projects

Bonnie Wenk Park Phase 2



- \$8,391,031 Budget
- Construction Begins April 2017
- Summer 2018 Completion



Parks and Open Space Projects

Scott Elementary School Park



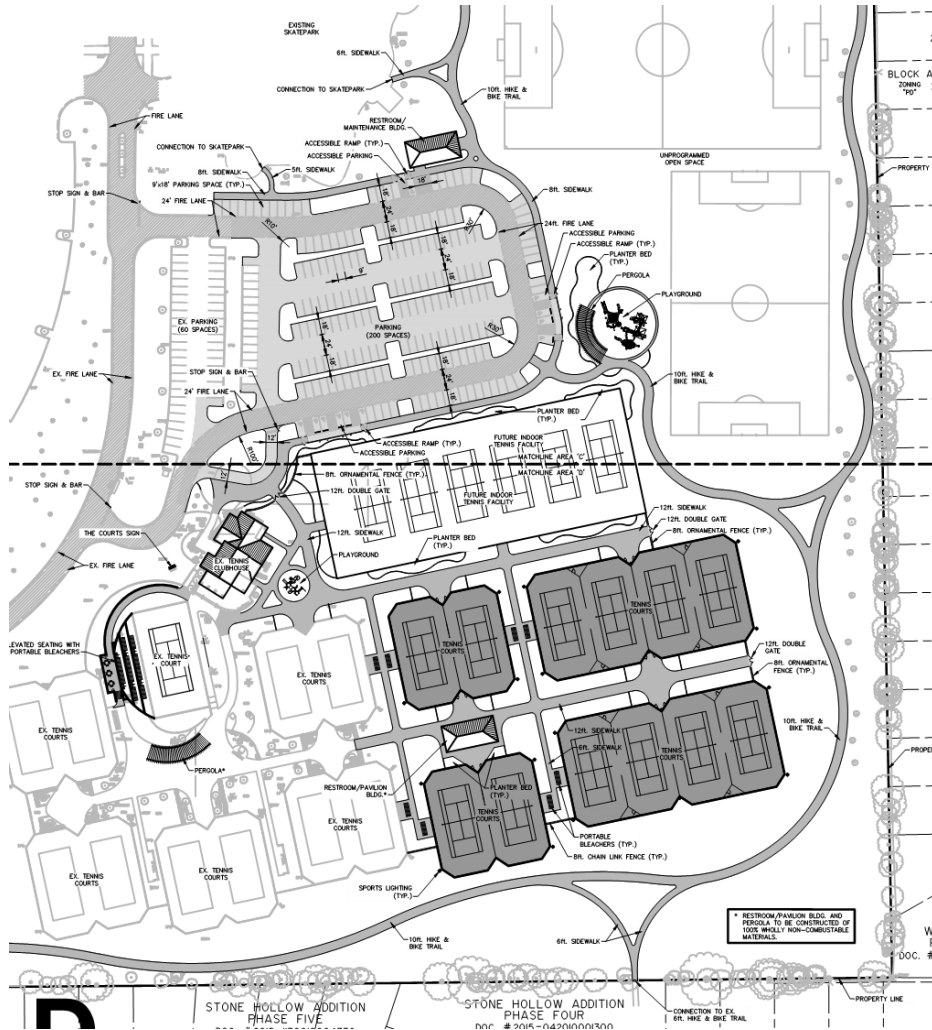
- \$2,425,000 Budget
- Design Development in progress
- Construction anticipated to begin spring 2018



Parks and Open Space Projects

Gabe Nesbitt Tennis Center Expansion

- \$7,000,000 Budget
- Design Completed
- Summer Bidding
- Construction anticipated to begin late summer



Parks and Open Space Projects

Goldstar Memorial



- \$ 145,000 Project Cost
- Construction begins June 2017
- October 2018 Completion



Parks and Open Space Projects

Gray Branch Master Plan



GRAY BRANCH
212 ACRES

Original - 100 acres - 2009
Additional - 50 acres - 2013
62 acres - 2016

- \$935,000 Budget
- Currently in contract negotiations for Design



Parks and Open Space Projects

Parks, Recreation, Open Space, Trails and Streetscape Master Plan



- \$280,000 Budget
- Council consideration in May



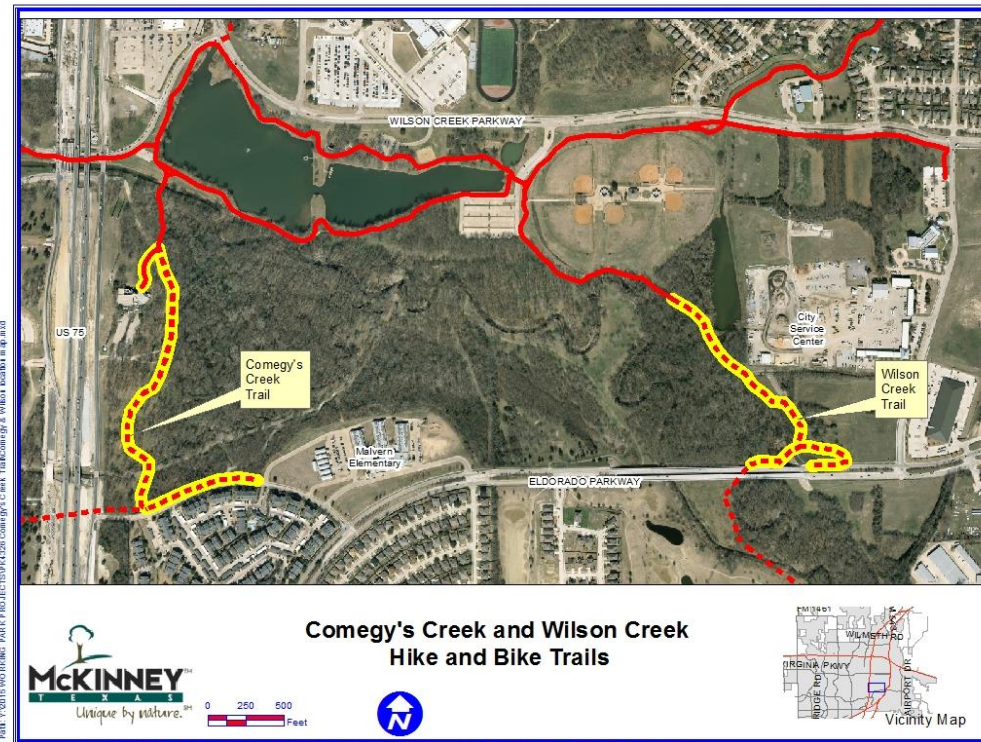
Hike & Bike Facilities

Comegys Creek Trail

- \$1,043,000 budget
- Construction to begin in May
- Completion October 2017

Wilson Creek Trail

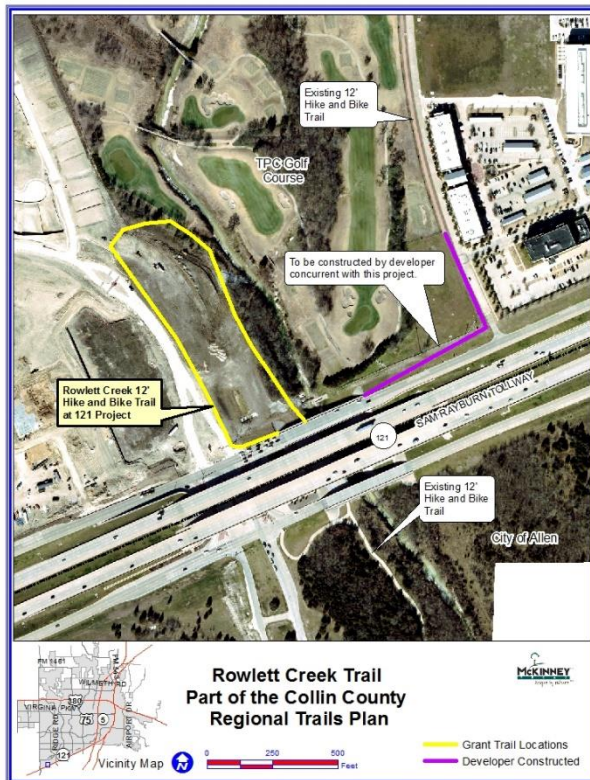
- \$708,150 budget
- Construction to begin in May
- Completion August 2017



Hike & Bike Facilities

Rowlett Creek/121 Trail

- \$270,000 budget
- Construction to begin in June
- Completion September 2017



Stacy Road/SPCA Trail

- \$240,000 budget
- Working on land acquisition



Park Facilities

Community Center Patio and Playground



- \$1,070,000 Project Cost
- Completed November 2016



Other Projects

- ADA Inspections and Improvements



- \$250,000 Annually

