



MCKINNEY PROSPER TRANSFER SEWER PIPELINE PROJECT

Background

Purpose and Goals:

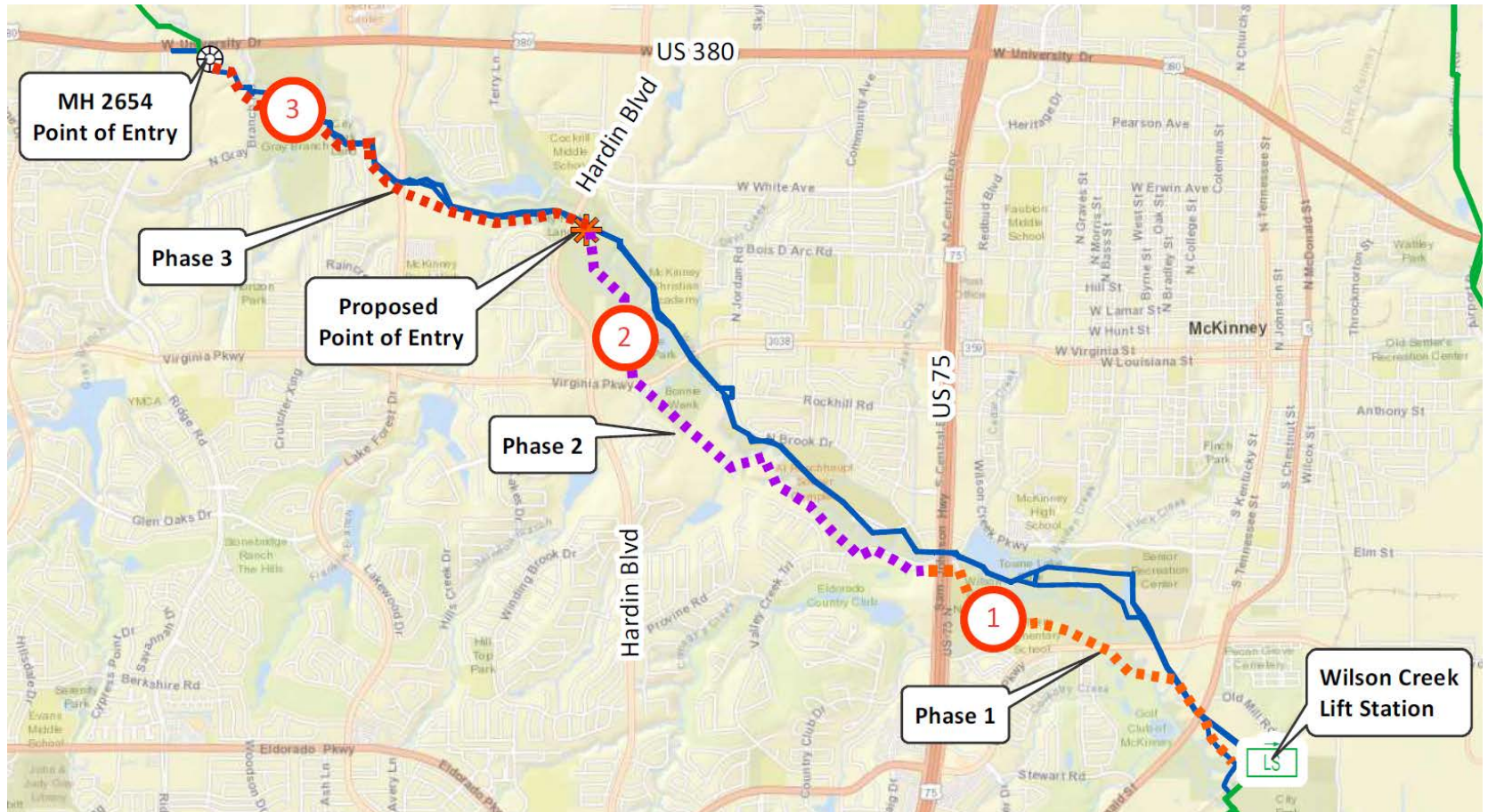
- Provide wastewater capacity for projected growth for McKinney and Prosper through build-out conditions
- Return capacity to McKinney's Wilson Creek Interceptors by accepting flow from two new points of entry at Hardin & Hwy. 380
- Serve long term needs to avoid future projects in this corridor
- Phasing project to minimize disruption of City Parks and trails in the sensitive corridor

Project Limits:

- Along Wilson Creek floodplain from Highway 380 to NTMWD's Wilson Creek Lift Station (located at landfill near Highway 5)

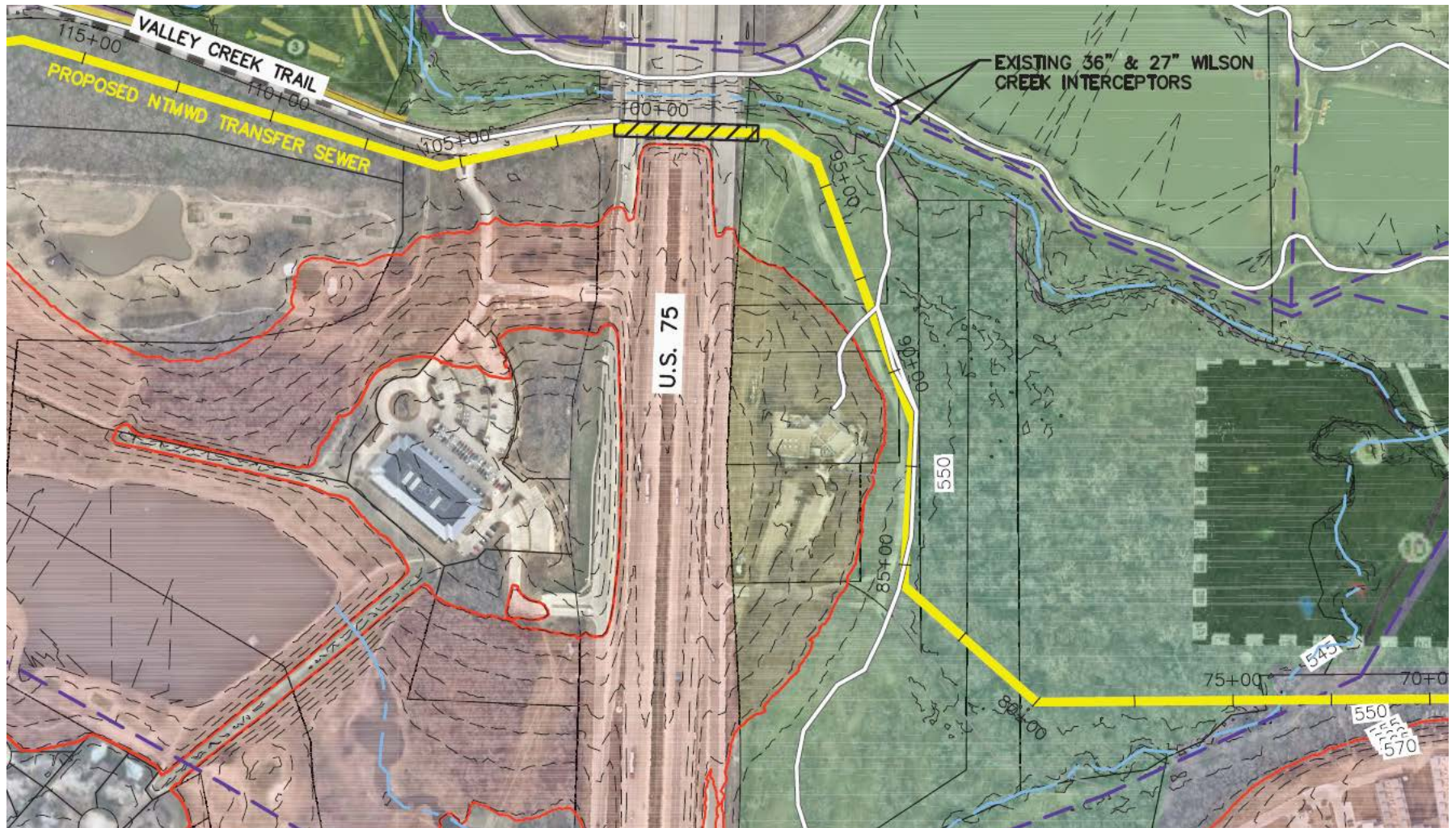


PROJECT MAP



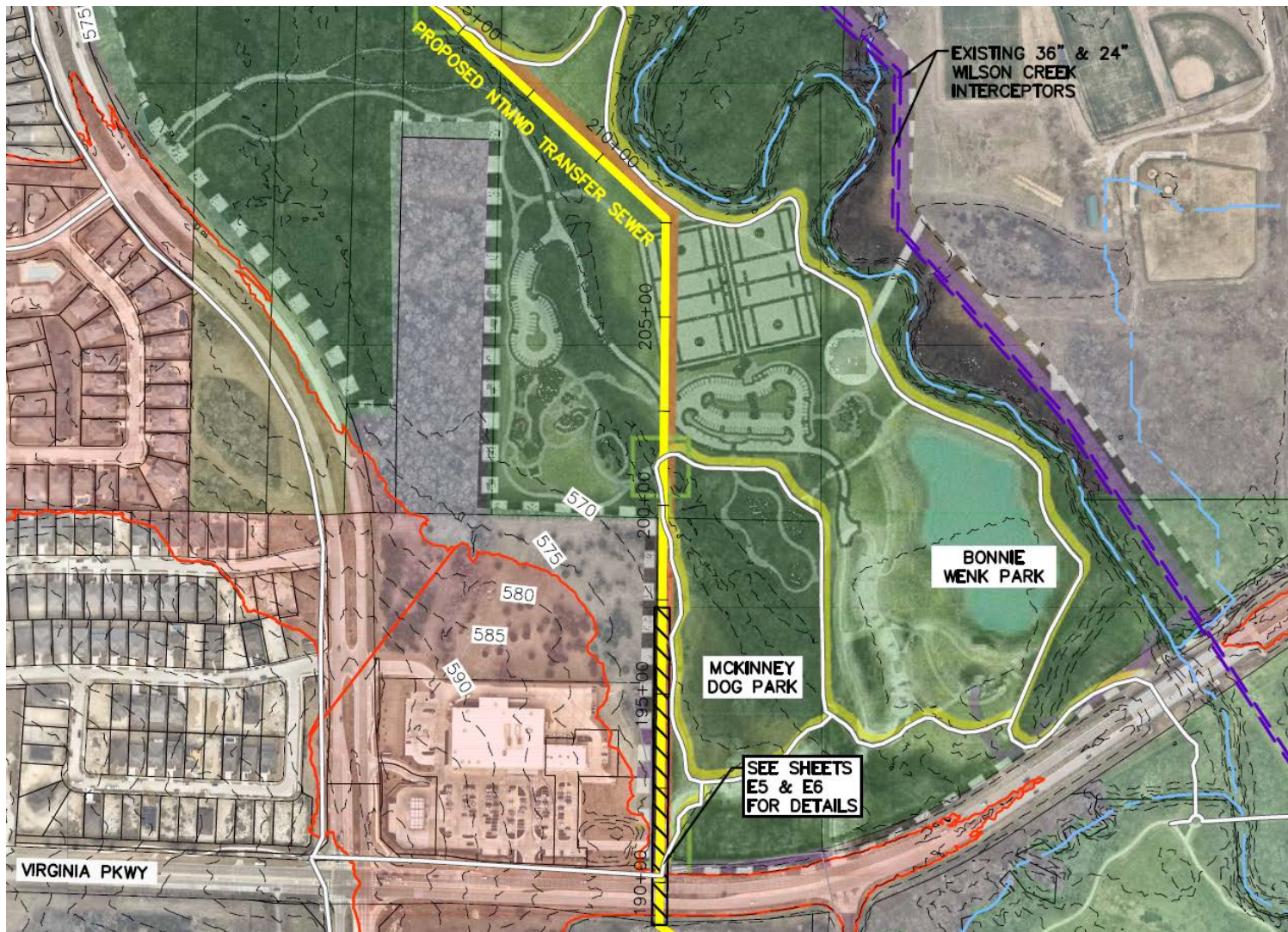


AREA 1: MCKINNEY COMMUNITY CENTER



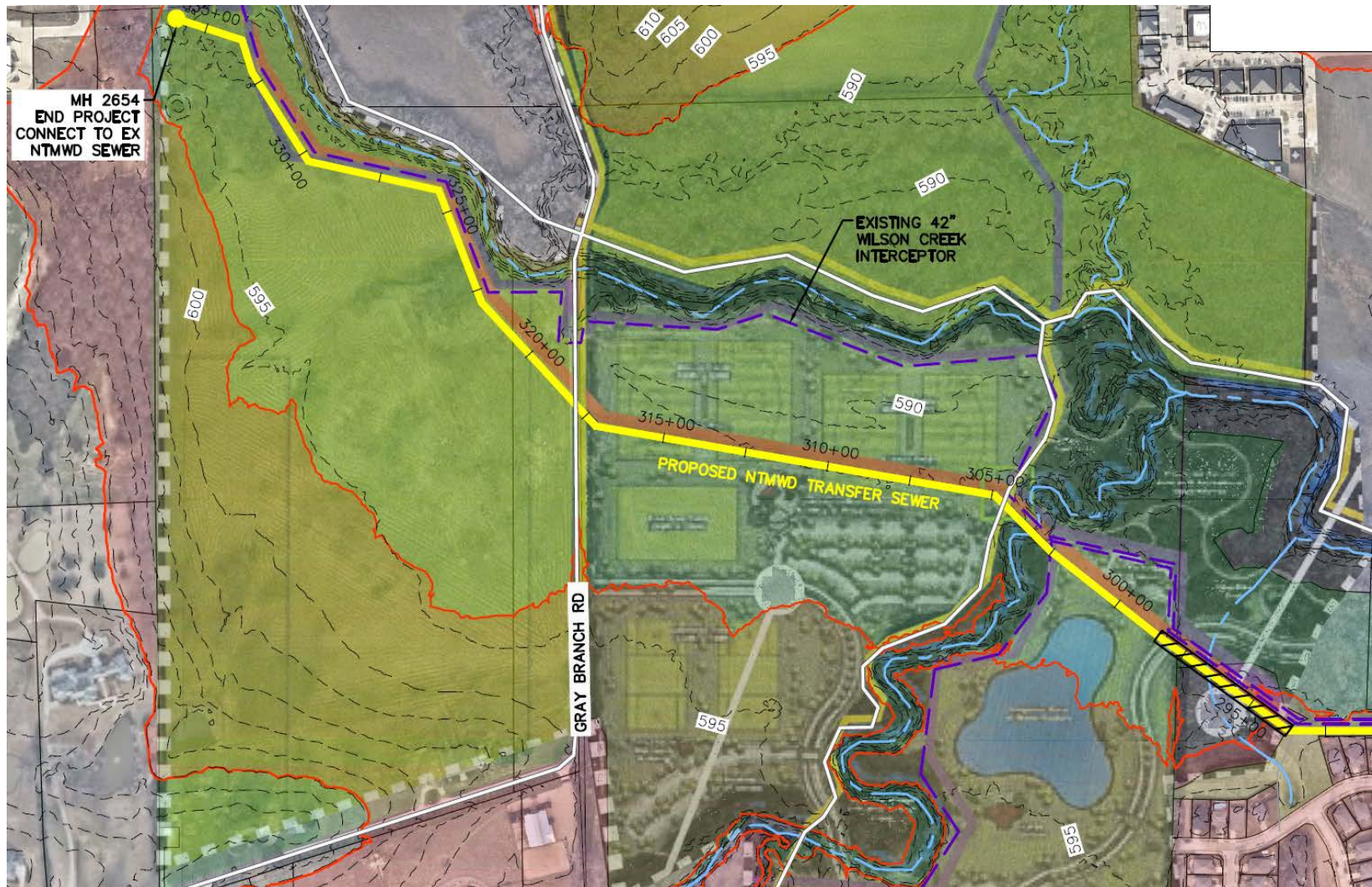


AREA 2: BONNIE WENK PARK





AREA 3: PROPOSED PARK SOUTH OF HWY 380





MCKINNEY PROSPER TRANSFER SEWER PIPELINE PROJECT

NTMWD Commitments:

- Identify social and environmentally sensitive areas and work with the City to select proper alignments.
- Consider trenchless construction methods when necessary to reduce impacts.
- Work with City to coordinate with public during detailed design
- Mitigate tree removal per City Standards
- Preserve tree line adjacent to the Community Center
- Coordinate with City on future park developments



MCKINNEY PROSPER TRANSFER SEWER PIPELINE PROJECT

Next Steps:

Fall 2018	Kick-off final design effort with Halff & Associates
Winter 2018	Begin field investigations and surveys along alignment
Spring 2019	Review Phase 1 preliminary alignments with City
Summer 2019	Finalize Phase 1 alignment and begin easement acquisition
Fall 2019	Begin Phase 1 construction
Spring 2020	Begin Phase 2 construction
Winter 2020	Begin Phase 3 construction
Spring 2022	Complete construction