

NORTH FACADE MATERIAL PERCENTAGES	
MATERIAL	**PERCENTAGE OF FACADE
*CURTAIN WALL	10%
INTEGRAL COLOR PLASTER	6%
CONCRETE TILT PANEL	75%
METAL SCREENING PANEL	9%

*All glazing to have a maximum reflectivity of 27%
**Chart does not include punched window/storefront calculations, only curtainwall.

The project is seeking the following variances from the Planning and Zoning Commission:

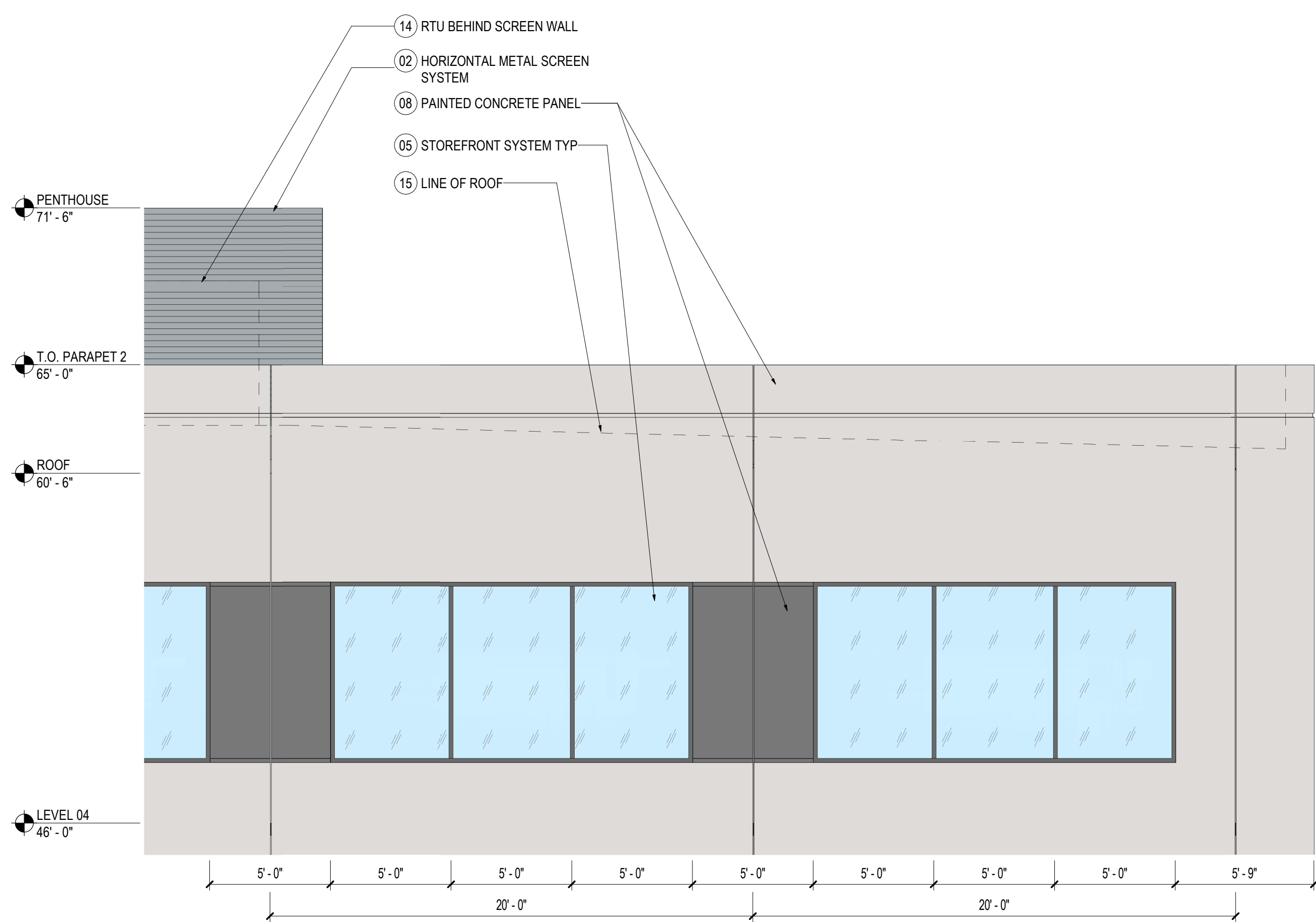
1. Exterior Finishing Materials:
 - a. To have less than the required 25% masonry for buildings taller than three stories in height
2. Building Massing:
 - a. To have fewer than the required facade offsets on building elevations 50 feet or longer horizontally.



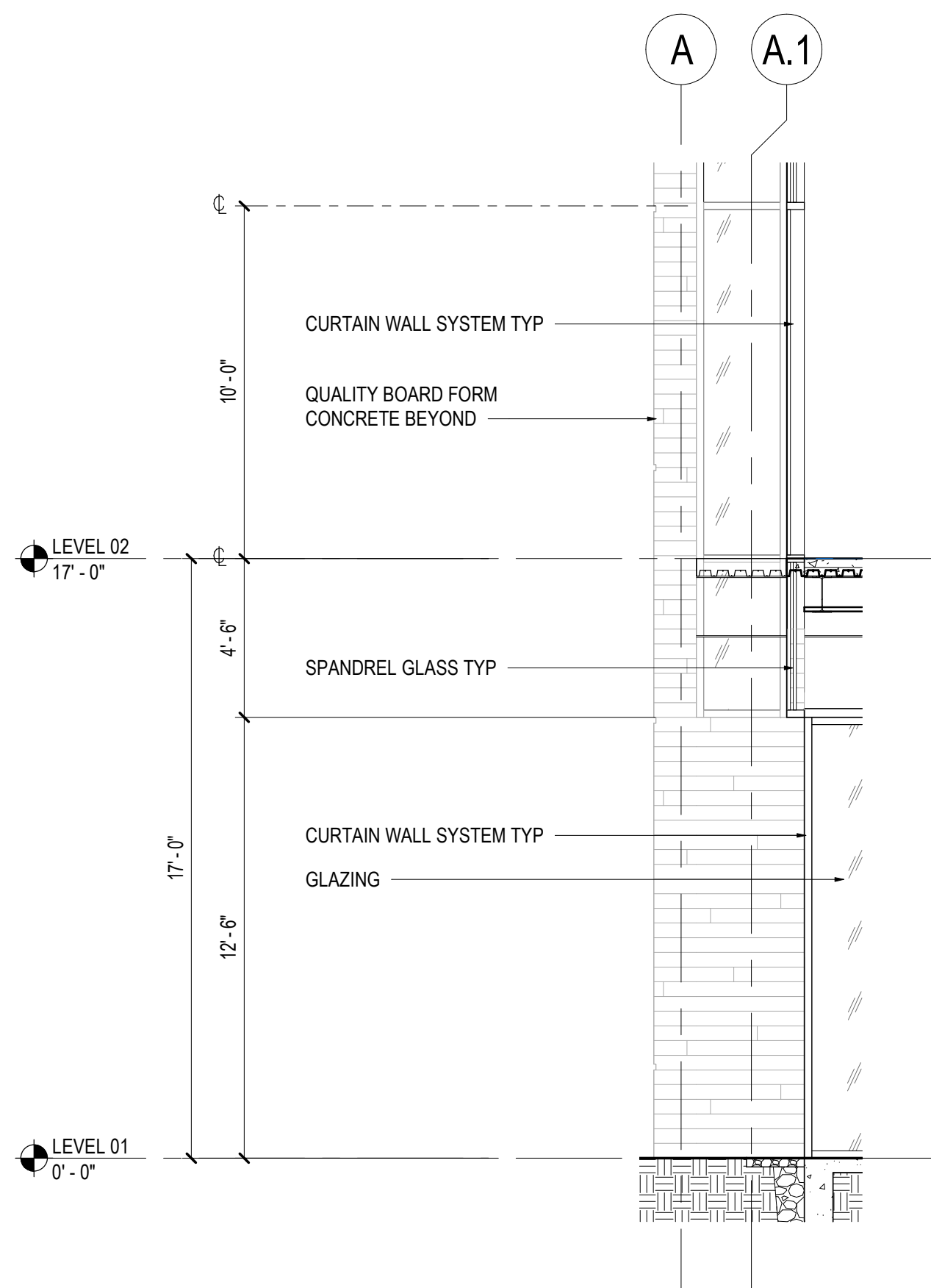
SOUTH FACADE MATERIAL PERCENTAGES	
MATERIAL	**PERCENTAGE OF FACADE
CONCRETE TILT PANEL	93%
METAL SCREENING PANEL	7%

*All glazing to have a maximum reflectivity of 27%
**Chart does not include punched window/storefront calculations, only curtainwall.

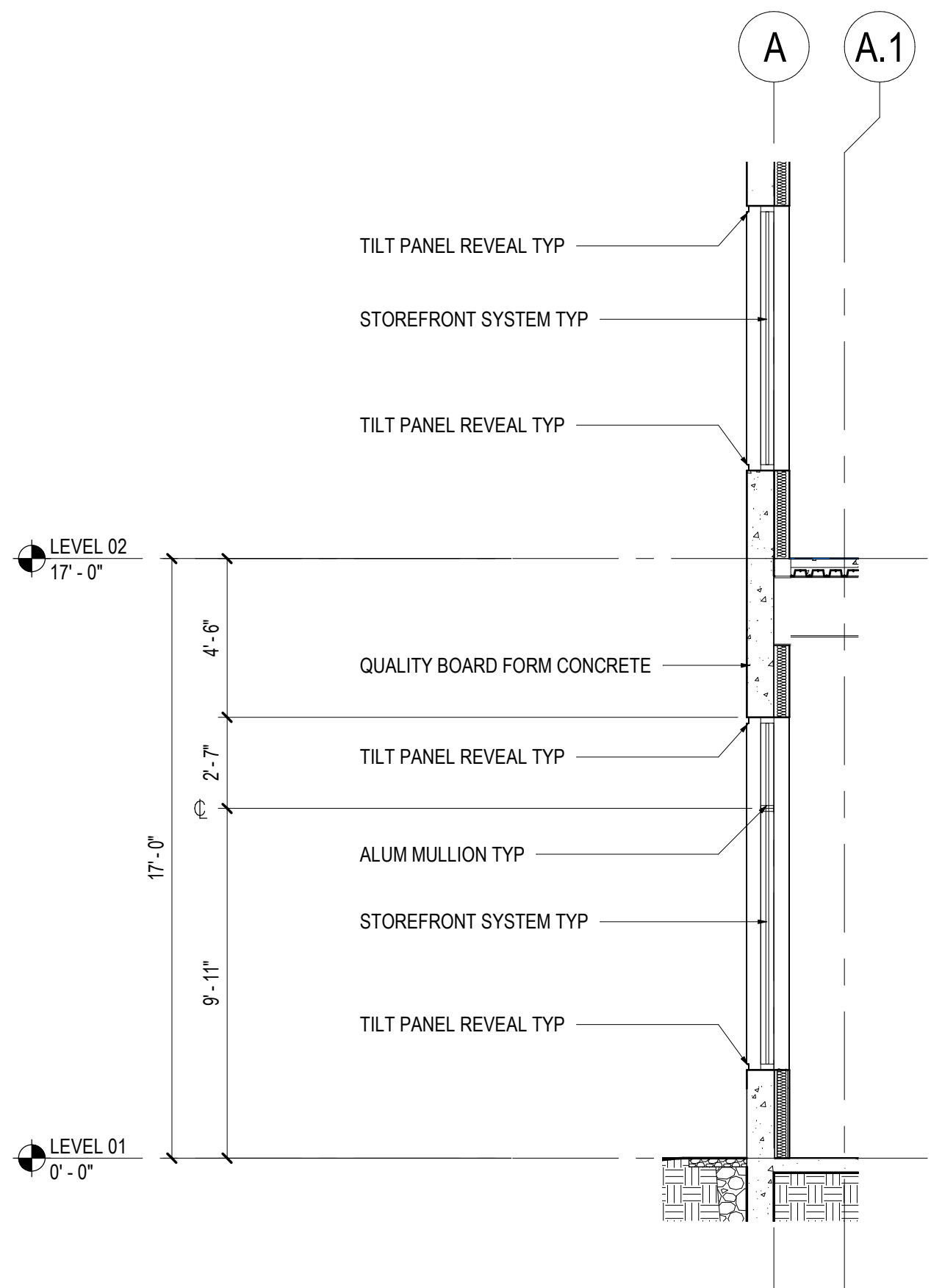




05 ROOFTOP SCREENING
SCALE: 1/4" = 1'-0"



04 CURTAINWALL DETAIL *All glazing to have a maximum reflectivity of 27%
SCALE: 1/4" = 1'-0"



03 STOREFRONT DETAIL *All glazing to have a maximum reflectivity of 27%
SCALE: 1/4" = 1'-0"

The project is seeking the following variances from the Planning and Zoning Commission:

1. Exterior Finishing Materials:
 - a. To have less than the required 25% masonry for buildings taller than three stories in height
2. Building Massing:
 - a. To have fewer than the required facade offsets on building elevations 50 feet or longer horizontally.

WEST FACADE MATERIAL PERCENTAGES	
MATERIAL	**PERCENTAGE OF FACADE
*CURTAIN WALL	19%
INTEGRAL COLOR PLASTER	3%
CONCRETE TILT PANEL	75%
METAL SCREENING PANEL	3%

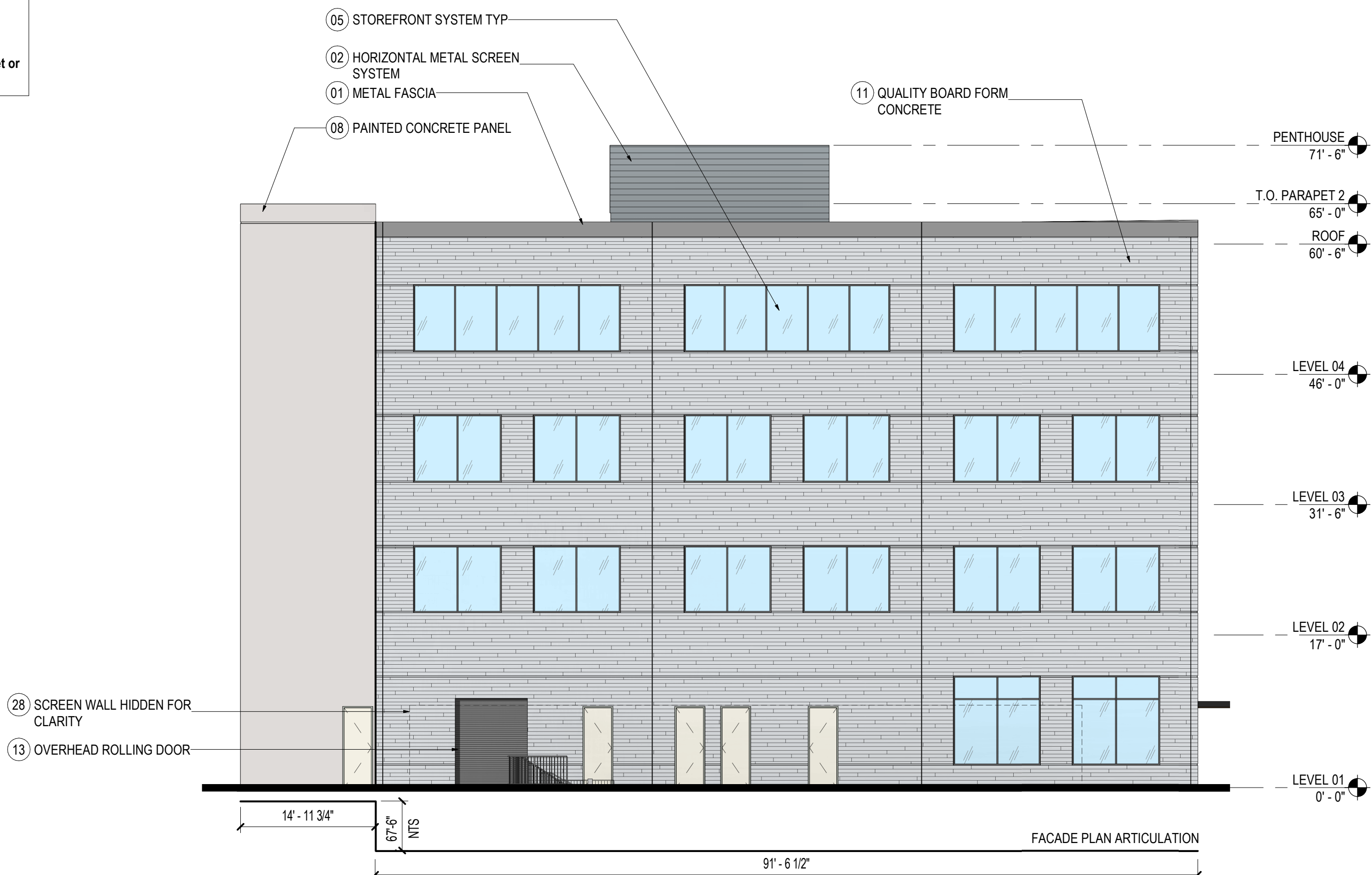
*All glazing to have a maximum reflectivity of 27%
**Chart does not include punched window/storefront calculations, only curtainwall.

EAST FACADE MATERIAL PERCENTAGES	
MATERIAL	**PERCENTAGE OF FACADE
CONCRETE TILT PANEL	98%
METAL SCREENING PANEL	2%

*All glazing to have a maximum reflectivity of 27%
**Chart does not include punched window/storefront calculations, only curtainwall.



02 WEST ELEVATION
SCALE: 3/32" = 1'-0"



01 EAST ELEVATION
SCALE: 3/32" = 1'-0"

