



# Parks, Recreation & Open Space Master Plan Update

*City Council Update*

August 3, 2021





# Systemwide Parks Master Plan

## Phase 1 Inventory & Needs



*Data Collection & Base Mapping*

*Inventory & Supply Analysis*

*Population Analysis & Demographic Trends*

*Demand Analysis & Needs Assessment*

*Dreams Campaign*

## Phase 2 Master Plan



*Priority Ranking Analysis*

*Action Plan*

*Implementation Plan*

*Preliminary Park Master Plan*

*Final Park Master Plan*



# 2017 Master Plan Recommendations Completed

## Master Planned

- ✓ North Park
- ✓ Wattley Park
- ✓ Towne Lake Park
- ✓ EA Randles Park
- ✓ Winniford Park



## Under Design

- ✓ Mary Will Craig
- ✓ Murphy

## Under Construction

- ✓ Finch Park

## Completed

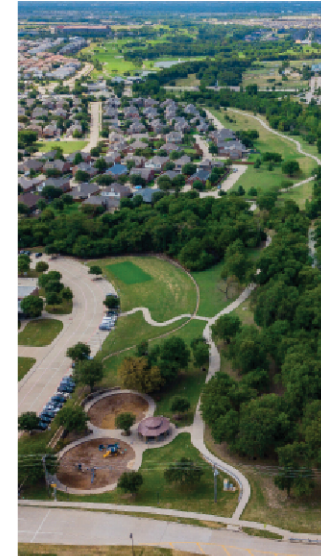
- ✓ Old Settler's Park
- ✓ Cottonwood Park







## Introduction



McKinney is widely recognized as an exceptional community in the DFW region, having been ranked as a “best place to live” both locally and nationally. The qualities that make McKinney attractive are what continue to draw new residents, visitors and businesses there today. These qualities include beautiful tree-lined roadways, distinct residential neighborhoods, outstanding educational opportunities, diverse business establishments, a vibrant historic downtown, and an exceptional parks systems – one of the key components of McKinney’s “Unique by Nature” brand.

Unique by Nature speaks to McKinney’s inherent uniqueness and sense of place. It also speaks to the City’s vast and beautiful parks system – offering lakes, streams, greenbelts, forests, sports, nature, conservation, and inspiration. As McKinney grows and diversifies, the parks system will continue to be a treasure for its citizens and visitors. In short, its magnificent resources will highlight McKinney’s quality of life for decades to come.

### DESTINATION COMMUNITY

Within an hour of both downtown Dallas and Fort Worth, McKinney is a picturesque city with a small-town atmosphere. For many years McKinney has thrived off the regional activities associated with being part of the DFW Metroplex. Its southern charm, green spaces and comfortable pace belie the fact that McKinney is one of the choice cities in America.

While many factors combine to make McKinney a truly special place, it’s the people of McKinney who bring these qualities to life. A community spirit is evident in a friendly, safe and inviting city that holds strong ties to its roots and cultural heritage. Additionally, the City enjoys robust economic development and diverse recreational amenities that compliment and expand its touted destination.



\*INCLUDE



Neighborhood Park	Neighborhood Park
Gabe Nesbitt Community Park Community Park	Wattley Neighborhood Park
George Webb Neighborhood Park	Winniford Neighborhood Park
Gray Branch Undeveloped	Veterans Memorial Special Purpose Park

McKINNEY PARKS MASTER PLAN | 55

Lakes or Ponds - 1  
Restroom - 1  
Off Street Parking - 251

PICNIC UNITS - 7  
Drinking Fountain - 2  
Off Street Parking - 48  
Handicap parking - 2

McKINNEY PARKS MASTER PLAN | 45



- ✓ Photography
- ✓ Location
- ✓ Size
- ✓ Classification
- ✓ Amenities List



## Falcon Creek Park

Classification: Neighborhood Park  
301 Peregrine Dr  
Acres: 11.6



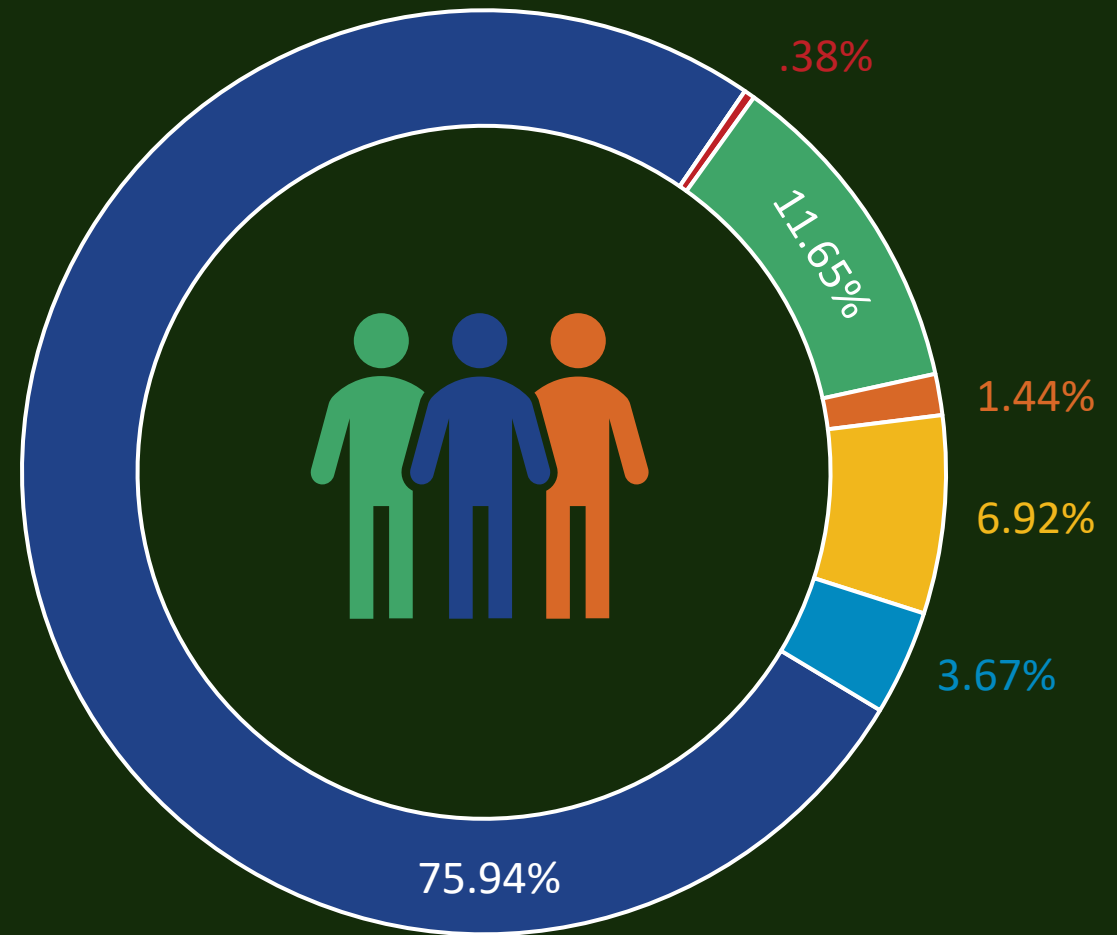
### Park Amenities:

Basketball Courts - 1	BBQ Grills - 3
Backstops - 1	Drinking Fountain - 1
Playground Units - 2	Lakes or Ponds - 1
Jogging Trail - 0.3 mi	Off Street Parking - 16
Stocked Fishing Pond - 1	
Small Pavilions - 1	
Picnic Units - 6	



# Population & Demographics

- ✓ Age
- ✓ Race
- ✓ Employment Size
- ✓ Home Values
- ✓ Household Incomes
- ✓ Other





# Needs Assessment

You are viewing Elizabeth McClrath's screen View Options

Speaker View

Revu File Edit View Document Batch Tools Window Help

**McKINNEY TEXAS**  
Unique by nature.

**Parks, Recreation & Open Space Master Plan Update**  
Park Board Update  
September 10, 2020

**DUNAWAY**

6:19 PM 9/10/2020

Stop Video Participants Chat Share Screen Record R

10

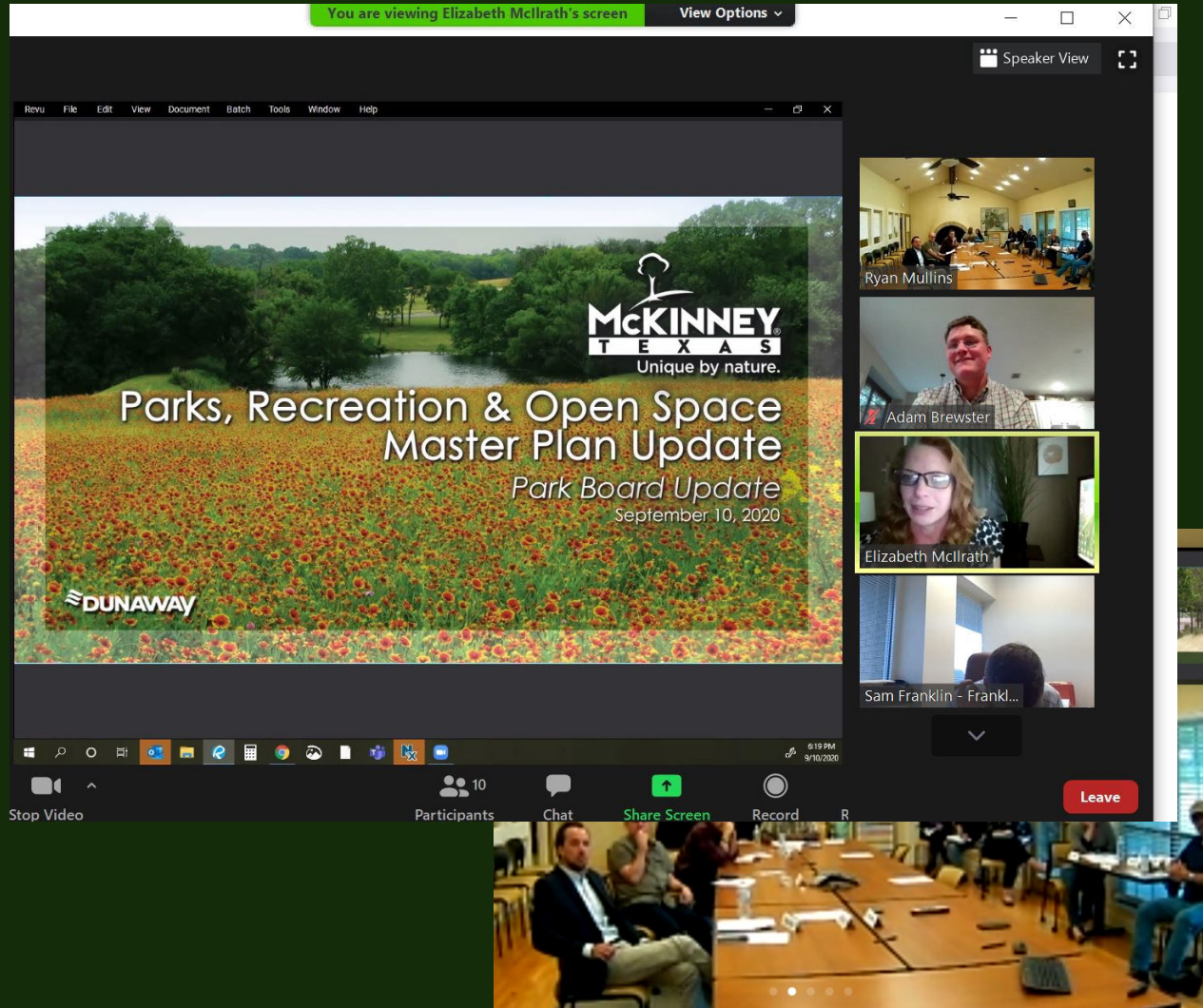
Leave

Ryan Mullins

Adam Brewster

Elizabeth McClrath

Sam Franklin - Frankl...



**DUNAWAY**

**Parks, Recreation & Open Space Master Plan Update**  
McKinney, TX

Priority Rankings  
May 14, 2020

1. Check one: ☒ Park Board ☐ CDC

2. How would you rate each priority consideration listed below (circle a number)?  
3 = High Priority 1 = Low Priority  
2 = Moderate Priority 0 = Not Needed at All

• Multi-Use Fields	3	2	1	0
• Practice Fields	3	2	1	0
• Soccer Fields	3	2	1	0
• Baseball Fields	3	2	1	0
• Softball Fields	3	2	1	0
• Cricket Fields	3	2	1	0
• Indoor Tennis	3	2	1	0
• Esports Arena	3	2	1	0
• Outdoor Fitness	3	2	1	0
• Indoor Athletic Center	3	2	1	0
• Expand Recreation Center	3	2	1	0
• New Recreation Center	3	2	1	0
• Adult / Senior Center	3	2	1	0
• Restroom / Concessions	3	2	1	0
• Amphitheater	3	2	1	0
• Shade Structures	3	2	1	0
• Pavilions	3	2	1	0
• Playgrounds	3	2	1	0
• Lighting in Parks	3	2	1	0
• Wayfinding / Signage	3	2	1	0
• Trails	3	2	1	0
• Learning Stations	3	2	1	0
• Docks / Water Access	3	2	1	0
• Waterpark	3	2	1	0
• On-Water Recreation	3	2	1	0
• Fishing Piers	3	2	1	0
• Boardwalks / Interpretation	3	2	1	0
• Botanic Garden	3	2	1	0
• Nature & Event Center	3	2	1	0
• Nature Preserve	3	2	1	0
• Zip Line Course	3	2	1	0
• Drone Areas	3	2	1	0
• Public Art	3	2	1	0
• Downtown Park	3	2	1	0
• Special Events	3	2	1	0
• Dog Park	3	2	1	0
• Technology in Parks	3	2	1	0

Page 1 of 2



# Outdoor Priority Rankings

## HIGH

Rank	High Priorities	High
1	Trails	◆
2	Downtown Park	◆
3	Multi-Use Fields	◆
4	Lighting in Parks	◆
5	Restroom / Concessions	◆
6	Outdoor Fitness	◆
7	Shade Structures	◆
8	Special Events	◆
9	Pavilions	◆
10	Wayfinding / Signage	◆
11	Nature Preserve	◆
12	Practice Fields	◆
13	Soccer Fields	◆

## MOD

Rank	Moderate Priorities	Moderate
14	Playgrounds	◆
15	Learning Center	◆
16	Dog Park	◆
17	Public Art	◆
18	Fishing Piers	◆
19	Technology in Parks	◆
20	Waterpark	◆
21	Softball Fields	◆
22	Baseball Fields	◆



# Most Needed Outdoor Facilities



Trails



Lighting in Parks



Multi-Use Fields



Downtown Park



Restrooms / Concession



# Indoor Priority Rankings

## HIGH

Rank	High Priorities	High
1	Expand Recreation Center	◆
2	Adult / Senior Center	◆

## MOD

Rank	Moderate Priorities	Moderate
3	Indoor Athletic Center	◆
4	Nature & Event Center	◆
5	New Recreation Center	◆



# Most Needed Indoor Facilities



Expand Recreation Center



Nature & Event Center

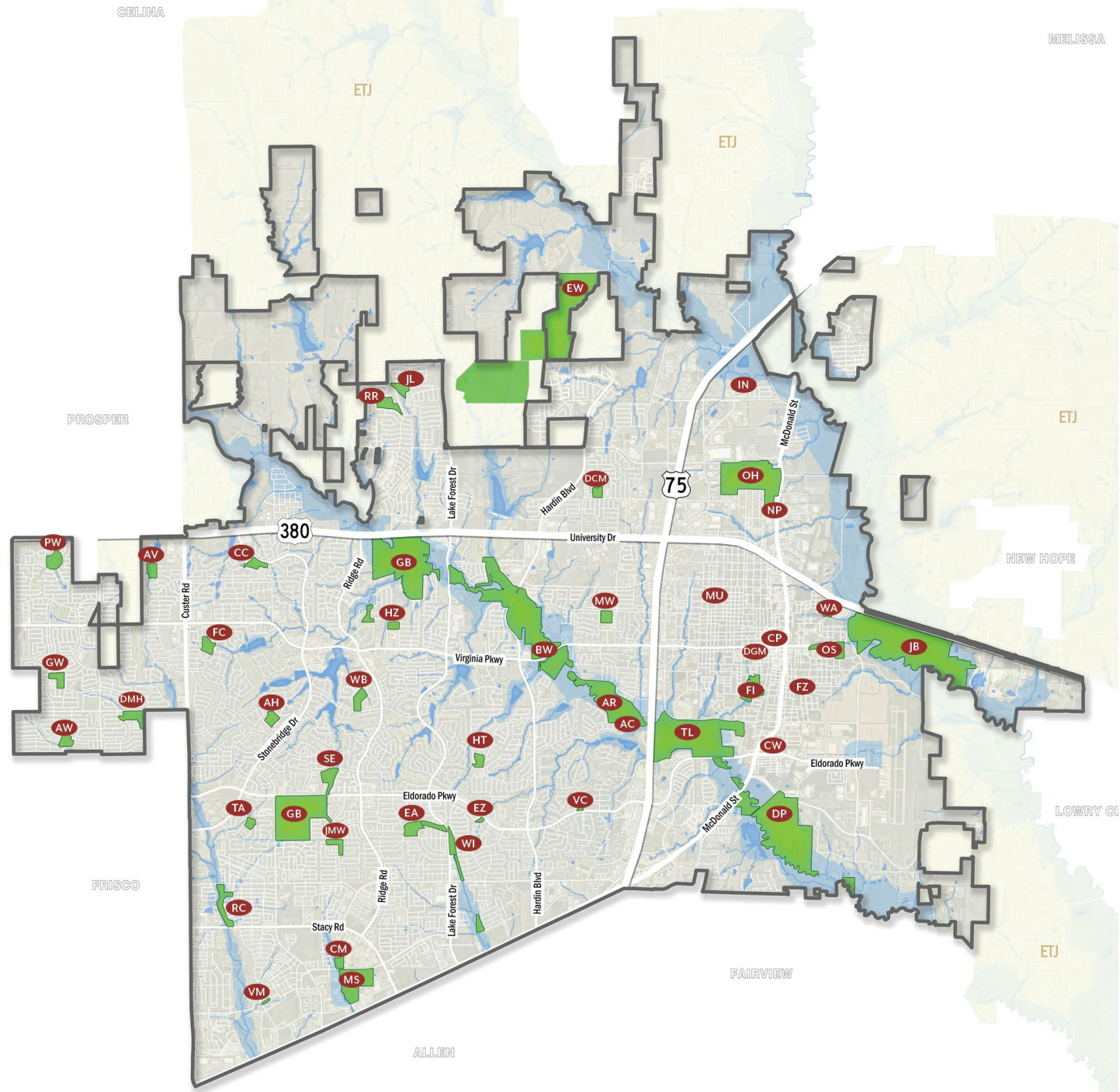


Adult / Senior Center



Indoor Athletic Center





## HIGH PRIORITIES BY PARK

- |  |   |
|--|---|
| <b>AH</b> <b>A. Hardy Eubanks, Jr.</b><br><i>Outdoor Fitness</i>   | <b>GB</b> <b>Gray Branch</b><br><i>Trails, Shade Structures, Pavilions, Wayfinding / Signage</i>  |
| <b>AR</b> <b>Al Ruschhaupt Soccer Complex</b><br><i>Trails, Lighting in Parks, Restroom/Concession, Shade Structures, Wayfinding/Signage, Upgraded Soccer Fields</i>   | <b>HT</b> <b>Hill Top</b><br><i>Trails, Lighting in Parks, Outdoor Fitness, Shade Structures, Pavilions, Wayfinding / Signage</i>   |
| <b>AC</b> <b>Alex Clark Memorial Disc Golf</b><br><i>Restroom/Concession, Wayfinding/Signage</i>   | <b>HZ</b> <b>Horizon</b><br><i>Trails, Lighting in Parks, Outdoor Fitness, Shade Structures, Pavilions</i>  |
| <b>AW</b> <b>Ash Woods</b><br><i>Lighting in Parks, Outdoor Fitness, Shade Structures, Pavilion, Wayfinding / Signage, Practice Fields</i>   | <b>IN</b> <b>Inspiration</b><br><i>Lighting in Parks, Pavilions, Wayfinding / Signage</i>   |
| <b>AV</b> <b>Aviator</b><br><i>Lighting in Parks, Outdoor Fitness, Shade Structures, Practice Fields</i>   | <b>JL</b> <b>Jim Ledbetter</b><br><i>Trails, Lighting in Parks, Outdoor Fitness, Wayfinding / Signage</i>   |
| <b>BW</b> <b>Bonnie Wenk</b><br><i>Trails, Lighting in Parks, Shade Structures, Special Events, Wayfinding / Signage</i>   | <b>JMW</b> <b>John M. Whisenant</b><br><i>Lighting in Parks, Shade Structures, Pavilion, Wayfinding / Signage</i>   |
| <b>CC</b> <b>Carey Cox Memorial</b><br><i>Lighting in Parks, Outdoor Fitness, Shade Structures, Wayfinding / Signage, Practice Fields</i>  | <b>JB</b> <b>Johnson Bolin Property</b><br><i>Shade Structures, Pavilions, Wayfinding / Signage</i>   |
| <b>CP</b> <b>Central Park</b><br><i>Downtown Park, Lighting in Parks, Special Events, Pavilions, Wayfinding / Signage</i>  | <b>JM</b> <b>Juanita Maxfield Aquatic Center</b><br><i>Shade Structures, Pavilions, Wayfinding / Signage</i>  |
| <b>CW</b> <b>Cottonwood</b>  | <b>MW</b> <b>Mary Will Craig</b><br><i>Trails, Lighting in Parks, Outdoor Fitness, Shade Structures, Pavilions, Practice Fields</i>   |
| <b>CM</b> <b>Crape Myrtle World Collection</b><br><i>Lighting in Parks, Special Events, Wayfinding / Signage</i>   | <b>MS</b> <b>McKinney Soccer Complex at Craig Ranch</b><br><i>Trails, Lighting in Parks, Restroom / Concession, Wayfinding / Signage, Soccer Fields</i>                     |
| <b>DL</b> <b>Day Labor Plaza</b><br><i>Trails, Downtown Park, Lighting in Parks, Restroom / Concession, Shade Structures, Special Events, Pavilions, Wayfinding / Signage</i>  | <b>MU</b> <b>Murphy</b><br><i>Trails, Lighting in Parks, Outdoor Fitness, Pavilions</i>   |
| <b>DP</b> <b>Dowell Property</b><br><i>Trails</i>  | <b>NP</b> <b>North Park</b><br><i>Trails, Multi-Use Fields, Lighting in Parks, Restroom / Concession, Shade Structures, Special Events, Pavilions, Wayfinding / Signage</i> |
| <b>DH</b> <b>Dwayne Howell Meditation Garden</b><br><i>Wayfinding / Signage</i>  | <b>OH</b> <b>Oak Hollow Golf Course</b><br><i>Restroom / Concession, Wayfinding / Signage</i>   |
| <b>DCM</b> <b>Dr. Charles McKissick</b><br><i>Lighting in Parks, Outdoor Fitness, Shade Structures, Wayfinding / Signage</i>   | <b>OS</b> <b>Old Settler's Park</b><br><i>Trails, Lighting in Parks, Shade Structures, Special Events, Pavilions, Wayfinding / Signage</i>                                  |
| <b>DGM</b> <b>Dr. Glenn Mitchell Memorial</b><br><i>Downtown Park, Lighting in Parks, Special Events, Wayfinding / Signage</i>   | <b>PW</b> <b>Prestwyck</b>  |
| <b>DMH</b> <b>Dr. Mack Hill</b><br><i>Outdoor Fitness, Wayfinding / Signage</i>  | <b>RC</b> <b>Recreation Center at Towne Lake</b><br><i>Lighting in Parks, Wayfinding / Signage</i>  |
| <b>EA</b> <b>E. A. Randles</b><br><i>Lighting in Parks, Restroom / Concession, Outdoor Fitness, Shade Structures, Pavilions, Wayfinding / Signage</i>  | <b>RW</b> <b>Rowlett Creek</b><br><i>Lighting in Parks, Outdoor Fitness, Shade Structures, Pavilions, Wayfinding / Signage</i>  |
| <b>EW</b> <b>Erwin Park</b><br><i>Trails, Lighting in Parks, Restroom, Special Events, Pavilions, Wayfinding / Signage, Nature Preserve</i>  | <b>SR</b> <b>Senior Recreation Center</b><br><i>Adult / Senior Center, Outdoor Fitness, Wayfinding / Signage</i>  |
| <b>EZ</b> <b>Ezra Lee (Tinker) Memorial</b><br><i>Lighting in Parks, Wayfinding / Signage</i>  | <b>SE</b> <b>Serenity</b><br><i>Lighting in Parks, Outdoor Fitness, Pavilions, Wayfinding / Signage</i>   |
| <b>FC</b> <b>Falcon Creek</b><br><i>Trails, Lighting in Parks, Outdoor Fitness, Shade Structures, Wayfinding / Signage</i>   | <b>TA</b> <b>Tom Allen, Jr.</b><br><i>Lighting in Parks, Outdoor Fitness, Wayfinding / Signage</i>  |
| <b>FI</b> <b>Finch Park</b><br><i>Trails, Lighting in Parks, Outdoor Fitness, Special Events, Wayfinding/Signage</i>   | <b>TL</b> <b>Towne Lake</b><br><i>Trails, Lighting in Parks, Restroom / Concession, Outdoor Fitness, Special Events, Pavilions, Wayfinding / Signage, Nature Preserve</i>   |
| <b>FZ</b> <b>Fitzhugh</b><br><i>Lighting in Parks, Wayfinding/Signage</i>  | <b>VC</b> <b>Valley Creek</b><br><i>Trails, Lighting in Parks, Pavilions, Wayfinding / Signage</i>  |
| <b>GN</b> <b>Gabe Nesbitt Community Park</b><br><i>Expand Recreation Center, Trails, Multi-Use Fields, Lighting in Parks, Restroom / Concession, Outdoor Fitness, Shade Structures, Special Events, Pavilions, Wayfinding / Signage, Practice Fields</i> | <b>WB</b> <b>W. B. Finney</b><br><i>Trails, Lighting in Parks, Shade Structures, Pavilions, Wayfinding / Signage</i>  |
| <b>GW</b> <b>George Webb</b><br><i>Lighting in Parks</i>   | <b>WA</b> <b>Wattley</b><br><i>Trails, Lighting in Parks, Shade Structures, Pavilions, Wayfinding / Signage, Practice Fields</i>  |
|  | <b>WI</b> <b>Winniford</b><br><i>Shade Structures, Pavilions, Wayfinding / Signage</i>  |
|  | <b>VM</b> <b>Veterans Memorial</b><br><i>Upgraded Lighting in Parks</i>   |



# Towne Lake Park

Classification: Community Park

Acres: 229.7

Address: 1405 Wilson Creek Pkwy

Last Update: 2018 (playground renovation)

2021 (master plan)

## Purpose of the Park:

This park serves to provide community wide recreation, sports and athletic opportunities.



## CIP Summary

Zone	Master Plan	DD / CD	Restore	Enhance	Re-Imagine	Review
X	Yes	No	✓	✓	✓	NA

## Summary of Priorities

Restore	Enhance	Re-Imagine
<b>High Priority Items</b> 4 Lighting in Parks 5 Restroom / Concession <b>Moderate Priority Items</b> 18 Fishing Piers 21 Softball Fields	<b>High Priority Items</b> 1 Trails 6 Outdoor Fitness 9 Pavilions <b>Moderate Priority Items</b> 14 Playgrounds 19 Technology in Parks	<b>High Priority Items</b> 8 Special Events 10 <u>Wayfinding</u> / Signage <b>Moderate Priority Items</b> 15 Learning Stations 17 Public Art
Estimated Budget Range:	Estimated Budget Range:	Estimated Budget Range:



# High Priority Items

HIGH PRIORITY ITEMS																														
		BUDGET RANGES	A. Hardy Eubanks, Jr.	Al Ruschhaupt Soccer Complex	Alex Clark Memorial Disc Golf	Ash Woods	Aviator	Bonnie Wenk	Carey Cox Memorial	Central Park	Cottonwood	Crape Myrtle World Collection	Day Labor Plaza	Dowell Property	Dwayne Howell Meditation Garden	Dr. Charles McKissick	Dr. Glenn Mitchell Memorial	Dr. Mack Hill	E. A. Randles	Erwin Park	Ezra Lee (Tinker) Memorial	Falcon Creek	Finch Park	Fitzhugh	Gabe Nesbitt Community Park	George Webb	Gray Branch	FUNDING SOURCES*		
Outdoor																														
1	Trails	\$750,000 - \$1,500.00 per mile	◆				◆						◆				◆		◆		◆				◆		◆			
2	Downtown Park	Varies								◆							◆			◆		◆				◆		◆		
3	Multi-Use Fields	\$400,000 - \$500,000 each \$750,000 - \$1,000,000 (artificial turf)																								◆		◆		
4	Lighting in Parks	\$5,000 - \$7,500 per pole pedestrian \$60,000 - \$80,000 per sports pole	◆		◆	◆	◆	◆	◆	◆		◆					◆	◆		◆	◆	◆	◆	◆	◆	◆	◆	◆	◆	
5	Restroom / Concession	\$500,000 - \$600,000 range	◆																◆	◆						◆		◆		
6	Outdoor Fitness	\$5,000 - \$7,500 each \$40,000 - \$50,000 range (multiple)	◆			◆	◆		◆								◆		◆	◆			◆	◆		◆				
7	Shade Structures	\$75,000 - \$150,000 range		◆	◆	◆	◆	◆	◆								◆		◆			◆				◆		◆		
8	Special Events	Varies						◆			◆		◆					◆			◆		◆		◆					
9	Pavilions	\$300,000 - \$400,000 range				◆				U									◆	◆						◆		◆		
10	Wayfinding / Signage	\$800 - \$1,500 per sign	◆	U	◆			◆	◆	◆		U			◆	◆	◆	◆	◆	◆	◆	◆	◆	◆	◆	◆	◆	◆		
11	Nature Preserve	Varies																		◆										
12	Practice Fields	\$250,000 range per field				◆	◆		◆																	◆				
13	Soccer Fields	\$400,000 - \$500,000 each \$750,000 - \$1,000,000 (artificial turf)	U																									◆		
Indoor																														
1	Expand Recreation Center	Varies																								◆				
2	Adult / Senior Center	Varies																												

◆ = Recommended Location  
U = Upgrades or Replacements



A photograph of a park scene with large trees, a fountain, and picnic tables. The image is slightly faded and has a dark green horizontal band across the middle containing the text.

Discussion / Questions