



Bloomdale Campus

Presenter: Danielle Sneed, Deputy Clinical Officer



Collin County Mental Health Mental Retardation (MHMR) Center d/b/a **LifePath Systems**

- Established in 1986 by Collin County Commissioners Court
- We serve as the Public Mental Health, Substance Use, & Intellectual Disabilities Provider (LBHA & LIDDA)
- Leverage Federal, State, & Local funds to expand services each year (56% growth in unique people served over past 7 years, 2016-2023)

Our Core Services

- Early Childhood Intervention Services (ages 0 up to 3rd birthday)
- Mental Health Care Services (ages 3+)
- Substance Use Services (teens and adults)
- Intellectual & Developmental Disabilities Services (ages 3+)



Why Expansion of Services is Necessary

County population is growing at a 3% rate or more each year.

Collin County is 6th Most Populated County in State



1 in 5 US Adults Experience Mental Illness Each Year

Average Delay Between Onset of Mental Illness and Accessing Treatment is 11 Years

Need for Diversion & Crisis Services

Diversion

Criminalization of
Mental Illness

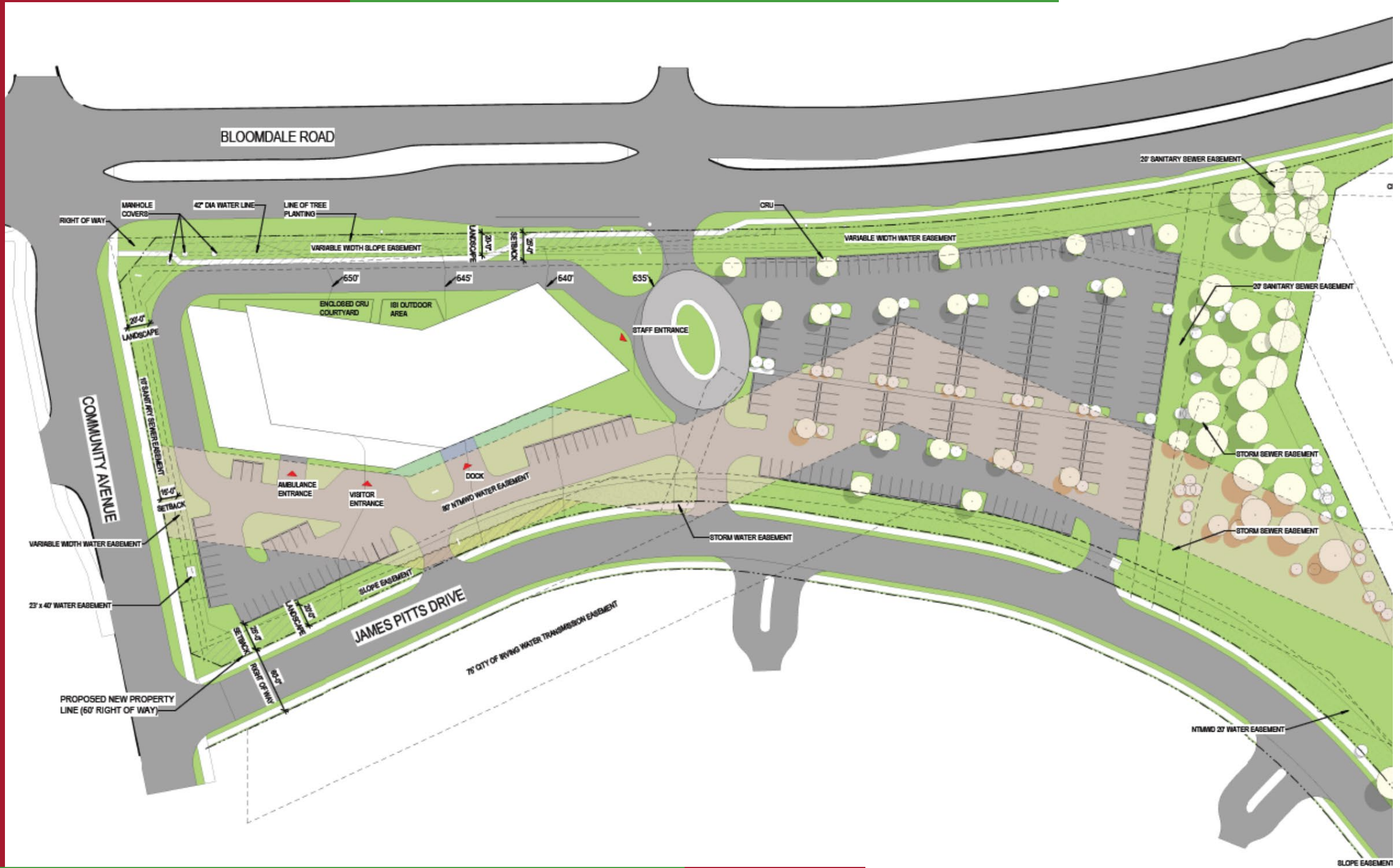
Costs to Society



Crisis

Not enough
Psychiatric Beds in
State

Reduce non-
emergent use of
ERs



Location Highlights

- Located near County Jail
- Significant In-Kind match of land from County
- Better able to roll out new grants/programs in short period



Overview of Project

- Construction Began Nov 2023
- Construction Completion by May 2025
- Architect: Beck Architecture
- Construction: Rogers O'Brien
- 110,000 Total SF
- Programming:
 - BH Diversion Center, Crisis Center, and Intensive Services
 - IDD Authority
 - Administration Offices
 - Meeting Space
 - Shell Space for Future Growth

Funding

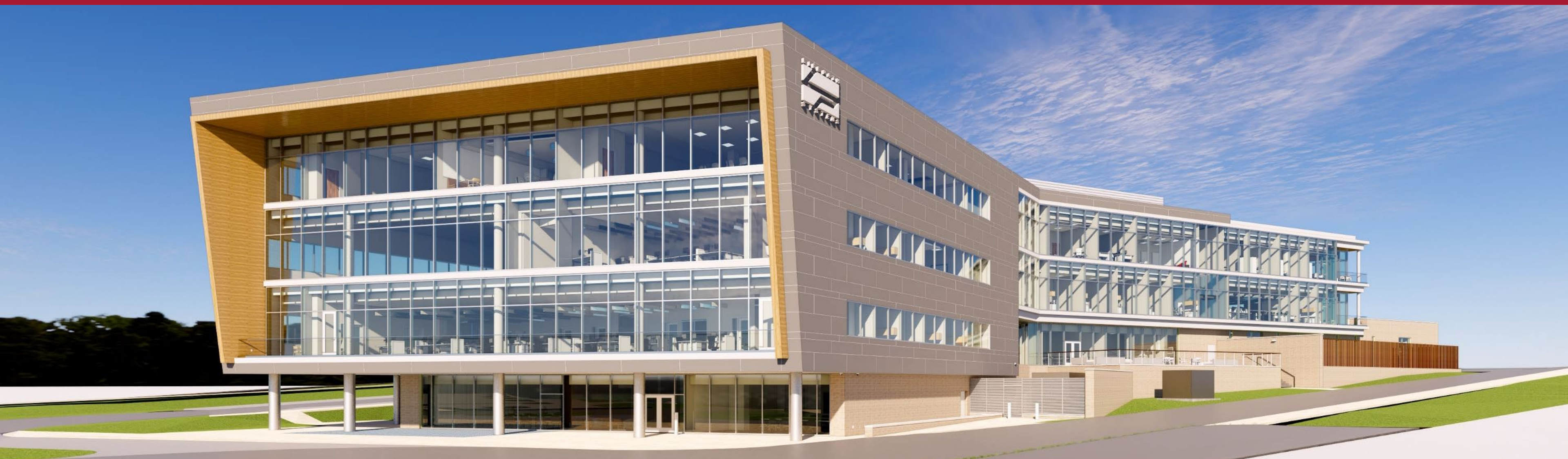
Total Cost of Project: \$47 Million

- \$31 Million = Center Reserves
- \$0.5 Million = Impact Fees Waived
- \$5.5 Million = Grant Requests
- \$10 Million = Financing





FRONT AND BACK ELEVATIONS





Questions?

Danielle Sneed

Deputy Clinical Officer

dsneed@lifepathsystems.org