

Cornerstone Ranch

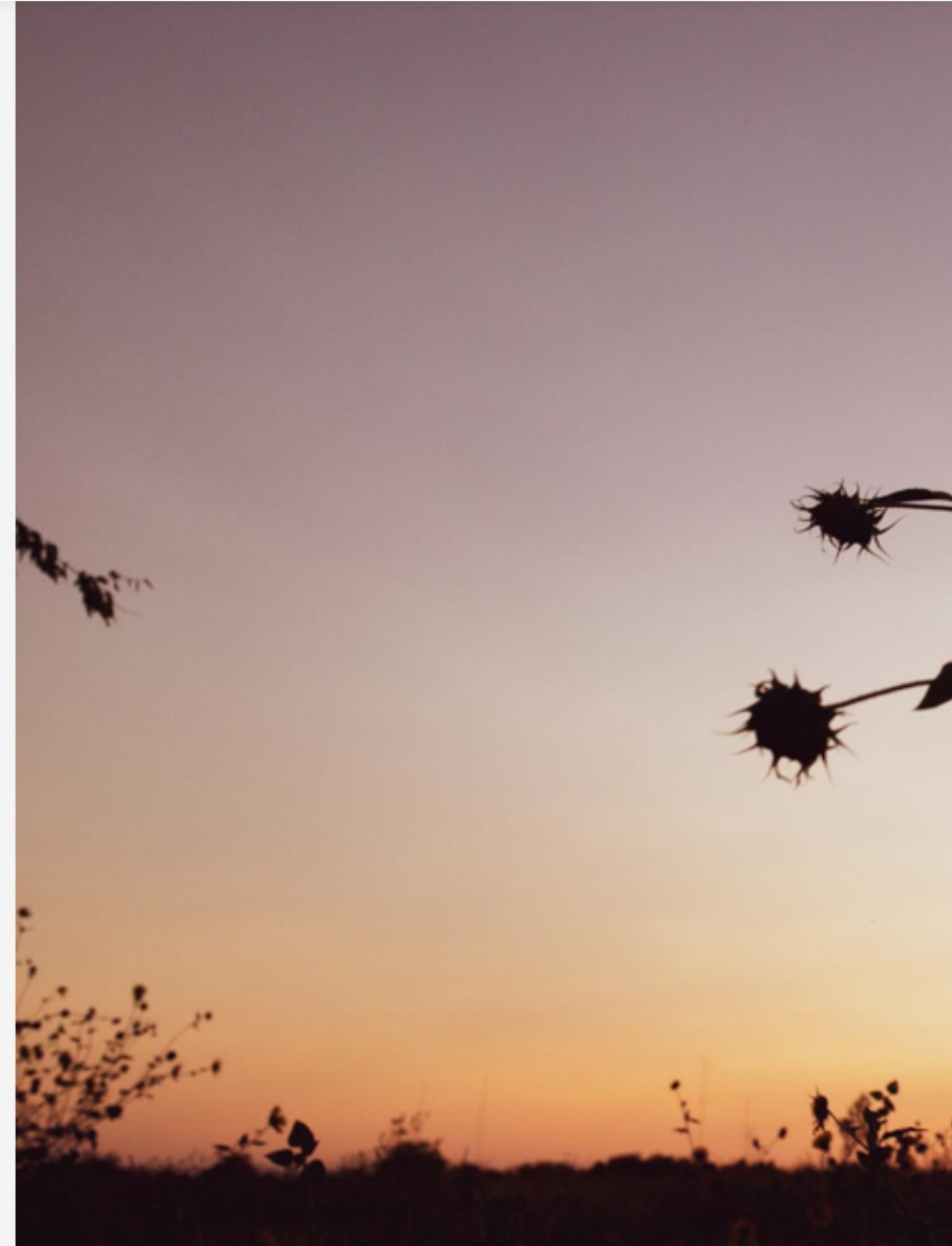


MICHAEL **JOYCE**
PROPERTIES

CORE VALUES

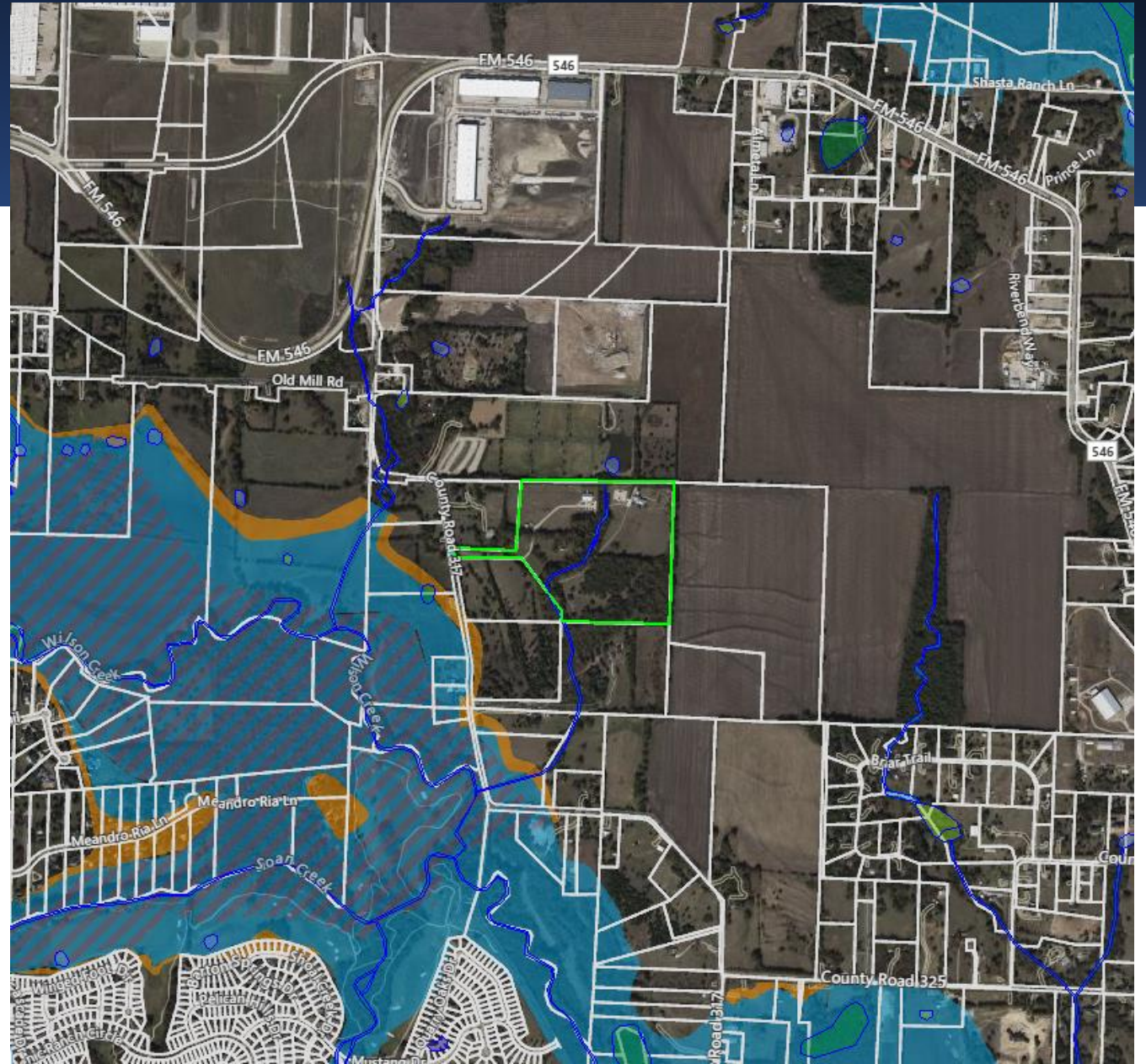
INTEGRITY ~ PEOPLE ~ FAMILY ~
FAITH

- **Integrity** is paramount in every decision we make.
Our responsibility to do the right thing in every situation drives each choice we make.
- We value **people**. We strive to build lasting relationships with everyone we work with including our employees, clients, engineers and consultants.
- We do what we do for our **family**. Our company thrives in order to provide our employees the time and ability to balance work and family responsibilities.
- Our Christian beliefs and **faith** lead our decisions in how we conduct business and treat others.



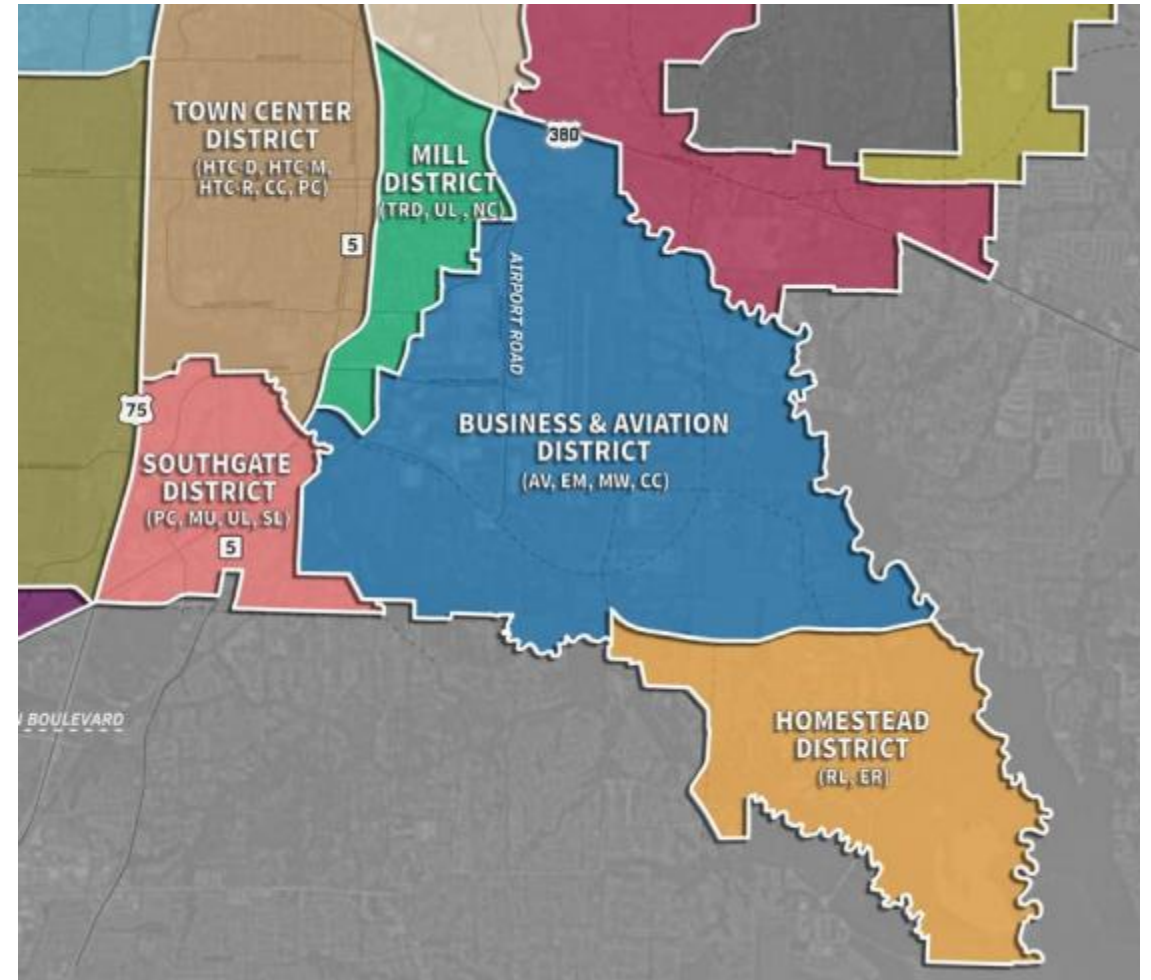
Site Vicinity

- 41.87 total acres
- South of the airport
- Currently houses Cornerstone Ranch



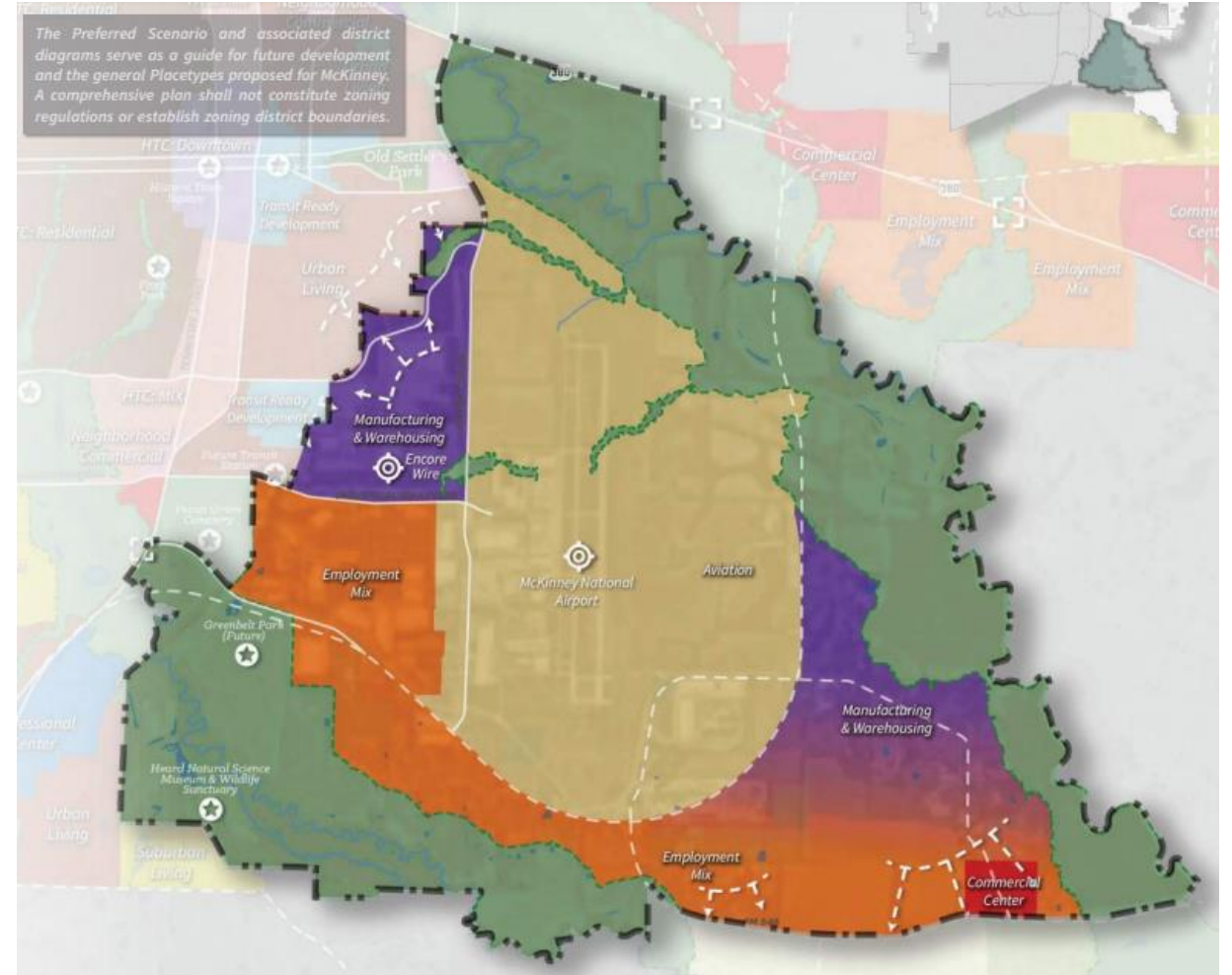
Comprehensive Plan

- Located within the Business & Aviation District

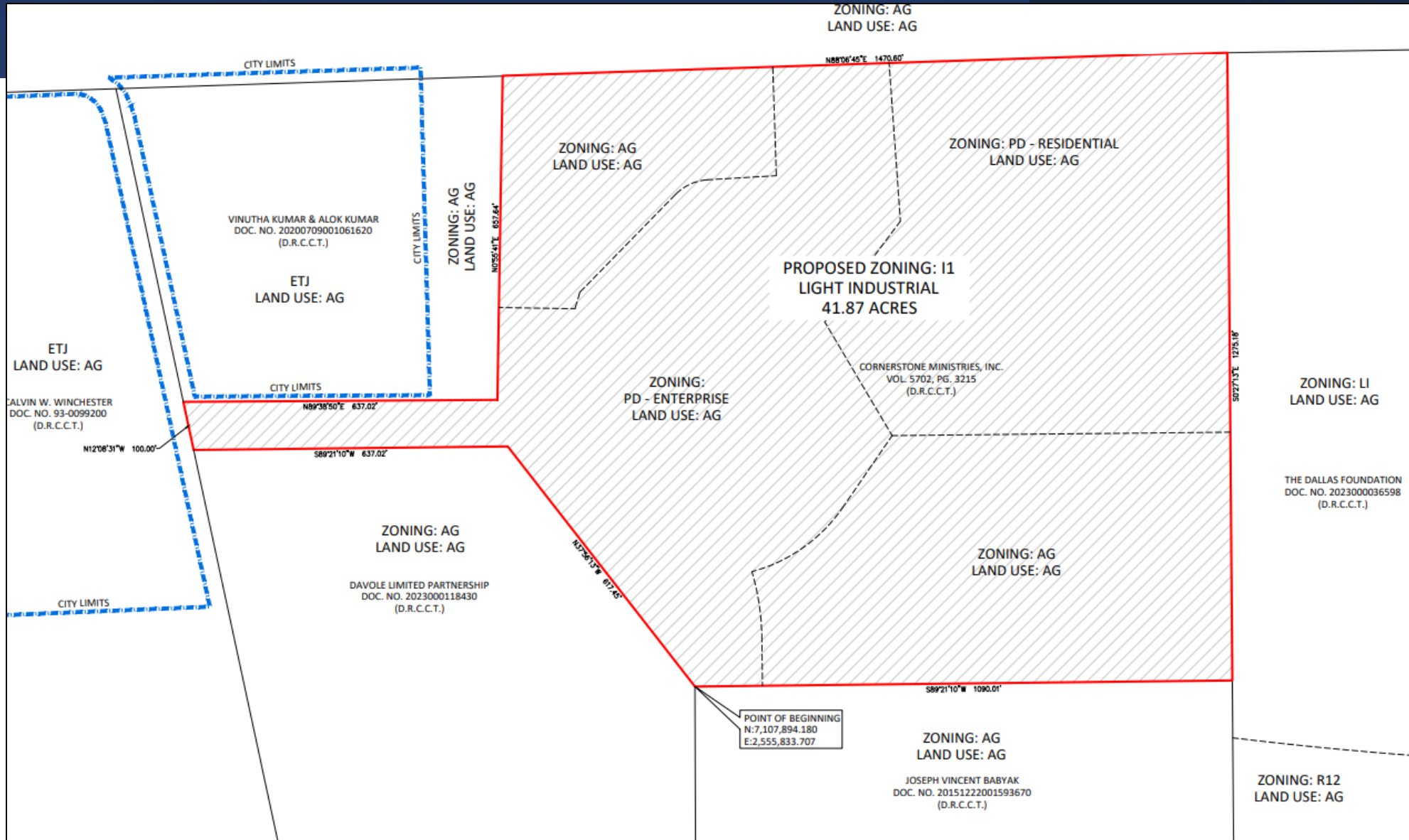


Future Land Use

- Within the Business & Aviation District, site is designated as Employment Mix
- Supported business is office, R&D facilities, medical clinics, and light industrial
- Proposed zoning is L1 – Light Industrial

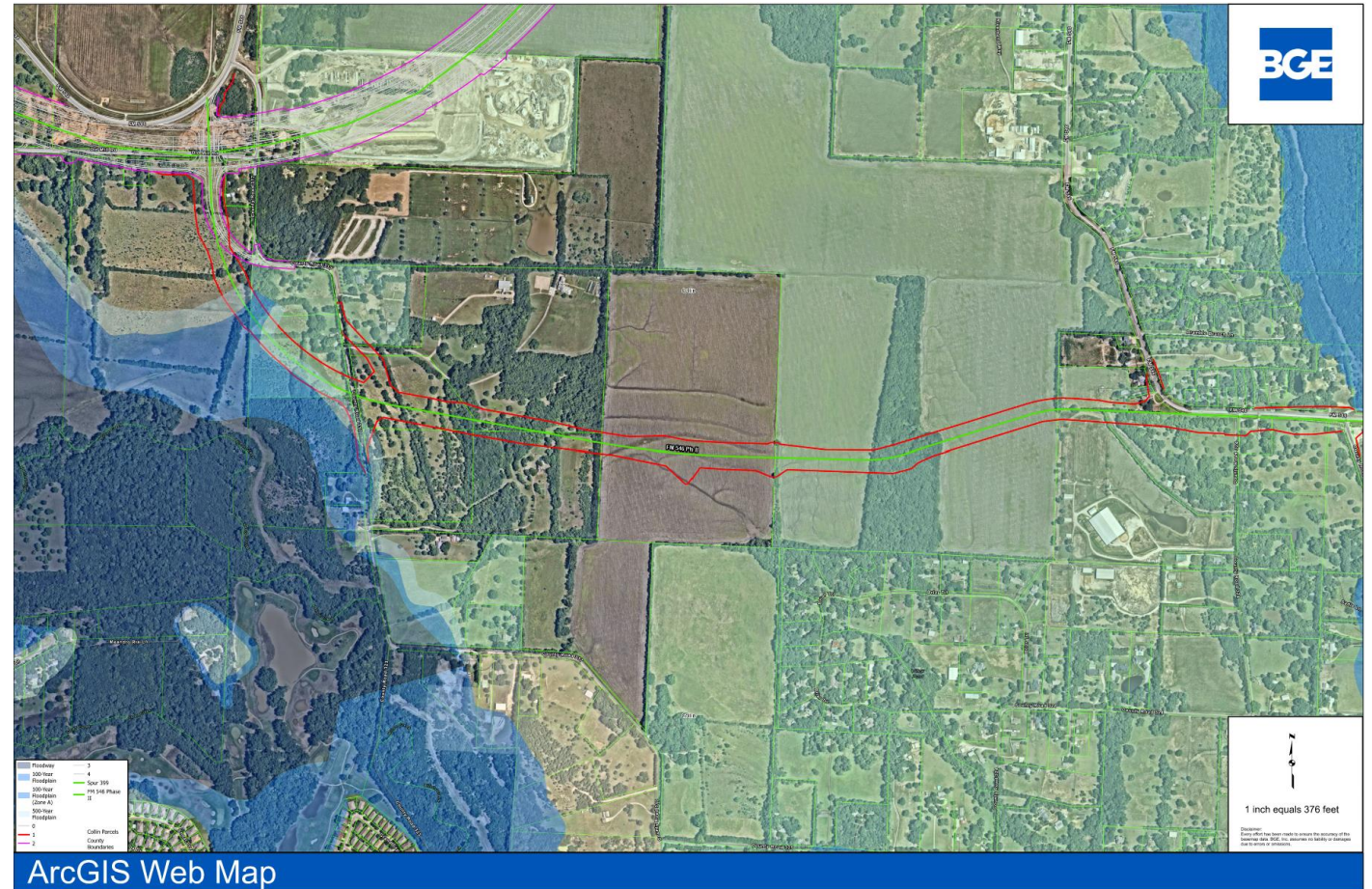


Site Details



Infrastructure/Roadway/Connectivity

- East / West Connectivity:
Major Roadway Construction
Via CR 546



Thank you



MICHAEL **JOYCE**
PROPERTIES