

Parks CIP Reappropriation Requests

Wattley Park

Old Settler's Park

Greens Neighborhood Park

Horizon Playground

Mobile Stage

Recreation Center at Towne Lake

Erwin Park



WATTLEY PARK IMPROVEMENTS

- Playground w/ Fibar
- Enhanced Pavilion
- New Pavilion
- Basketball Court
- Lighted Trail Loop
- Open Space
- Portalet Enclosure
- Parking

Estimated Construction
Fall of 2025

WATTLEY PARK - \$2,797,804 reappropriation



OLD SETTLERS PARK – \$489,314 reappropriation



GREENS NEIGHBORHOOD PARK - \$1,580,743 reappropriation

HORIZON PARK NEW PLAYGROUND

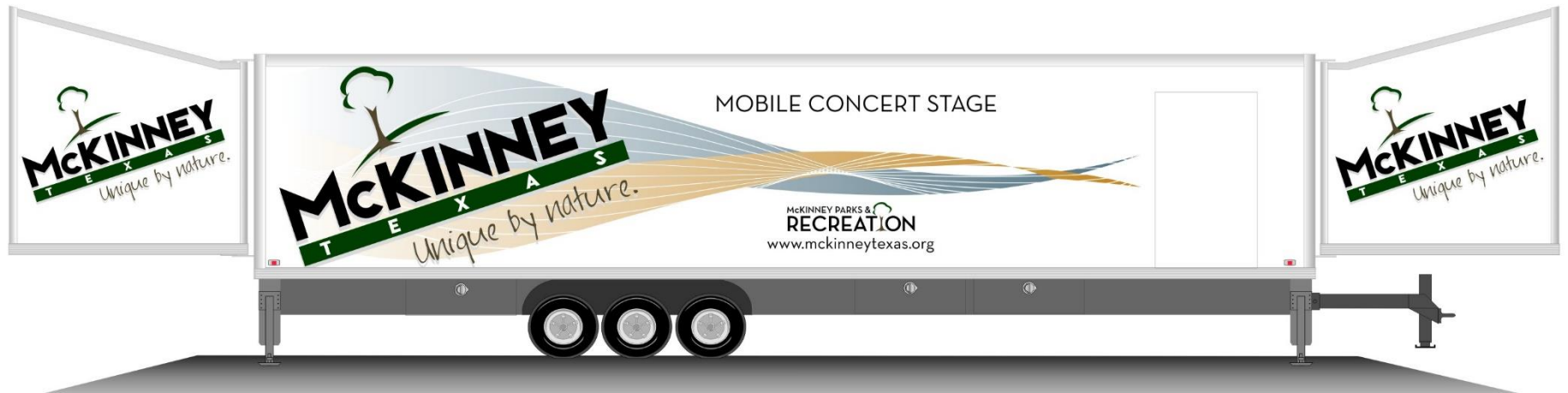


- Playground Replacement Complete and Open to the Public
- Old Play Equipment Donated to Charitable Organization to be Reconstructed in Underprivileged Country

BEFORE



HORIZON PARK - \$318,664 reappropriation



MOBILE STAGE - \$315,077 reappropriation



RECREATION CENTER AT TOWN LAKE - \$1,039,504 reappropriation



Main Entry Monument



ERWIN PARK - \$200,000 reappropriation

Parks CIP Discussion

Funding

Priority Projects

May 8th Joint MCDC/Park Board Meeting

Priority Rankings - Outdoor Facilities

Rank	High Priorities	High	Rank	Moderate Priorities	Moderate
1	Trails	◆	14	Playgrounds	◆
2	Downtown Park	◆	15	Learning Center	◆
3	Multi-Use Fields	◆	16	Dog Park	◆
4	Lighting in Parks	◆	17	Public Art	◆
5	Restroom / Concessions	◆	18	Fishing Piers	◆
6	Outdoor Fitness	◆	19	Technology in Parks	◆
7	Shade Structures	◆	20	Waterpark	◆
8	Special Events	◆	21	Softball Fields	◆
9	Pavilions	◆	22	Baseball Fields	◆
10	Wayfinding / Signage	◆			
11	Nature Preserve	◆			
12	Practice Fields	◆			
13	Soccer Fields	◆			

Priority Rankings - Indoor Facilities

Rank	High Priorities	High	Rank	Moderate Priorities	Moderate
1	Expand Recreation Center	◆	3	Indoor Athletic Center	◆
2	Adult / Senior Center	◆	4	Nature & Event Center	◆
			5	New Recreation Center	◆

Potential New Projects FY 25-31

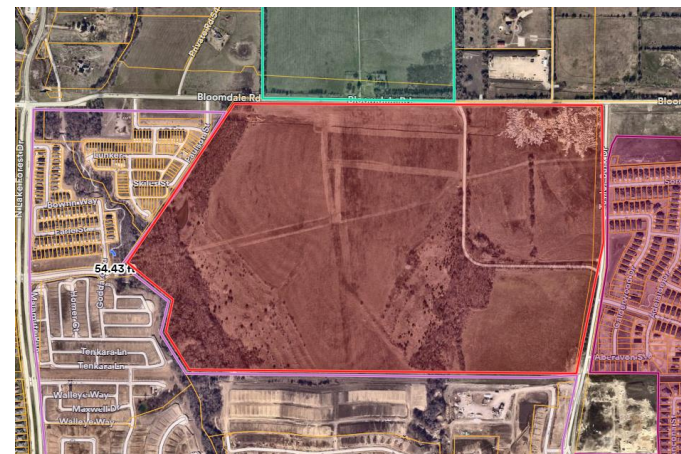
- Trails
- Neighborhood Parks
- Redevelopment
- New Development
- Master Plans

A decorative footer consisting of three horizontal lines: a top dark blue line, a middle olive green line, and a bottom white line.



Regional Sports Park - 230 acres

- Property is receiving a lot of development interest
- RFQ for development partner?
- Infrastructure
- Indoor facility
 - Volleyball
 - Basketball
 - Pickleball
 - Gymnastics
- Soccer fields
- Cricket
- Baseball/softball
- Lacrosse
- Football
- Outdoor Pickleball
- Hotel/restaurants
- Parking
- Trails
- Other uses?
 - Outdoor stadium
 - Horse arena/rodeo/equestrian



Trails

- ADA improvements to trails (various locations and as conditions arise)
- Wilson Creek trail from Spur 399 east towards Heard Museum
- Nature Trails:
 - Bonnie Wenk
 - Douglas tract
 - Wilson Creek
 - Gray Branch