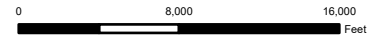
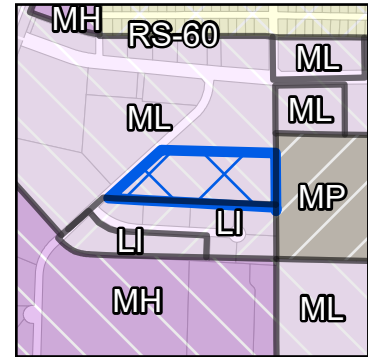
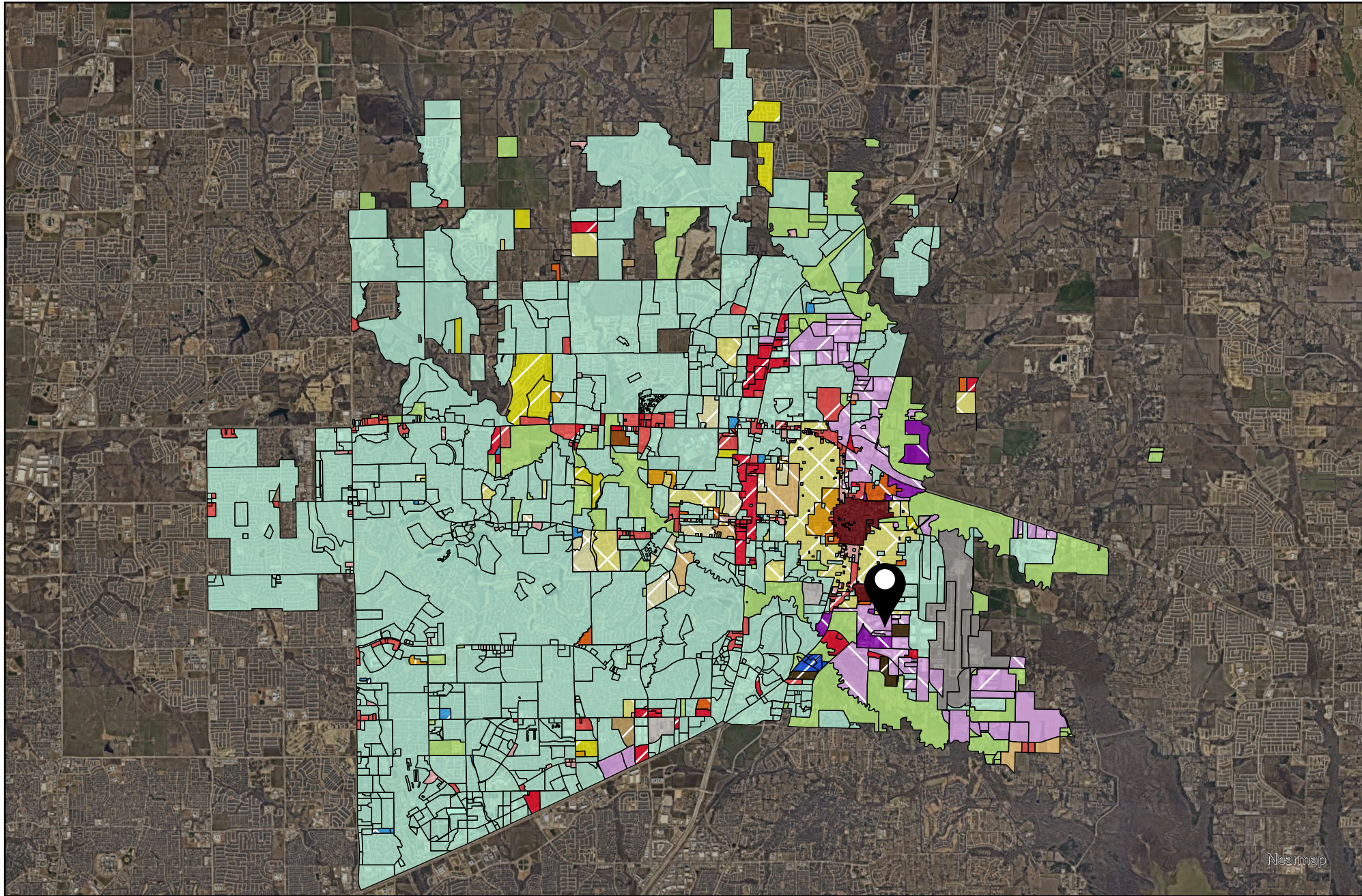


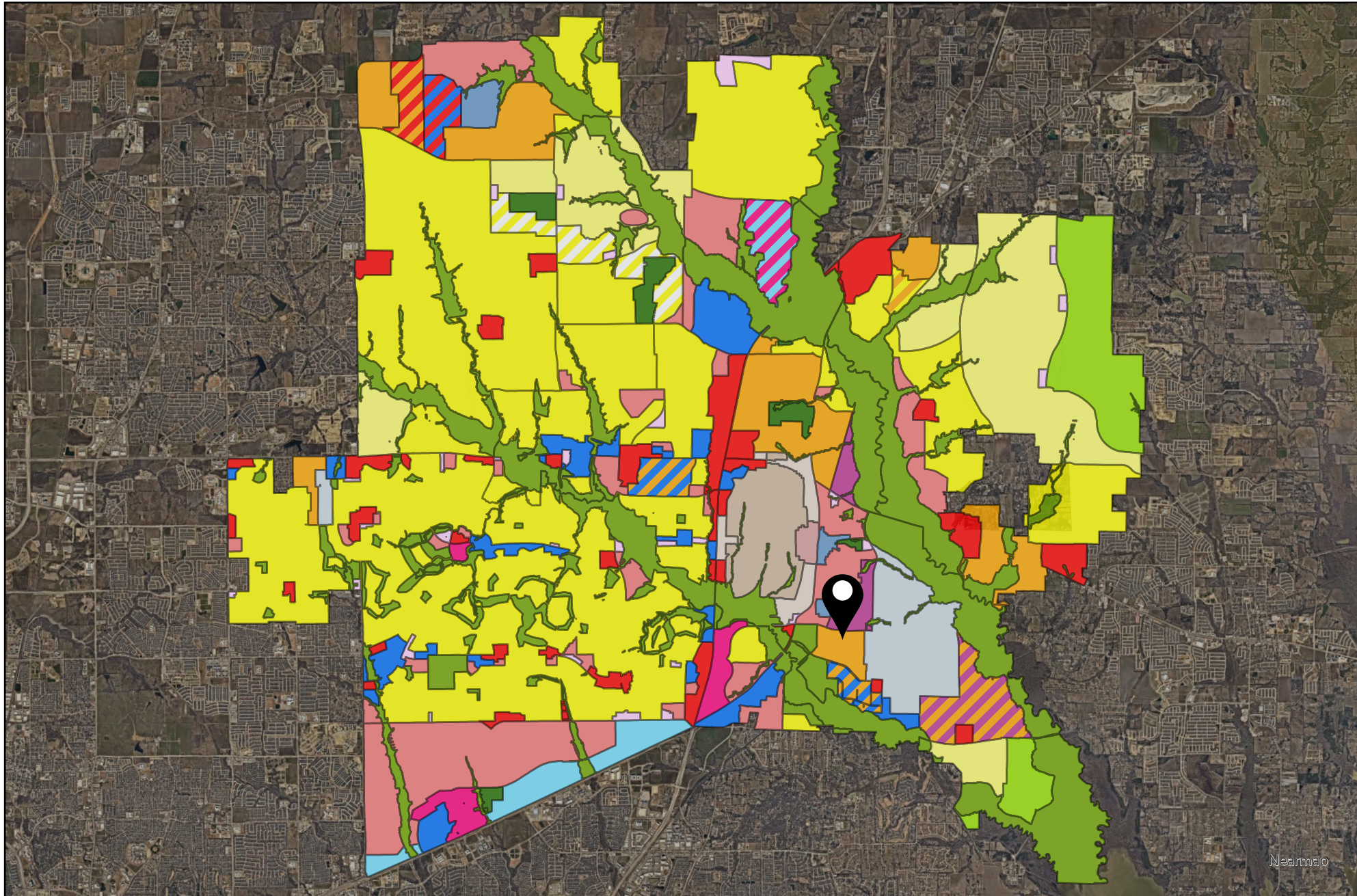
McKinney Couch Drive Industrial Design Exception

26-0021SP

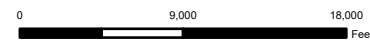


DISCLAIMER: This map and information contained in it were developed exclusively for use by the City of McKinney. Any use or reliance on this map by anyone else is at that party's risk and without liability to the City of McKinney, its officials or employees for any discrepancies, errors, or variances which may exist.





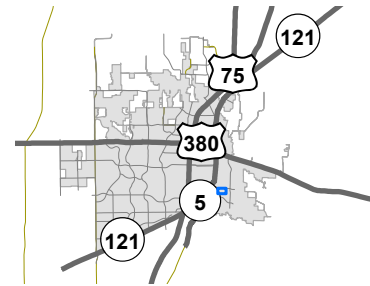
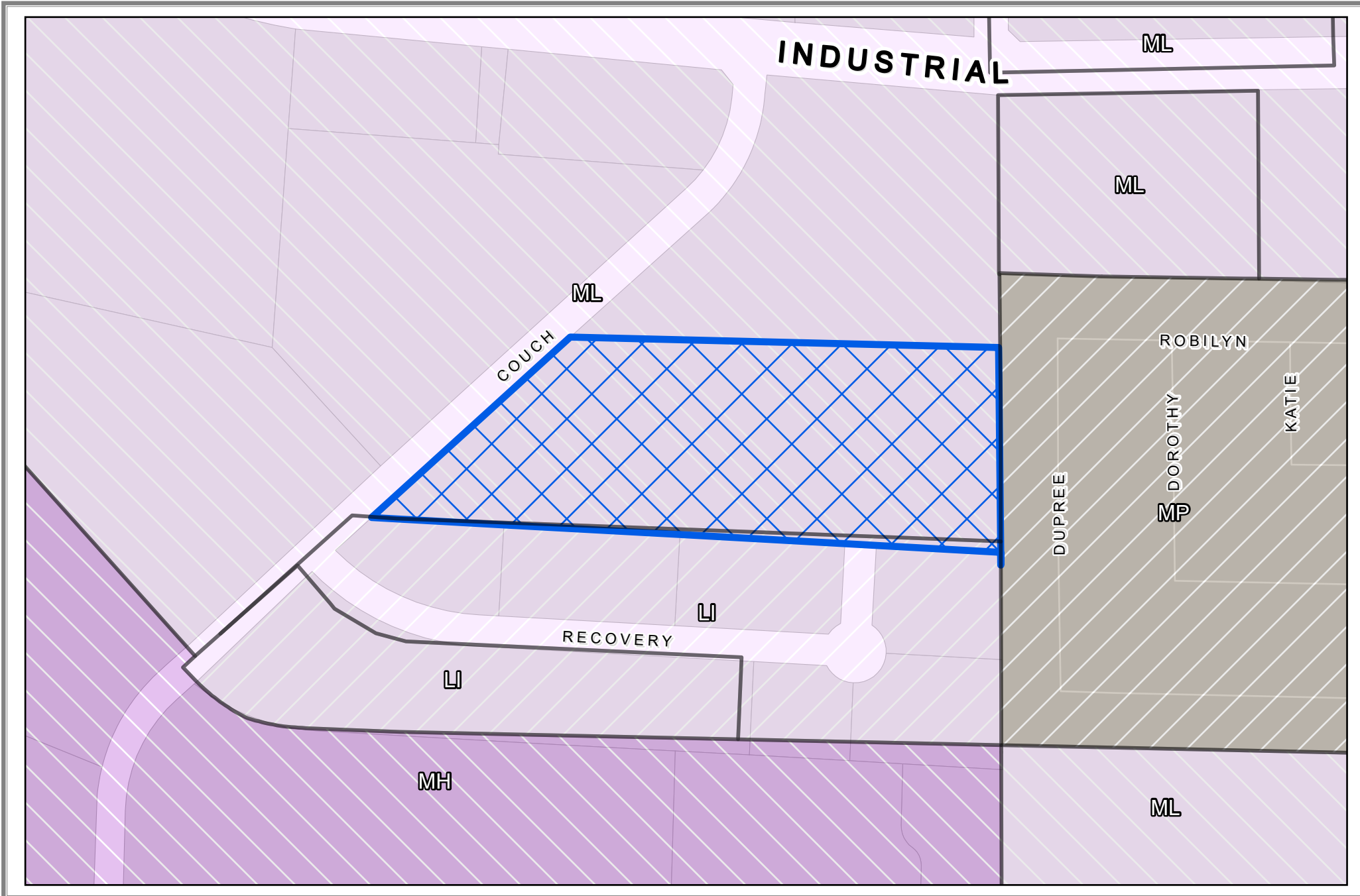
- Placetype
- Aviation
 - Commercial Center
 - Employment Mix
 - Entertainment Center
 - Estate Residential
 - Historic Town Center - Downtown
 - Historic Town Center - Mix
 - Historic Town Center - Residential
 - Manufacturing & Warehousing
 - Mixed Use Center
 - Neighborhood Commercial
 - Professional Center
 - Professional Center
 - Rural Residential
 - Suburban Living
 - Transit-Ready Development
 - Urban Living
 - Floodplain / Amenity Zone
 - Floodplain / Amenity Zone
 - Park
 - Employment Mix / Commercial Center
 - Entertainment Center / Mixed Use Center
 - Manufacturing & Warehousing / Employment Mix
 - Suburban Living / Employment Mix
 - Suburban Living / Estate Residential
 - Professional Center / Commercial Center
 - Professional Center / Employment Mix
 - Professional Center / Commercial Center
 - Professional Center / Employment Mix
 - Manufacturing & Warehousing




DISCLAIMER: This map and information contained in it were developed exclusively for use by the City of McKinney. Any use or reliance on this map by anyone else is at that party's risk and without liability to the City of McKinney, its officials or employees for any discrepancies, errors, or variances which may exist.

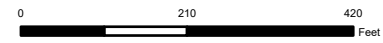


Nearmap



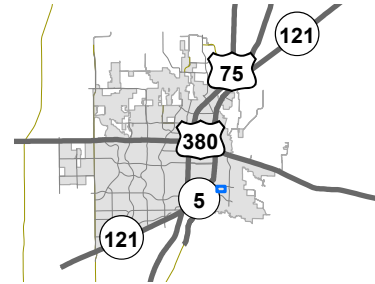
Vicinity Map

 SITE2026-0021




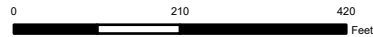
DISCLAIMER: This map and information contained in it were developed exclusively for use by the City of McKinney. Any use or reliance on this map by anyone else is at that party's risk and without liability to the City of McKinney, its officials or employees for any discrepancies, errors, or variances which may exist.





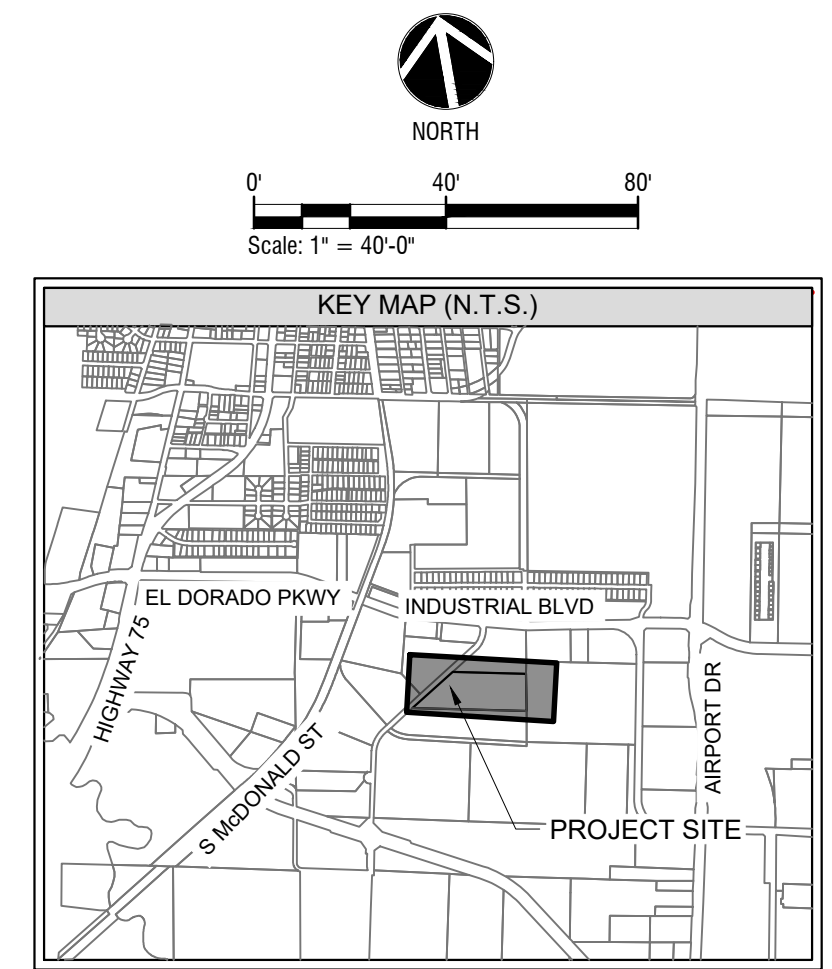
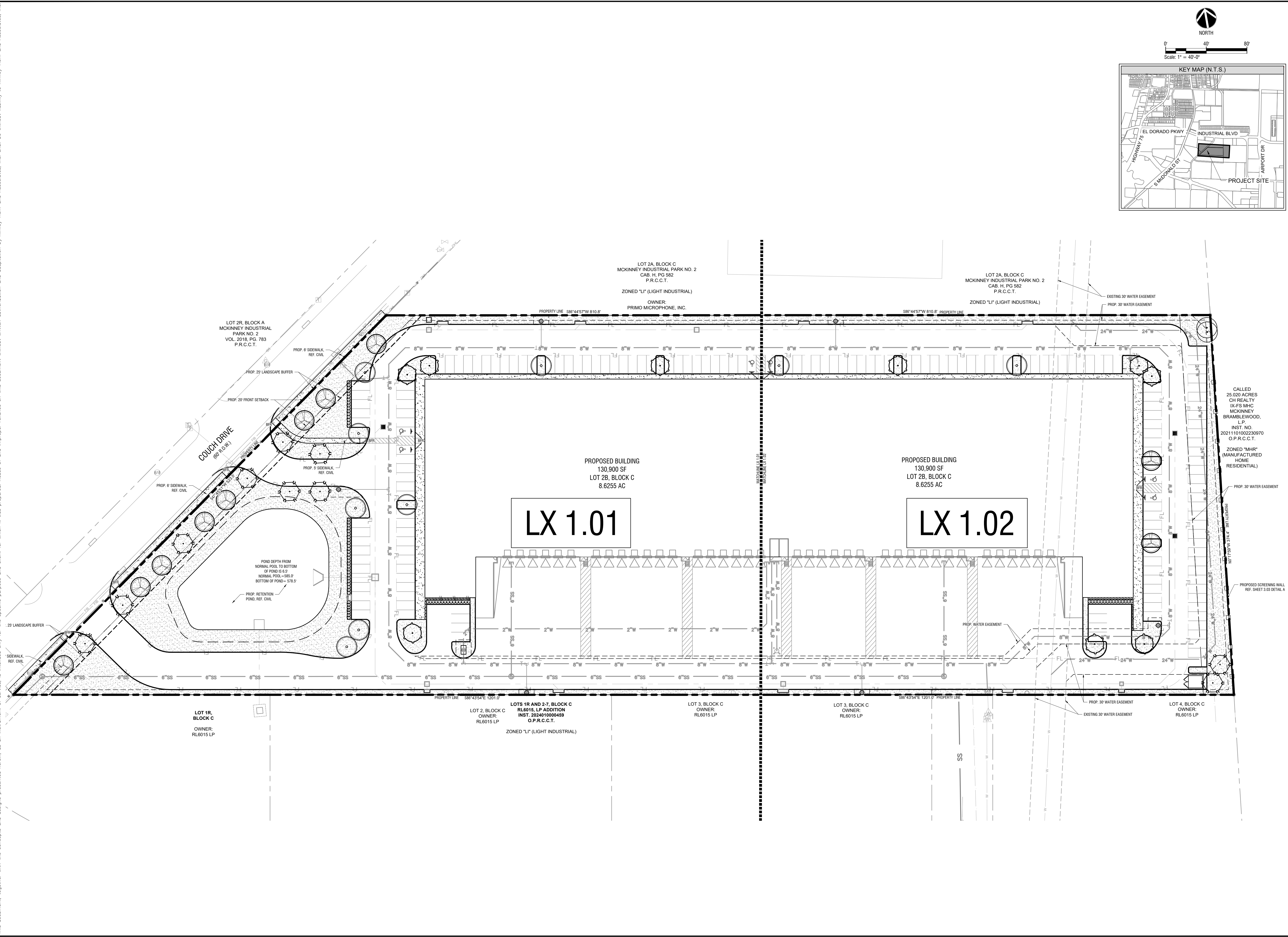
Vicinity Map

 SITE2026-0021



DISCLAIMER: This map and information contained in it were developed exclusively for use by the City of McKinney. Any use or reliance on this map by anyone else is at that party's risk and without liability to the City of McKinney, its officials or employees for any discrepancies, errors, or variances which may exist.

Plotted By: Roberson, Katelyn. Date: April 20, 2026. 11:47:43am. File Path: K:\MKN-LA\LP - Projects\064493227 - Couch Drive McKinney\CAD\Sheets\LP 1.01.dwg
 This document, together with the concepts and designs presented herein, is intended only for the specific purpose and client for which it was prepared. Reuse of and improper reliance on this document without written authorization and adaptation by Kimley-Horn and Associates, Inc. shall be without liability to Kimley-Horn and Associates, Inc.



No.	REVISIONS	DATE	BY

Kimley»Horn
 © 2026 KIMLEY-HORN AND ASSOCIATES, INC.
 6160 WARREN PARKWAY, SUITE 210, FRISCO, TX 75034
 PHONE: 972-335-3660
 WWW.KIMLEY-HORN.COM
 TEXAS REGISTERED ENGINEERING FIRM F-928

SEAL: LANDSCAPE ARCHITECT
 STATE OF TEXAS
 INST. NO. 20211101002230970
 O.P.R.C.C.T.
 4/20/2026

KHA PROJECT	064493227
DATE	APRIL 2026
SCALE	AS SHOWN
DESIGNED BY:	KWR
DRAWN BY:	KMR
CHECKED BY:	MRP

OVERALL PLAN

COUCH DRIVE
 CITY OF MCKINNEY
 COLLIN COUNTY, TEXAS

SHEET NUMBER
LC 1.00

