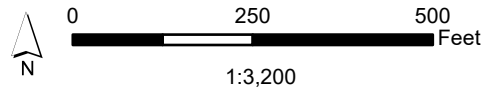
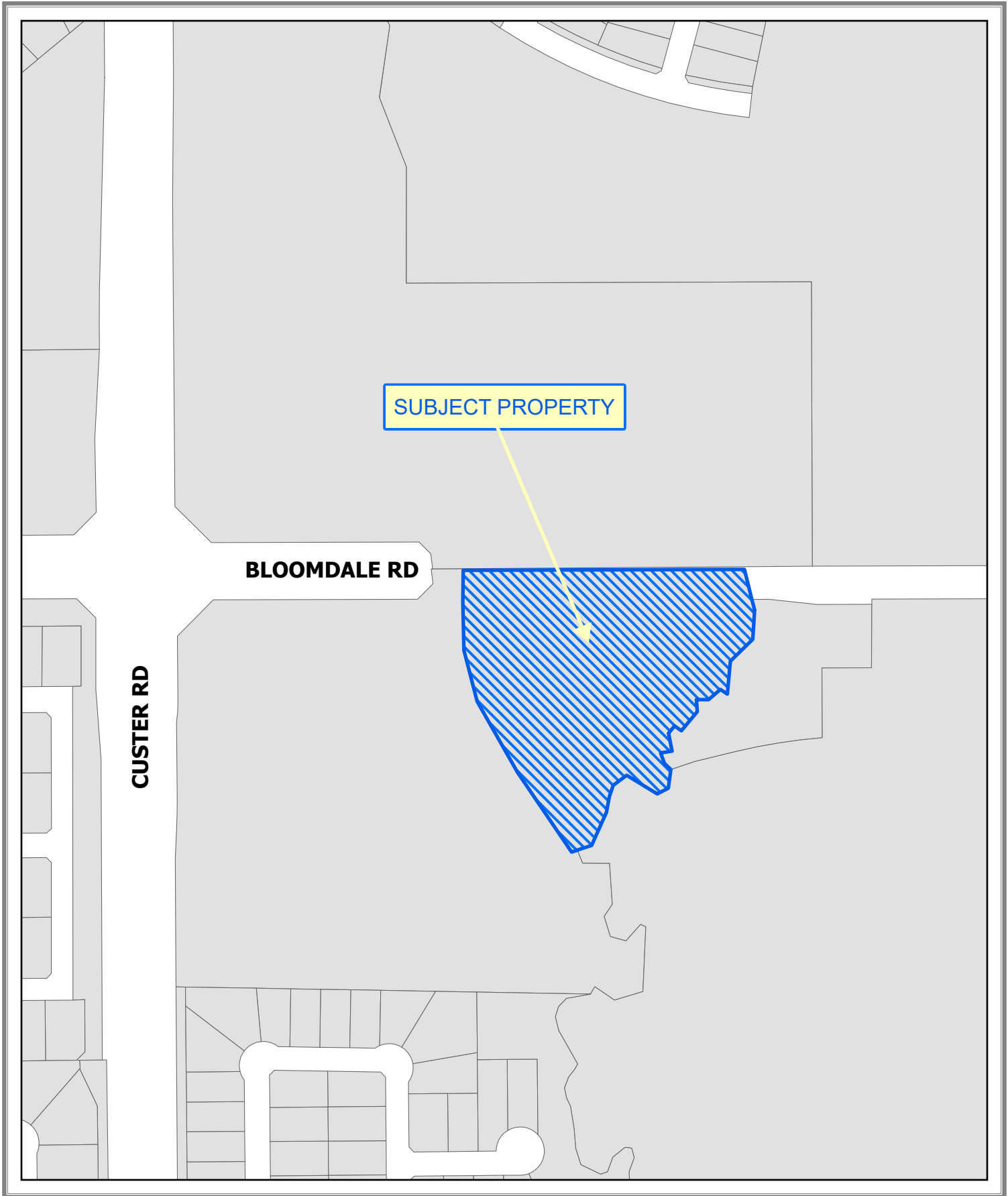
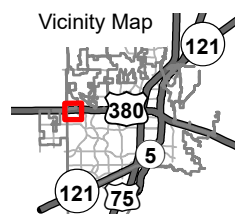


Document Path: Y:\\_Engineering\EngGIS\Projects04\_LocationMaps\56\_AGREEMENT2023-0021\LocationMap\_AGREEMENT2023-0021.aprx



**Location Map**

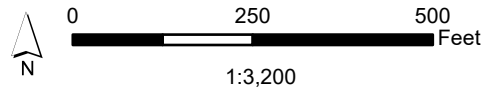
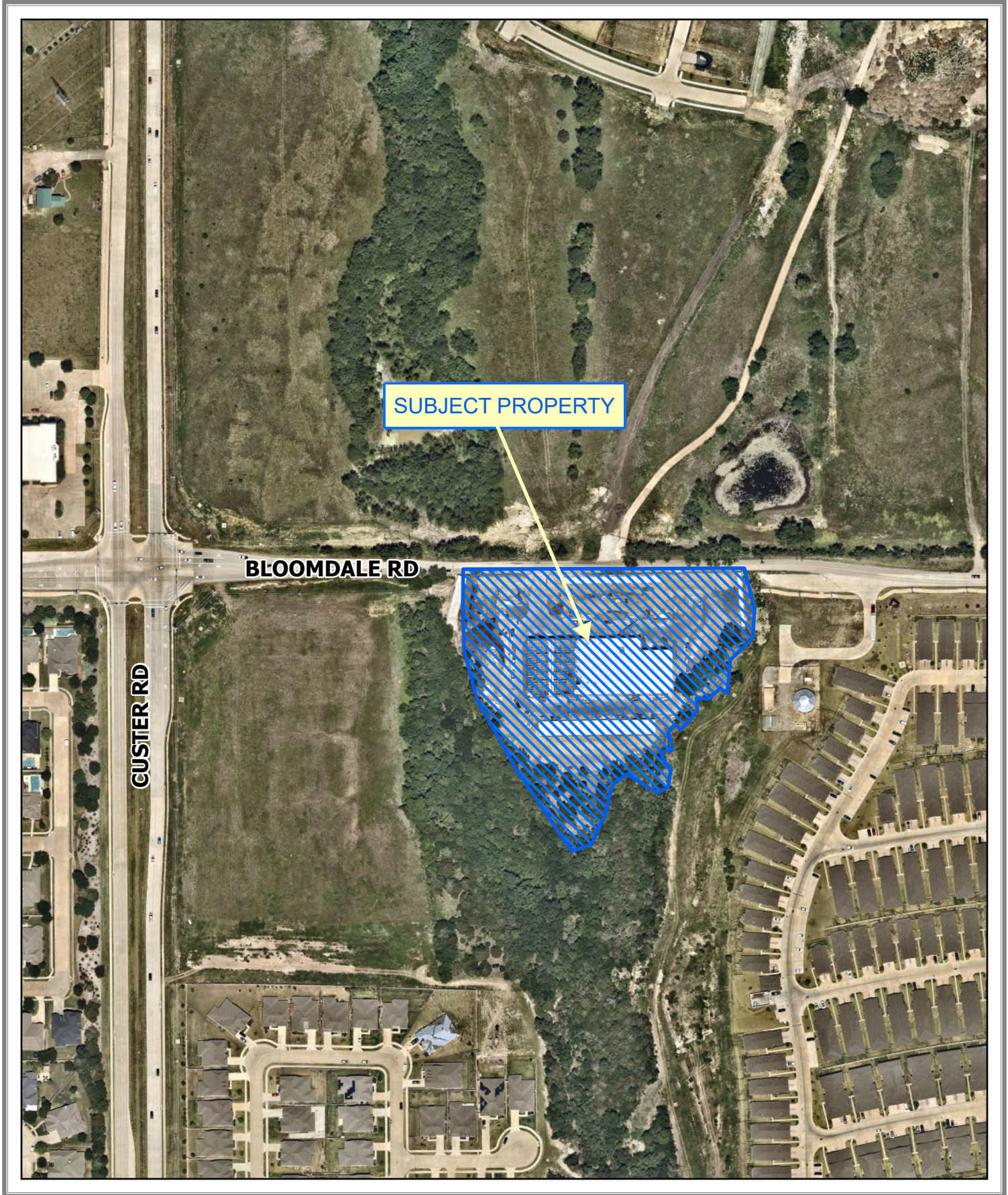
Roadway Impact Fee Reimbursement  
and Developer Participation Agreement  
for Bloomdale Self Storage  
(AGREEMENT2023-0021)



Source: Engineering GIS  
Date: 6/1/2026

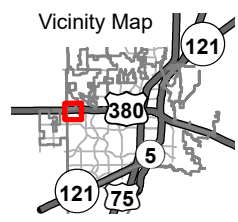
DISCLAIMER: This map and information contained in it were developed exclusively for use by the City of McKinney. Any use or reliance on this map by anyone else is at that party's risk and without liability to the City of McKinney, its officials or employees for any discrepancies, errors, or variances which may exist.

Document Path: Y:\\_Engineering\EngGIS\Projects04\_LocationMaps\66\_AGREEMENT2023-0021\LocationMap\_AGREEMENT2023-0021.aprx



**Location Map**

Roadway Impact Fee Reimbursement  
and Developer Participation Agreement  
for Bloomdale Self Storage  
(AGREEMENT2023-0021)



Source: Engineering GIS  
Date: 6/1/2026

DISCLAIMER: This map and information contained in it were developed exclusively for use by the City of McKinney. Any use or reliance on this map by anyone else is at that party's risk and without liability to the City of McKinney, its officials or employees for any discrepancies, errors, or variances which may exist.