

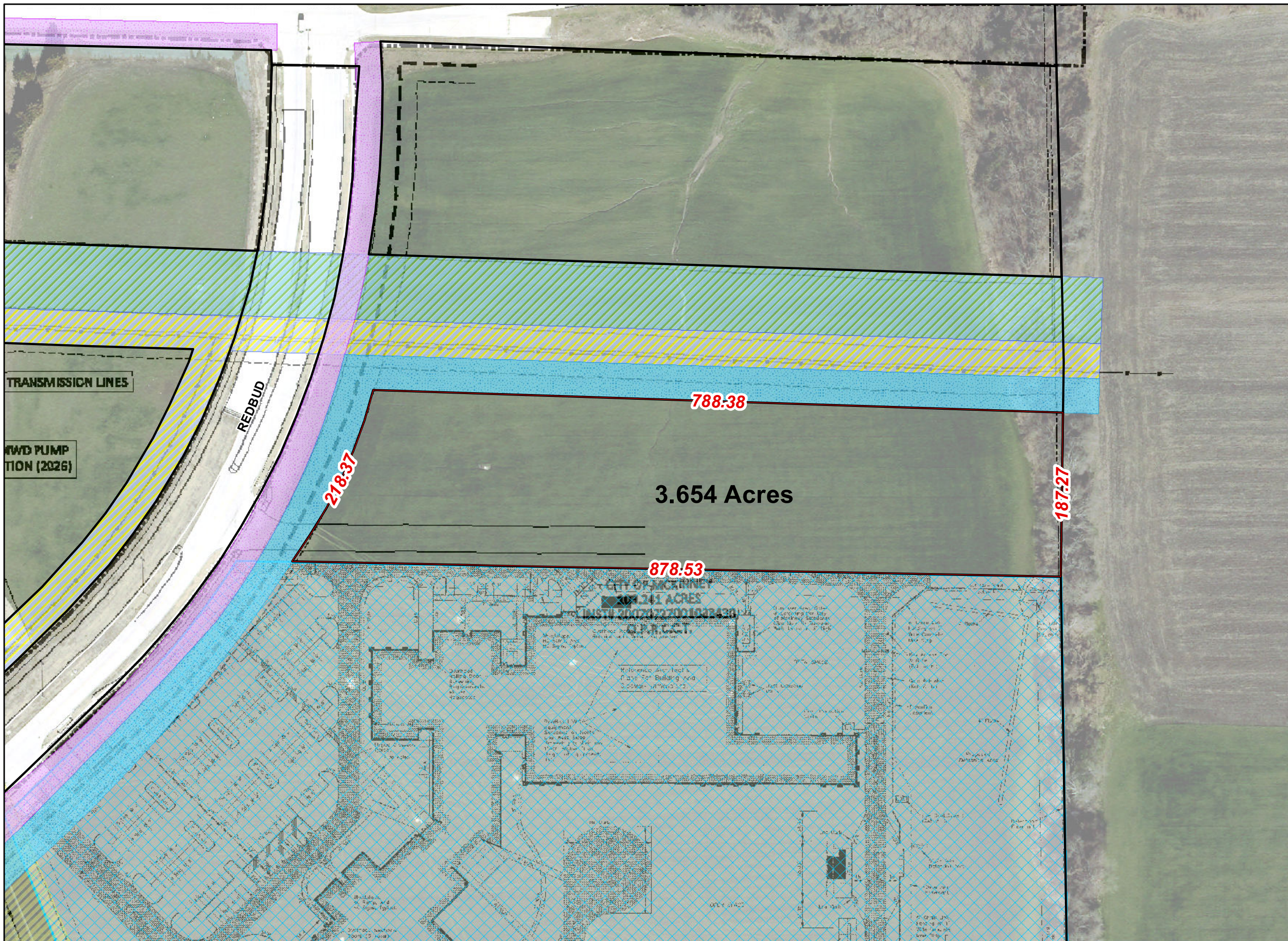
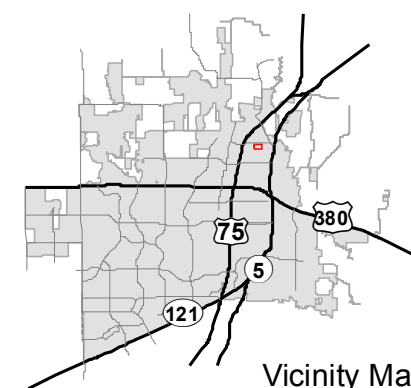


Bloomdale & Redbud Future Firestation

***FOR DISCUSSION
PURPOSES ONLY***

- McKinney 40' Water
- McKinney Wastewater
- NTMWD 40' Water
- City of Irving 75' Water
- Oncor 100' Easement
- NTMWD Pump Station
- Redbud Pump Station
- Collin College

0 60 120 Feet



DISCLAIMER: This map and information contained in it were developed exclusively for use by the City of McKinney. Any use or reliance on this map by anyone else is at that party's risk and without liability to the City of McKinney, its officials or employees for any discrepancies, errors, or variances which may exist.