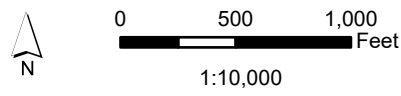
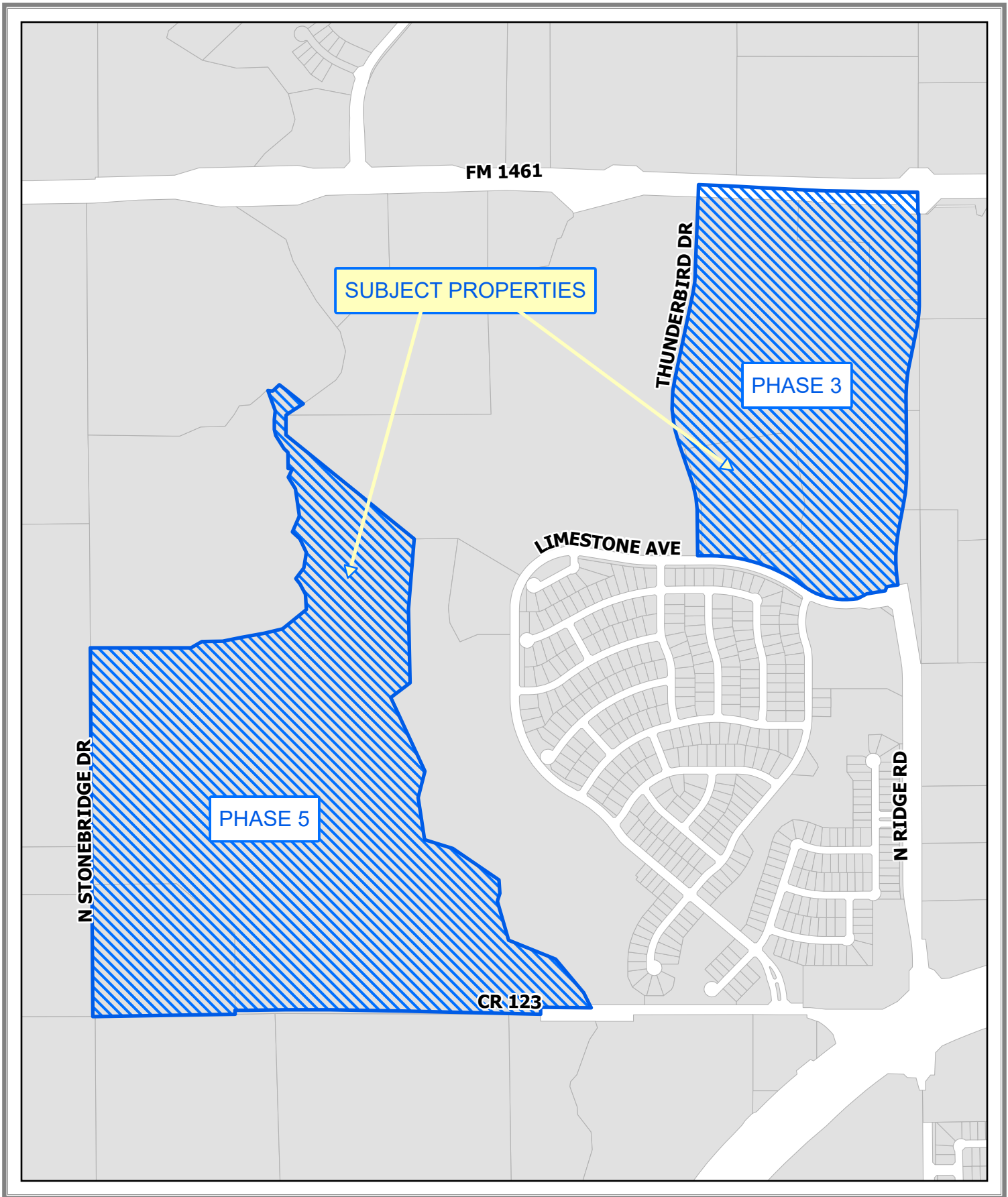
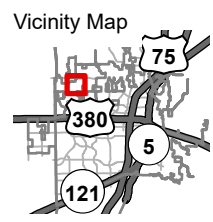


Document Path: Y:_Engineering\EngGIS\Projects\04_Agreement\2025-0022\AGREEMENT2025-0022.aprx



Location Map

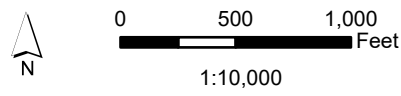
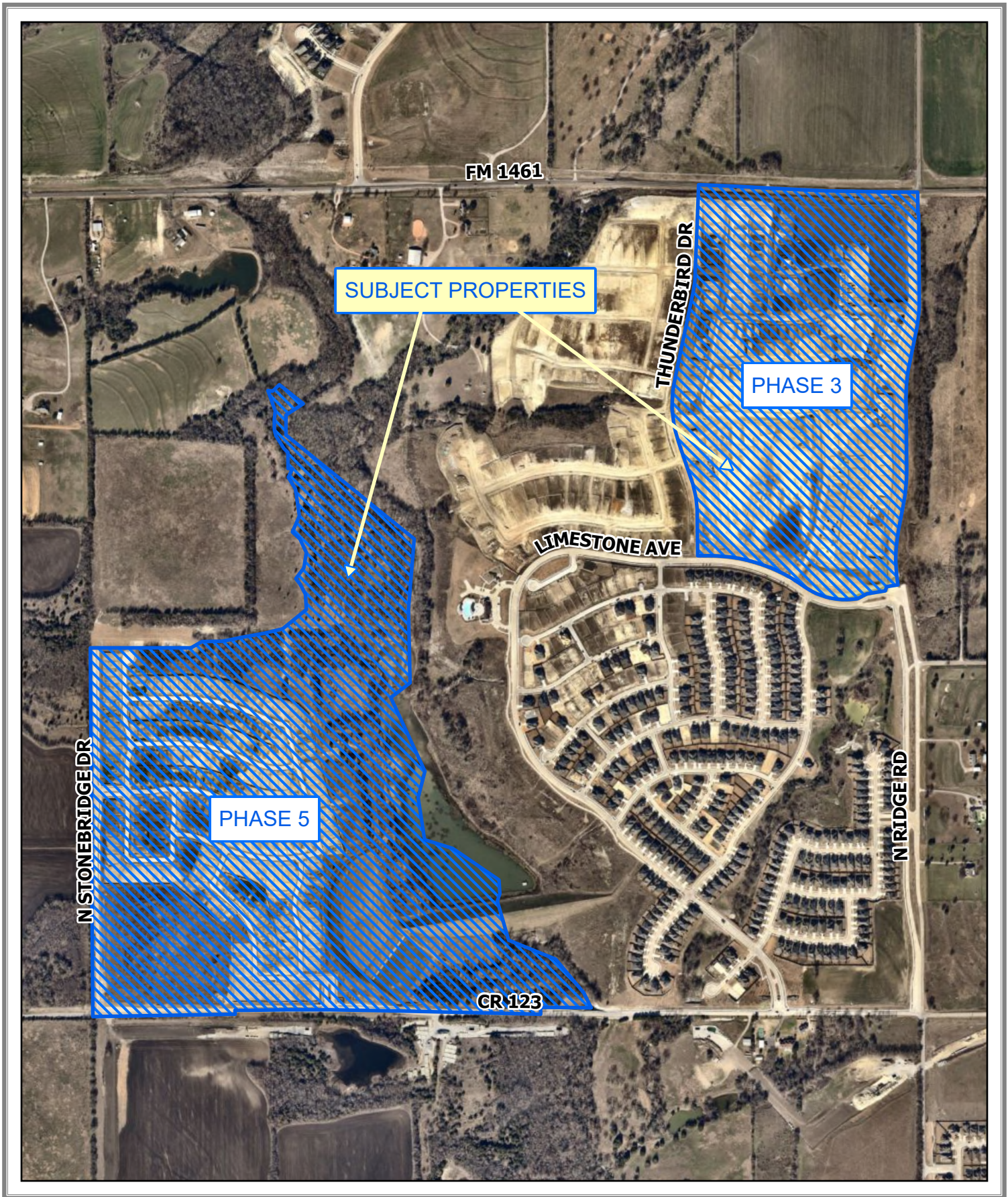
Highland Lakes Phases 3 and 5
 Roadway Impact Fee Credit Agreement
 (AGREEMENT2025-0022)



Source: Engineering GIS
 Date: 3/29/2026

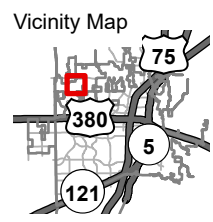
DISCLAIMER: This map and information contained in it were developed exclusively for use by the City of McKinney. Any use or reliance on this map by anyone else is at that party's risk and without liability to the City of McKinney, its officials or employees for any discrepancies, errors, or variances which may exist.

Document Path: Y:_Engineering\EngGIS\Projects\04_Agreement\2025-0022\AGREEMENT2025-0022.aprx



Location Map

Highland Lakes Phases 3 and 5
 Roadway Impact Fee Credit Agreement
 (AGREEMENT2025-0022)



Source: Engineering GIS
 Date: 3/29/2026

DISCLAIMER: This map and information contained in it were developed exclusively for use by the City of McKinney. Any use or reliance on this map by anyone else is at that party's risk and without liability to the City of McKinney, its officials or employees for any discrepancies, errors, or variances which may exist.