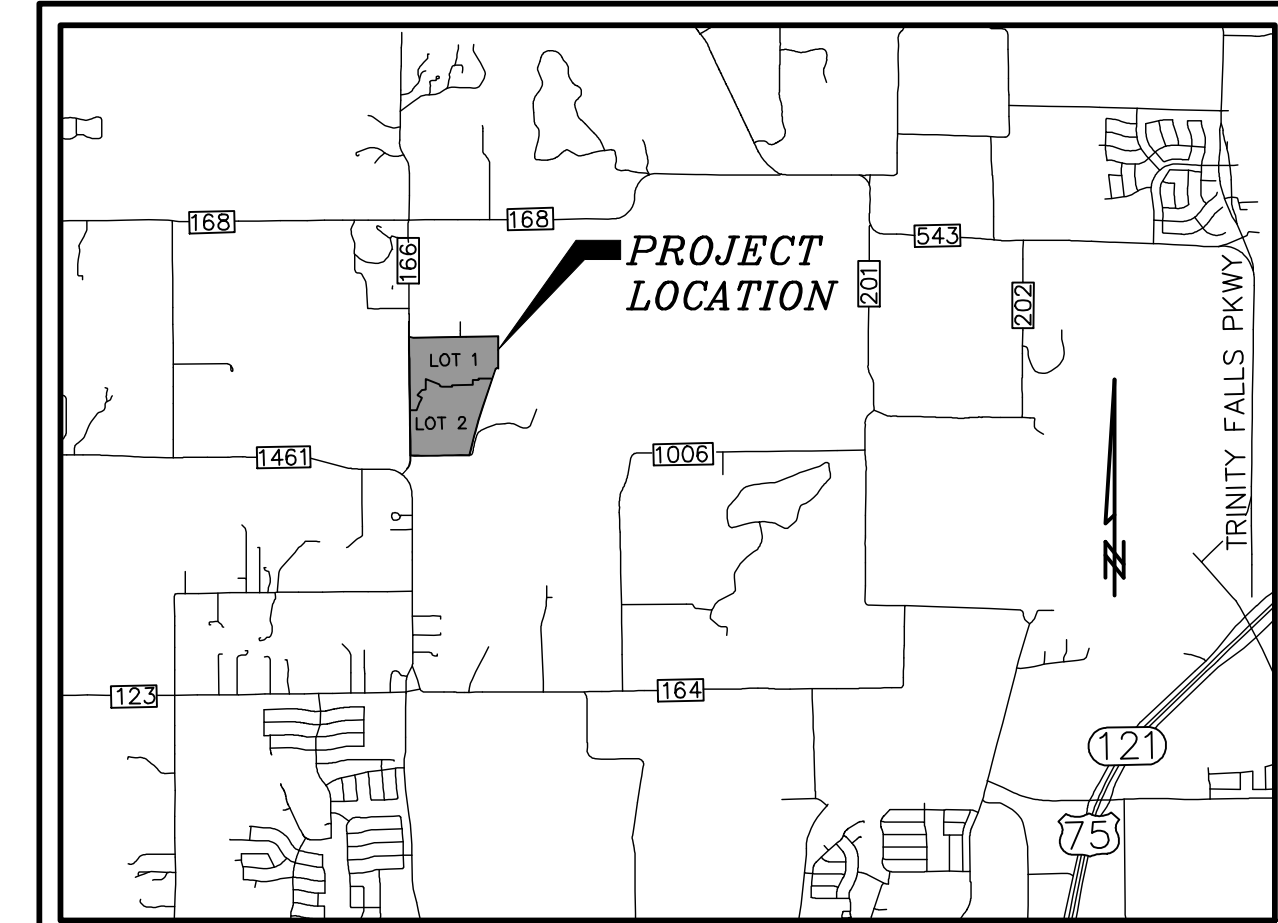


PRINTED: 9/18/2023 STB FILE: WIER-SURVEY.STB LAST SAVED: 9/18/2023 4:19 PM SAVED BY: RENEW FILE: PRELIMINARY-FINAL-PLAT-20054.DWG

**R.O.W. DEDICATION  
0.652 ACRES  
(28,388 SQ. FT.)**

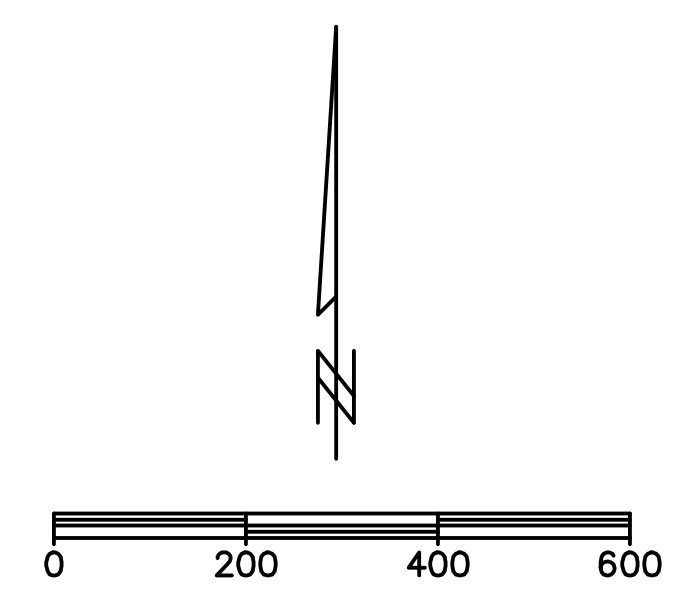
**LOT 1, BLOCK A  
51.328 ACRES  
(2,235,866 SQ. FT.)**

**LOT 2, BLOCK A  
46.699 ACRES  
(2,034,212 SQ. FT.)**



VICINITY MAP  
NOT TO SCALE

**PRELIMINARY  
FOR REVIEW PURPOSES ONLY**  
THIS DOCUMENT SHALL NOT BE RECORDED FOR ANY  
PURPOSE AND SHALL NOT BE USED OR VIEWED OR  
RELIED UPON AS A FINAL SURVEY DOCUMENT.



NOTES:  
THE PURPOSE OF THIS PROPOSED PRELIMINARY-FINAL PLAT IS TO PLAT A PREVIOUSLY UN-PLATTED TRACT OF LAND.  
ALL PROPOSED LOTS SITUATED ENTIRELY OUTSIDE THE CITY'S CORPORATE LIMITS AND WITHIN THE CITY'S EXTRATERRITORIAL JURISDICTION COMPLY WITH THE SUBDIVISION ORDINANCE.

LOT 1, BLOCK A	51.328 ACRES	2,235,866 SF.
LOT 2, BLOCK A	46.699 ACRES	2,034,212 SF.
C.R. 166 R.O.W. DEDICATION	0.652 ACRES	28,388 SF.
<b>TOTAL</b>	<b>98.679 ACRES</b>	<b>4,298,466 SF.</b>

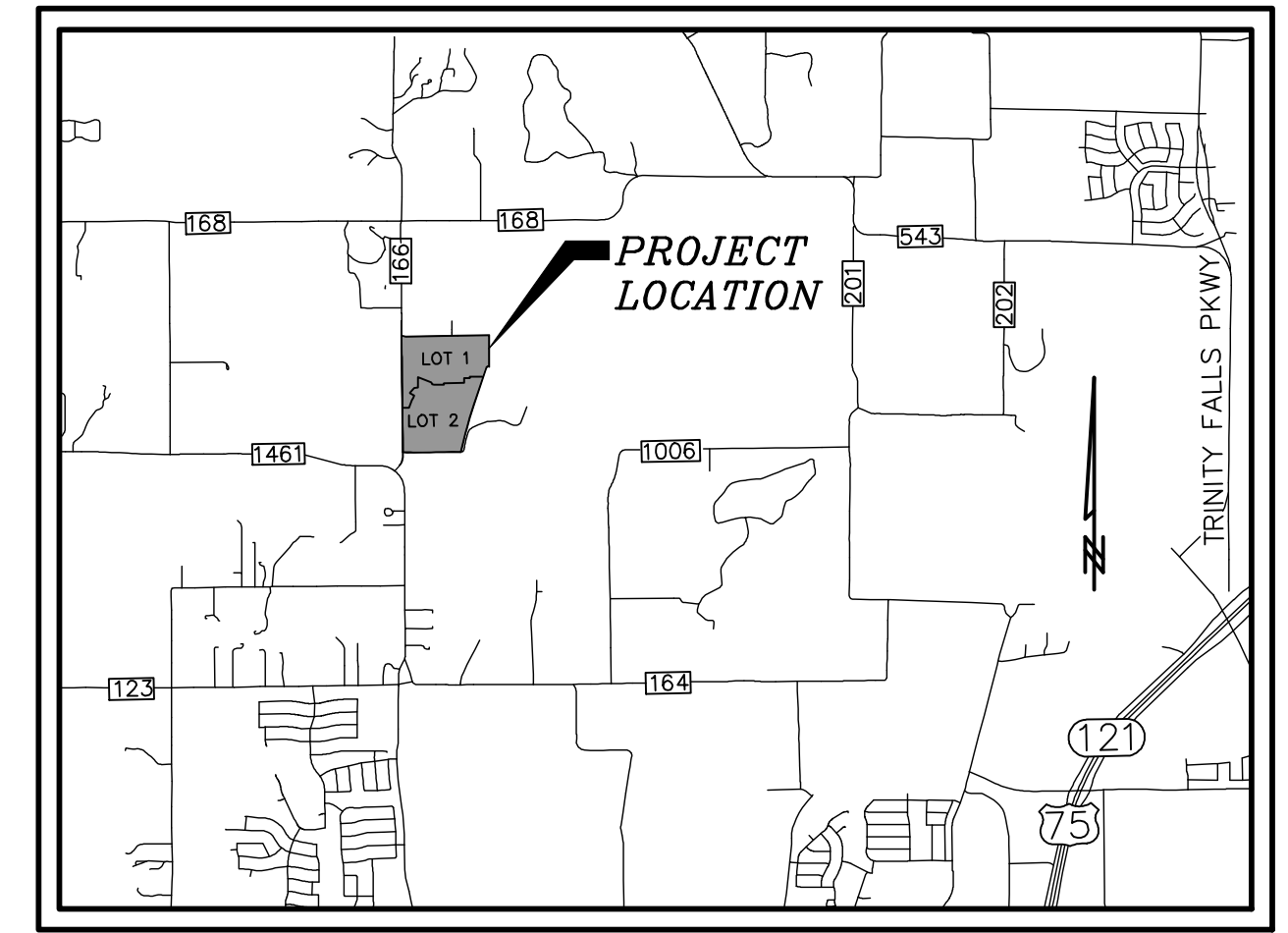
**OWNER/DEVELOPER**  
6400 LAKE FOREST INVESTMENTS, LLC  
2505 N STATE HWY 360, SUITE 800  
GRAND PRAIRIE, TX 75050  
CONTACT: MATTHEW HILES  
PH: (972) 471-8700

**ENGINEER / SURVEYOR**  
WIER & ASSOCIATES, INC.  
2201 E. LAMAR BLVD., SUITE 200E ARLINGTON, TEXAS 76006  
ARLINGTON, TEXAS 76006  
CONTACT: CARLO SILVESTRI, P.E.  
PH: (817) 467-7700  
FAX: (817) 467-7713  
EMAIL: CarloS@WierAssociates.com

PREPARED BY:  
**WIA WIER & ASSOCIATES, INC.**  
ENGINEERS SURVEYORS LAND PLANNERS  
2201 E. LAMAR BLVD., SUITE 200E ARLINGTON, TEXAS 76006 METRO (817) 467-7700  
Texas Firm Registration No. F-2776 www.WierAssociates.com  
Texas Board of Professional Land Surveying Registration No. 10033900



MATCH LINE - SEE SHEET 2



VICINITY MAP  
NOT TO SCALE

**LOT 1, BLOCK A**  
51.328 ACRES  
(2,235,866 SQ. FT.)

**LOT 2, BLOCK A**  
46.699 ACRES  
(2,034,212 SQ. FT.)

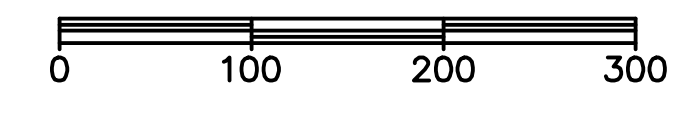
**R.O.W. DEDICATION**  
0.652 ACRES  
(28,388 SQ. FT.)

**\* LEGEND \***

C.A.	COMMON AREA
IRF	IRON ROD FOUND
IRS	IRON ROD SET
(CM)	CONTROLLING MONUMENT
XF	"X"-CUT FOUND
"WIER"	WIER & ASSOC INC
D.R.C.C.T.	DEED RECORDS, COLLIN COUNTY, TEXAS
P.R.C.C.T.	PLAT RECORDS, COLLIN COUNTY, TEXAS
O.P.R.C.C.T.	OFFICIAL PUBLIC RECORDS, COLLIN COUNTY, TEXAS

**PRELIMINARY**  
**FOR REVIEW PURPOSES ONLY**  
THIS DOCUMENT SHALL NOT BE RECORDED FOR ANY PURPOSE AND SHALL NOT BE USED OR VIEWED OR RELIED UPON AS A FINAL SURVEY DOCUMENT.

NOTES:  
THE PURPOSE OF THIS PROPOSED PRELIMINARY-FINAL PLAT IS TO PLAT A PREVIOUSLY UN-PLATTED TRACT OF LAND.  
ALL PROPOSED LOTS SITUATED ENTIRELY OUTSIDE THE CITY'S CORPORATE LIMITS AND WITHIN THE CITY'S EXTRATERRITORIAL JURISDICTION COMPLY WITH THE SUBDIVISION ORDINANCE.

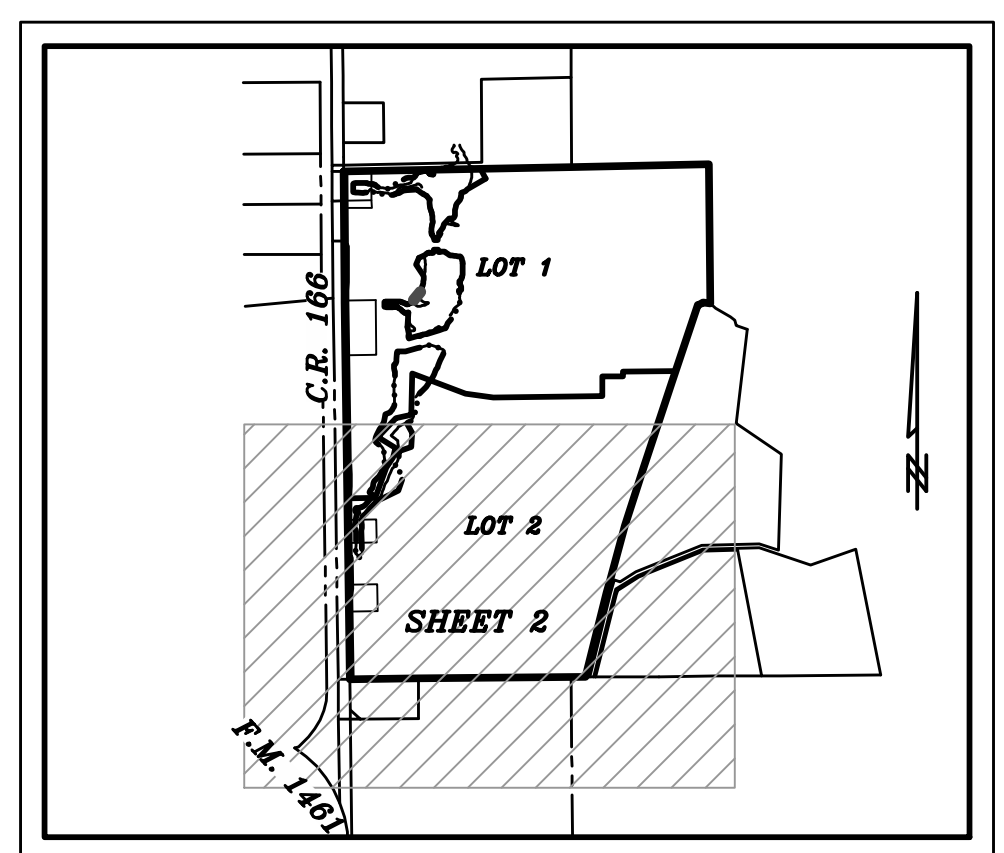


LOT 1, BLOCK A	51.328 ACRES	2,235,866 SF.
LOT 2, BLOCK A	46.699 ACRES	2,034,212 SF.
C.R. 166 R.O.W. DEDICATION	0.652 ACRES	28,388 SF.
<b>TOTAL</b>	<b>98.679 ACRES</b>	<b>4,298,466 SF.</b>

**OWNER/DEVELOPER**  
6400 LAKE FOREST INVESTMENTS, LLC  
2505 N STATE HWY 360, SUITE 800  
GRAND PRAIRIE, TX 75050  
CONTACT: MATTHEW HILES  
PH: (972) 471-8700

**ENGINEER / SURVEYOR**  
WIER & ASSOCIATES, INC.  
2201 E. LAMAR BLVD., SUITE 200E  
ARLINGTON, TEXAS 76006  
CONTACT: CARLO SILVESTRI, P.E.  
PH: (817) 467-7700  
FAX: (817) 467-7713  
EMAIL: CarloS@WierAssociates.com

PREPARED BY:  
**WIA WIER & ASSOCIATES, INC.**  
ENGINEERS SURVEYORS LAND PLANNERS  
2201 E. LAMAR BLVD., SUITE 200E ARLINGTON, TEXAS 76006 METRO (817) 467-7700  
Texas Firm Registration No. F-2776 www.WierAssociates.com  
Texas Board of Professional Land Surveying Registration No. 10033900



KEY MAP  
NOT TO SCALE

PRINTED: 9/18/2023 STB FILE: WIER-SURVEY.STB LAST SAVED: 9/18/2023 4:19 PM SAVED BY: RENEW FILE: PRELIMINARY-FINAL-PLAT-20054.DWG

