

# Roy and Helen Hall Library: Everyday Destination



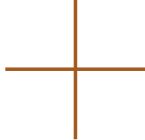
# Roy and Helen Hall Project Vision



VIBRANT COMMUNITY HUB



GATEWAY TO DOWNTOWN



EXTENDED DOWNTOWN  
EXPERIENCE



FUTURE READY



A LIBRARY FOR THE NEXT  
GENERATION



AN EVERYDAY DESTINATION

# CURRENT LOCATION ASSETS

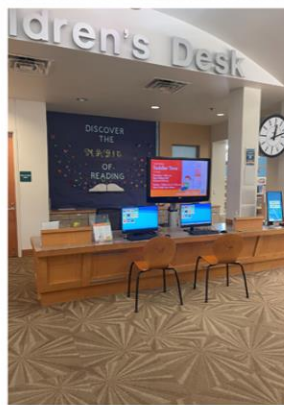
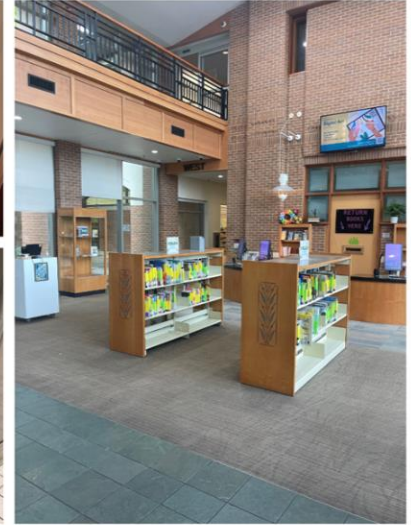
Size of the building and courtyard space.

Near downtown- a natural for large events.

Building allows for creation of experiences not offered anywhere else.

## Current Obstacles

- 5 rooms - no line of sight
- Staff are separated
- Condition of flooring & bathrooms
- Study rooms are wrong sizes
- Lighting problems throughout
- Elevator is under sized
- Lack of power throughout building
- Not designed for maintenance

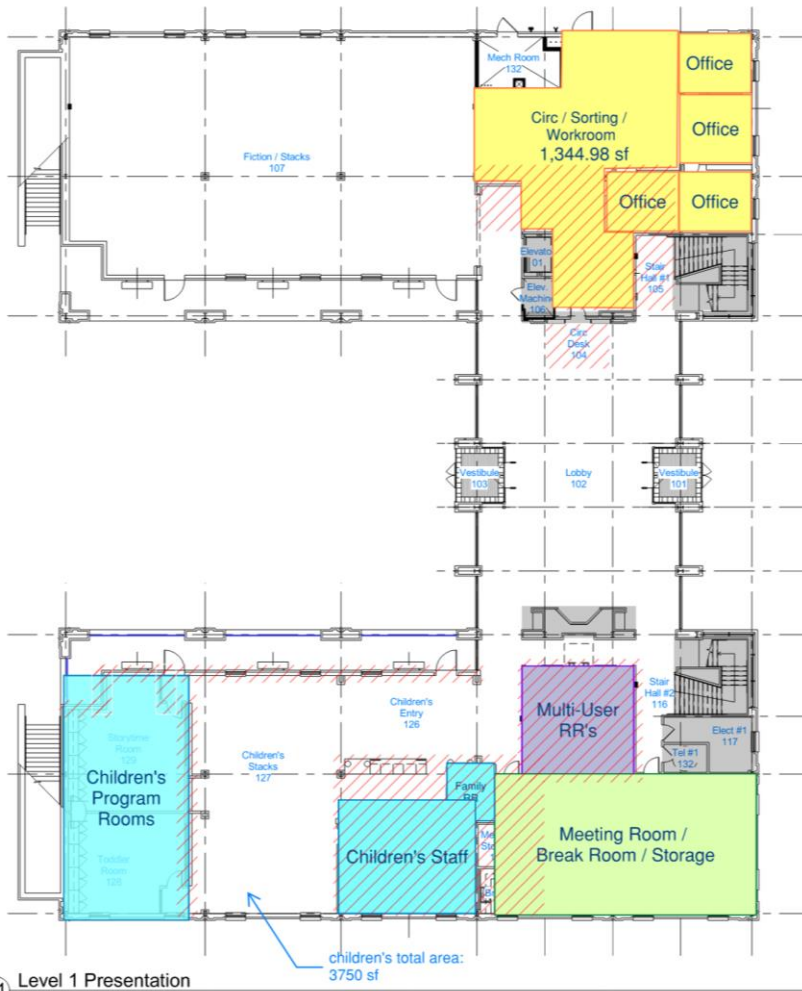


## Targeted Opportunities

- Expanded learning experiences
- Youth and teen specific spaces
- Improved indoor/outdoor flow
- Updated technologies
- Increased public meeting space
- Local history center



# First Floor Existing

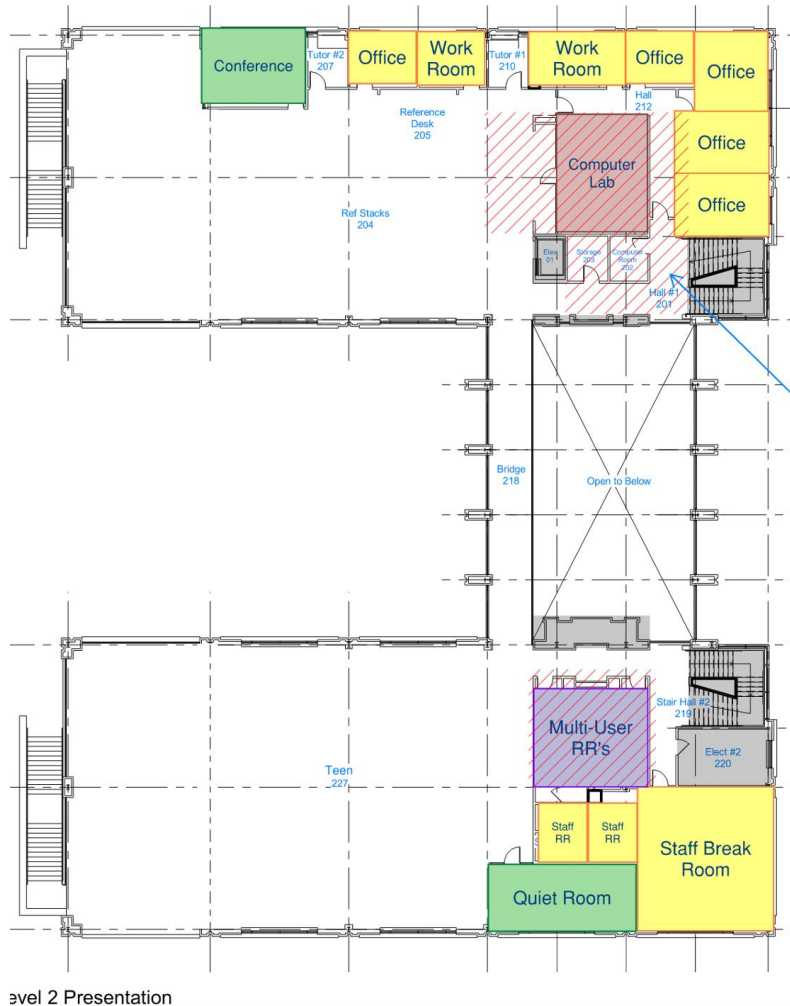


01 Level 1 Presentation  
3/64" = 1'-0"

# First Floor Draft



# Second Floor Existing



Level 2 Presentation  
 1/64" = 1'-0"

# Second Floor Draft

