

Zipline in McKinney, TX



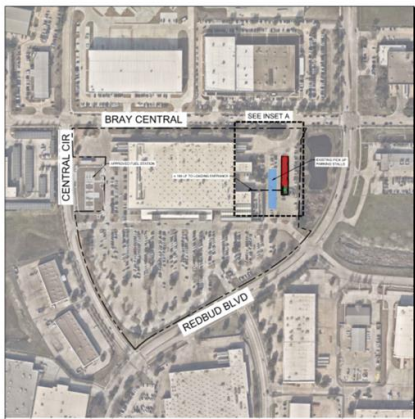
Planning & Zoning Commission
February 2025



Walmart Introduction

Kimley Horn Site Plan Review

Kimley-Horn Site Plan Review



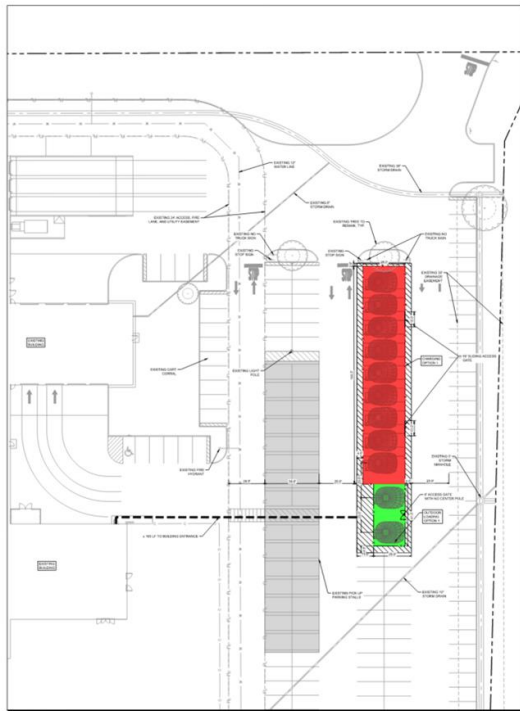
NOTES

SITE DATA TABLE	
GENERAL SITE DATA	WALMART STORE, 10000 S. REDBUD BLVD, SUITE 100, MCKINNEY, TX 75069
DATE SUBMITTED	10/20/2023
PROJECTED DATE OF COMPLETION	12/31/2023
PROJECTED DATE OF OCCUPANCY	12/31/2023
PROJECTED DATE OF POSSESSION	12/31/2023
PROJECTED DATE OF CONSTRUCTION COMPLETE	12/31/2023

BASE DATA TABLE - CONSTRUCTION INFORMATION - EXISTING MATERIAL, COLOR



BASE DATA TABLE - CONSTRUCTION INFORMATION - EXISTING MATERIAL, COLOR



INSET A
SCALE: 1"=20'

WALMART BUILDING INFO		PARKING INFORMATION									
		AHU PARKING REQUIRED	WALMART PARKING REQUIRED	REGULAR PARKING STALLS PROVIDED	OSP PARKING STALLS PROVIDED	ZIPLINE PARKING STALLS REMOVED	ADA PARKING STALLS PROVIDED	CART CORRAL STALLS PROVIDED	TOTAL STALLS PROVIDED	TOTAL AHU PARKING RATIO	TOTAL WALMART PARKING RATIO
EXISTING		206,550 SF	826 SPACES 1,000/250 SF	826 SPACES 4,000/1,000 SF	947	30	0	21	998	1.21/250 SF	4.83/1,000 SF
PROPOSED		206,550 SF	826 SPACES 1,000/250 SF	826 SPACES 4,000/1,000 SF	907	30	40	21	958	1.16/250 SF	4.64/1,000 SF

CALCULATED INFORMATION NOTES:
1. EXISTING PARKING COUNTS ARE BASED ON ORIGINAL CONSTRUCTION PLANS AND A REVIEW OF AVAILABLE AERIAL PHOTOGRAPHS.
2. PARKING SPACES OCCUPIED BY CART CORRALS AND ZIPLINE HAVE BEEN EXCLUDED FROM THE PARKING COUNTS AND PARKING RATIOS.
3. PARKING AND STORAGE OF VEHICLES, EQUIPMENT, OR STAGING AREAS OUTSIDE OF THE FENCED AREA IS NOT ALLOWED.
4. REQUIRED AHU PARKING FROM CHAPTER-146-ZONING-REGULATIONS-SECTION 146-130 VEHICLE PARKING OF MCKINNEY CITY CODE

DESIGN / CODE SUMMARY

REDUCTION OF PARKING STALLS:
OPTION 1 - 40 STALLS

ENTITLEMENT SUMMARY:
- PORTFOLIO HAS NOT REVIEWED FOR ECR REQUIREMENTS
- NO CODE CALL HAS BEEN SET FOR THIS SITE
- BUILDING SQUARE FOOTAGE IS BASED ON MFC PLANS THAT IS DIFFERENT FROM LUCERNE

DISCLAIMERS

PRELIMINARY DESIGN CONCEPT ONLY

WALMART CONCEPTS HAVE NOT REVIEWED TO VERIFY APPROVAL AS OF 10/20/2023

SCOPE TRIP: MCKINNEY
PROJECTED ENTITLEMENT SUBMITTAL: MCKINNEY
PROJECTED ENTITLEMENT APPROVAL: MCKINNEY
PROJECTED PHD: MCKINNEY
PROJECTED PHD APPROVAL: MCKINNEY
POSSESSION DATE: MCKINNEY
CONSTRUCTION COMPLETE: MCKINNEY



3000R

#206-1007
MCKINNEY, TX

KimleyHorn

Zipline Drone Technology Overview

As seen in...

Q&A with the CEO of Zipline, the drone delivery company making moves in Dallas

The Dallas Morning News

"[Zipline] drone technology can meaningfully benefit communities and alleviate daily stresses."

Star-Telegram FORT WORTH



How you receive medicine and food in the future could involve Zipline drone technology

FOX

CBS NEWS THE WALL STREET JOURNAL.



DALLAS INNOVATES

The Kaufman  Herald The Princeton Herald

NEWS NATION

Texas Monthly

Zipline is the world's largest drone delivery service



1.2M+ commercial drone deliveries



1,700 deliveries daily;
one every 65 seconds



85M+ miles of autonomous flight



Zero-emission, sustainable delivery

Zipline helps communities everyday



Saves time



Safer roads



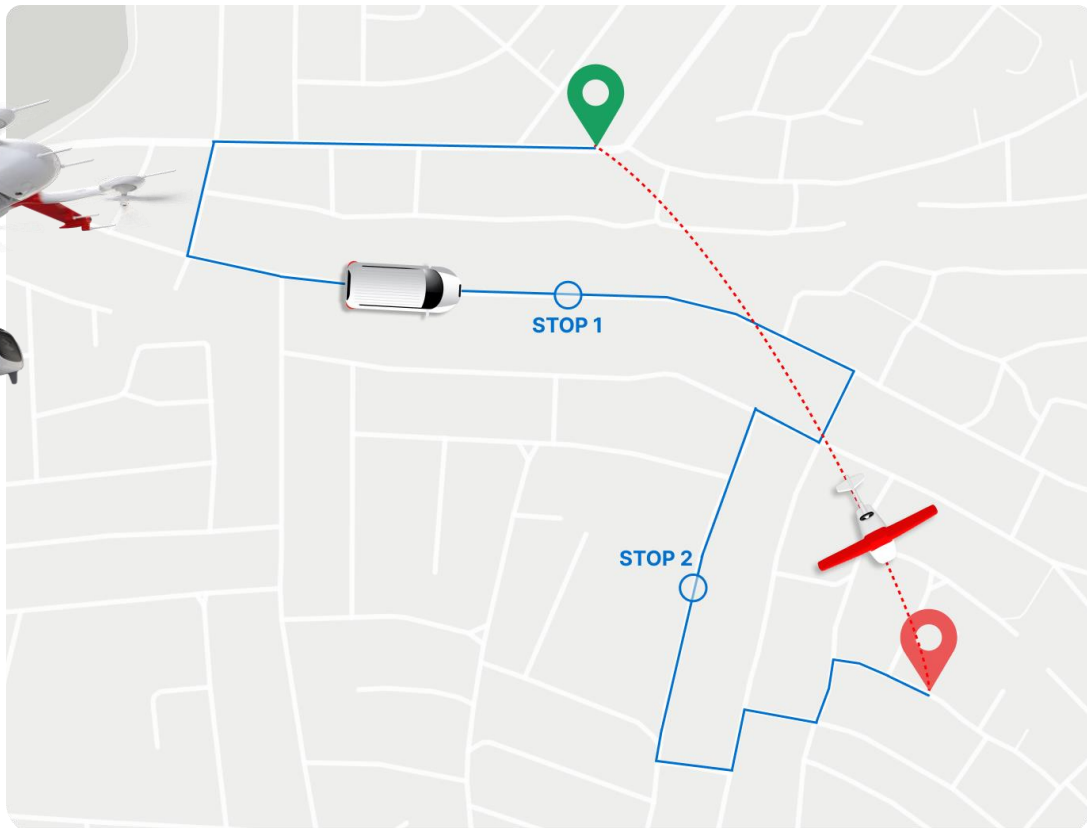
Reduced traffic



Economic opportunities



Improved access





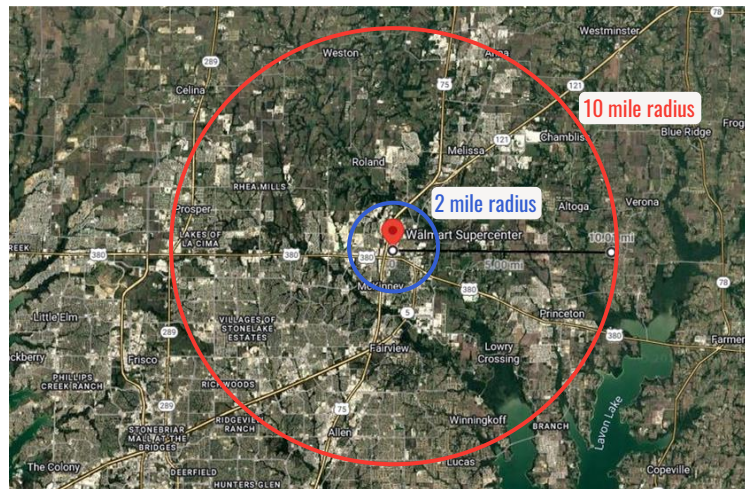
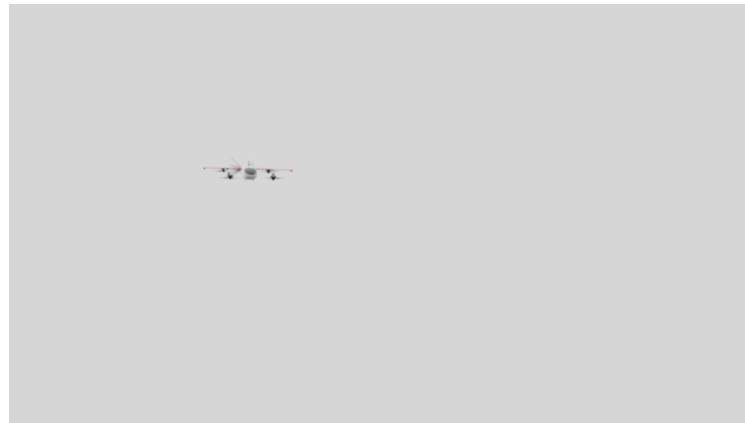
Our Zip platform

Technology Overview

Hyper-precise home delivery



- Fully Autonomous
- Delivery: Zip + ultra-precise delivery droid
- Payload: Up to 8 pounds
- Service Radius: Up to 10 miles service radius
- Speed: Up to 70mph
- Wingspan: 8 feet



A cute but mighty delivery droid



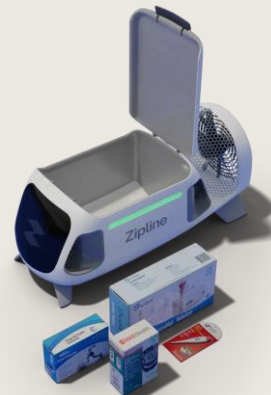
Food



Electronics



Grocery



Health & Wellness

Zips are quieter than common neighborhood sounds

Docking



100 ft away

Zip with no payload

53 dB(A)

Zip with max payload

64 dB(A)

Delivery



~300 ft



Zip delivery



At delivery point

<60 dB(A)

dB(A)

100

8X AS LOUD

JET FLYOVER AT 1000 FT

90

4X AS LOUD

PASSING MOTORCYCLE AT 15 FT

80

2X AS LOUD

FOOD BLENDER AT 3 FT

70

REFERENCE

TRUCK AT 50 FT

60

1/2 AS LOUD

GARBAGE DISPOSAL AT 3 FT

VACUUM CLEANER AT 10 FT

LAWN MOWER AT 100 FT

NORMAL CONVERSATION

CAR TRAFFIC AT 300 FT

50

1/4 AS LOUD

DISHWASHER NEXT ROOM

REFRIGERATOR NEXT ROOM

CONFERENCE ROOM

40

LIBRARY

30

RUSTLING LEAVES



Zipline has safely flown over 90 million miles



How we design

- Built-in critical system redundancies
- Two-part architecture
- Reliable materials



How we test

- Rigorously tested in extreme weather
- Extensive quality assurance and real-world testing



How we operate

- FAA certified just like major airlines
- Expert team tracks, manages, and maintains fleet 24/7

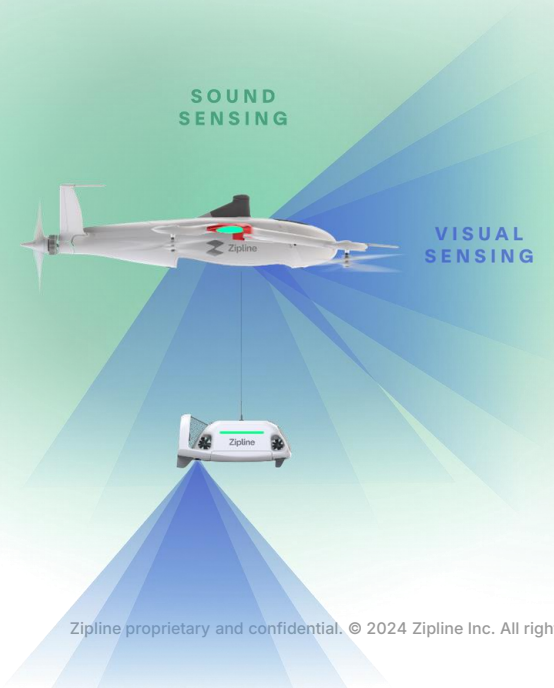
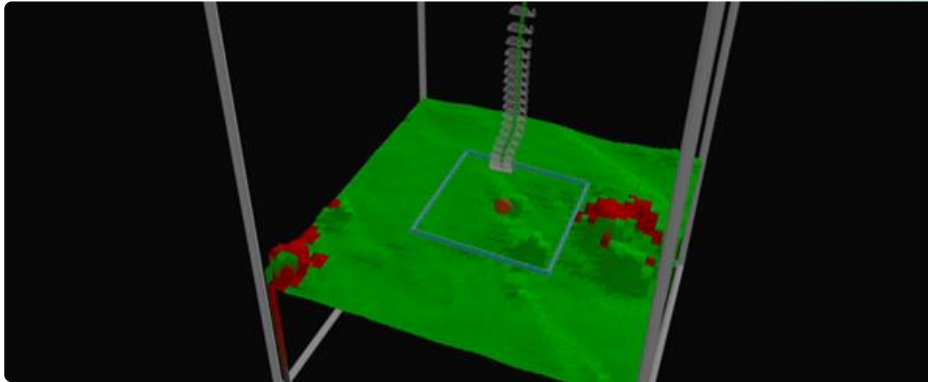


How we fly

- 500+ automated pre-flight safety inspections
- FlightIQ Autonomy and Perception System

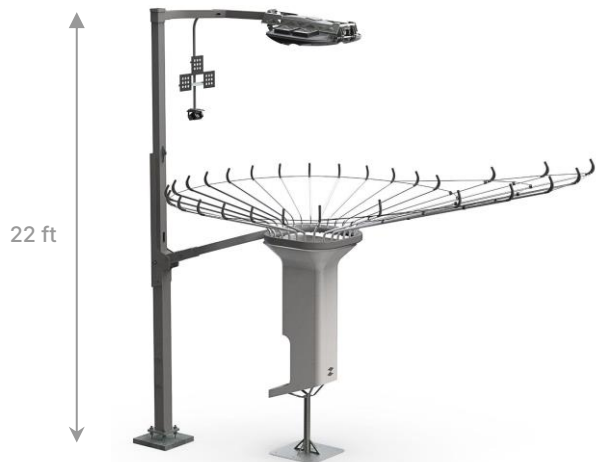
Zips use FlightIQ, our autonomy and perception suite that make flights and deliveries smarter and safer

- Designed for flight and delivery purposes
- Applies industry-standard tools to blur faces in visual data
- Cannot zoom or be pointed in a particular direction
- Does not identify individuals or read license plates



Site infrastructure – single & double dock towers

Single docks



Single Docking Structure with Kiosk (x2)

Double docks



Double Docking Charging Structure (x9)

Community engagement



thank you for coming in! I like
how you're not just "saying" to change
the world, but actually doing something to
change the world



Want to get in touch?

Email us at DFW@flyzipline.com. We'd love to hear from you!

Thank you!

