

Downtown Parking Management Pilot

Behavior Change Through
Real-Time Data Visualization

June 2, 2026



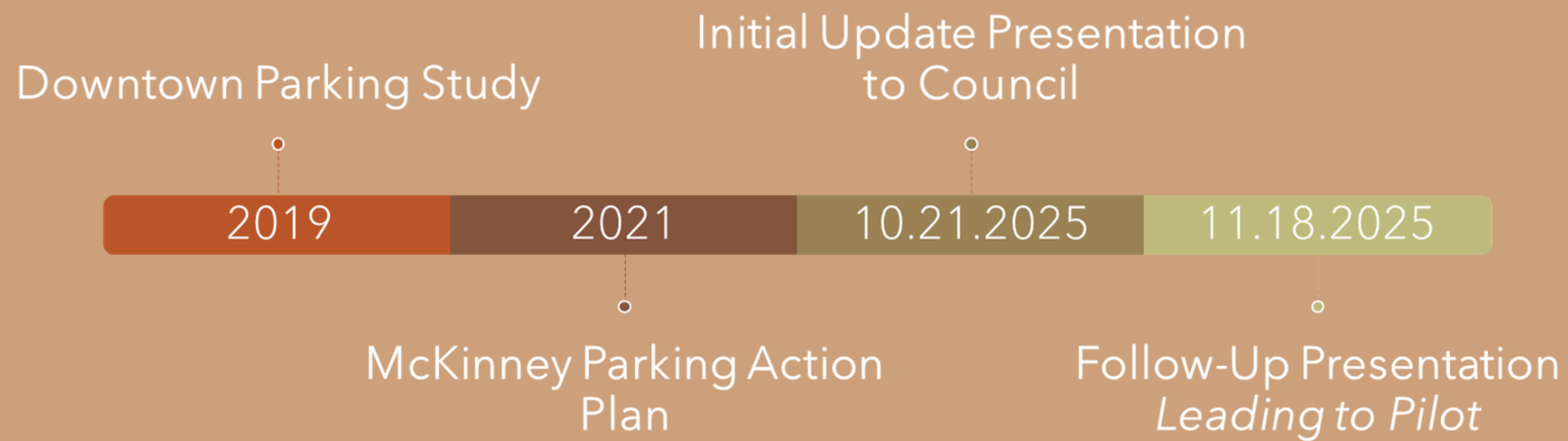
Agenda

- Background
- Solution and Methodology
- Pilot Preview
- Proposed Partnership
- Funding Request
- Questions?



Background

Timeline



Context

Problem

Parking Studies show adequate availability of parking spaces, patrons experience trouble finding a space - especially near their destination.

Solution

Patrons need *real-time* access to parking space availability data so that they can make informed decisions when parking.



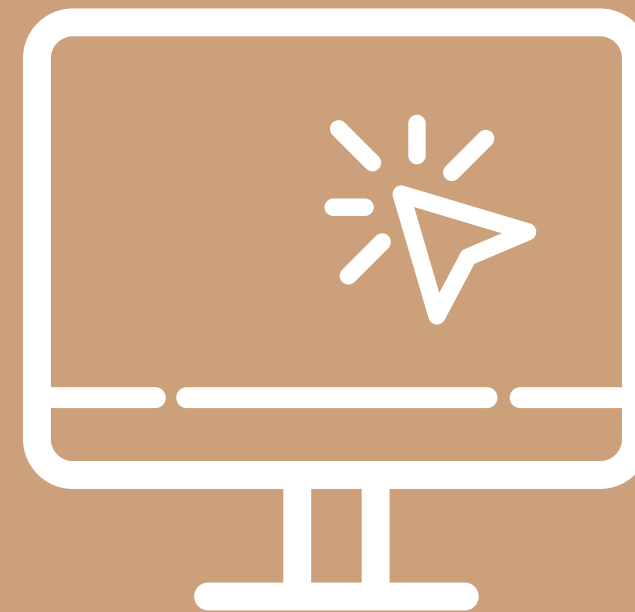
Solutions and Methodology

How will data be shared?

~~X~~ Mobile App



~~X~~ Website



Wayfinding/Space Availability Signs



Solutions and Methodology

How will data be collected?

Pucks/Sensors

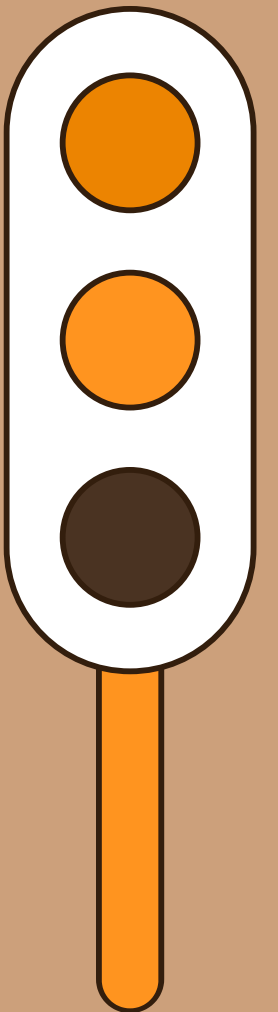
High Accuracy, Many Vendors

Hard to Maintain, One-Trick Pony

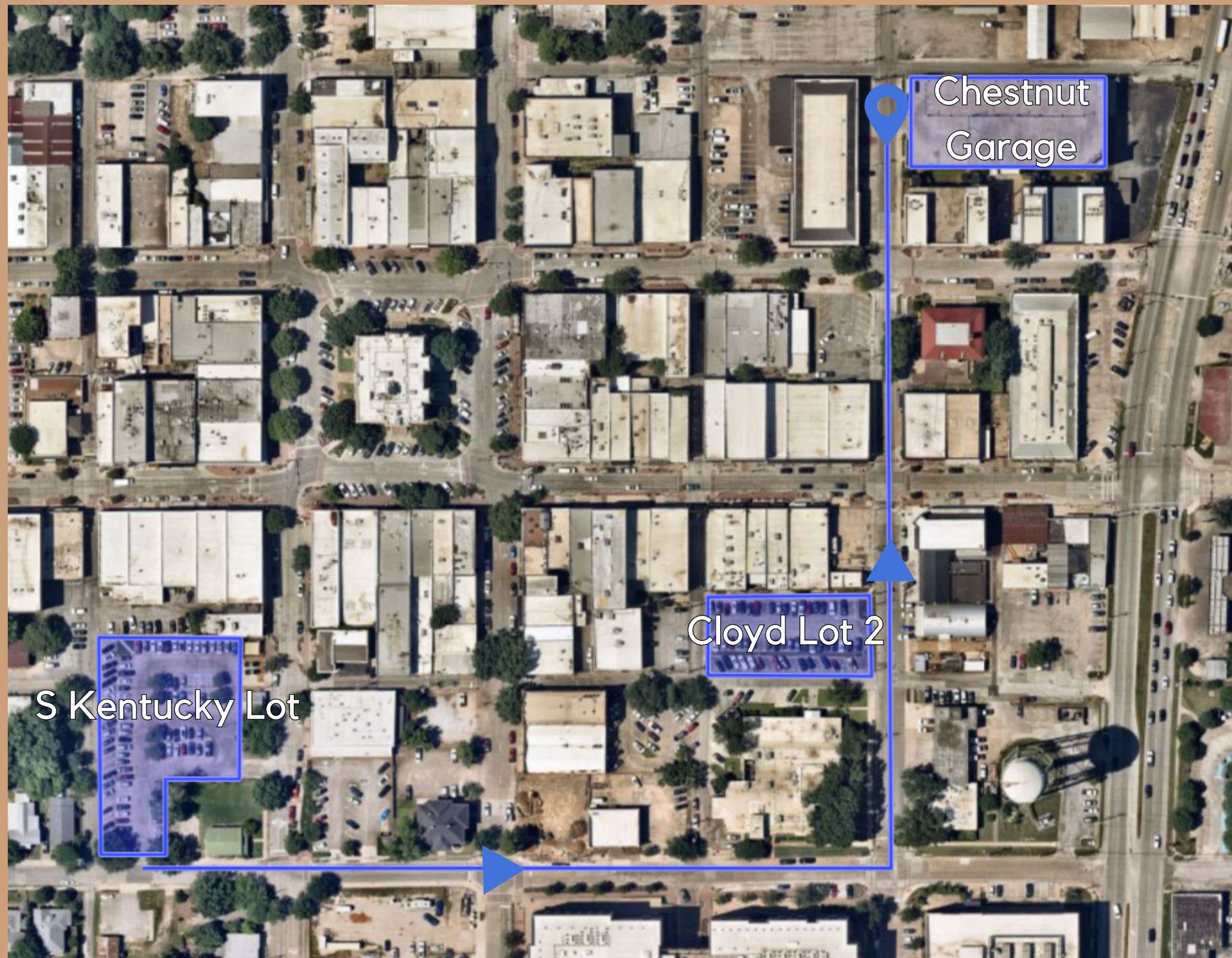
Computer Vision

Far Less Devices/Space, Hardware is not specific to one use-case

Weather/Obstructions Can Cause Lapse in Data



Proposed Pilot



Goal: Increase use of Chestnut garage utilizing real-time availability data.

Methodology: Provide real-time availability of spaces at pilot locations, and direct users to available parking.

Logistics and Partnership

Equipment and Software

- 360° Cameras + Local Computing
- Digital Availability/
Wayfinding Signs
- Digital Dashboard w/real-time
Parking Space Availability

Partnership



AMSYS Innovative Solutions is a leading global technology solutions provider focused on delivering cutting-edge products and services to a variety of industries



NVIDIA 2026
State and Local
Government
Partner of the
Year

Timeline

Timeline

Hardware and
Software Build-Out

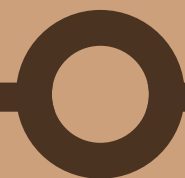
Establish
Baseline

Introduce Digital
Signs

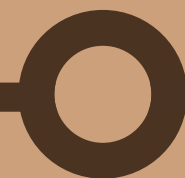
Summarize Results
and Report Back



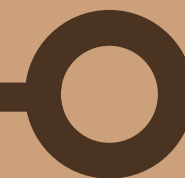
Months 0-3



Month 4



Months 5-6



Month 7

Costs

Funding

- Pilot Estimated Costs:
 - Hardware Costs: \$31,000
 - Software Costs: \$56,000
 - Professional Services: \$18,000
 - **Total Estimate: \$105,000**
- Requesting a lump sum not to exceed \$150,000

Questions?

