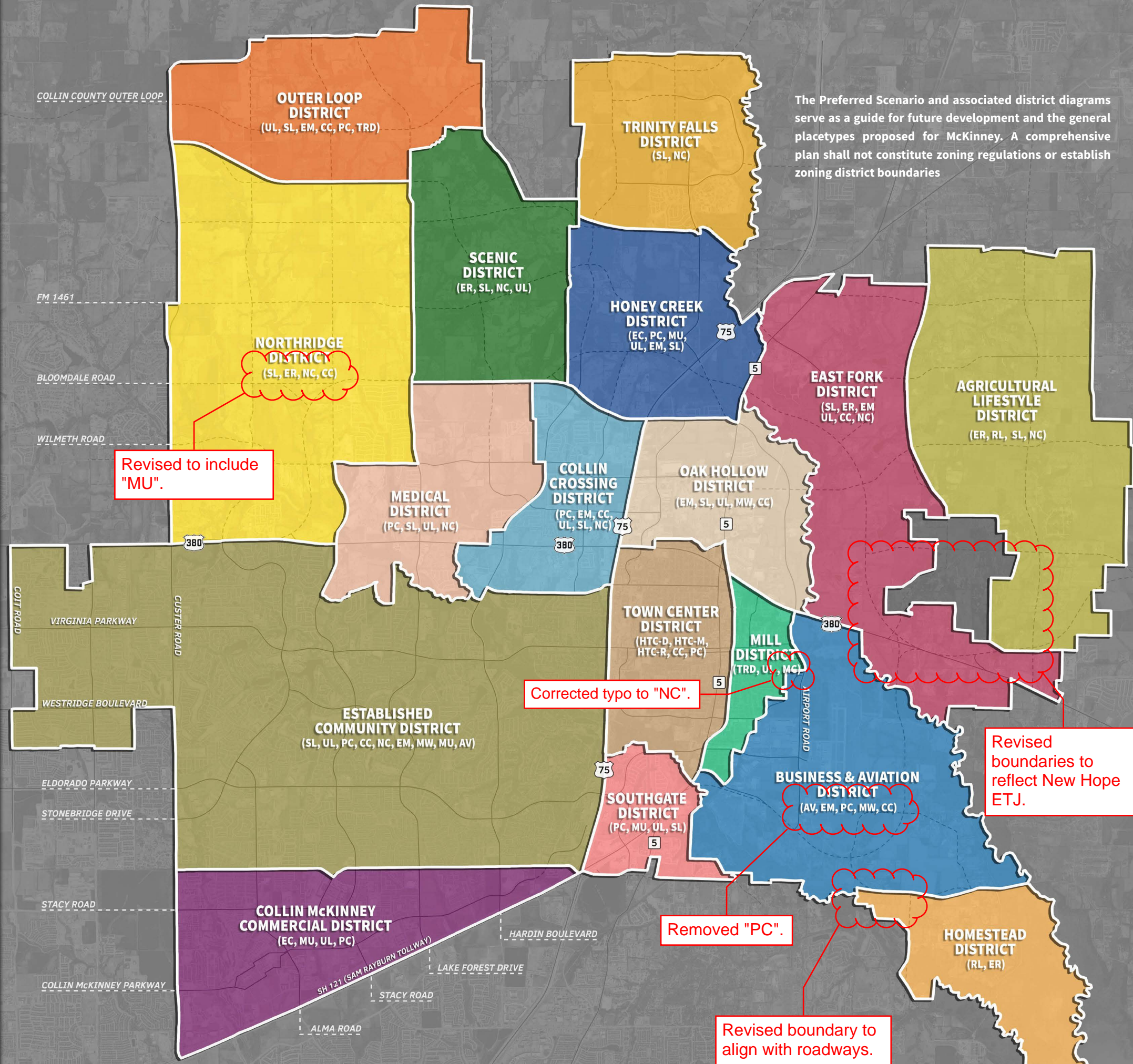


# PREFERRED SCENARIO

## PLACETYPES

- Aviation (AV)
- Commercial Center (CC)
- Employment Mix (EM)
- Entertainment Center (EC)
- Estate Residential (ER)
- Historic Town Center - Downtown (HTC-D)
- Historic Town Center - Mix (HTC-M)
- Historic Town Center - Residential (HTC-R)
- Manufacturing & Warehousing (MW)
- Mixed Use Center (MU)
- Neighborhood Commercial (NC)
- Professional Campus (PC)
- Rural Residential (RR)
- Suburban Living (SL)
- Transit-Ready Development (TRD)
- Urban Living (UL)



The Preferred Scenario and associated district diagrams serve as a guide for future development and the general placetypes proposed for McKinney. A comprehensive plan shall not constitute zoning regulations or establish zoning district boundaries

# LAND USE DIAGRAM

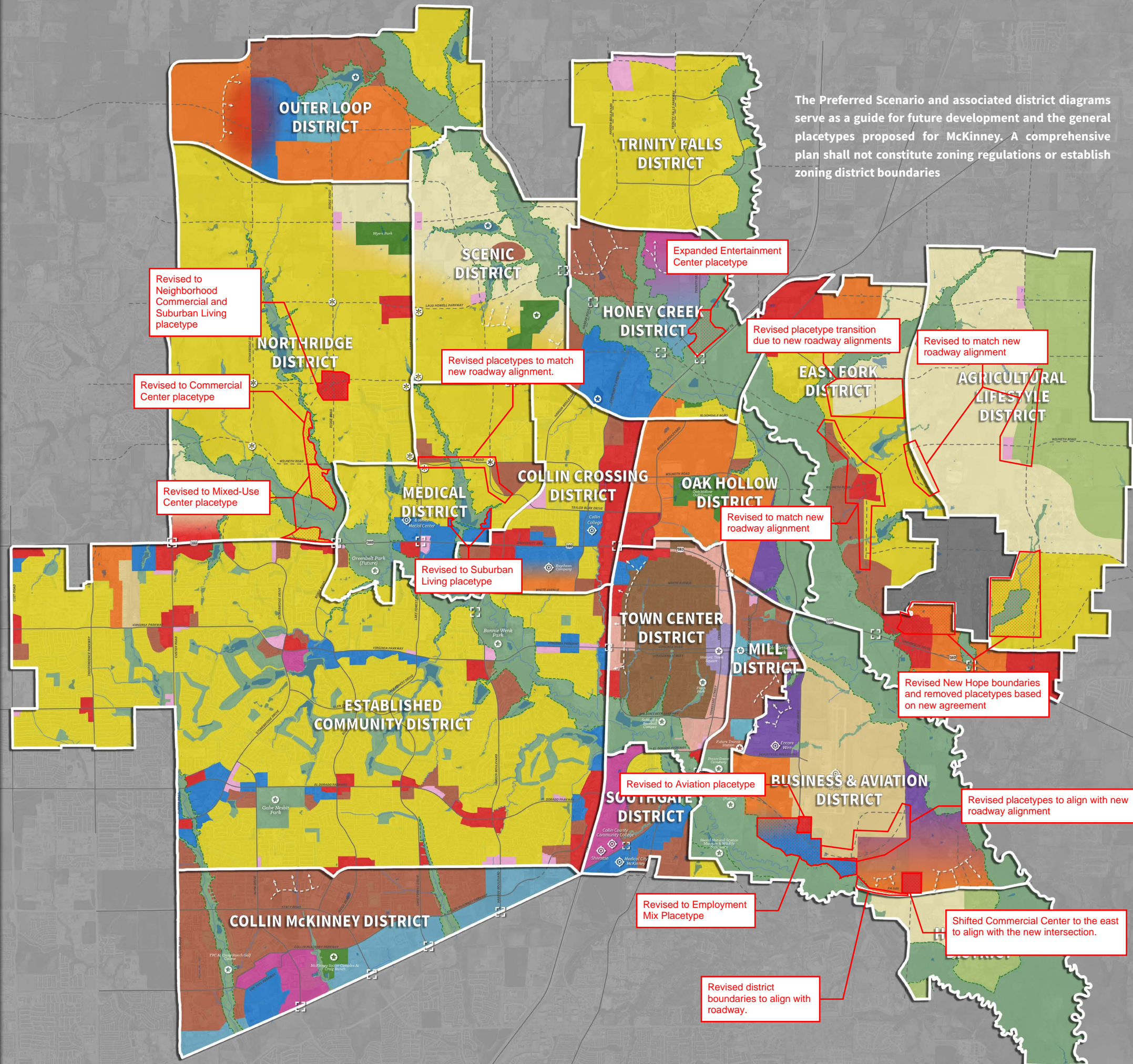
## LEGEND

### Placetypes

- Aviation
- Commercial Center
- Employment Mix
- Entertainment Center
- Estate Residential
- Historic Town Center - Downtown
- Historic Town Center - Mix
- Historic Town Center - Residential
- Manufacturing & Warehousing
- Mixed Use Center
- Neighborhood Commercial
- Professional Campus
- Rural Residential
- Suburban Living
- Transit-Ready Development
- Urban Living

### Other Features

- Floodplain / Amenity Zone
- District Boundary



The Preferred Scenario and associated district diagrams serve as a guide for future development and the general placetypes proposed for McKinney. A comprehensive plan shall not constitute zoning regulations or establish zoning district boundaries

Shifted Commercial Center to the east to align with the new intersection.

Revised district boundaries to align with roadway.

Revised to Employment Mix Placetype

Revised placetypes to align with new roadway alignment

Revised New Hope boundaries and removed placetypes based on new agreement

Revised to match new roadway alignment

Revised placetype transition due to new roadway alignments

Revised to match new roadway alignment

Expanded Entertainment Center placetype

Revised placetypes to match new roadway alignment.

Revised to Neighborhood Commercial and Suburban Living placetype

Revised to Commercial Center placetype

Revised to Mixed-Use Center placetype

Revised to Suburban Living placetype

Revised to Aviation placetype