



# McKinney National Airport

Visit McKinney Board – May 26th, 2026

Speaker: Kenneth Carley, A.A.E., Airport Director



# McKinney National Airport – Facts & Stats

- **Opened in 1979**, now a “National” General Aviation Airport:
  - 1 of Only 122 “National” Airports Nationwide out of 2,897 Nonprimary Airports
- Federal Contract Tower Airport (operates 10:00am – 6:00pm daily)
- **10<sup>th</sup> Busiest Airport in Texas** (operations)
- **99<sup>th</sup> Busiest Airport in the United States** (operations)
- Economic Impact to the Region: **\$299 Million**
- **US Customs Facility** for processing international GA arrivals
- Ranked **#1 in development estimate** for all GA airports in the US: **\$227 Million** (FAA)
- Well Positioned to **Expand for Both GA and Commercial Service**



# McKinney National Airport

## Facts & Stats, cont.

- **260 Based Aircraft**

- **Tenants**

- Corporate Flight Departments (manufacturing, finance, insurance, logistics, technology, etc.)
- Charter Operators
- Texas Department of Public Safety – Law enforcement, search and rescue
- Medical Air Transport – air ambulance, patient transport
- Numerous private enterprises with ongoing corporate hangar development
- Flight training – six flight schools
- McKinney ISD - McKinney Aviation Academy



2003



2025

# Current Airport Business Model

McKinney National Airport is a National General Aviation (GA) Reliever Airport

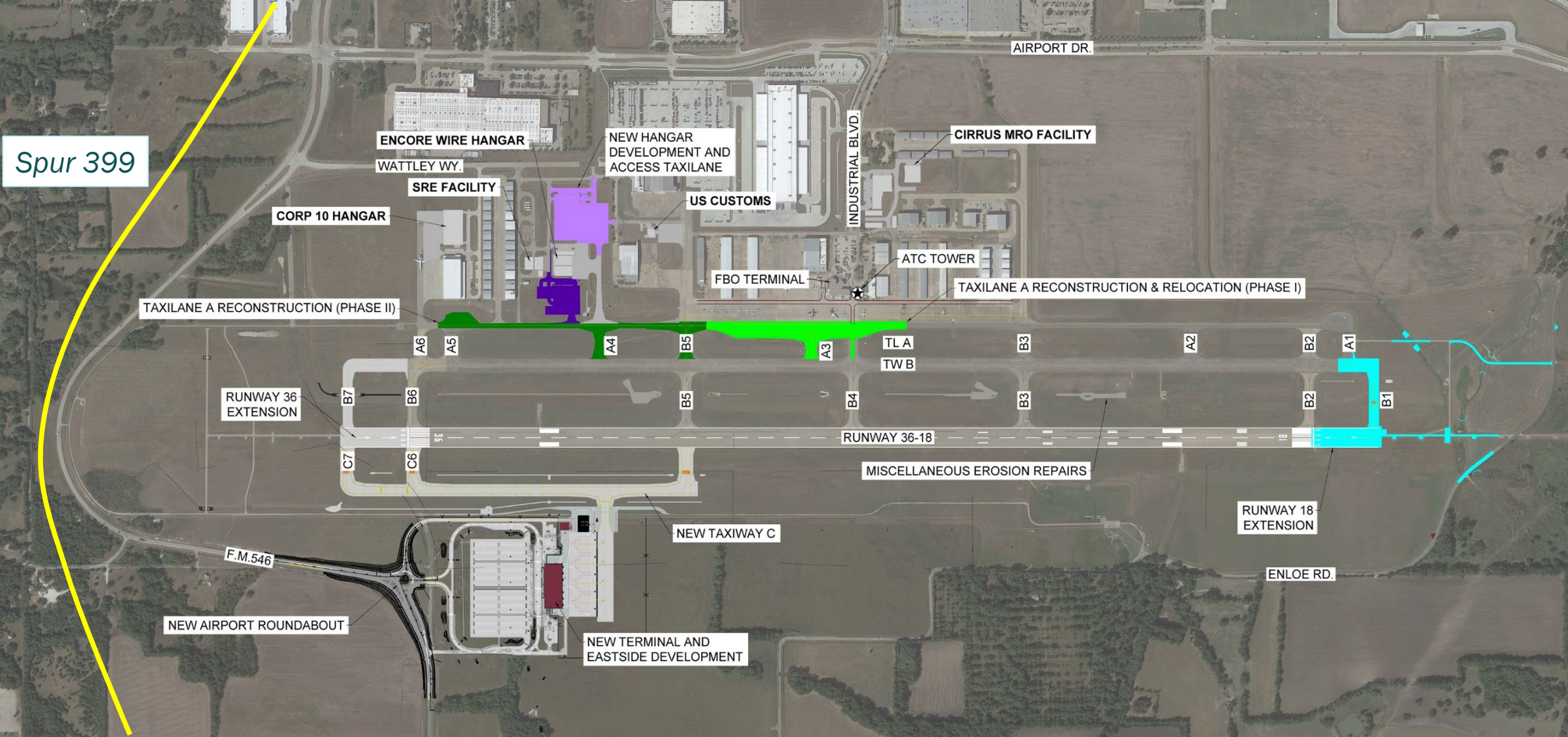
Maintenance and operation of the airfield and associated facilities is funded through revenue generated from:

- fuel sales
- hangar and office rents
- ground leases
- and other aeronautical services

Operations include all types and kinds of aeronautical activity **except** scheduled air carrier passenger and cargo service.



Spur 399



# Airport & Related Projects Update - 2026



Existing Runway 18-36 (8,002'x150')

Taxiway C7

Taxiway C6

Taxiway C

Taxiway C5



Airport Service Entrance

Employee Lot

Proposed Aircraft Fuel Farm

FM 546 Intersection Improvements

Proposed Deicing Location

FM 546

Terminal Parking Lot (980 Spaces)

Proposed Aircraft Gate Positions (4)

Airport Terminal Road Entrance

Terminal 1 (46,600 SF)

Protect Existing ATMOS Gas Line

Rental Car Lot

Shift Loop Roadway

Stormwater Detention Pond

Terminal Day 1 Operations











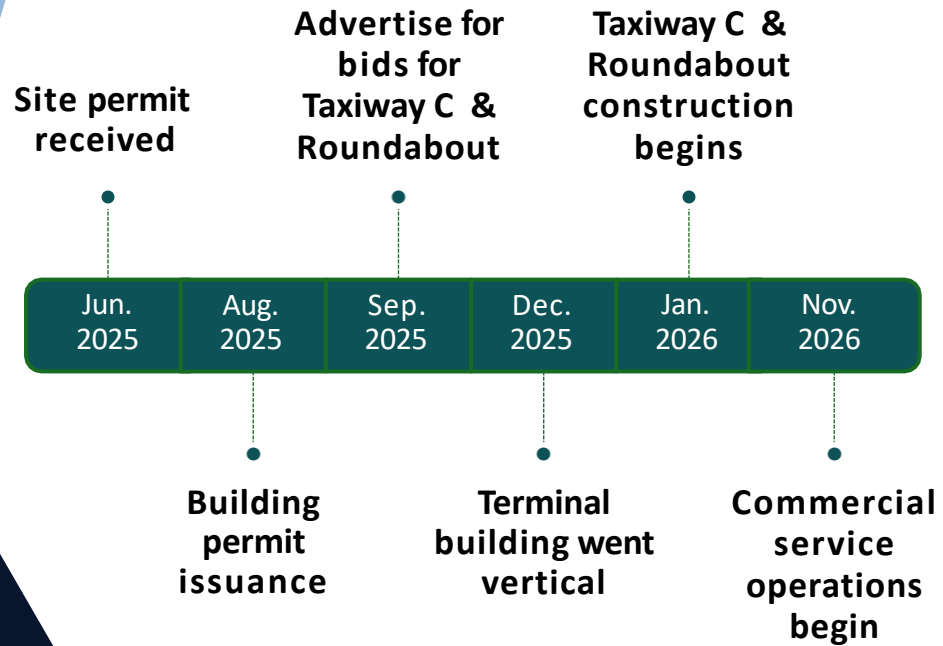






04/2026

# Program Timeline



		2025			2026			
Program Tasks		Apr - Jun	Jul - Sep	Oct - Dec	Jan - Mar	Apr - Jun	Jul - Sep	Oct - Dec
Terminal	CMAR Pricing and Contract Execution	■						
	Construction	■						
Taxiway C & Roundabout	Bidding			■				
	Contract Execution			■	■			
	Roundabout Construction				■	■	■	■
	Taxiway C Construction				■	■	■	■
	Terminal Opens							■

# Airlines and TKI – Part 139 Commercial Service

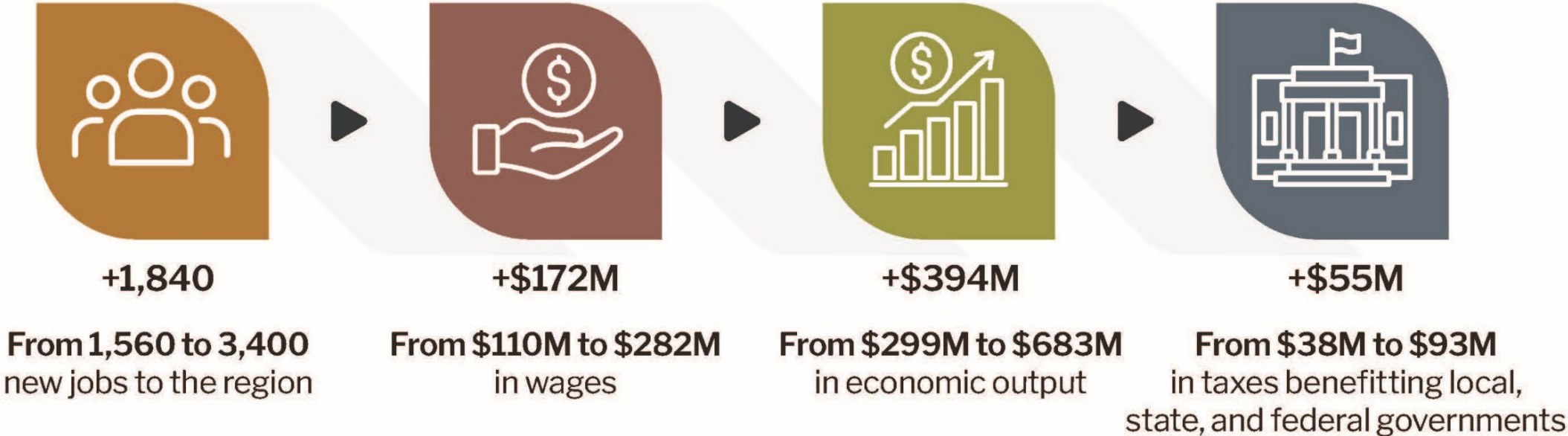
- Avelo Airlines, Inc. has signed the City's Airline Use and Lease Agreement.
  - Identified Avelo as the **Anchor Tenant Airline (ATA)**, providing certain preferential rights.
  - First Signatory Airline to execute the Agreement and commit to the development of terminal facilities.
  - Terms and conditions can be similarly used for future signatory airlines.



# Economic Impact

Commercial airline service at TKI will contribute directly to employment in Collin County, as well as more broadly to state and national gross domestic product (GDP). With the new line of business, TKI will become an even stronger economic catalyst, facilitating the growth of regional businesses and industries.

## Annual Economic Impact Today and Potential Impact (Year 3)



Monetary impacts are presented in 2023 dollars. | Source: InterVISTAS Consulting Inc. Economic Impact Study Analysis

# Questions?

FLYTKI.COM

