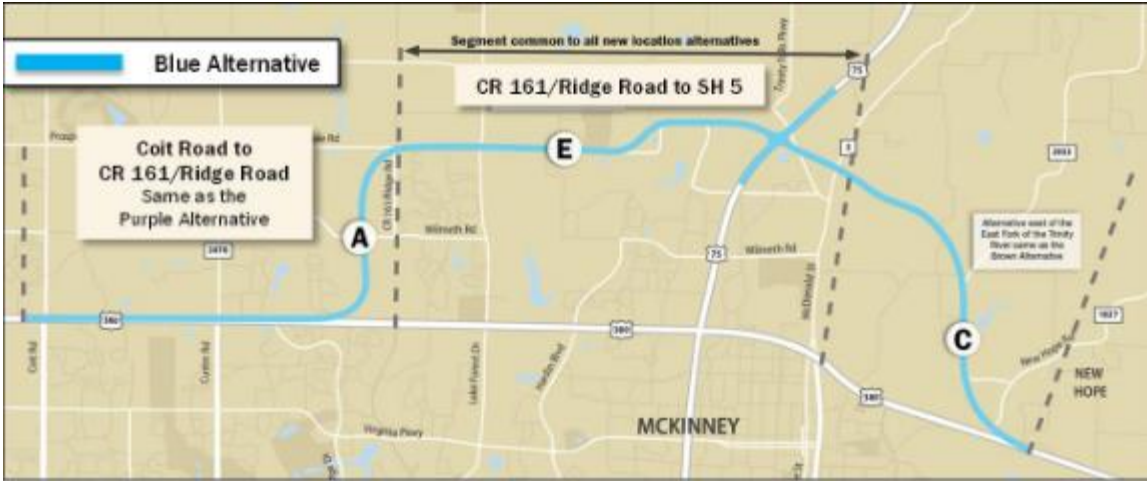


US 380 Bypass Park Impacts

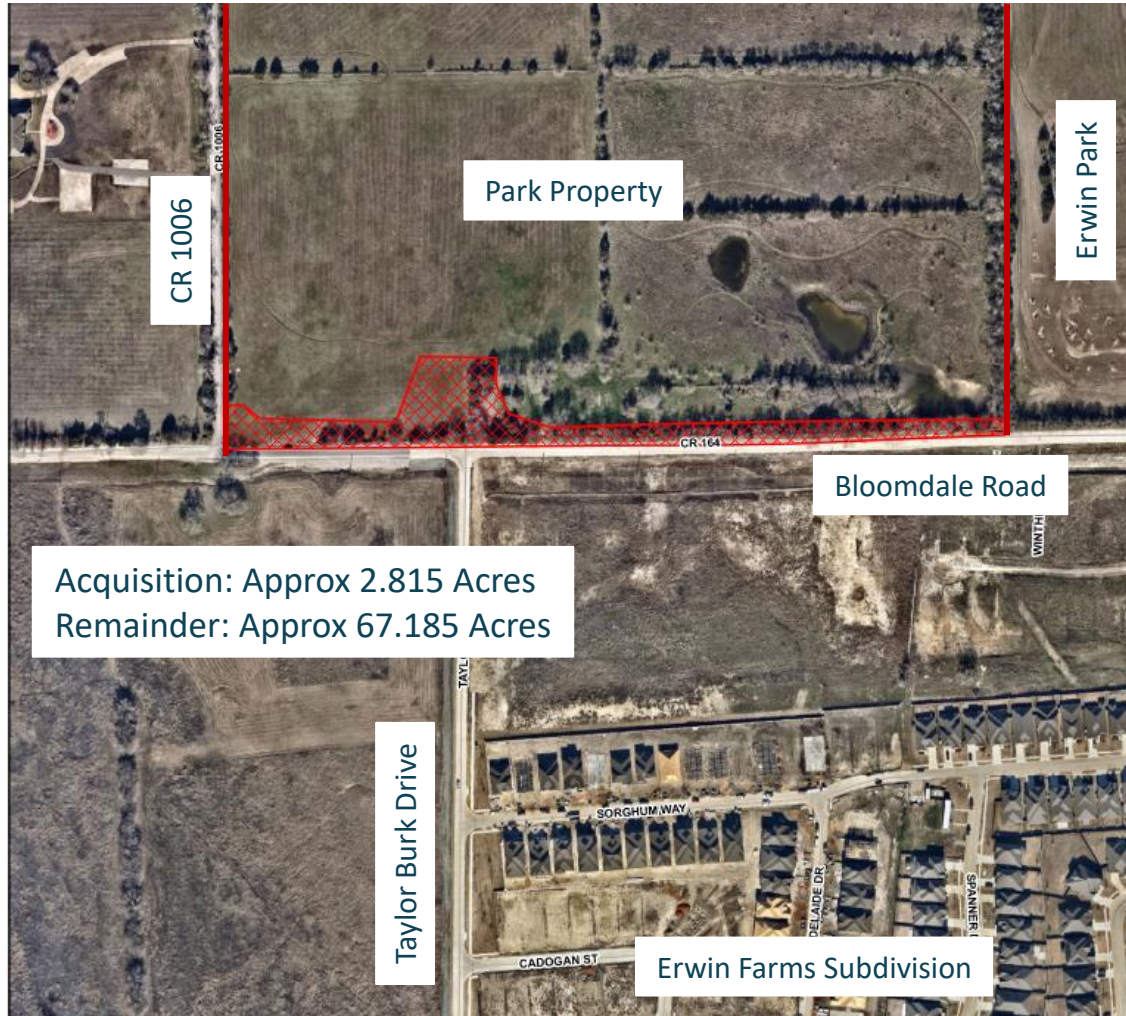
July 16, 2024



US 380 Bypass - Final Alignment



US 380 Bypass Alignment – Impact to Park Property



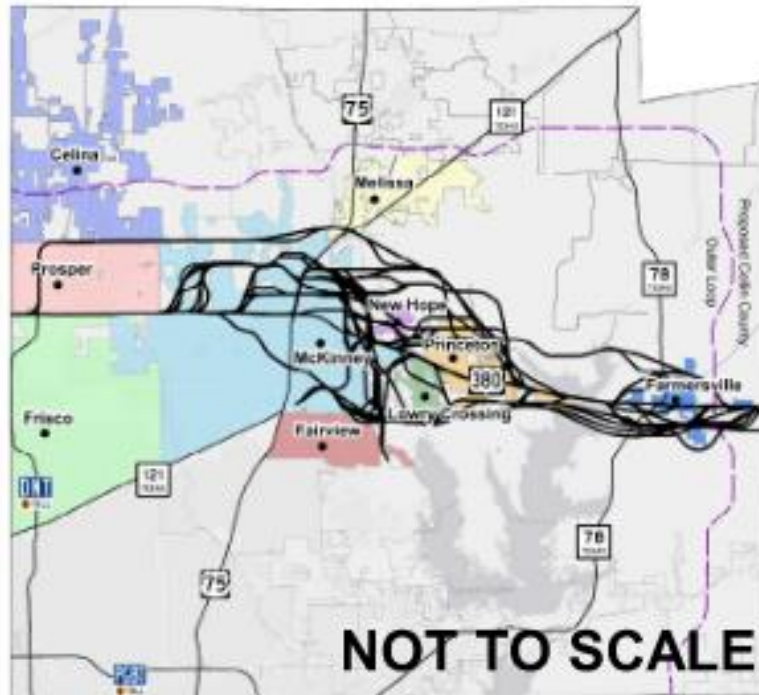
State Law Requirements

State law as defined in Chapter 26, *Protection of Public Parks and Recreational Lands*, of the Texas Parks and Wildlife Code requires that:

- *a municipality of this state may not approve any program or project that requires the use or taking of any public land designated and used prior to the arrangement of the program or project as a park unless the municipality, acting through its duly authorized governing body or officer, determines that:*
 - 1) *there is no feasible and prudent alternative to the use or taking of such land; and*
 - 2) *the program or project includes all reasonable planning to minimize harm to the land, as a park, resulting from the use or taking.*
- *A finding may be made only after notice and a hearing as required by this chapter.*

US 380 Bypass Alignment – Alternatives Evaluated

SUMMER 2017



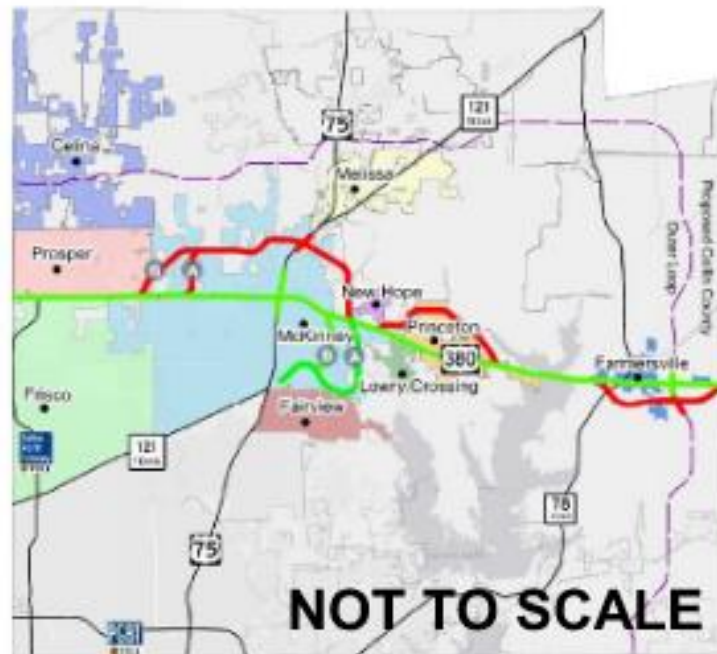
US 380 Bypass Alignment – Alternatives Evaluated

SPRING 2018

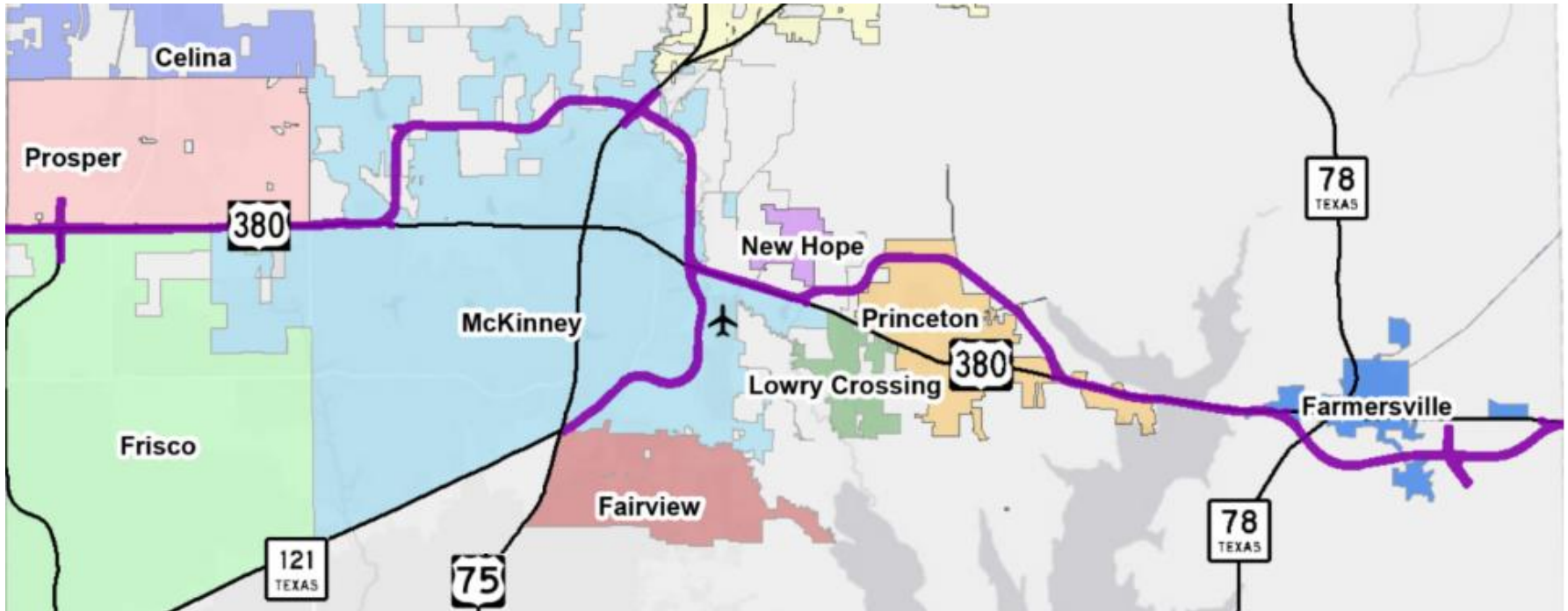


US 380 Bypass Alignment – Alternatives Evaluated

FALL 2018



US 380 Bypass – Final Alignment



Questions