



BCA-STUDIOS
ARCHITECTS
Gainesville - Atlanta
470-480-5560
1 WEST COURT SQUARE
SUITE 500
GAINESVILLE, FL 32602
410 BRADFORD STREET NW
ATLANTA, GA 30305

STAMP

[illegible]

VENU PRESENTS
SUNSET AMPHITHEATER
MCKINNEY
 MCKINNEY, TEXAS

PHASE

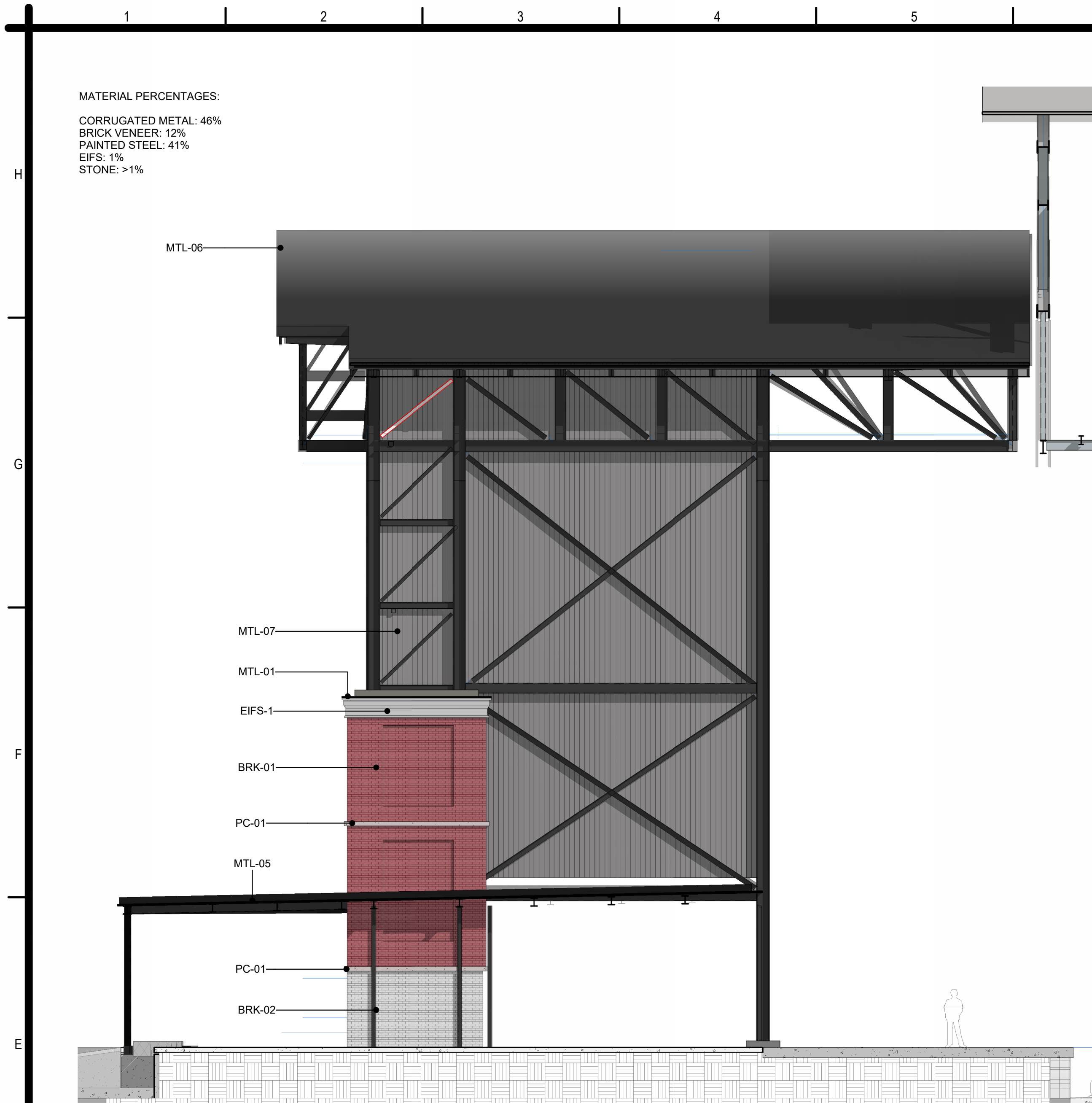
SCHEMATIC DESIGN

OVERALL EXTERIOR
ELEVATIONS

	JOB NO.
	20230040
	DATE
	09/19/2024

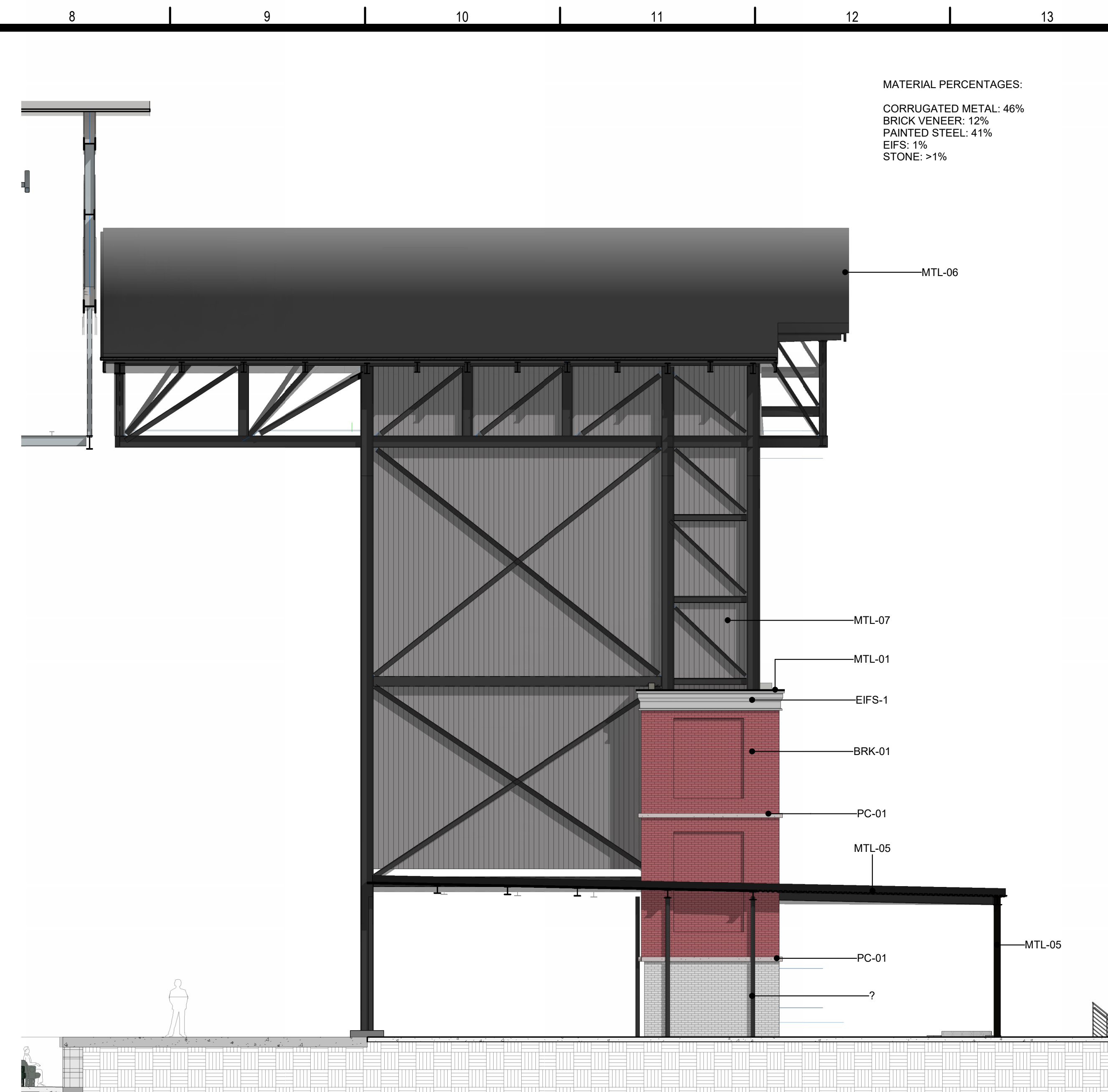
SHEET NO. **AP-200**





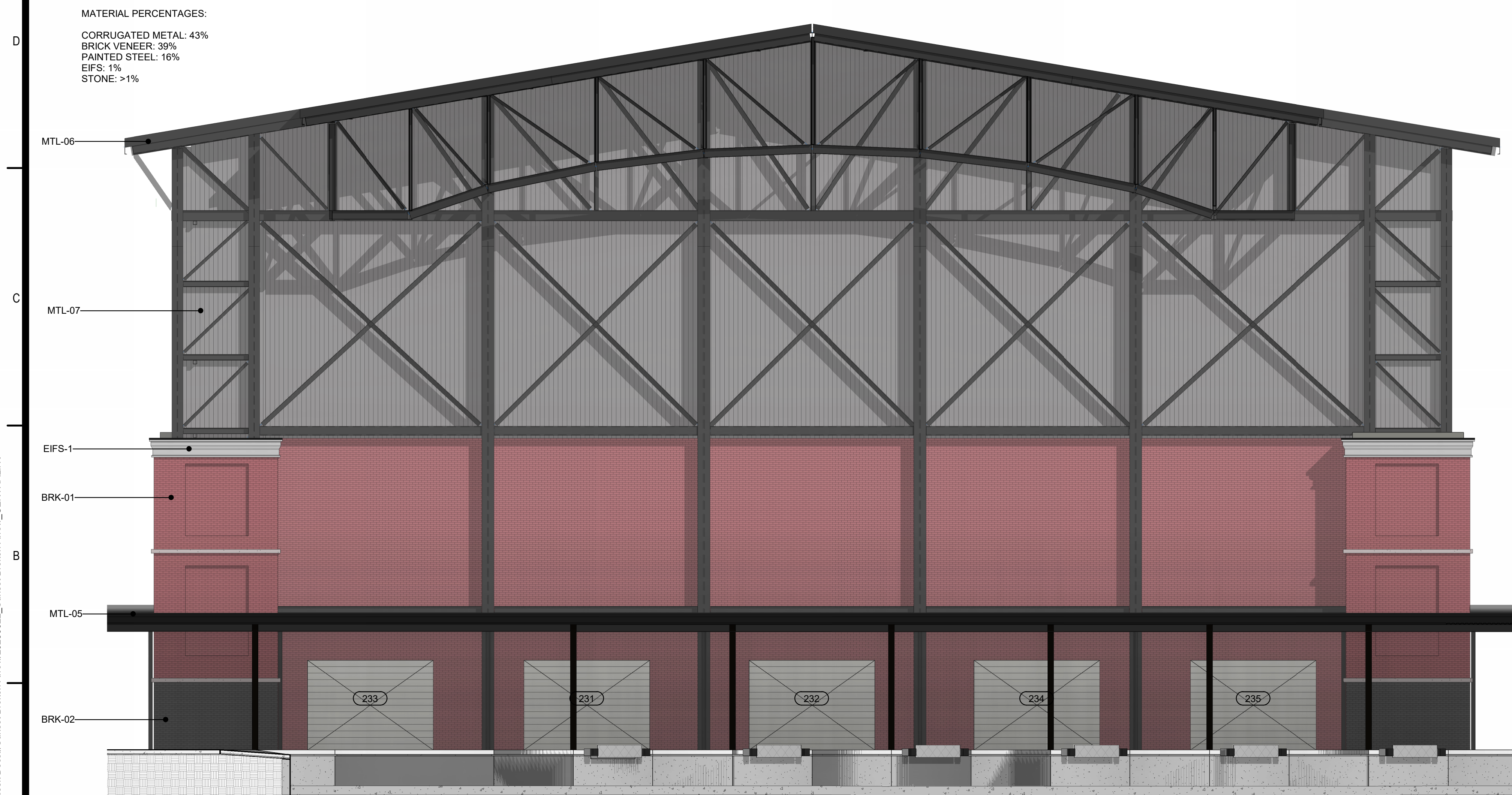
1 MCKINNEY - PERFORMANCE PLATFORM EXTERIOR ELEVATION A

AP-201	1/8" = 1'-0"
--------	--------------



3 MCKINNEY - PERFORMANCE PLATFORM EXTERIOR ELEVATION C

AP-201	1/8" = 1'-0"
--------	--------------



2 MCKINNEY - PERFORMANCE PLATFORM EXTERIOR ELEVATION B

AP-201	1/8" = 1'-0"
--------	--------------

ELEVATION MATERIALS LEGEND	
KEY	DESCRIPTION
BRK-01	BRICK MASONRY VENEER SIZE: MODULAR BASIS OF DESIGN MANUFACTURER: CHEROKEE STYLE: ARCHITECTURAL COLLECTION COLOR: VELOUR FLASH MORTAR AND COLOR: TBD NOTE: FINAL BRICK SELECTION DETERMINED BY OWNER - OTHER SIZES MAY NEED TO BE PROVIDED ON REQUEST SUCH AS: BELOW COMMODORE FULL RANGE VELOUR
BRK-02	BRICK MASONRY VENEER SIZE: MODULAR BASIS OF DESIGN MANUFACTURER: BELDIN COLOR: 40-140 VELOUR MORTAR AND COLOR: TBD NOTE: FINAL BRICK SELECTION DETERMINED BY OWNER - OTHER SIZES MAY NEED TO BE PROVIDED ON REQUEST
EFS-01	EXTERIOR INSULATION FINISH SYSTEM COLOR: D1 TBD FROM MANUFACTURES FULL LINE
MSRY-01	SPLIT FACE MASONRY COLOR - BRICK RED - (OR SIMILAR TO BE SELECTED FROM MANUFACTURERS FULL COLOR LINE)
MSRY-02	SPLIT FACE MASONRY COLOR - LIMESTONE - (OR SIMILAR TO BE SELECTED FROM MANUFACTURES FULL COLOR LINE)
MSRY-03	GROUND FACE MASONRY COLOR - LIMESTONE - (OR SIMILAR TO BE SELECTED FROM MANUFACTURES FULL COLOR LINE)
MSRY-04	FLUTED MASONRY COLOR - TBD.
MSRY-05	GROUND FACE MASONRY PAINTED, COLOR - TBD.
MTL-01	METAL COPING SYSTEM SHOP FABRICATED FINISH: KYNAR 500 COLOR: BY OWNER AND ARCHITECT SELECTED FROM MANUFACTURERS STANDARD COLOR CHART LOCATION: T.O. OF ALL PARAPETS (TYP) AND AS NOTED
MTL-02	GUTTER AND DOWNSPOUT SYSTEM FINISH: KYNAR 500 COLOR: BY OWNER AND ARCHITECT SELECTED FROM MANUFACTURERS STANDARD COLOR CHART ATTACH DOWNSPOUT TO BELOW GRADE STORM PIPE SYSTEM
MTL-03	SCUPPER/CORNDUCTOR HEAD & DOWNSPOUT SYSTEM FINISH: KYNAR 500 COLOR: BY OWNER AND ARCHITECT SELECTED FROM MANUFACTURERS STANDARD COLOR CHART ATTACH DOWNSPOUT TO BELOW GRADE STORM PIPE SYSTEM SEE ROOF PLAN FOR ALL LOCATIONS
MTL-04	ALUMINUM CANOPY SYSTEM - SUSPENDED DESIGN BASIS EQUAL TO: LAWRENCE METAL CANOPIES STYLE: LFS-FLCA PROFILE: 1/2" WITH FLANGE COLOR: MATTE BLACK LFS-M81 OR BY OWNER AND ARCHITECT SELECTED FROM MANUFACTURERS STANDARD COLOR CHART INTERNAL: GUTTER PIPED DOWN TO STORM SYSTEM.
MTL-05	ALUMINUM CANOPY SYSTEM - POST SUPPORTED DESIGN BASIS EQUAL TO: LAWRENCE METAL CANOPIES STYLE: LFS-POST SUPPORTED FLA PROFILE: 1/2" (NO FLANGE) COLOR: MATTE BLACK LFS-M81 OR BY OWNER AND ARCHITECT SELECTED FROM MANUFACTURERS STANDARD COLOR CHART INTERNAL: GUTTER PIPED DOWN TO STORM SYSTEM.
MTL-06	STANDING SEAM METAL ROOFING DESIGN BASIS EQUAL TO: MANUFACTURER: BERRIDGE MODEL: HIGH SEAM TEE-PANEL GAUGE: 22 COVERAGE: 18" 1/4" PANEL PROFILE: STRIATED FASTENERS CONCEALED SEAM PROFILE HEIGHT: 1-1/2" SNAP ON COLOR: TBD - SELECTED FROM MANUF. STANDARD FULL COLOR LINE UNDERLAYMENTS: METAL DECKING: SEE STRUCTURAL INSULATION: 3" THICK XPS (ISO FOR ACOUSTIC TRANSMISSION) SHEATHING: DENSDENCE PRIME ROOF BOARD ICE/WATER SHED: YES
MTL-07	CORRUGATED METAL PANEL DESIGN BASIS EQUAL TO: PAC-CLAD STYLE: HWF 13" BOX RIB COLOR: BY OWNER AND ARCHITECT SELECTED FROM MANUFACTURERS STANDARD COLOR CHART
STL-01	STRUCTURAL STEEL (EXPOSED) SEE STRUCT DWGS FOR SIZING AND DETAILS PAINT / COATING: RUST INHIBITOR COATING - EQUAL TO SHERWIN WILLIAM PRO-INDUSTRIAL- SEE SPECIFICATIONS COLOR: SW 7069 IRON ORE
STL-02	STEEL GUARDHANDRAIL(S) SEE _____ SERIES SHEETS FOR ALL LOCATIONS AND DETAILS PAINT / COATING: RUST INHIBITOR COATING - EQUAL TO SHERWIN WILLIAM PRO-INDUSTRIAL- SEE SPECIFICATIONS COLOR: SW 7069 IRON ORE
SF-01	STOREFRONT GLASS/GLAZING SYSTEM ALUMINUM & INSULATED GLASS STOREFRONT SYSTEM FRAME COLOR: ANODIZED BRONZE GLAZING TYPE: 1" INSULATED GLAZING COLOR/TINT: TINTED - COLOR TBD FROM MANUF. CHART NOTE: ALL EXT SF TO HAVE DRIP AND WEATHER SILLS
SF-02	STOREFRONT GLASS/GLAZING SYSTEM ALUMINUM & INSULATED GLASS STOREFRONT SYSTEM FRAME COLOR: ANODIZED BRONZE GLAZING TYPE: BALUSTIC RATED GLAZING COLOR/TINT: TINTED - COLOR TBD FROM MANUF. CHART NOTE: ALL EXT SF TO HAVE DRIP AND WEATHER SILLS
SF-03	STOREFRONT GLASS/GLAZING SYSTEM ALUMINUM & INSULATED GLASS STOREFRONT SYSTEM FRAME COLOR: XXXXXXXXXX GLAZING TYPE: 1" INSULATED GLAZING COLOR/TINT: TINTED - COLOR TBD FROM MANUF. CHART NOTE: ALL EXT SF TO HAVE DRIP AND WEATHER SILLS
PC-01	PRECAST CONCRETE ACCENT INFO TBD



ARCHITECTURE
PLANNING
PROGRAMMING
INTERIORS

AIA

NCARB

BCA-STUDIOS
ARCHITECTS
Gainesville - Atlanta

470-480-5560

STAMP

PRINTING & REVISIONS

[illegible]

VENU PRESENTS

VENUE PRESENTS
SUNSET AMPHITHEATER
MCKINNEY

MCKINNEY, TEXAS

PHASE

SCHEMATIC DESIGN

SHEET TITLE

ANCILLARY BLDGS
EXTERIOR
ELEVATIONS

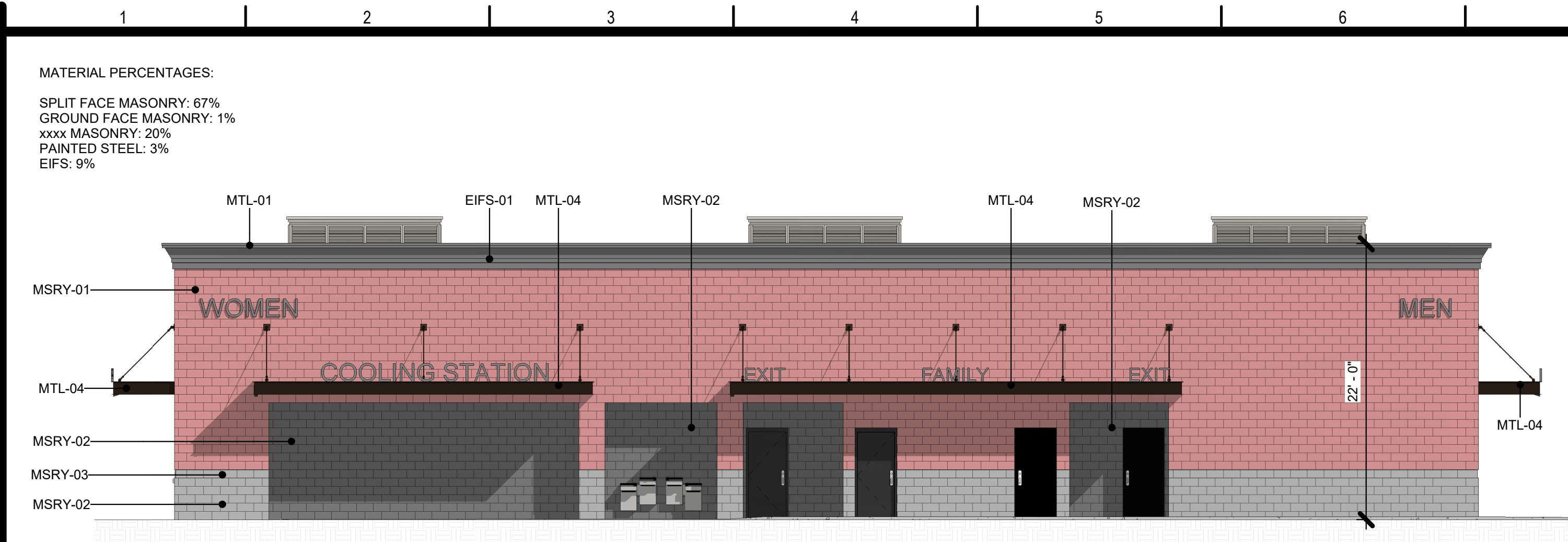
JOB NO.

	20230040
--	----------

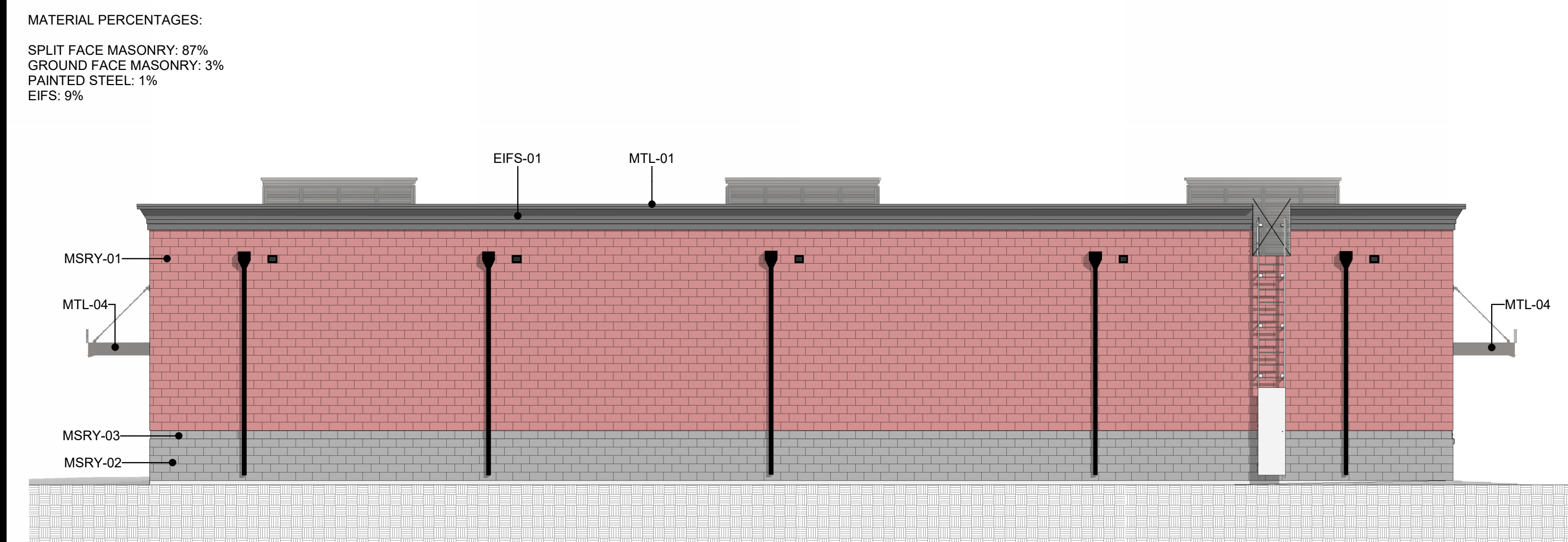
	DATE 00/10/2024
--	--------------------

SWEET **ME**

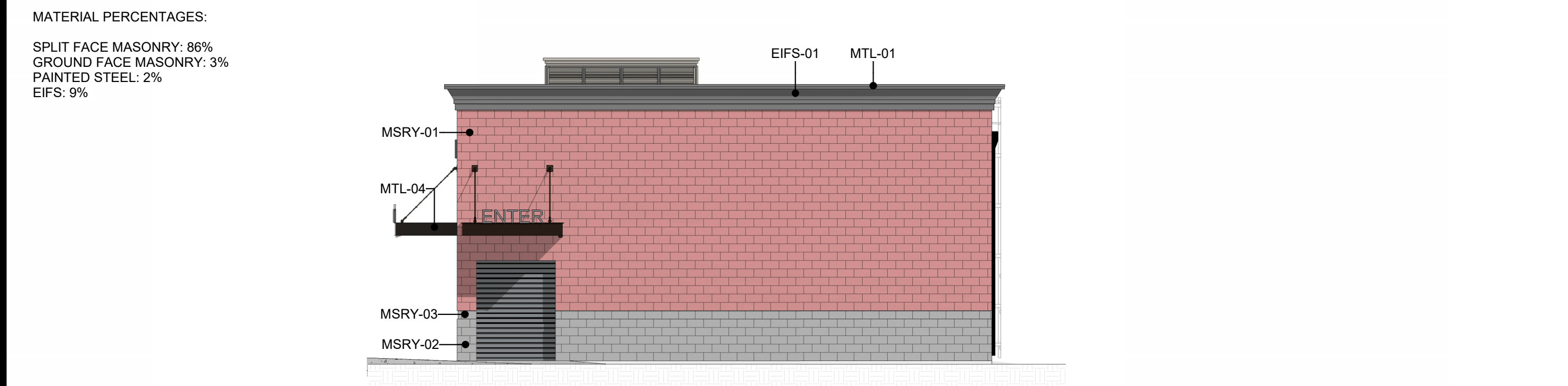
AP-201



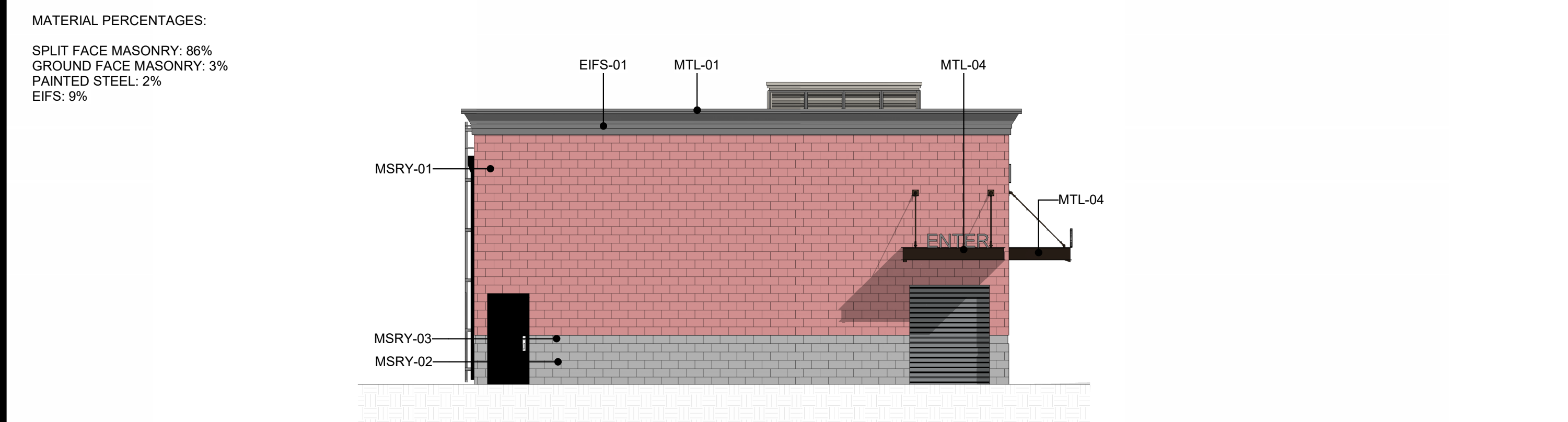
G1	MCKINNEY - RESTROOMS EXTERIOR ELEVATION 1
AP-203	1/8" = 1'-0"



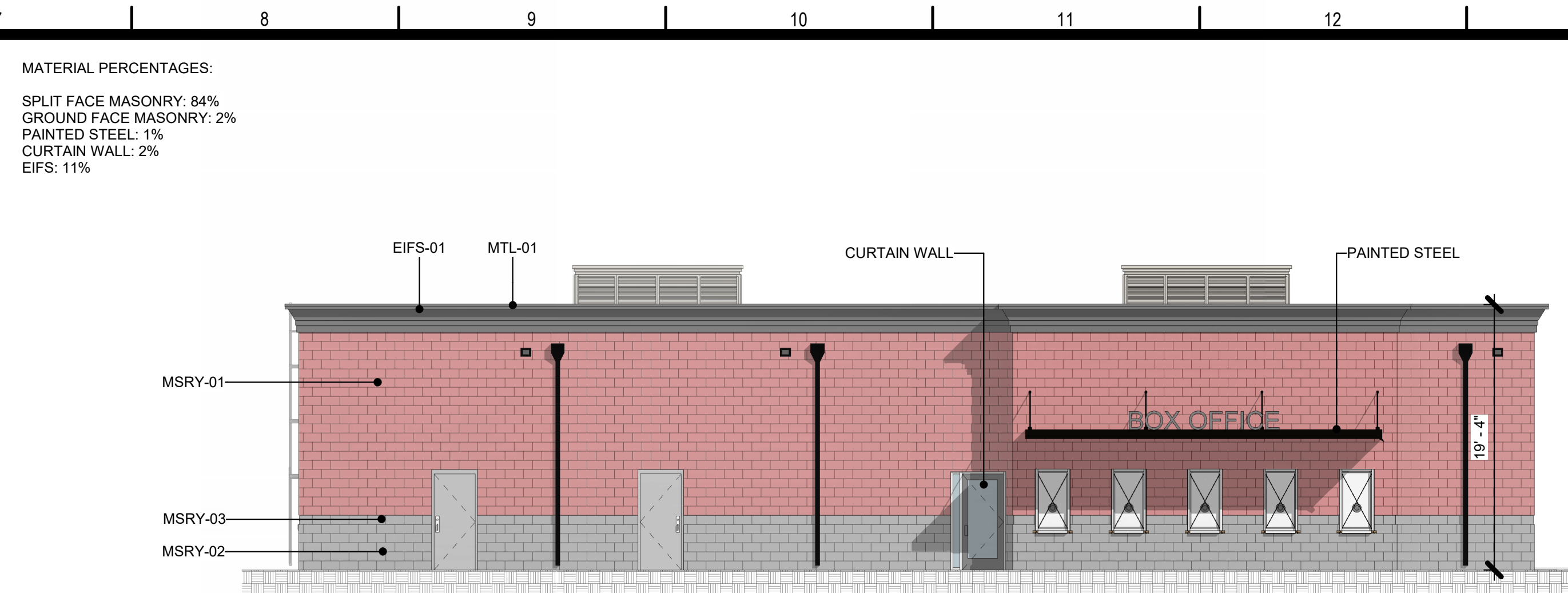
E1	MCKINNEY - RESTROOMS EXTERIOR ELEVATION 2
AP-203	1/8" = 1'-0"



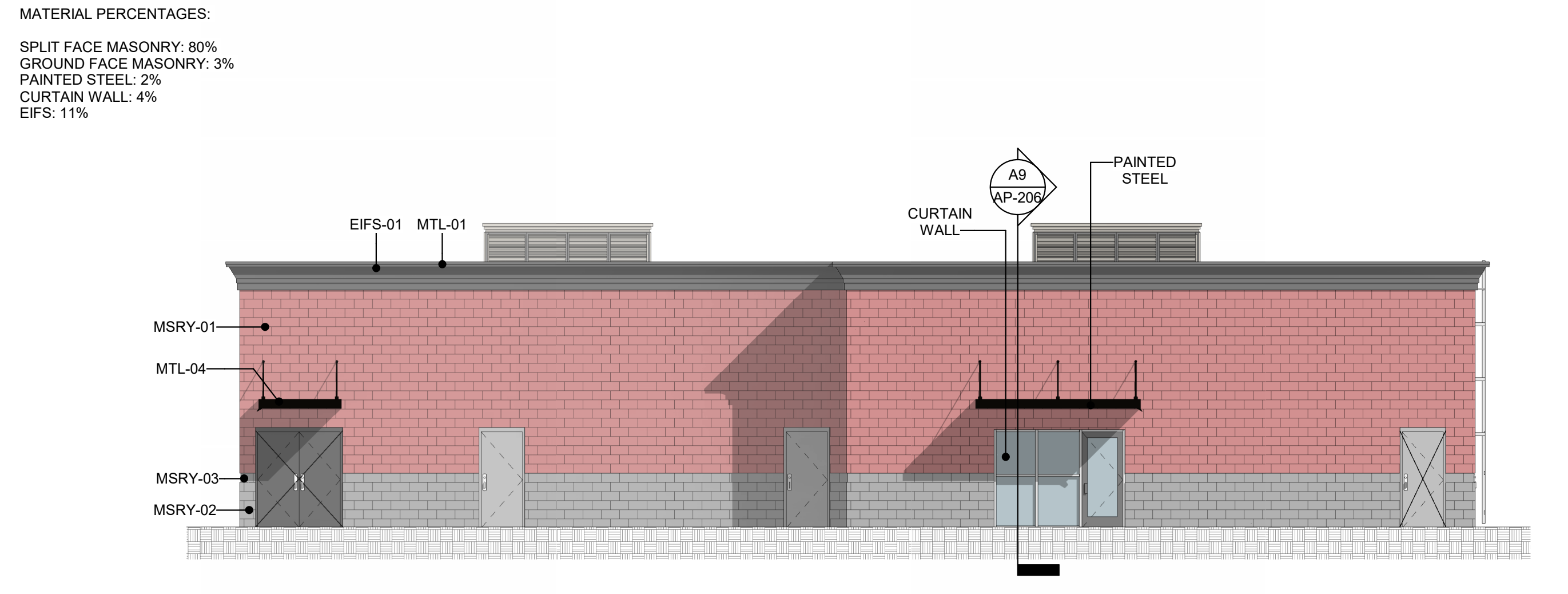
D1	MCKINNEY - RESTROOMS EXTERIOR ELEVATION 3
AP-203	1/8" = 1'-0"



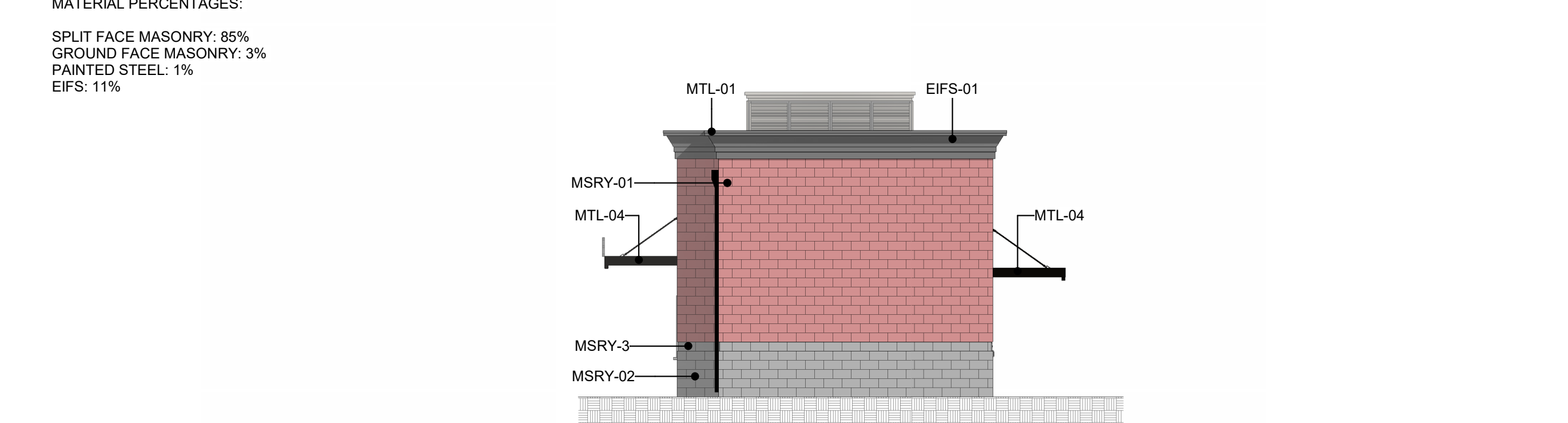
B1	MCKINNEY - RESTROOMS EXTERIOR ELEVATION 4
AP-203	1/8" = 1'-0"



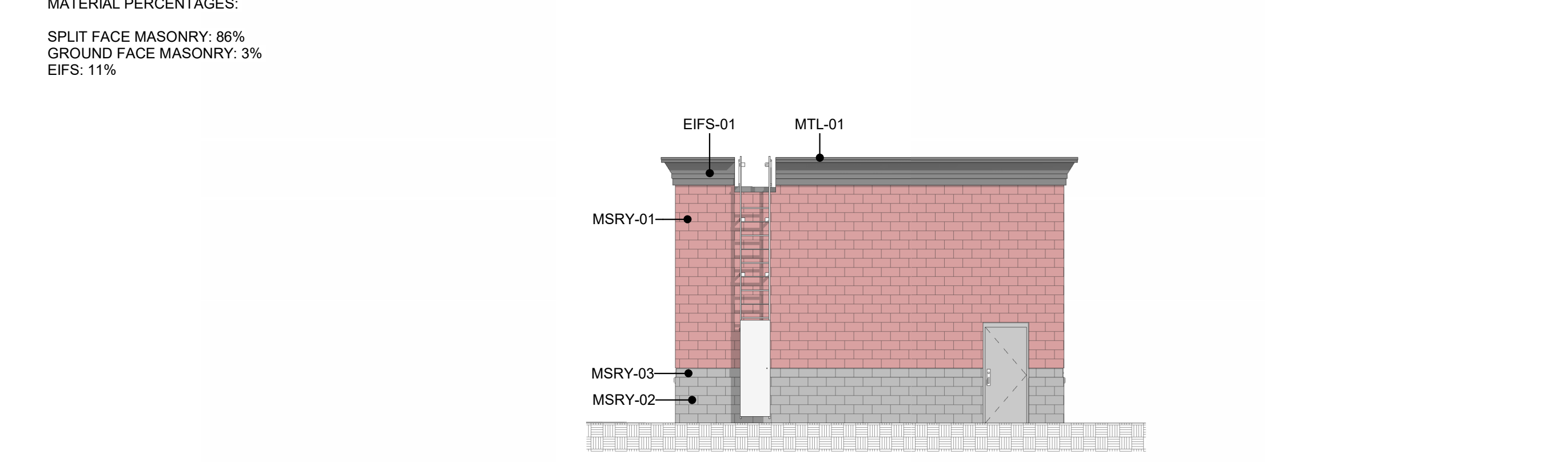
G7 MCKINNEY - BOX OFFICE EXTERIOR ELEVATION 1
AP-203 1/8" = 1'-0"



E7	MCKINNEY - BOX OFFICE EXTERIOR ELEVATION 2
AP-203	1/8" = 1'-0"

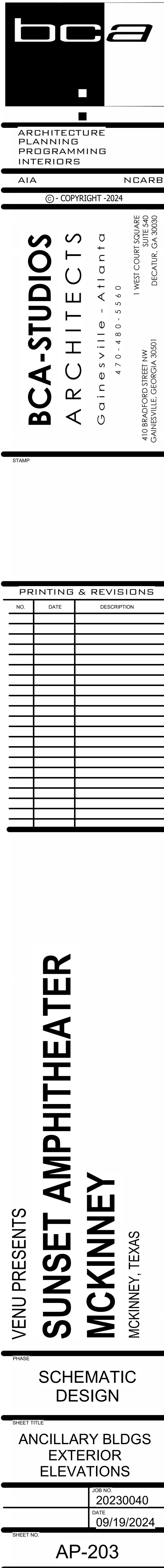


D7	MCKINNEY - BOX OFFICE EXTERIOR ELEVATION 3
AP-203	1/8" = 1'-0"



B7	MCKINNEY - BOX OFFICE EXTERIOR ELEVATION 4
AP-203	1/8" = 1'-0"

ELEVATION MATERIALS LEGEND	
KEY	DESCRIPTION
BRK-01	BRICK MASONRY VENEER SIZE: MODULAR BASIS OF DESIGN MANUFACTURER, CHEROKEE STYLE: ARCHITECTURAL COLLECTION COLOR: VELOUR FLASH MORTAR AND COLOR: TBD NOTE: FINAL BRICK SELECTION DETERMINED BY OWNER - OTHER SAMPLES MAY NEED TO BE PROVIDED ON REQUEST SUCH AS: BELDON COMMODORE FULL RANGE VELOUR
BRK-02	BRICK MASONRY VENEER SIZE: MODULAR BASIS OF DESIGN MANUFACTURER, BELDON COLOR: 4014B3 VELOUR MORTAR AND COLOR: TBD NOTE: FINAL BRICK SELECTION DETERMINED BY OWNER - OTHER SAMPLES MAY NEED TO BE PROVIDED ON REQUEST
EIFS-01	EXTERIOR INSULATION FINISH SYSTEM COLOR 01 TBD FROM MANUFACTURES FULL LINE
MSRY-01	SPLIT FACE MASONRY COLOR - BRICK RED - (OR SIMILAR TO BE SELECTED FROM MANUFACTURERS FULL COLOR LINE)
MSRY-02	SPLIT FACE MASONRY COLOR - LIMESTONE - (OR SIMILAR TO BE SELECTED FROM MANUFACTURERS FULL COLOR LINE)
MSRY-03	GROUND FACE MASONRY COLOR - LIMESTONE - (OR SIMILAR TO BE SELECTED FROM MANUFACTURERS FULL COLOR LINE)
MSRY-04	FLUTED MASONRY COLOR - TBD.
MSRY-05	GROUND FACE MASONRY PAINTED, COLOR - TBD.
MTL-01	METAL COPING SYSTEM SHOP FABRICATED FINISH: KYNAR 500 COLOR BY OWNER AND ARCHITECT SELECTED FROM MANUFACTURERS STANDARD COLOR CHART LOCATION: T.O. OF ALL PARAPETS (TYP) AND AS NOTED
MTL-02	GUTTER AND DOWNSPOUT SYSTEM FINISH: KYNAR 500 COLOR BY OWNER AND ARCHITECT SELECTED FROM MANUFACTURERS STANDARD COLOR CHART ATTACH DOWNSPOUT TO BELOW GRADE STORM PIPE SYSTEM
MTL-03	SCUPPER/CONDUCTOR HEAD & DOWNSPOUT SYSTEM FINISH: KYNAR 500 COLOR BY OWNER AND ARCHITECT SELECTED FROM MANUFACTURERS STANDARD COLOR CHART ATTACH DOWNSPOUT TO BELOW GRADE STORM PIPE SYSTEM SEE ROOF PLAN FOR ALL LOCATIONS
MTL-04	ALUMINUM CANOPY SYSTEM - SUSPENDED DESIGN BASIS EQUAL TO: LAWRENCE METAL CANOPIES STYLE: LFS-FLCA PROFILE: 12" WITH FLANGE COLOR: MATTE BLACK LFS-MB1 OR BY OWNER AND ARCHITECT SELECTED FROM MANUFACTURERS STANDARD COLOR CHART INTERNAL GUTTER PIPED DOWN TO STORM SYSTEM.
MTL-05	ALUMINUM CANOPY SYSTEM - POST SUPPORTED DESIGN BASIS EQUAL TO: LAWRENCE METAL CANOPIES STYLE: LFS-POST SUPPORTED FLA PROFILE: 12" (NO FLANGE) COLOR: MATTE BLACK LFS-MB1 OR BY OWNER AND ARCHITECT SELECTED FROM MANUFACTURERS STANDARD COLOR CHART INTERNAL GUTTER PIPED DOWN TO STORM SYSTEM.
MTL-06	STANDING SEAM METAL ROOFING DESIGN BASIS EQUAL TO: MANUFACTURER: BERRIDGE MODEL: HIGH SEAM TEE-PANEL GAUGE: 22 COVERAGE: 18-1/4" PANEL PROFILE: STRUTED FASTENERS: CONCEALED SEAM PROFILE HEIGHT: 1-1/2" SNAP ON COLOR: TBD - SELECTED FROM MANUF. STANDARD FULL COLOR LINE UNDERLAYMENTS METAL DECKING: SEE STRUCTURAL INSULATION: 3" THICK POLYISO (FOR ACOUSTIC TRANSMISSION) SHEATHING: DENSDECK PRIME ROOF BOARD ICE/WATER SHED: YES
MTL-07	CORRUGATED METAL PANEL DESIGN BASIS EQUAL TO: PAC-CLAD STYLE: HWP 1-3/8" BOX RIB COLOR BY OWNER AND ARCHITECT SELECTED FROM MANUFACTURERS STANDARD COLOR CHART
STL-01	STRUCTURAL STEEL (EXPOSED) SEE STRUCT DINGS FOR SIZING AND DETAILS PAINT / COATING: RUST INHIBITOR COATING - EQUAL TO SHERWIN WILLIAM PRO-INDUSTRIAL. SEE SPECIFICATIONS COLOR: SW 7008 IRON ORE
STL-02	STEEL GUARDRAIL(S) SEE _____ SERIES SHEETS FOR ALL LOCATIONS AND DETAILS PAINT / COATING: RUST INHIBITOR COATING - EQUAL TO SHERWIN WILLIAM PRO-INDUSTRIAL. SEE SPECIFICATIONS COLOR: SW 7008 IRON ORE
SF-01	STOREFRONT GLASS/GLAZING SYSTEM ALUMINUM & INSULATED GLASS STOREFRONT SYSTEM FRAME COLOR: ANODIZED BRONZE GLAZING TYPE: 1" INSULATED GLAZING COLOR/TINT: TINTED - COLOR TBD FROM MANUF CHART NOTE: ALL EXT SF TO HAVE DRIP AND WEATHER SILLS
SF-02	STOREFRONT GLASS/GLAZING SYSTEM ALUMINUM & INSULATED GLASS STOREFRONT SYSTEM FRAME COLOR: ANODIZED BRONZE GLAZING TYPE: BALLISTIC RATED GLAZING COLOR/TINT: TINTED - COLOR TBD FROM MANUF CHART NOTE: ALL EXT SF TO HAVE DRIP AND WEATHER SILLS
SF-03	STOREFRONT GLASS/GLAZING SYSTEM ALUMINUM & INSULATED GLASS STOREFRONT SYSTEM FRAME COLOR: XXXXXXXXXX GLAZING TYPE: 1" INSULATED GLAZING COLOR/TINT: TINTED - COLOR TBD FROM MANUF CHART NOTE: ALL EXT SF TO HAVE DRIP AND WEATHER SILLS
PC-01	PRECAST CONCRETE ACCENT INFO TBD



[illegible]

VENU PRESENTS
SUNSET AMPHITHEATER
MCKINNEY
MCKINNEY, TEXAS

PHASE

SCHEMATIC DESIGN

WALL SECTIONS

	JOB NO.
	20230040
	DATE
	09/19/2024

AP-206

