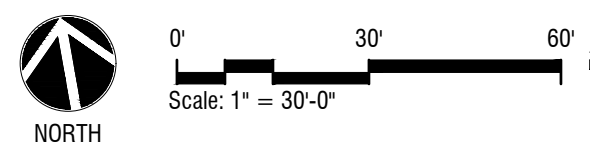
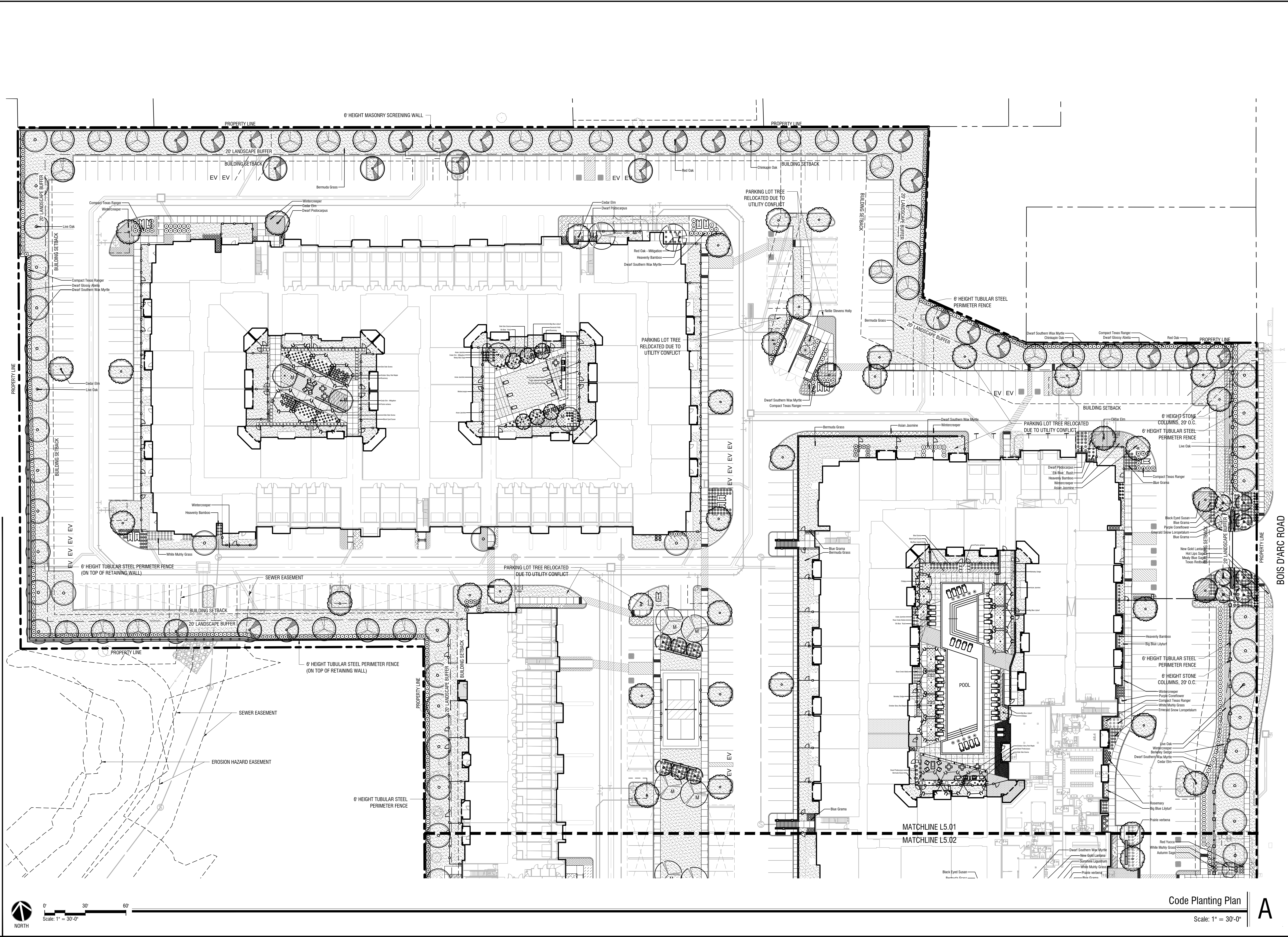


Plotted By: D.K. Harrison, Date: April 17, 2023, 05:23:29pm, File Path: K:\WK\Projects\064446519 - JPL Bois D'Arc\CAD\_Sheets\Civil\5.01\_CODE PLANTING PLAN.dwg  
 This document, together with the concepts and designs presented herein, is intended only for the specific purpose and client for which it was prepared. Reuse of and improper reliance on this document without written authorization and adaptation by Kimley-Horn and Associates, Inc. shall be without liability to Kimley-Horn and Associates, Inc.

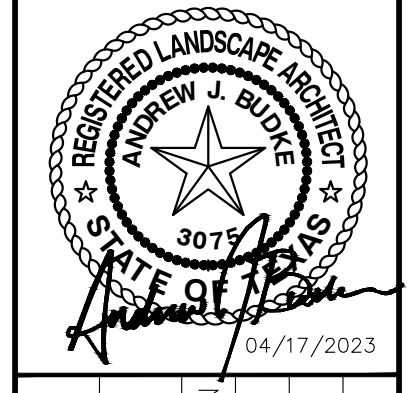


Code Planting Plan  
 Scale: 1" = 30'-0"

A

NO.	REVISIONS	DATE	BY

**Kimley»Horn**  
 © 2022 KIMLEY-HORN AND ASSOCIATES, INC.  
 13455 NOEL ROAD, SUITE 700, DALLAS, TX 75240  
 PHONE: 972-770-1300 FAX: 972-239-3820  
 WWW.KIMLEY-HORN.COM  
 TEXAS REGISTERED ENGINEERING FIRM F-928



KHA PROJECT	064446519
DATE	APRIL, 2023
SCALE	AS SHOWN
DESIGNED BY	AJB
DRAWN BY	HPD
CHECKED BY	AJB

**CODE PLANTING PLAN**

**BOIS D'ARC**  
 CITY OF MCKINNEY  
 COLLIN COUNTY, TEXAS

SHEET NUMBER  
**L5.01**



# PLANTING NOTES:

- LANDSCAPE CONTRACTOR SHALL BE RESPONSIBLE FOR VERIFYING THE LOCATION OF ALL UNDERGROUND UTILITIES, PIPES, STRUCTURES, AND LINE RUNS IN THE FIELD PRIOR TO THE INSTALLATION OF ANY PLANT MATERIAL.
- IT IS THE RESPONSIBILITY OF THE CONTRACTOR TO ADVISE THE LANDSCAPE ARCHITECT OF ANY CONDITION FOUND ON THE SITE WHICH PROHIBITS INSTALLATION AS SHOWN ON THESE DRAWINGS.
- ALL PLANT MATERIAL SHALL BE MAINTAINED IN A HEALTHY AND GROWING CONDITION AND MUST BE REPLACED WITH PLANT MATERIAL OF SAME VARIETY AND SIZE IF DAMAGED, DESTROYED, OR REMOVED.
- LANDSCAPE CONTRACTOR SHALL BE RESPONSIBLE FOR FINE GRADING AND REMOVAL OF DEBRIS PRIOR TO PLANTING IN ALL AREAS.
- FINAL FINISH GRADING SHALL BE REVIEWED BY THE LANDSCAPE ARCHITECT. LANDSCAPE CONTRACTOR SHALL BE RESPONSIBLE FOR ANY ADDITIONAL TOPSOIL REQUIRED TO CREATE A SMOOTH CONDITION PRIOR TO PLANTING.
- ALL PLANT QUANTITIES LISTED ARE FOR INFORMATION ONLY. IT IS THE CONTRACTOR'S RESPONSIBILITY TO PROVIDE FULL COVERAGE IN ALL PLANTING AREAS AS SPECIFIED IN THE PLANT SCHEDULE AND VERIFY ALL QUANTITIES.
- LANDSCAPE CONTRACTOR TO PROVIDE STEEL EDGING (REFER TO MATERIALS PAGE) BETWEEN ALL PLANTING BEDS AND LAWN AREAS.
- ALL PLANT MATERIAL SHALL CONFORM TO THE SPECIFICATIONS AND SIZES GIVEN IN THE PLANT LIST AND SHALL BE NURSERY GROWN IN ACCORDANCE WITH THE AMERICAN STANDARD FOR NURSERY STOCK. LATEST EDITION AMERICAN ASSOCIATION OF NURSERYMEN STANDARDS. ANY PLANT SUBSTITUTION SHALL BE APPROVED BY LANDSCAPE ARCHITECT PRIOR TO PURCHASE.
- LANDSCAPE CONTRACTOR IS RESPONSIBLE FOR ANY COORDINATION WITH OTHER CONTRACTORS ON SITE AS REQUIRED TO ACCOMPLISH ALL PLANTING OPERATIONS.
- ALL NEW PLANTING AREAS TO BE AMENDED PER SPECIFICATIONS.
- ANY PLANT MATERIAL THAT DOES NOT SURVIVE SHALL BE REPLACED WITH AN EQUIVALENT SIZE AND SPECIES WITHIN THIRTY (30) DAYS.
- PLANT MATERIAL SHALL BE PRUNED AS NECESSARY TO CONTROL SIZE BUT NOT TO DISRUPT THE NATURAL GROWTH PATTERN OR CHARACTERISTIC FORM OF THE PLANT EXCEPT AS NECESSARY TO ACHIEVE HEIGHT CLEARANCE FOR VISIBILITY AND PEDESTRIAN PASSAGE OR TO ACHIEVE A CONTINUOUS OPAQUE HEDGE IF REQUIRED.
- LANDSCAPED AREAS SHALL BE KEPT FREE OF TRASH, WEEDS, DEBRIS, AND DEAD PLANT MATERIAL.
- ALL LIME STABILIZED SOIL & INORGANIC SELECT FILL FOR BUILDING SHOULD BE REMOVED FROM PLANTING AREAS TO A DEPTH OF 24" & REPLACED WITH ORGANIC IMPORTED TOPSOIL FILL.
- CONTRACTOR TO PROVIDE 12 MONTH WARRANTY AND MAINTENANCE FOR ALL PLANT MATERIAL FROM DATE OF SUBSTANTIAL COMPLETION.
- ALL TREES OVERHANGING PEDESTRIAN PATHWAYS TO BE PRUNED TO BE 7' CLEAR. ALL TREES OVERHANGING FIRE LINE / VEHICULAR STREET TO BE PRUNED TO BE 14' CLEAR.
- ALL AREAS OUTSIDE LOW DISTURBED BY CONSTRUCTION ACTIVITY TO BE FINE GRADED AND PLANTED WITH BERMUDA HYDROMULCH WITH TEMPORARY IRRIGATION UNTIL ESTABLISHED.

# IRRIGATION NOTES:

- ALL REQUIRED LANDSCAPE AREAS SHALL BE PROVIDED WITH AN AUTOMATIC UNDERGROUND IRRIGATION SYSTEM WITH RAIN AND FREEZE SENSORS, AND SAID IRRIGATION SYSTEM SHALL BE DESIGNED BY A QUALIFIED PROFESSIONAL AND INSTALLED BY A LICENSED IRRIGATOR.
- OVER SPRAY ON STREETS AND WALKS IS PROHIBITED.
- IRRIGATION SYSTEMS SHALL BE MAINTAINED AND REPLACED AS NECESSARY.
- ALL PLANTING AREAS TO BE FULLY IRRIGATED.
- IRRIGATION SYSTEM TO HAVE A FULLY AUTOMATED CONTROL SYSTEM.
- ANY EXISTING PLANTING DAMAGED DURING CONSTRUCTION IS TO BE REPLACED AT NO COST OF THE OWNER.
- IF THE EXISTING IRRIGATION SYSTEM IS DAMAGED OR TURNED OFF DURING CONSTRUCTION ACTIVITIES, IT WILL BE THE RESPONSIBILITY OF THE CONTRACTOR TO HAND WATER ALL PLANT MATERIAL AS NEEDED.

JPI Bois D Arc, McKinney Code Calculations Chart		
Site Data	AC	SF
Total Site Area	14.95	651,246
Surface Parking Spaces	419	
Site Landscape Area	Required (% / SF)	Provided (% / SF)
10% of site to be landscaped	10%	25%
	65,125	164,033
Street Frontage	Required	Provided
Bois D Arc Road (780 LF)		
1 tree/ 30 LF	26	26
*Existing utilities and Easement easements through landscape setback		
Street Yard	Required (% / SF)	Provided (% / SF)
Permanent landscape area within street yard	15%	78%
Parking Lot	Required	Provided
1 shade tree/ 10 parking spaces (419 provided parking spaces) (126 garages)	55	88

ROW / Property Line	Required Trees	PL	Linear Foot	Required	Provided
Bois D'arc Rd	1 tree/ 30 LF	North	1052	36	36
	1 tree/ 30 LF	East	763	26	26
	1 tree/ 30 LF	South	613	21	21
	1 tree/ 30 LF	West	1247	42	42

Mitigation Planting				
Species	Quantity	Caliper	Mitigation Credits	
Cedar Elm	8	4	32	
Live Oak	16	6	96	
Red Oak	9	6	54	
		Mitigation Credits	182	
<b>City of McKinney Required Mitigation Credits:</b>			182.0	
<b>Total Credits Provided:</b>			182	

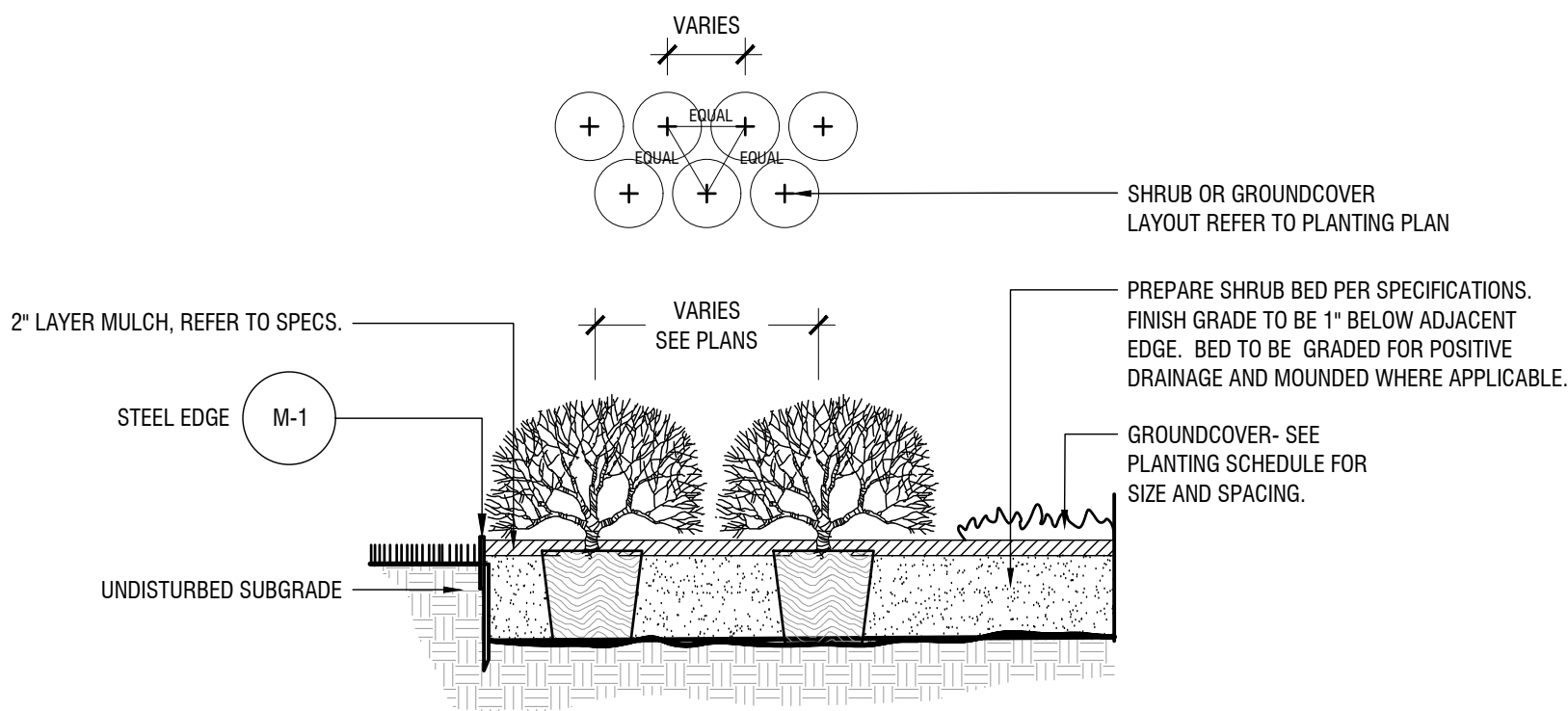
# PLANT SCHEDULE

TREES	COMMON / BOTANICAL NAME	CONT.	SIZE	SPACING	QTY	REMARKS
○	Cedar Elm / <i>Ulmus crassifolia</i>	4" cal	12'-14" Ht		48	88B, NURSERY GROWN, MATCHED, FULL, WELL-BRANCHED, STRONG CENTRAL LEADER, 7' CLEAR AT SIDEWALKS, 14' CLEAR AT FIRELINE
○	Cedar Elm - Mitigation / <i>Ulmus crassifolia</i>	4" cal	12'-14" Ht		8	88B, NURSERY GROWN, MATCHED, FULL, WELL-BRANCHED, STRONG CENTRAL LEADER, 7' CLEAR AT SIDEWALKS, 14' CLEAR AT FIRELINE
○	Chinkapin Oak / <i>Quercus muhlenbergii</i>	4" cal	12'-14" Ht		44	88B, NURSERY GROWN, MATCHED, FULL, WELL-BRANCHED, STRONG CENTRAL LEADER, 7' CLEAR AT SIDEWALKS, 14' CLEAR AT FIRELINE
○	Live Oak / <i>Quercus virginiana</i>	4" cal	12'-14" Ht		77	88B, NURSERY GROWN, MATCHED, FULL, WELL-BRANCHED, STRONG CENTRAL LEADER, 7' CLEAR AT SIDEWALKS, 14' CLEAR AT FIRELINE
○	Live Oak - Mitigation / <i>Quercus virginiana</i>	6" cal	14'-16" Ht		16	88B, NURSERY GROWN, MATCHED, FULL, WELL-BRANCHED, STRONG CENTRAL LEADER
○	October Glory Red Maple / <i>Acer rubrum</i> 'October Glory'	4" cal	12'-14" Ht		16	88B, NURSERY GROWN, MATCHED, FULL, WELL-BRANCHED, STRONG CENTRAL LEADER, 7' CLEAR AT SIDEWALKS, 14' CLEAR AT FIRELINE
○	Red Oak / <i>Quercus rubra</i>	4" cal	12'-14" Ht		44	88B, NURSERY GROWN, MATCHED, FULL, WELL-BRANCHED, STRONG CENTRAL LEADER, 7' CLEAR AT SIDEWALKS, 14' CLEAR AT FIRELINE
○	Red Oak - Mitigation / <i>Quercus rubra</i>	6" cal	14'-16" Ht		9	88B, NURSERY GROWN, MATCHED, FULL, WELL-BRANCHED, STRONG CENTRAL LEADER, 7' CLEAR AT SIDEWALKS, 14' CLEAR AT FIRELINE
ORNAMENTAL TREES	COMMON / BOTANICAL NAME	CONT.	SIZE	SPACING	QTY	REMARKS
○	Cholla Tree / <i>Yucca agaves-cactoides</i>	45 gal	6'-10" Ht		11	CONTAINER, NURSERY GROWN, MATCHED, FULL, WELL-BRANCHED, MULTIPLE TRUNK (3-5 TRUNKS), TREE FORM
○	Cholla / <i>Yucca baccata</i>	45 gal	6'-10" Ht		4	CONTAINER, NURSERY GROWN, MATCHED, FULL, WELL-BRANCHED, MULTIPLE TRUNK (3-5 TRUNKS)
○	Savannah Holly / <i>Ilex x obtusifolia</i> 'Savannah'	45 gal	6'-10" Ht		6	CONTAINER, NURSERY GROWN, MATCHED, FULL, WELL-BRANCHED, SINGLE TRUNK, TREE FORM
○	Texas Redbud / <i>Cercis canadensis</i> texensis	45 gal	6'-10" Ht		14	CONTAINER, NURSERY GROWN, MATCHED, FULL, WELL-BRANCHED, SINGLE TRUNK
SHRUBS	COMMON / BOTANICAL NAME	CONT.	SIZE	SPACING	QTY	REMARKS
○	Autumn Sage / <i>Salvia greggii</i>	3 gal	18" h x 18" w	24" OC	72	CONTAINER, NURSERY GROWN, MATCHED AND WELL ROOTED
○	Blue Gramma / <i>Bouteloua gracilis</i> 'Blonde Ambition'	3 gal	18" h x 12" w	36" OC	841	CONTAINER, NURSERY GROWN, MATCHED AND WELL ROOTED
○	Compact Texas Ranger / <i>Leucophyllum frutescens</i> 'Green Cloud'	3 gal	36" h x 24" w	36" OC	322	CONTAINER, NURSERY GROWN, MATCHED AND WELL ROOTED
○	Dwarf Glossy Abelia / <i>Abelia x grandiflora</i> 'Dwarf'	3 gal	36" h x 24" w	36" OC	240	CONTAINER, NURSERY GROWN, MATCHED AND WELL ROOTED
○	Dwarf Podocarpus / <i>Podocarpus macrophyllus</i> 'Pringle'	3 gal	18" h x 18" w	36" OC	140	CONTAINER, NURSERY GROWN, MATCHED AND WELL ROOTED
○	Dwarf Southern Wax Myrtle / <i>Myrica pauciflora</i>	3 gal	36" h x 30" w	36" OC	512	CONTAINER, NURSERY GROWN, MATCHED AND WELL ROOTED
○	Emerald Snow Loropetalum / <i>Loropetalum chinense</i> 'Emerald Snow'	1 gal	12" h x 12" w	36" OC	117	CONTAINER, NURSERY GROWN, MATCHED AND WELL ROOTED
○	Heavenly Bamboo / <i>Nandina domestica</i>	1 gal	12" h x 12" w	36" OC	47	CONTAINER, NURSERY GROWN, MATCHED AND WELL ROOTED
○	Hot Lips Sage / <i>Salvia microphylla</i> 'Hot Lips'	1 gal	12" h x 12" w	36" OC	45	CONTAINER, NURSERY GROWN, MATCHED AND WELL ROOTED
○	Meady Blue Sage / <i>Salvia torreyana</i>	1 gal	12" h x 12" w	36" OC	64	CONTAINER, NURSERY GROWN, MATCHED AND WELL ROOTED
○	Noble Stevens Holly / <i>Ilex x 'Noble R Stevens'</i>	10 gal	5' h x 2' w	As shown	2	CONTAINER, NURSERY GROWN, MATCHED AND WELL ROOTED
○	Red Yucca / <i>Yucca repandens</i>	3 gal	18" h x 12" w	36" OC	71	CONTAINER, NURSERY GROWN, MATCHED AND WELL ROOTED
○	Rose Creek Abelia / <i>Abelia x chinensis</i> 'Rose Creek'	1 gal	12" h x 12" w	36" OC	57	CONTAINER, NURSERY GROWN, MATCHED AND WELL ROOTED
○	Rosemary / <i>Rosmarinus officinalis</i>	3 gal	18" h x 18" w	36" OC	105	CONTAINER, NURSERY GROWN, MATCHED AND WELL ROOTED
○	Side Oaks Grama / <i>Bouteloua curtipendula</i>	1 gal	12" h x 6" w	36" OC	239	CONTAINER, NURSERY GROWN, MATCHED AND WELL ROOTED

ALL PLANT QUANTITIES LISTED ARE FOR INFORMATION ONLY. IT IS THE CONTRACTOR'S RESPONSIBILITY TO PROVIDE FULL COVERAGE IN ALL PLANTING AREAS AS SPECIFIED IN THE PLANT SCHEDULE AND VERIFY ALL QUANTITIES.

GROUND COVERS	COMMON / BOTANICAL NAME	CONT.	SIZE	SPACING	QTY	REMARKS
○	Sunshine Lignumvitae / <i>Lignumvitae</i> 'Sunshine'	3 gal	18" h x 18" w	36" OC	181	CONTAINER, NURSERY GROWN, MATCHED AND WELL ROOTED
○	White Mully Grass / <i>Muhlenbergia capillaris</i> 'White Cloud'	1 gal	12" h x 6" w	36" OC	312	CONTAINER, NURSERY GROWN, MATCHED AND WELL ROOTED
○	Asian Jasmine / <i>Trachelopogon asiaticum</i>	1 gal	8" h x 8" w	18" o.c.	2,851 sf	CONTAINER, NURSERY GROWN, MATCHED AND WELL ROOTED
○	Berkley Sedge / <i>Carex diandra</i>	1 gal	8" h x 8" w	18" o.c.	2,739 sf	CONTAINER, NURSERY GROWN, MATCHED AND WELL ROOTED
○	Bermuda Grass / <i>Cynodon dactylon</i>	seed			120,865 sf	REFER TO SPECIFICATIONS
○	Big Blue Lysart / <i>Liriodendron</i> 'Big Blue'	1 gal	8" h x 8" w	18" o.c.	1,427 sf	CONTAINER, NURSERY GROWN, MATCHED AND WELL ROOTED
○	Black Eye Susan / <i>Rudbeckia hirta</i>	1 gal	12" h x 6" w	18" o.c.	1,589 sf	CONTAINER, NURSERY GROWN, MATCHED AND WELL ROOTED
○	Butterfly Iris / <i>Iris sibirica</i>	1 gal	12" h x 6" w	24" o.c.	691 sf	CONTAINER, NURSERY GROWN, MATCHED AND WELL ROOTED
○	New Gold Lantana / <i>Lantana x 'New Gold'</i>	1 gal	12" h x 18" w	24" o.c.	603 sf	CONTAINER, NURSERY GROWN, MATCHED AND WELL ROOTED
○	Prairie Verbena / <i>Gambusia bipinnatifida</i>	1 gal	8" h x 8" w	18" o.c.	773 sf	CONTAINER, NURSERY GROWN, MATCHED AND WELL ROOTED
○	Purple Coneflower / <i>Echinacea purpurea</i>	1 gal	12" h x 6" w	18" o.c.	1,194 sf	CONTAINER, NURSERY GROWN, MATCHED AND WELL ROOTED
○	Watercress / <i>Eryngium fortunei</i>	1 gal	8" h x 8" w	18" o.c.	8,000 sf	CONTAINER, NURSERY GROWN, MATCHED AND WELL ROOTED
○	Elk Deer / <i>Rhus x 'Elk Deer'</i>	1 gal	12" h x 6" w	24" o.c.	679 sf	CONTAINER, NURSERY GROWN, MATCHED AND WELL ROOTED

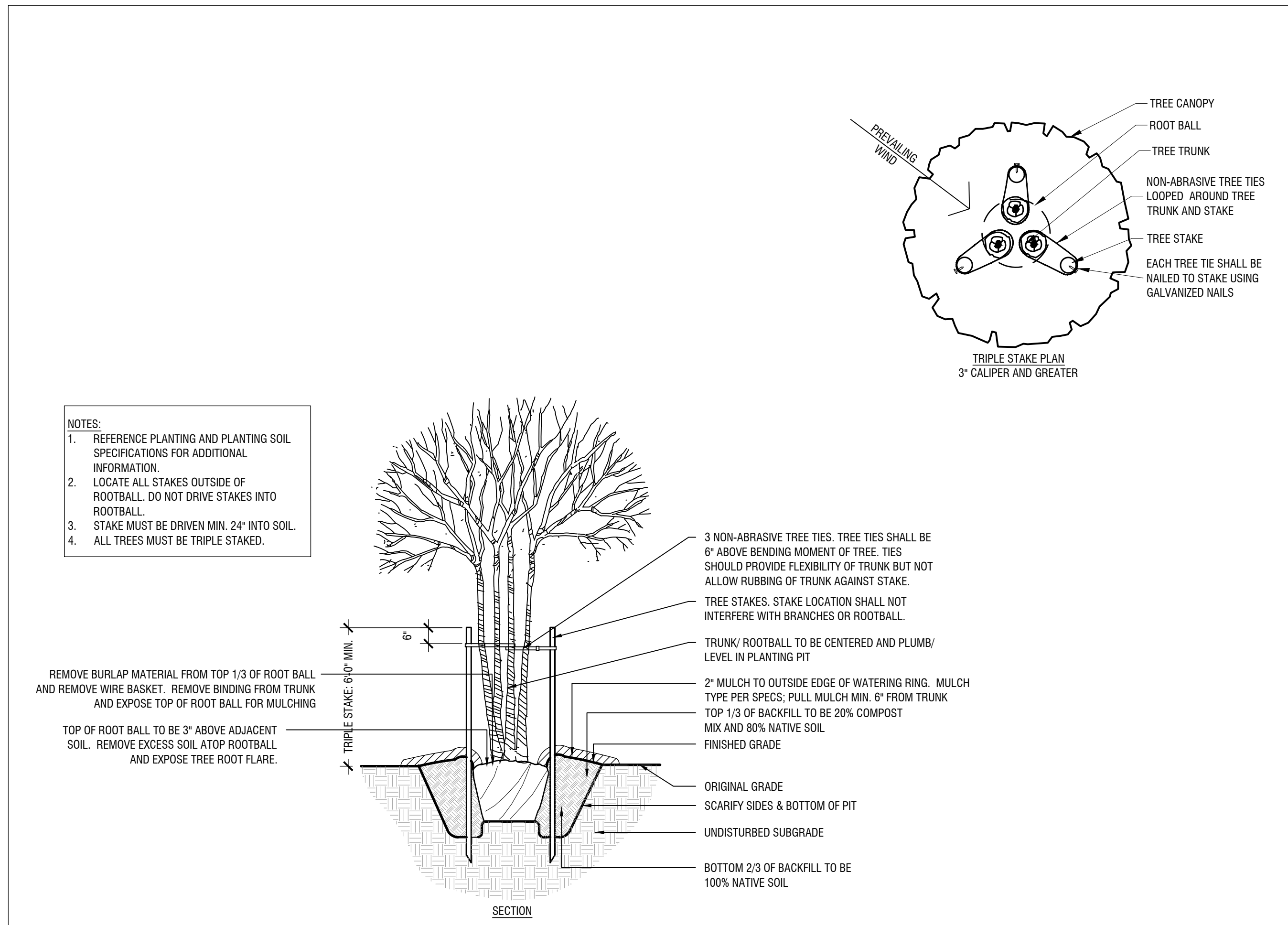
ALL PLANT QUANTITIES LISTED ARE FOR INFORMATION ONLY. IT IS THE CONTRACTOR'S RESPONSIBILITY TO PROVIDE FULL COVERAGE IN ALL PLANTING AREAS AS SPECIFIED IN THE PLANT SCHEDULE AND VERIFY ALL QUANTITIES.



# Shrubs & Groundcover

Scale: 1/2" = 1'-0"

C



- NOTES:
- REFERENCE PLANTING AND PLANTING SOIL SPECIFICATIONS FOR ADDITIONAL INFORMATION.
  - LOCATE ALL STAKES OUTSIDE OF ROOTBALL. DO NOT DRIVE STAKES INTO ROOTBALL.
  - STAKE MUST BE DRIVEN MIN. 24" INTO SOIL.
  - ALL TREES MUST BE TRIPLE STAKED.

- REMOVE BURLAP MATERIAL FROM TOP 1/3 OF ROOT BALL AND REMOVE WIRE BASKET. REMOVE BINDING FROM TRUNK AND EXPOSE TOP OF ROOT BALL FOR MULCHING
- TOP OF ROOT BALL TO BE 3" ABOVE ADJACENT SOIL. REMOVE EXCESS SOIL ATOP ROOTBALL AND EXPOSE TREE ROOT FLARE.
- TRIPLE STAKE 6"Ø MIN.
- 3 NON-ABRASIVE TREE TIES. TREE TIES SHALL BE 6" ABOVE BENDING MOMENT OF TREE. TIES SHOULD PROVIDE FLEXIBILITY OF TRUNK BUT NOT ALLOW RUBBING OF TRUNK AGAINST STAKE.
- TREE STAKES. STAKE LOCATION SHALL NOT INTERFERE WITH BRANCHES OR ROOTBALL.
- TRUNK/ ROOTBALL TO BE CENTERED AND PLUMB/ LEVEL IN PLANTING PIT
- 2" MULCH TO OUTSIDE EDGE OF WATERING RING. MULCH TYPE PER SPECS; PULL MULCH MIN. 6" FROM TRUNK
- TOP 1/3 OF BACKFILL TO BE 20% COMPOST MIX AND 80% NATIVE SOIL
- FINISHED GRADE
- ORIGINAL GRADE
- SCARIFY SIDES & BOTTOM OF PIT
- UNDISTURBED SUBGRADE
- BOTTOM 2/3 OF BACKFILL TO BE 100% NATIVE SOIL
- SECTION

# Canopy Tree

Scale: 1/2" = 1'-0"

A

**Kimley»Horn**

© 2022 KIMLEY-HORN AND ASSOCIATES, INC.  
13455 NOEL ROAD, SUITE 700, DALLAS, TX 75240  
PHONE: 972-770-1300 FAX: 972-239-3520  
WWW.KIMLEY-HORN.COM

TEXAS REGISTERED ENGINEERING FIRM F-928

STATE OF TEXAS  
LANDSCAPE ARCHITECT  
ANDREW J. BUKE  
3077  
04/17/2023

KHA PROJECT	064446509
DATE	APRIL, 2023
SCALE	AS SHOWN
DESIGNED BY	AJB
DRAWN BY	HPD
CHECKED BY	AJB

# PLANTING CALCS AND DETAILS

# BOIS D'ARC CITY OF MCKINNEY COLLIN COUNTY, TEXAS

SHEET NUMBER  
**L5.03**

Plotted By: Dicks, Harrison Date: April 17, 2023 05:23:45pm File Path: K:\MKN\_LALP\Projects\064446509 - JPI Bois D Arc\CAD Sheets\CV\L5.03\_CODE\_PLANTING\_PLANS.dwg This document, together with the concepts and designs presented herein, is an instrument of service, is intended only for the specific purpose and client for which it was prepared. Reuse of any part hereof without written authorization and adaptation by Kimley-Horn and Associates, Inc. shall be without liability to Kimley-Horn and Associates, Inc.