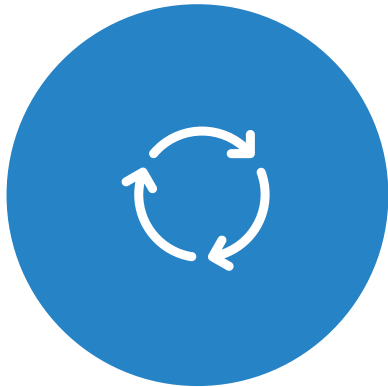




CONSOLIDATED PLAN SUMMARY PRESENTATION

2025

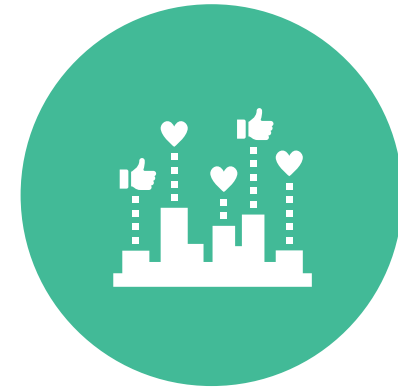
CREATING A CONSOLIDATED PLAN



THE PROCESS



THE CONTENT

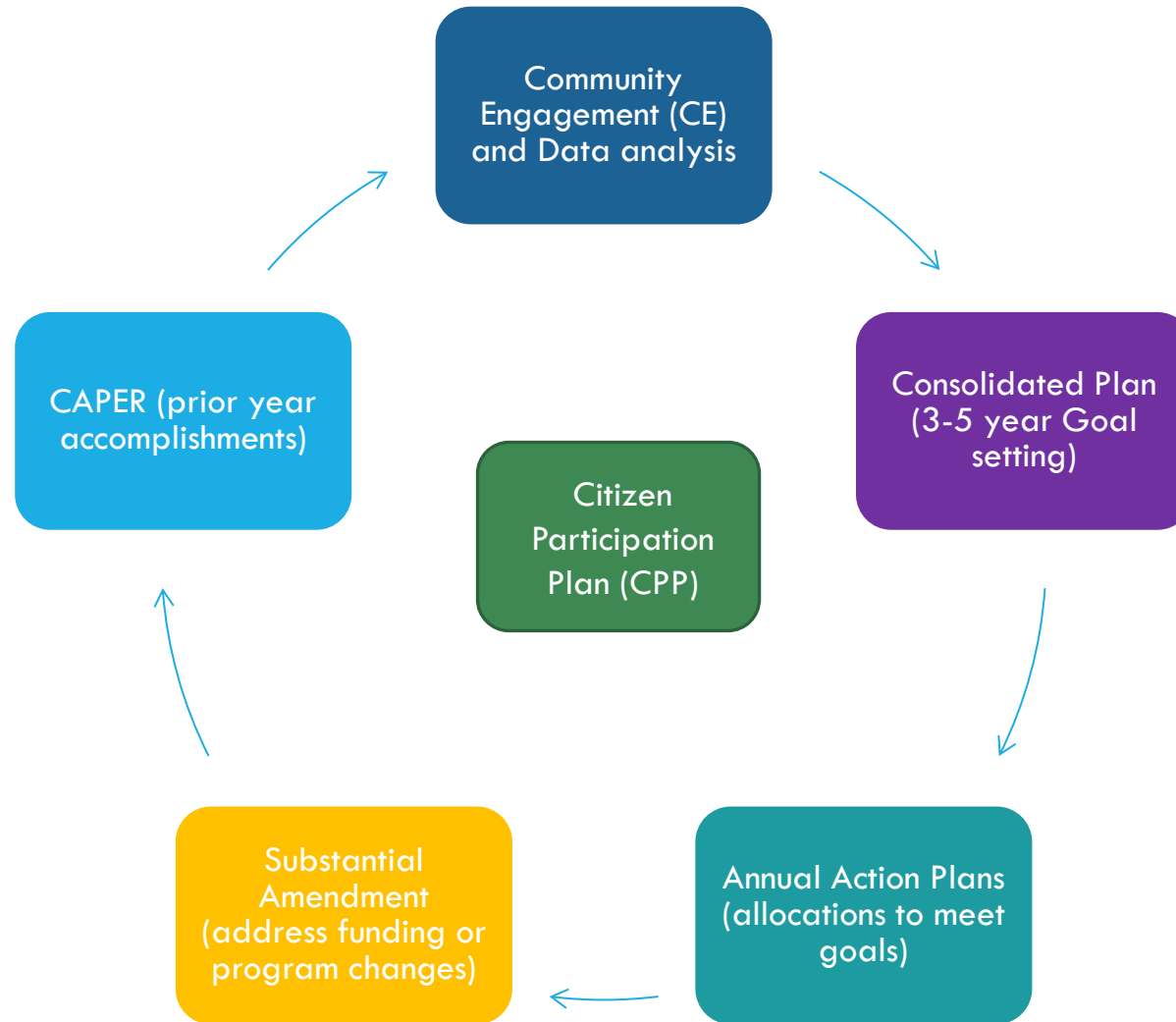


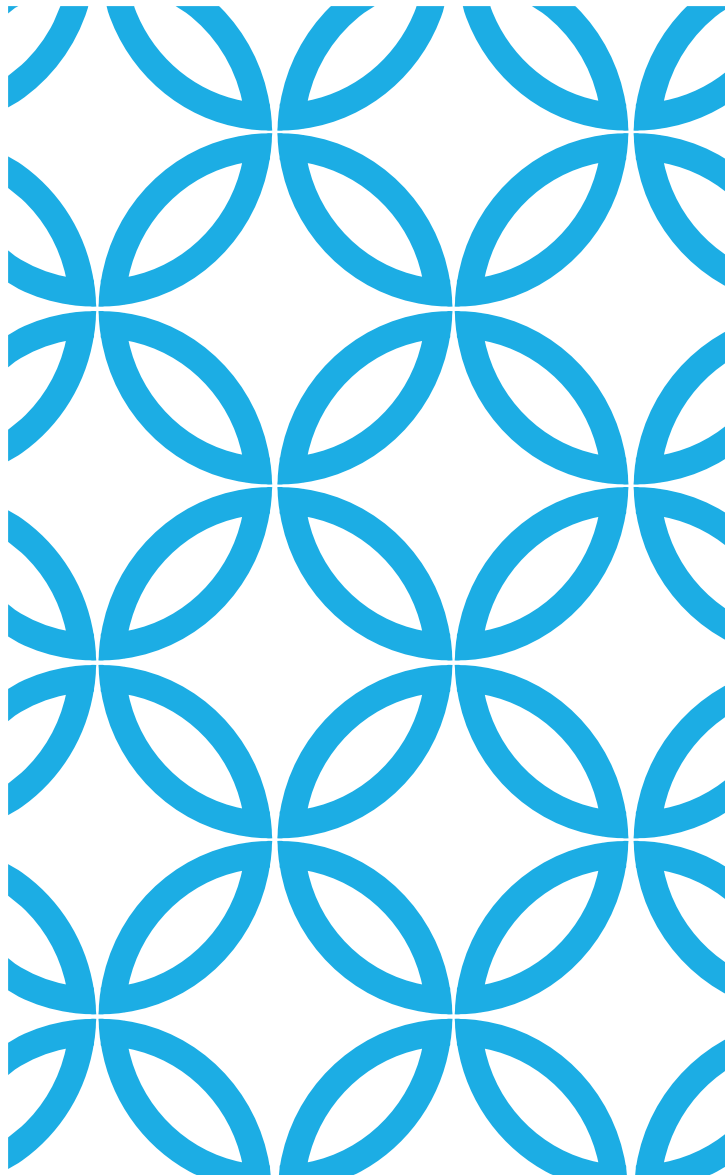
THE PRODUCT

THE PROCESS

Lifecycle of Federal Grant Planning

FEDERAL GRANTS PLAN/REPORT CYCLE





THE START OF THIS WORK: CITIZEN PARTICIPATION PLAN

Informing our McKinney residents how they can participate

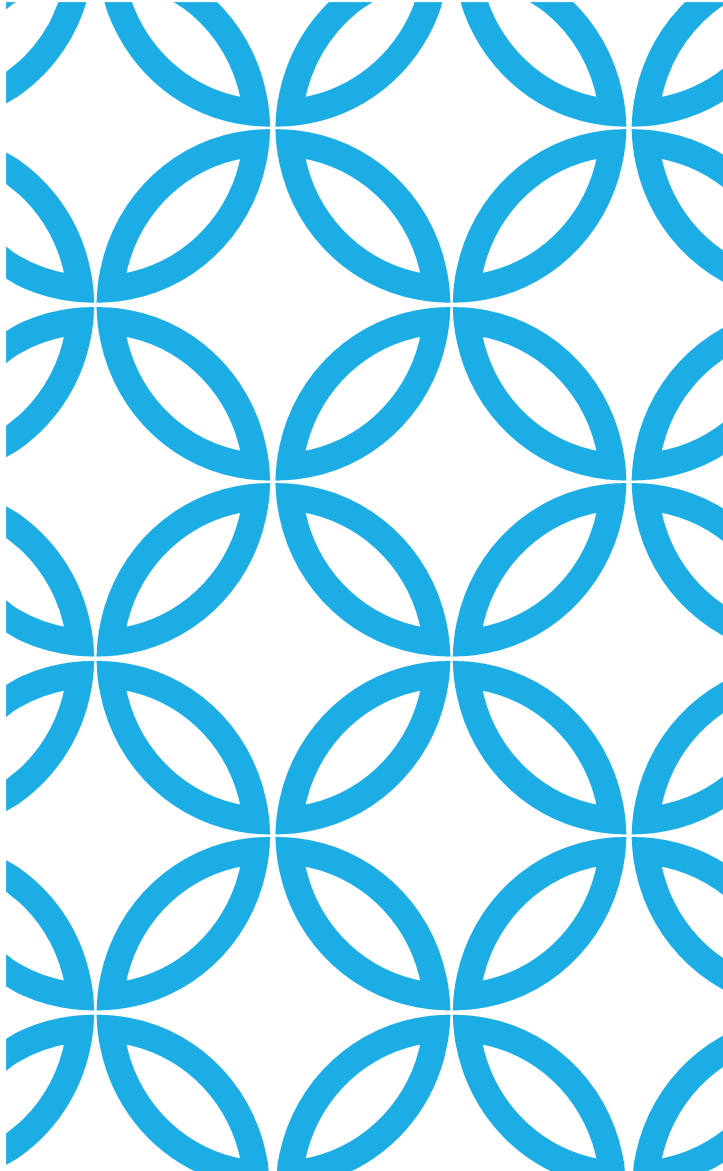
CPP PAVES THE WAY FOR PARTICIPATION BY...

- ☐ LMI people; especially those living in areas of Slum & Blight or revitalization areas
- ☐ People of Color (Minorities) and those whose primary language is not English
- ☐ Continuum of Care members
- ☐ Community, Business and Faith based organizations

- ☐ Broadband Internet providers and digital access advocates
- ☐ Floodplain, public land and water resource management agencies
- ☐ Public Housing residents
- ☐ Neighborhood change advocates
- ☐ Public and Private partners

IMPACT OF DISASTER PLANNING ON CPP

- ❑ Similar to coronavirus pandemic, McKinney should anticipate process changes in the event of local or national disasters.
- ❑ Include in our CPP how to rapidly shift resources to address eligible disaster relief funding with CDBG, FEMA or other funding.
- ❑ Determine how Planning, Engineering, Public Safety and other departments will participate?
- ❑ Will this trigger a substantial amendment to the Consolidated Plan and/or Annual Action Plan? If so how will notice and public hearing processes be affected?



COMMUNITY ENGAGEMENT (CE)

Requirements and ideas for increasing the communities and people “at your table” to enrich your consolidated plan.

HUD'S CE REQUIREMENTS

- ☐ Hospitals, foster care, corrections programs and institutions that handle discharge for people with housing instability
- ☐ Business and civic leaders
- ☐ State and local public health and child welfare agencies dealing with lead-based paint exposure risks

- ☐ Adjacent units of local gov't and regional planning on Non-housing community development needs
Regional transit, infrastructure needs
- ☐ Public Housing Authorities on fair housing strategies
assist troubled PHA
LMI housing needs, HCV
neighborhood improvements

COMMUNITY ENGAGEMENT

Language LEP participation

Emerging communities

Rural/Urban networks

People with disabilities

HOW CAN MCDC GIVE SUPPORT?

Participation of the Consolidated Plan

SUPPORT....

- ☐ Help tell the story!
- ☐ Provide data, resources and information!
- ☐ Participate in hearings, surveys and planning.

RESULTS WILL
PRODUCE A
GREAT
COMPREHENSIVE
PLAN FOR
MCKINNEY

