

---

# DOWNTOWN MCKINNEY

TEXAS • EST. 1848

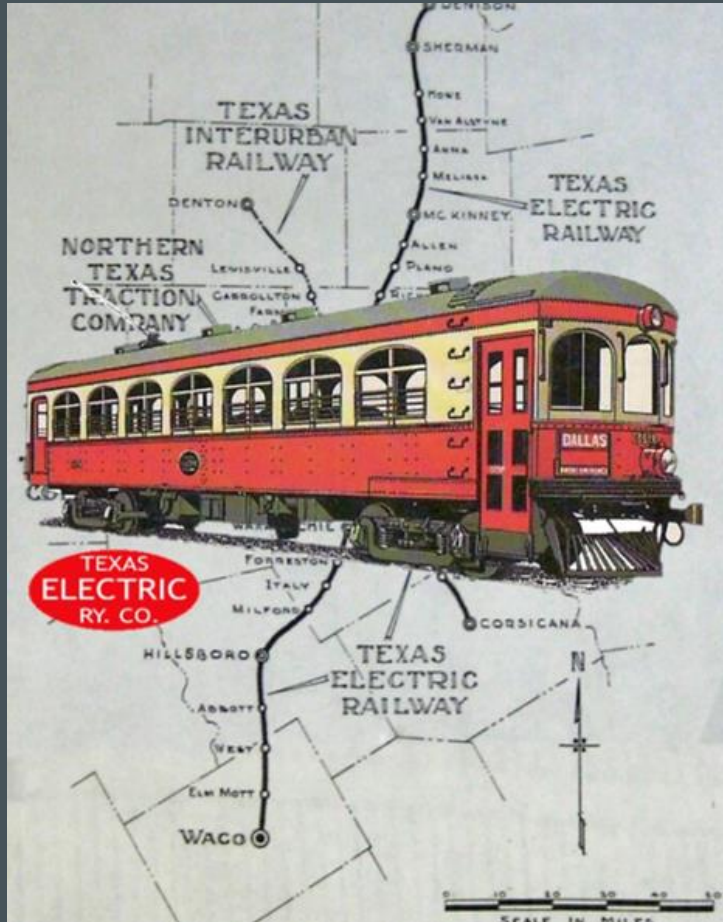
MCKINNEY DOWNTOWN TROLLEY  
PRESENTATION





## Background of the DASH program

- Limitations of the service as it is now
  - No fixed route
  - Limited rider capacity
  - Limited A/C and Heat
  - Small range, battery cycling breaks
- Tradeoffs made in the current service (on call vs fixed route)
- Lessons learned from over 4+ years of running DASH
- Future life for the electric vehicle supporting security in Downtown

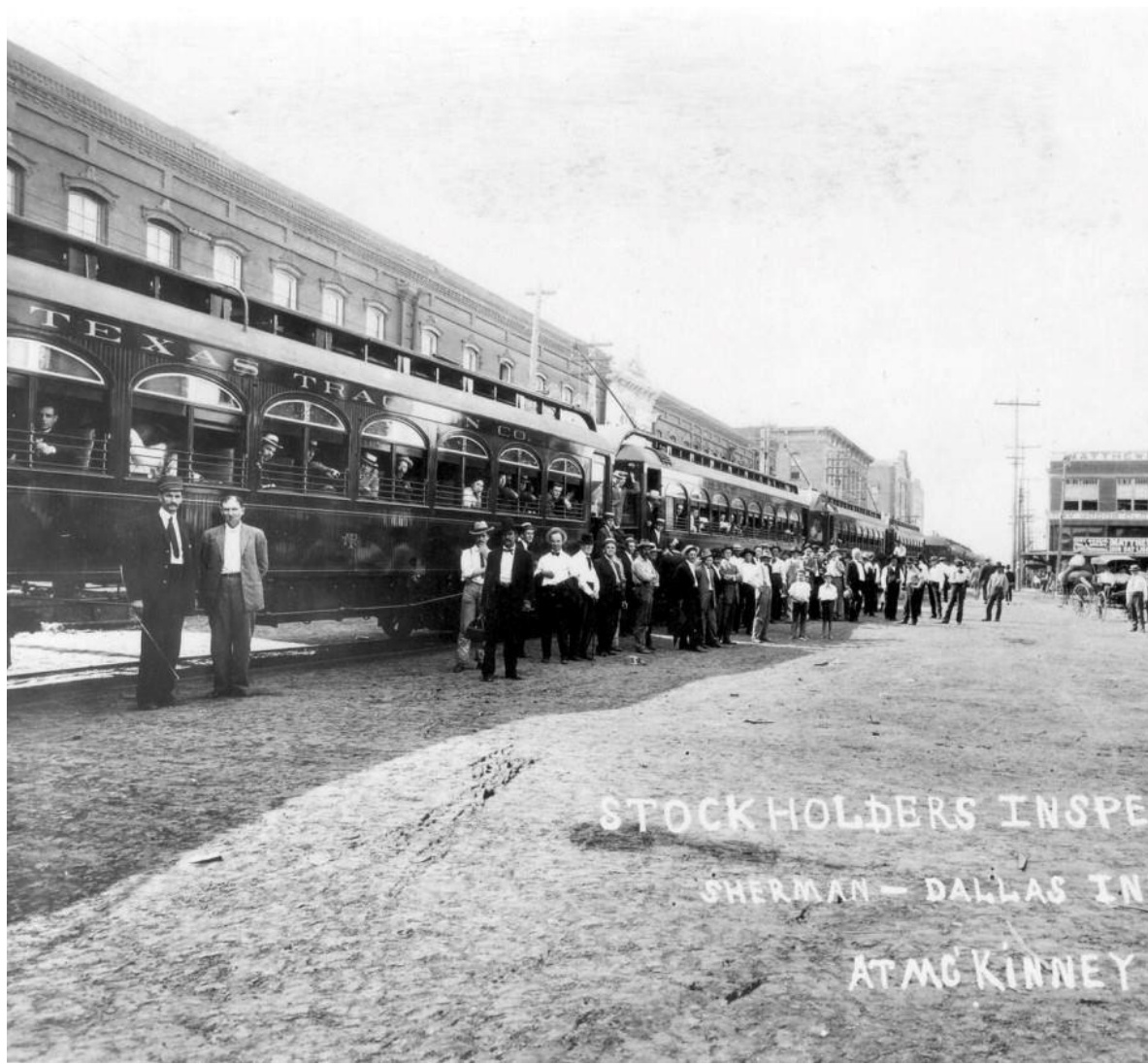


## Building on our Rich History of the Interurban

The Interurban played a significant role in shaping the history of McKinney, leaving a lasting impact on the city's development.

Introduced in 1908, the Texas Electric Railway's Interurban system provided a revolutionary mode of transportation, connecting McKinney to neighboring towns and cities. The Interurban line passed through Downtown McKinney and became a key connection to DFW, attracting customers, businesses, and investment to McKinney.

For four decades, until its closure in 1948, the Interurban was an emblem of progress and connectivity, helping to transform McKinney into the thriving city it is today.





## New Trolley Features:

- Increased Ridership Capacity (14 passenger capacity)
- Climate-Controlled Riding Experience, Facilitating consumer traffic during extreme weather conditions
- Wooden interior with multiple layouts available
- Faster speeds and ability to travel on highways, for special events.
- Enhanced Accessibility with ADA Compliance
- Right-sized to allow increased maneuverability, a non CDL Driver, and allow easy ADA Access.
- Increased reliability and the ability to maintain the vehicle inhouse
- Increased safety for all guests



## Highlighting the History of the Interurban:

We plan on recreating the features of the Interurban in the new trolley, adding elements that will pay homage to details found on the interurban:

- Paint scheme
- Handrails
- Window detailing
- Historic-Inspired signage
- Added light fixtures
- Interior details and signage





## SUCCESSFUL TROLLEY CASE STUDIES

Looking to learn the lessons from other successful trolley operations:

- Kansas City Street-Car
- New Orleans
- Dallas, McKinney Avenue
- El Paso
- Galveston
- Eureka Springs







## Boosting Tourism and Entertainment

- More than just a shuttle, an added entertainment attraction to the Downtown visitor experience
- Added flexibility can support special events and reach locations off the square
- Incorporate storytelling in the rider experience
- Increasing the exploration and exposure of the entire Downtown area



# Increased Connectivity

Connecting the core of Downtown with new East McKinney Developments:

- New City Hall
- Flour Mill
- New Apartment developments
- Silos
- Tupps Brewery

New route includes convenient access to off site parking locations including the Chestnut parking garage and surface lots to the north of the square.



# Vehicle Purchase Budget

Main Street will cover interior and exterior decoration and all annual operating expenses.

## Estimated Budget for a new Downtown Trolley:

1	Body and Chassis Base Price	178,578.92
1	AC, ADA and Paint options	26,555.00
<b>Total Project Budget</b>		<b>\$203,133.92</b>
	City Contribution	100,000.00
<b>Total MCDC Funding Request</b>		<b>\$103,133.92</b>

## Estimated Timeline

Place order with Specialty Vehicles: August 01, 2023

Vehicle build and customization completion: Mid December 2023



THANK YOU

DOWNTOWN MCKINNEY

TEXAS • EST. 1848