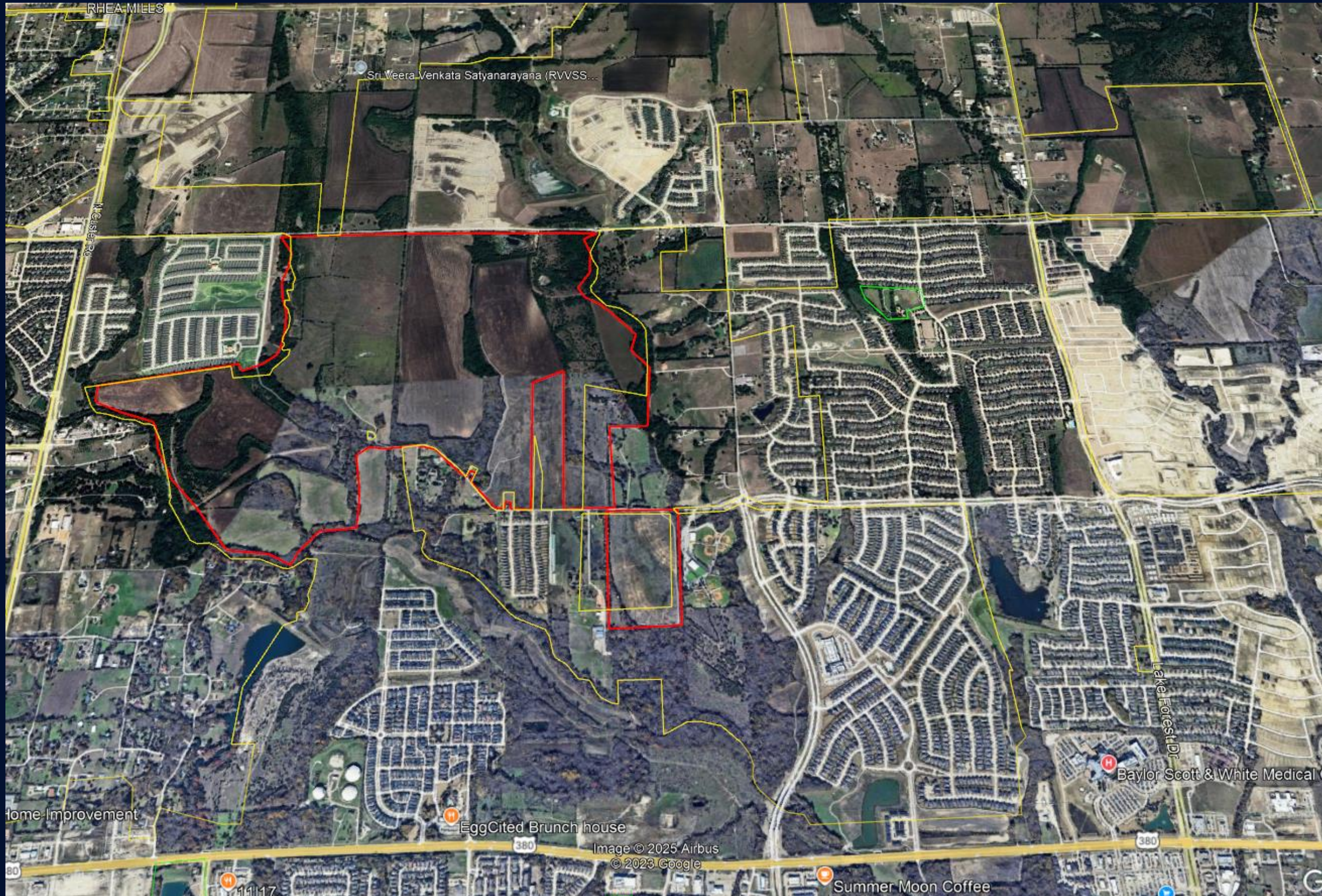




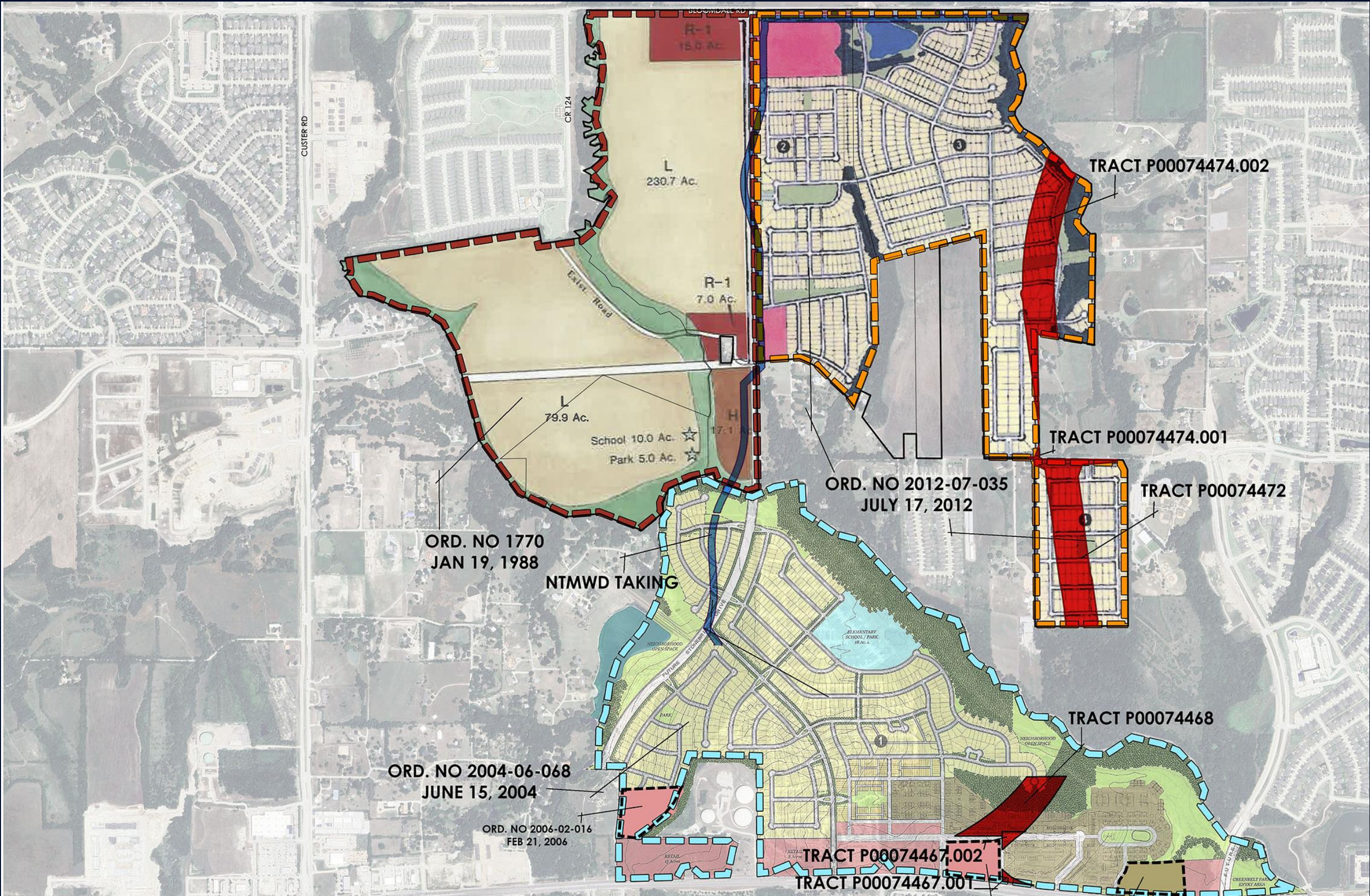
Huntington Park

City of McKinney

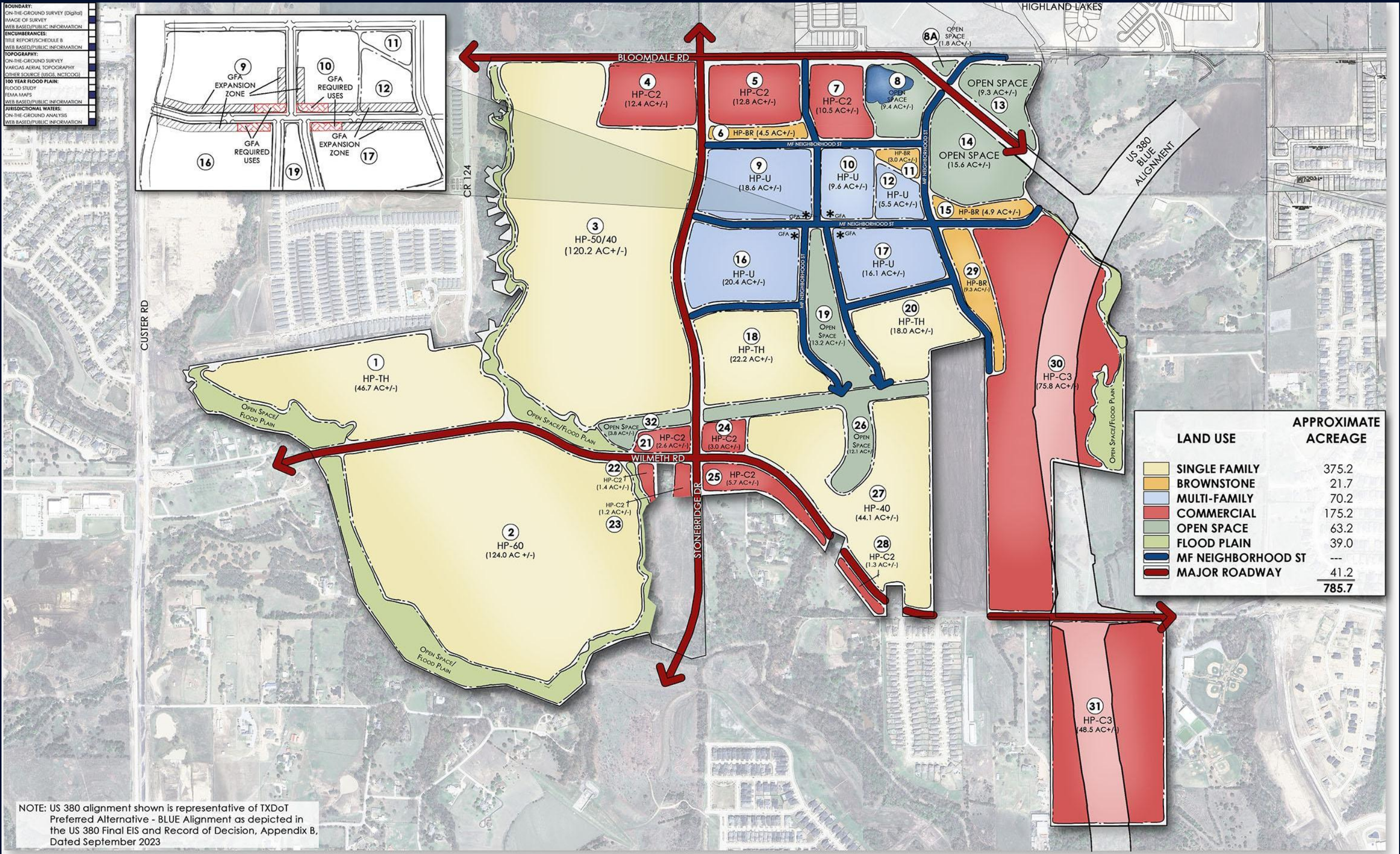
City Boundary



Existing Zoning



Requested Zoning

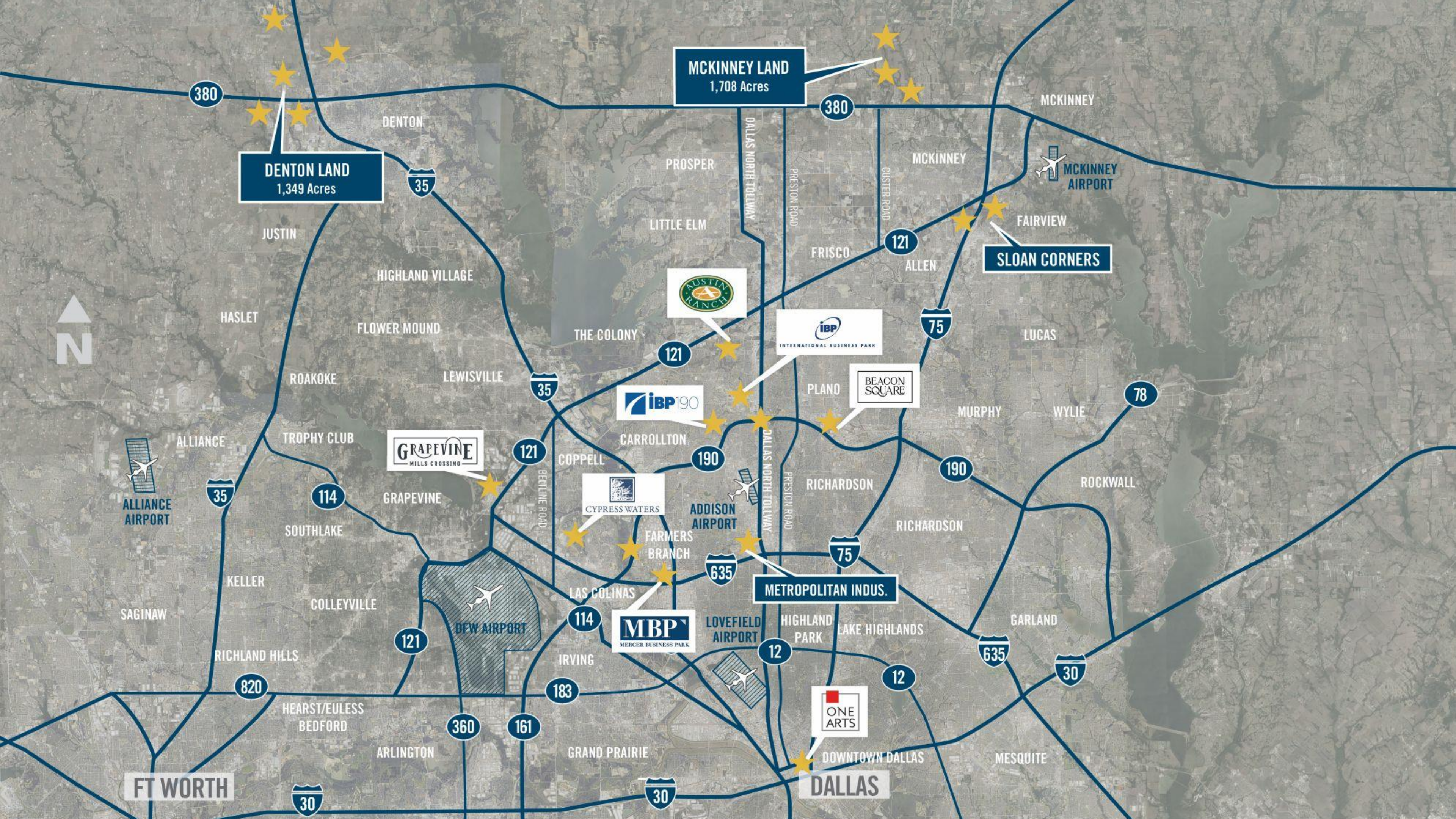


Triggers for Development

1. Prior to any building permits being issued for any multi-family development in Huntington Park, at least 12 acres collectively, as shown on the Huntington Park Land Use Exhibit, shall either be developed or under construction.
2. Prior to any building permits being issued for any multi-family development in Huntington Park, the section of the US Highway 380 By-Pass which traverses the Huntington Park development shall be under construction, or 100 acres collectively, of “single-family” development (detached and/or attached) within Huntington Park shall have a recorded plat, whichever is sooner.

The background is a dark blue gradient with decorative wavy lines in a lighter blue shade. A thin vertical gold line is positioned to the left of the text.

Billingsley Company



MCKINNEY LAND
1,708 Acres

DENTON LAND
1,349 Acres

SLOAN CORNERS

GRAPEVINE
MILLS CROSSING

IBP 190

IBP
INTERNATIONAL BUSINESS PARK

BEACON SQUARE

MBP
MERCER BUSINESS PARK

METROPOLITAN INDUS.

ONE ARTS

FT WORTH

DALLAS

ZONING STATS

Property	Acres Owned	Units Built	Built/Sold	Und. Const.	Units Zoned
Austin Ranch	1700	3897	1561	0	13,000
Cypress Waters	1600	2115	814	541	10,000
International Business Park	300	372	568	0	1,335
One Arts Plaza	10	61	0	0	Unlimited
Mercer Business Park	224	0	868	0	2,808
Grapevine Mills	20	432	0	0	432
Beacon Square	112	539	0	0	1,144
Sloan Corners / Fairview	238	0	0	0	2,000
Sloan Corners / Allen	261	0	0	479	4,000
Bush Tollway / Four Corners	29	0	0	0	300
Bush Midway / IBP 190	71.9	0	0	379	786
Gramercy on the Park	12	0	535	0	0
Denton	1349	0	0	0	0
McKinney	1708	0	0	0	1,800
TOTAL	7,635 Acres	11,762 Built	4,346 Sold	1,399 Const	37,605 Zoned

The background is a dark blue gradient with decorative wavy lines in a lighter blue shade. A thin vertical line is positioned to the left of the text.

Multi-Family

HASTINGS END



CYPRESS WATERS

HASTINGS END



CYPRESS WATERS



HASTINGS END



THE WHARF



135-150
247-250
335-350
447-450
547-550



APARTMENTS AT
THE SOUND



HARPER'S



HARPER'S
AT THE SOUND

WHARF TOWNHOMES



the
SOUD

OLYMPUS TOWNHOMES



the
SOUD

ROMBAUER TOWNHOMES



the
SOUD

OLYMPUS FLATS



CYPRESS WATERS

SAGE HILL



CYPRESS WATERS

THE HUDSON



STAG'S LEAP



WALLIS + BAKER



THE BEACON





THE BEACON

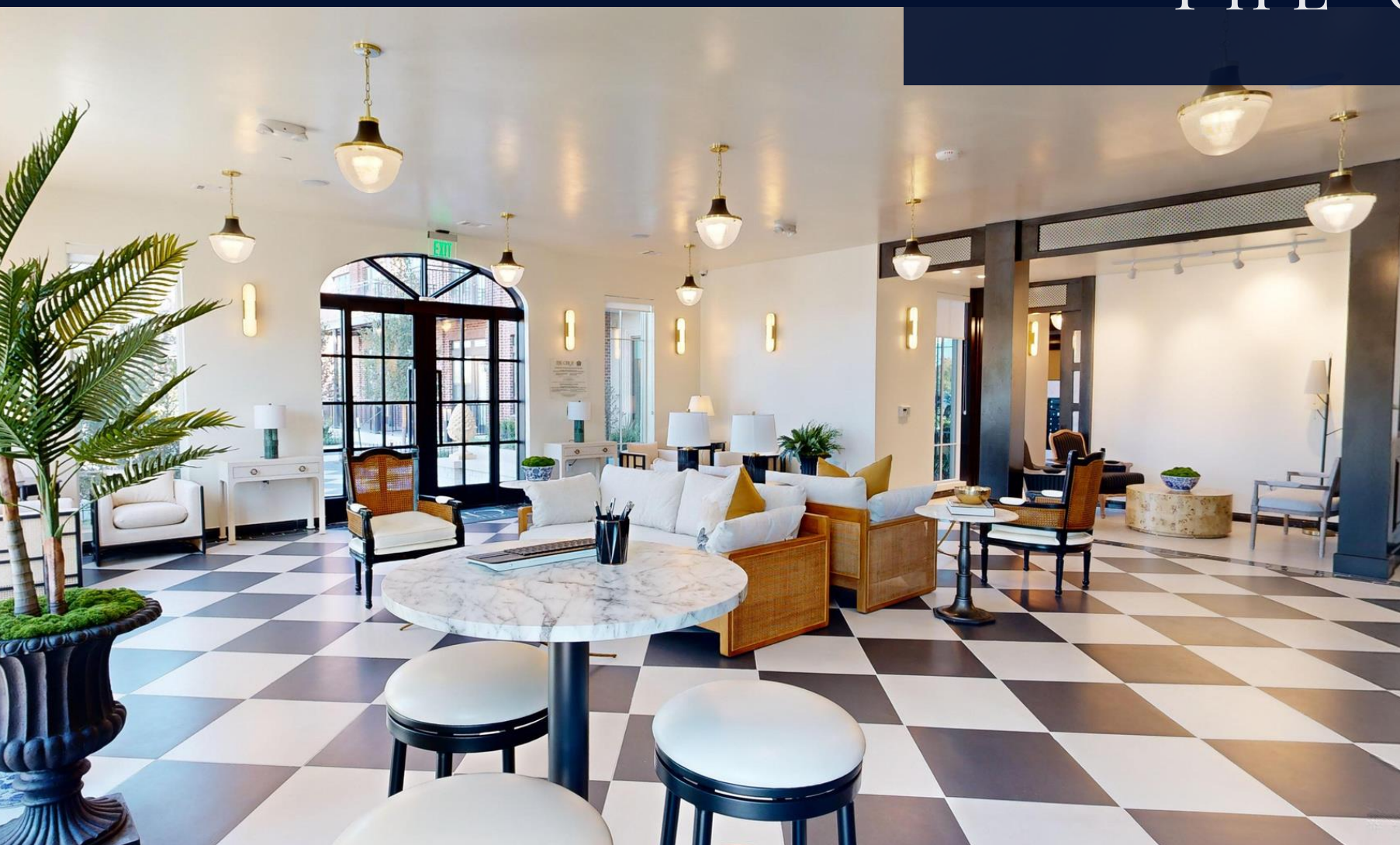


THE CHLOE





THE CHLOE



HARTWOOD I



HARTWOOD II





HARTWOOD II



The background is a dark blue gradient with decorative wavy lines in a lighter blue shade. A thin vertical line is positioned to the left of the text.

Parks & Green Space

THE COURTS



the
SOUD

THE COURTS



THE SOUND EVENTS



THE PUTTING GREEN



ART & SCULPTURE



HIKE & BIKE TRAILS

Kindness is the language
the deaf can hear
and the blind can see.
Mark Twain



THE SHACKS



The background is a dark blue gradient with decorative wavy lines in a lighter blue shade. A thin vertical line is positioned to the left of the text.

Videos



the
SOUND

AT CYPRESS WATERS



BILLINGSLEY
COMPANY