



Historic Marker Application

507 W. Lamar Street
Earl Wolford House

Historic Preservation Advisory Board
Meeting
September 7, 2023
5:30 pm



Construction and Preservation Priority

- Constructed: c. 1925
 - Wood frame on pier and beam
 - Horizontal expression
 - Exposed rafter tails and knee bracing
- Priority: High
- Style: Craftsman



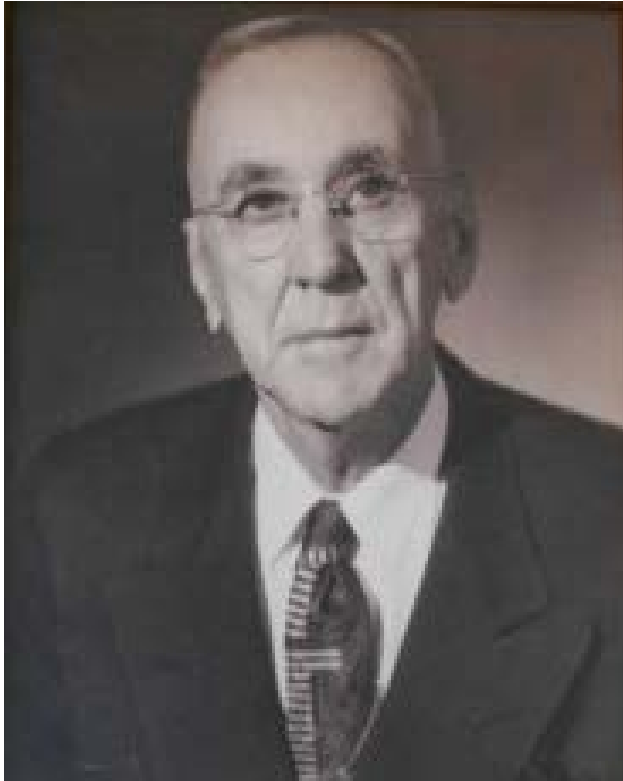
Above: 1985

Character Defining Features

- Eyebrow canopy at front entry with double brackets
- Exposed rafter tails
- Lap siding
- Clipped gable ends



Historic Images



Left: Earl Y. Wolford (1889-1968)

Right: Lottie (Huffman) Wolford (1893-1993)

Historic Images



Earl & Lottie Wolford,
undated



*Above: 1985
Below: 2015*



Elevations- Past



Left: Details at front entrance

Right: Front elevation

Elevations - Current



*Left: NE Oblique (front and east side)
Below: Rear*



Elevations - Current