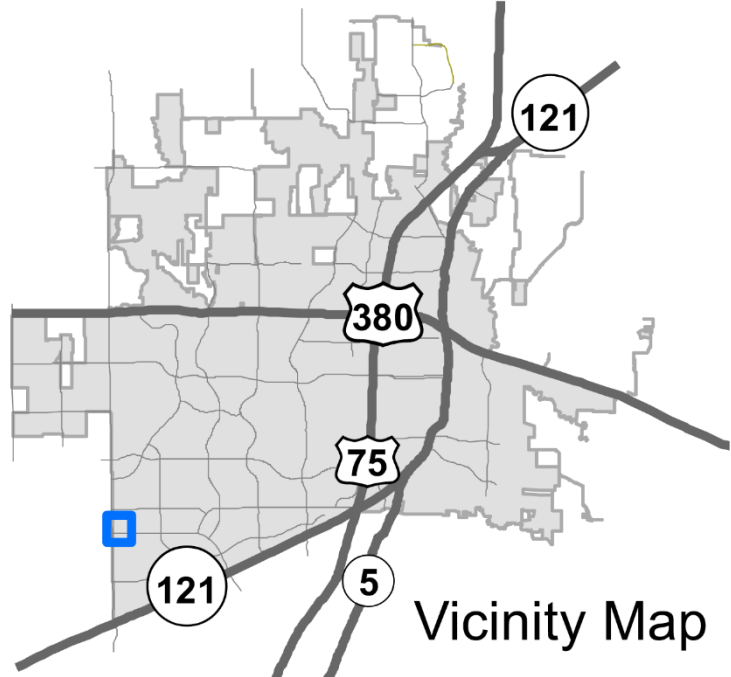
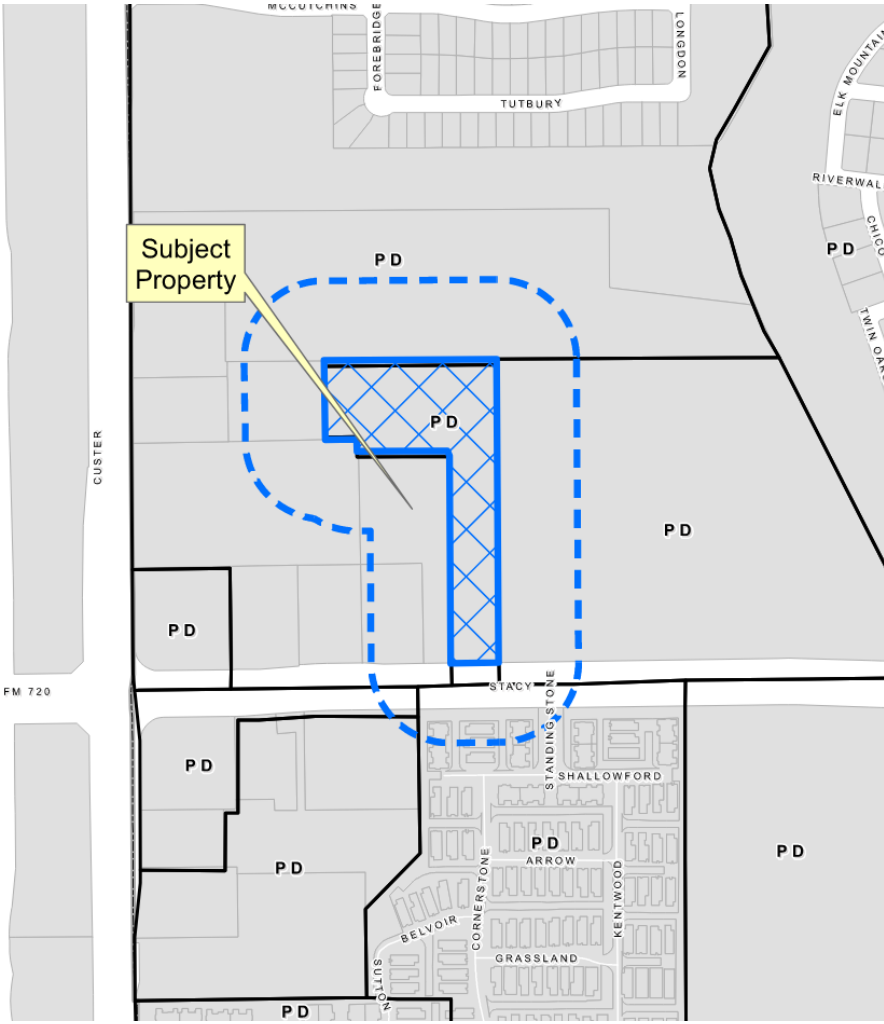


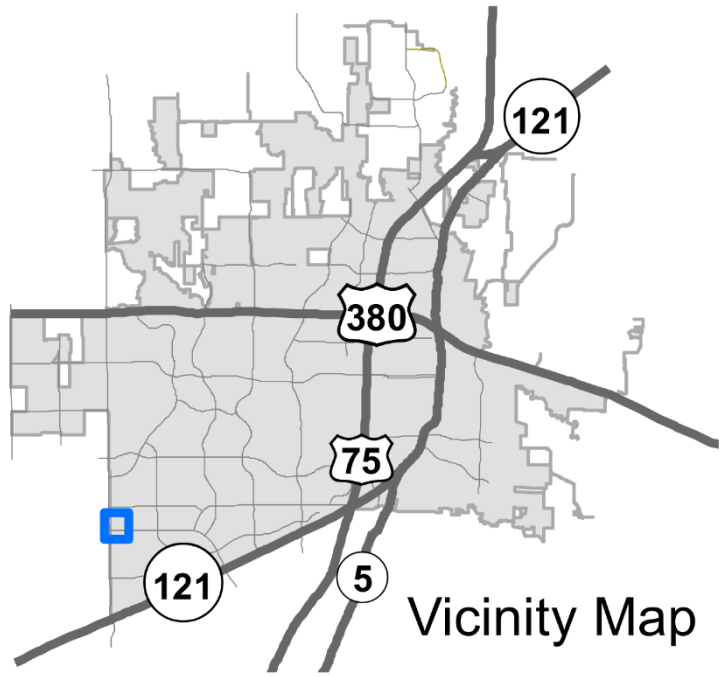
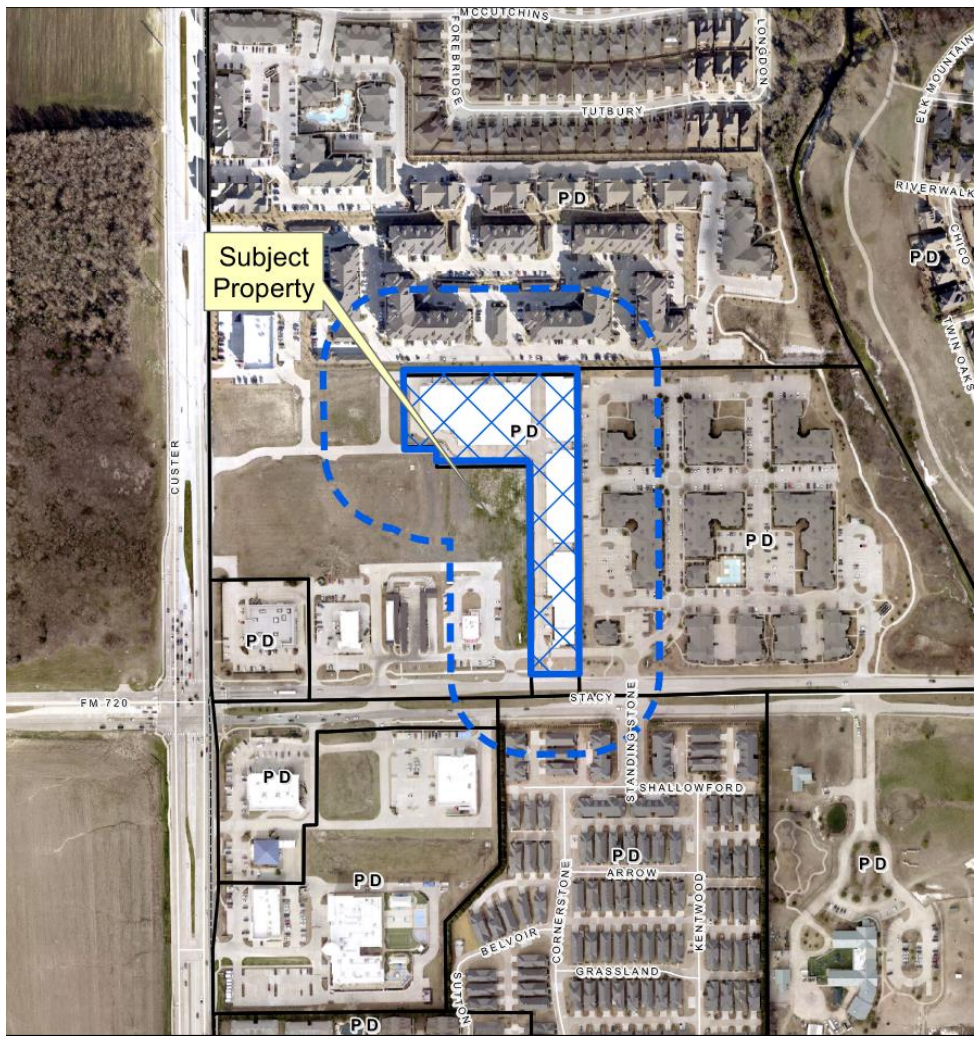
Craig Ranch NW Cell Tower SUP

23-0002SUP

Location Map

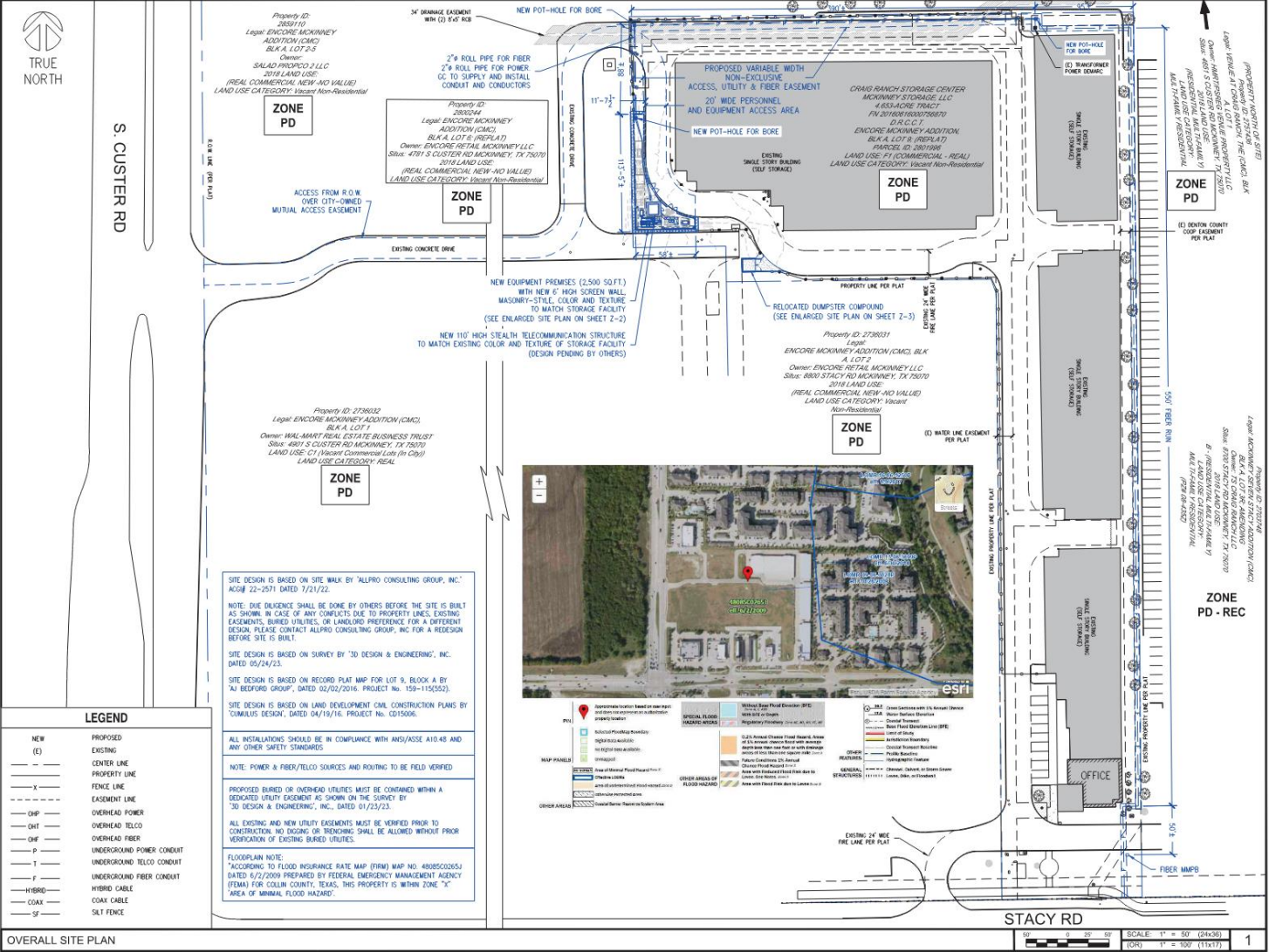


Aerial Exhibit



Vicinity Map

Proposed SUP Exhibit



5944 LUTHER LANE, SUITE 725
DALLAS, TX 75225

600 MOORE BOULE
IRVING, TX 75038

3650 DALLAS HWY
FRISCO, TX 75034

9221 Lyndon B Johnson Fwy
Suite 204, Dallas, TX 75243
Phone: 972-231-8933 Fax: 866-364-8375
www.allprocg.com
Registration No. 8242

ACQ NO: 23-1816, 23-1817
DRAWN BY: CG
CHECKED BY: SZ

REV	DATE	DESCRIPTION	BY
3	6/25/23	REVISED FOR ZONING REVIEW	CG
2	5/25/23	REVISED FOR ZONING REVIEW	CG
1	4/7/23	ZONING REVIEW	CG
0	2/13/23	ZONING REVIEW	CG

FOR ZONING REVIEW ONLY

NOT VALID WITHOUT P.E. STAMP & SIGNATURE

SITE INFORMATION

NEW 110'-0" STEALTH TELECOMMUNICATION STRUCTURE

SITE NAME: CRAIG RANCH NW

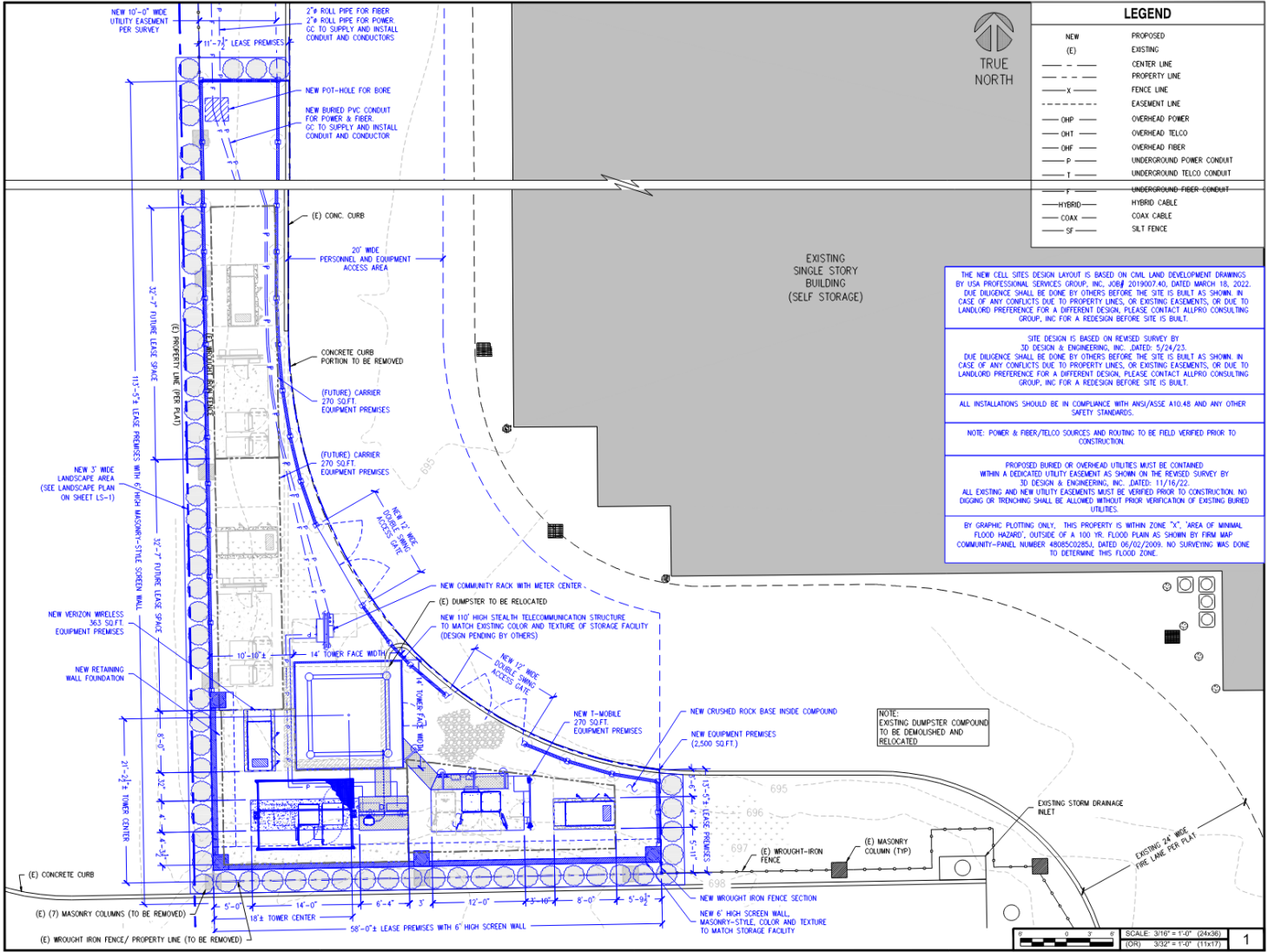
APN: 2801996
8770 W. STACY ROAD
MCKINNEY, TX
COLLIN COUNTY

LEGAL DESCRIPTION
MCKINNEY STORAGE, LLC
4.653-ACRE TRACT
FN 20160616000756870
D.R.C.C.T.
LOT 9, BLOCK A
CABINET, 2019 PAGE 582
M.R.C.C.T.
PARCEL ID: 2801996

SHEET TITLE:
SUP EXHIBIT

SHEET NUMBER:
SUP-1

Enlarged SUP Exhibit



ANTHEMNET
 5944 LUTHER LANE, SUITE 725
 DALLAS, TX 75225

verizon
 600 MODEN RIDGE
 IRVING, TX 75038

T Mobile
 3650 DALLAS FWY
 PRISCO, TX 75034

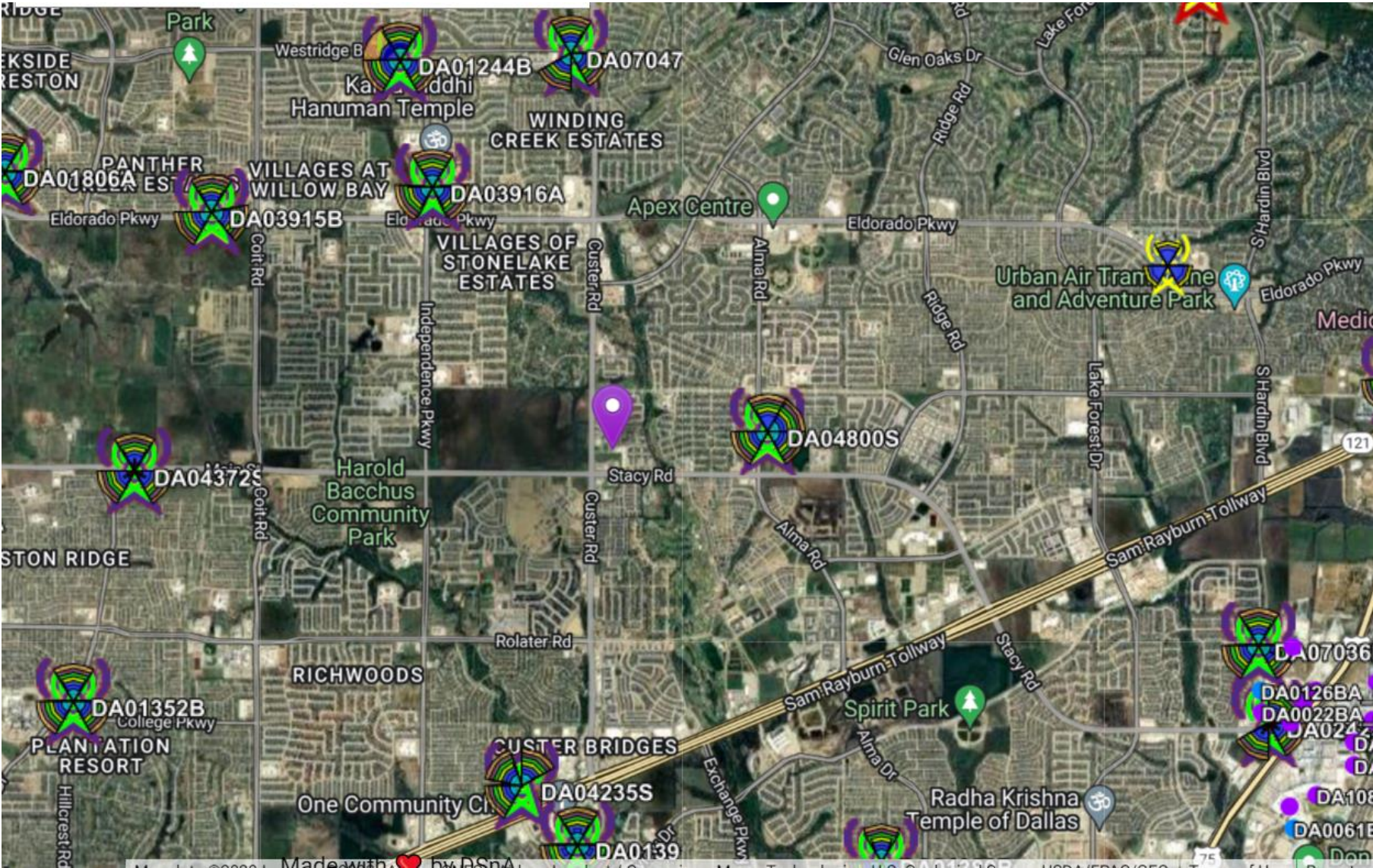
ALLPRO
 CONSULTING GROUP, INC.
 9221 Lyndon B. Johnson Fwy
 Suite 204, Dallas, TX 75241
 Phone: 972-251-8993 Fax: 966-364-8375
 www.allprocg.com
 Registration No. 8242

ACQ NO: 23-1816, 23-1817
 DRAWN BY: CO
 CHECKED BY: SZ

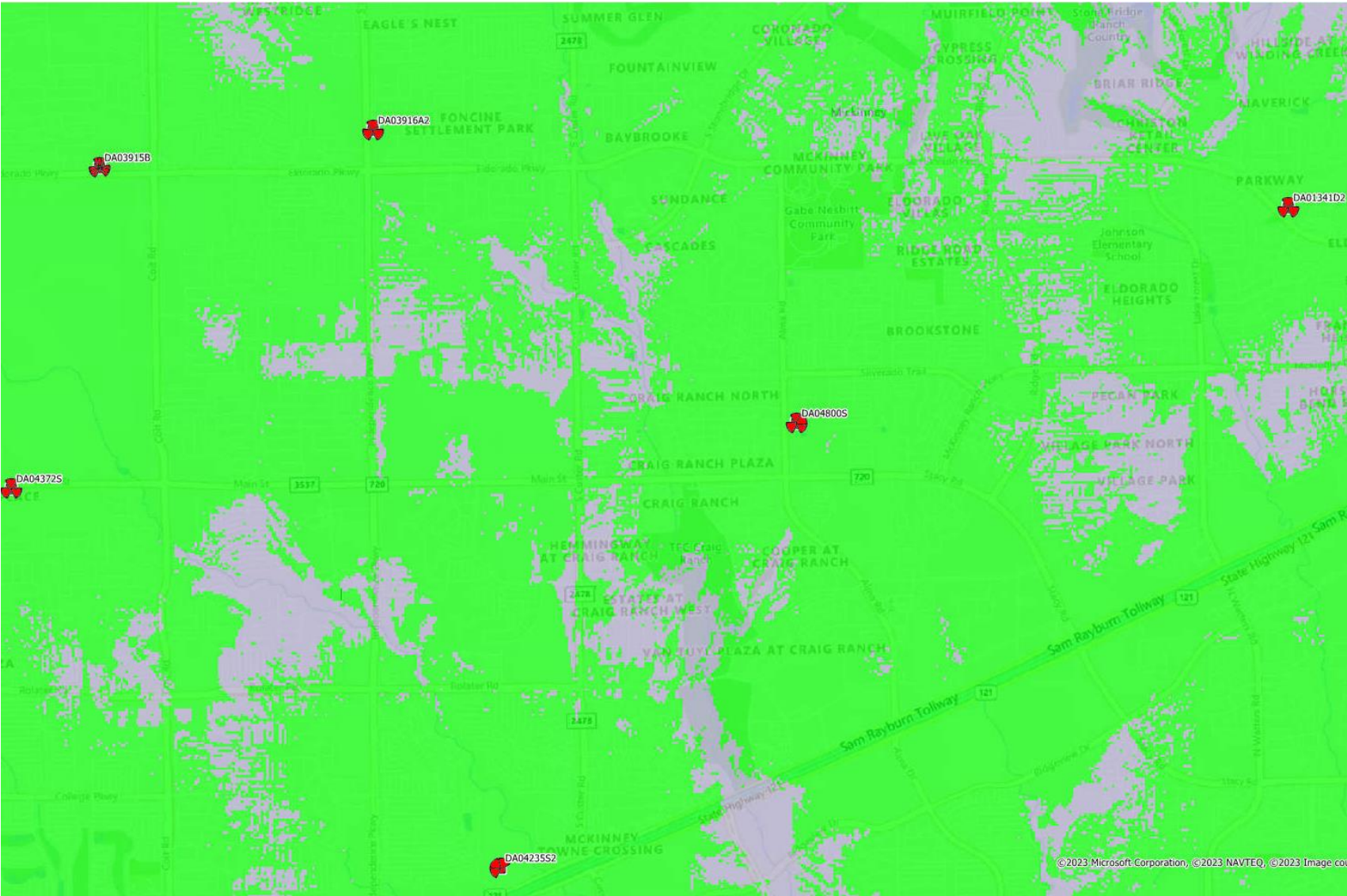
REV	DATE	DESCRIPTION	BY
3	6/23/23	REVISD FOR ZONING REVIEW	CO
2	5/23/23	REVISD FOR ZONING REVIEW	CO
1	4/7/23	ZONING REVIEW	CO
0	2/13/23	ZONING REVIEW	CO

REVISIONS

Propagation Maps



Propagation Maps



Propagation Maps

