



Historic Marker Application

618 W Louisiana
Street
Barnes-Largent House

Historic Preservation Advisory Board
Meeting
December 4, 2025
5:30 pm



Construction and Preservation Priority

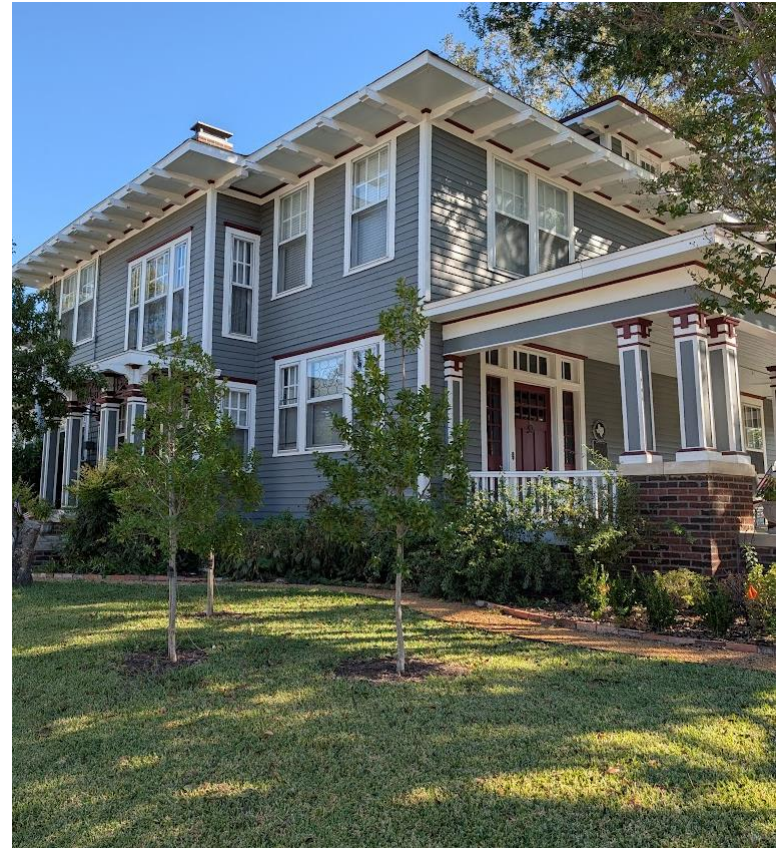
- Constructed: c. 1910
 - Pier and beam foundation with brick skirting
 - Hipped roof, expansive porches
 - 4 Square floor plan
- Priority: High
- Style: Prairie
- Markers: Recorded Texas Historic Landmark - 1984



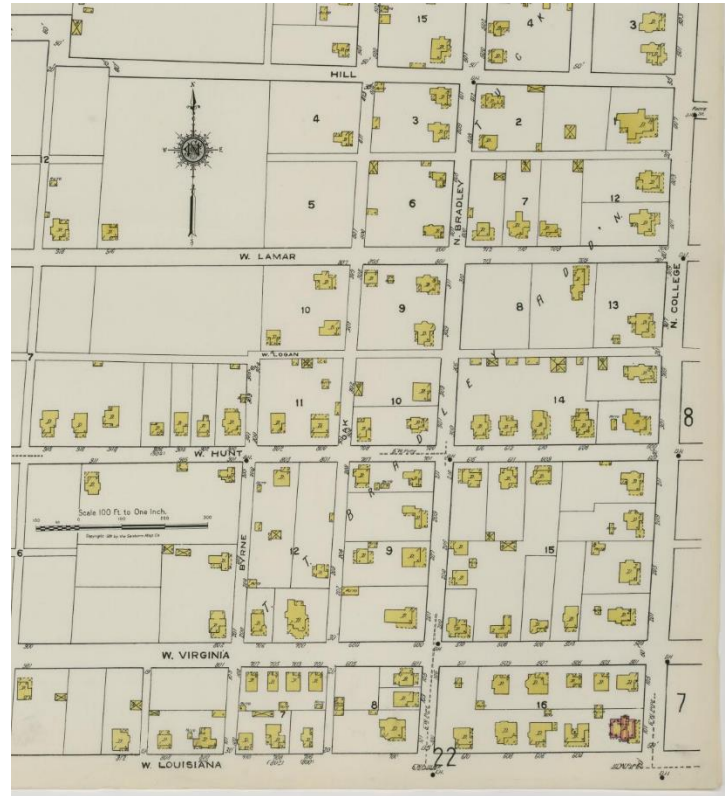
Above: 1985

Character Defining Features

- Exposed architectural corbels
- Large covered porches
- Original 6-over-1 windows
- Wood columns



Historic Images



Above: 1920 Sanborn Map
Left: Joe Barnes



*Above: 1985
Below: 2005*



Elevations - Past

Elevations - Current



*Left: Details at east elevation
Right: Back elevation*





Left: East elevation

Below: Back of carriage house



Elevations - Current