

Preliminary Plant Schedule (EXISTING - PHASE 1)

QUANTITY	CODE	COMMON/BOTANICAL NAME	SIZE/ROOT	SPACING O.C.	HEIGHT AT MATURITY
TREES - OVERSTORY					
15	BDC	BALD CYPRESS / TAXODIUM DISTICHUM	4" CAL./ 12" HT. B&B	AS SHOWN	H 60'-80' W 25'-30'
104	LIO	LIVE OAK / QUERCUS VIRGINIANA	4" CAL./ 12" HT. B&B	AS SHOWN	H 40'-80' W 60'-100'
16	SHO	SHUMARD OAK / QUERCUS SHUMARDII	4" CAL./ 12" HT. B&B	AS SHOWN	H 40'-60' W 50'-70'
16	CHO	CHINQUAPIN OAK / QUERCUS MUHLENBERGII	4" CAL./ 12" HT. B&B	AS SHOWN	H 50'-80' W 50'-70'
SHRUBS - EVERGREEN					
274	NSH	NELLIE R. STEVENS HOLLIE / ILEX X 'NELLIE R. STEVENS'	#5 CONT./ 36" HT. MIN.	3'-0" O.C.	H 15'-25' W 8'-12'

NOTE: QUANTITIES ON PLAN SUPERSEDE LIST QUANTITIES IN THE EVENT OF A DISCREPANCY.

Landscape Requirements -(ALL PLANTING IS EXISTING - PHASE 1)

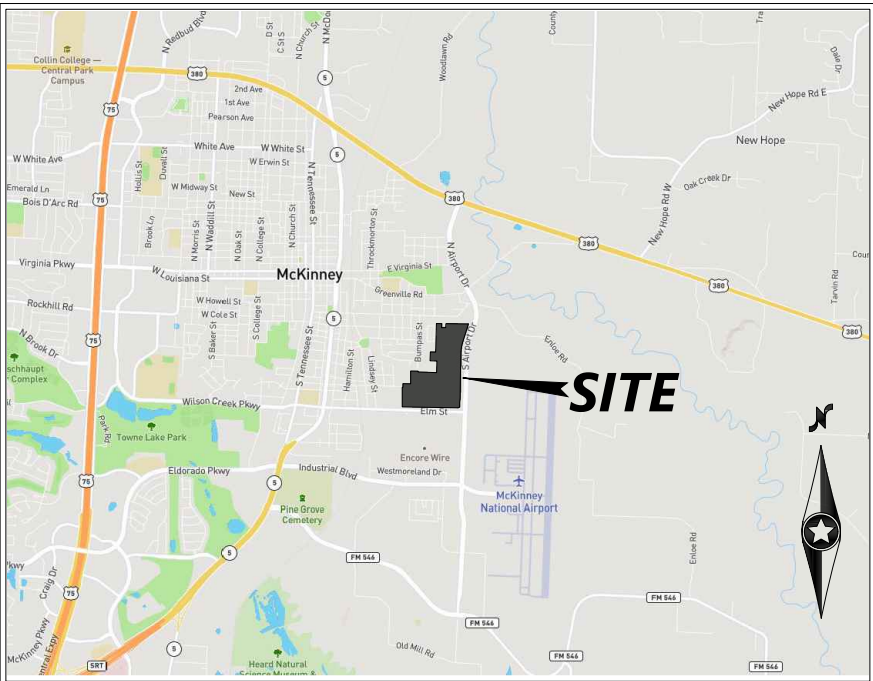
TOTAL TREES REQUIRED:	131 TREES
PERIMETER LANDSCAPE REQUIREMENTS:	
STREET TREES REQUIRED:	89 TREES
* ONE (1) LARGE TREE, 4 CAL. IN., PER FORTY (40) LINEAR FEET OF ROADWAY FRONTAGE SHALL BE PLANTED WITHIN LANDSCAPE BUFFER AREA.	
- PROPOSED ELM STREET FRONTAGE = 1,178 LF (LOT 1); 30 TREES REQUIRED; 35 TREES PROVIDED	
- AIRPORT DRIVE FRONTAGE = 2354 LF; 59 TREES REQUIRED; 59 TREES PROVIDED	
* 10' LANDSCAPE BUFFER REQUIRED ALONG MINOR THOROUGHFARES	
* 20' LANDSCAPE BUFFER REQUIRED ALONG MAJOR THOROUGHFARES	
* 30' LANDSCAPE BUFFER REQUIRED AT CORNER CLIP OF INTERSECTIONS	
INTERIOR LANDSCAPE PARKING REQUIREMENTS:	42 TREES
* ANY NON-RESIDENTIAL PARKING AREA THAT CONTAINS TWENTY (20) OR MORE PARKING SPACES SHALL PROVIDE THE FOLLOWING:	
- ONE (1) LARGE TREE, 4 CAL. IN., WITHIN 65' OF EVERY PARKING SPACE.	
- ONE (1) LARGE TREE, 4 CAL. IN., PLANTED IN AN INTERIOR PARKING ISLAND PER EVERY 10 PARKING SPACES.	
- (364 PARKING SPACES: 38 TREES REQUIRED; 48 PROVIDED)	

Landscape Provisions

TOTAL LANDSCAPING PROVIDED:	151 TREES
* CANOPY TREES	151 TREES
* EVERGREEN SHRUBS	274 SHRUBS

Landscape Area Requirements

10% OF TOTAL SITE AREA TO BE LANDSCAPED	(TOTAL SITE AREA: 48.4 AC)
* LANDSCAPE AREA REQUIRED:	4.8 AC / 10%
* LANDSCAPE AREA PROPOSED:	10.3 AC / 23%
15% OF TOTAL STREET YARD TO BE LANDSCAPED	(TOTAL STREET YARD AREA = 2.0 AC)
* LANDSCAPE AREA REQUIRED:	0.3 AC / 15%
* LANDSCAPE AREA PROPOSED:	1.4 AC / 70%



VICINITY MAP
NOT TO SCALE

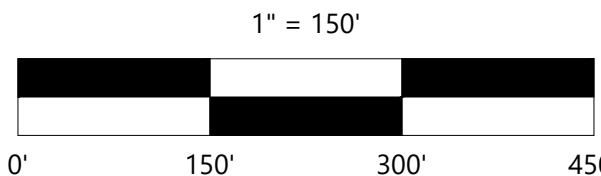
Plant Legend (EXISTING - PHASE 1)

- CANOPY TREES
- EVERGREEN SHRUBS
- TURF - 419 TIFF BERMUDA SOD
- BARK MULCH

IRRIGATION NOTE:
* PERMANENT IRRIGATION SYSTEM SHALL BE INSTALLED PER CITY REQUIREMENTS. PERMANENT IRRIGATION TO BE INSTALLED IN LANDSCAPE AREAS AS PHASES COMPLETED. TEMPORARY IRRIGATION MAY BE NECESSARY IN SOME AREAS TO INSURE PLANT SURVIVAL UNTIL ALL CONSTRUCTION COMPLETE WITHIN A PHASE AND PERMANENT IRRIGATION INSTALLED. PERMANENT IRRIGATION TO BE AUTOMATIC AND UNDERGROUND SYSTEM WITH RAIN AND FREEZE SENSORS AND SHALL BE DESIGNED AND INSTALLED BY QUALIFIED AND LICENSED PROFESSIONALS.

CAUTION !!!
EXISTING UTILITIES

EXISTING UTILITIES AND UNDERGROUND FACILITIES INDICATED ON THESE PLANS HAVE BEEN LOCATED FROM REFERENCE INFORMATION. IT SHALL BE THE RESPONSIBILITY OF THE CONTRACTOR TO VERIFY BOTH HORIZONTALLY AND VERTICALLY THE LOCATION OF ALL EXISTING UTILITIES AND UNDERGROUND FACILITIES PRIOR TO CONSTRUCTION. TO TAKE NECESSARY PRECAUTIONS IN ORDER TO PROTECT ALL FACILITIES ENCOUNTERED. THE CONTRACTOR SHALL PRESERVE AND PROTECT ALL EXISTING UTILITIES FROM DAMAGE DURING CONSTRUCTION.



FOR CITY SITE PLAN RE-SUBMITTAL ONLY

DESIGNED:
CHECKED:
DRAWN:
HORIZONTAL SCALE:
VERTICAL SCALE:

INITIAL ISSUE:	
REVISIONS:	

PREPARED FOR:
ENCORE WIRE CORPORATION
1329 MILLWOOD ROAD
MCKINNEY, TEXAS 75069



ENCORE WIRE SERVICE CENTER
MCKINNEY, TEXAS

Westwood

Phone (214) 473-4640 2740 Dallas Parkway, Suite 280
Toll Free (888) 937-5150 Plano, TX 75093
westwoodps.com
Westwood Professional Services, Inc.
TSPS FIRM REGISTRATION NO. F-11758
TSPS FIRM REGISTRATION NO. 10074301

OVERALL LANDSCAPE PLAN

SHEET NUMBER:

LP.01

PROJECT NUMBER: 0023657.05

DATE: 10-09-2024