

Parks & Recreation

2025/2026 \$8M Grant Request

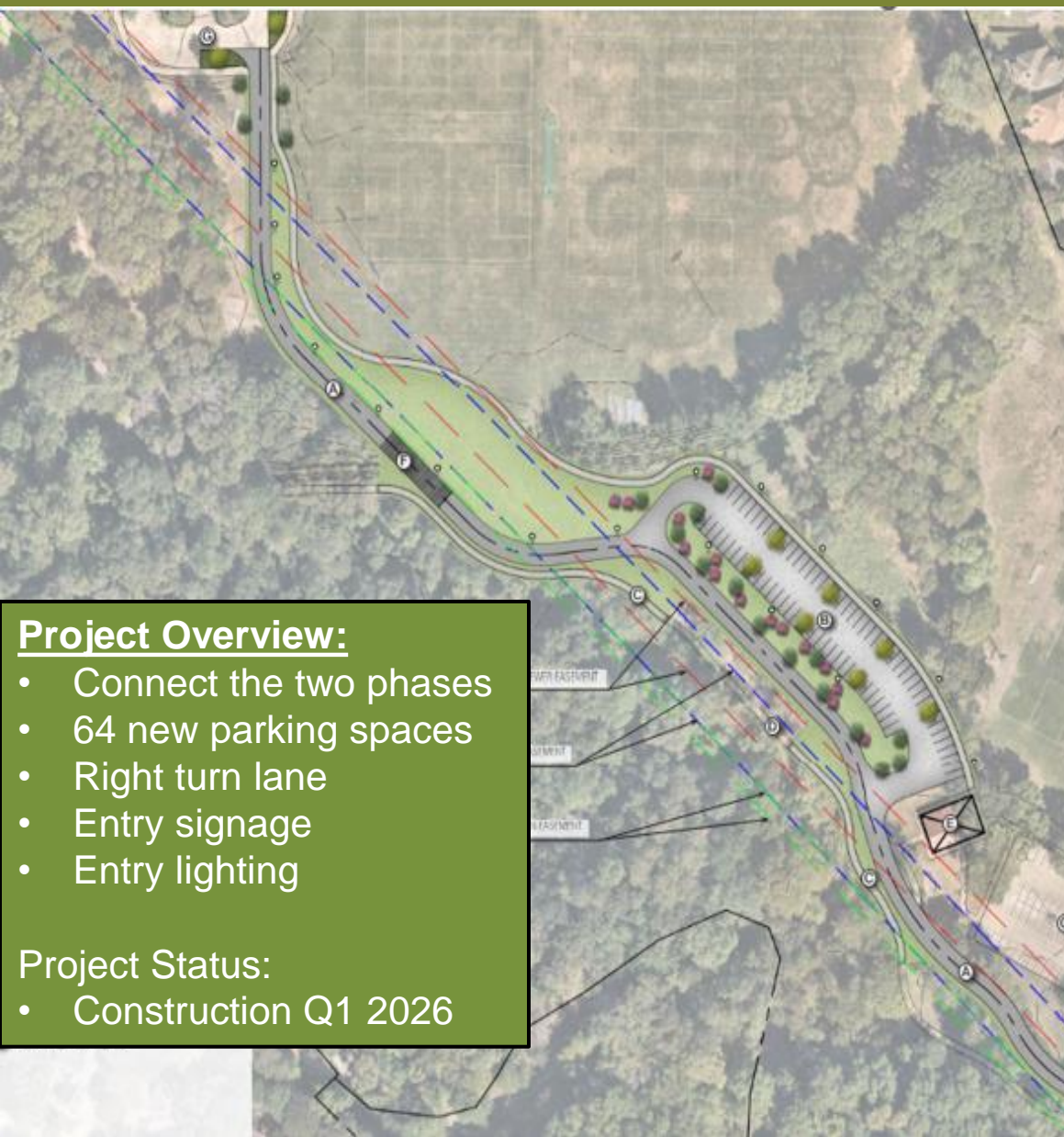
McKinney Community Development Corporation

July 24, 2025

Jenny Baker, Parks Planning & Development Manager

FY 25/26 MCDC GRANT REQUEST

Al Ruschhaupt Road	\$2,000,000
Old Settler's Park	\$2,800,000
Erwin Park	\$3,000,000
Trail Plan Amendment and Wayfinding	\$ 100,000
<u>Parks Accessibility</u>	<u>\$ 100,000</u>
Total	\$8,000,000



Project Budget: \$5,300,000

CDC Request: \$2,000,000

Project Overview:

- Connect the two phases
- 64 new parking spaces
- Right turn lane
- Entry signage
- Entry lighting

Project Status:

- Construction Q1 2026

AL RUSCHHAUPT PARK CONNECTOR ROAD

Project Budget: \$13,300,000

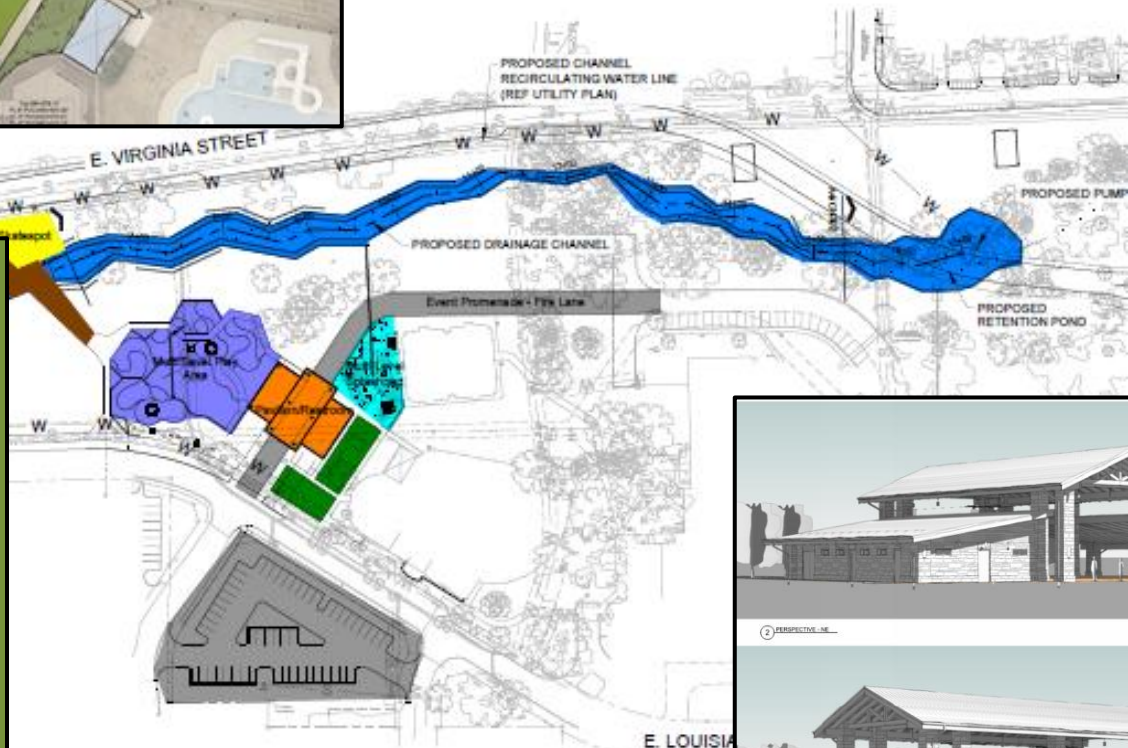
CDC Request: \$2,800,000

Project Overview:

- Expanded playground
- Multi level splash pad
- Large pavilion/restrooms
- Additional parking
- Stream enhancements
- Pickleball courts
- Skatespot

Project Status:

- 50% CD's - August
- Construction Q1 2026



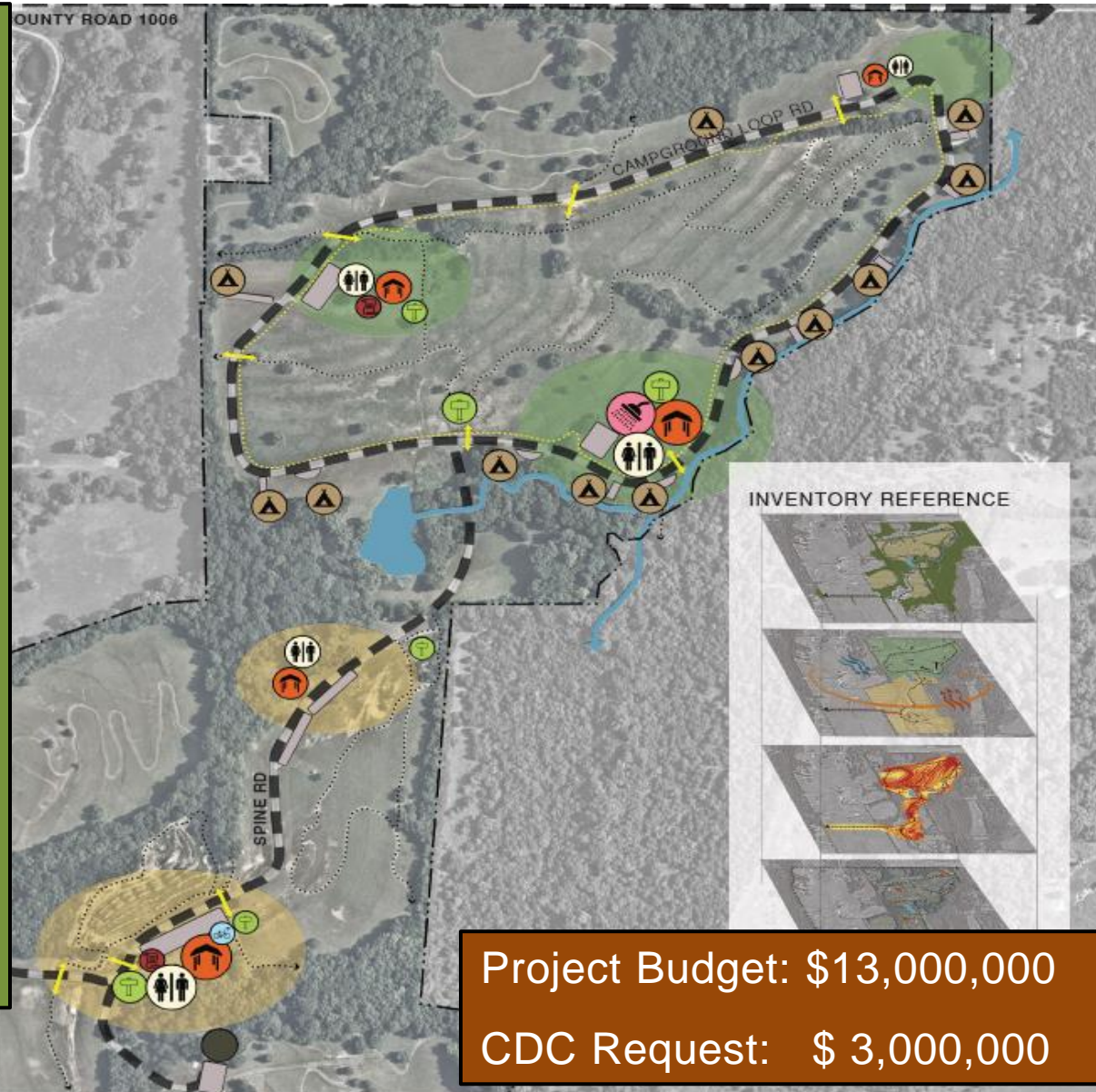
OLD SETTLER'S PARK

Project Overview:

- Entire park road resurfacing
- Parking areas converted to concrete paving
- ADA improvements
- Concrete trail around northern loop
- New restrooms, shower facilities and pavilions
- Septic conversion to sanitary sewer
- New site furnishings
- Water and electrical service to all camp sites
- Formalized entrance, signage
- Overlook
- Small maintenance barn

Project Status:

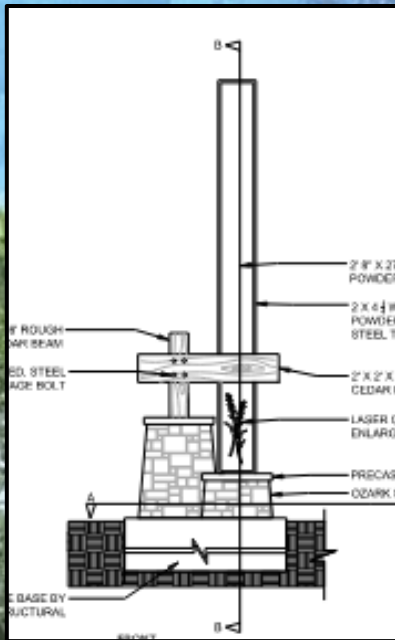
- 90% CD's
- Construction January 2026



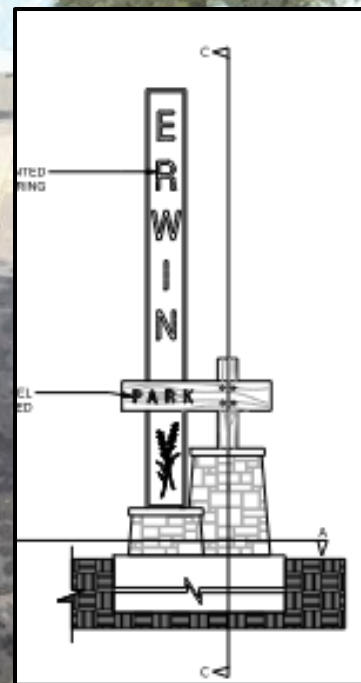
Project Budget: \$13,000,000

CDC Request: \$ 3,000,000

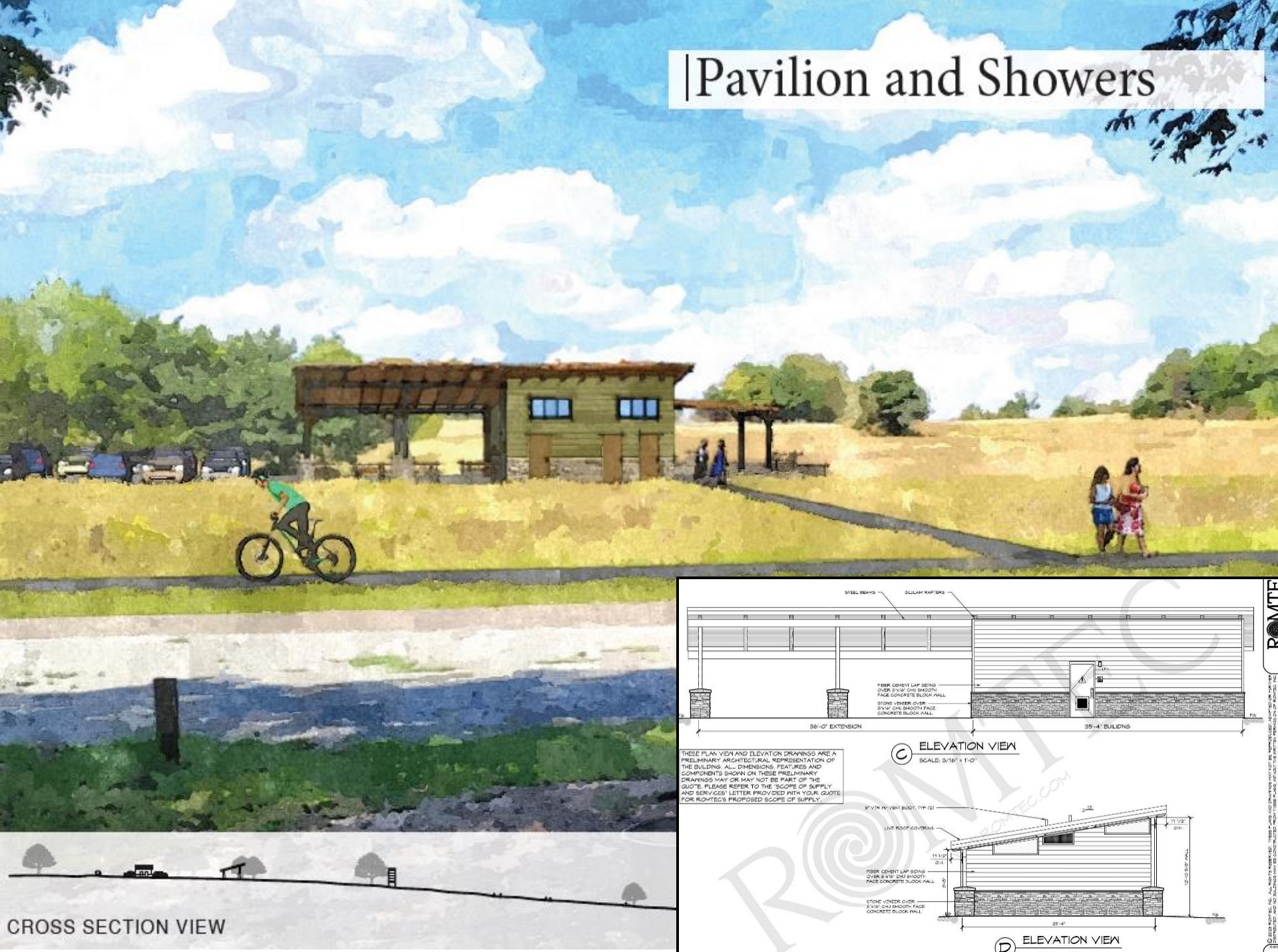
ERWIN PARK IMPROVEMENTS



|Main Entry Monument

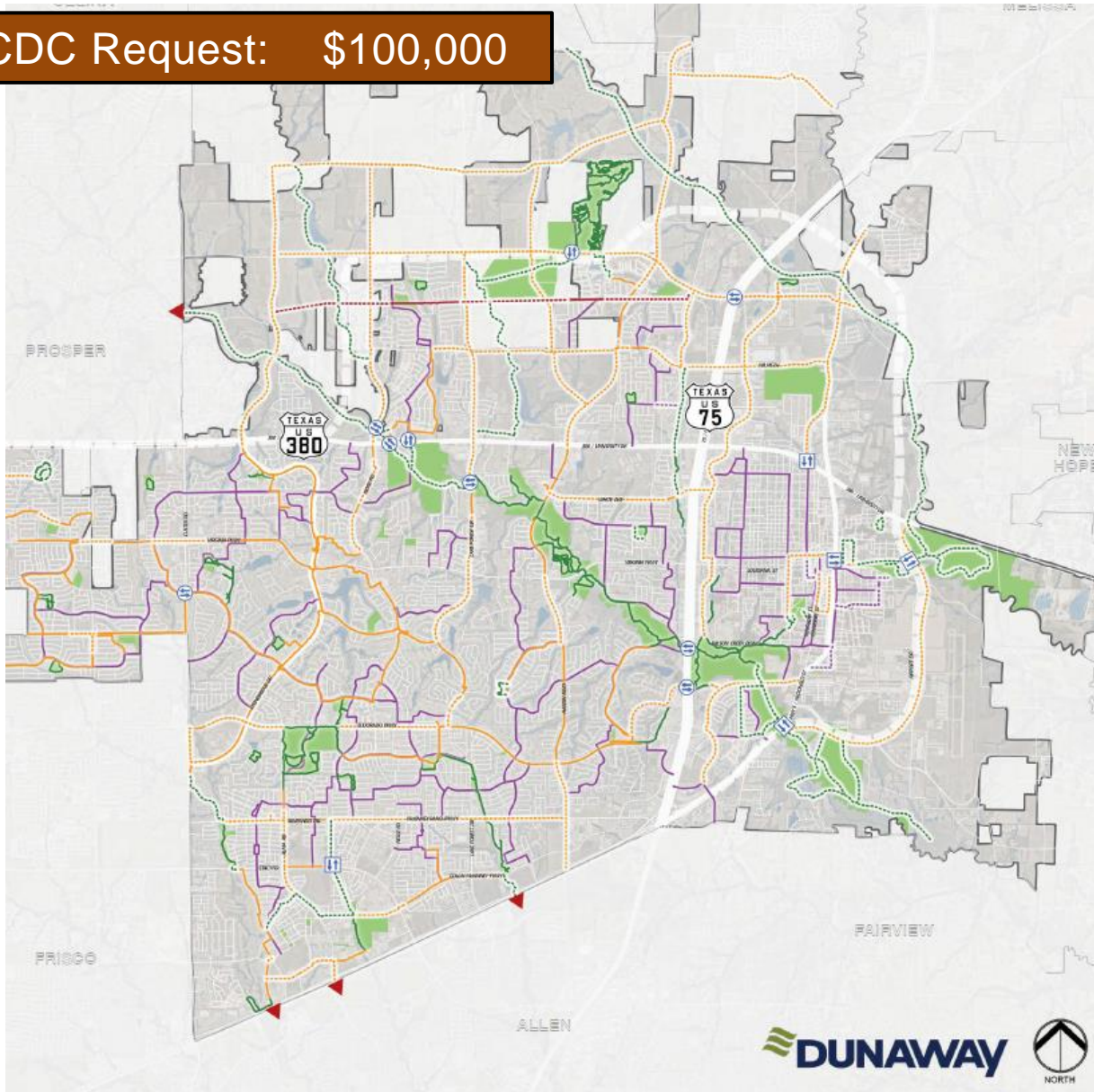


|Pavilion and Showers





CDC Request: \$100,000



TRAIL NETWORK PLAN

Trails (Existing & Proposed)

-  Parkway Trail
-  Bicycle Boulevard
-  Greenbelt & Park Trail
-  Easement Trail

Project Overview:

- Amendments needed to reflect growth patterns and new developments
- Identify new Catalyst Projects
- Trail Wayfinding study is needed



TRAILS PLAN AMENDMENT

CDC Request:
\$100,000

- Trip Hazards
- Trail improvements
- Pedestrian paving improvements
- Playground surfacing
- ADA ramps
- Signage

FY 25/26 MCDC GRANT REQUEST

Al Ruschhaupt Road	\$2,000,000
Old Settler's Park	\$2,800,000
Erwin Park	\$3,000,000
Trail Plan Amendment and Wayfinding	\$ 100,000
<u>Parks Accessibility</u>	<u>\$ 100,000</u>
 Total	 \$8,000,000