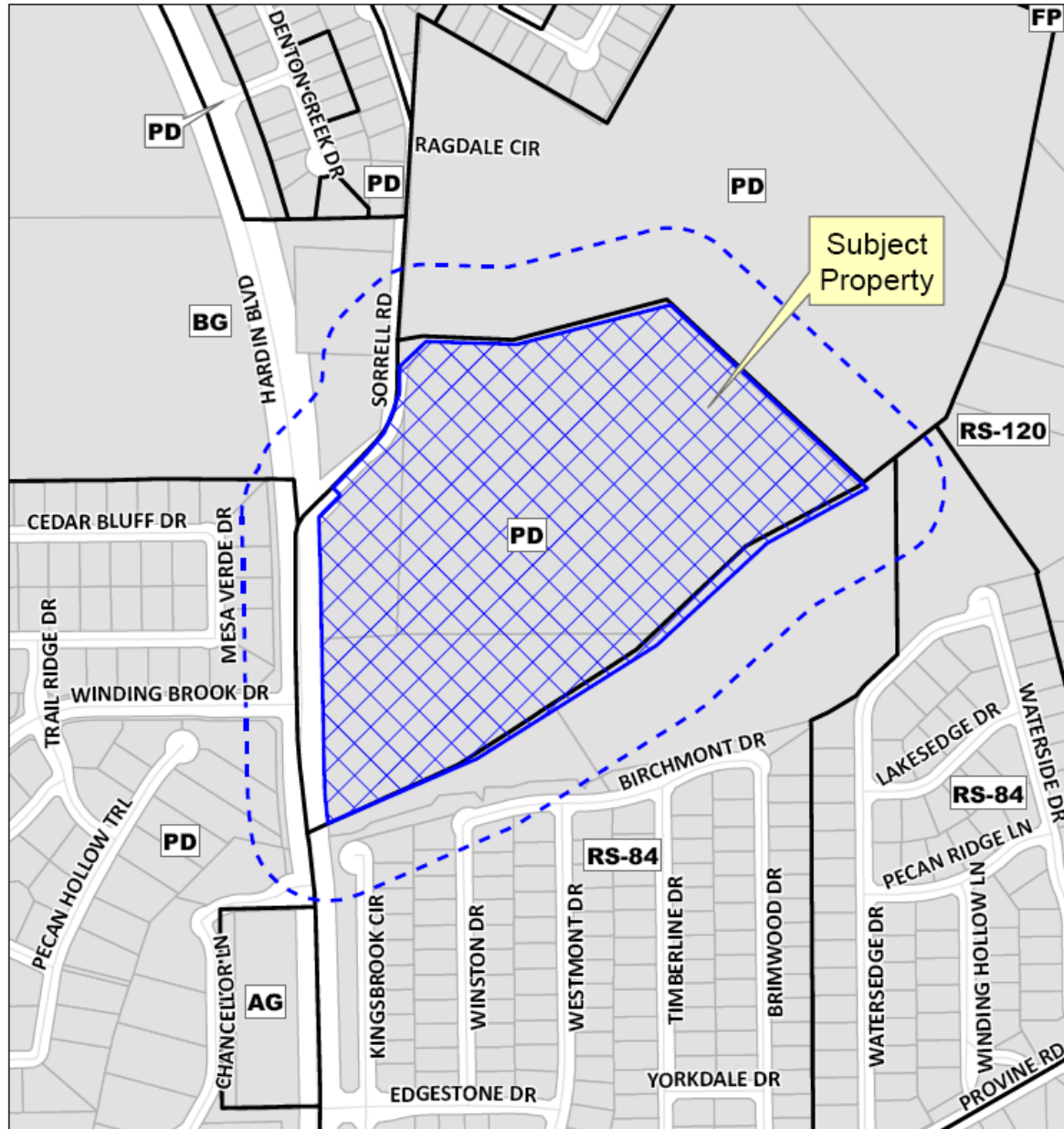


Case No. 12-125Z

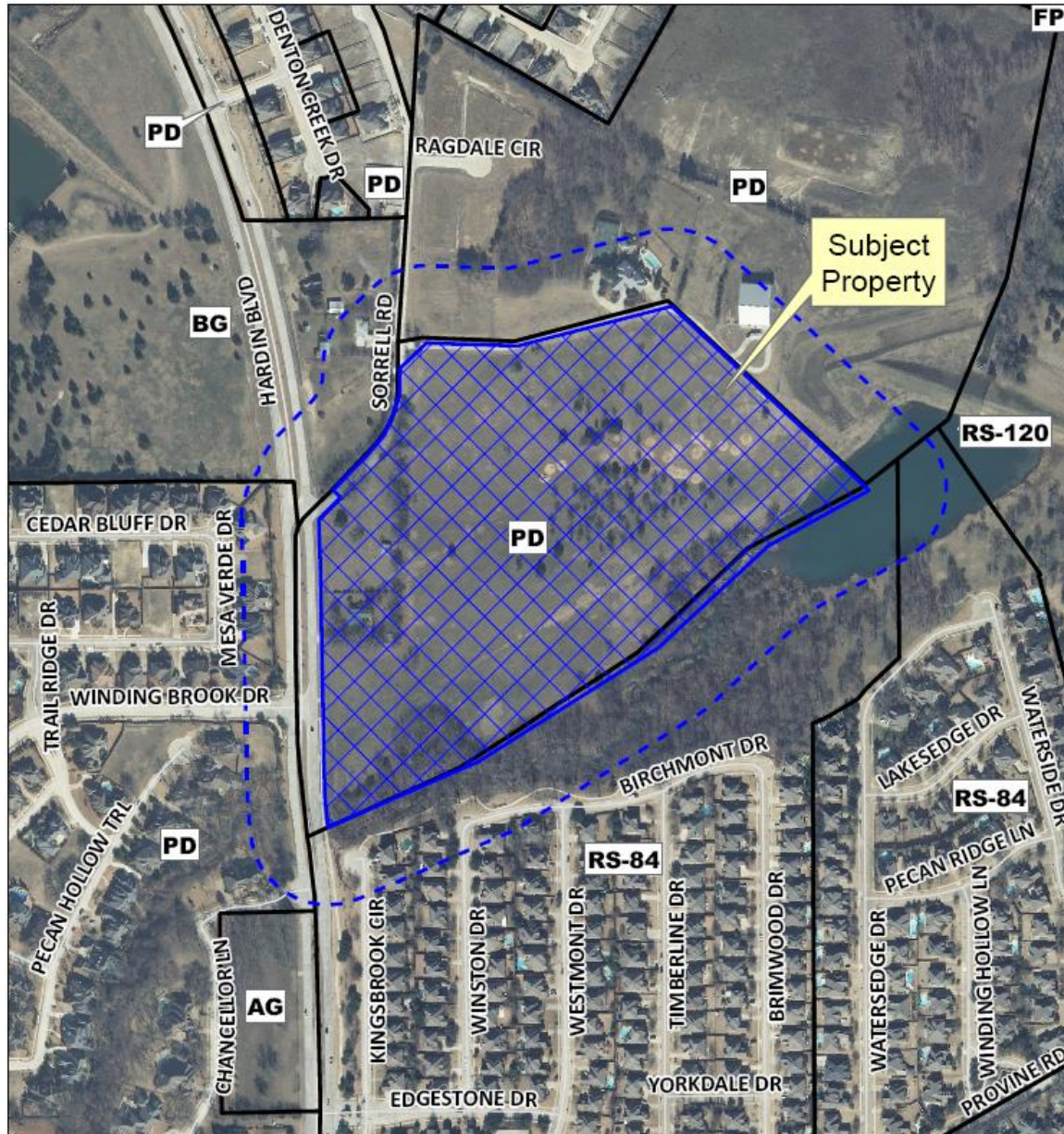
Westlake



Location Map



Aerial Exhibit



Illustrative Plan



COMMUNITY DATA

SITE: 31.6 AC +/-
 SOIL CONSERVATION EASEMENT: 9.3 AC +/-
 NET DEVELOPABLE: 22.3 AC +/-

96 LOTS (50' X 110' TYP)

ILLUSTRATIVE PLAN

WESTLAKE MCKINNEY, TEXAS

ENGINEERING, PLANNING AND LANDSCAPE ARCHITECTURE FOR REAL ESTATE DEVELOPMENT

16301 GUORUM DR.
 SUITE 200 B
 ADDISON, TX 75001



0 50 100 200 300

Staff Recommendation

Staff recommends approval of the proposed rezoning request with the special ordinance provision listed in the staff report.