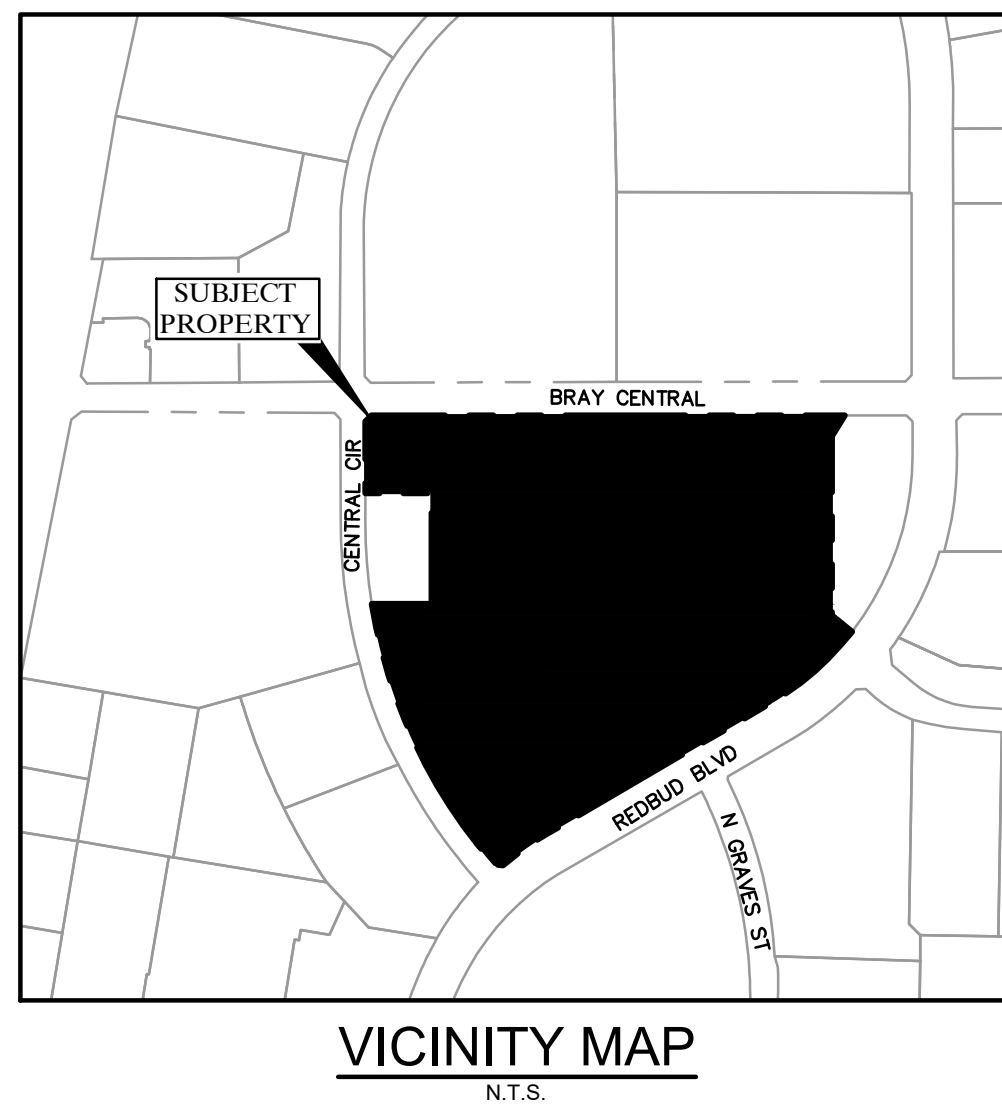
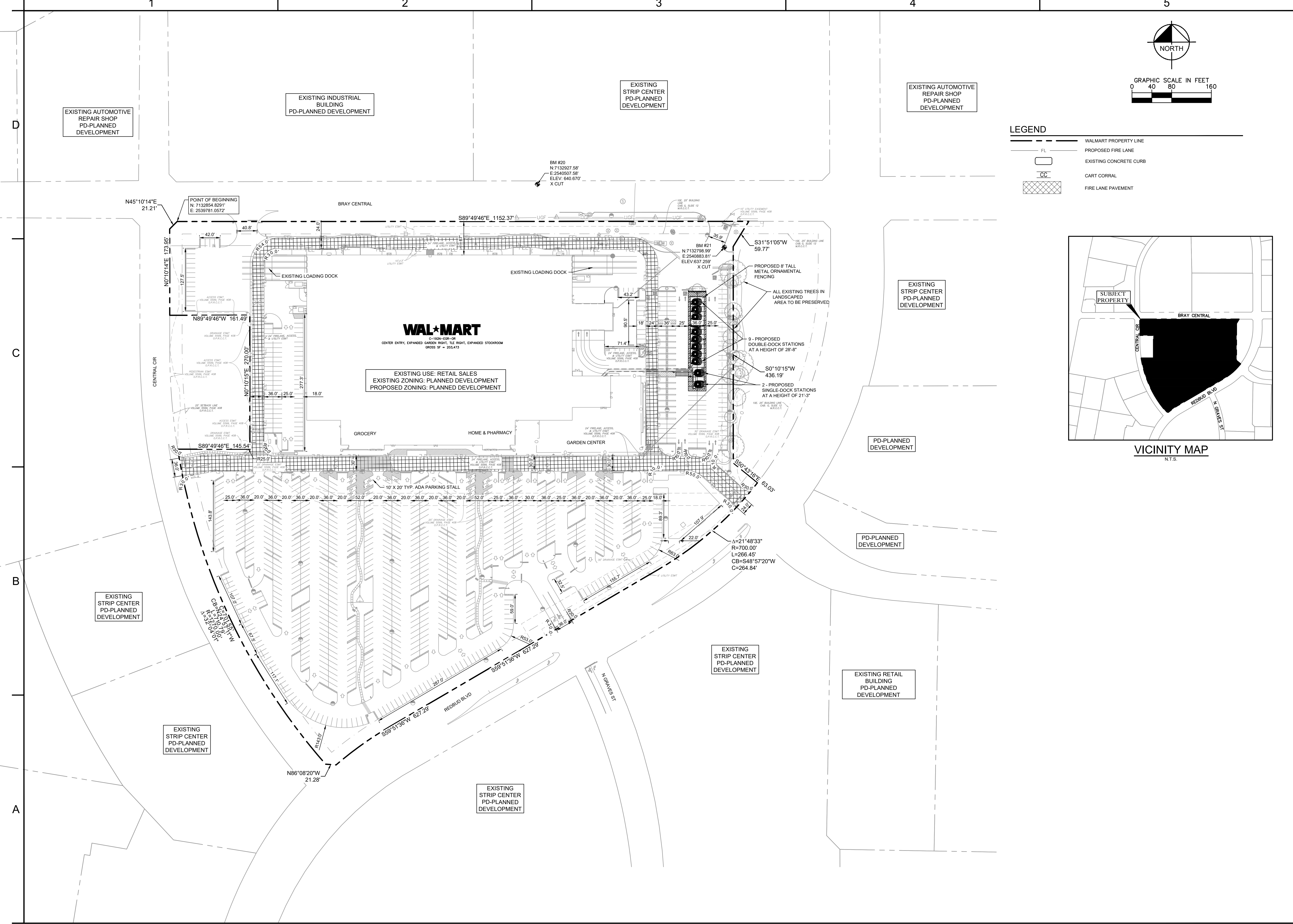


Prepared by: The design of this document without written authorization and adaptation by Kimley-Horn and Associates, Inc. shall be without liability to Kimley-Horn and Associates, Inc.



ADD. 1	NO.	REVISIONS	DATE
1			01/24/2025

Kimley-Horn
 © 2024 KIMLEY-HORN AND ASSOCIATES, INC.
 10101 REDBUD BLVD, SUITE 400, SAN ANTONIO, TX 78216
 WWW.KIMLEY-HORN.COM | TFB# FIRM NO. 928

KHA PROJECT: 063563245
 DATE: 1/20/25
 SCALE: AS SHOWN
 DESIGNED BY: FT
 DRAWN BY: FT
 CHECKED BY: AM

ZONING EXHIBIT

STORE# 206-1007
 PREPARED FOR
WALMART

SHEET NUMBER
EX-1