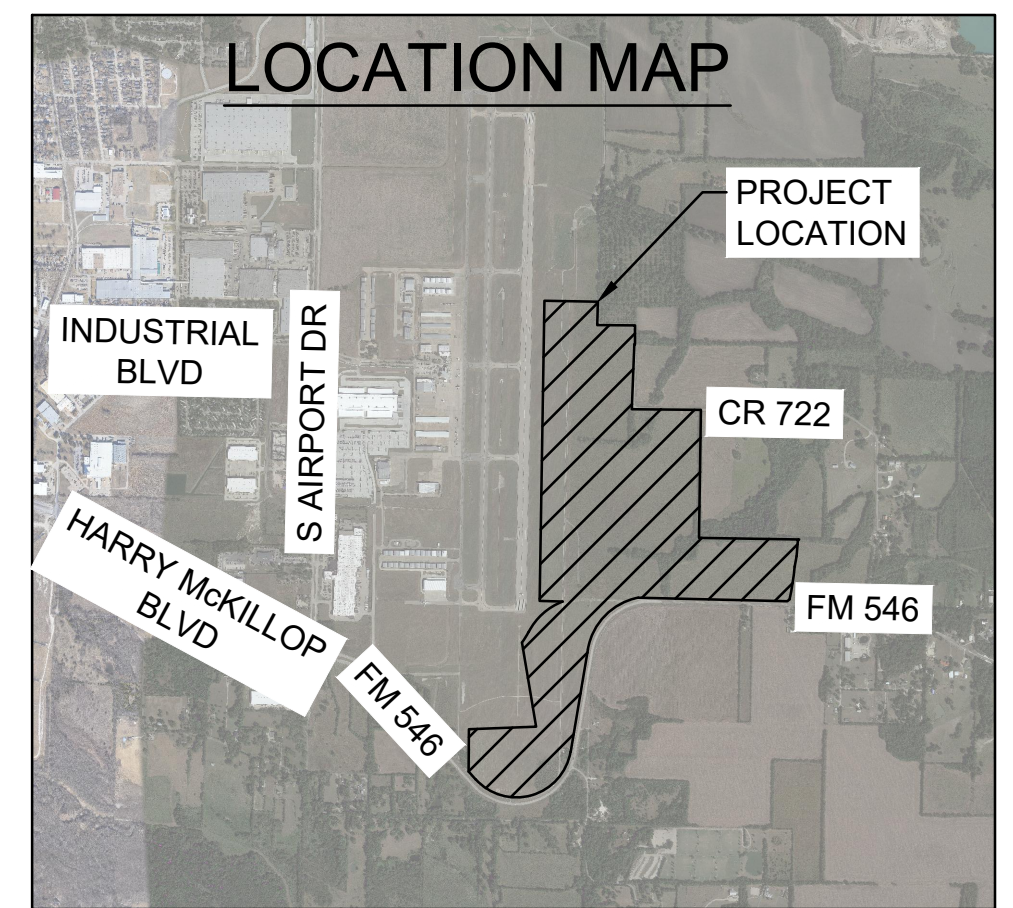


LEGEND	
	PROPERTY LINE
	AP - PROPOSED AIRPORT ZONE (263.83 ACRES)



© 2024 GARVER, L.L.C.
THIS DOCUMENT, ALONG WITH THE IDEAS AND DESIGNS CONVEYED HEREIN, SHALL BE CONSIDERED INSTRUMENTS OF PROFESSIONAL SERVICE AND ARE PROPERTY OF GARVER, L.L.C. ANY USE, REPRODUCTION, OR DISTRIBUTION OF THIS DOCUMENT, ALONG WITH THE IDEAS AND DESIGN CONTAINED HEREIN, IS PROHIBITED UNLESS AUTHORIZED IN WRITING BY GARVER, L.L.C. OR EXPLICITLY ALLOWED IN THE GOVERNING PROFESSIONAL SERVICES AGREEMENT FOR THIS WORK.

PRELIMINARY DESIGN

THIS DOCUMENT IS RELEASED FOR THE PURPOSE OF INTERIM REVIEW UNDER THE AUTHORITY OF RIKKI D. WEAVER, P.E., NO. 193974, ON 10/19/2024. IT IS NOT TO BE USED FOR CONSTRUCTION, OR PERMIT PURPOSES.

REV.	DATE	DESCRIPTION	BY

McKINNEY NATIONAL AIRPORT
McKINNEY, TX

EASTSIDE TERMINAL
INFRASTRUCTURE DESIGN

JOB NO.: 23A11174
DATE: OCT. 2024
DESIGNED BY:
DRAWN BY:

BAR IS ONE INCH ON ORIGINAL DRAWING
IF NOT ONE INCH ON THIS SHEET, ADJUST SCALES ACCORDINGLY.

DRAWING NUMBER
SHEET NUMBER