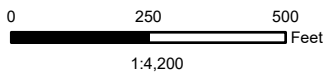


Document Path: Y:\\_Engineering\EngGIS\Projects\04\_LocationMaps\02\_CO2511\LocationMap\_CO2511.aprx

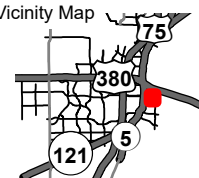


DISCLAIMER: This map and information contained in it were developed exclusively for use by the City of McKinney. Any use or reliance on this map by anyone else is at that party's risk and without liability to the City of McKinney, its officials or employees for any discrepancies, errors, or variances which may exist.

## Location Map CO2511

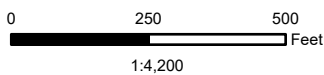
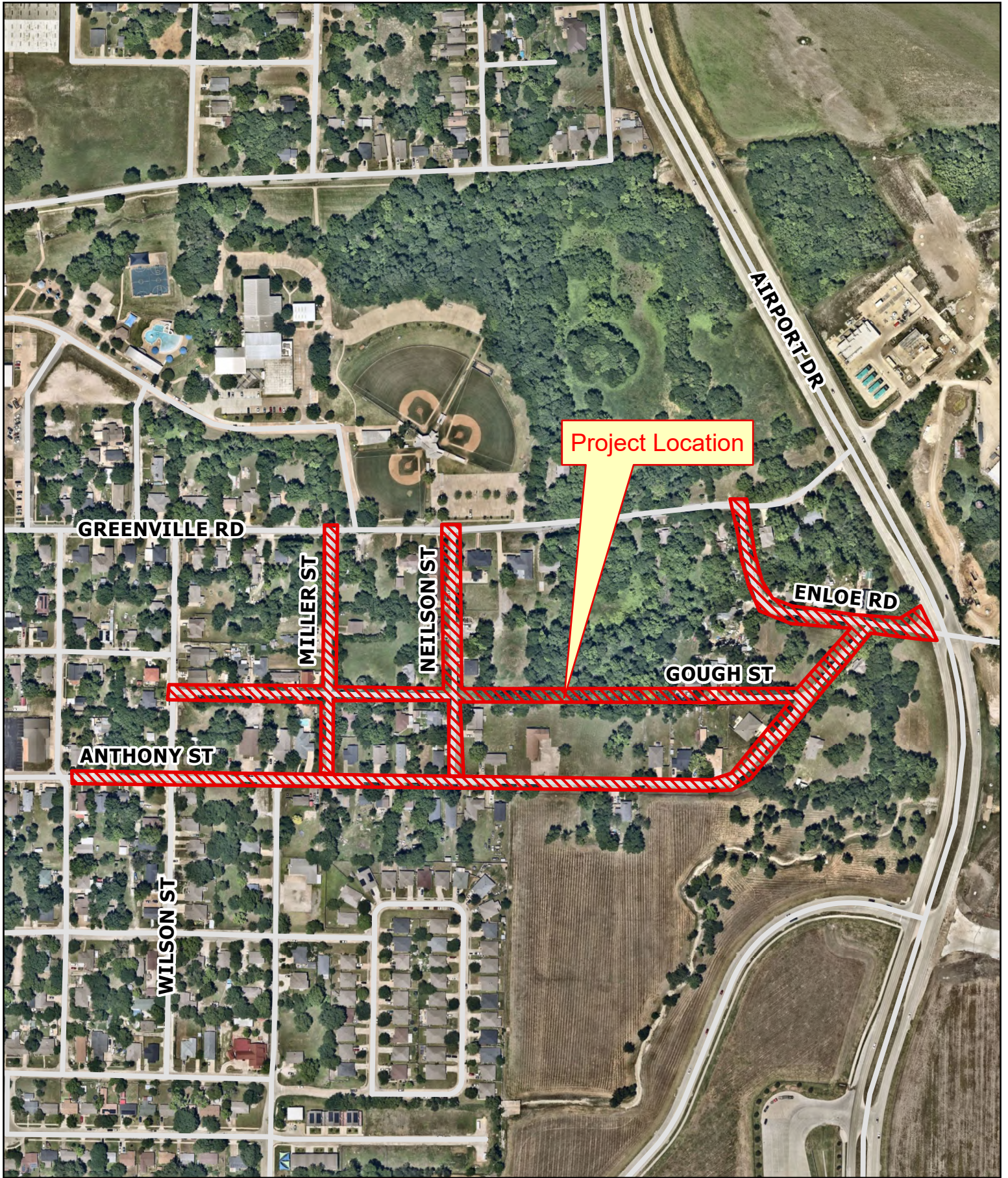
Residential Infrastructure Improvements  
(Anthony, Gough, Neilson, Miller & Enloe)

Vicinity Map



Source: Engineering GIS  
Date: 6/23/2026

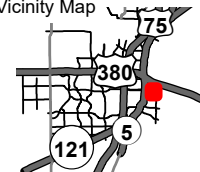
Document Path: \1\_Engineering\EngGIS\Projects\04\_LocationMaps\02\_CO2511\LocationMap\_CO2511.aprx



### Location Map CO2511

Residential Infrastructure Improvements  
(Anthony, Gough, Neilson, Miller & Enloe)

Vicinity Map



Source: Engineering GIS  
Date: 6/23/2026

DISCLAIMER: This map and information contained in it were developed exclusively for use by the City of McKinney. Any use or reliance on this map by anyone else is at that party's risk and without liability to the City of McKinney, its officials or employees for any discrepancies, errors, or variances which may exist.