

CIP	PROJECT DECRPTIONS	FUNDING	CDC Year Approval	URRENT STATU	DESIGN			BID NO.	BIDS OPEN	CONSTRUCTION		NTP	Estimated Completion	COMMENTS	PM
					PB	CC	PDM			PB	CC				
2546	APEX Elevator		X	Design		5/6/25	X						Dec-26	Design almost complete	PJ
2445	Ash Woods Playgound/Pavilion Improvements		X	Construction									Dec-25	old equipment has been removed -- new equipment installs week of 11114	RD
2248	Bonnie Wenk wall resurfacing		X	Not Begun									Dec-26	consider using MISD painting contract - add tactile elements to the wall -- BS needs 3-4 new light poles	
2346	Bloomdale trail connect to Reed Parkland		X	Not Begun									Dec-25		
1906	MSC Renovation Phase 2		X	Construction	5/11/23	6/6/23		25-02CSP	1/23/25	2/13/25	2/18/25	5/20/25	Apr-25	Construction on going	JY
2447	Falcon Creek Sport Court Improvements		X	Planning									Dec-25	November delivery for benches; contract in docusign for approval	RD
2450	Furr Elementary School Park		X	Not Begun									TBD		
1806	Gabe softball tables		X	Planning									TBD	working on PO	
1806	Gabe wayfinding signage		X	On hold									Jun-25	JB wants to hold off until bids for softball and practice area come in - looking at around 50K	
2448	Grady Concession and park Improvements		X	Pre-Bidding	4/11/24	4/16/24	6/5/25	26-11CSP					Dec-25	100% set by end of sept; bid docs being drafted	AB
2348	Gray Branch Trail and Parking improvements		X	Planning									Dec-25	Houser looking into land acquisition --planning for design proposal	JB
2442	Inspiration Park Playground and pavilion Improvments		X	Planning									Dec-25	12/6 old equipment comes down and new installed week of 12/8	MK
2112	Median - Virginia and Bloomdale		X	Not Begun									TBD		
2344	Regional Sports Facility - Brinkman		X	Planning									TBD	Draft RFQ	JB
2443	Tom Allen Playground and Pavilion replacements		X	Not Begun									TBD		
2507	Cottonwood Creek Trail design		X	Not Begun									Dec-25	Commissioner's Court approved funding -- planning for design proposal	
	Cottonwood Creek Trail land acquisition/easement		X	Planning									TBD		
2505	Rowlett Creek Park Improvements/Stacy 6 Cities Trail FY25	\$794,539	X	Not Begun									Dec-25	Commissioners Court considering funding in October	
	Silverado Lanes 3 and 4 + trail - Engineering CIP ST2013		X	Design									TBD	Construction to begin fall 2026 -- planning for design proposal	
2347	Gabe tennis facility		X	Planning									Jan-26	Received updated quote to switch the court lighting to MUSCO LED 10.14.25 -- no court resurfacing	
2506	Ledbetter Park Improvements FY25		X	Not Begun									Dec-25		
26007	Whisenant Playground replacement		X	Not Begun									Dec-25		
2608	Towne Lake Redevelopment	\$2,500,000	X	Planning	12/11/25	1/6/26							TBD	working on design proposal	
2627	Zone D and E Medians FY254 - Bloomdale	\$218,922	X	Not Begun									TBD		
2509	Zone Medians FY 25 Hardin 380 to Wilmeth	\$398,205	X	Not Begun									TBD		
	Projects with CDC Funding														
4325	ADA Improvements	\$302,111	19;22;23; 25	Not Begun	X	X	X	X	X	X	X	X	Ongoing	Much of this budget will be utilized with Grady improvements to address the multiple ADA issues	
2345	Al Ruschhaupt Road Connection	\$5,416,110	25	Design	8/10/23	10/2/23	8/15/24	Q1 2026					Dec-25	5.2 mil OPC - site plan approved -- look at playground/splash pad redo once bids come in; KH preparing development set/final flood study	RD
2609	Trails Plan Amendment & Wayfinding	\$116,670	25	Not Begun			X						Dec-25		
9143	Erwin Improvements	\$10,406,994	20;24; 25	Pre-Bidding		6/18/23	8/15/24	25-61CSP	Nov				Dec-25	100% CD's have been stamped for approval; dam breach analysis may coincide with park plans and done as a separate project if needed; building	DC
	Ottaway tract annexation and zoning prior to development	X	X	Not Begun									TBD	Planning going to initiate zoning and annexation - TBD and they will take the lead	
1806	Gabe 4 plex softball fields	\$19,451,418	17	Bidding	1/14/21	2/2/21		25-13CSP	9/18/25	10/9/25	10/21/25		Dec-26	Notice to proceed to be issued once SWPPP is approved by engineering	JB
1806	Gabe monuments/practice area/APEX fence and shade	\$1,200,000	24	Construction	X	X	X	25-145CSP	4/10/25	5/8/25	5/20/25	10/1/25	Mar-26	Site grading in progress	JS
2109	Greens neighborhood park	\$431,732	20;21	Construction	12/9/21	12/14/21			4/18/24	5/9/24	5/21/24	9/8/24	Oct-25	parking lot formed; concrete pour by 9/5 -- end of October completion	AB
2041	Old Settler's Park Improvements	\$13,568,307	18	Design	9/14/23	10/2/23	8/28/26		Q4 2025				Dec-25	road plans have advanced to allow for further plan development of the park. Review 50% CDs. Site Plan in review.	JY
	OS-Virginia Rd Improvement - Engineering CIP ST2307	X	X	Design									TBD	Virginia plans are at 30%	
4397	RCTL building renovation	\$6,364,560	19;20;21	Construction		2/7/23		23-10RFQ					Oct-25	Final punch walk 10/13. Ribbon cutting 12/3 @ 4:00. Use remaining \$ to order fancy furniture	JY
4393	Towne Lake Trail Light Walk	\$15,679,773	20;21;22;23	Construction	10/13/22	X		24-23CSP	11/21/24	12/12/24	12/17/24	3/24/25	Oct-25	One set of lights left to be installed that were back-ordered. Ribbon Cutting 12/3 @5:00	JS
	Towne Lake Dog Park and Play Zone		20;21;22;23	Pre-Bidding	10/13/22	11/1/22		26-12CSP	Nov				Dec-26	preparing 100% CD set - - site plan approval ?	DC
1831	Wattley Park renovation	\$2,458,522	19;20;21;22	On hold									TBD	we have been given the go ahead to issue for construction	JY
	Wattley Remediation - Engineering CIP DR2118	X	X	Design		8/6/24							TBD		
1827	Wilson Creek trail to Greens (PH2)	\$3,634,680		Design	11/9/23	12/5/23							Jul-26	Add'l svcs has been executed for arch study -- old cart paths will be pulled up and remain natural surface	MK
	PROJECTS - Completed 2025														
2456	Aviator Playground and Pavilion replacements													COMPLETE - open March 2025	DC
2112	Median - Virginia at 75			Construction						9/12/24	9/17/24			Complete March 2025	MS
1831	EA Randles Park Renovation			Closeout	12/9/21	12/14/21			7/27/23	8/10/23	9/5/23	11/13/23		COMPLETED MARCH 2025	
1827	Wilson Creek trail to Greens (PH1)			Closeout	12/9/21	12/14/21			4/24/24	5/9/24	5/21/24	7/8/24		MAY 2025 COMPLETION - Engineering CO 10/13/25.	
2444	Winniford Park fence; pavilion; sport court			COMPLETE	X	X	X	X	X	X	X	6/3/25		fence and pavilion done-court completed June 2025	DC

Update on Parks Capital Improvement Projects

City Council Work Session - November 18, 2025

Jenny Baker
Parks, Planning and Development Manager

Overview

21 Active Projects + 7 projects to begin

Recent/Near Completion - 3

Recreation Center at Towne Lake
Towne Lake Trail light walk
Greens neighborhood park

Bidding/Construction – 6

Gabe Nesbitt practice field and signage
Gabe Nesbitt 4 plex softball fields
McKinney Sports Complex Phase 2
Ash Woods playground replacement
Inspiration Park playground replacement
Wattley Park

Design/Planning - 12

APEX new elevator
Al Ruschhaupt Road connection
Grady Littlejohn Sports Complex
Erwin Park
Bob Tomes Dog Park at Towne Lake
Wilson Creek Trail Phase 2
Old Settler's Park
Regional Sports Park
Rowlett Creek Park and Trail
Cottonwood Creek Trail
Gray Branch Trail
Towne Lake Park Renovation

Investing in almost \$200 million dollars in parks and trail improvements

Recent / Near Completion



Project Overview:

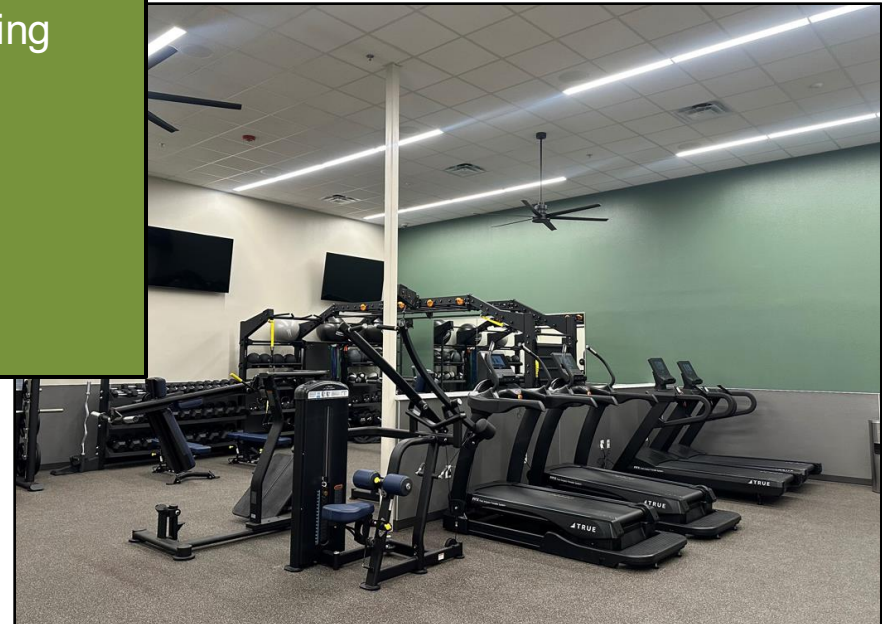
- Renovated restrooms
- ADA improvements
- New front desk and conference rooms
- New fitness room
- Additional parking

Project Status:

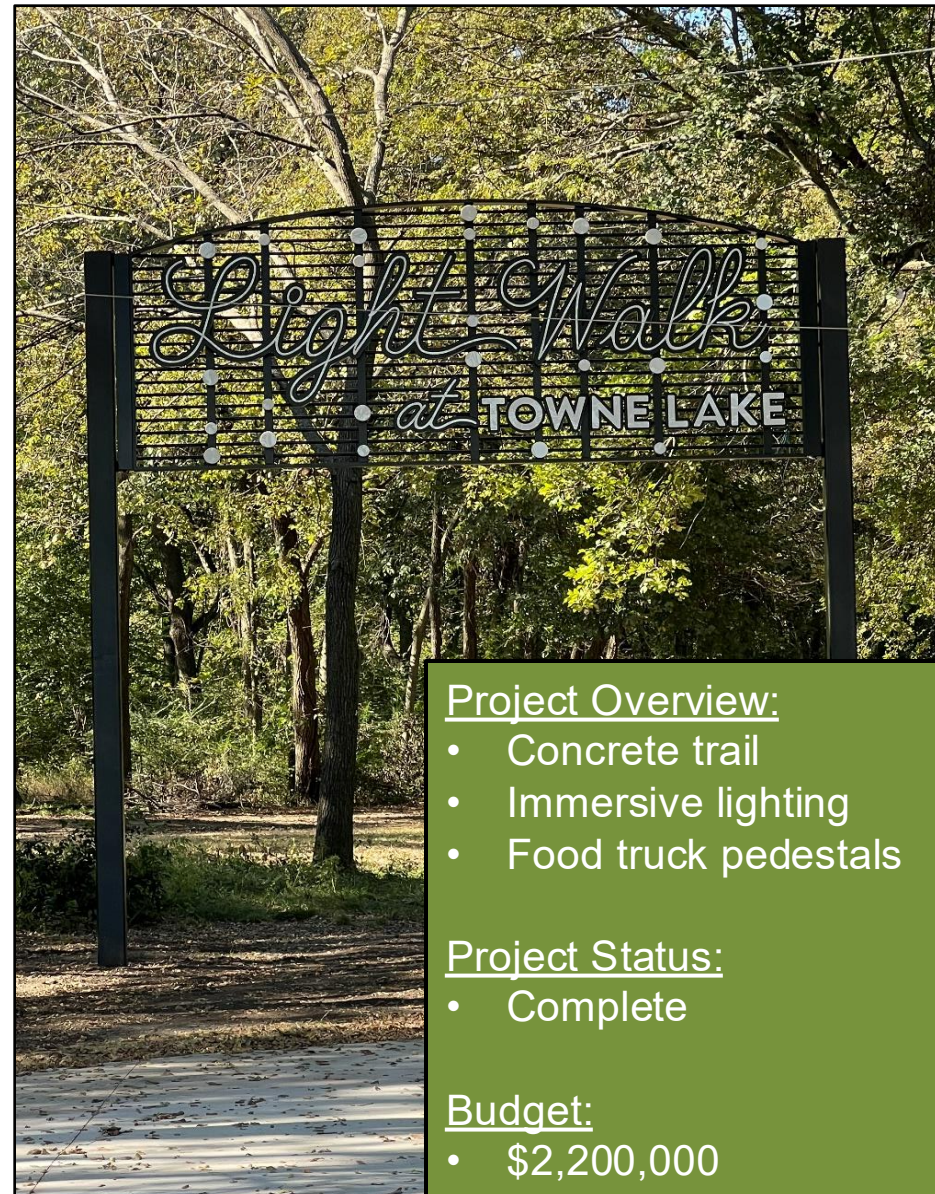
- Complete

Budget:

- \$6,500,000



RECREATION CENTER AT TOWNE LAKE



Project Overview:

- Concrete trail
- Immersive lighting
- Food truck pedestals

Project Status:

- Complete

Budget:

- \$2,200,000

TOWNE LAKE LIGHT WALK



Project Overview:

- Playground, pavilion
- Pond overlook
- Trails
- parking

Project Status:

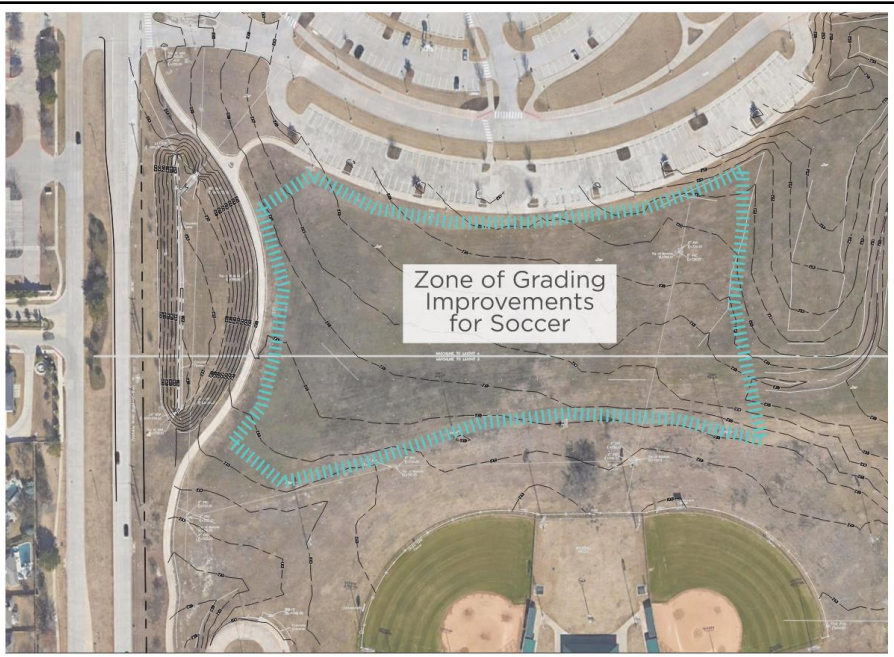
- Construction complete Q4 2025

Budget:

- \$2,400,000

GREENS NEIGHBORHOOD PARK

Bidding / Construction



Project Overview:

- Monument signage
- Grading improvements for practice
- New fencing at APEX

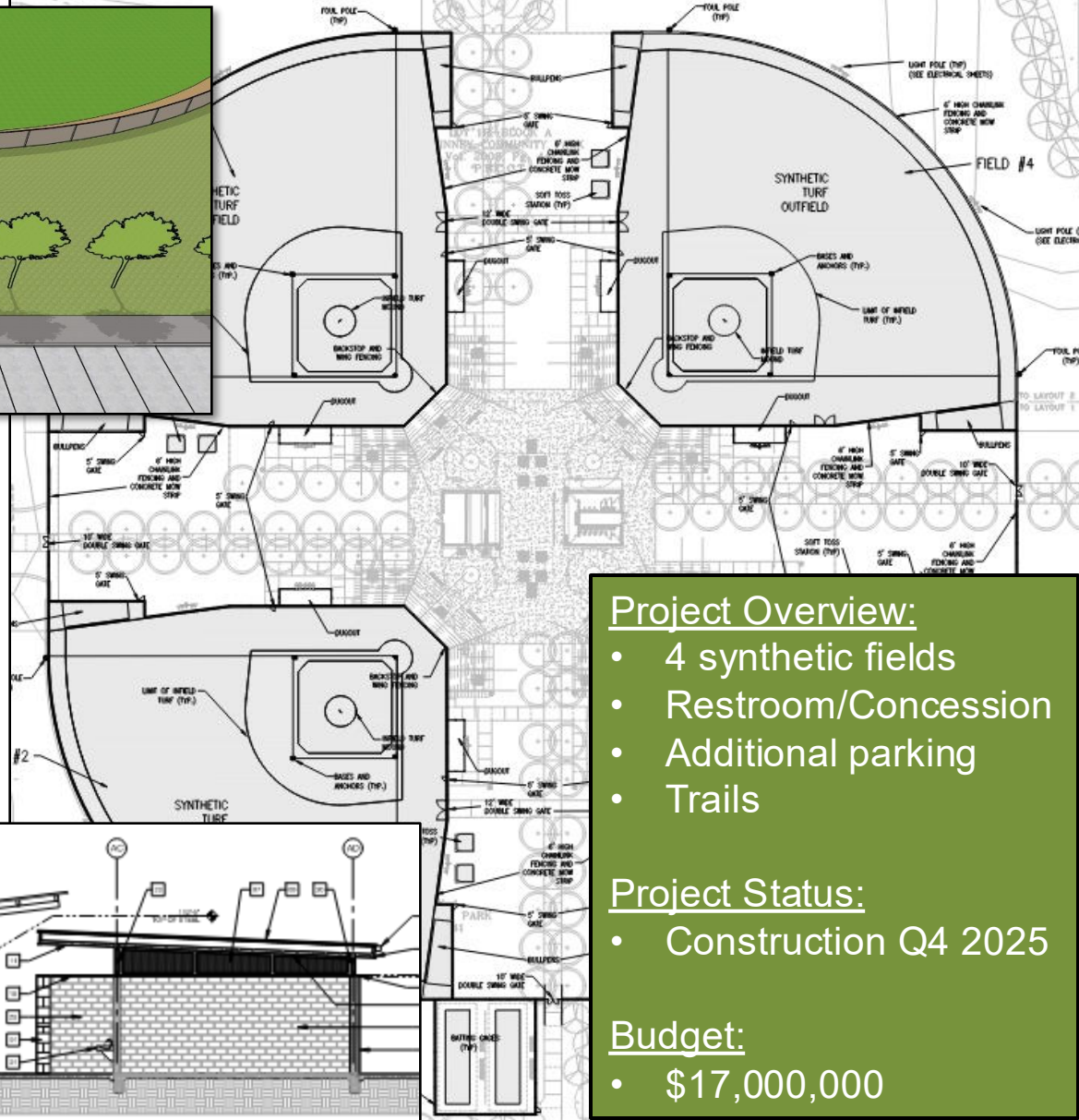
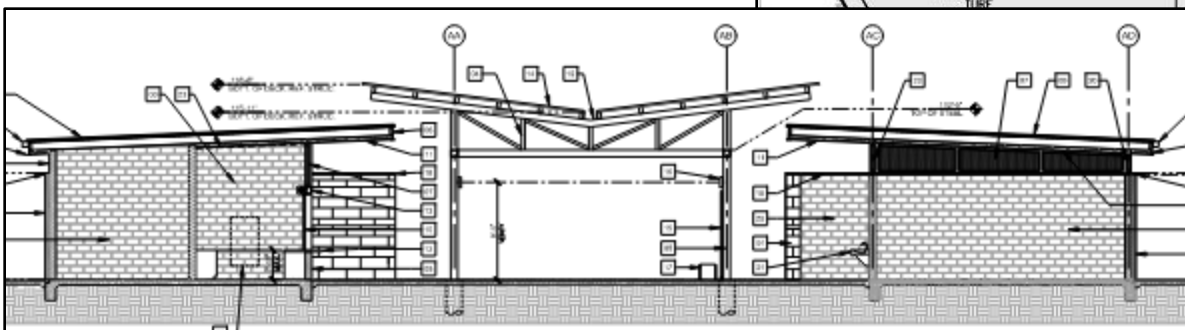
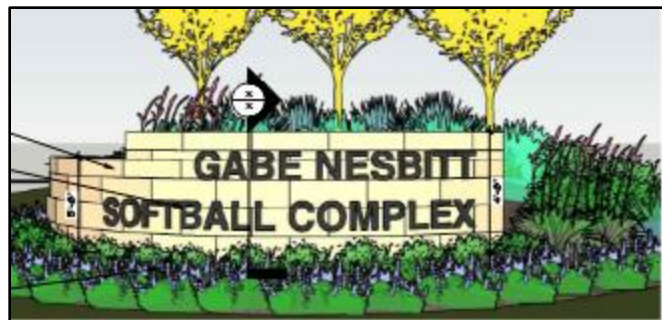
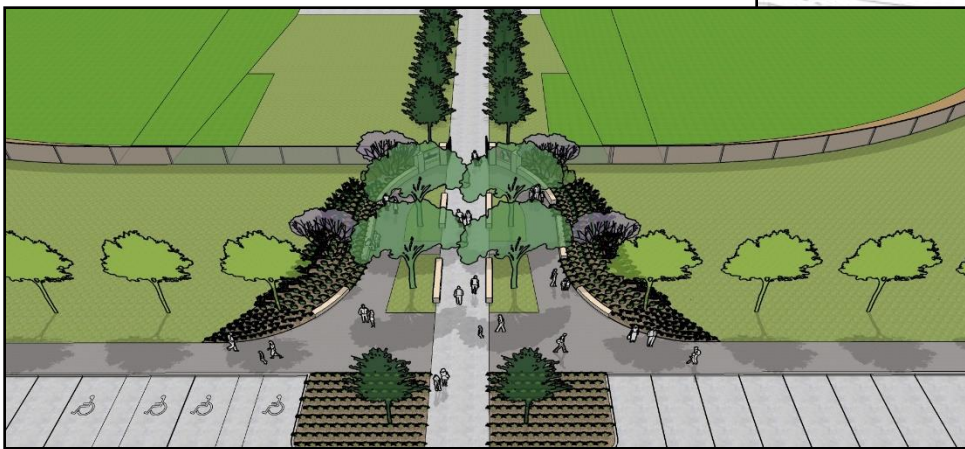
Project Status:

- Under Construction

Budget:

- \$1,000,000

GABE NESBITT IMPROVEMENTS



Project Overview:

- 4 synthetic fields
- Restroom/Concession
- Additional parking
- Trails

Project Status:

- Construction Q4 2025

Budget:

- \$17,000,000

GABE NESBITT 4PLEX SOFTBALL



Project Overview:

- 4 synthetic fields
- 3 natural grass fields
- Enhanced plaza
- Trails
- New parking
- Championship Field

Project Status:

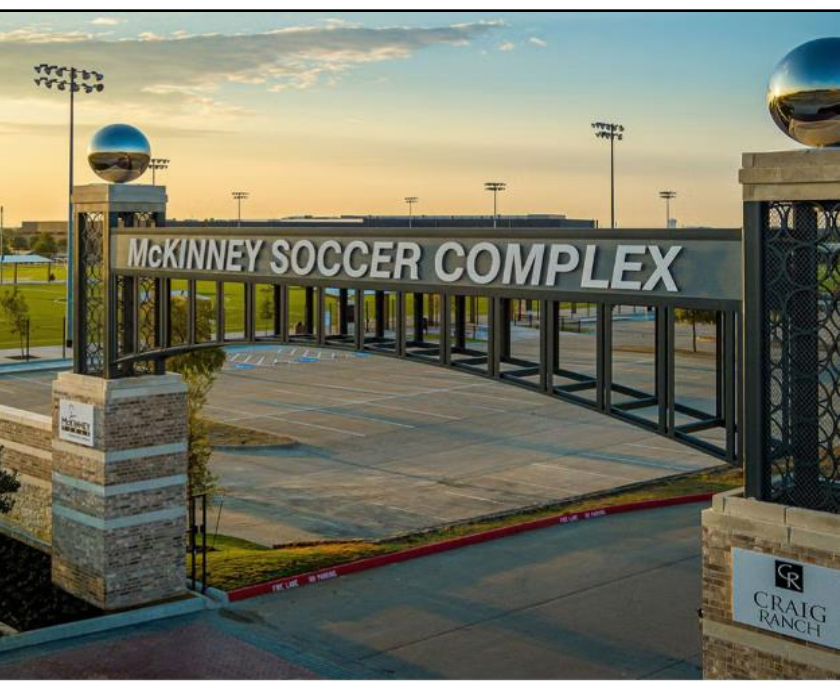
- Completion late Q1 2026

Budget:

- \$31,000,000



McKINNEY SOCCER COMPLEX AT CRAIG RANCH – PHASE 2



McKINNEY SOCCER COMPLEX AT CRAIG RANCH – PHASE 1

Project Overview:

- Playground replacement
- Project Playground donation
- NDS

Project Status:

- Construction

Budget:

- \$500,000



ASH WOODS PARK

Project Overview:

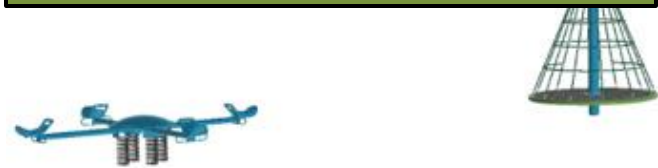
- Playground replacement
- Project Playground donation

Project Status:

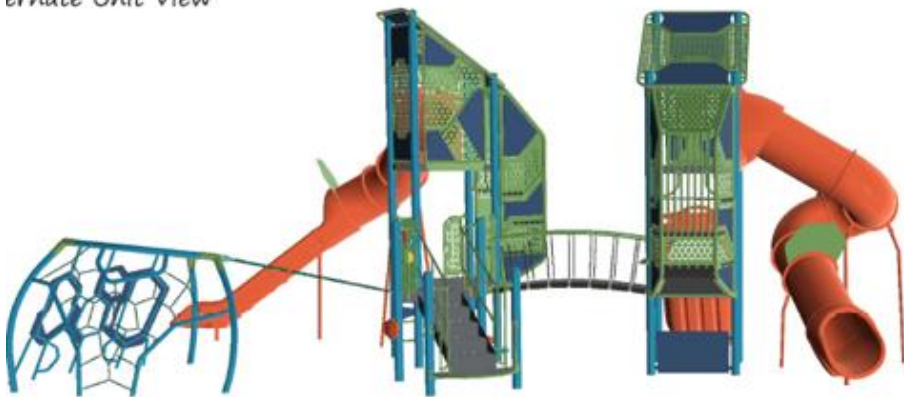
- Construction Dec 2025

Budget:

- \$210,000



ernate Unit View



INSPIRATION PARK



Project Overview:

- New playground, basketball, pavilion
- Trails
- New parking

Project Status:

- Construction Q1 2026

Budget:

- \$3,500,000

WATTLEY PARK

Design / Planning

Project Overview:

- Adding a second elevator

Project Status:

- Construction Q1 2026

Budget:

- \$1,800,000



APEX NEW ELEVATOR

Project Overview:

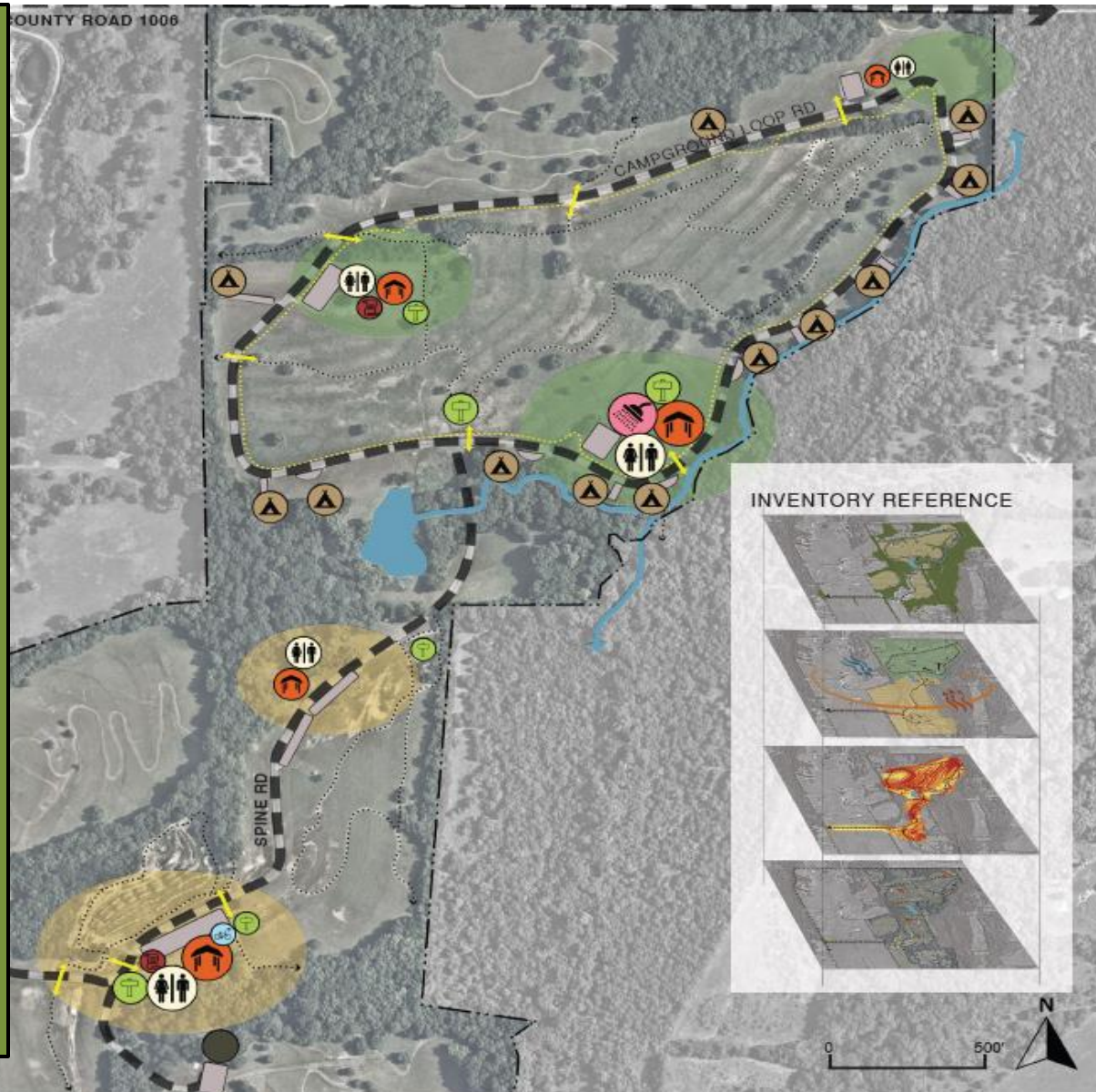
- Park road resurfacing
- Parking improvements
- ADA improvements
- Concrete trail around northern loop
- New restrooms, shower facilities and pavilions
- Septic conversion to sanitary sewer
- New site furnishings
- Water and electrical service to all camp sites
- Formalized entrance, signage
- Overlook
- Small maintenance barn

Project Status:

- Construction Q1 2026

Budget:

- \$13,000,000



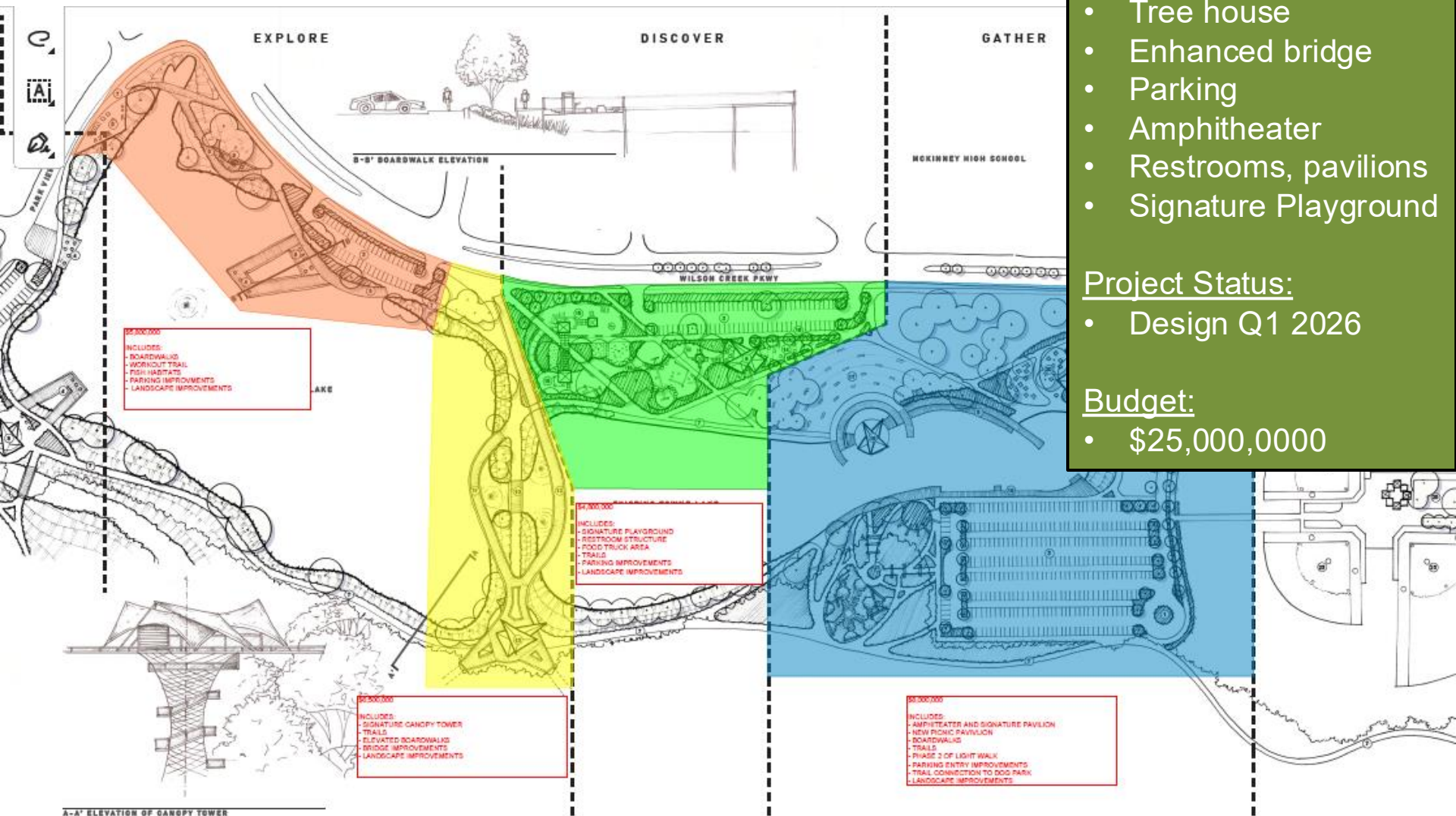
ERWIN PARK



ERWIN PARK



TOWNE LAKE PARK – MULTIPLE PROJECTS



Project Overview:

- Boardwalk trail
- Tree house
- Enhanced bridge
- Parking
- Amphitheater
- Restrooms, pavilions
- Signature Playground

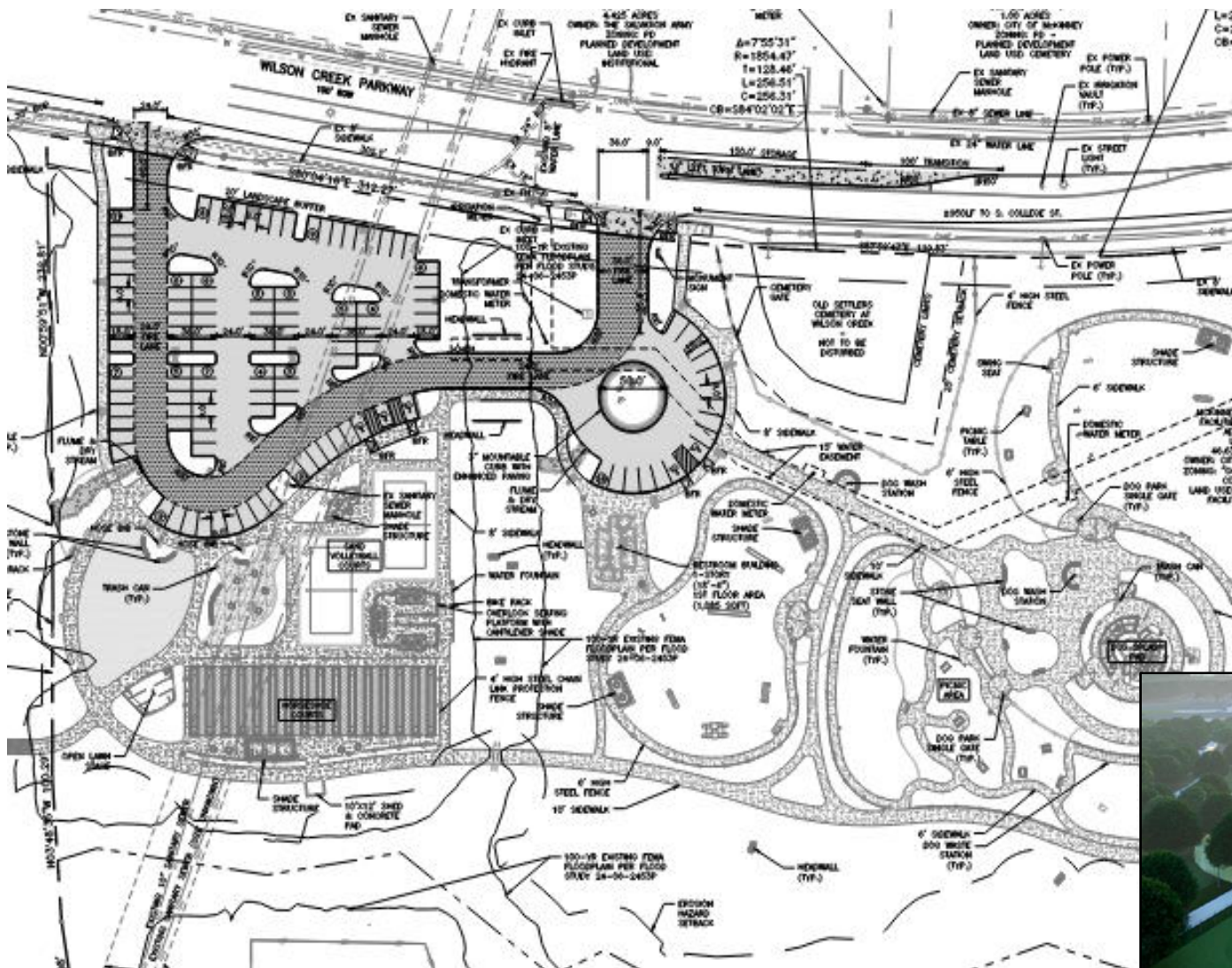
Project Status:

- Design Q1 2026

Budget:

- \$25,000,000

TOWNE LAKE PARK



Project Overview:

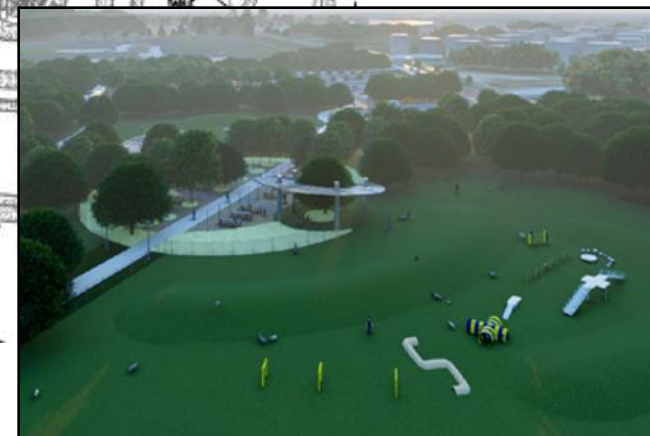
- Dog park
- Horseshoe pits
- Sand volleyball
- Parking
- Restrooms, pavilions

Project Status:

- Construction Q1 2026

Budget:

- \$5,500,000



BOB TOMES DOG PARK AT TOWNE LAKE



Project Overview:

- Spectator seating with shade
- ADA improvements
- Restroom/concession

Project Status:

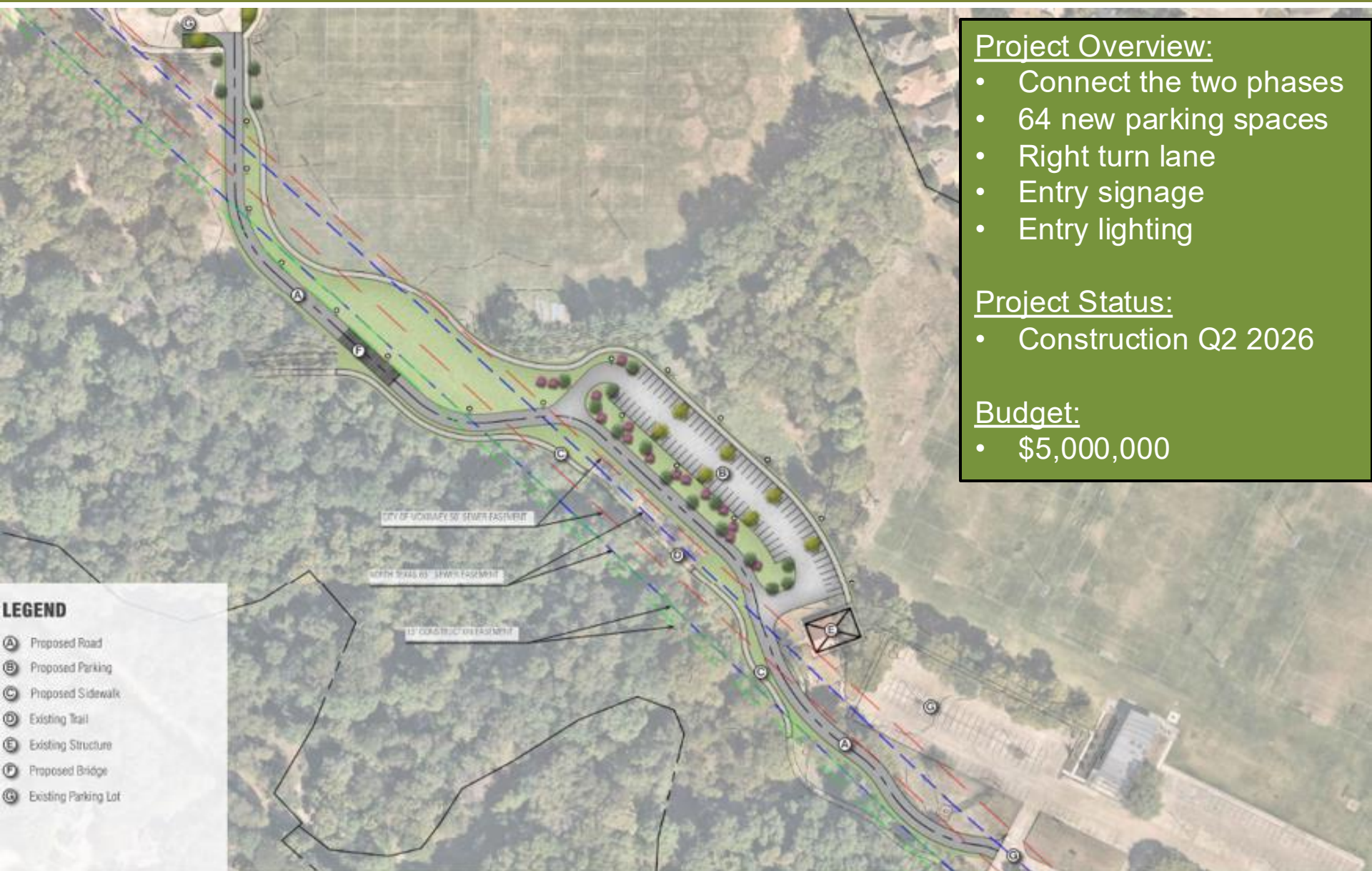
- Construction Q1 2026

Budget:

- \$3,500,000



GRADY LITTLEJOHN SPORTS COMPLEX



Project Overview:

- Connect the two phases
- 64 new parking spaces
- Right turn lane
- Entry signage
- Entry lighting

Project Status:

- Construction Q2 2026

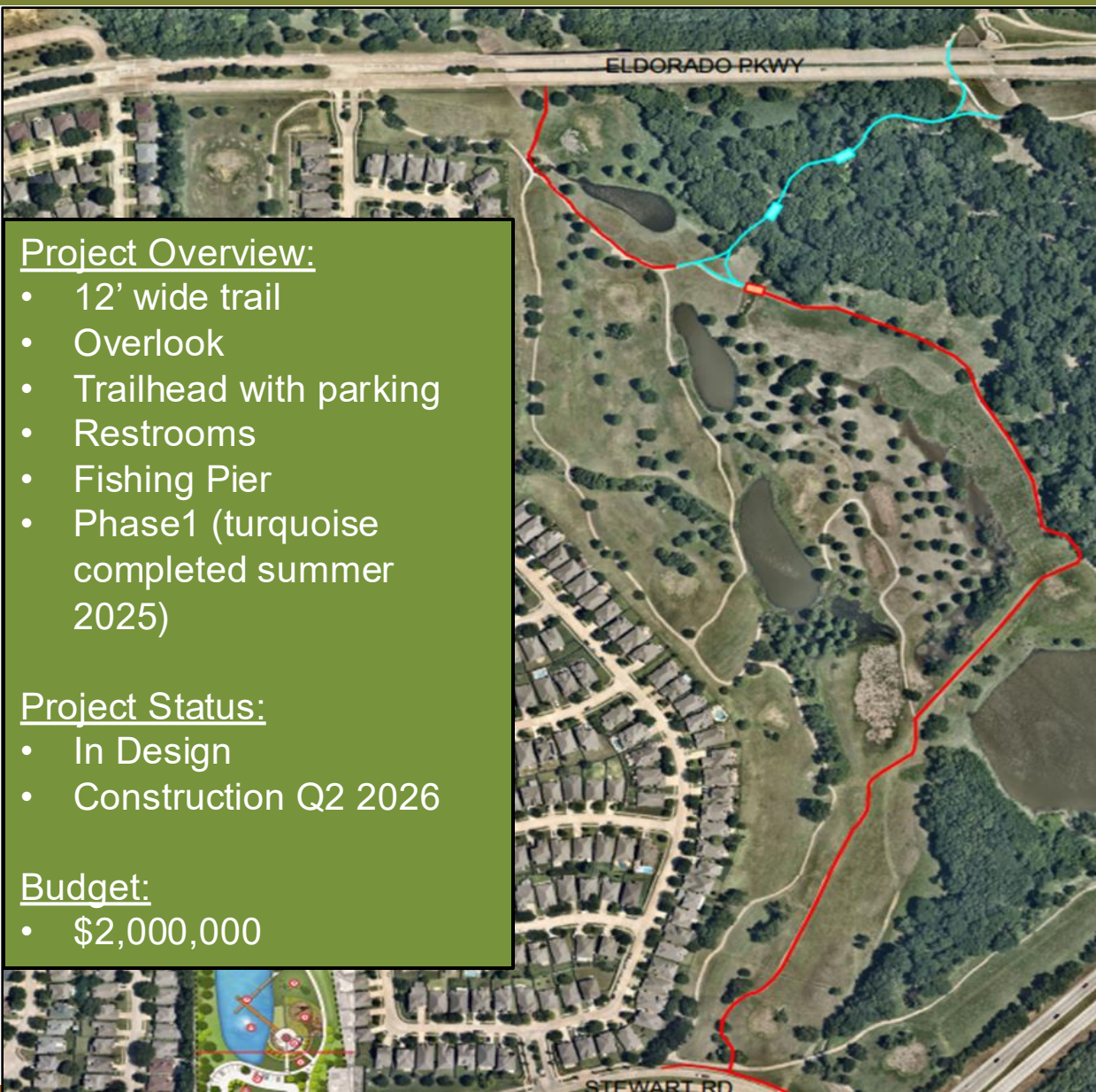
Budget:

- \$5,000,000

LEGEND

- (A) Proposed Road
- (B) Proposed Parking
- (C) Proposed Sidewalk
- (D) Existing Trail
- (E) Existing Structure
- (F) Proposed Bridge
- (G) Existing Parking Lot

AL RUSCHHAUPT SPORTS COMPLEX



Project Overview:

- 12' wide trail
- Overlook
- Trailhead with parking
- Restrooms
- Fishing Pier
- Phase1 (turquoise completed summer 2025)

Project Status:

- In Design
- Construction Q2 2026

Budget:

- \$2,000,000



WILSON CREEK TRAIL PHASE 2

Project Overview:

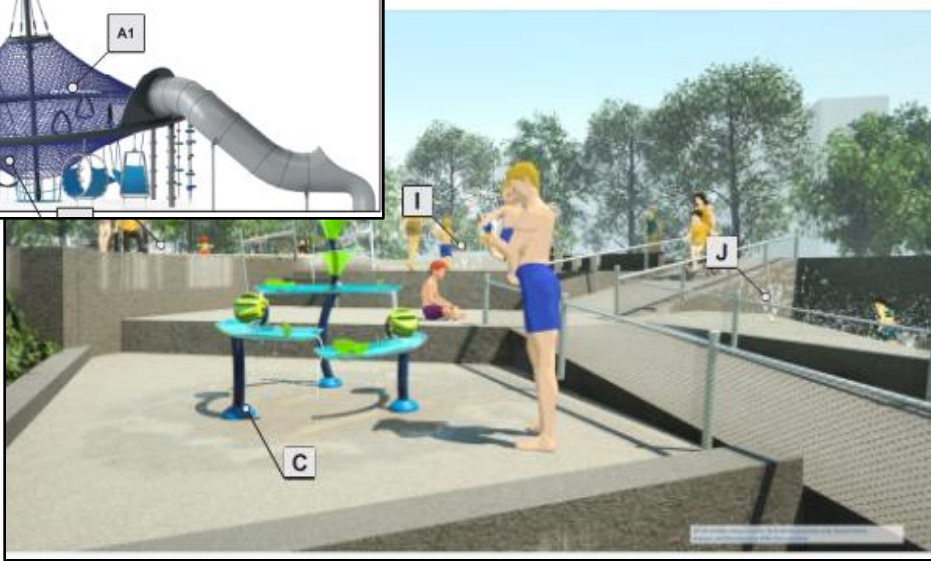
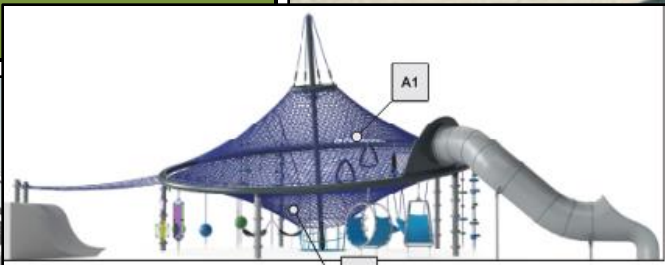
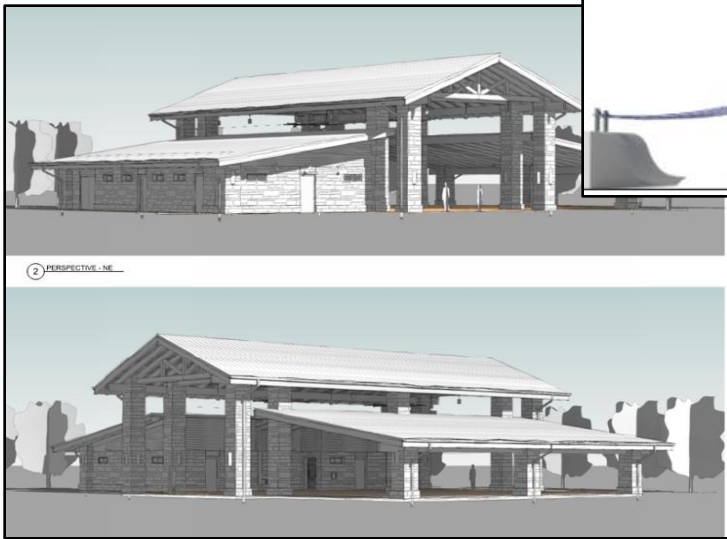
- Expanded playground, multi-level splash pad
- Large pavilion/restrooms
- Additional parking
- Stream enhancements
- Pickleball courts, Skatespot

Project Status:

- Construction Q1 2026

Budget:

- \$13,300,000



OLD SETTLER'S PARK

Project Overview:

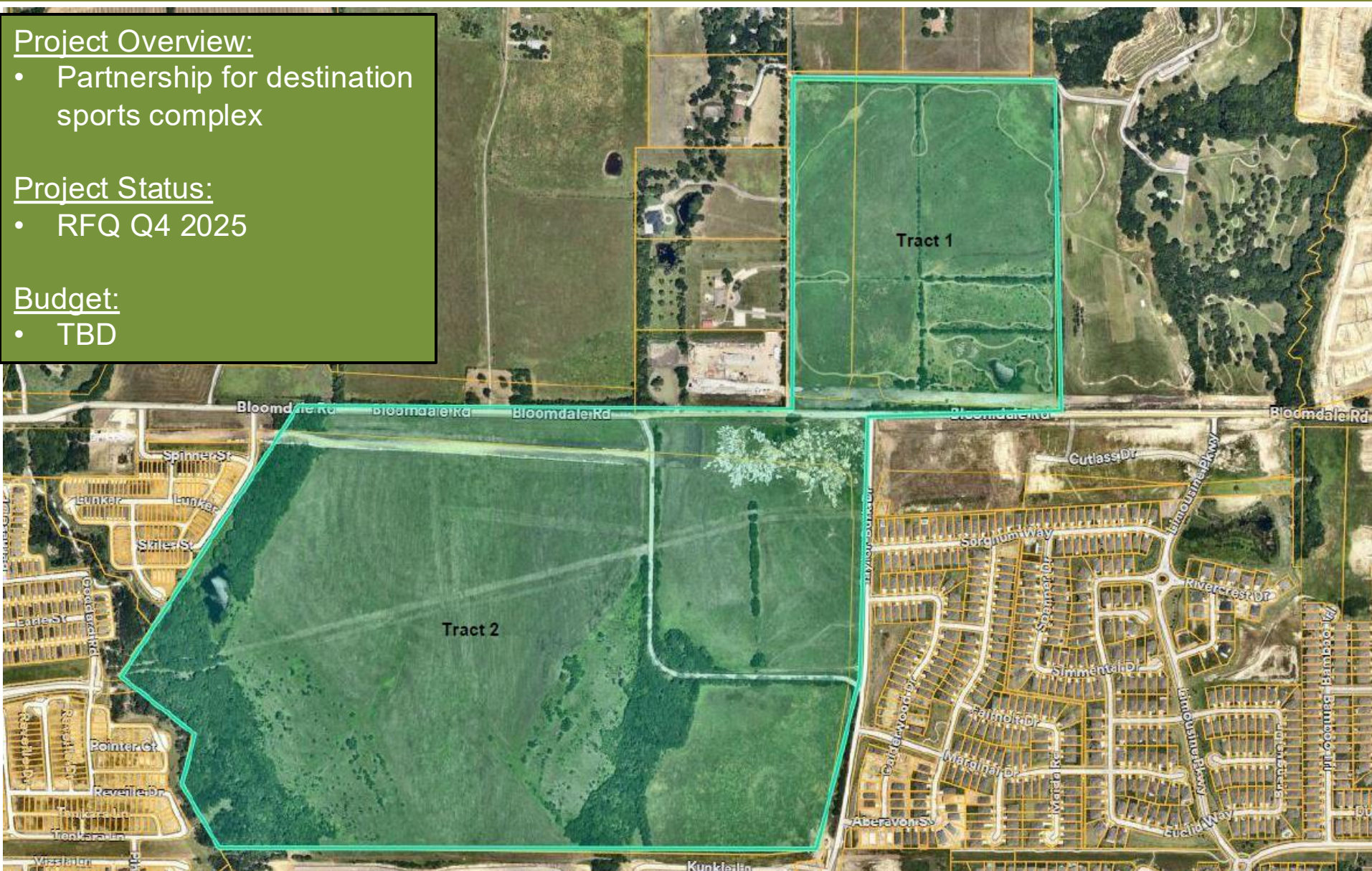
- Partnership for destination sports complex

Project Status:

- RFQ Q4 2025

Budget:

- TBD



REGIONAL SPORTS COMPLEX

Project Overview:

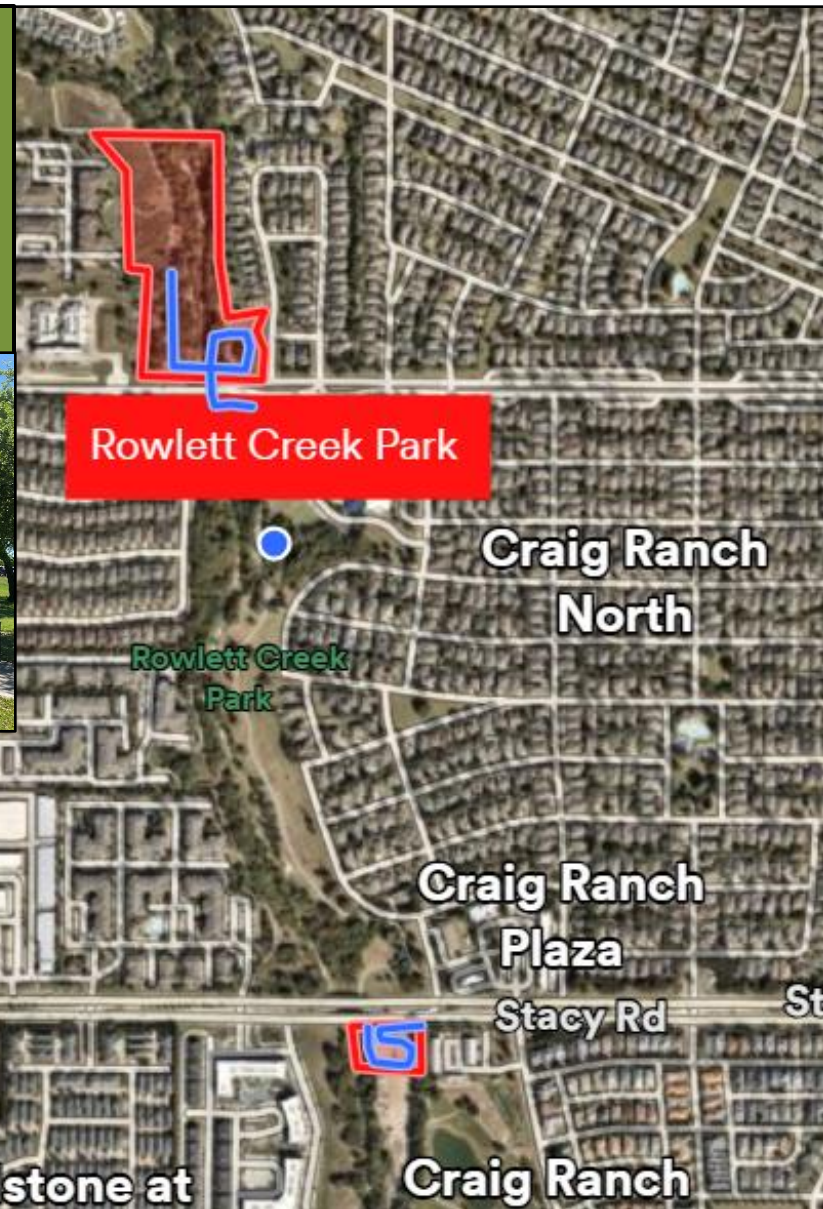
- Trail connecting two newly acquired park tracts
- Improvements to playground and pavilion
- Catalyst Trail

Project Status:

- Design Q1 2026

Budget:

- TBD



ROWLETT CREEK PARK AND TRAIL

Project Overview:

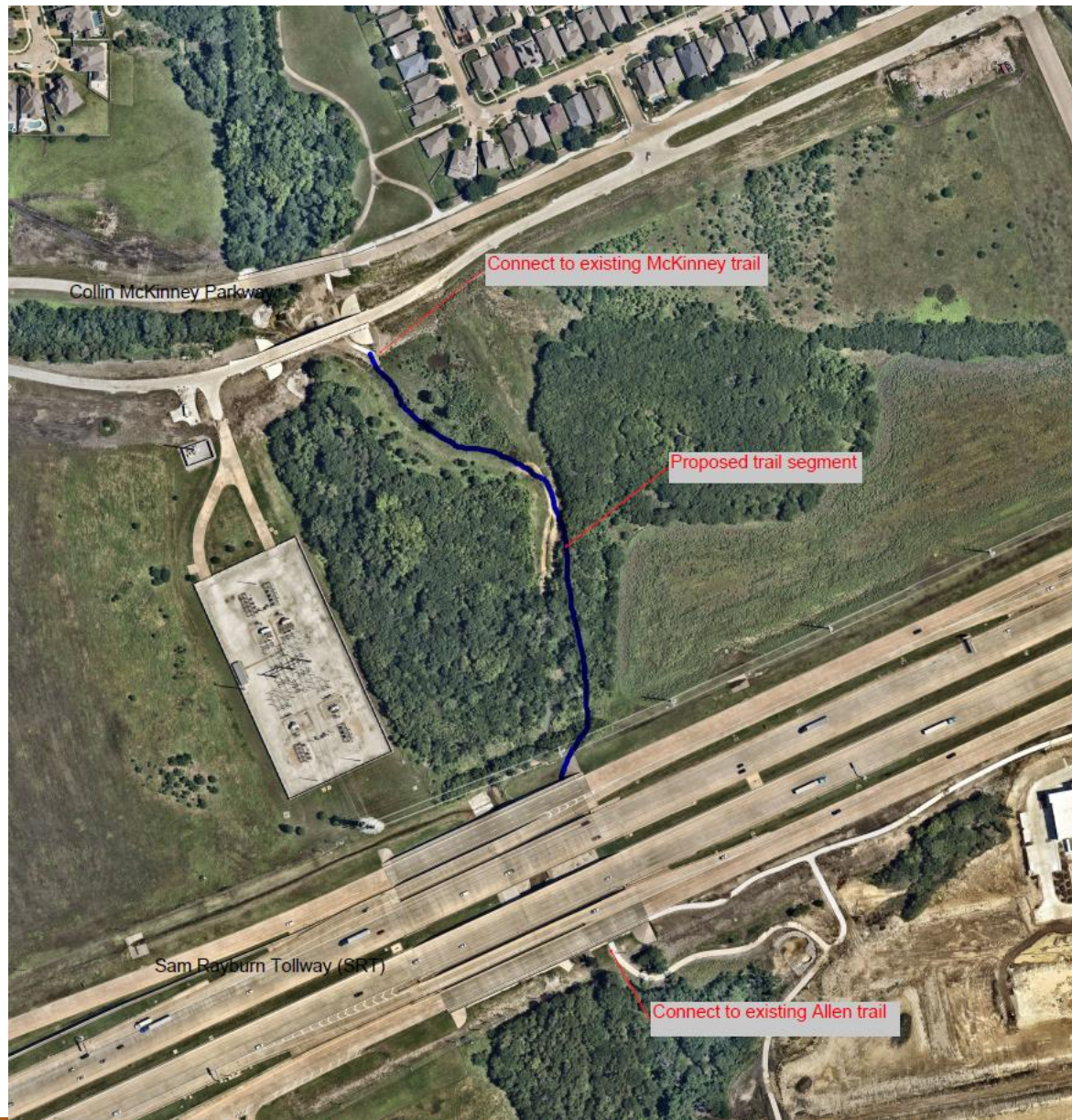
- Trail connection at SRT
- Catalyst trail connecting McKinney and Allen

Project Status:

- Design Q1 2026

Budget:

- TBD



COTTONWOOD CREEK TRAIL

Project Overview:

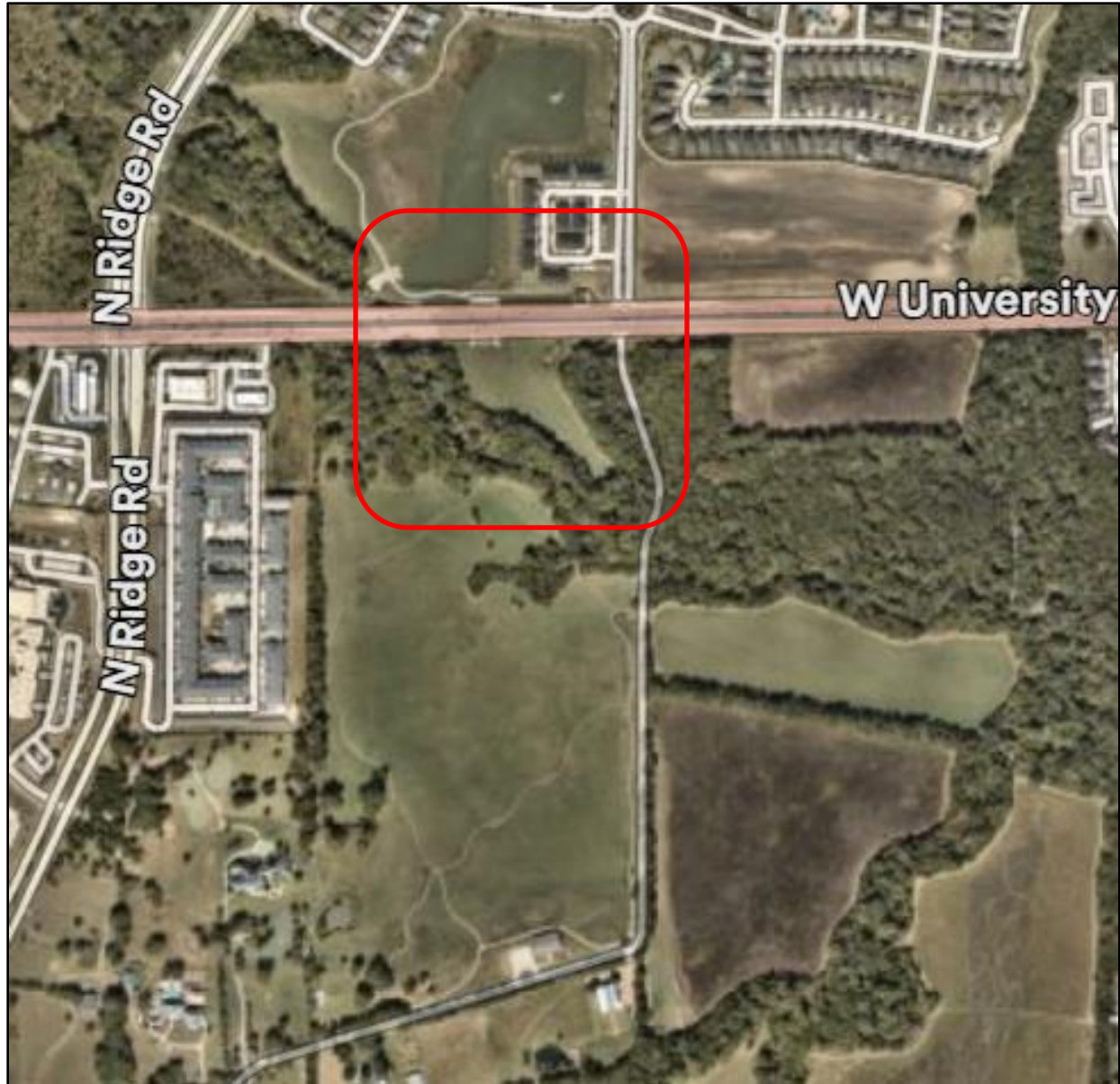
- Trail connection at 380 into the park
- Land acquisition
- Trailhead/signage
- Catalyst Trail

Project Status:

- Design Q1 2026

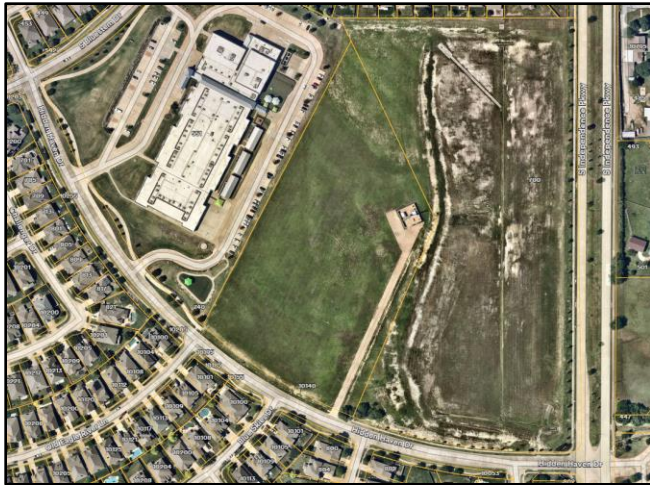
Budget:

- TBD



GRAY BRANCH TRAIL

New Projects Starting 2026



New neighborhood park



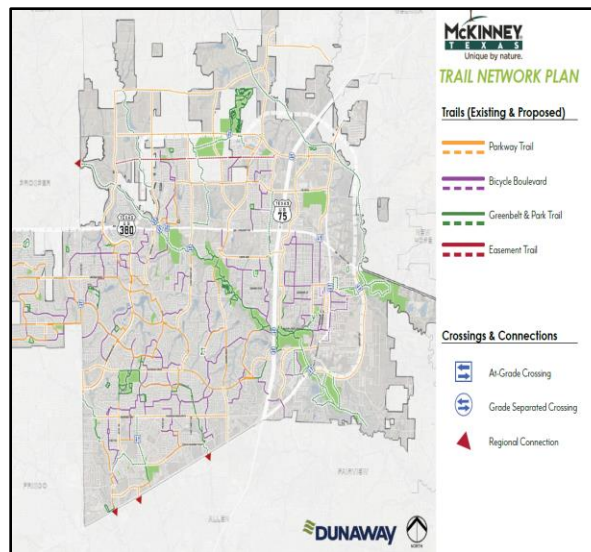
Hardin/Bloomdale trail

Median
Improvements
Hardin, Virginia,
and Bloomdale

APEX North



Jim Ledbetter Playground



Trails Update and Wayfinding



Tom Allen Park

NEW PROJECTS TO BEGIN IN 2026 - 7

Questions

Thank you