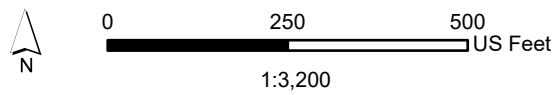
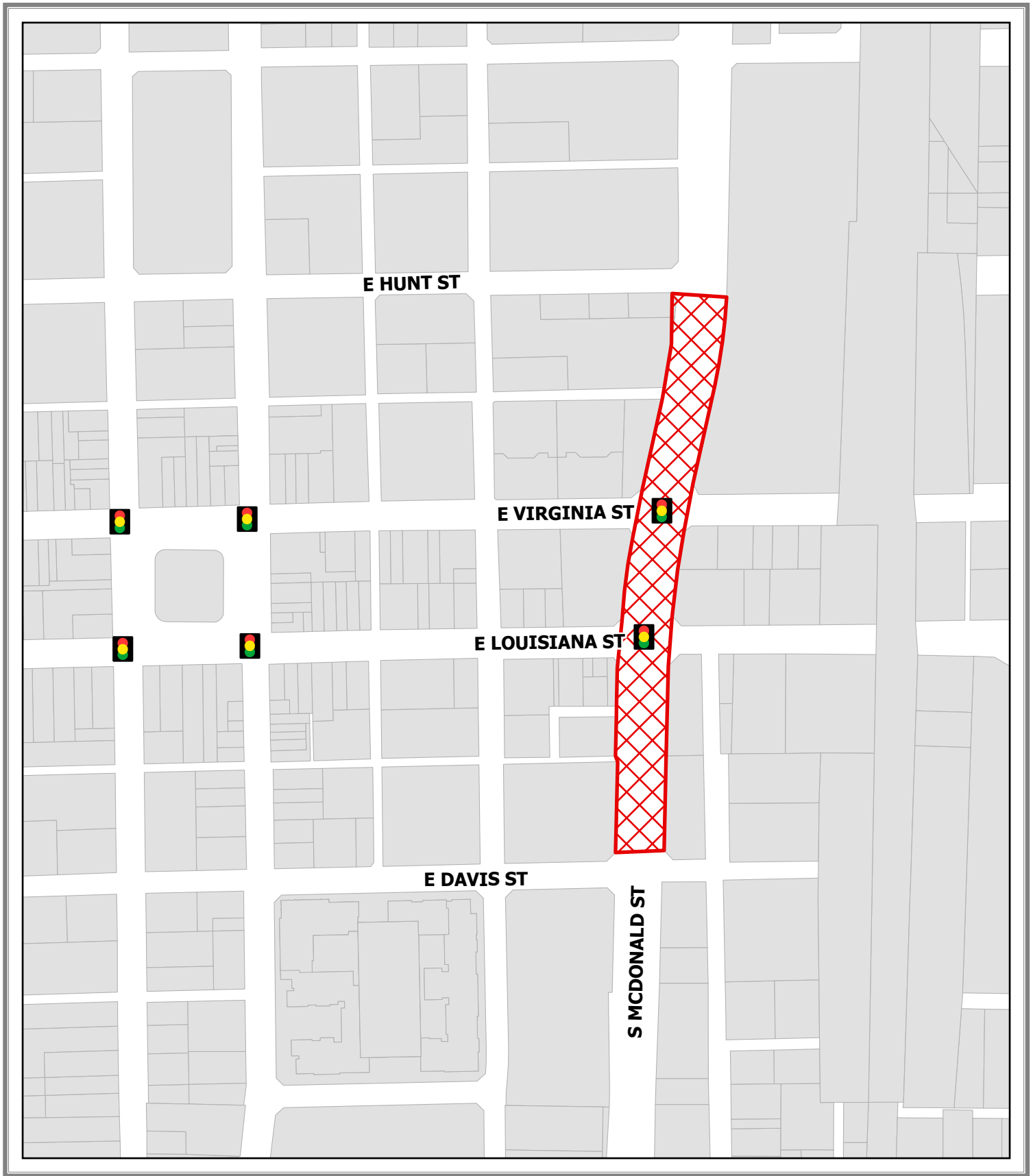
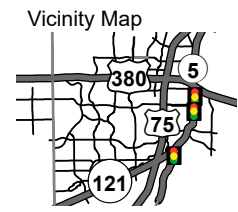


Document Path: Y:_Engineering\EngGIS\Projects\04_Location\Maps\30_McDStreetClosure\Location Map_McDStreetClosure.aprx



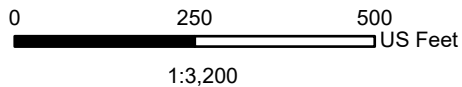
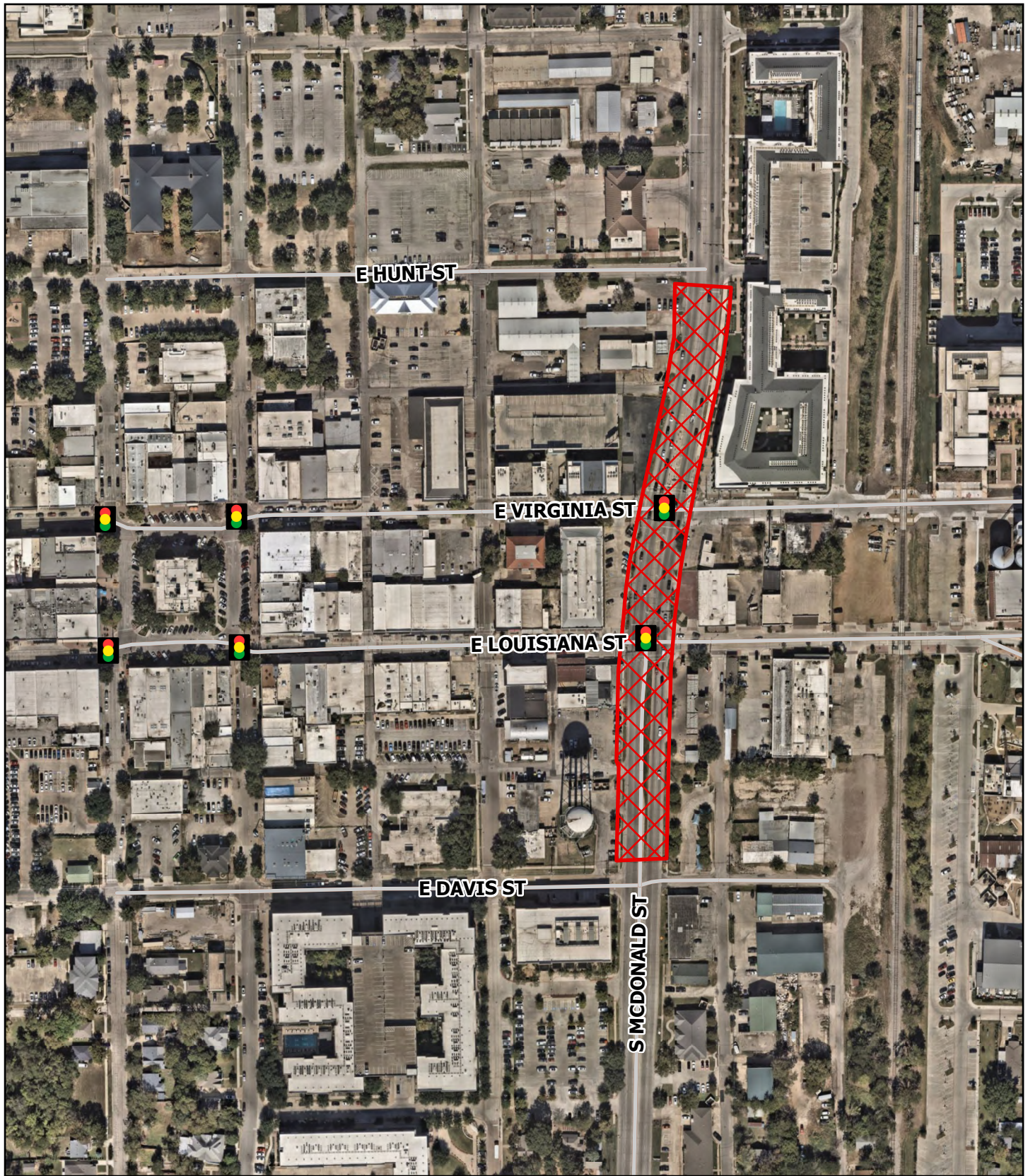
- Legend**
- Traffic Signals
 - Road Closure

Location Map
McDonald Street (SH 5) Closure





Source: Engineering GIS
Date: 12/17/2025

DISCLAIMER: This map and information contained in it were developed exclusively for use by the City of McKinney. Any use or reliance on this map by anyone else is at that party's risk and without liability to the City of McKinney, its officials or employees for any discrepancies, errors, or variances which may exist.

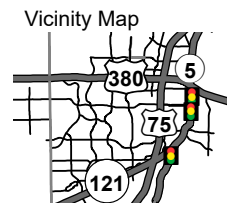


Legend

-  Traffic Signals
-  Road Closure

Location Map

McDonald Street (SH 5) Closure



Source: Engineering GIS
Date: 12/17/2025

DISCLAIMER: This map and information contained in it were developed exclusively for use by the City of McKinney. Any use or reliance on this map by anyone else is at that party's risk and without liability to the City of McKinney, its officials or employees for any discrepancies, errors, or variances which may exist.