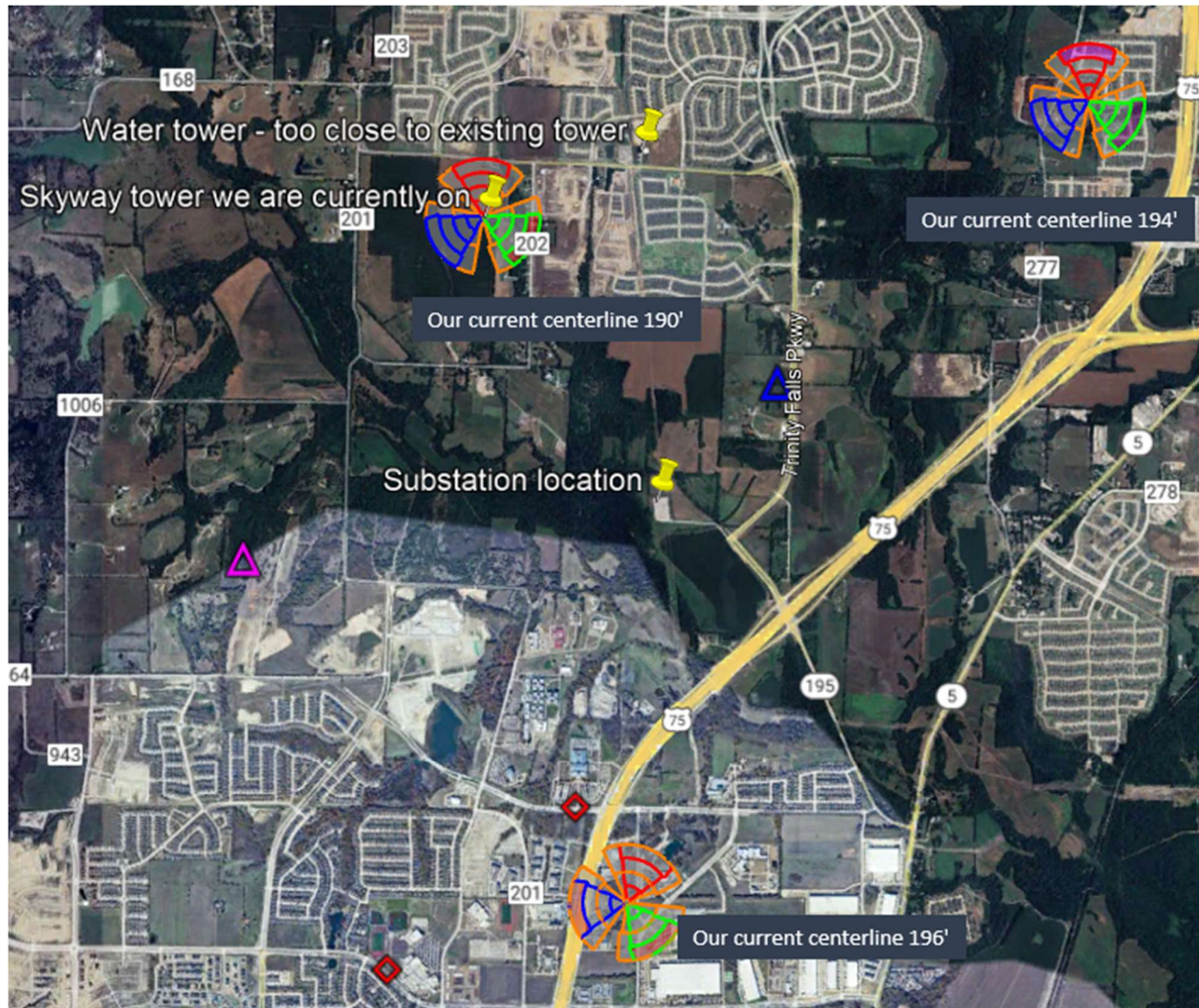


MAP OF EXISTING VERIZON LOCATIONS/LACK OF ALTERNATIVES



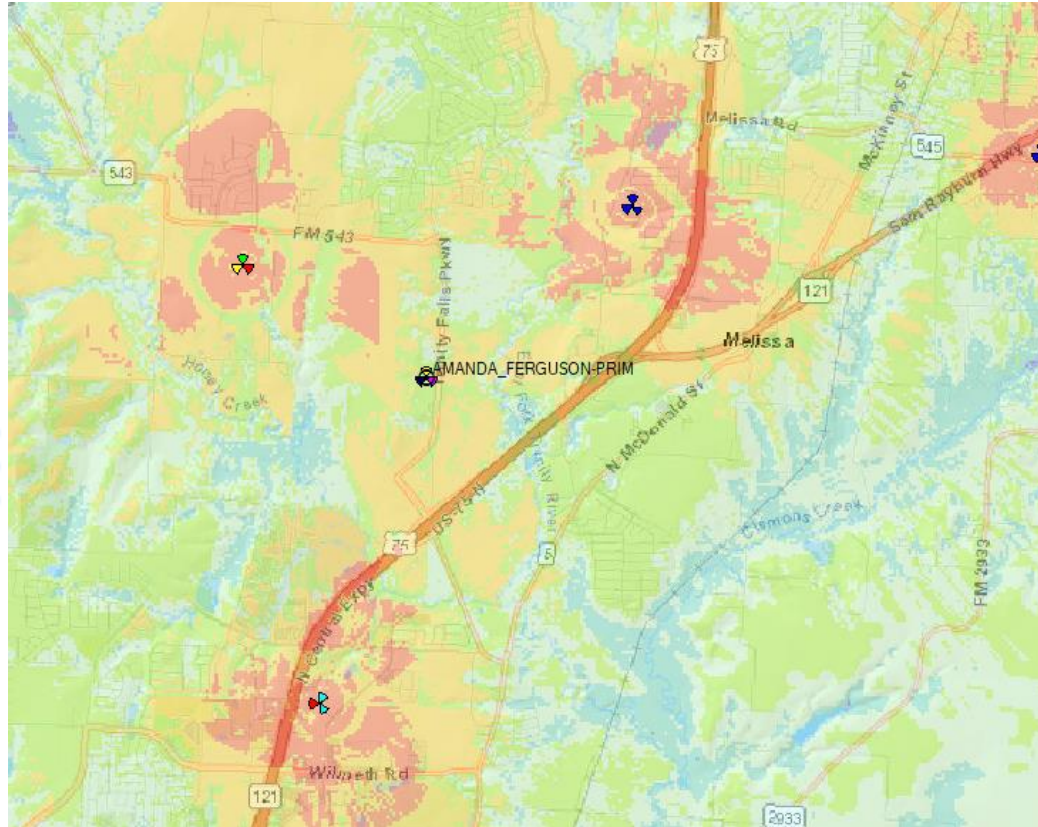
The proposed site (blue triangle) is carefully positioned to offload capacity from the surrounding 3 Verizon Wireless locations. These surrounding Verizon locations have antenna centerlines of 190', 194', and 196'. Verizon prefers a similar centerline in this location. The proposed 150' Verizon antenna centerline is the minimum necessary height to meet service objectives and properly serve the targeted portions of Hwy 75 and Trinity Falls Parkway and surrounding and future residential and commercial development while balancing the capacity load appropriately with the 3 adjacent sites

The following are not viable alternatives:

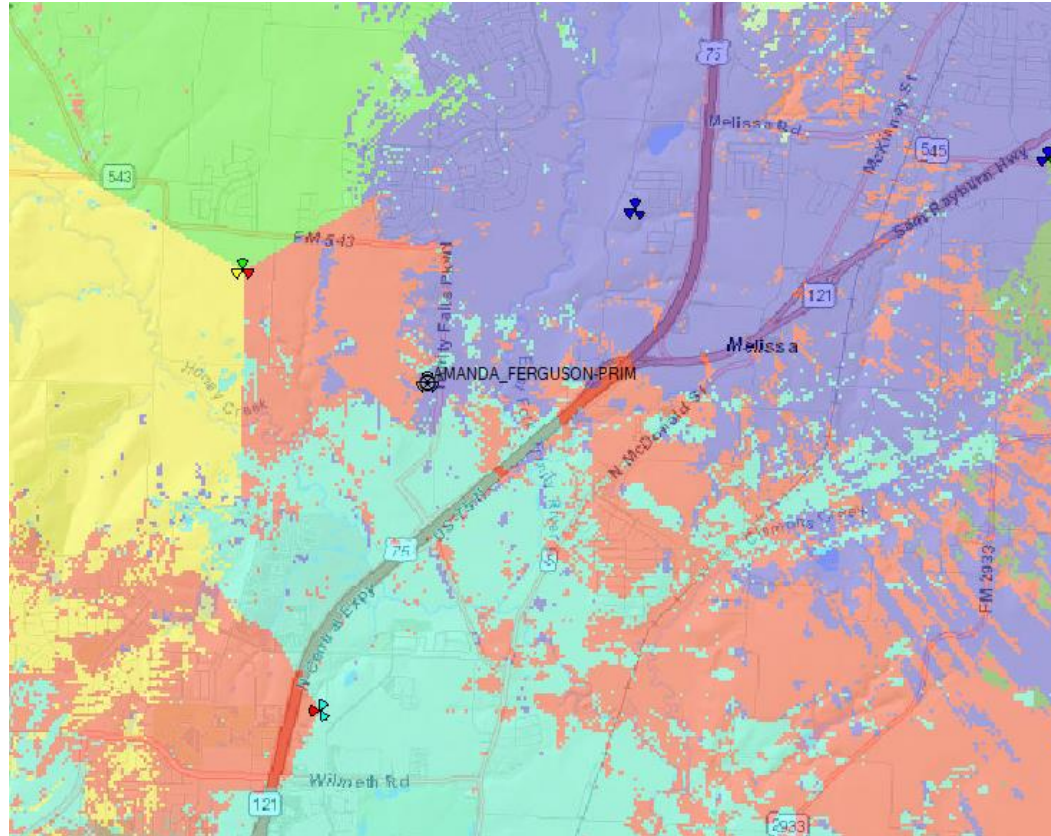
- The Skyway Towers LLC 195' self-supporting lattice tower west of CR 202 – about 2km northwest – 6,560' away (Verizon is already located on this tower at a centerline of 190')
- A new 222' City of McKinney elevated water storage tank (EST) at 4710 FM 543 1.584km northwest – 5,196' away. (It is too close to the existing Skyway Tower location above.)
- The substation west of Laude Howell Pkwy/Trinity Falls Pkwy about .996km south – 3268' away. (Oncor will not lease space at this substation.)

Current coverage - RSRP without AMANDA_FERGUSON site

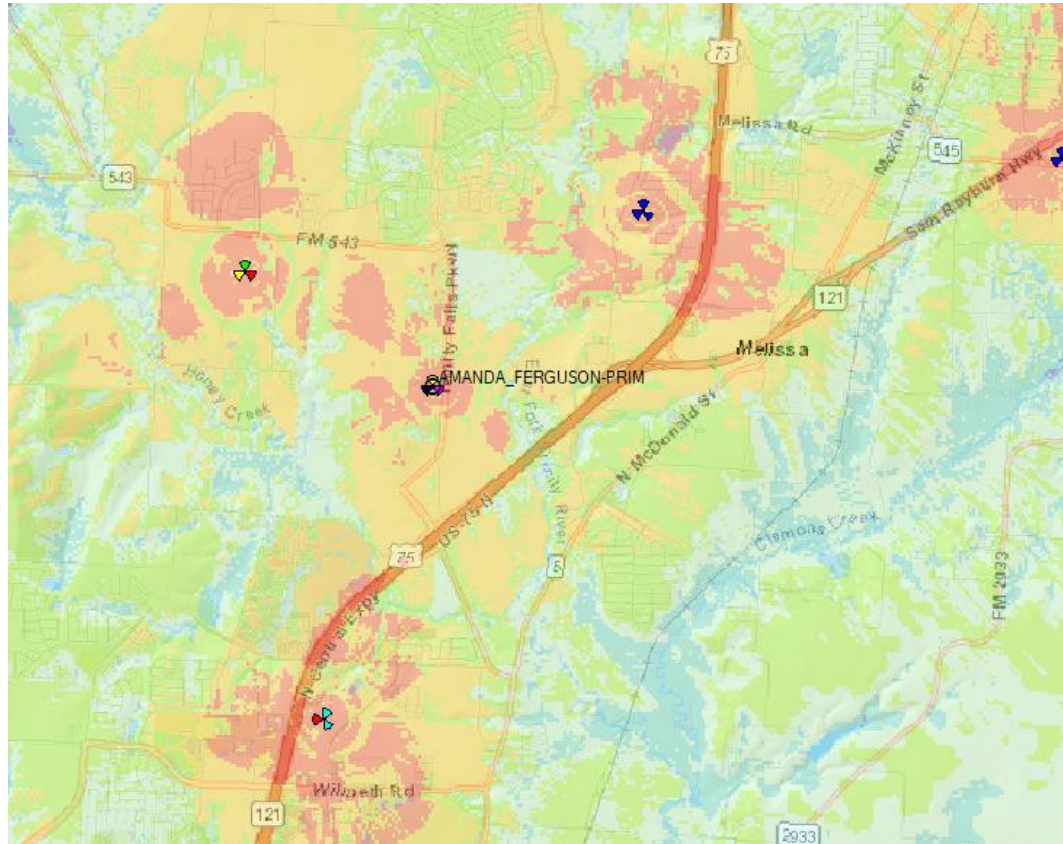
- RSRP Level (DL) (dBm) ≥ -70
- RSRP Level (DL) (dBm) ≥ -80
- RSRP Level (DL) (dBm) ≥ -90
- RSRP Level (DL) (dBm) ≥ -100
- RSRP Level (DL) (dBm) ≥ -110
- RSRP Level (DL) (dBm) ≥ -120



Current coverage – Best server plot without AMANDA_FERGUSON site



Coverage prediction - RSRP with AMANDA_FERGUSON site at 150' centerline



Best server plot with AMANDA_FERGUSON site at 150' centerline

