

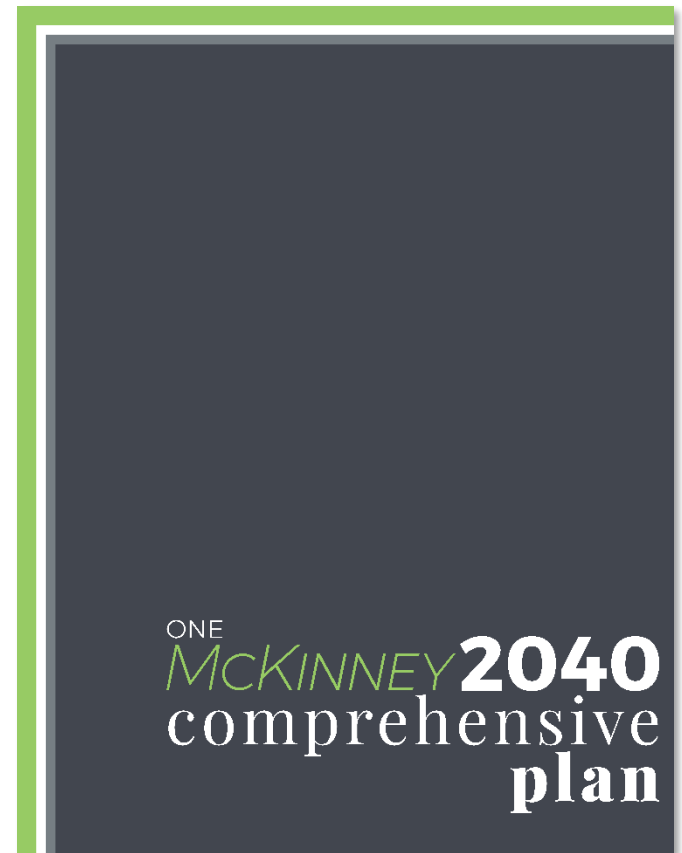
2022 Comprehensive Plan Minor Amendments

22-0008M

November 8, 2020

Introduction

- The purpose of today's presentation
 - Present the proposed amendments
 - Provide a recommendation to Council
- General outline of the presentation
 - Overview of amendments
 - Master Thoroughfare Plan amendments
 - Future Land Use Plan amendments
 - Land Use Diagram amendments
 - Summary & Discussion



Overview of Amendments

- Typographical/Grammar Change
 - Corrected typographical and formatting errors that have been discovered throughout the Comprehensive Plan.
- Clarifying Changes
 - Updated the Master Thoroughfare Plan to reflect changes in engineered projects/plans and/or roadway construction.
 - Corresponding revisions are reflected in the Future Land Use Plan and Land Use Diagrams.

Master Thoroughfare Plan

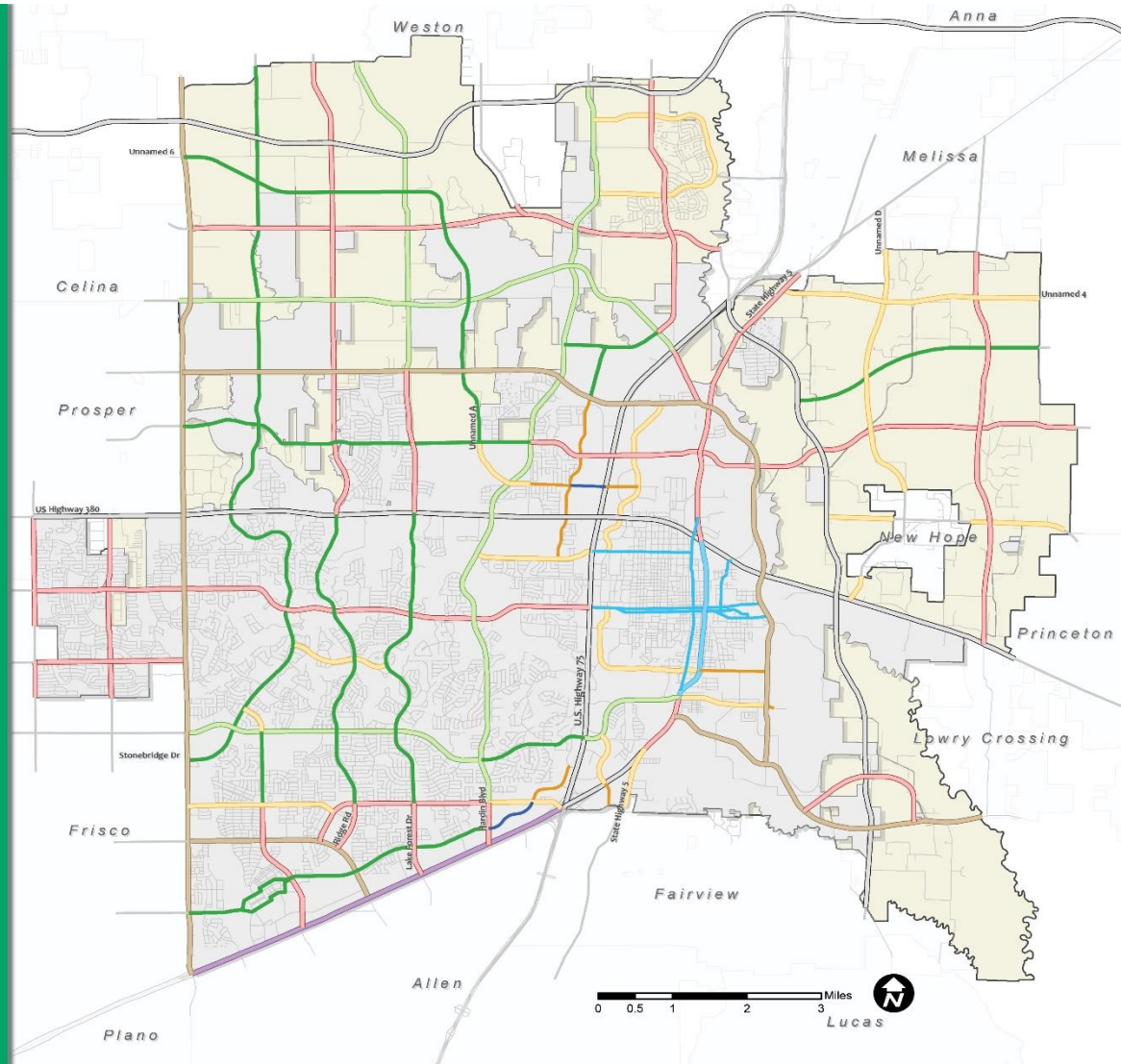
Existing Master Thoroughfare Plan

MASTER THOROUGHFARE PLAN

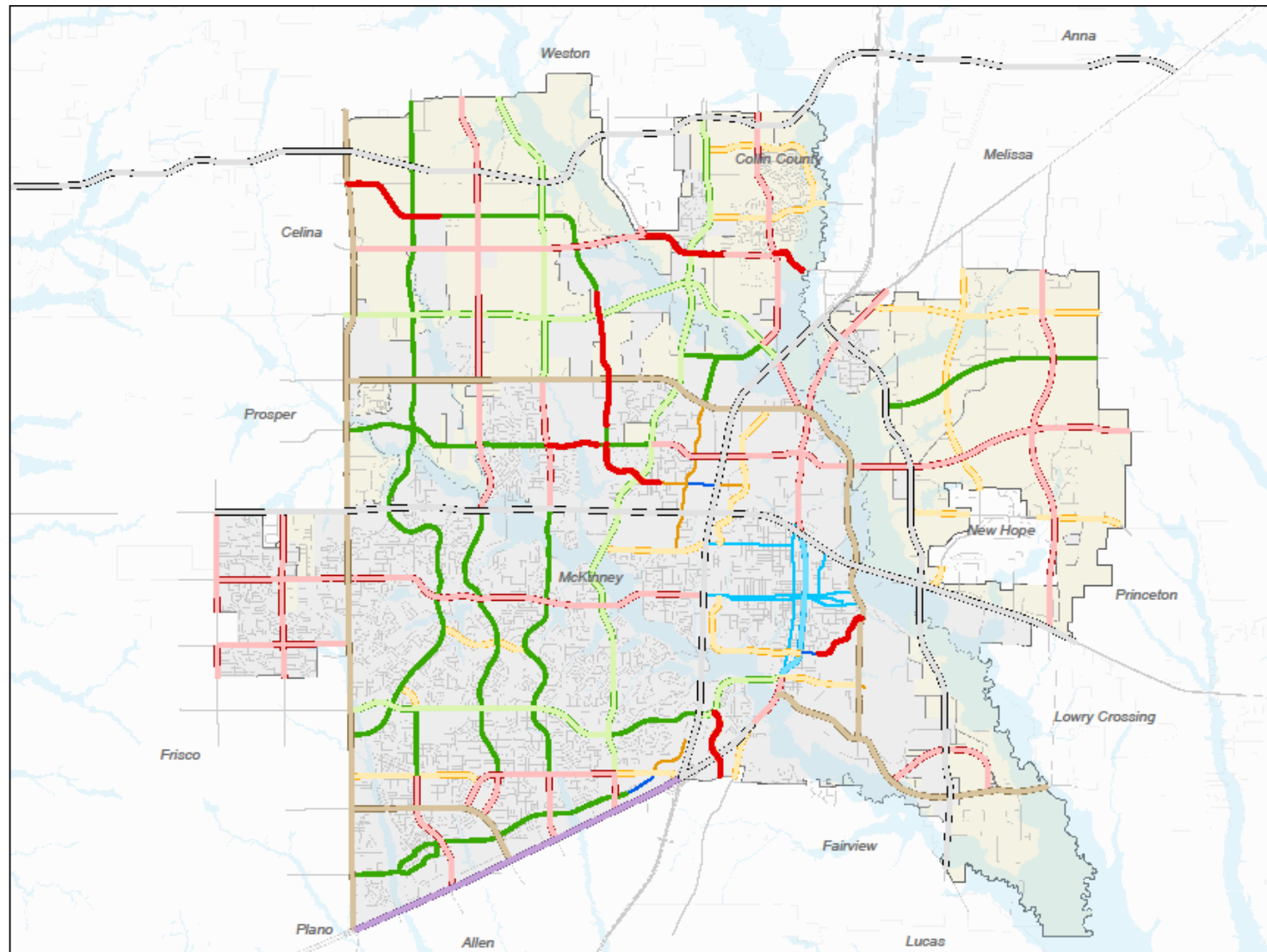
LEGEND

-  Major Regional Highway/Multi-Modal
-  Tollway
-  Principal Arterial (130' - 6 lanes)
-  Major Arterial (124' - 6 lanes)
-  Greenway Arterial (140' - 6 lanes)
-  Greenway Arterial (120' - 4 lanes)
-  Minor Arterial (100' - 4 lanes divided)
-  Minor Arterial (80' - 4 lanes undivided)
-  Minor Arterial (70' - 3 lanes)
-  Town Thoroughfare (2 lanes)
-  Town Thoroughfare (2 lanes one-way pairing)
-  McKinney City Limits
-  McKinney ETJ
-  Other Cities

Disclaimer: The Master Thoroughfare Plan provides generalized locations for future thoroughfares. Alignments may shift as roads are engineered and designed to accommodate floodplain areas and to meet sound engineering and urban planning principles. The Roadway lines shown on the plan are not precise (site specific) locations of future thoroughfares.



Changes to Master Thoroughfare Plan



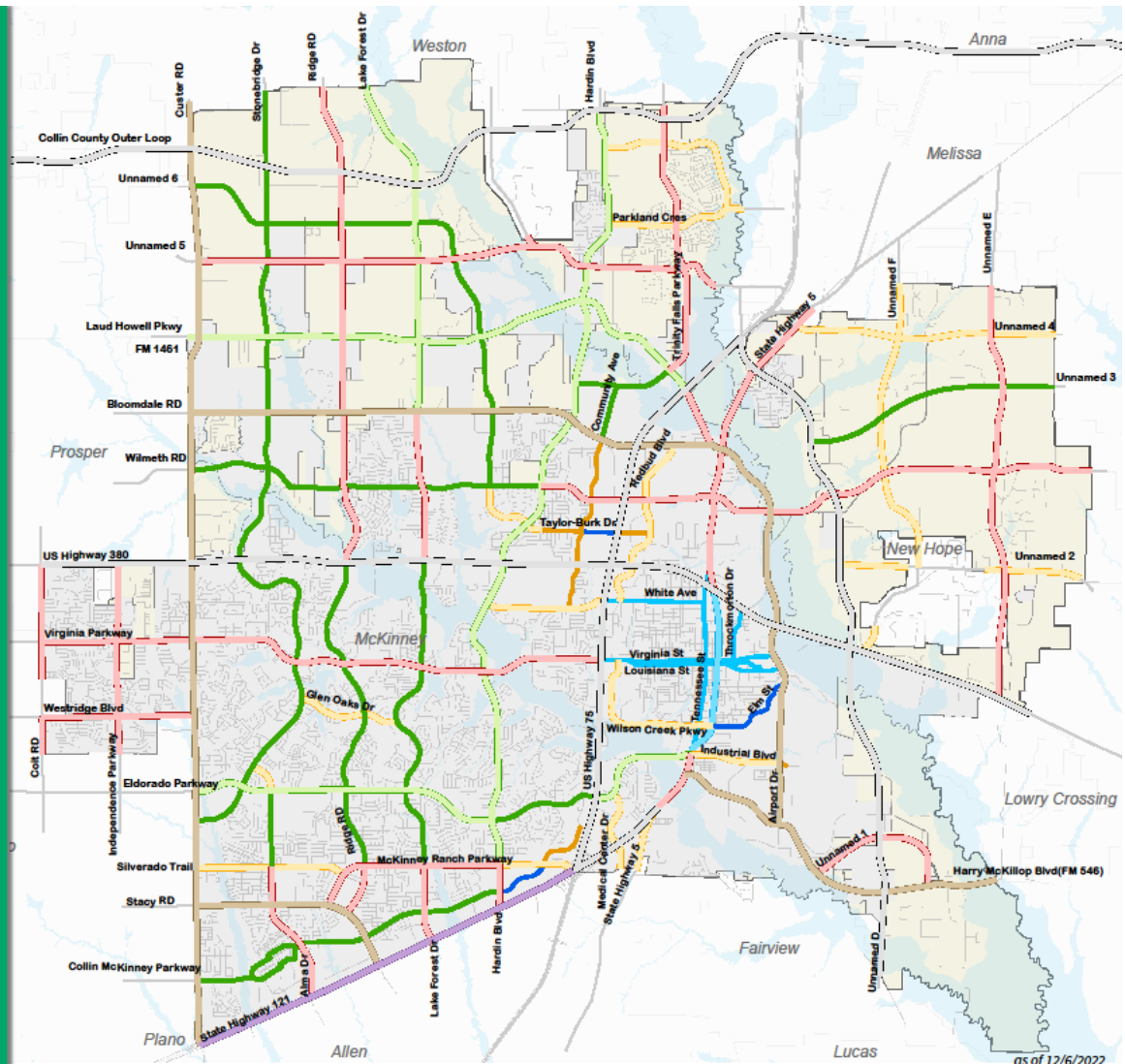
Proposed Master Thoroughfare Plan

MASTER THOROUGHFARE PLAN

LEGEND

- Major Regional Highway/Multi-Modal (min 124' ROW)
- Tollway
- Principal Arterial (130' - 6 lanes)
- Major Arterial (124' - 6 lanes)
- Greenway Arterial (140' - 6 lanes)
- Greenway Arterial (120' - 4 lanes)
- Minor Arterial (100' - 4 lanes divided)
- Minor Arterial (80' - 4 lanes undivided)
- Minor Arterial (70' - 3 lanes)
- Town Thoroughfare (4 lanes)
- Town Thoroughfare (2-3 lanes)
- McKinney City Limits
- McKinney ETJ
- Other Cities

Disclaimer: The Master Thoroughfare Plan provides generalized locations for future thoroughfares. Alignments may shift as roads are engineered and designed to accommodate floodplain areas and to meet sound engineering and urban planning principles. The Roadway lines shown on the plan are not precise (site specific) locations of future thoroughfares.



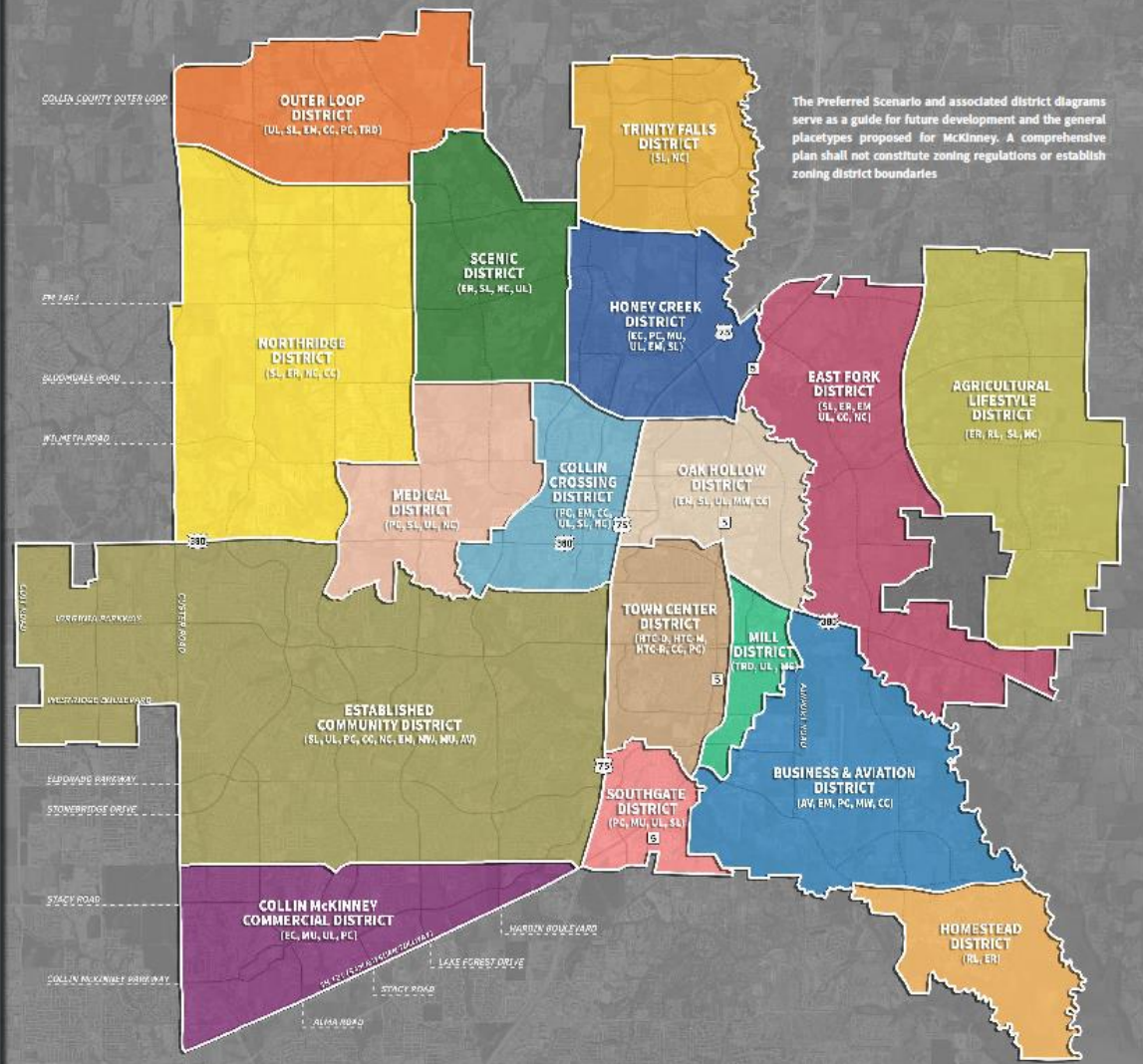
Proposed Preferred Scenario

PREFERRED SCENARIO

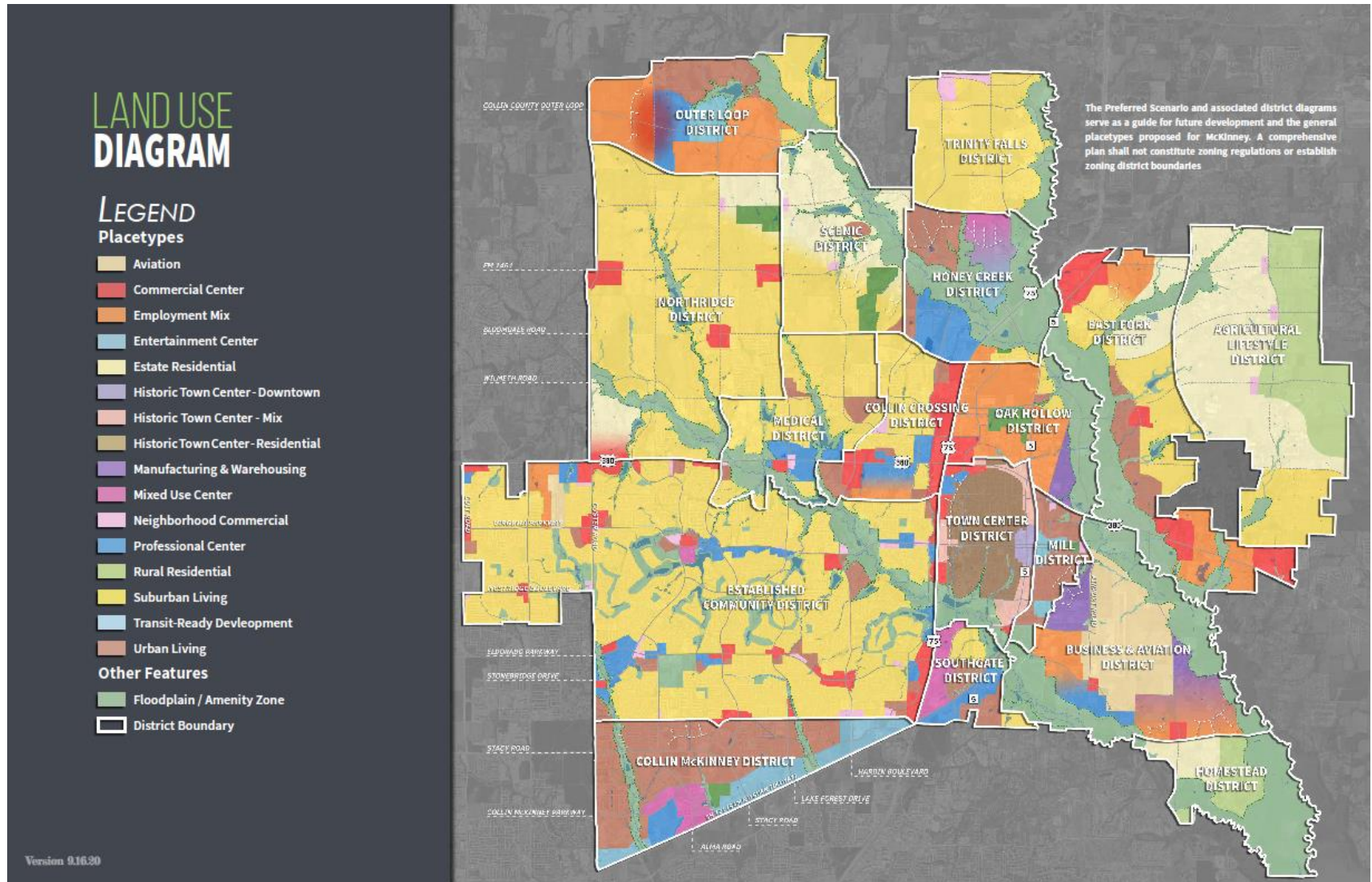
PLACETYPES

- Aviation (AV)
- Commercial Center (CC)
- Employment Mix (EM)
- Entertainment Center (EC)
- Estate Residential (ER)
- Historic Town Center - Downtown (HTC-D)
- Historic Town Center - Mix (HTC-M)
- Historic Town Center - Residential (HTC-R)
- Manufacturing & Warehousing (MW)
- Mixed Use Center (MU)
- Neighborhood Commercial (NC)
- Professional Center (PC)
- Rural Residential (RR)
- Suburban Living (SL)
- Transit-Ready Development (TRD)
- Urban Living (UL)

Version 9.16.20



Proposed Land Use Diagram



Question & Comments

