

Roy and Helen Hall Memorial Library

Library Board & Staff Presentation | November 16, 2023





TALKING POINTS

- 01 Project Goals & Visioning
- 02 Plan Development
- 03 Interior Perspectives
- 04 Cost Estimate

01 Project Goals & Visioning

- Themes from staff and community feedback:
- Community input was gathered via an online survey and reflected 500+ survey responses.
 - 95% of respondents identified as HH library users.
 - The majority lived in households with children.



Program Summary

Program goals:

- Streamline adult spaces: meeting rooms, reading spaces, etc.
- Grow Youth Services to meet needs of service population.
- Create defined space for teens that feels welcoming.
- Additional space for events and special programs.

Building Program Summary				Square	Total		Volumes per	Total		Collection
HELEN HALL - PUBLIC LIBRARY				Feet	Square	Sub	Single Face	Volumes	% in	Total
				Quantity	Feet	Total	Sections	Housed	Circulation	Capacity
					Feet	Foot				
A. Browsing						SF				109
1. Collections										
	21	Hot off the press	0.219	20	4		96	21	51%	32
		New Books-Adult Non Fiction	0	20	0		96	0	40%	0
	64	Adult Local Authors - 5 shelves 66" high	0.667	12.5	8		96	64	20%	77
		New Books-Junior's/Children's	0	20	0		108	0	40%	0
		Youth Services Local Authors - 5 shelves 66" h	0	17	0		210	0	10%	0
		New Books-YA	0	20	0		108	0	60%	0
B. Adult Services/Reference						SF		adult collection		45,778
1. Collections										
	141	Reference - 3 shelves high 48"	1.741	12.5	22		81	141	0%	141
		Non Fiction				93.39516				
	10206	Non-fiction 5 shelves high - 66"	82.31	12	988		124	10,206	12%	11,431
	1273	Bio 5 shelves high - 66"	10.27	12	123		124	1,273	12%	1,426
	102	Adult Literacy 5 shelves high - 66"	0.823	12	10		124	102	12%	114
		Fiction				159.3656				
		Large Print - 5 shelves high	0	12.5	0		124	0	10%	0
	9987	Fiction 5 shelves high - 66"	80.54	12	966		124	9,987	6%	10,586
	4618	Mystery - 5 shelves high - 66"	37.24	12	447		124	4,618	1%	4,664
	31	Book Club Kits - 5 shelves 66" high	2.583	13	34		12	31	4%	32
	1958	Science Fiction/Fantasy - 5 shelves 66" high	15.79	12.5	197		124	1,958	9%	2,134
	1671	Inspriational - 5 shelves 66" high	13.48	12.5	168		124	1,671	4%	1,738
	1207	Graphic Novels - 5 shelves 66" high	9.734	12.5	122		124	1,207	19%	1,436
		Mixed Media				21.13111				
	4137	DVD/Media 10 shelves - 66" high	9.193	15	138		450	4,137	34%	5,544
	2267	DVD Non Fiction 10 shelves - 66" high	5.038	15	76		450	2,267	34%	3,038
	1549	DVD Blu Ray 10 shelves - 66" high	3.442	15	52		450	1,549	34%	2,076
	623	DVD Span 10 shelves - 66" high	1.384	15	21		450	623	34%	835
	423	DVD Span F 10 shelves - 66" high	0.94	15	14		450	423	34%	567
	17	Magazines	1.133	13	14		15	17	0%	17
		Genealogy				102.6424				
	10348	Genealogy Books - 66" h	94.07	12.5	1,176		110	10,348	0%	10,348
	287	Genealogy Colin Co - 66" h	2.609	12.5	33		110	287	0%	287
	423	Genealogy Circ - 66" h	3.845	12.5	48		110	423	0%	423
	218	Genealogy Fam His - 66" h	1.982	12.5	25		110	218	0%	218
	2	Geneaolgy Magazines -66"h	0.133	12.5	2		15	2	0%	2
		Geneaolgy Microform/film	0	25	0		7,140	0	0%	0
		Genealogy CD's								
		World Language				9.233871				
	944	Adult Spanish NF - 5 shelves high 66"	7.613	12	91		124	944	3%	972
	127	Adult Spanish Bio - 5 shelves high 66"	1.024	12	12		124	127	3%	131
	74	Adult Spanish Mys - 5 shelves high 66"	0.597	12	7		124	74	3%	76

Program Summary

Program goals:

- Streamline adult spaces: meeting rooms, reading spaces, etc.
- Grow Youth Services to meet needs of service population.
- Create defined space for teens that feels welcoming.
- Additional space for events and special programs.

C. Youth Services					SF	3,554 SF	children's collection			63,848
1.	Tots Area (Pre-school) Collection				129					0
	63	Blue Bonnet Books	0.3	17	5		210	63	77%	112
	208	Newberry Books	0.99	17	17		210	208	77%	368
	188	Caldecott Books	0.895	17	15		210	188	77%	333
	8822	Picture Books - 3 shelves high - 48"	49.01	12.5	613		180	8,822	56%	13,762
	1576	Picture Books Fav Char - 3 shelves high - 48"	8.756	12.5	109		180	1,576	56%	2,459
	1144	Picture Books Holiiday - 3 shelves high - 48"	6.356	12.5	79		180	1,144	56%	1,785
	171	Picture Books Numbers - 3 shelves high - 48"	0.95	12.5	12		180	171	56%	267
	152	Picture Books Alpha - 3 shelves high - 48"	0.844	12.5	11		180	152	56%	237
	6010	Easy Reader - 3 shelves high - 48"	33.39	17	568		180	6,010	25%	7,513
	2425	Non Fiction - 5 shelves high - 66"	9.51	12	114		255	2,425	22%	2,959
	1695	Board Book bins	7.063	17	120		240	1,695	68%	2,848
	268	Spanish Board Book bins	1.117	17	19		240	268	68%	450
	59	Steam Kits	4.917	15	74		12	59	28%	76
	56	Story Time Kits	4.667	15	70		12	56	28%	72
3.	Middle Grade Collection				15					0
	2463	Fiction - 5 shelves high - 66"	15.39	12	185		160	2,463	25%	3,079
		Non Fiction - 5 shelves high - 66"	0	12	0		255	0	15%	0
2.	Junior Area (elementary School) Collection				104					0
	8364	Fiction - 5 shelves high - 66"	46.47	12	558		180	8,364	25%	10,455
	101	2x2 - 5 shelves high - 66"	0.561	12	7		180	101	25%	126
	6532	Non Fiction - 5 shelves high - 66"	25.62	12	307		255	6,532	15%	7,512
	1328	Bio - 5 shelves high - 66"	5.208	12	62		255	1,328	15%	1,527
	2628	Graphic Novels - 5 shelves high - 66"	18.12	12.5	227		145	2,628	42%	3,732
	281	DVD J/NF 10 shelves - 66" high	0.624	15	9		450	281	26%	354
	2731	DVD Family 10 shelves - 66" high	6.069	15	91		450	2,731	26%	3,441
	686	Blu Ray Family 10 shelves - 66" high	1.524	15	23		450	686	26%	864
	World Language				17.69111					
	719	Easy Spanish - 3 shelves high - 48"	3.994	17	68		180	719	25%	899
	668	PB Spanish - 3 shelves high - 48"	3.711	17	63		180	668	25%	835
	82	PB Spanish Fav Char- 3 shelves high - 48"	0.456	17	8		180	82	25%	103
	142	Easy Reader - Spanish	0.789	12.5	10		180	142	38%	196
	666	Junior Spanish NF	3.7	12.5	46		180	666	12%	746
	666	Junior Spanish NF	3.7	12.5	46		180	666	12%	746
	119	Junior Spanish Bio	0.661	12.5	8		180	119	12%	133
	294	Youth DVD Family Spanish 10 shelves - 66" high	0.653	15	10		450	294	11%	326
	12	Family DVD Spanish 10 shelves - 66" high	0.027	15	0		450	12	11%	13
D. Teen Services					SF	659 SF	teen collection			6,225
1.	Collections				53.94792					
	2866	Fiction - 5 shelves high - 66"	29.85	12	358		96	2,866	18%	3,382
	45	Spanish - 5 shelves high - 66"	0.469	12	6		96	45	18%	53
	2268	Graphic Novels - 5 shelves high - 66"	23.63	12.5	295		96	2,268	23%	2,790
						9,011				

115,960

Existing Conditions



Entry Lobby



Adult Stacks



Meeting Room



Views to Surrounding Tree Canopy



Teen Area



Youth Activity Space

Look and Feel



Biophilic accents



Wood ceiling accents



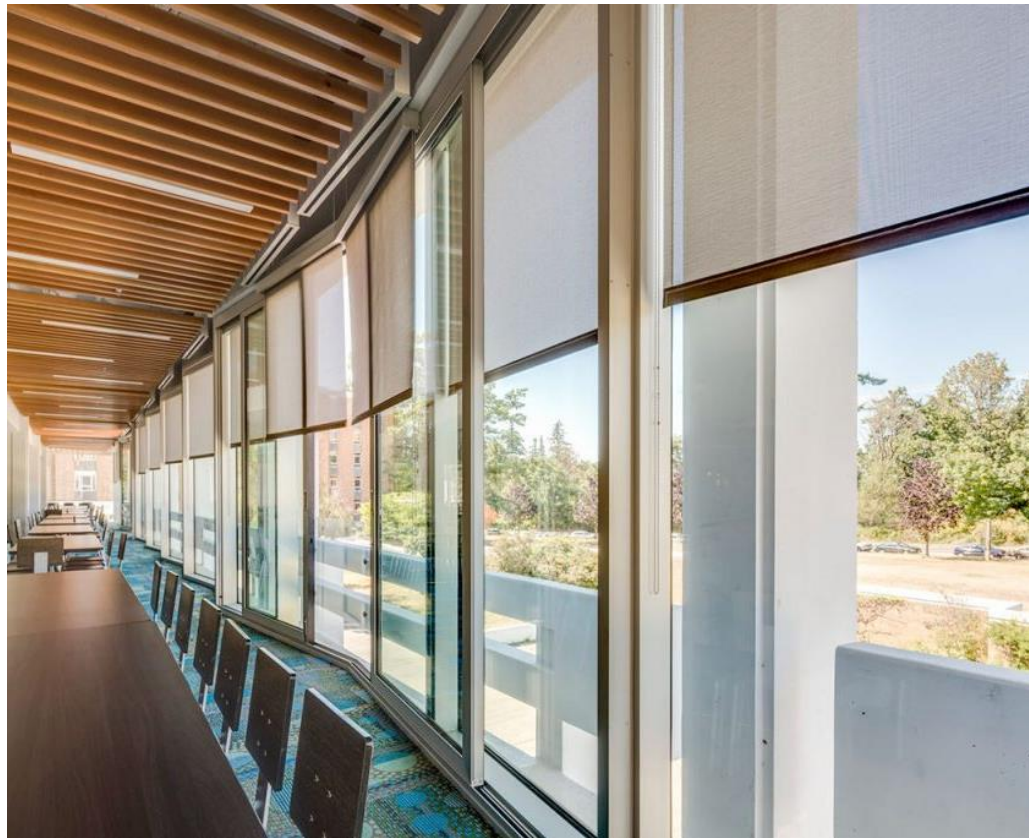
Light diffusing materials



Filtered daylight



Pops of color



Wood acoustical baffling

Program Spaces



Quiet reading



Meeting room



Conference room



Variety of Seating



Study rooms



Seating under stairs

Program Spaces



Movable Gallery Walls



Multipurpose Cultural Activity Space



Gaming



Bright and Inviting Interactives



Custom Shelving and pops of color



Seating Niches built into Youth Walls



Variety of Outdoor Seating

Outdoor Spaces

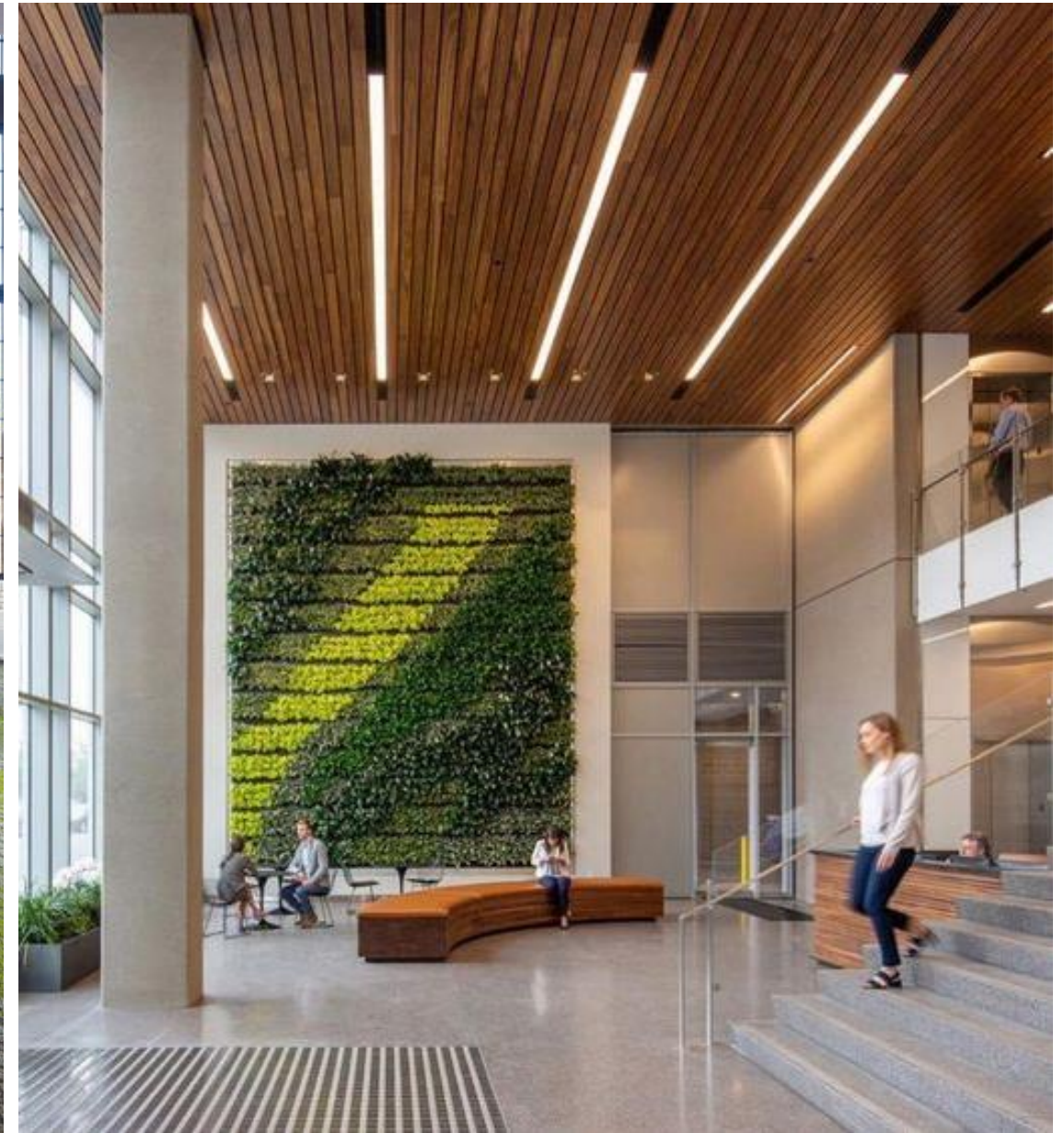


Outdoor Interactives for Children



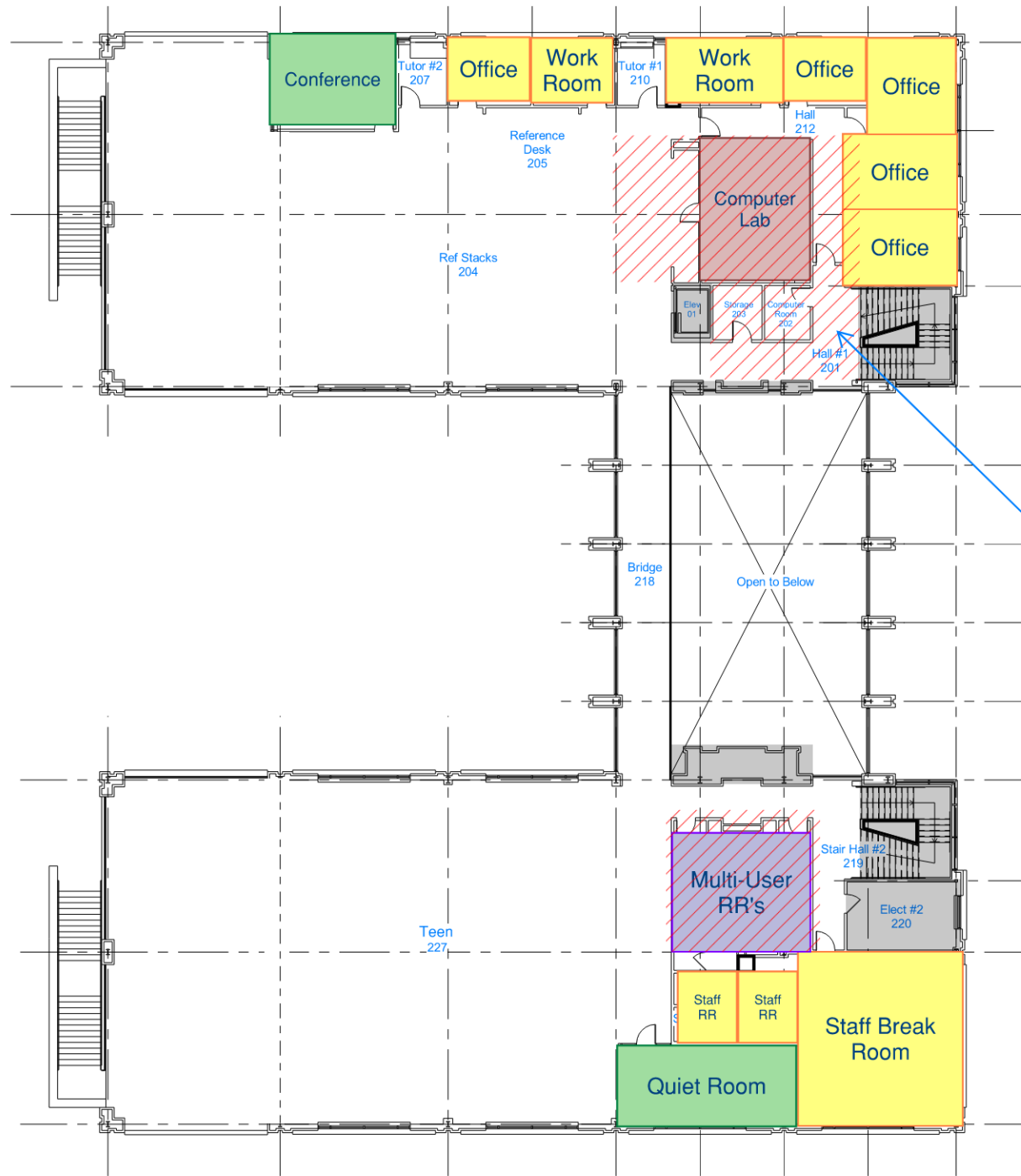
Artificial turf to provide a welcoming, low maintenance play surface in lieu of DG

02 Plan Development

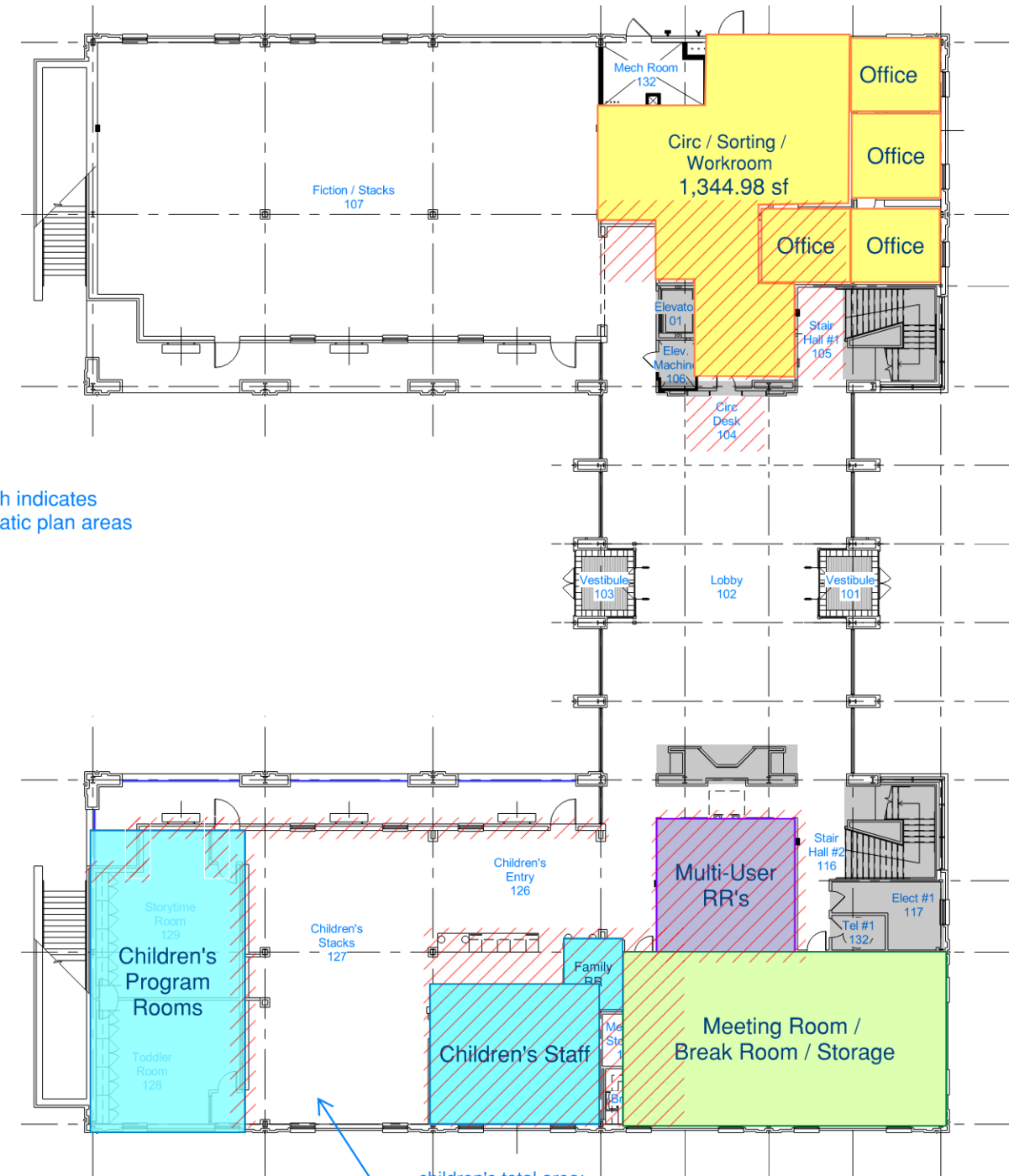


Existing Plan Concerns

- Restrooms and multipurpose room block access to south wing.
- Elevator core also blocks access to north wing.
- Staff space is disjointed and inefficient.
- Youth areas are significantly undersized.
- Teen area is much larger than needed – inefficient use of space.



02 Level 2 Presentation
3/64" = 1'-0"



01 Level 1 Presentation
3/64" = 1'-0"

red hatch indicates problematic plan areas

children's total area: 3750 sf

First Floor

Primary Spaces:

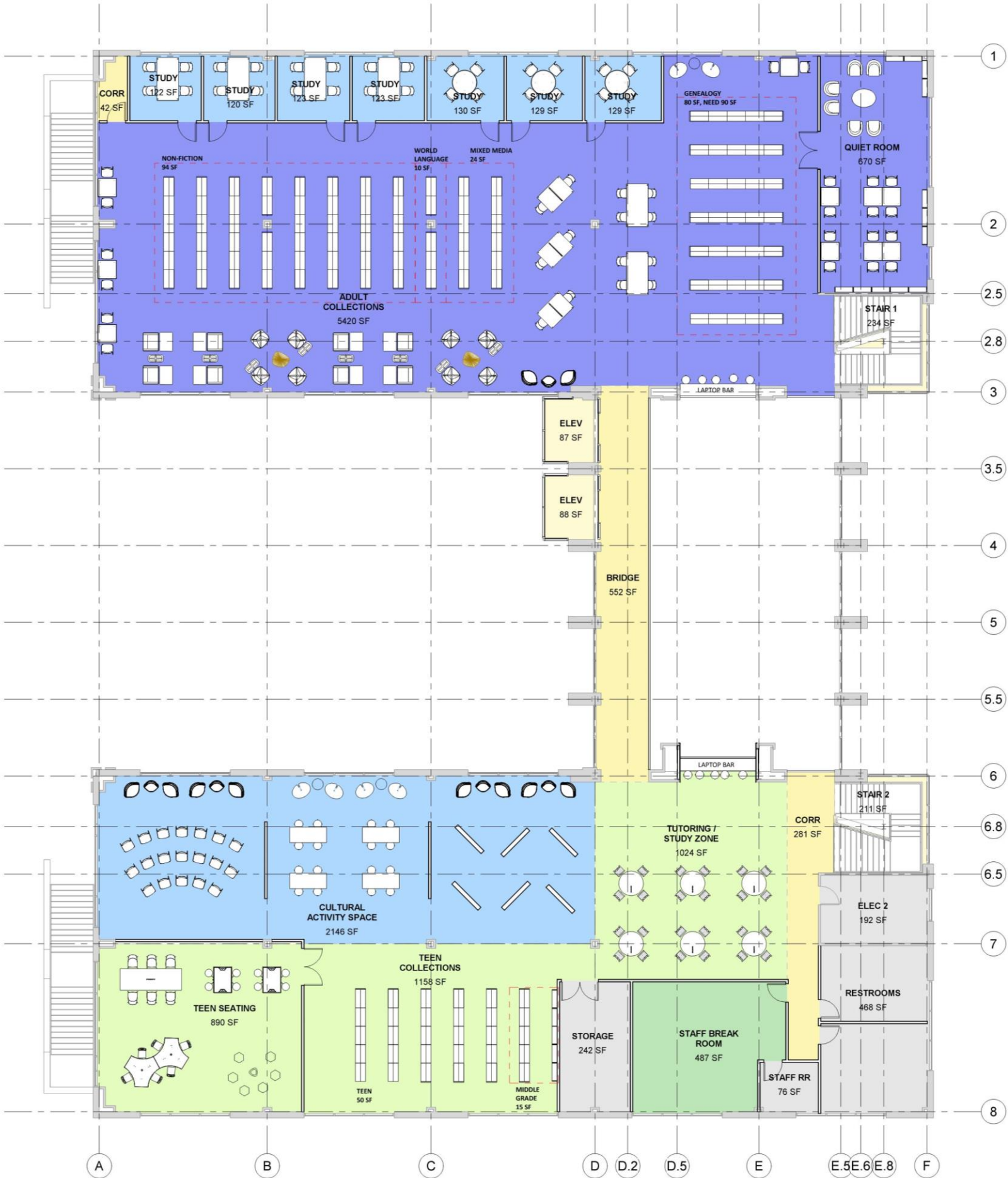
- Updated Lobby
- Adult Collection
- Consolidated Staff Areas
- Relocated Meeting Rooms
- Expanded Youth Wing
- Visible stairs and sight lines



Second Floor

Primary Spaces:

- Enhanced Teen Space
- Cultural Activity Space
- Adult Collections & Meeting Wing
- Visible stairs and sight lines



03 Lobby Perspectives

Views of the Existing Space



New View towards Youth

Children's Entry Feature

Feature Ceiling with Enhanced Acoustics/ Lighting

Enhanced Finishes



New View towards Adult

Feature Ceiling with Enhanced Acoustics/ Lighting

Enhanced Finishes



04 Cost Estimate

Summary of Costs for 2023

Construction Costs:	\$7,681,945
New Furniture:	\$1,155,000
Summary of A/E Fees:	\$1,002,528
Owner Direct Expenses:	\$934,000
TOTAL:	\$10,773,473

Escalation at 6% per year

2024:	\$11.42 m
2025:	\$12.11 m
2026:	\$12.84 m
2027:	\$13.61 m
2028:	\$14.42 m

*Based on current construction costs – assume 6% increase per year for escalation

Thank you!
Questions?