

Eastside Airport Development Update – McKinney Economic Development Corporation



January 21, 2025

Airport Eastside Development Update

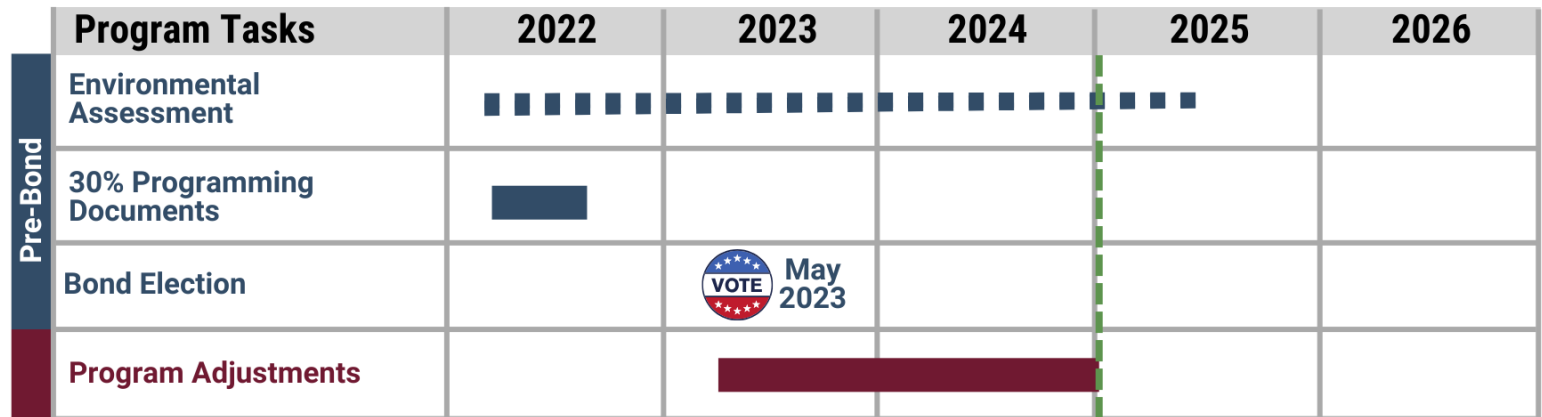
Terminal GO Bond Election failed

Program was reevaluated with a continued interest by the airlines

Concurrently, General Aviation development on the west side of the airport is approaching build out

Eastside development focused on providing the backbone infrastructure with a new parallel taxiway and roadway connection

Highest and best use of the property would develop first



Existing Airport Layout

Existing Taxiway Bravo

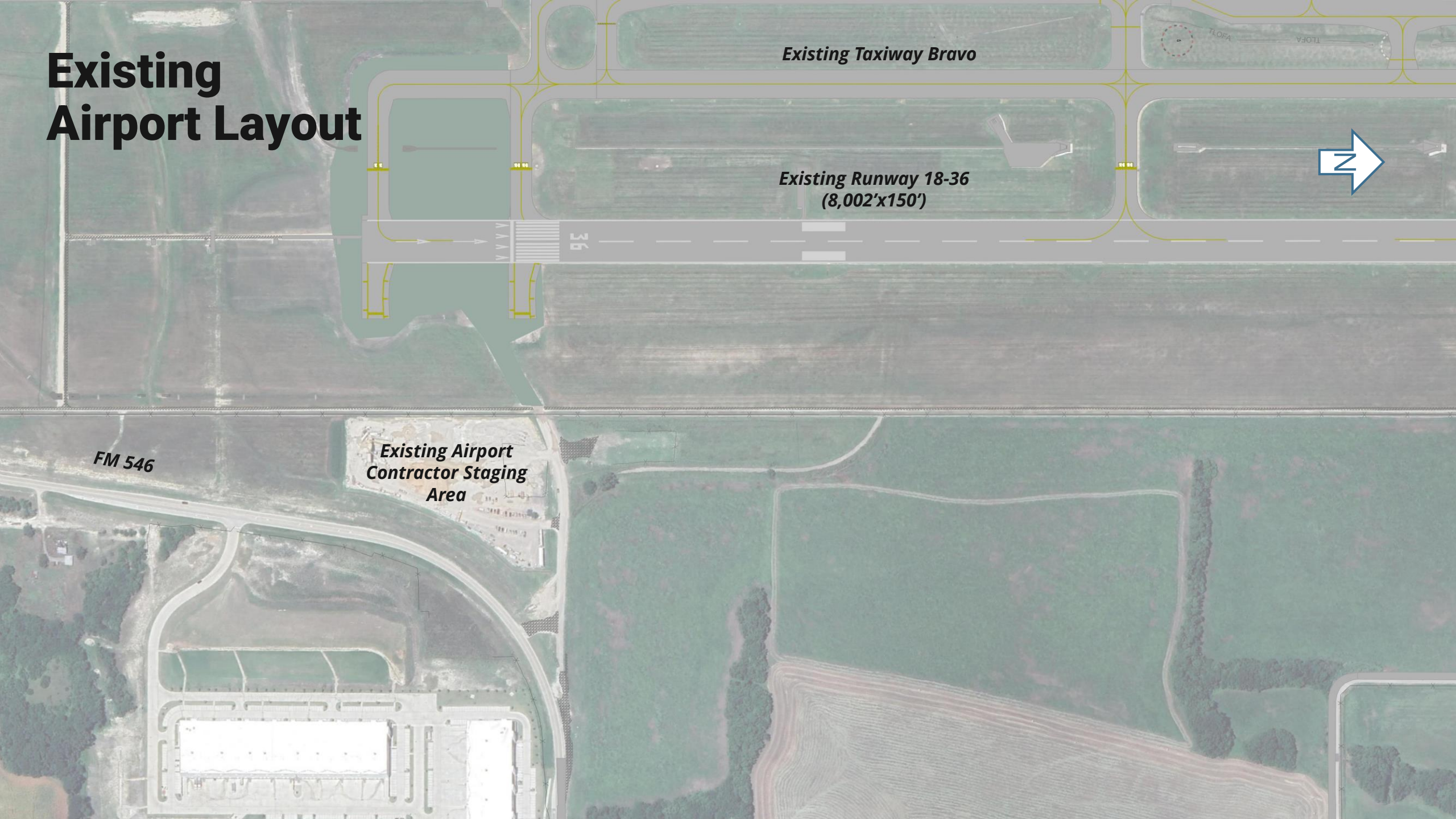
Existing Runway 18-36
(8,002'x150')



36

FM 546

Existing Airport
Contractor Staging
Area



New Taxiway Charlie

Existing Taxiway Bravo

Existing Runway 18-36
(8,002'x150')



Taxiway C7

Taxiway C6

Taxiway C

Taxiway C5

FM 546

Existing Airport
Contractor Staging
Area



FM 546 Connection

Existing Taxiway Bravo

Existing Runway 18-36
(8,002'x150')



Taxiway C7

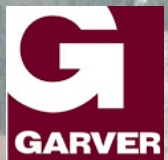
Taxiway C6

Taxiway C

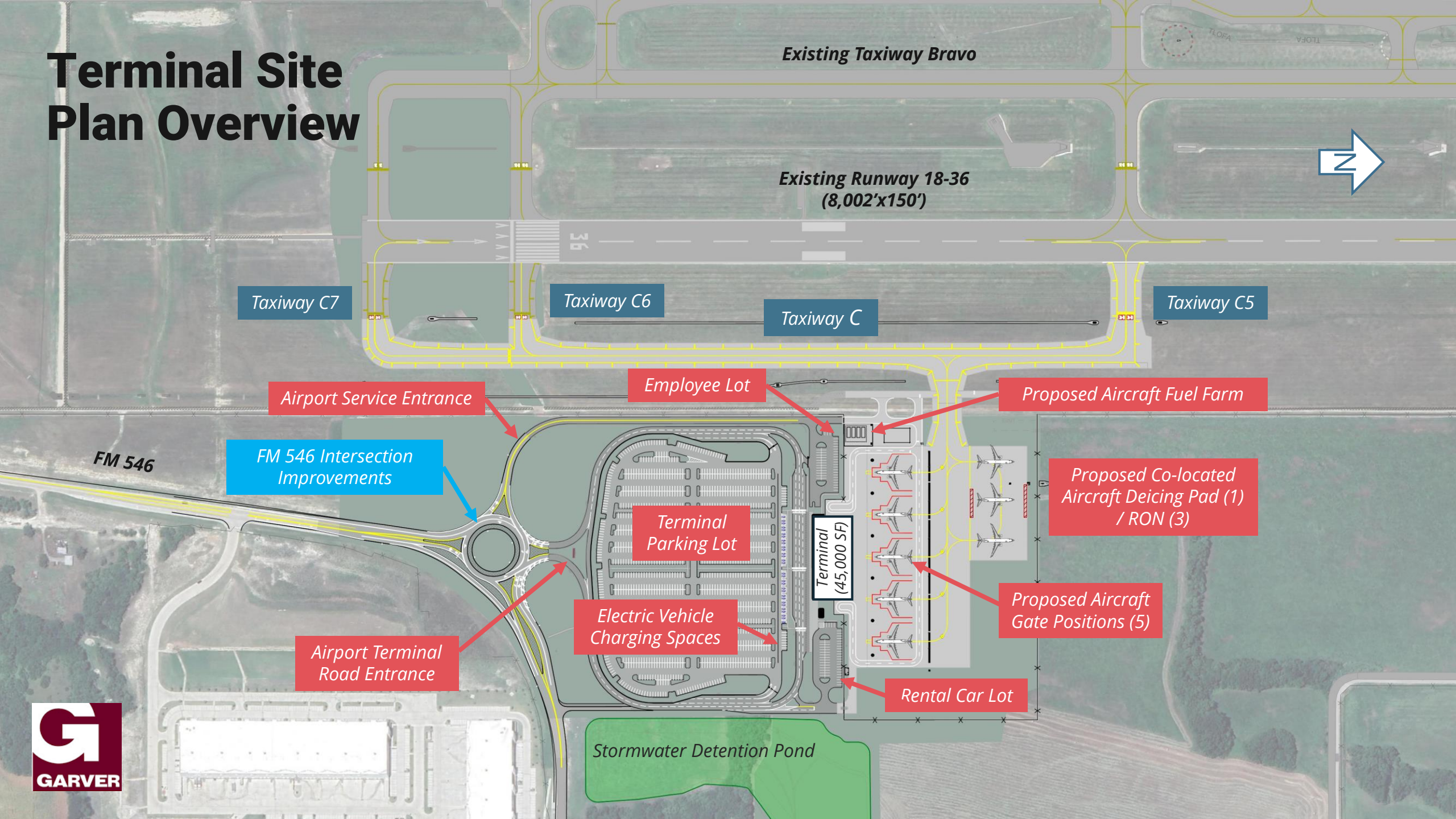
Taxiway C5

FM 546 Intersection Improvements

FM 546



Terminal Site Plan Overview



Existing Taxiway Bravo

Existing Runway 18-36
(8,002'x150')

Taxiway C7

Taxiway C6

Taxiway C

Taxiway C5

Airport Service Entrance

Employee Lot

Proposed Aircraft Fuel Farm

FM 546

FM 546 Intersection Improvements

Proposed Co-located Aircraft Deicing Pad (1) / RON (3)

Terminal Parking Lot

Terminal
(45,000 SF)

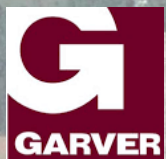
Proposed Aircraft Gate Positions (5)

Airport Terminal Road Entrance

Electric Vehicle Charging Spaces

Rental Car Lot

Stormwater Detention Pond









↑ To Baggage Claim To All Gates Security Checkpoint →

TICKETING

EST. 18





Project Cost

Preliminary estimates for initial airport terminal operation

CMAR will provide refined construction estimates this Spring

Project Elements	Cost Estimate
Terminal Apron Pavement	\$14.0M
Parallel Taxiway C (Phase 1) – Partial Parallel Taxiway to Runway 36 End	\$15.9M
FM 546 Roadway Connection & Loop Roadway	\$10.5M
Parking Lots	\$12.5M
New ARFF Equipment	\$1.6M
New East Side Fuel Farm	\$2.5M
Terminal Building	\$15.0M
Project Total	\$72.0M

Proposed Funding Sources

\$5.3M awarded to date from MEDC and MCDC grants

Funding Sources	Cost Estimate
Estimated Total Cost	\$72.0M
MEDC Grant (awarded)	\$1.7M
MCDC Grant (awarded)	\$3.6M
TIFIA Loan (MCDC) w/ interim financing	\$30.0M
MEDC Grant	\$22.4M
Funding Gap (FAA,TxDOT,TIRZ)	\$14.3M
Project Total	\$72.0M

MEDC Funding Timeline

- January 21st
 - March 18th – Joint Mtg
 - April 9th
 - April 23rd
 - April 30th
- Presentation to EDC Board
EDC Board and City Council approve parameters ordinance
Price bonds in negotiated sale
Receive AG approval of bonds
Receive funds

