

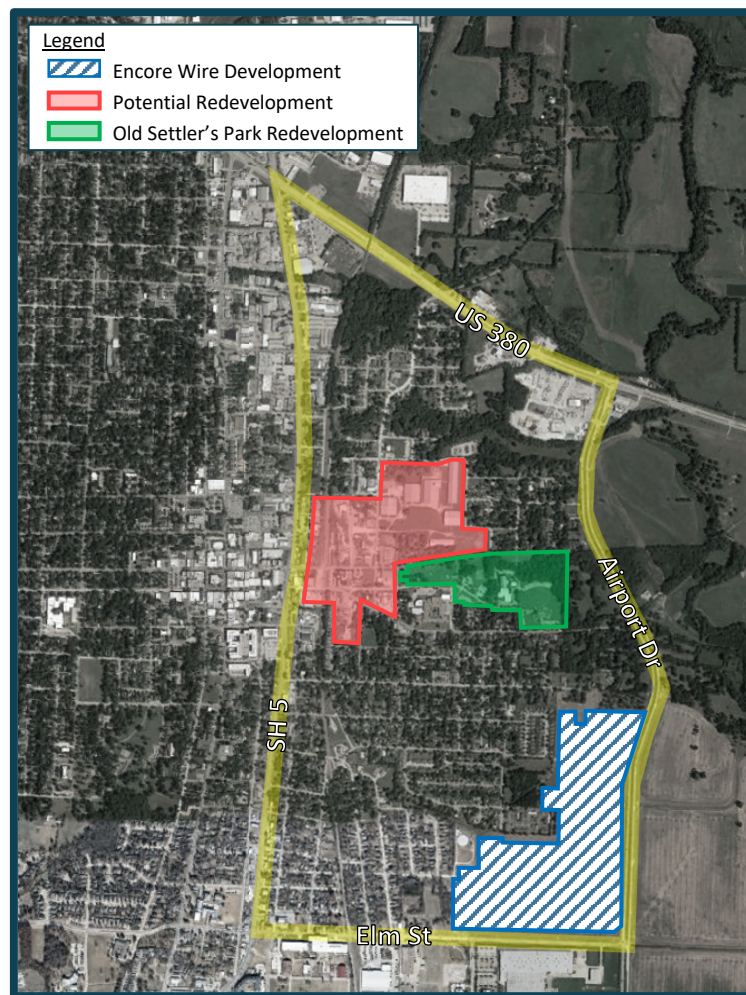
An aerial photograph of a suburban area in McKinney, Texas. A yellow-shaded region highlights a specific neighborhood, likely the Eastside area. The map shows a mix of residential streets, green spaces, and some commercial or industrial areas. A major road, possibly US-75, runs vertically on the left side of the image. The highlighted area is located in the center-left, bounded by a yellow line that follows a road network and a natural boundary. The text 'McKinney Eastside Roadway Connectivity' is overlaid on a dark blue rectangular background in the upper right portion of the map.

McKinney Eastside Roadway Connectivity

June 2, 2020

Agenda

- Elm Street Realignment
- Eastside Redevelopment



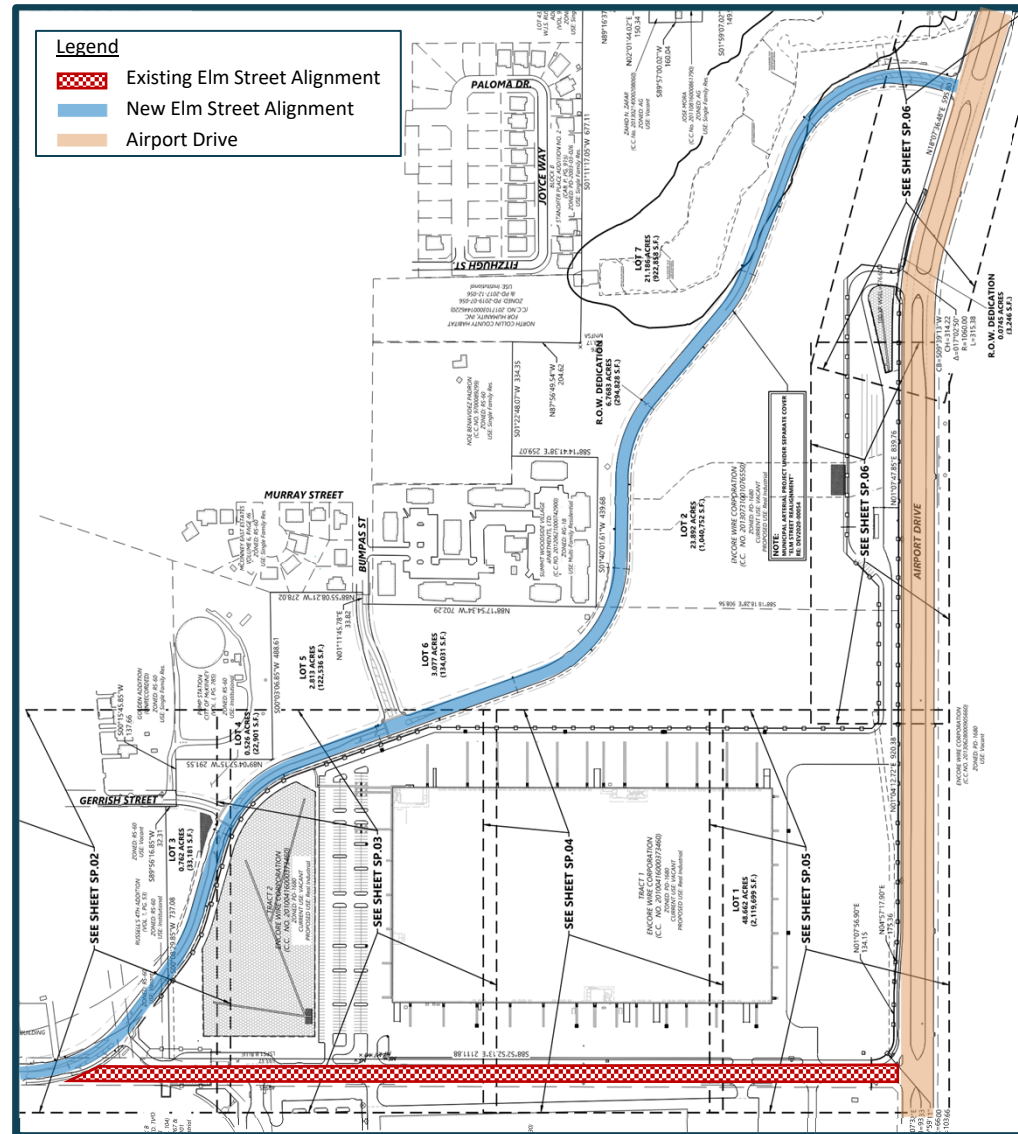
Vicinity Map

ELM STREET REALIGNMENT

GERRISH STREET & BUMPAS STREET CONNECTIONS



Elm Street Realignment



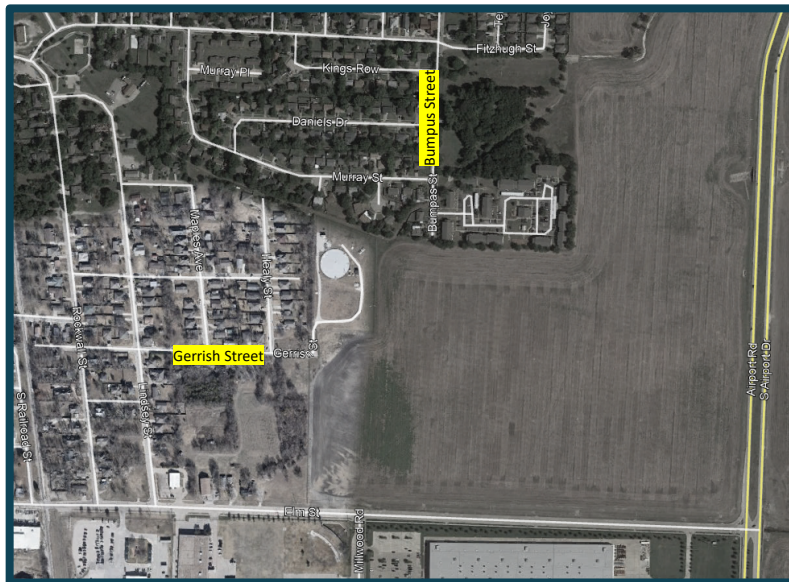
Encore Wire Development Plan

Observed Existing Traffic Patterns

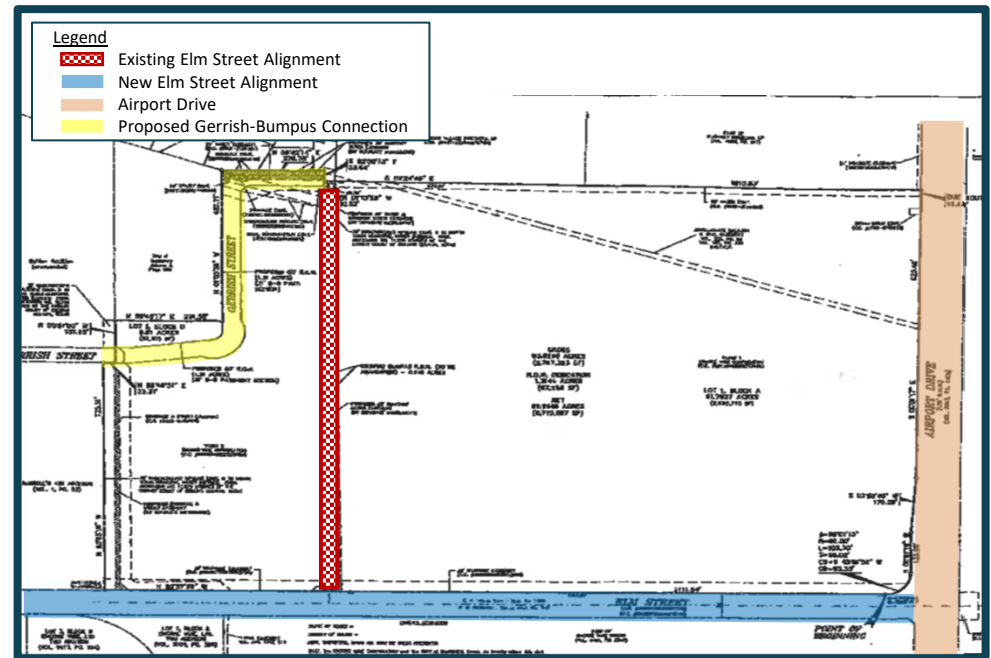


Connection to Gerrish Street & Bumpas Street

- City abandoned Bumpas Street right-of-way & retained easements
- Encore Wire agreed to provide a connect to Gerrish Street and Bumpas Street at the time of development

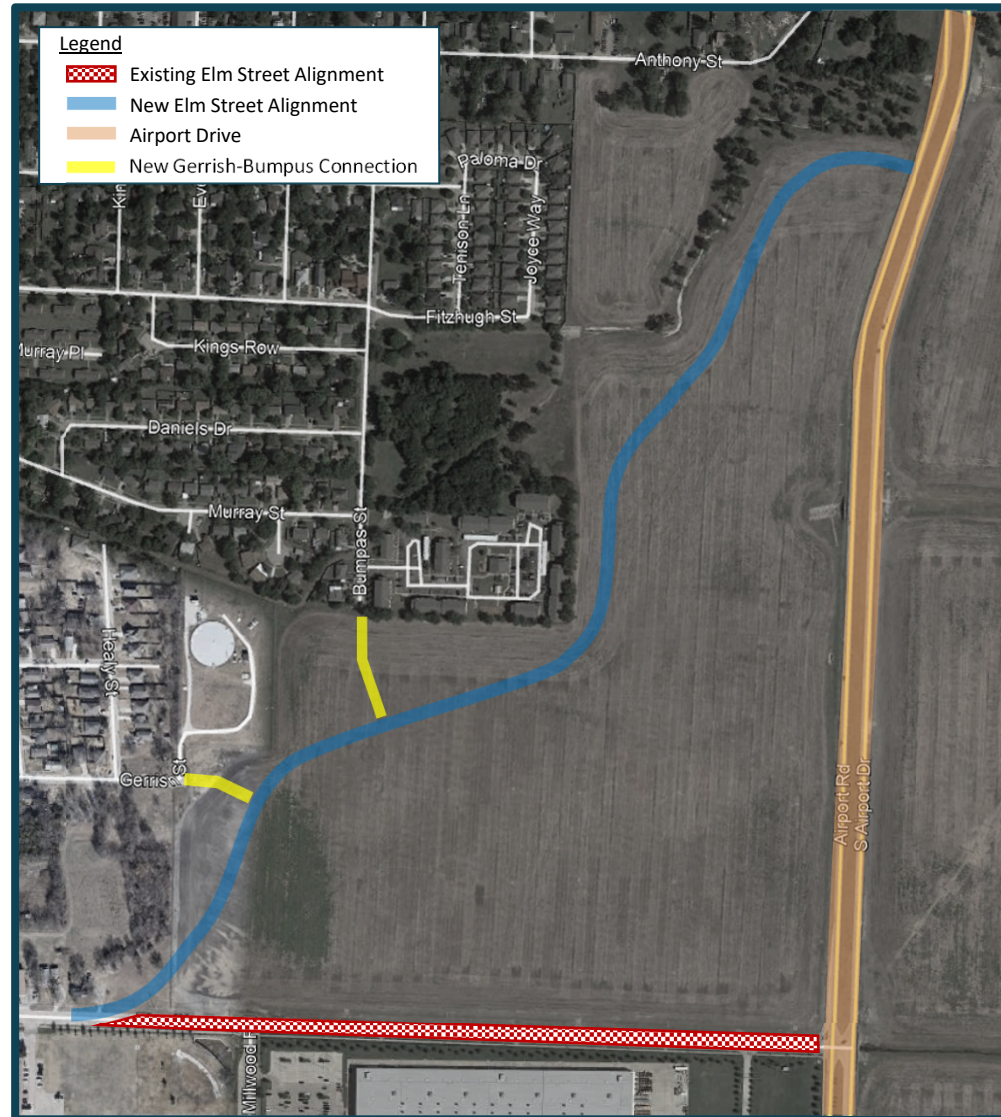


Existing Conditions



Preliminary-Final Plat for the Airport-Elm Addition

Elm Street Realignment



*Alignments Not To Scale

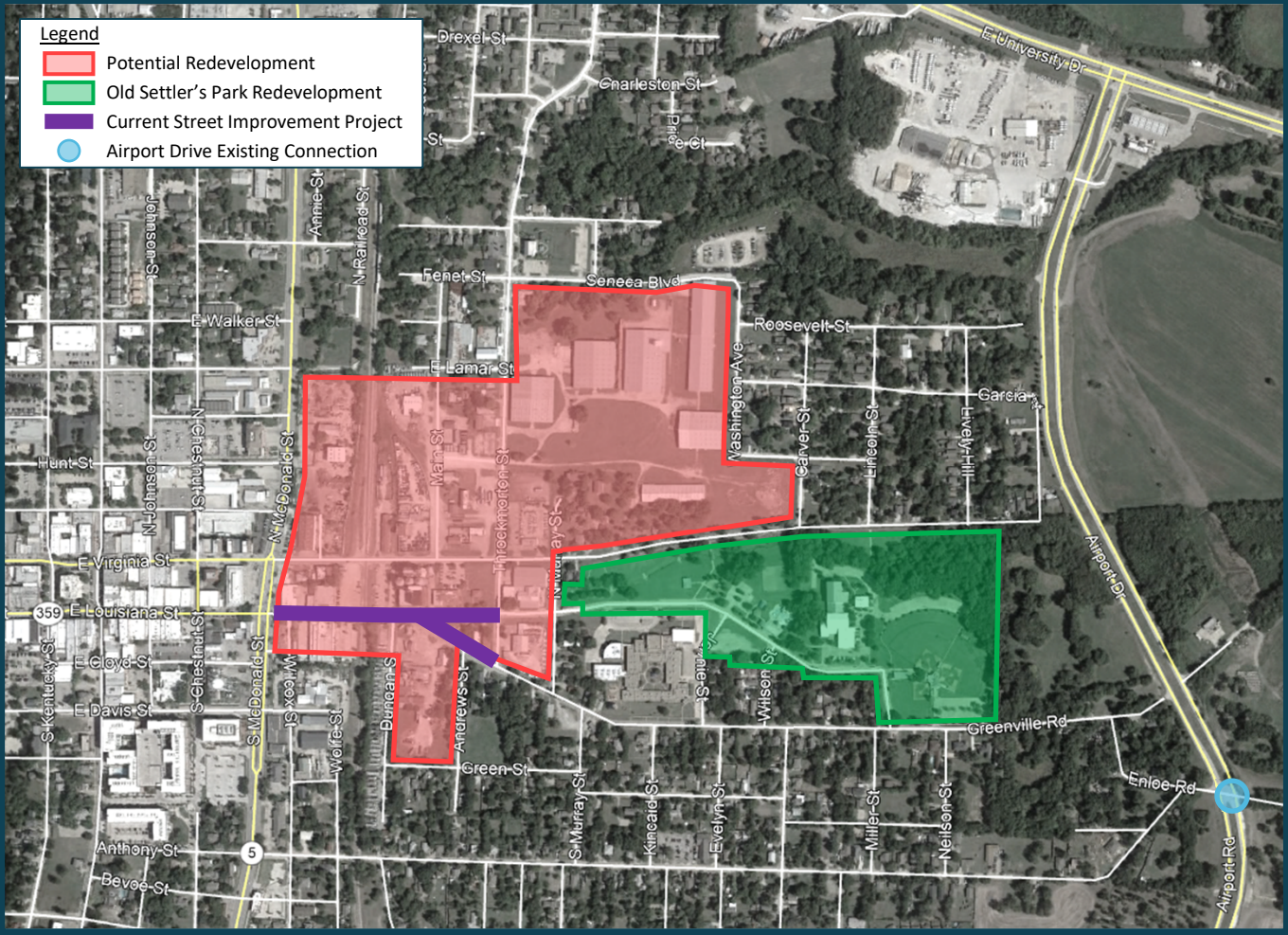


Next Steps

- Conditional Elm Street right-of-way abandonment agreement for Council's consideration
- Notify impacted residents of Elm Street realignment and connections to Gerrish Street and Bumpas Street

EASTSIDE REDEVELOPMENT

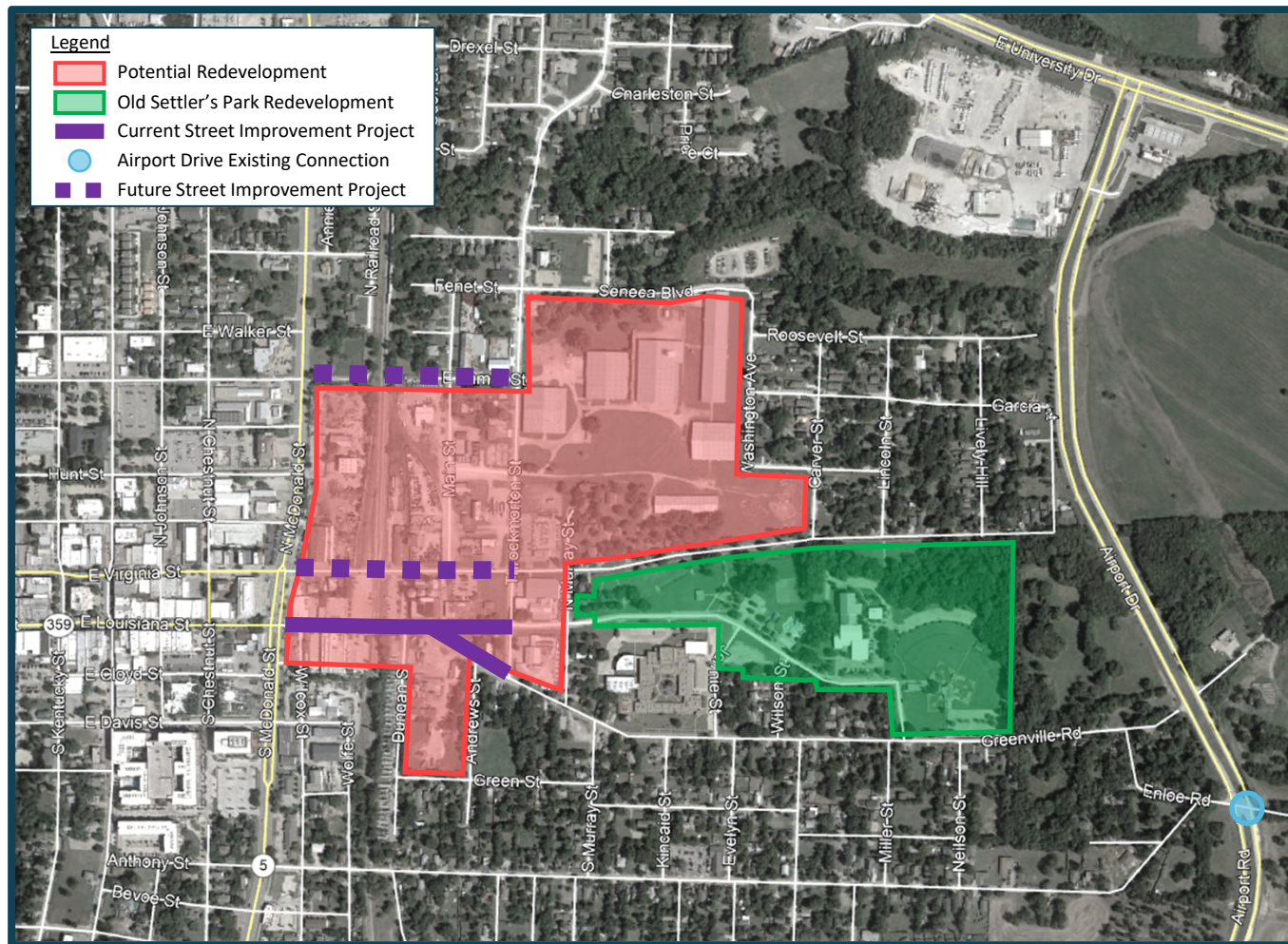




Eastside Redevelopment Plans

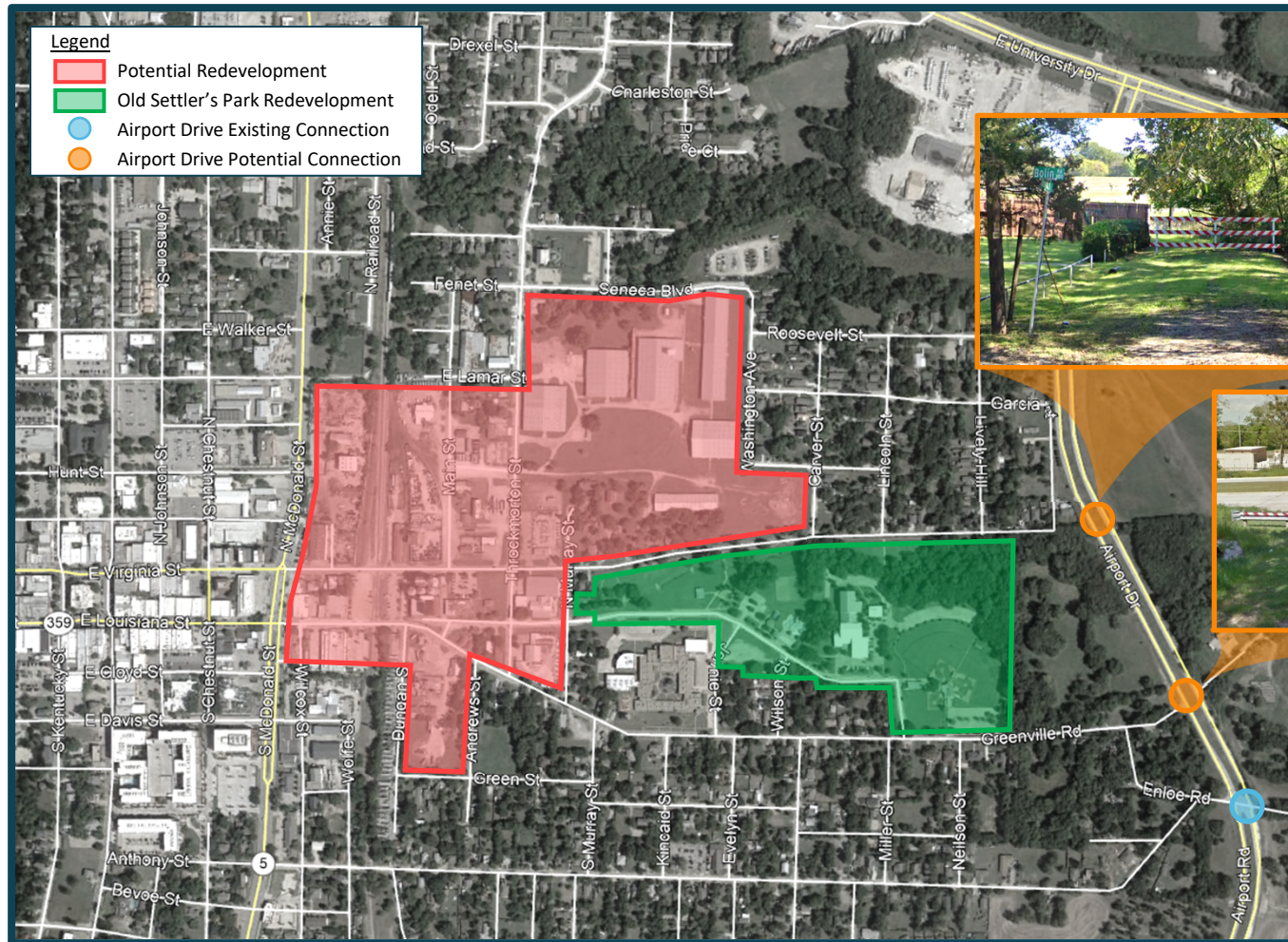


Connections to SH 5



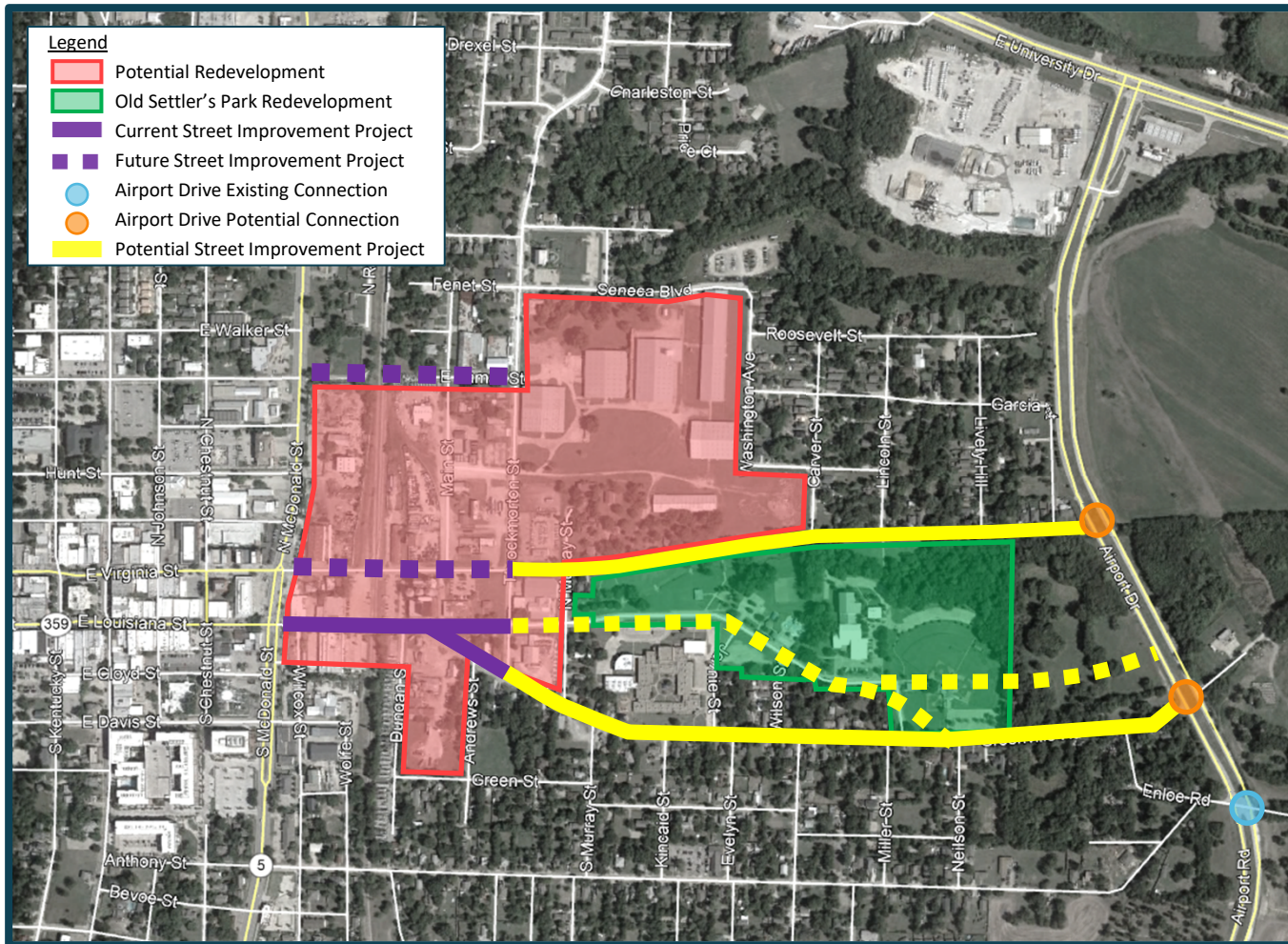
Eastside Redevelopment Plans

Connections to Airport Drive



Eastside Redevelopment Plans

Potential Roadway Connections



Eastside Potential Airport Drive Roadway Connections

*Alignments shown on exhibit are for discussion purposes only

Next Steps with Council Concurrence

- Continue to develop potential alignments while coordinating with the appropriate stakeholders
- Include necessary roadway improvements on the 5-year Capital Improvements Plan



Questions?

